

PARCC & NJASK RESULTS: SPRING 2015

FLEMINGTON-RARITAN REGIONAL
BOARD OF EDUCATION

DECEMBER 14, 2015

REVISED DECEMBER 22, 2015



Measuring
College and
Career
Readiness

VISION FOR PUBLIC EDUCATION IN NEW JERSEY

“New Jersey will educate all students to prepare them to lead productive, fulfilling lives. Through a public education system that is seamlessly aligned from pre-school to college, students will gain the requisite academic knowledge and technical and critical thinking skills for life and work in the 21st century.”



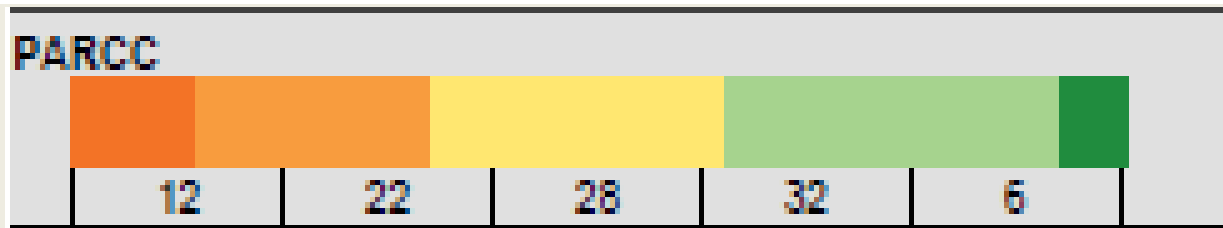
NEW JERSEY'S STATEWIDE ASSESSMENT PROGRAM

- In 2015, New Jersey adopted the Partnership for Assessment of Readiness for College and Careers (PARCC) to replace HSPA and previous assessments in the elementary and middle school in language arts and mathematics.
- Students took PARCC English Language Arts and Literacy Assessments (ELA/L) in grades 3 – 11.
- Students took PARCC Mathematics Assessments in grades 3 – 8 and End of Course Assessments in Algebra I, Geometry, and Algebra II.

PARCC PERFORMANCE LEVELS

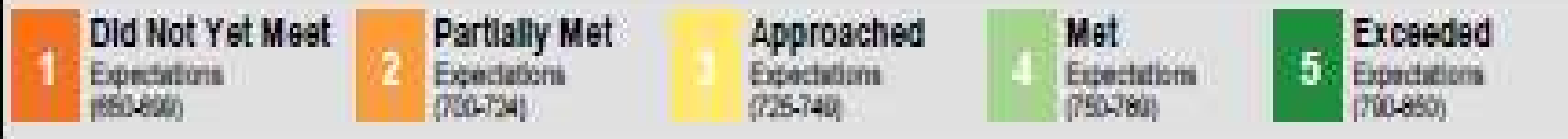
- Level 1: Not yet meeting grade-level expectations
- Level 2: Partially meeting grade-level expectations
- Level 3: Approaching grade-level expectations
- Level 4: Meeting grade-level expectations
- Level 5: Exceeding grade-level expectations

HOW TO READ THE BAR GRAPHS



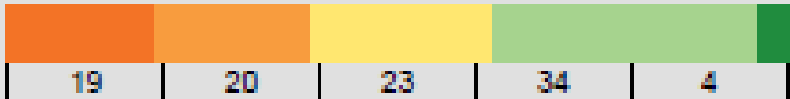
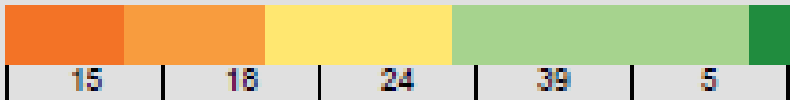
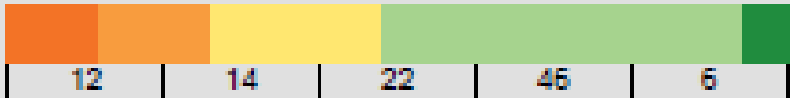




Each of the colored bands above represents the percentage of students scoring within the corresponding performance level s described below. For example, of all students who took this particular test....

- 6% (dark green) “Exceeded Expectations (5)”
- 32% (light green “Met Expectations (4)”
- 28% (yellow) “Approached Expectations (3)”
- 22% (light orange) “Partially Met “ (2)
- 12 (dark orange) “ Did Not Yet Meet (1)”



ENGLISH LANGUAGE ARTS / LITERACY

Grade 3 Assessment, 2014–2015

PERFORMANCE DISTRIBUTION BY %	NUMBER OF STUDENTS	ELA/L AVG OVERALL SCORE
PARCC 	518,291	736
STATE 	95,276	743
DISTRICT 	361	750
BARLEY SHEAF 	76	760
COPPER HILL SCHOOL 	91	762
F A DESMARES ELEM SCHOOL 	110	734
ROBERT HUNTER 	84	747



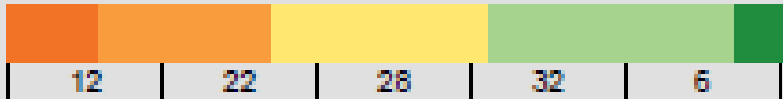
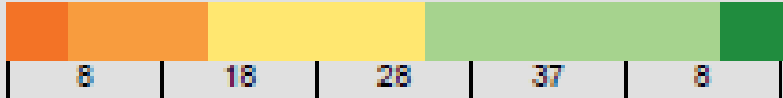





PARCC
Spring 2015

Grade 3

English
Language
Arts/Literacy

MATHEMATICS

Grade 3 Assessment, 2014–2015

PERFORMANCE DISTRIBUTION BY %	NUMBER OF STUDENTS	MATH AVG OVERALL SCORE
PARCC 	649,471	738
STATE 	95,988	745
DISTRICT 	361	759
BARLEY SHEAF 	76	763
COPPER HILL SCHOOL 	91	766
F A DESMARES ELEM SCHOOL 	110	751
ROBERT HUNTER 	84	758



PARCC
Spring 2015

Grade 3

Mathematics

ENGLISH LANGUAGE ARTS / LITERACY

Grade 4 Assessment, 2014–2015



PARCC
Spring 2015

Grade 4

English
Language
Arts/Literacy

PERFORMANCE DISTRIBUTION BY %	NUMBER OF STUDENTS	ELA/L AVG OVERALL SCORE
PARCC 11 19 29 34 8	632,154	742
STATE 8 15 27 39 12	93,852	750
DISTRICT 2 9 19 51 18	362	762
BARLEY SHEAF 4 3 17 59 17	71	763
COPPER HILL SCHOOL 1 7 20 55 17	108	764
F A DESMARES ELEM SCHOOL 4 12 19 48 16	91	759
ROBERT HUNTER 1 13 18 45 23	92	764

MATHEMATICS

Grade 4 Assessment, 2014–2015

PERFORMANCE DISTRIBUTION BY %	NUMBER OF STUDENTS	MATH AVG OVERALL SCORE
PARCC <div> <div></div> <div>12</div> <div>26</div> <div>30</div> <div>29</div> <div>3</div> </div>	634,705	736
STATE <div> <div></div> <div>7</div> <div>22</div> <div>30</div> <div>36</div> <div>4</div> </div>	94,572	743
DISTRICT <div> <div></div> <div>2</div> <div>13</div> <div>23</div> <div>50</div> <div>12</div> </div>	363	758
BARLEY SHEAF <div> <div></div> <div>3</div> <div>10</div> <div>18</div> <div>56</div> <div>13</div> </div>	71	761
COPPER HILL SCHOOL <div> <div></div> <div>2</div> <div>11</div> <div>21</div> <div>50</div> <div>16</div> </div>	109	761
F A DESMARES ELEM SCHOOL <div> <div></div> <div>1</div> <div>21</div> <div>24</div> <div>43</div> <div>11</div> </div>	91	754
ROBERT HUNTER <div> <div></div> <div>2</div> <div>11</div> <div>27</div> <div>52</div> <div>8</div> </div>	92	757

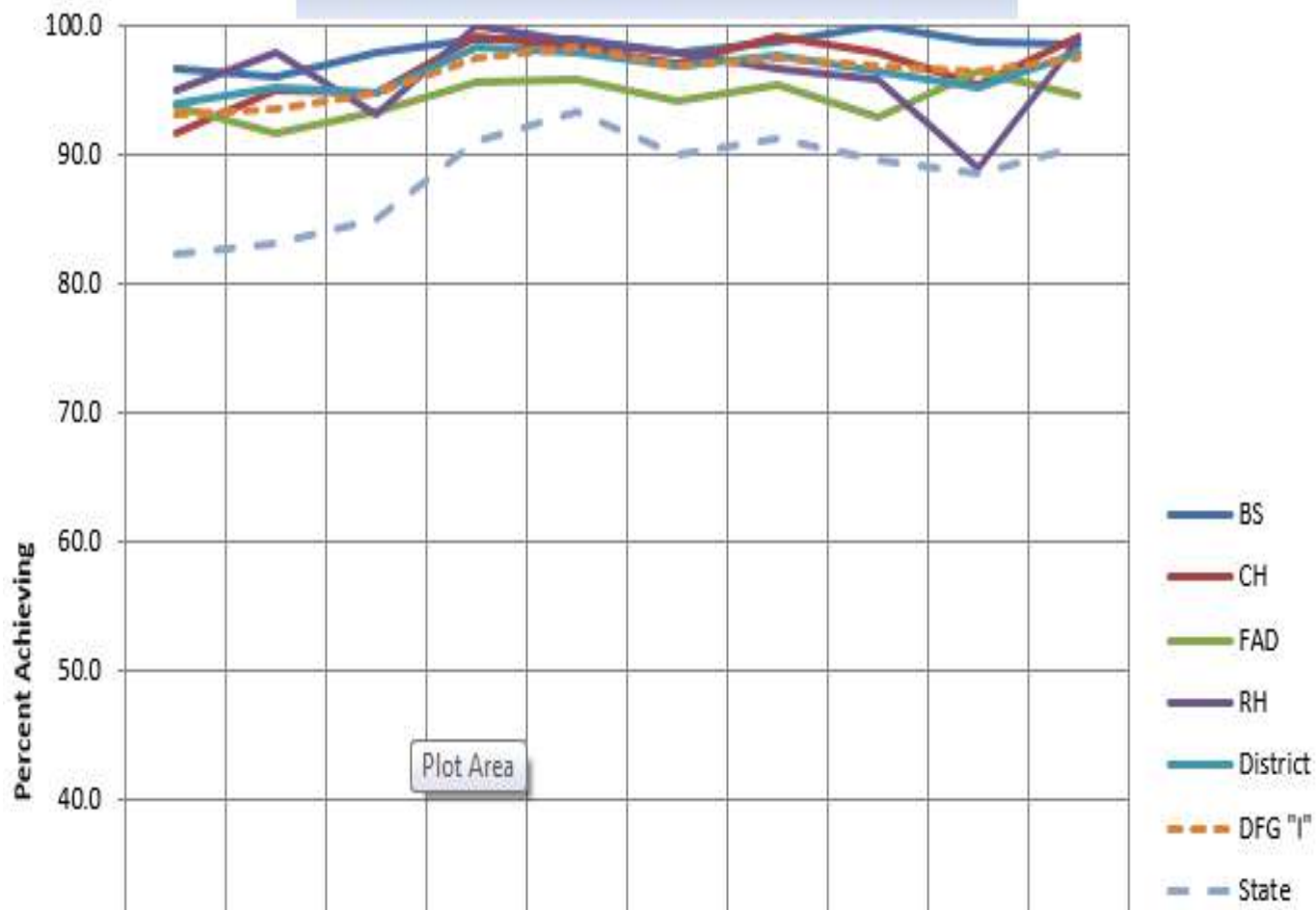


PARCC
Spring 2015

Grade 4

Mathematics

Grade 4 Science: Proficient and Above

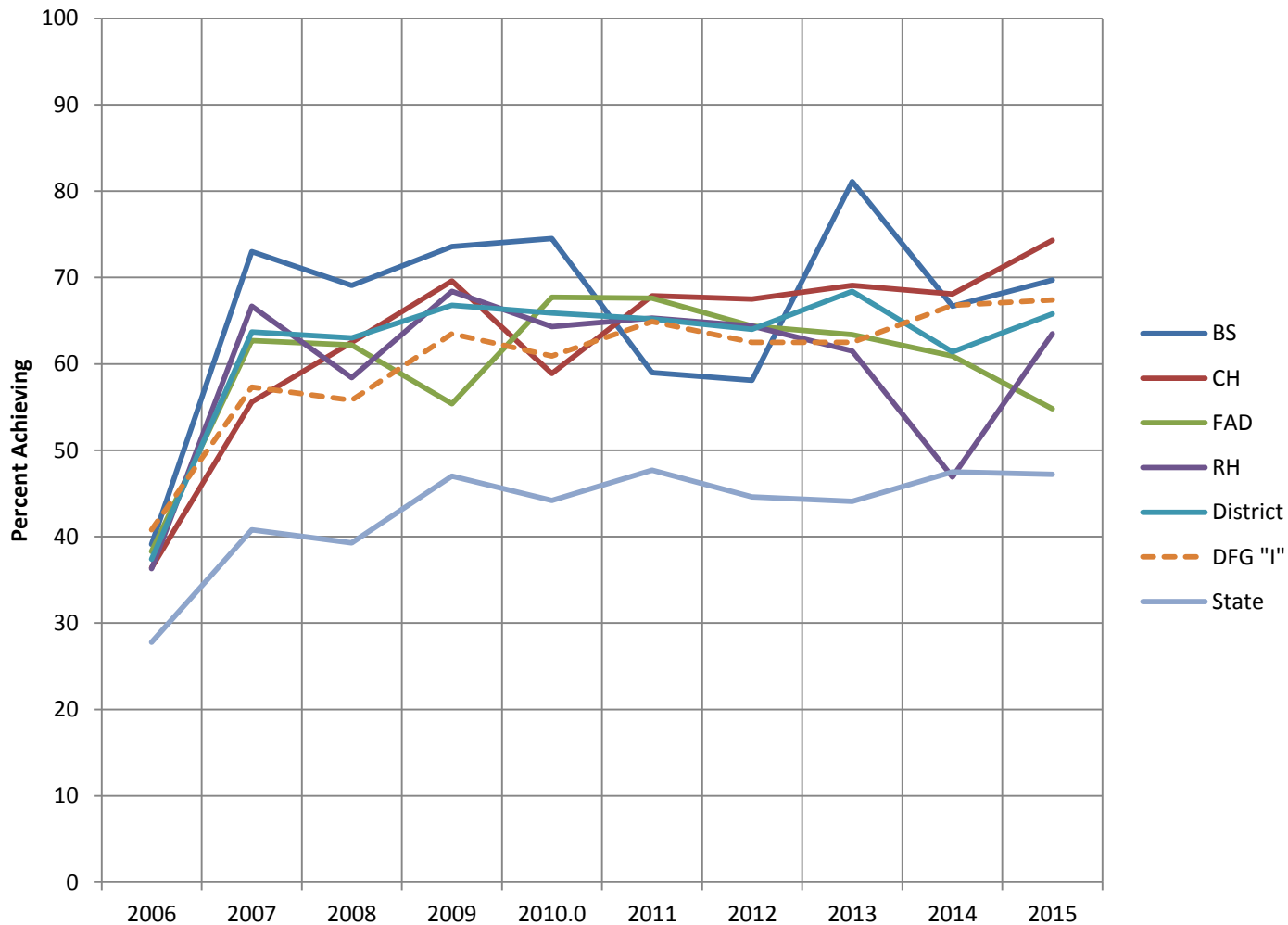


NJASK
Spring 2015

Grade 4

Science
Proficient &
Above

Grade 4 Science: Advanced Proficient



NJASK
Spring 2015

Grade 4

**Advanced
Proficient**

ENGLISH LANGUAGE ARTS / LITERACY

Grade 5 Assessment, 2014–2015



PERFORMANCE DISTRIBUTION BY %	NUMBER OF STUDENTS	ELA/L AVG OVERALL SCORE
PARCC 	637,921	741
STATE 	94,655	750
DISTRICT 	354	757
READING-FLEMING INTERMED 	354	757

PARCC
Spring 2015

Grade 5

English
Language
Arts/Literacy

MATHEMATICS

Grade 5 Assessment, 2014–2015



PERFORMANCE DISTRIBUTION BY %	NUMBER OF STUDENTS	MATH AVG OVERALL SCORE
PARCC <div>112630284</div>	639,592	736
STATE <div>62132356</div>	95,354	743
DISTRICT <div>411234813</div>	353	756
READING-FLEMING INTERMED <div>411234813</div>	353	756

PARCC
Spring 2015

Grade 5

Mathematics

ENGLISH LANGUAGE ARTS / LITERACY

Grade 6 Assessment, 2014–2015



PERFORMANCE DISTRIBUTION BY %	NUMBER OF STUDENTS	ELA/L AVG OVERALL SCORE
PARCC <div>102031345</div>	631,735	740
STATE <div>81628409</div>	92,635	747
DISTRICT <div>58225114</div>	389	757
READING-FLEMING INTERMED <div>58225114</div>	389	757

PARCC
 Spring 2015

 Grade 6

 English
 Language
 Arts/Literacy

MATHEMATICS

Grade 6 Assessment, 2014–2015



PERFORMANCE DISTRIBUTION BY %	NUMBER OF STUDENTS	MATH AVG OVERALL SCORE
PARCC 	631,545	735
STATE 	93,201	742
DISTRICT 	389	759
READING-FLEMING INTERMED 	389	759

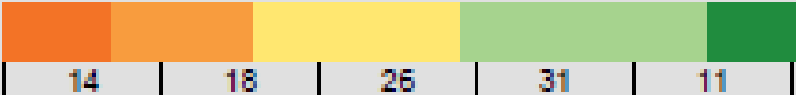

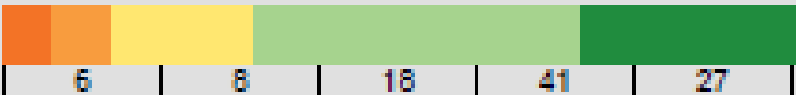
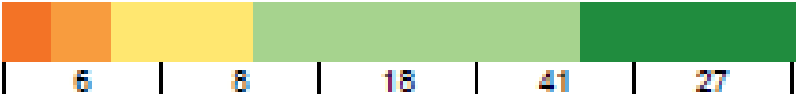
PARCC
Spring 2015

Grade 6

Mathematics

ENGLISH LANGUAGE ARTS / LITERACY

Grade 7 Assessment, 2014–2015

PERFORMANCE DISTRIBUTION BY %	NUMBER OF STUDENTS	ELA/L AVG OVERALL SCORE
PARCC 	623,741	741
STATE 	90,331	749
DISTRICT 	374	763
J.P. CASE MIDDLE SCHOOL 	374	763







PARCC
Spring 2015

Grade 7

English
Language
Arts/Literacy

MATHEMATICS

Grade 7 Assessment, 2014–2015

PERFORMANCE DISTRIBUTION BY %	NUMBER OF STUDENTS	MATH AVG OVERALL SCORE
PARCC 	608,462	734
STATE 	87,430	739
DISTRICT 	301	747
J.P. CASE MIDDLE SCHOOL 	301	747

Excludes all students who completed Algebra I while in grade 7



PARCC
Spring 2015

Grade 7

Mathematics

ENGLISH LANGUAGE ARTS / LITERACY

Grade 8 Assessment, 2014–2015



PERFORMANCE DISTRIBUTION BY %	NUMBER OF STUDENTS	ELA/L AVG OVERALL SCORE
PARCC <div> <div></div> <div>14</div> <div>18</div> <div>26</div> <div>35</div> <div>7</div> </div>	617,336	741
STATE <div> <div></div> <div>12</div> <div>15</div> <div>22</div> <div>39</div> <div>12</div> </div>	88,494	749
DISTRICT <div> <div></div> <div>6</div> <div>11</div> <div>20</div> <div>46</div> <div>16</div> </div>	414	759
J.P. CASE MIDDLE SCHOOL <div> <div></div> <div>6</div> <div>11</div> <div>20</div> <div>46</div> <div>16</div> </div>	414	759

PARCC
 Spring 2015
 Grade 8
 English
 Language
 Arts/Literacy



PARCC
Spring 2015

Grade 8

Mathematics

MATHEMATICS

Grade 8 Assessment, 2014–2015

PERFORMANCE DISTRIBUTION BY %	NUMBER OF STUDENTS	MATH AVG OVERALL SCORE
PARCC 22 26 25 25 2	504,142	728
STATE 22 26 28 23 1	58,158	725
DISTRICT 13 26 44 16 0	241	728
J.P. CASE MIDDLE SCHOOL 13 26 44 16 0	241	728

Excludes all students who completed Algebra I and or Algebra II while in grade 8



PARCC
Spring 2015

Grade 7-8

Algebra I

MATHEMATICS

Algebra I Assessment, 2014–2015

PERFORMANCE DISTRIBUTION BY %	NUMBER OF STUDENTS	MATH AVG OVERALL SCORE
PARCC 13 28 28 29 2	480,463	734
STATE 14 25 25 33 3	91,740	737
DISTRICT 1 2 3 76 19	234	785
J.P. CASE MIDDLE SCHOOL 1 2 3 76 19	234	785

Includes only students who completed Algebra I while in grade 7 or 8



PARCC
Spring 2015

Grade 8

Algebra II

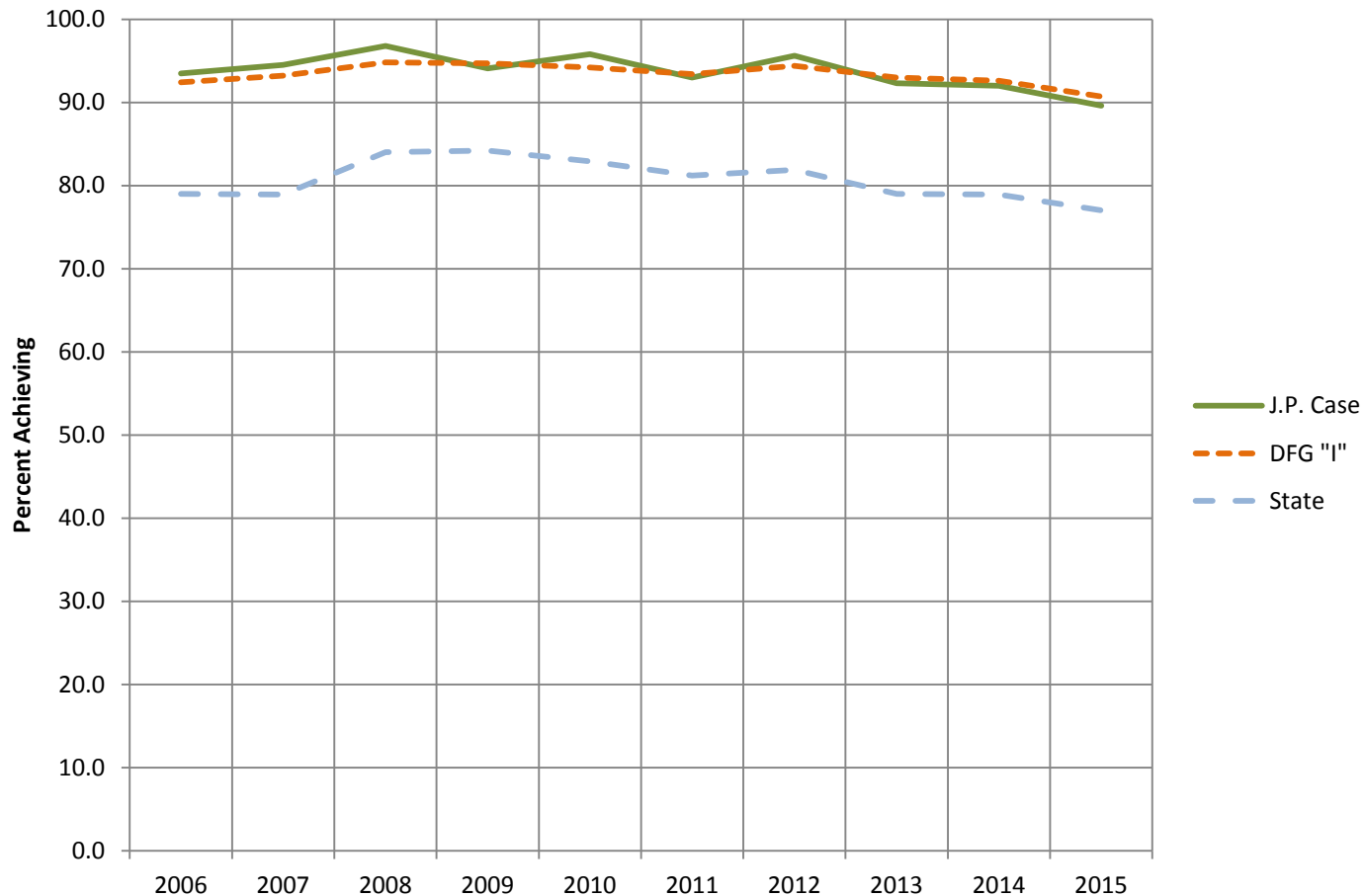
MATHEMATICS

Algebra II Assessment, 2014–2015

PERFORMANCE DISTRIBUTION BY %	NUMBER OF STUDENTS	MATH AVG OVERALL SCORE
<div>PARCC</div> <div><div><div></div><div></div><div></div><div></div><div></div><div></div></div><div><div>32</div><div>26</div><div>21</div><div>20</div><div>1</div><div></div></div></div>	186,821	719
<div>STATE</div> <div><div><div></div><div></div><div></div><div></div><div></div><div></div></div><div><div>32</div><div>25</div><div>20</div><div>22</div><div>2</div><div></div></div></div>	58,026	721
<div>DISTRICT</div> <div>Data suppressed to protect student privacy</div>	10	😊
<div>J.P. CASE MIDDLE SCHOOL</div> <div>Data suppressed to protect student privacy</div>	10	😊

Includes only students who completed Algebra II while in grade 8

Grade 8 Science: Proficient and Above

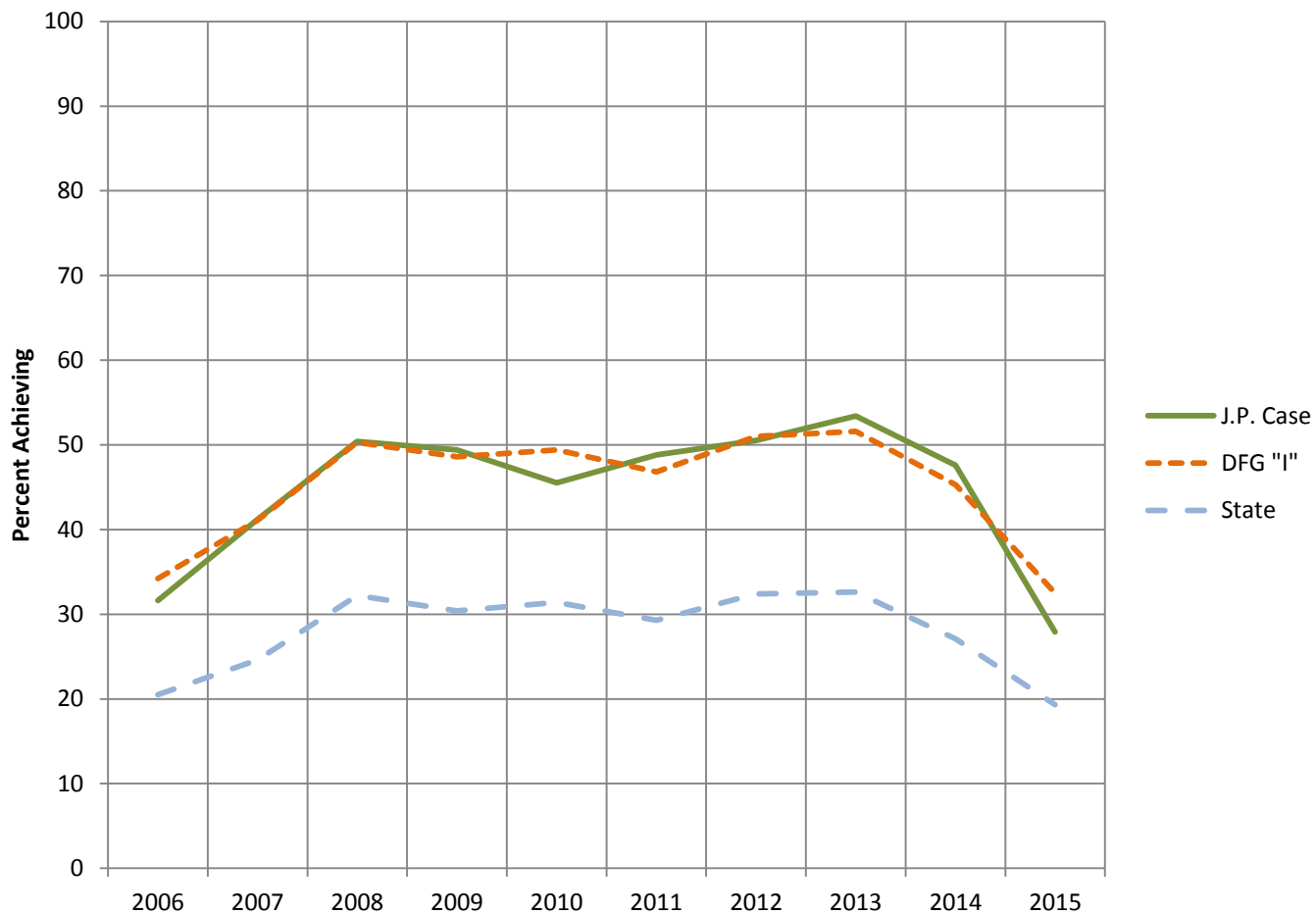


NJASK
Spring 2015

Grade 8

**Proficient &
Above**

Grade 8 Science: Advanced Proficient



NJASK
Spring 2015

Grade 8

**Advanced
Proficient**

QUESTIONS TO GUIDE PARCC DATA REFLECTION

- **How will we use PARCC data to identify strengths and gaps that exist in curriculum and instruction?**
- **How will we use PARCC data to inform the conversations of our educators?**
- **What can we learn about where additional professional resources are needed to meet the learning needs of all students?**

YEAR ONE DATA ANALYSIS PLAN: DRILLING DOWN



**District and School Level Data: Math, ELA,
reading and writing, and also by grade levels**

Disaggregated data, by subgroups

**Disaggregated data by
categories, (i.e., standards
sub-claims)**

Item analysis

**Student-level
analysis**

RESOURCES FOR PARENTS

Curriculum

- Department Members
- **PARCC Parent Page**
- Parent Portal
- Curriculum Standards: CCSS & NJCCS
- Curriculum Guides
- Student Assessment Program
- ESEA Title I Parent Resource Page
- Mathematics
- Language Arts/Literacy
- + Social Studies
- Science
- Council of Instruction Agendas
- Council of Instruction Minutes

PARTNERSHIP FOR ASSESSMENT OF READINESS FOR COLLEGE AND CAREER (PARCC)

Resources for Understanding Score Reports

Visit: <http://www.bealearninghero.org/>

- The Be a Learning Hero video helps parents navigate the changes happening in classrooms across the country so they can help their children be successful in school. They provide resources and information for parents from some of the nation's most well-respected education and parent organizations including the National PTA, Common Sense Media and GreatSchools.



Visit PARCC Online - <http://www.parcconline.org/resources/parent-resources>

- Take a Sample Test
- What's Different About the PARCC Test?
- English Language Arts/Literacy Parent Guide for Student Report (English/Spanish)
- Mathematics Parent Guide for Student Report (English/Spanish)
- PARCC Performance Level Setting - explains the process used to establish cut-offs for each level (English/Spanish)

Visit Understand the Score: <http://understandthescore.org/>

- Video on how to interpret PARCC score reports
- Score Report Guide
- Resources for Parents and FAQ's
- About the PARCC Assessment
- NJ-specific Information

New Jersey specific information: <http://www.state.nj.us/education/assessment/>

- Video, Fact Sheets, and FAQ's regarding the PARCC
- Educator, Parent, and Student Resources
- Sample Questions

Review: [PARCC Score Report PowerPoint](#)

- Informative PowerPoint presentation with screen shots and explanations of how to read and interpret your child's PARCC Score Report.

VIDEO: UNDERSTANDING THE SCORE REPORT

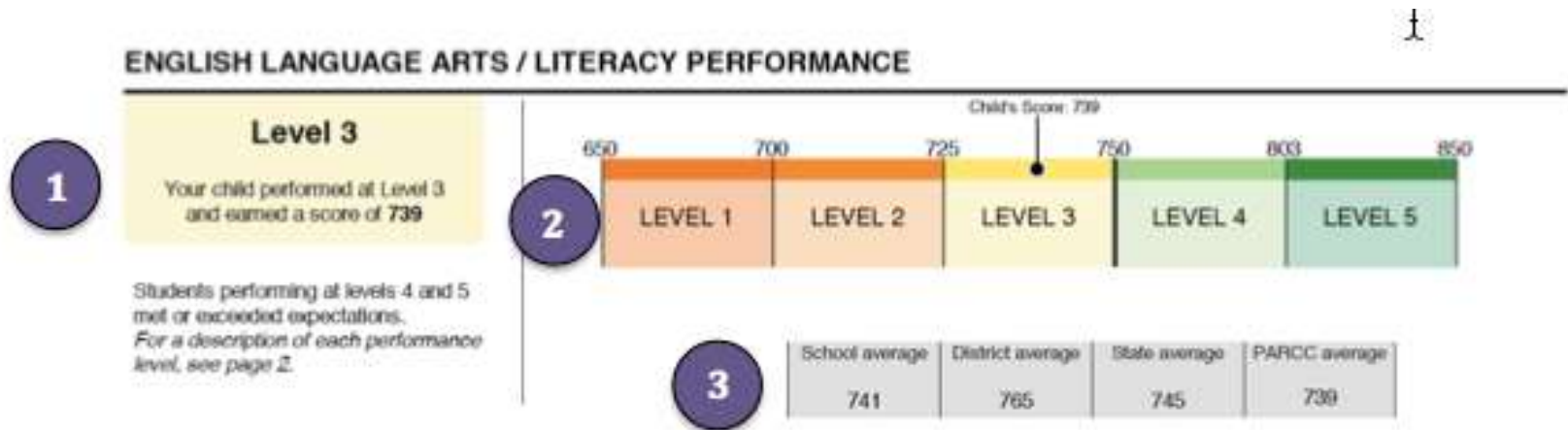
Top resources for parents



New Video: Understanding the Score Report

Teachers walk through the score report step-by-step. They let parents know what to expect and provide tips on how they can support their child. [▶ Watch the video >](#)

PARENT GUIDE TO THE SCORE REPORTS



Key Information Provided in the Score Report

1 **Overall Student Performance** – This section of the report shows your student's overall numerical score and the performance level achieved based on that score. Level 1 indicates a student is not yet meeting grade level expectations and Level 5 indicates the student has a strong understanding of grade level material.

Page two of the score report provides additional information about your child's score and level of performance. Level 4 and above indicates that a student meets or exceeds grade level expectations and is well prepared for the next grade level.

2 **Score Graph** – The colored graph shows the score ranges for each performance level and where your child's score falls within that range. This gives you an indication of how close your child is to achieving the next level.

HOW TO HELP YOUR CHILD

Where is my child doing well? Where does he or she need additional support? And, how can I help?


The score reports provide more than just number scores; they also provide information about subsets of skills that show where your child excels and where he or she may need more support. You can use this information to support your child every day at home. For example, if your child is excelling in reading, you might challenge him or her to read more challenging books, to analyze and report to you on the day's news from the newspaper or to research and dig deeper into subjects of interest. If your child needs to improve in a certain subject area, talk to his or her teacher about additional support and materials, or use our online resources to locate activities you can use to reinforce learning at home. You can also use everyday moments as educational opportunities to enhance your child's learning. For example, if your child is struggling with fractions, have him or her help you in the kitchen and use measuring cups or pizza slices to help explain the relationship of parts to a whole.

<http://understandthescore.org/>

Continue Reading

ADDITIONAL RESOURCES FOR PARENTS

Be a Learning Hero Learning Tools

Helpful tools to support your child's learning at home in English Language Arts and math, as well as links to great resources.  [Visit website >](#)

<http://understandthescore.org/>