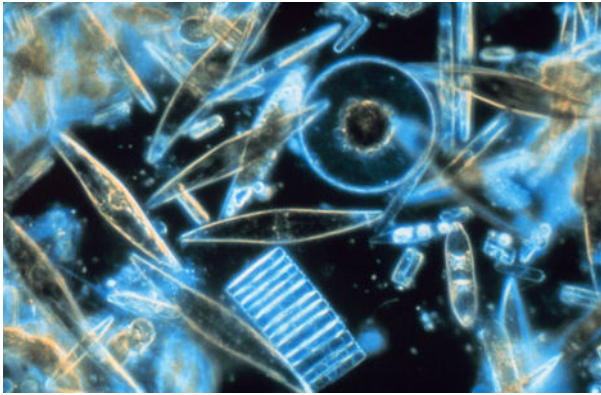


Food Chain 1



Diatoms- golden brown algae

Photosynthetic protists

Consumed by: copepods,
amphipods, some insect larvae



Harpacticoid copepod

Consumes: diatoms and other
phytoplankton (single celled
algae)

Consumed by: caddis fly larvae,
sticklebacks, young salmon,
polychaete worms



Nereid worm

Consumes: small invertebrates
(amphipods, copepods, insect
larvae), bacteria

Consumed by: caddis fly larvae,
sticklebacks, sculpins, kingfishers



3-spined stickleback

Consumes: insect larvae, small crustaceans, worms

Consumed by: staghorn sculpin, summer steelhead, heron, cormorant, belted kingfisher



Belted kingfisher

Consumes: 3-spined stickleback, young salmon, trout, sculpins

Consumed by: raccoons, large raptors (hawks, eagles, owls)

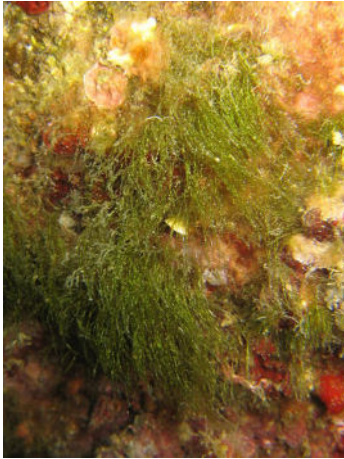


Oligochaete worm

Scavenger- consumes detritus and waste material

Consumed by: dragonfly nymphs, sticklebacks, caddisfly larvae

Food Chain 2



Chlorophyte algae

Photosynthetic protist

Consumed by: small crustaceans (copepods, amphipods), mayfly larvae, snails



Mayfly

Consume: algae, plant material

Consumed by: marsh wren, shrew, caddisfly larvae, dragonfly nymphs



Marsh wren

Consumes: terrestrial and aquatic insects, isopods

Consumed by: sharp-shinned hawk, raccoons eat eggs



Hawk

Consumes: shrews, smaller birds.

Consumed by: eagles and larger hawks



Isopod

Scavenger- consumes waste and decaying material.

Consumed by: caddisfly larvae, dragonfly nymph, shrews, marsh wrens

Food Chain 3



Marshgrass

Photosynthetic flowering plant

Consumed by: diptera larvae, nematode worms, snails



Diptera (fly)

Consumes: larvae eat algae, leaves, fruit, or roots; adults suck up plant and animal fluids from dead or alive organisms.

Consumed by: larvae consumed by caddis fly larvae and dragonfly nymphs, and young salmon; adults are consumed by shrews and other small rodents



Shrew

Consume: insects, small birds, snakes, mice, and other shrews.

Consumed by: Blue heron, hawk, eagle, raccoons



Blue heron

Consume: small mammals, insects, small fish, and amphibians.

Consumed by: raccoons eat eggs, adults may be consumed by bears



Bacteria

Decomposer: breaks down dead and waste material

Food Chain 4



Rice cutgrass

Photosynthetic flowering plant

Consumed by: insects, snails, ducks eat the seeds of the plant



Snail

Consumes: marsh cutgrass, algae, diatoms and other plant materials.

Consumed by: marsh fly, nereid worm, marsh wren, shrew, dragonfly nymph, and nematode worm



Marsh fly

Consumes: snails, copepods, mayfly, diptera, amphipods, and copepods.

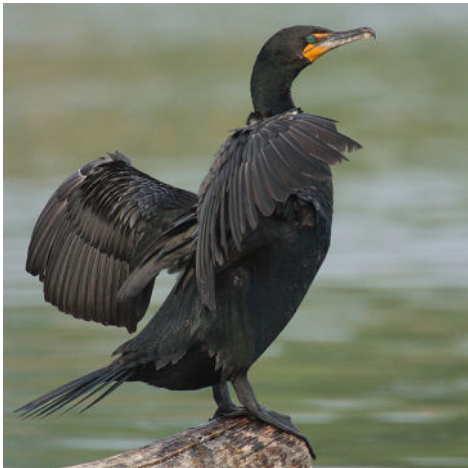
Consumed by: summer steelhead, blue heron, three spine stickleback, Chinook salmon, staghorn sculpin, and flounder



Summer steelhead:

Consumes: insect larvae, three spine stickleback, and other small fish.

Consumed by: hawks, blue heron, double crested cormorant, brown pelican and western gull.



Double-crested cormorant

Consumes: summer steelhead, three spine stickleback, shrew, crayfish, aquatic insects, shrimp, snails, mussels, marsh wren, amphibians, Chinook salmon, flounder, and staghorn sculpin.

Consumed by: Bald Eagle and Great Horned Owl

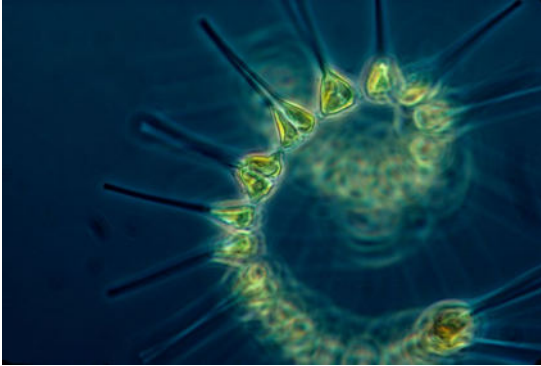


Daniel Neall; *Mushroom Observer*

Aquatic fungus

Decomposer- breaks down dead and decaying material to chemical components.

Food Chain 5



Phytoplankton

Photosynthetic protists

Consumed by: crustaceans (amphipods), zooplankton, copepod, mayfly, diptera, and snail



Amphipod

Consumes: phytoplankton, diatoms, algae, and marsh grass.

Consumed by: dragonfly nymph, Nereid worm, mayfly, shrew, marsh fly, and nematode worm.



Dragonfly nymph

Consumes: amphipods, copepod, mayfly, and diptera,

Consumed by: caddis fly larvae, 3 spine stickleback, hawk, blue heron, and summer steelhead. staghorn sculpin.



Caddis fly larvae

Consumes: dragonfly nymph, nereid worm, marsh fly, nematode worm

Consumed by: Chinook salmon, three spine stickleback, hawks, blue heron, summer steel head, and staghorn sculpin.



Chinook salmon

Consumes: caddis fly larvae, three spine stickleback, and staghorn sculpin.

Consumed by: brown pelican, blue heron, hawk, and double crested cormorant.

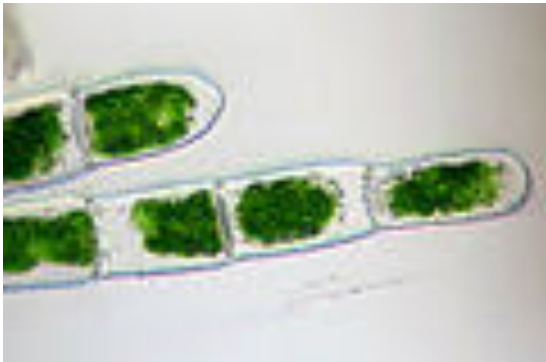


Brown pelican

Consumes: chinook salmon, along with other fish, including summer steelhead, may also feed on crustaceans.

Consumed by: adults have few predators.

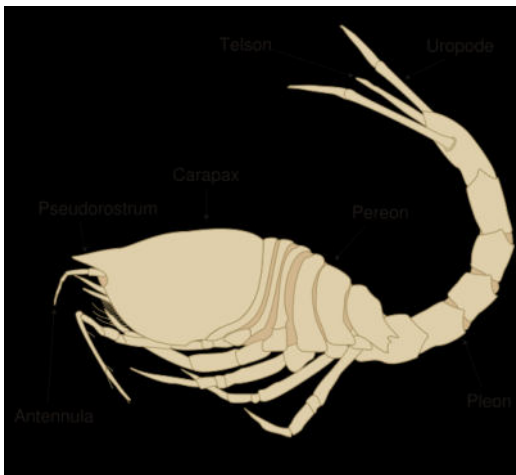
Food Chain 6



Algae

Photosynthetic protist

Consumed by: copepods, amphipods, snails, mayflies.



Cumacea (copepod)

Consumes: Algae, diatoms, phytoplankton, rice cutgrass, and marsh grass. And marsh wren.

Consumed by: nematode worm, nereid worm, shrew, marsh fly, and dragonfly nymph.



Nematode worm

Consumes: cumacea,, copepod, may fly, diptera, snail, and amphipod.

Consumed by staghorn sculpin, three spine stickleback, hawk, summer steelhead, and caddis fly larvae.



Staghorn sculpin

Consumes: nematode worms, nereid worm, may fly, and dragonfly nymph.

Consumed by: flounder, belted kingfisher, hawk, blue heron, Chinook salmon, and summer steelhead.



Flounder

Consumes: Staghorn Sculpin, and three spine stickleback.

Consumed by: Western gull, blue heron, double crested cormorant, brown pelican, and hawk.



Western Gull

Consumes: flounder, three spine stickleback, marsh wren, and shrew. Scavenges trash and waste material

Consumed by: eagles, raccoons eat eggs