

Franklin McKinley School District
645 Wool Creek Dr., San Jose, CA 95112
Adapted Physical Education

Ashley Britton Ashley.Britton@fmsd.org	Lemi Hayashi Lemi.Hayashi@fmsd.org
Bridges Academy Franklin Elementary Meadows Elementary Kennedy Elementary McKinley Elementary Santee Elementary Stonegate Elementary	Dahl Elementary Lairon College Preparatory Academy Hellyer Elementary Los Arboles Literacy and Technology Academy Ramblewood Elementary Shirakawa Elementary Sylvandale Middle Windmill Springs Elementary

What is Adapted Physical Education (APE): Adapted Physical Education (APE) is for individuals with exceptional needs who require developmental or corrective instruction and who are precluded from participation in the activities of the general physical education program, modified general physical education program, or in a specially designed physical education program in a special class (California Code of Regulations, Title 5, Education, Section 3051.5 (a))

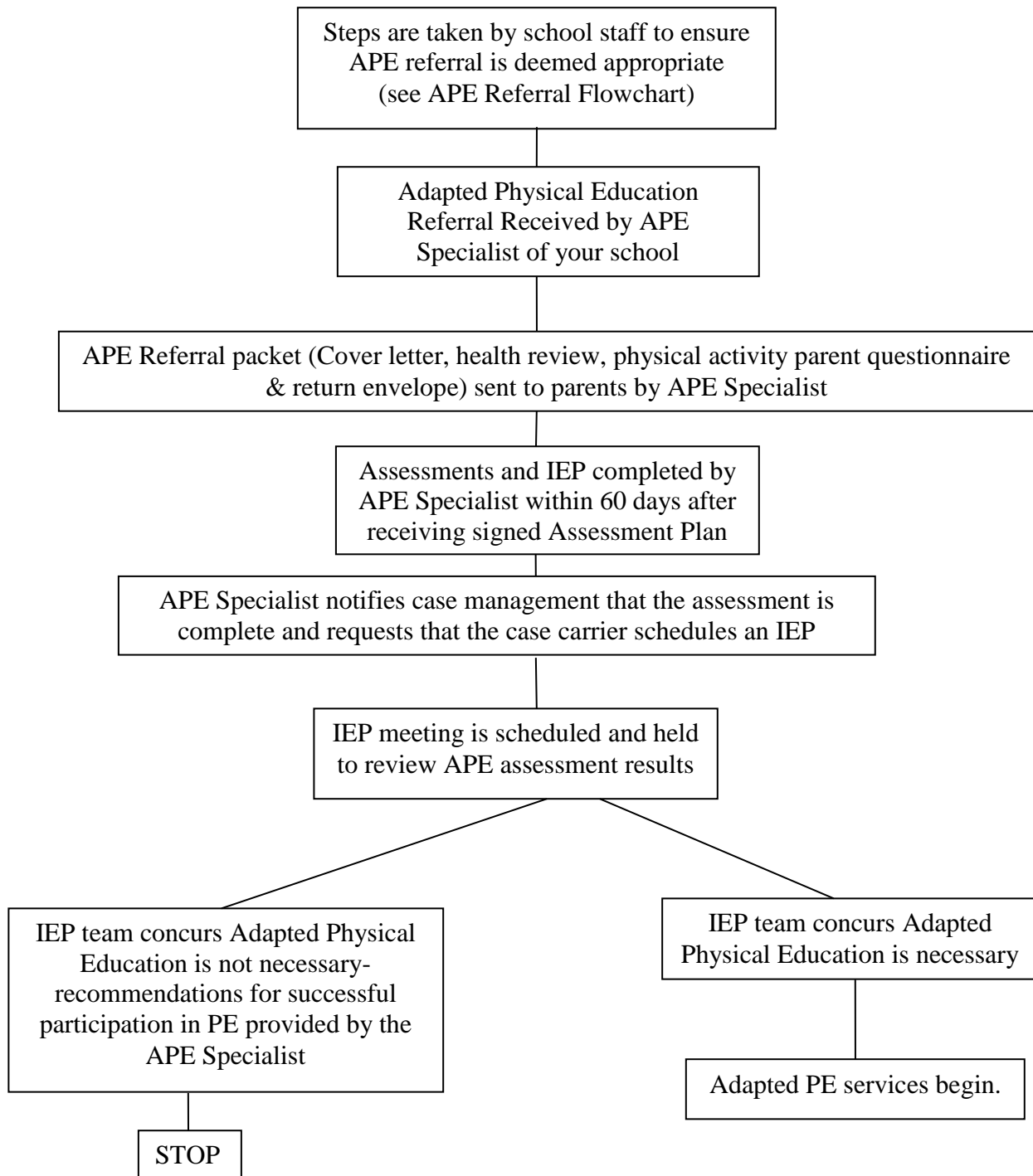
Adapted vs. Adaptive: In California, the physical education program designed for individuals with disabilities is called adapted physical education as it is defined in 5 CCR Sec. 3051.5 The program is *adapted* to meet the needs of each student through modifications and accommodations. The student is not required to adapt to the conditions of the program as would be implied with **adaptive** physical education as in adaptive behaviors (*Adapted Physical Education Guidelines for California Schools – Chapter 1*, California Department of Education, Special Education Division, 2012).

Spectrum of Services: APE occurs on a spectrum ranging from the least intrusive (collaboration between educators working with the student) to the most intrusive (direct, pullout services with the student.)

Prior to a student receiving 1:1 direct services, best practice is to have collaboration occur between all educators working with the student to ensure the student is in the most appropriate and least restrictive environment. As per best practice, the APE specialist should be used to provide consultation to general physical education teachers in order to assist them with alternative instructional plans or with any modifications or adaptations that the student may require in order to participate safely and successfully in a general PE class with their peers. APE services should not be included in a student's IEP if their needs can be met adequately in the mainstream setting, or the least restrictive environment.

A referral for a formal APE assessment should only be considered after all modifications/adaptations have been fully exhausted first by the general physical education teacher, all of which has resulted in little to no success. Documentation of the outcomes is critical to the process.

ADAPTED PHYSICAL EDUCATION REFERRAL PROCESS



The Adapted PE Specialist has 15 days from time of referral, to send Assessment Plan to parent/guardian. The 60 day timeline begins once the signed Assessment Plan is received by the Adapted PE Specialist. The APE Specialist has 60 days to assess and hold IEP.

Flowchart to Determine if Adapted Physical Education Referral is Appropriate

Does the student have a current IEP or a qualifying disability under IDEA?

YES

Is the student participating in general physical education?

YES

Has teacher in charge of providing PE to student in question implemented modifications or adaptations to: PE curriculum, equipment, and/or teaching strategies, and documented these results for 3-4 weeks on the modifications form; and student is still not being successful? (APE Specialist to provide teacher with modifications form)

NO SUCCESS

Contact the APE Specialist of your school

NO

NO

STOP

PROCEED

NO

Enroll student in general PE class and attempt & document modifications to PE curriculum, equipment, teaching style on modifications form provided by school psychologist, OR provide APE Specialist with reason participation is not possible (medical condition, etc.)

SUCCESS

STOP!
Enjoy PE!

To assist us in the assessment process, please send any additional information (nursing evaluation, motor assessments, PT/OT evaluations, etc.) that would be useful during the evaluation process, to the Adapted PE Specialist.