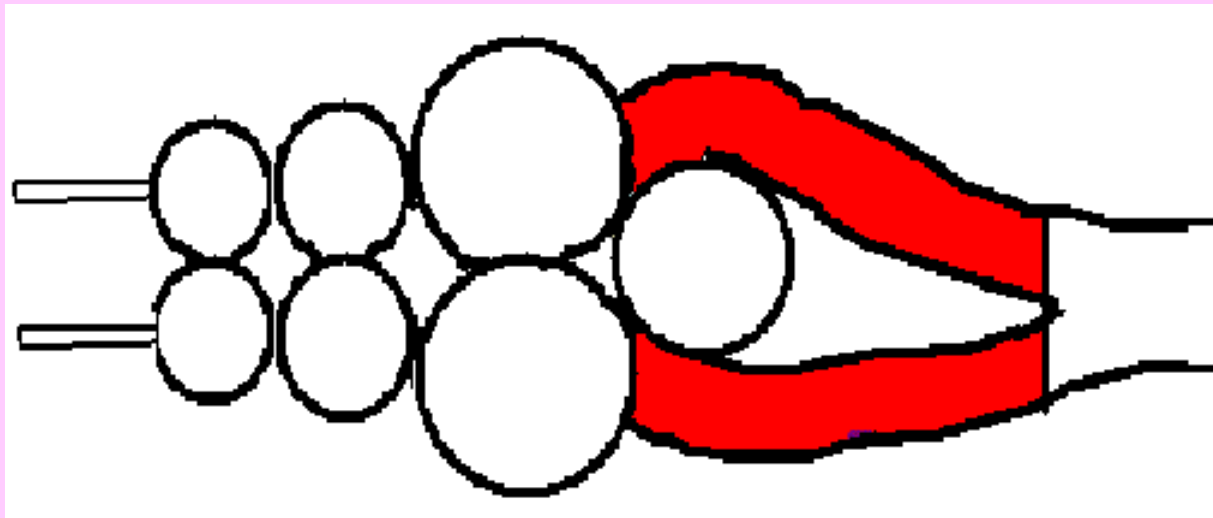


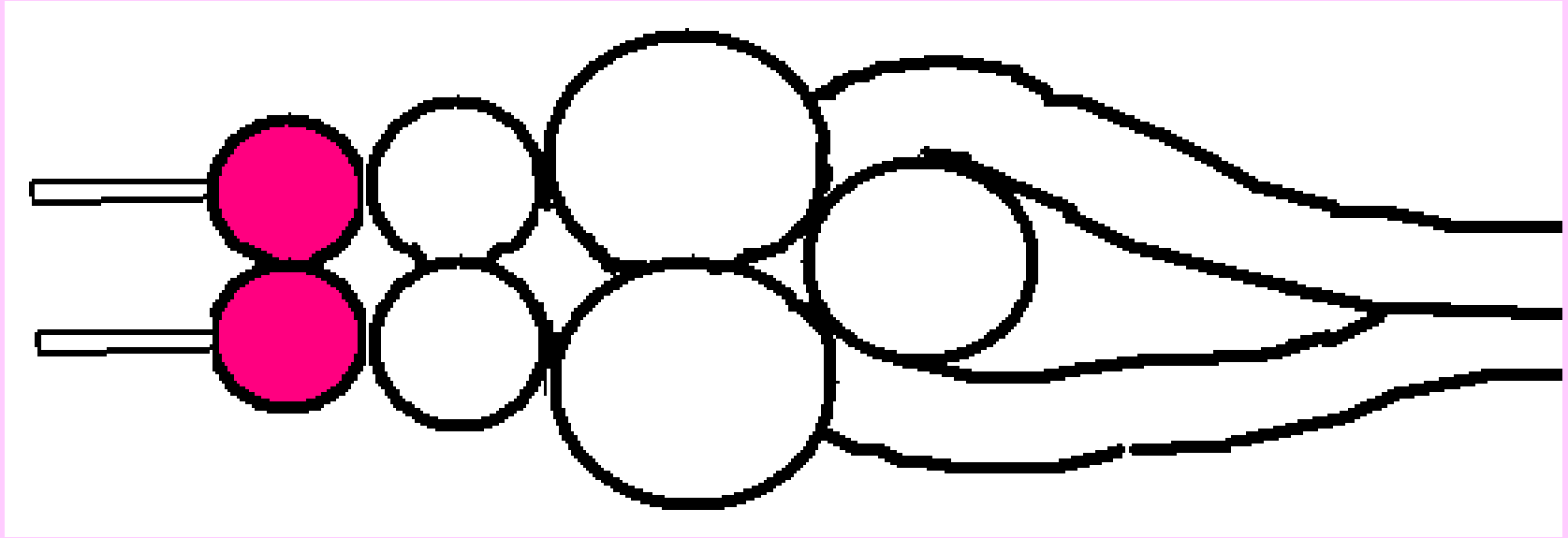
FISH HEART and BRAIN

Slide show by Kelly Riedell/Brookings Biology



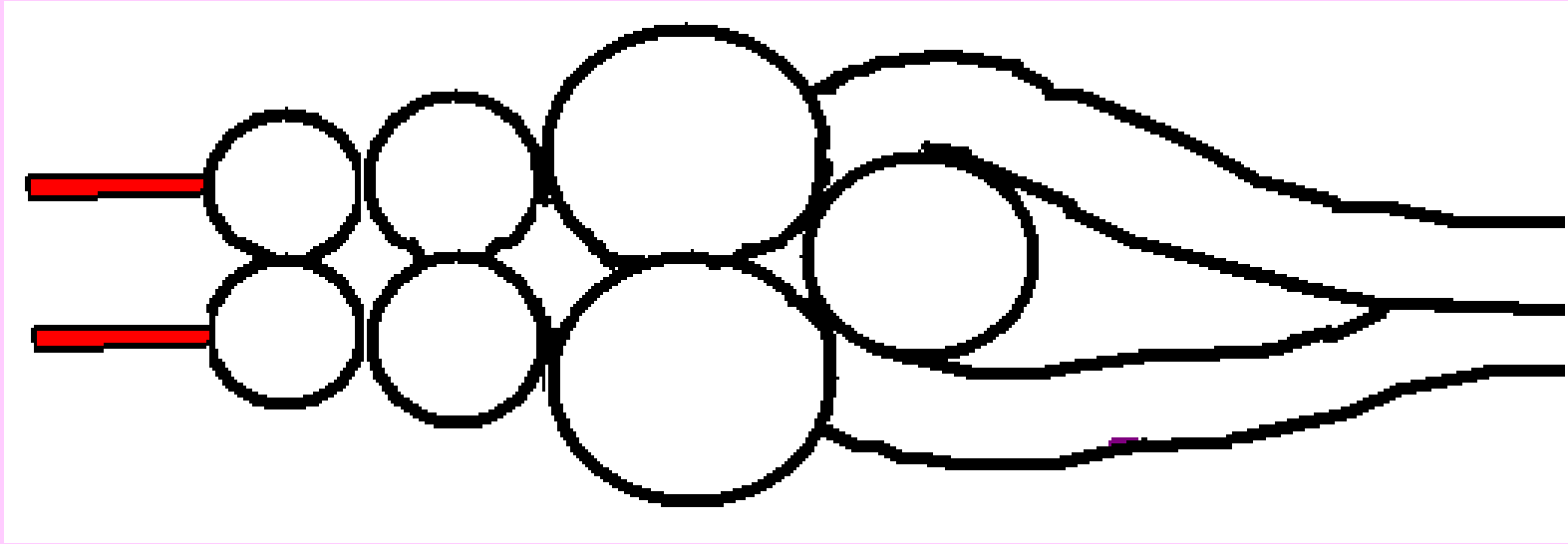
This brain part is the Medulla oblongata

It controls Internal organs
that work without
thinking about it



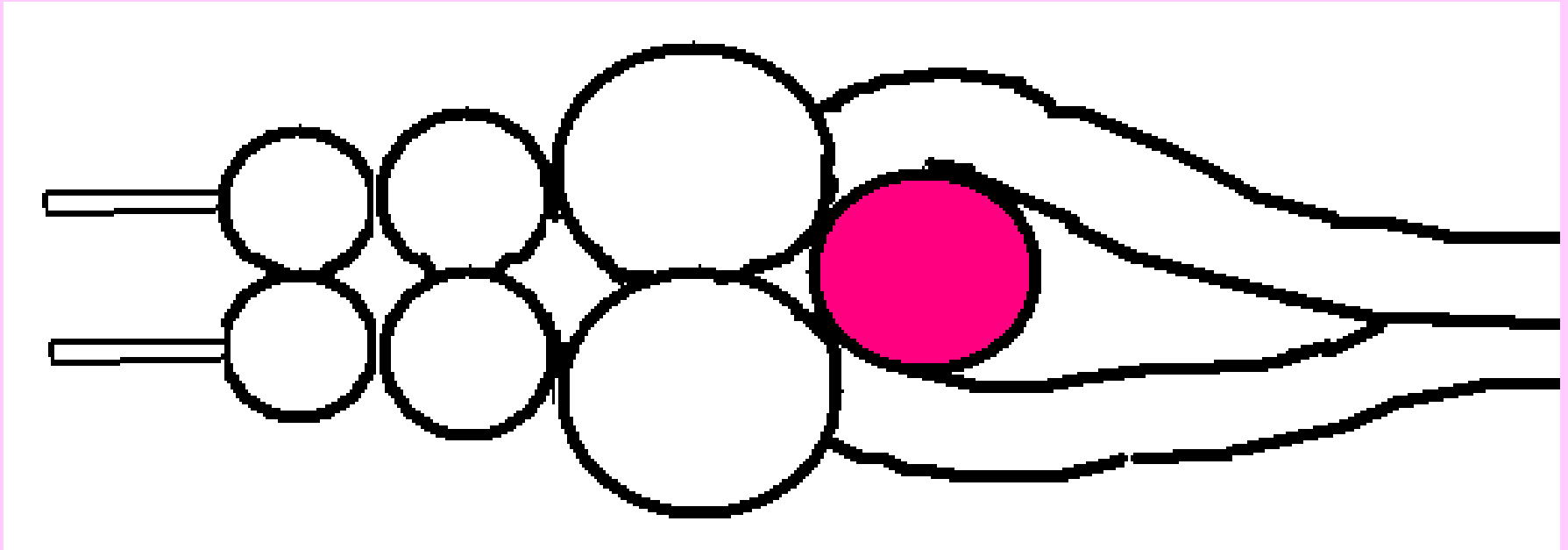
This brain part is the Olfactory bulbs

It receives sense info for smell



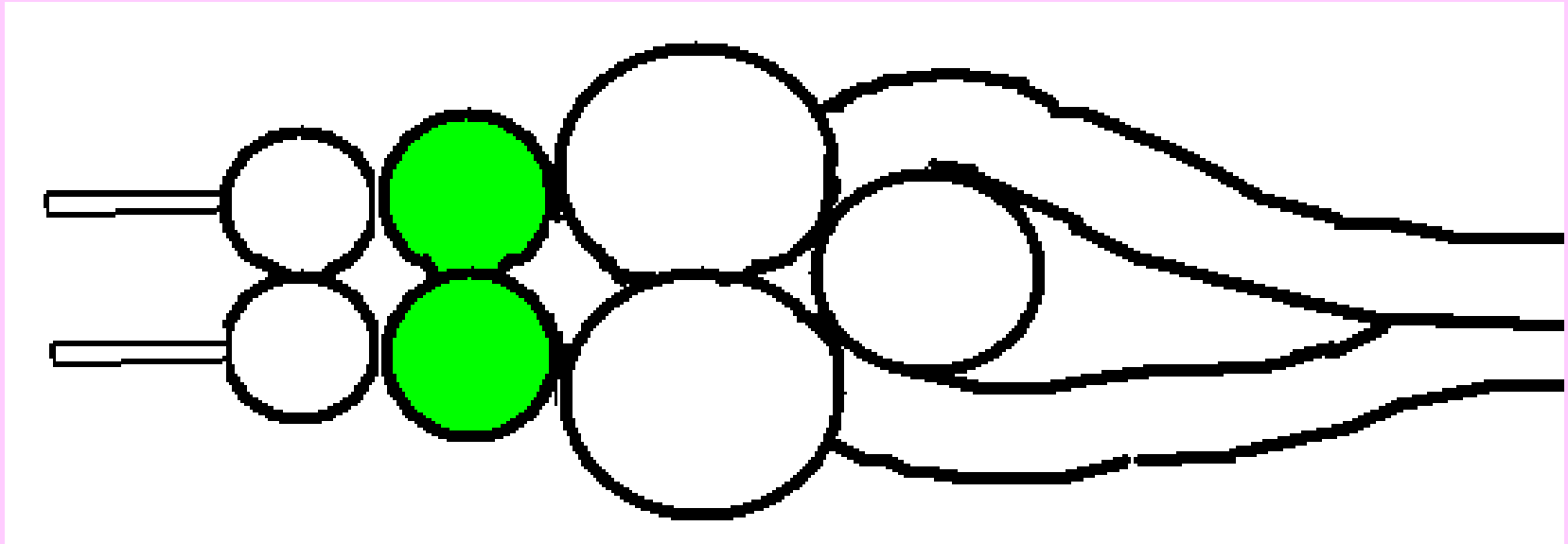
These brain parts are the Olfactory nerves

They carry info from nostrils to the brain.



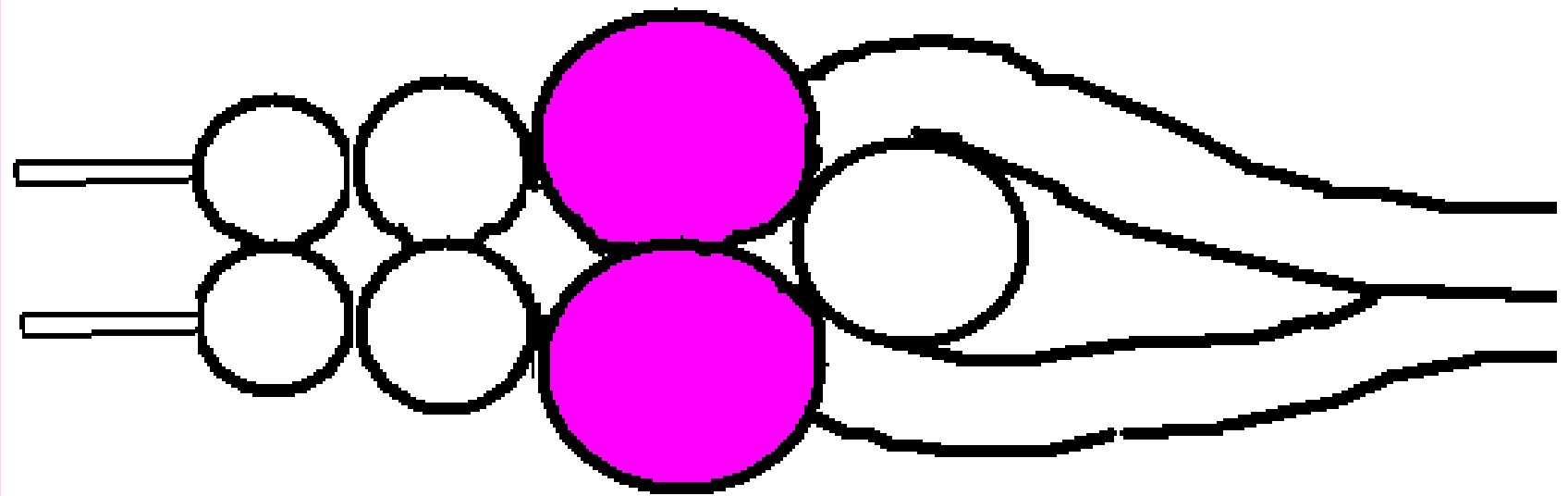
This brain part is the cerebellum

It controls Motor coordination and balance



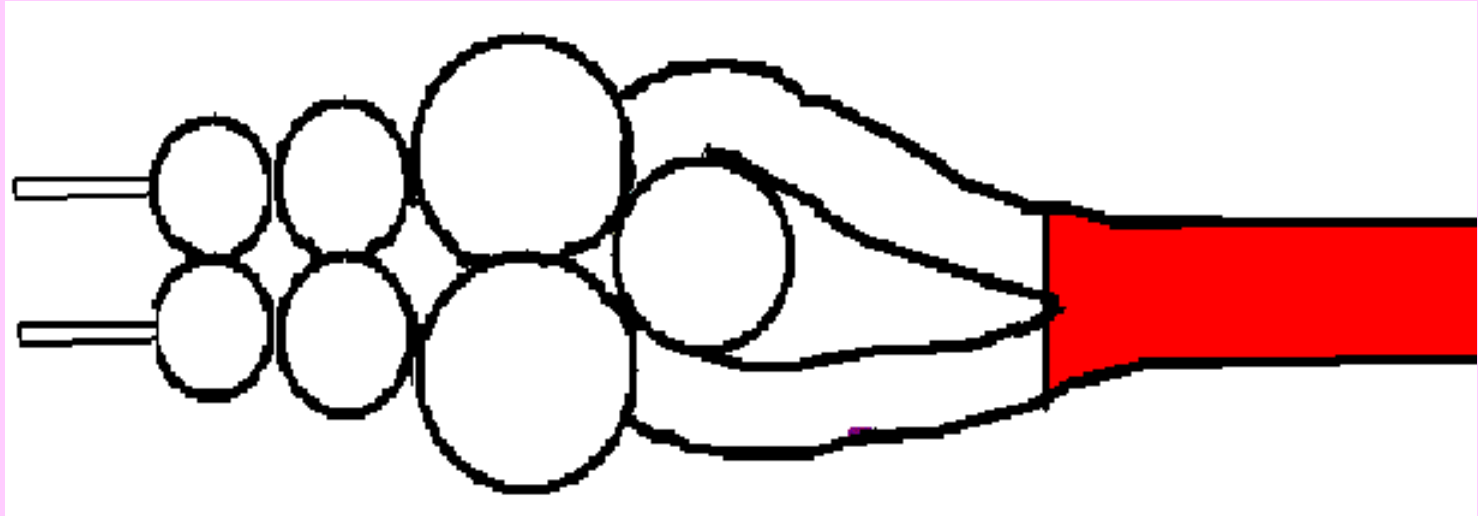
This brain part is the cerebrum

Its function is Coordinate info from
all other parts
“HIGHER thinking”



These brain parts are the Optic tectum

They receive info about
Vision, hearing (auditory) & lateral line .



This colored area is the Spinal cord

In vertebrates this is surrounded by bones
called vertebrae

What's the part?

Relays sensory info from body;

Controls autonomic

internal organs

Medulla oblongata

Carries nerve signals to
and from brain and body

Spinal cord

Receives info for vision,
hearing ,& lateral line

Optic tectum

What's the part?

Receives and processes info
about smell _____

Olfactory lobes

Controls motor function;
muscle coordination & balance _____

cerebellum

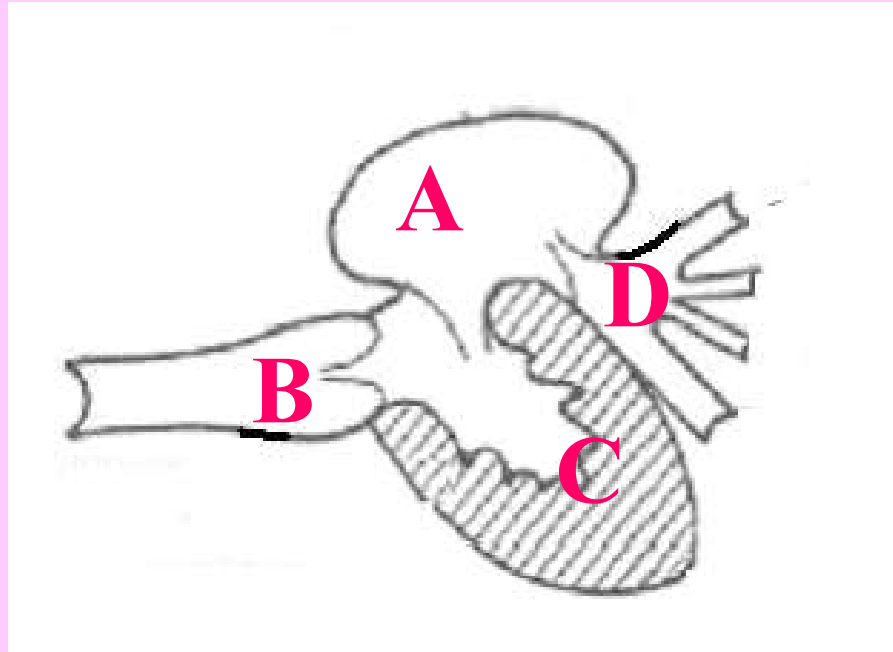
Coordinates info from
other parts; Higher thinking
(memory; learning; reasoning) _____

cerebrum

Carries info to and from
brain and body _____

Spinal cord

Name the heart parts



A= **ATRIUM**

B= **CONUS ARTERIOSUS**

C= **VENTRICLE**

D= **SINUS VENOSUS**

SHOW THE PATH BLOOD FOLLOWS FROM THE BODY, THROUGH THE HEART, and BACK

SINUS VENOSUS



ATRIUM



VENTRICLE



CONUS ARTERIOSUS



BODY ORGANS



GILLS



What's the part?

Receives blood from
sinus venosus and sends
it to ventricle

atrium

ventricle

Pumping chamber

Vessels that carry blood
back to the heart

veins

What's the part?

Small blood vessels that
connect arteries and veins
where gas, nutrient, waste
exchange occurs capillaries

Blood leaving conus arteriosus goes here next gills

Smooths flow of blood **Conus arteriosus**
leaving the heart

What's the part?

Receives blood
returning to heart
from body Sinus venosus

ventricle

Pumping chamber _____

Vessels that carry blood **arteries**
away from the heart _____

What's the part?

Number of chambers

in a fish heart **TWO (atrium & ventricle)**

Type of circulatory system

in a fish **closed**

Organ that makes, stores,
and processes red blood cells

spleen