

Famous Paintings

ART PARODY ASSIGNMENT

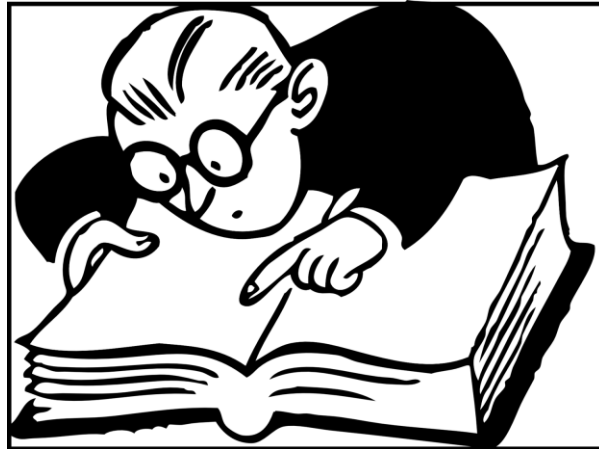
What is a parody?

Noun: an imitation of the style of a particular writer, artist, or genre with deliberate exaggeration for comic effect.



Before you even think about drawing ANYTHING!!!!

READ **EVERY SINGLE SLIDE** ON THIS
SLIDE SHOW FIRST!!!!!!!



THE ASSIGNMENT

You are going to select a cartoon-type character that you like.

- a) You will draw it as it normally would look like
- b) and then you will recreate it or incorporate it as a parody of 2 different famous paintings.

Each of these will be on a separate 6x9" mixed media paper in any media you choose. AT LEAST ONE MUST BE MIXED MEDIA.

So in the end you will have created the original and 2 different parody drawings/paintings for a total of 3 pieces of art.

Choices

1. I have provided many famous paintings for you in the slide show to save you time from looking all over the internet.



2. I have also provided you with several examples of ideas that other artists have come up with, from very simple to more complex parodies.

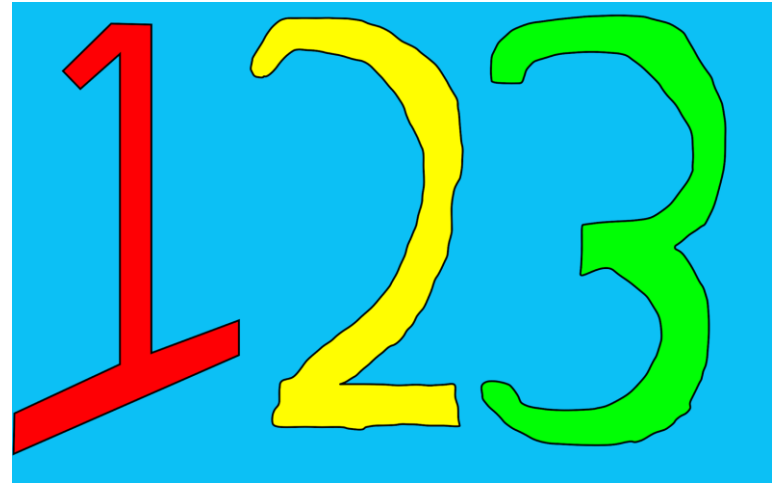


Rubrics: This assignment is out of a total 200 marks
spaced over 3 rubrics

Rubric #1 is for your
drawing/painting of your original
character

Rubric #2 is for your parody
drawing/paintings.

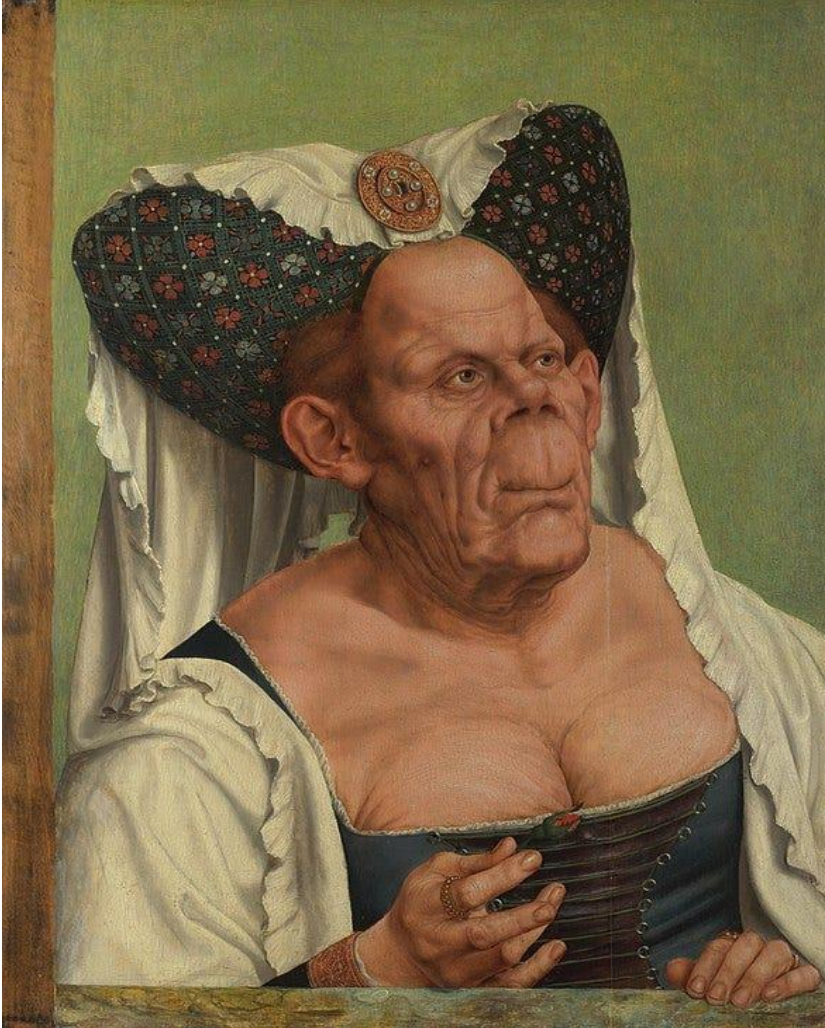
Rubric 3 is the very last slide of
this assignment slide show



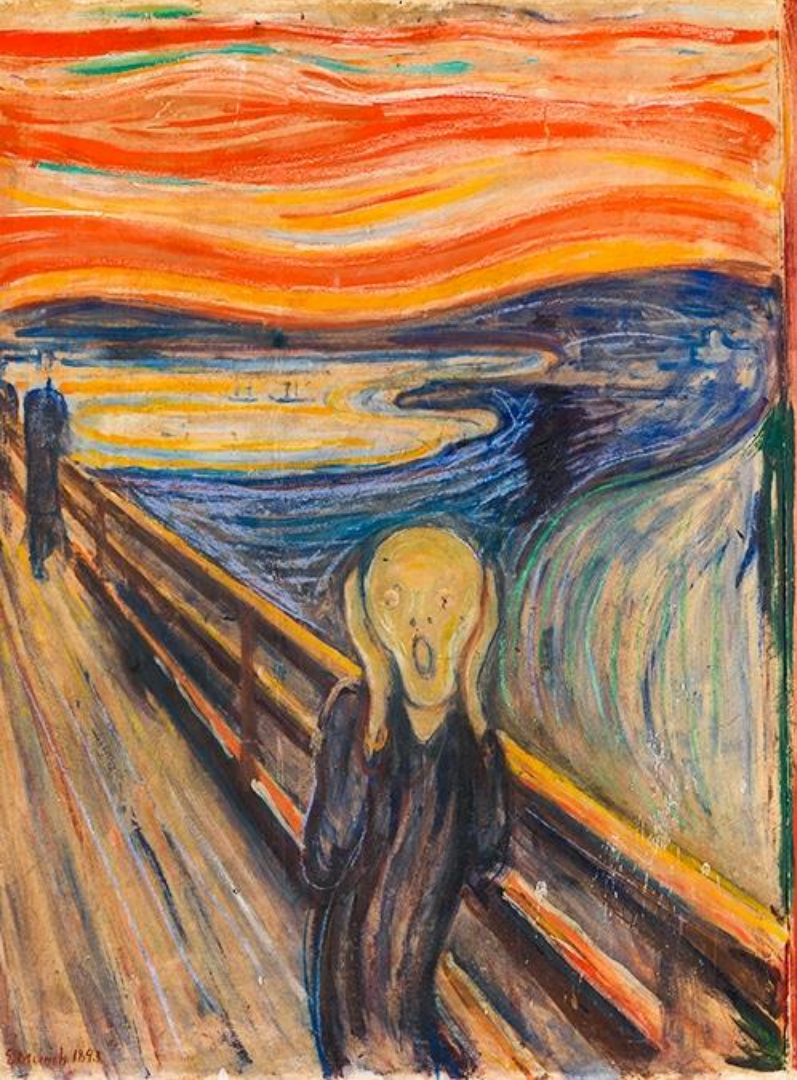
#1 For the Original Character /25 possible marks	Level 4 (5 marks)	Level 3 (3 marks)
Cleanliness of image	Character is created using clean lines,	Character was randomly drawn into painting without much consideration or effort
Colouring: whether coloured pencil or paint or marker (See visual rubric)	Solid colouring with no white showing	Mostly solid colouring with some white poking through
Mixed media	2 or more different media used	2 media used favouring one over the other
Spaced used	used up 75-100% of the paper	Used 60-75% of the paper
Pencil marks showing	None	Some light lines are visible

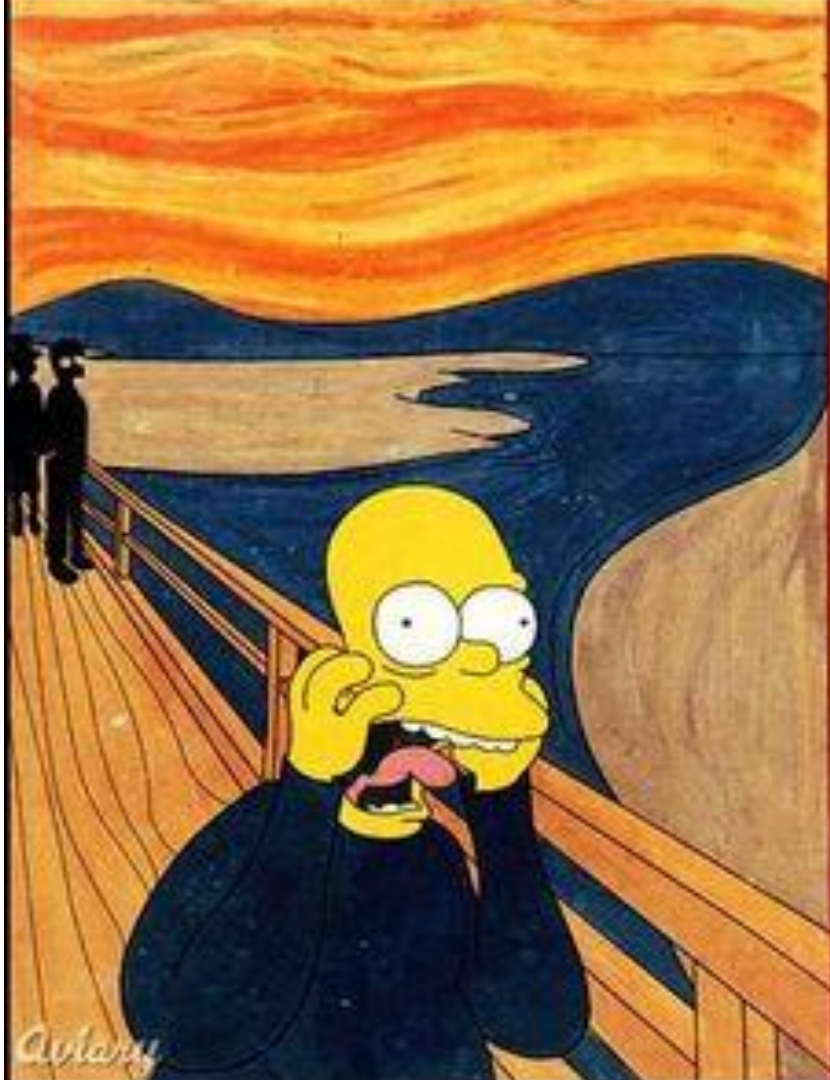
#2 For each of the 2 Parody Pieces /25 possible marks each	Level 4 (5 marks)	Level 3 (3 marks)
Inclusion of character in the parody	Creative inclusion of character	Character was randomly drawn into painting without much consideration or effort
Colouring: whether coloured pencil or paint or marker (See visual rubric)	Solid colouring with no white showing	Mostly solid colouring with some white poking through
Mixed media	2 or more different media	2 media used favouring one over the other
Spaced used	used up 75-100% of the paper	Used 60-75% of the paper
Pencil marks showing	None	Some light lines are visible



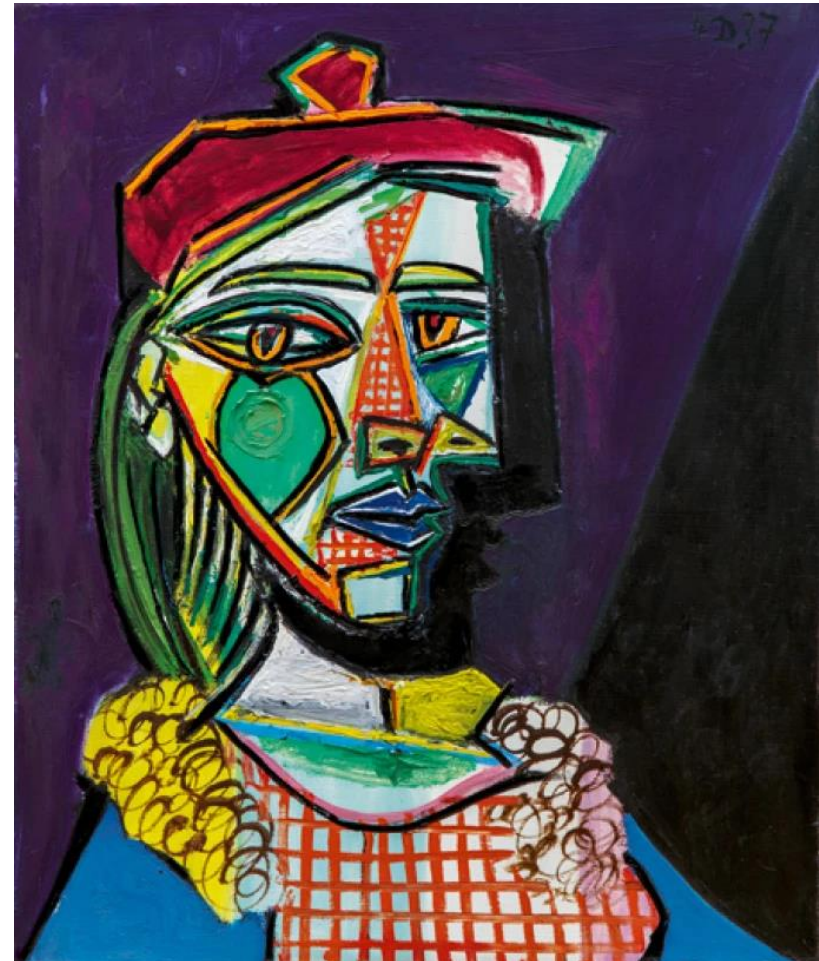






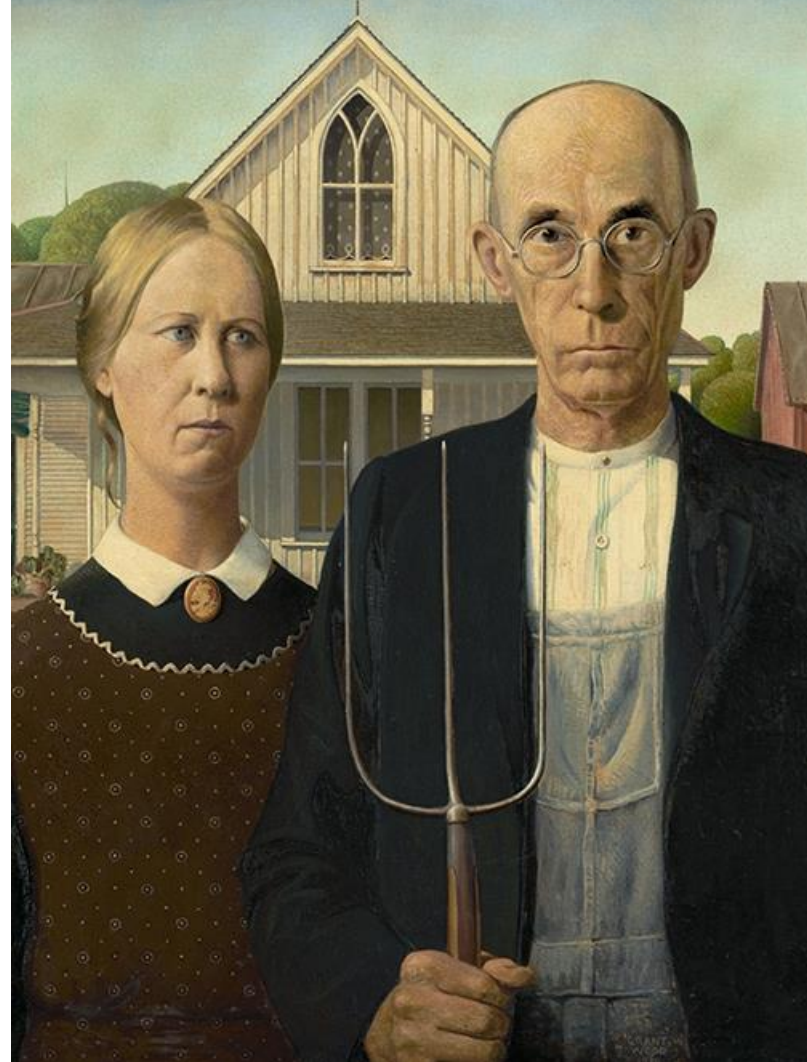


















富嶽三十六景 神奈川沖
浪裏

江村 嘉郎

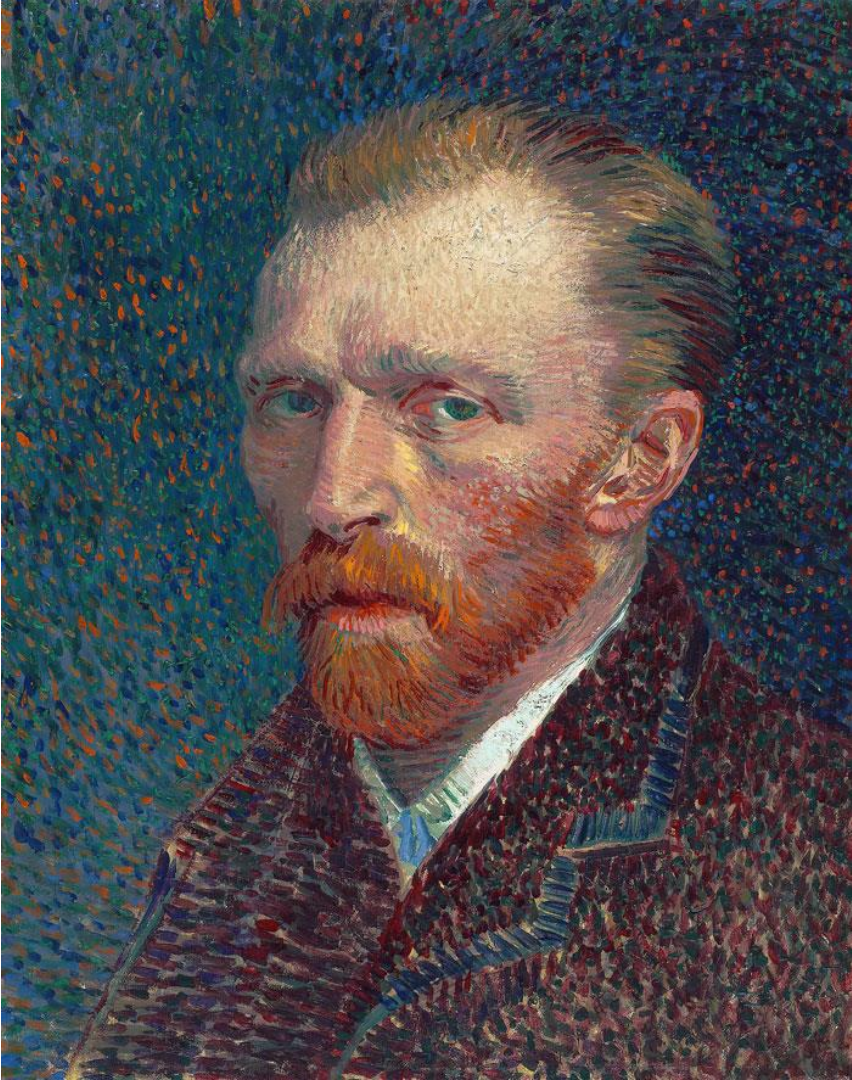


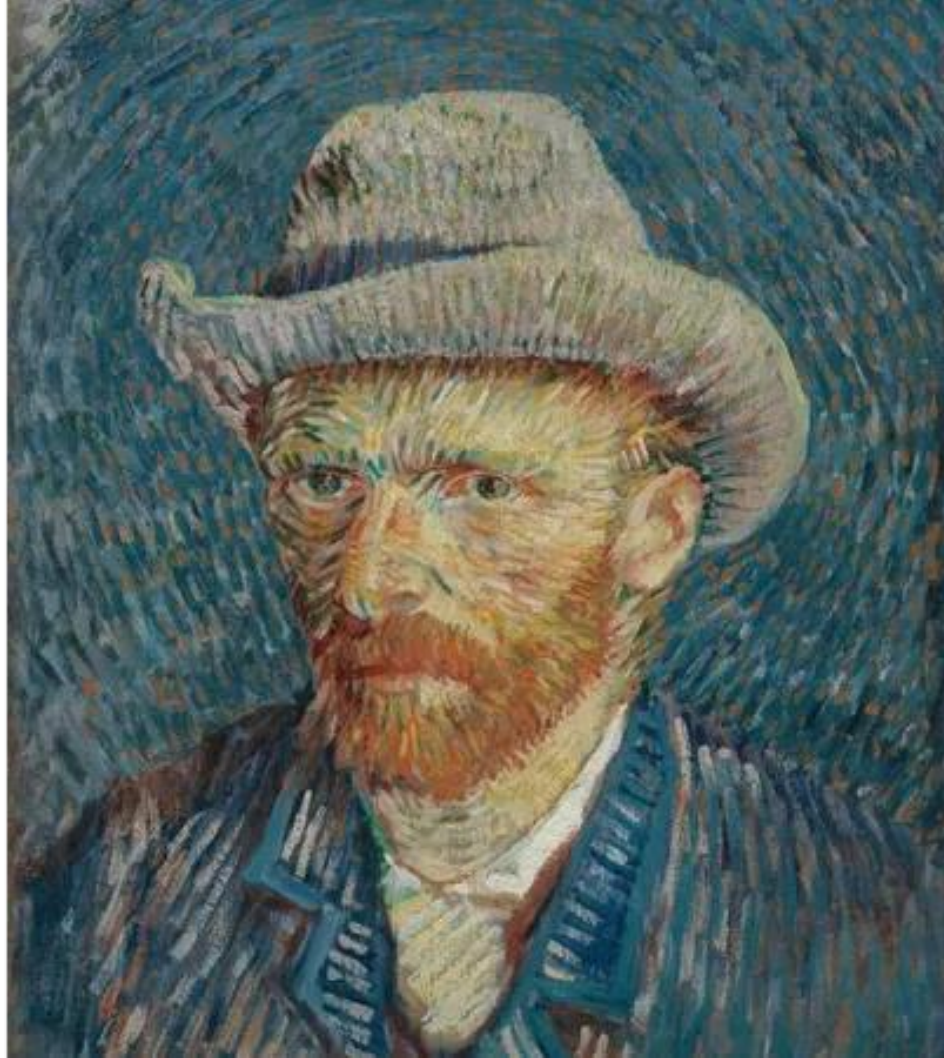
富嶽三十六景 神奈川沖
浪裏

葛飾画



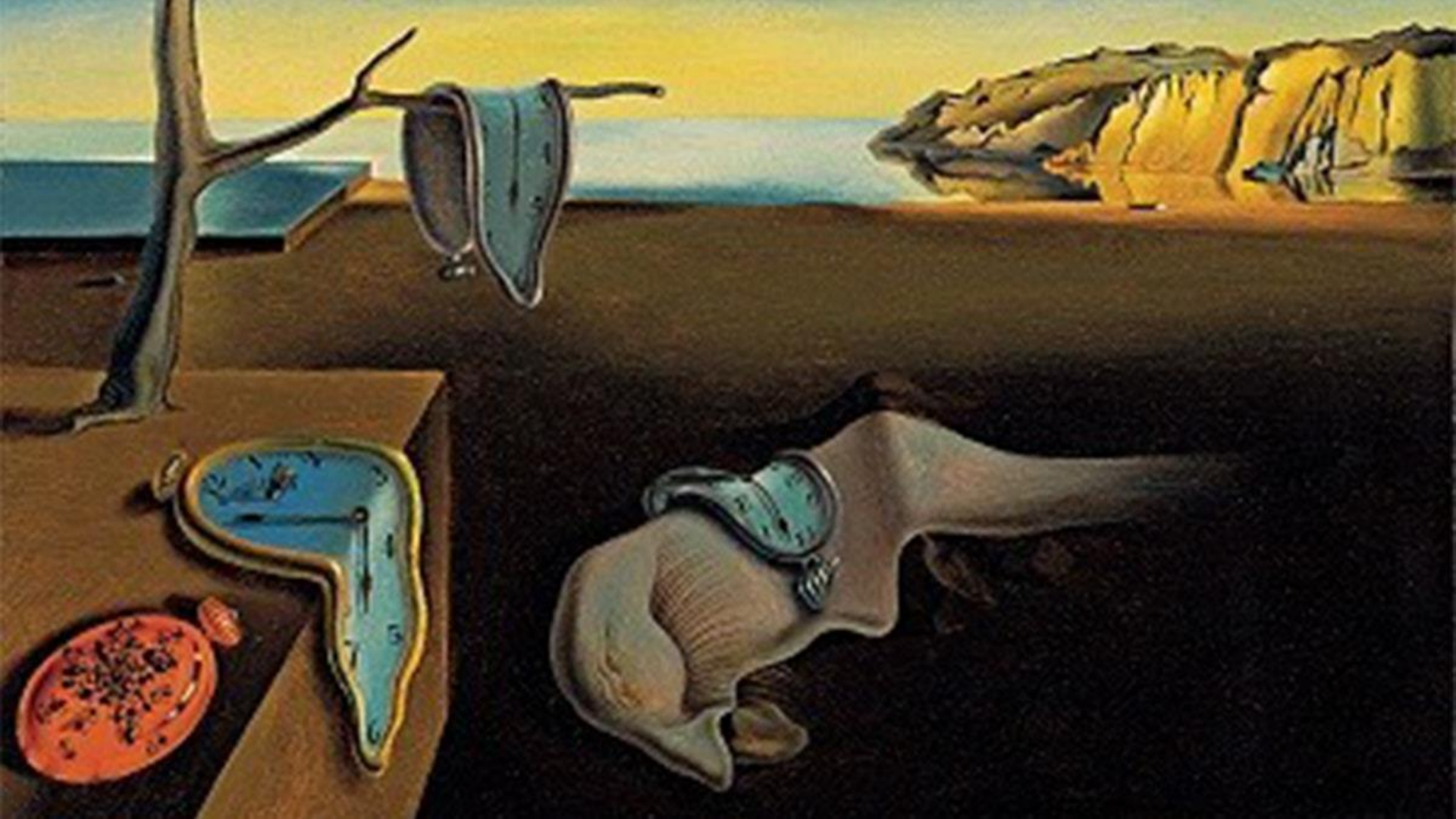














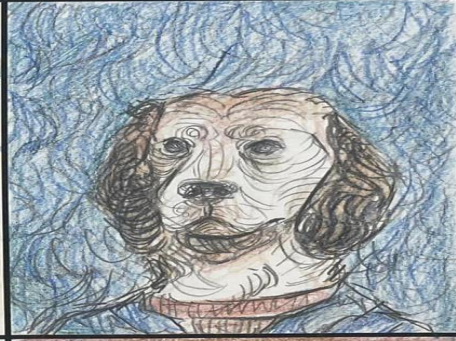
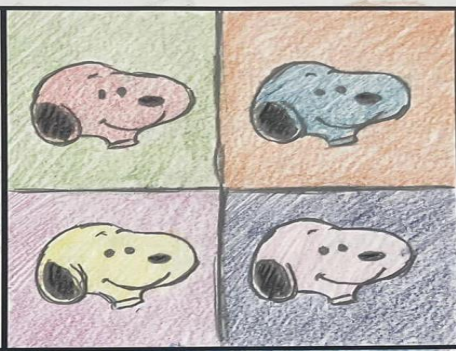


Parody with Cows by teacher Dani Poe



More by Dani Poe





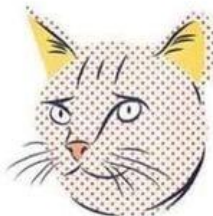
A FIELD GUIDE TO FAMOUS CATS



Andy Cathel



René Macatte



Roy Licatstein



Edat Munch



Vincent Van Cat



Sandrocher Catli



Jackson Catlock

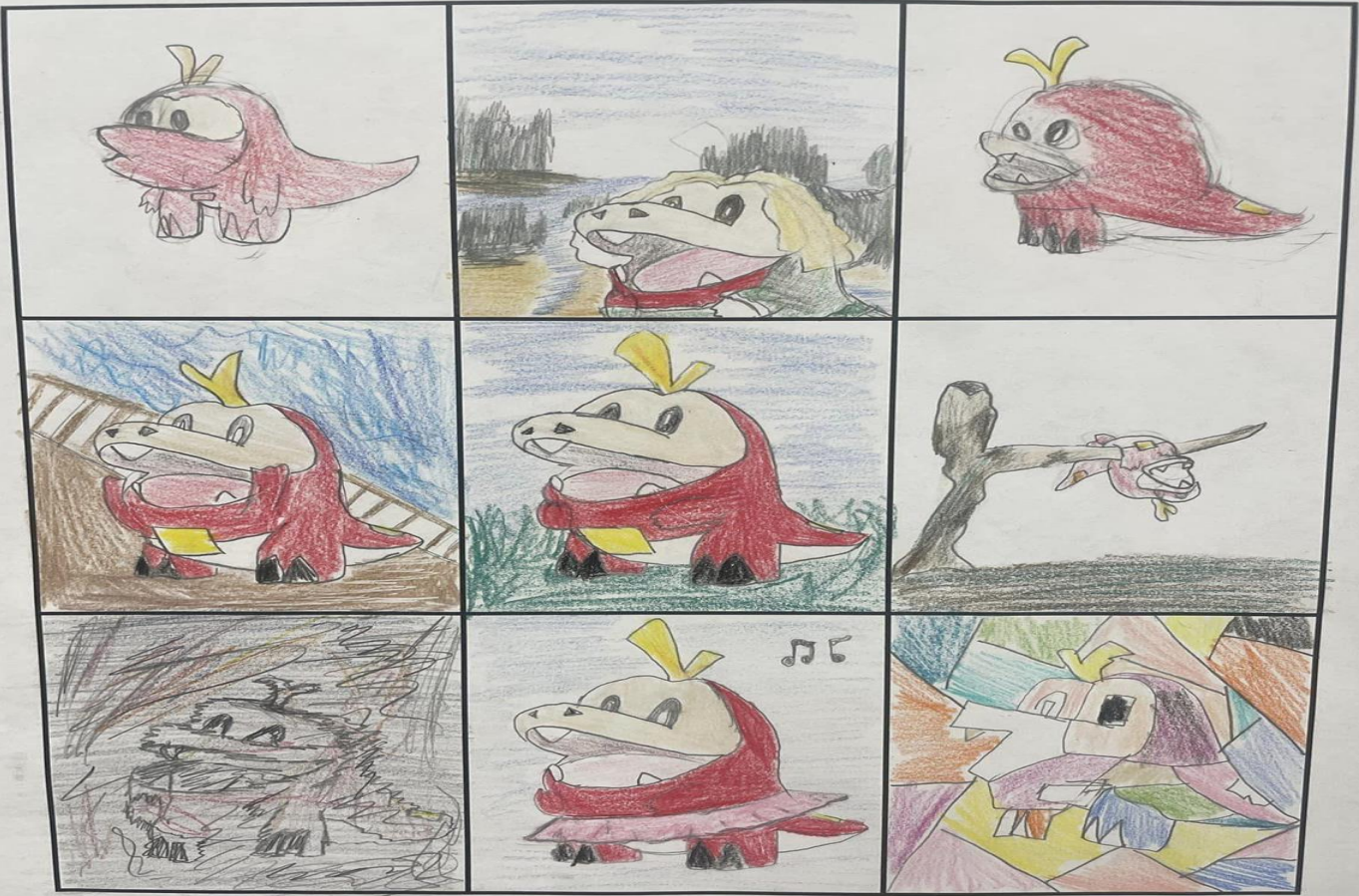


Frida Catlo



Pablo Picatso





RUBRIC 3: Final presentation of your 3 pieces for ANOTHER 100 marks (33.3 x 3)

When you have completed all 3 pieces you will post them on 3 individual slides on your portfolio.

With your original image, you will identify the name of your character, who created it and the year they created it.

With each parody image you will identify the name of the painting you have chosen for your parody, who the original artist is, and the year it was created.