

YOU'RE INVITED TO JOIN THE
Winter Playgroups
Starting 1/8/24 through 4/5/24

MONDAY

JANUARY 8- APRIL 1, 2024
LPS FACILITATORS
LOCATION: POLLARD LIBRARY
10:00 -11:00 AM
LANGUAGE SUPPORTS:
ENGLISH AND KHMER

TUESDAY

JANUARY 9 - APRIL 2, 2024
LPS FACILITATORS
LOCATION: HOUSING AUTHORITY
580 CHELMSFORD ST
10:00 -11:00 AM
LANGUAGE SUPPORTS:
ENGLISH AND KHMER

TUESDAY AND THURSDAYS

JANUARY 9- APRIL 4, 2024
LPS FACILITATORS
LOCATION: YMCA
35 YMCA DRIVE
10:00 -11:00 AM
LANGUAGE SUPPORTS:
ENGLISH AND KHMER

WEDNESDAY

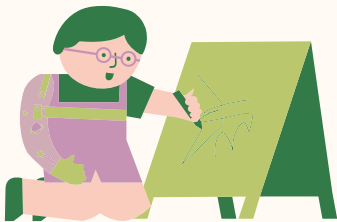
JANUARY 10- APRIL 3, 2024
LPS FACILITATORS
LOCATION: ST. RITA'S CHURCH
158 MAMMOTH ROAD
10:00 -11:00 AM
LANGUAGE SUPPORTS:
ENGLISH AND SPANISH

FRIDAY

JANUARY 12- APRIL 5, 2024
LPS FACILITATORS
LOCATION: ST. RITA'S CHURCH
158 MAMMOTH ROAD
10:00 -11:00 AM
LANGUAGE SUPPORTS:
ENGLISH AND SPANISH

FRIDAY

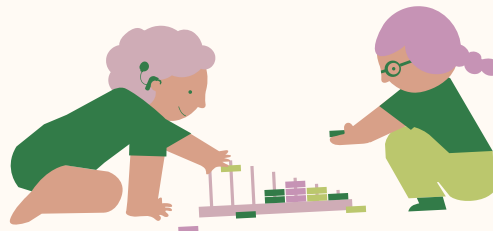
JANUARY 12- APRIL 5, 2024
LPS FACILITATORS
LOCATION: POLLARD LIBRARY
10:00 -11:00 AM
LANGUAGE SUPPORTS:
ENGLISH AND SPANISH



FINE MOTOR AND
LITERACY WHILE
ENGAGING IN
CREATIVE
ACTIVITIES.



Learning to take turns, listen,
and read the emotions of
others.



ESTABLISHING FIRST
FRIENDSHIPS AND
BUILDING SOCIAL
SKILLS.

LEARNING THROUGH INTENTIONAL PLAY

Your child will learn
language through stories
and songs. Children will
have fun, make friends
and grow in their oral
language and social skills.



TO REGISTER SCAN



HERE

LOWELL PUBLIC SCHOOLS
COORDINATED FAMILY AND
COMMUNITY ENGAGEMENT GRANT
IS FUNDED BY

FOR QUESTIONS CALL 978-674-2051 OR VISIT LOWELL PUBLIC
SCHOOLS' EARLY CHILDHOOD WEBSITE
[HTTP://WWW.LOWELL.K12.MA.US](http://www.lowell.k12.ma.us)

