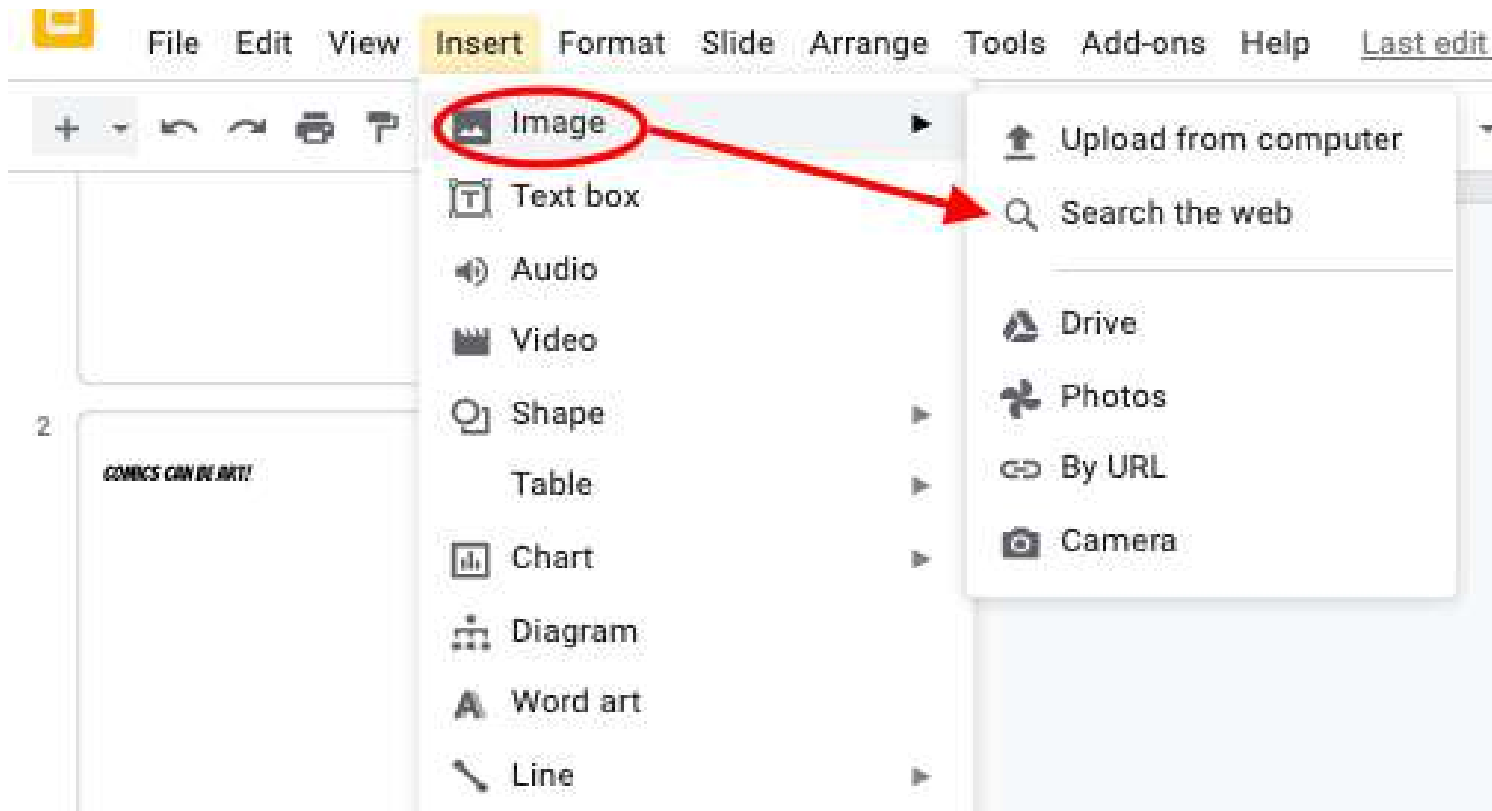


# ***USING GOOGLE TO SEARCH IMAGES***

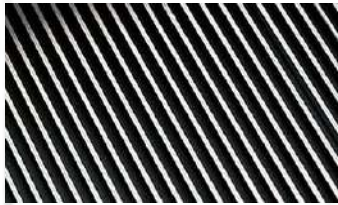
- For scavenger hunt we will use images that we can find on Google
- To search go up to the top of your screen and find Insert, then image, then search the web



# Elements of Art Scavenger Hunt

Find an object around your home that fits with each element. Draw the items.

A Diagonal Line  
(Line)



Triangle  
(Shape)



A curvy line  
(line)



Something Rough  
(Texture)

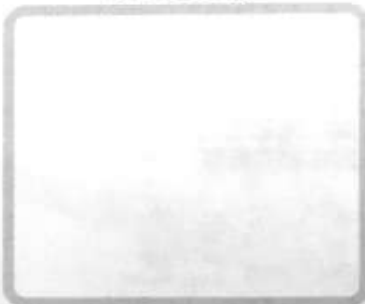


Something Smooth  
(Texture)



A Sphere  
(Form)

Something Orange  
(Color)



Something Woven  
(Texture)



Something That  
Is Black, Grey  
& White  
(Value)

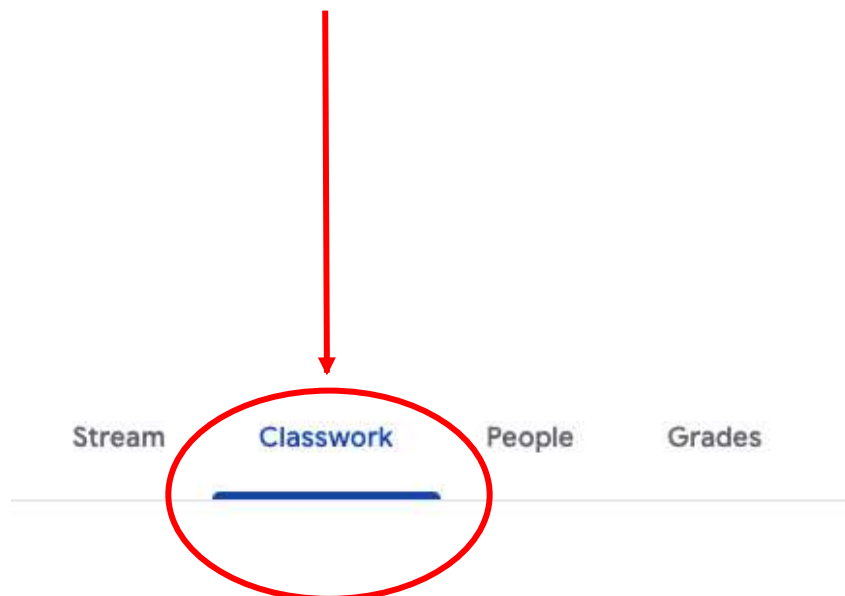




Google Classroom

## ***TURNING IN WORK ON***

Go to the Google Classroom page for art, then click on the CLASSWORK tab.



Click here to turn in  
work!

The screenshot shows a Canvas LMS interface. At the top, there is a navigation bar with a hamburger menu icon, the word 'Art', and a user profile icon with the number '0'. Below the navigation bar, the assignment title 'Comics- In Class Assignment' is displayed with a thumbs-up icon and a date of 'Aug 10'. The assignment is worth '10 points'. A text box contains the instruction 'Do not begin until we are in class! :)'. Below this is a 'Class comments' section with a text input field and a submit button. On the right side, there is a 'Your work' section with a status of 'Assigned'. It shows a 'Google Slides' icon with a close button 'X'. Below this is a '+ Add or create' link and a blue 'Turn in' button, which is circled in red. A red arrow points from the text 'Click here to turn in work!' to the 'Turn in' button. At the bottom, there is a 'Private comments' section with a text input field and a submit button. A help icon (?) is visible in the bottom left corner.

Art

Comics- In Class Assignment 👍

Aug 10

10 points

Do not begin until we are in class! :)

Class comments

Add class comment...

Your work Assigned

Google Slides X

+ Add or create

Turn in

Private comments

Add private comment...