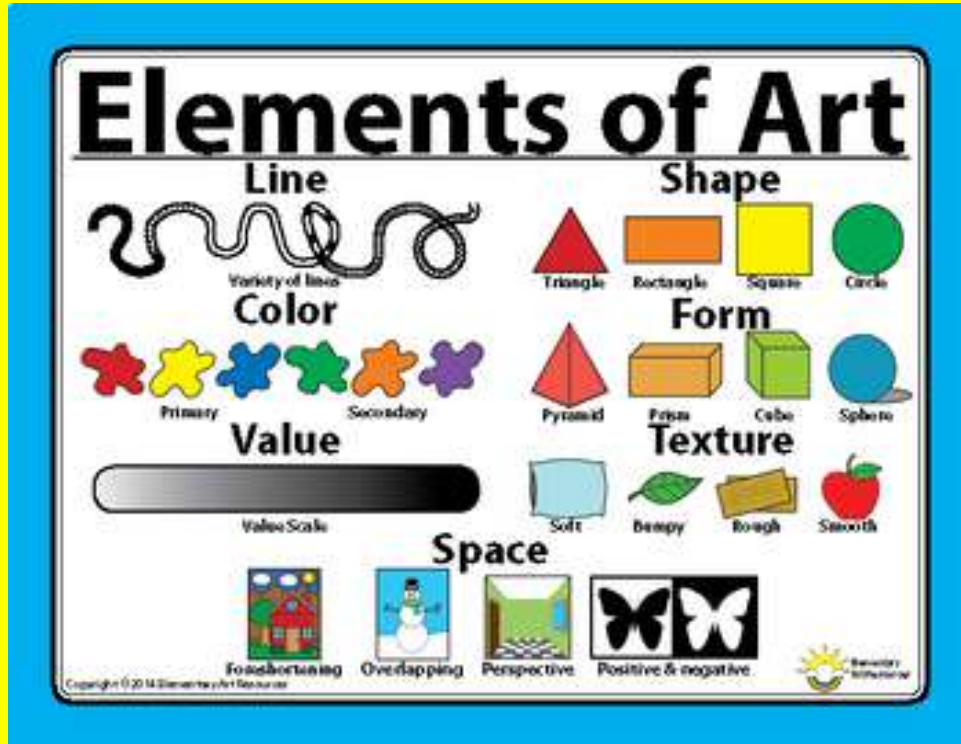


Elements of Art: Option #2

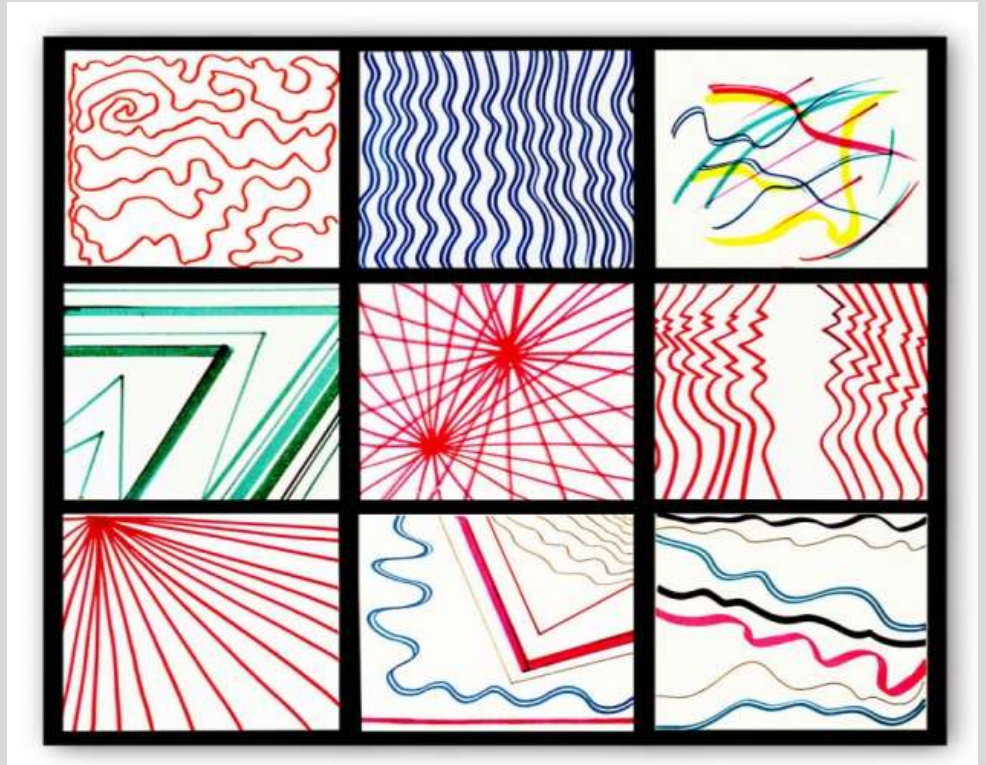


The **Elements of Art** are the “building blocks” of art. The seven basic Elements of Art are used for making art, and understanding/analyzing works of art. The seven Elements of Art are: line, texture, shape, form, color, value, and space.

Submit your answers in Schoology.

Line

A mark that travels from one point to another. Lines can be straight, curvy, zig zag, curly, swirly, etc. The shortest form of a line is a point/dot. Line can be used to guide the viewer's eye through the artwork.

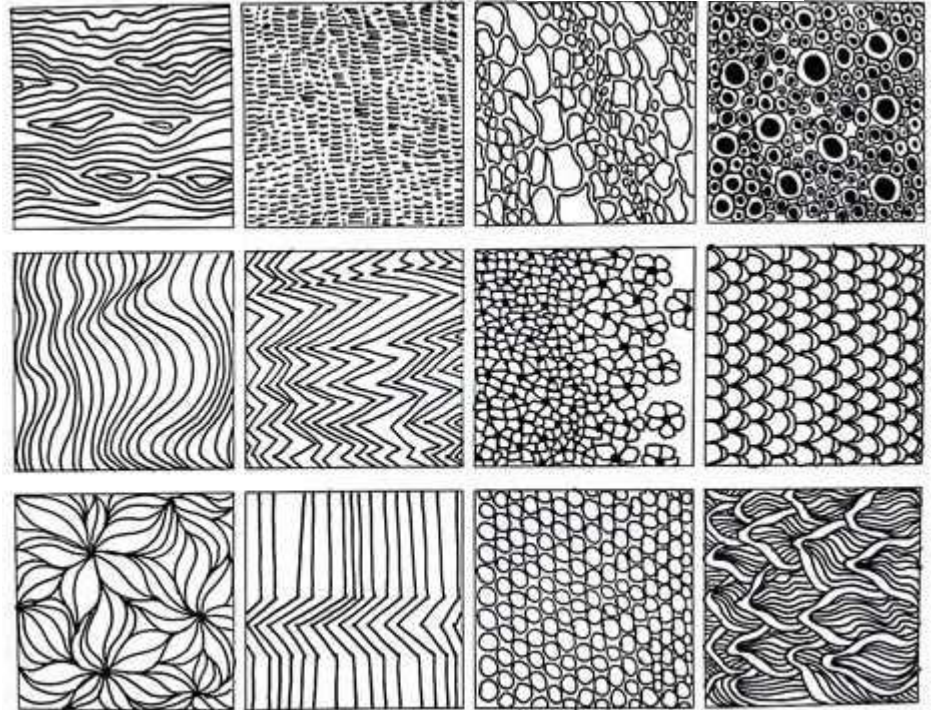


Texture

The way a surface feels, or appears to feel (ie. smooth, rough, fuzzy, bumpy, scaly, slimy, etc.) There are two types of texture: actual and apparent. Actual texture is texture that you can really feel.

Implied/apparent texture is a trick of the eye, created by varying lines on a surface. Artists mostly use apparent texture to make their artwork look realistic.

Would you want to eat a furry apple?



Shape

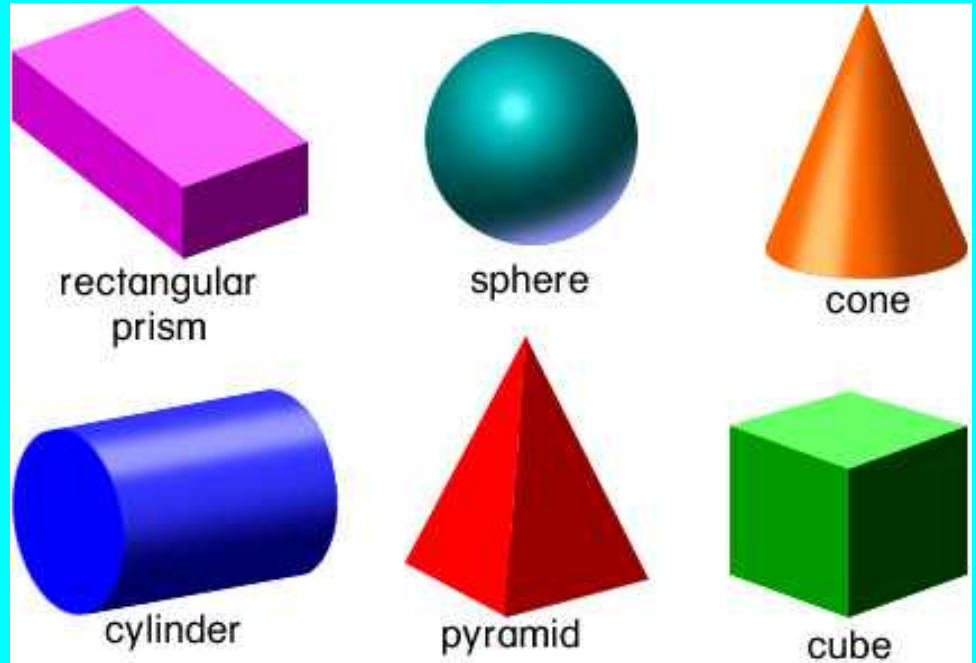
Shape is 2 dimensional (2D). Shape is an area enclosed by a continuous line. There are two types of shapes: geometric and organic/natural.

Geometric shapes are shapes that have specific properties and a name (ie. circle, square, triangle, heart, star, etc.). Organic/Natural shapes are shapes that do not have specific properties or names.



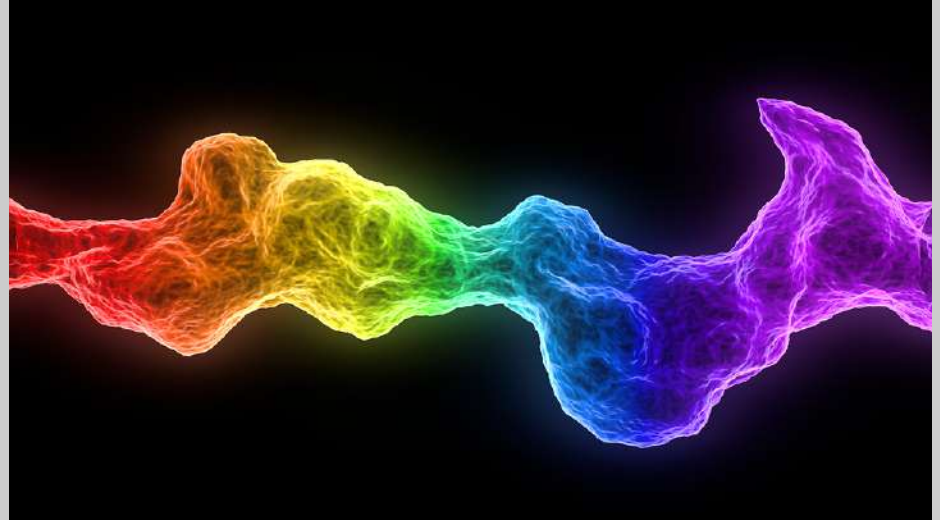
Form

Form is 3 dimensional (3D) shape.
Forms have volume and depth.
Form can be transparent (see through) or opaque (not see through). In art, forms are made by adding lines and/or different values.



Color

Color is how our eyes perceive light waves when they bounce off of a surface. The name of a color is determined by hue, saturation, and brightness. Color can be used to add interest to an artwork and to make certain parts of an artwork stand out.



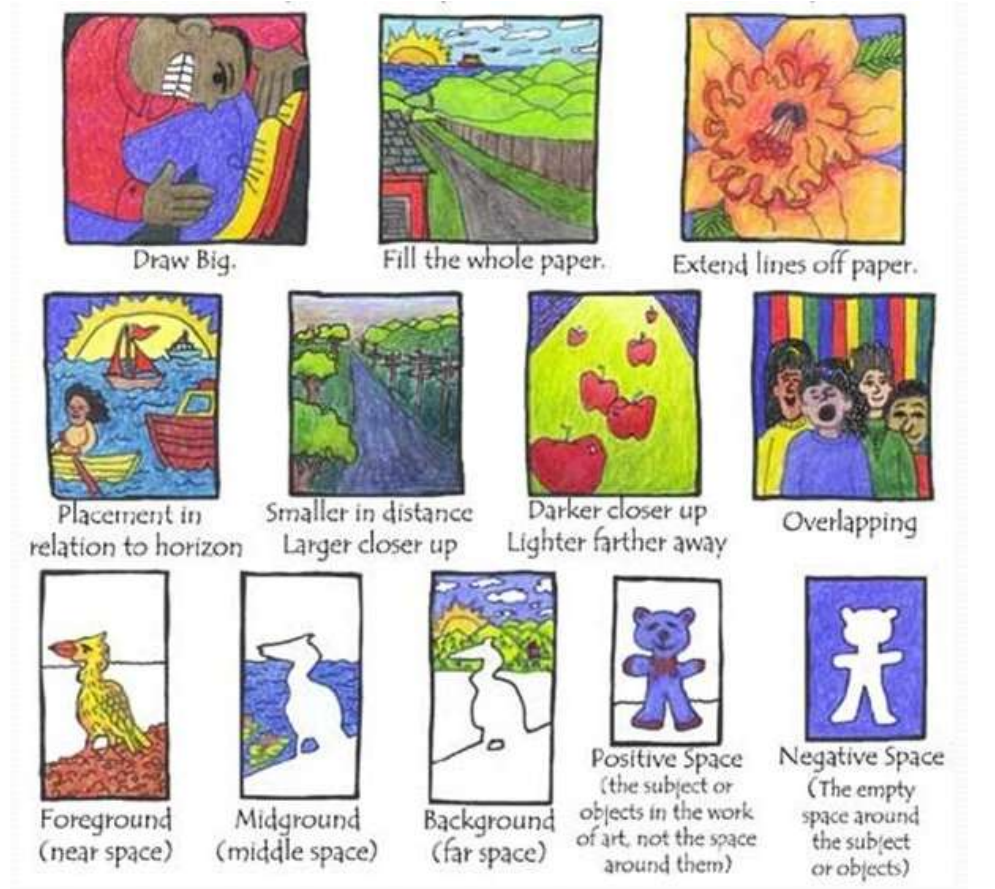
Value

Value is the lightness or darkness of a color. Value helps to make an artwork appear 3 dimensional.



Space

How objects are arranged in an artwork creates a sense of space. All artists start with a space to work in. The space can be fill/crowded or mostly empty. Artists can use perspective, foreground, middle ground, and background to give a space the illusion of depth. Artists can make use of positive and negative space to have a meaningful impact on the viewer. Space is both the simplest and most complex element of art.



Find the 7 Elements of Art:

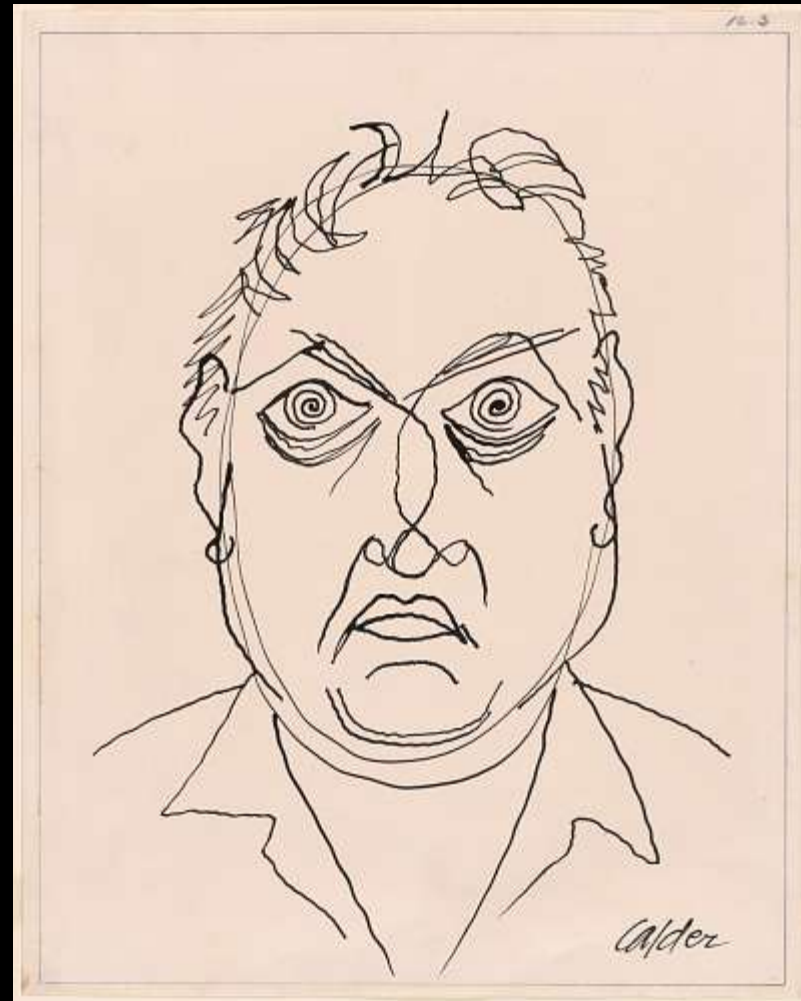
- Each of the following slides will have a famous artist & artwork.
- Each slide will represent **one** of the Elements of Art.
- Each element should only be cited **once**.
- Follow the directions on each slide and submit your answers in Schoology.

Line Texture Shape Form Color Value Space

Alexander Calder, Self Portrait

Which element of art is most evident in this artwork? What did the artist create and how did the artist use that element of art to create the artwork?

Use the sentence stem to provide an answer.
(The artist (name of artist) used (element of art) to
create (what) by (describe how the element was used).)



Henri Matisse, Circus

Which element of art is most evident in this artwork? What did the artist create and how did the artist use that element of art to create the artwork?

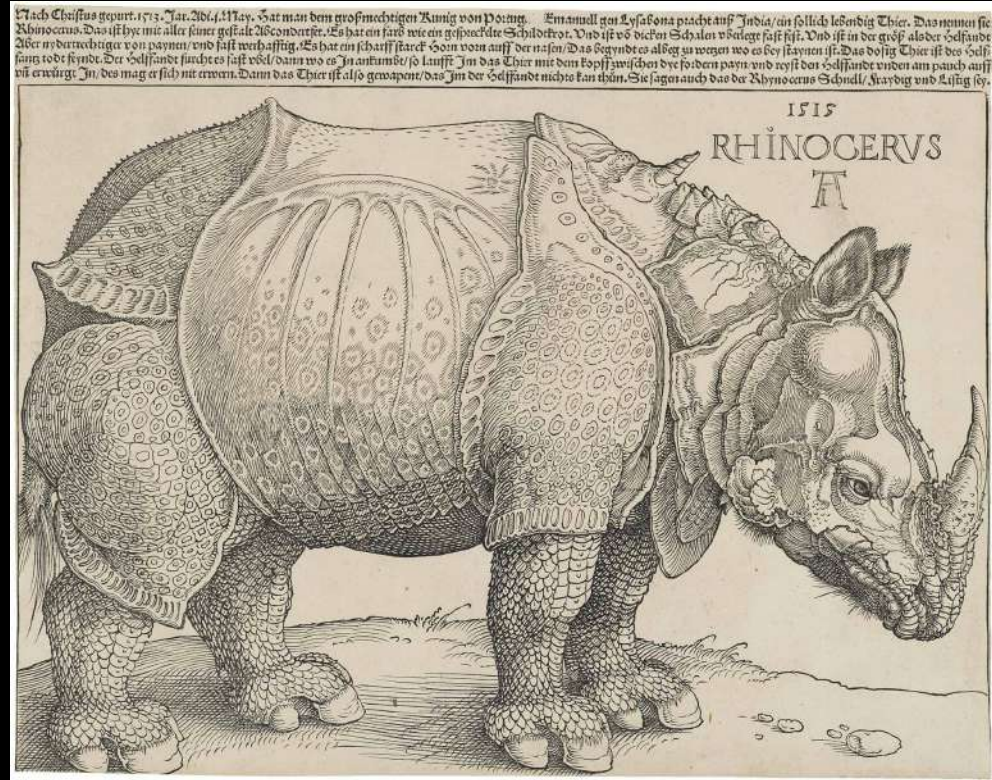
Use the sentence stem to provide an answer. (The artist (name of artist) used (element of art) to create (what) by (describe how the element was used).)



Albrecht Durer, Woodcut Print

Which element of art is most evident in this artwork? What did the artist create and how did the artist use that element of art to create the artwork?

Use the sentence stem to provide an answer. (The artist (name of artist) used (element of art) to create (what) by (describe how the element was used) .)



Rembrandt van Rijn, Self Portrait

Which element of art is most evident in this artwork? What did the artist create and how did the artist use that element of art to create the artwork?

Use the sentence stem to provide an answer.
(The artist (name of artist) used (element of art) to
create (what) by (describe how the element was used) .)



Wassily Kandinsky, Color Studies

Which element of art is most evident in this artwork? What did the artist create and how did the artist use that element of art to create the artwork?

Use the sentence stem to provide an answer. (The artist (name of artist) used (element of art) to create (what) by (describe how the element was used).)



Edward Hopper, Gas

Which element of art is most evident in this artwork? What did the artist create and how did the artist use that element of art to create the artwork?

Use the sentence stem to provide an answer. (The artist (name of artist) used (element of art) to create (what) by (describe how the element was used) .)

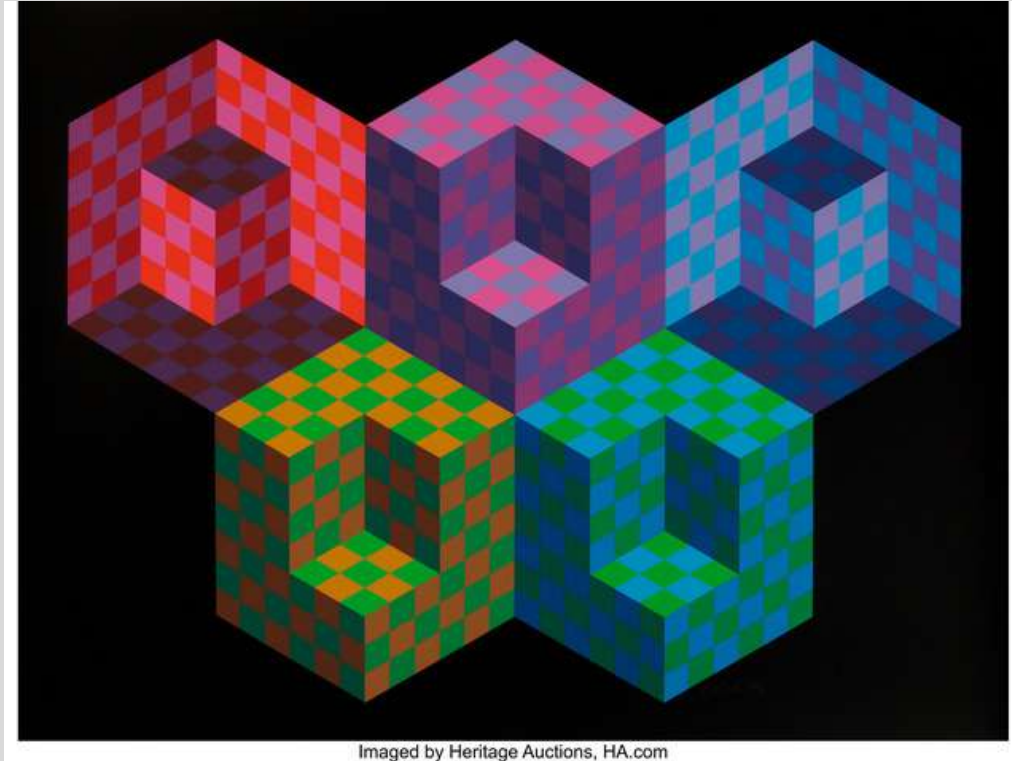


Victor Vasarely, Hexa

5

Which element of art is most evident in this artwork? What did the artist create and how did the artist use that element of art to create the artwork?

Use the sentence stem to provide an answer. (The artist (name of artist) used (element of art) to create (what) by (describe how the element was used) .)



Imaged by Heritage Auctions, HA.com