

# The **ELEMENTS** and **PRINCIPLES** of ART



*Created by Mrs. Jarvis-Garay*

*Parkdale High School*

*6001 Goodluck rd.*

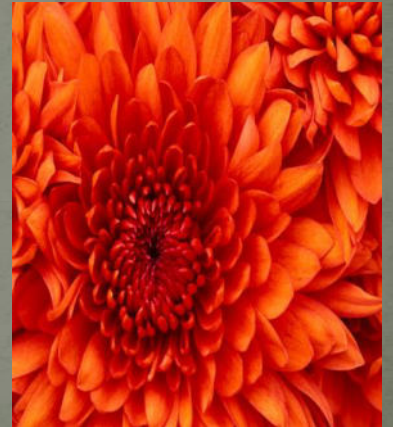
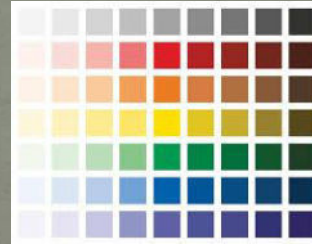
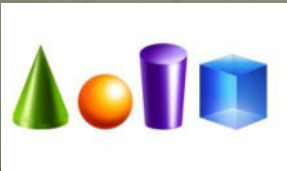
*Riverdale, MD*



# UNIT OBJECTIVES ...

- Students will **identify the Elements of art** to further understand how a work of art is constructed
- *Students will **demonstrate knowledge** of each element through unique visual representations*
- Students will **identify the Principles of art** to understand how the elements are used within a work of art
- *Students will **demonstrate knowledge** of each principle through unique visual representations*

Now, Let's take a closer look into the Elements!



The **ELEMENTS** ARE THE TOOLS YOU USE TO  
construct an artwork; *the properties of an artwork.*

- Line
- Shape
- Form
- Textur
- Color
- Valu
- Space

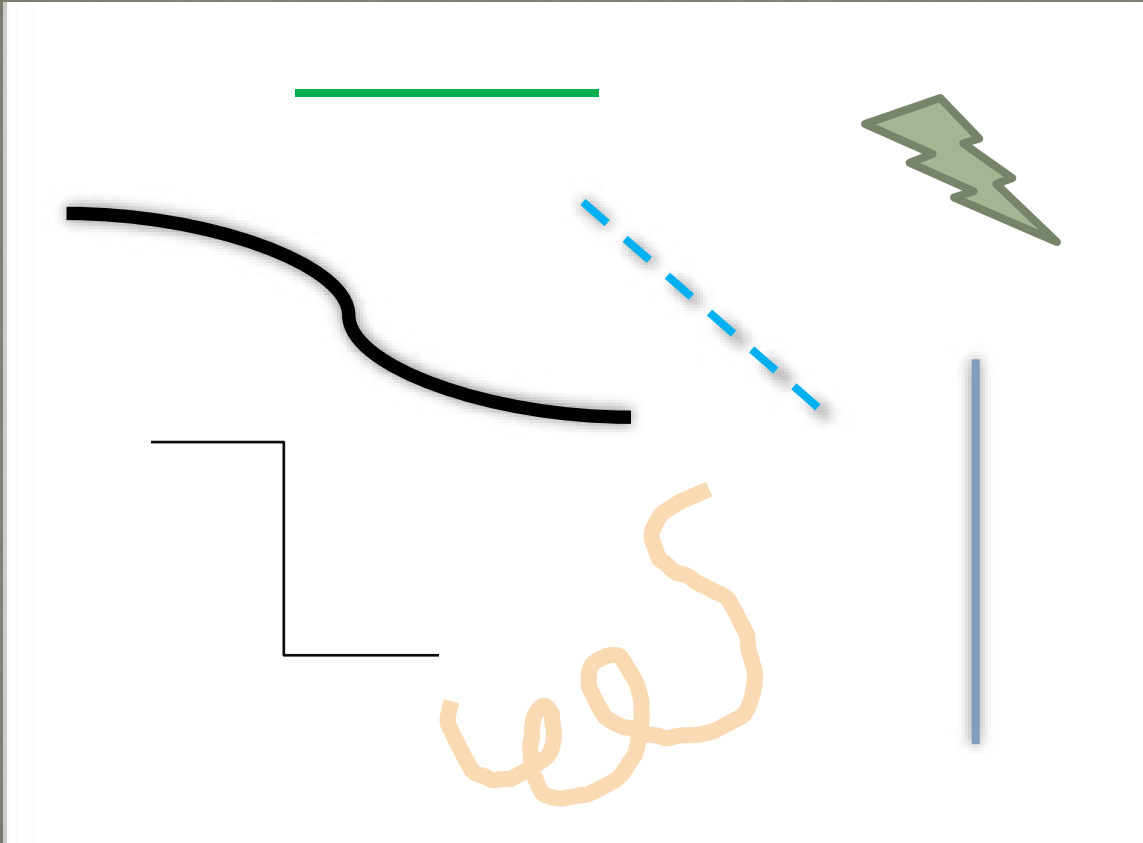


# Line

A mark made by  
a moving point  
Line can be:

Short - Long  
Thick - Skinny  
Curvy - Straight  
Broken - Solid

Line can go:  
Vertical,  
Horizontal  
or Diagonal



# SHAPE

An enclosed line  
(2-dimensional)

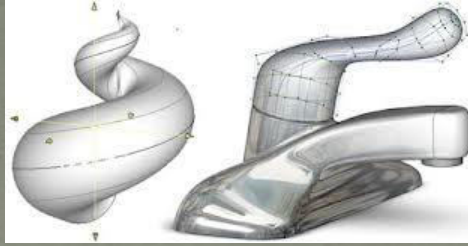
There are two  
categories:

Geometric – angular,  
symmetrical

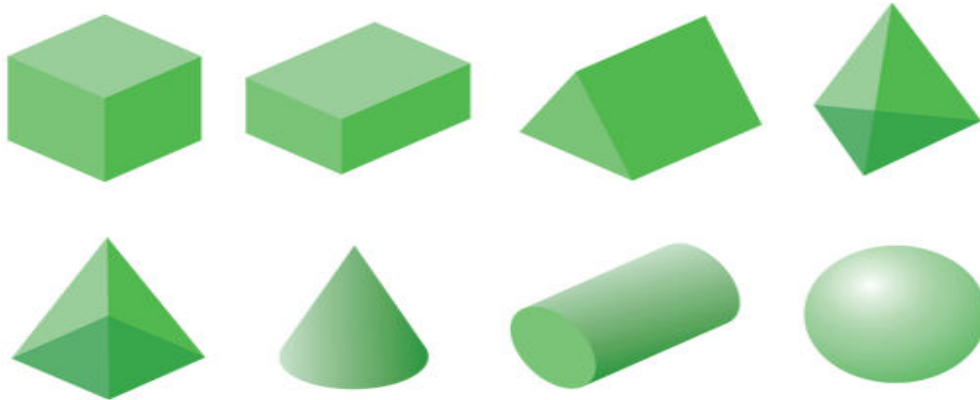
Organic – curved  
or natural.



# Form



**3 - dimensional  
shape** (*length,  
width and height*)  
Can be geometric or  
organic



**Some popular  
forms are:**

Cylinder

Cone

Pyramid

Cube

Sphere

Triangular  
Prism



# Texture

Surface quality

May be:

Rough – Smooth

Wet – Dry

Hard – Soft

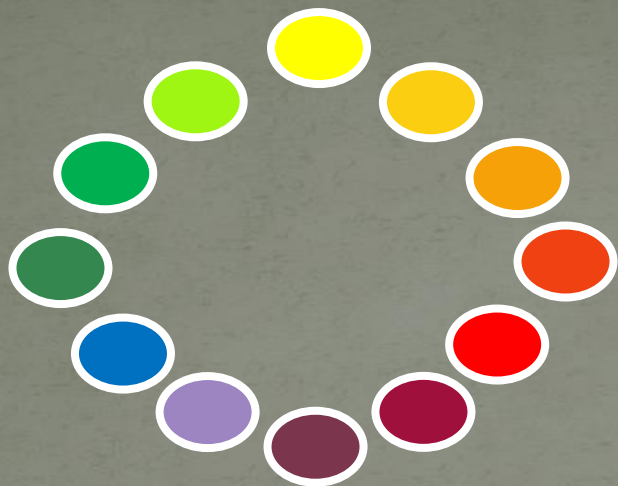
Sticky – Slick

Sandy – Rocky

Silky - Coarse

Liquid - Solid





# Color

Light, as interpreted by the human eye.

3 Primary:

Red, Yellow, Blue

3 Secondary:

Orange, Green, Violet

6 Tertiary:

Yellow-green, Yellow-orange, Red-violet, Red-orange, Blue-green, Blue-violet



Warm colors: contain more red

Cool colors: contain more blue

Yellow and Violet: Neutral

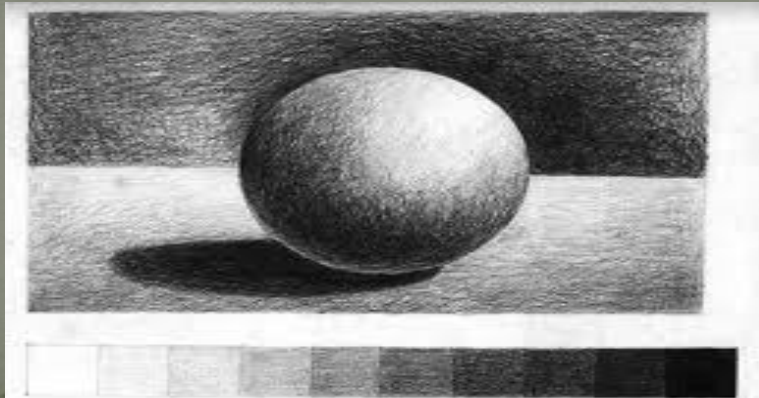
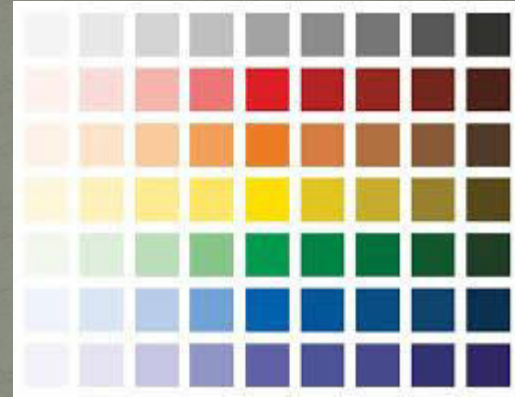
Similar colors:  
Neighbors on  
the color wheel





# Value

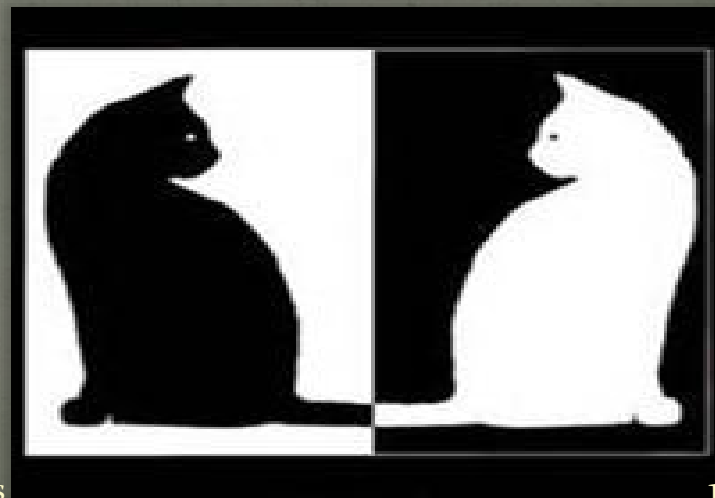
The darkness or lightness of a color



For each color there is a spectrum and range of variation of darkness and lightness.

# Space

The area occupied by an object (*positive*); The area around, within and between an object (*negative*)

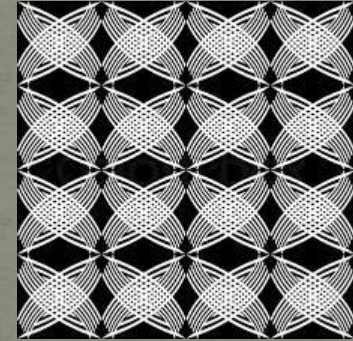
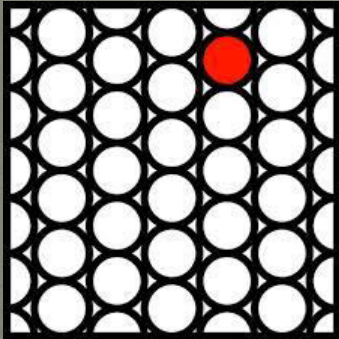


The elements of

Art



Now, Let's take a closer look at the Principles!



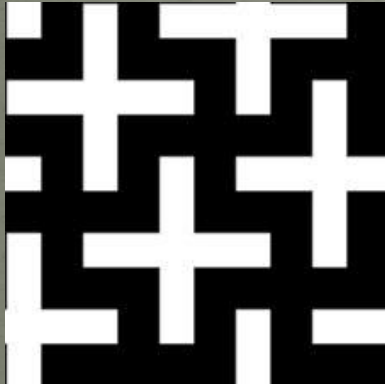
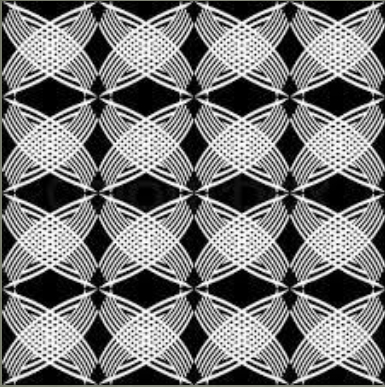
The **Principles** show how the *Elements* of art work together to create:

- Patter
- Rhythm/Movement
- Emphasis
- Harmony/Unity
- Balance
- Proportion
- Variet
- Contrast



# Pattern

Shows repetition with colors, lines or shapes throughout an artwork .



# Rhythm/ Movement

Shows actions or a path the viewer's eye follows throughout an artwork; caused by using the elements to give the feeling of motion.

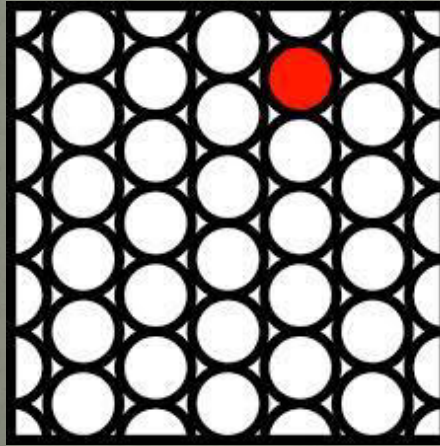






# Emphasis

Occurs when an element within a work of art is dominant or draws your attention. This is usually done by changing the color or size of something.





# Harmony/ Unity

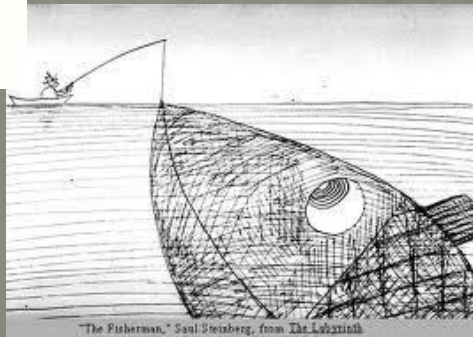
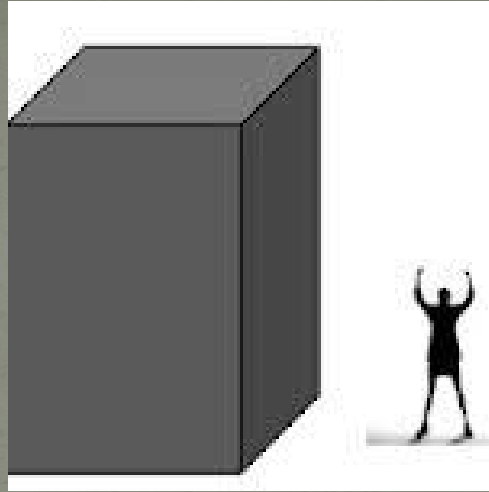
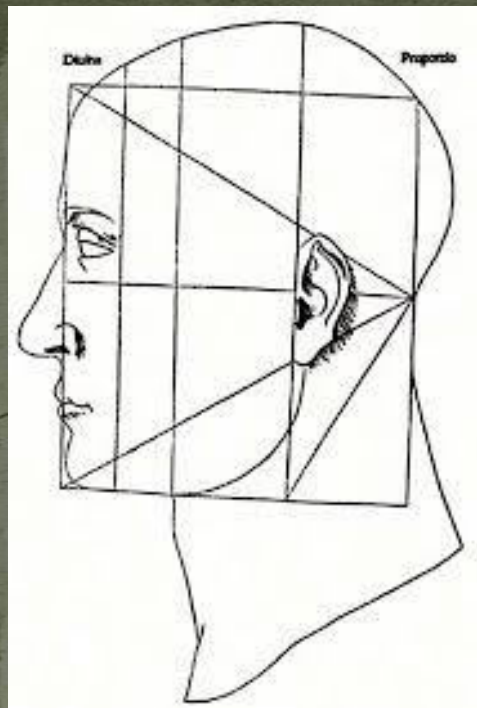
Achieved by  
using similar  
elements  
throughout the  
artwork; gives a  
cohesive and  
unified look.





# Balance

Arrangement of the elements so that no one part of a work overpowers, or seems heavier than any other part.



# Proportion

Describes the size, location or comparison of one element to another (or to the whole) in a work.

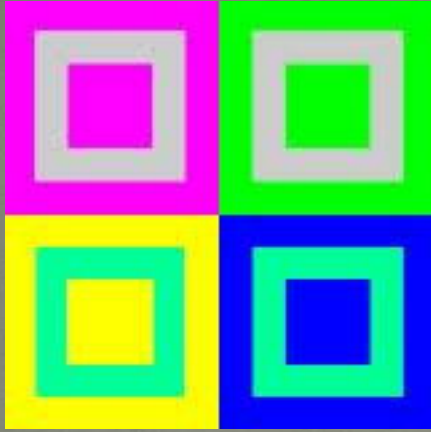




# Variety

The quality or state of arranging different elements of art in a single work of art.





# Contrast

Created by  
using elements  
that conflict  
with one  
another



# How can you create artwork with these?

## **The Elements**

---

Line  
Shape  
Form  
Texture  
Color  
Value  
Space

## **The Principles**

---

Pattern  
Rhythm/Movement  
Emphasis  
Harmony/Unity  
Balance  
Proportion  
Variety  
Contrast





# THANKS FOR WATCHING!!!

---

*(Applause)*

