



Arrhythmias
LET'S PLAY A GAME!!

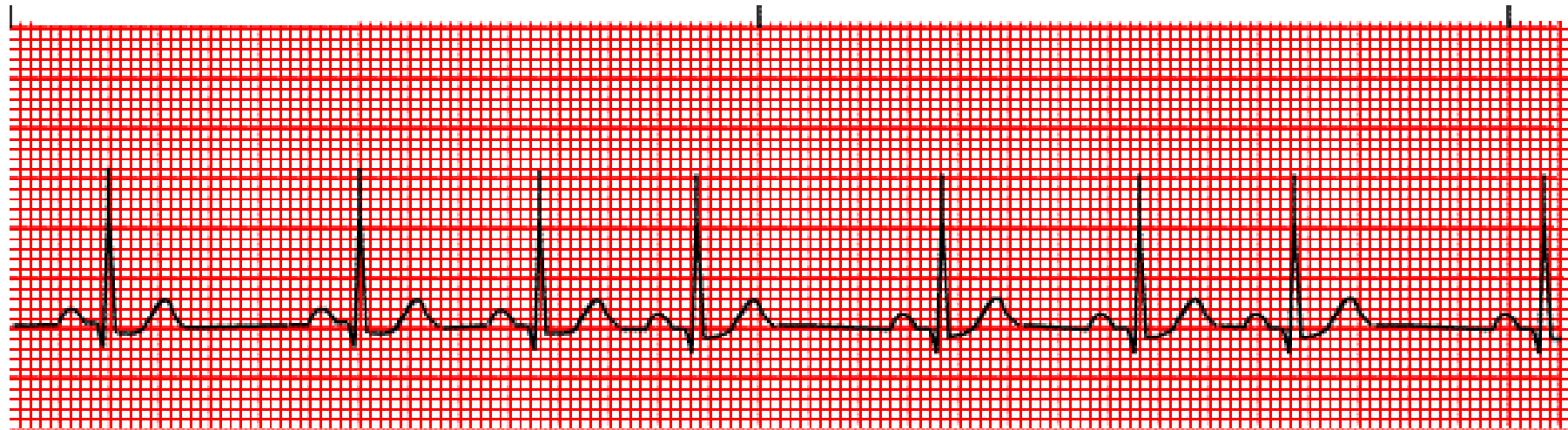
Lead II



25mm/sec 10mm/mV

© Jason Winter 2016 - @ ECG Educator

Sinus Rhythm

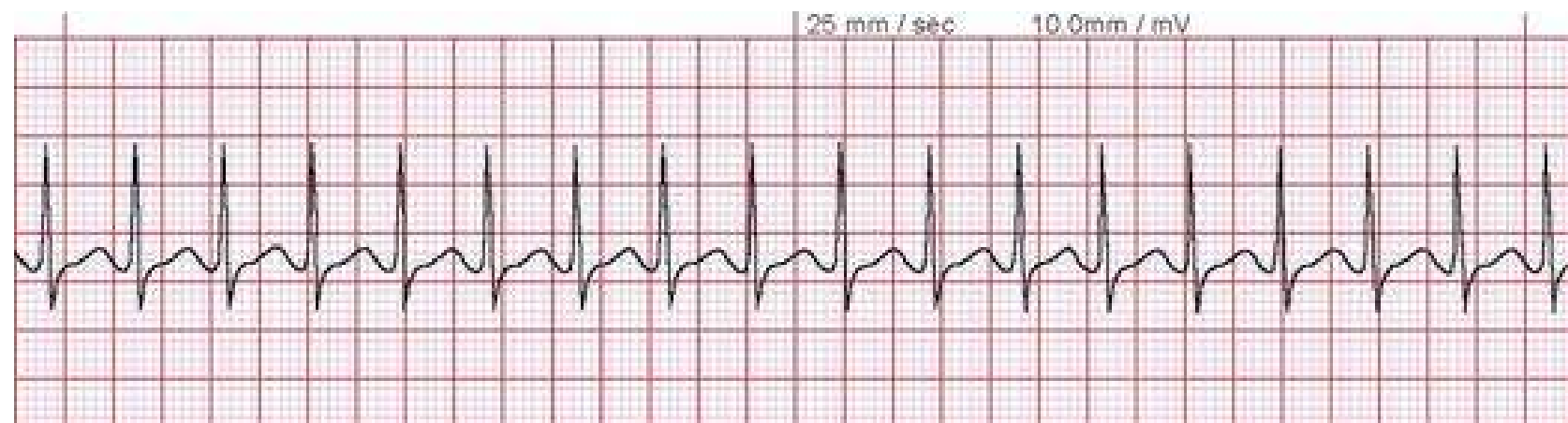


WWW.RNCEUS.COM

Sinus Arrhythmia



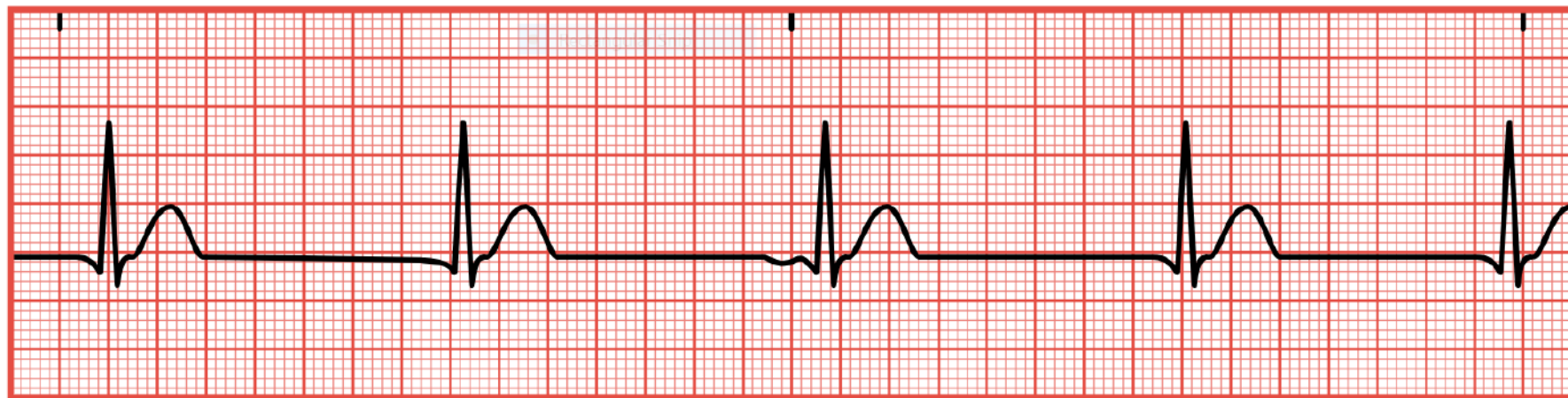
Sinus Rhythm with a
premature junctional complex
(PJC)



Supra-ventricular tachycardia (SVT)

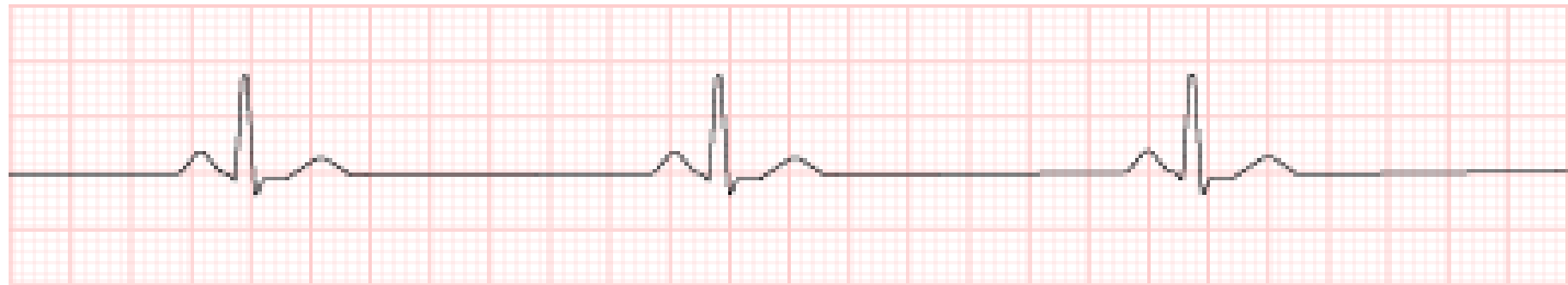


Atrial Fibrillation



Junctional Escape rhythm

Inverted or absent P waves; HR is between 40-60 bpm

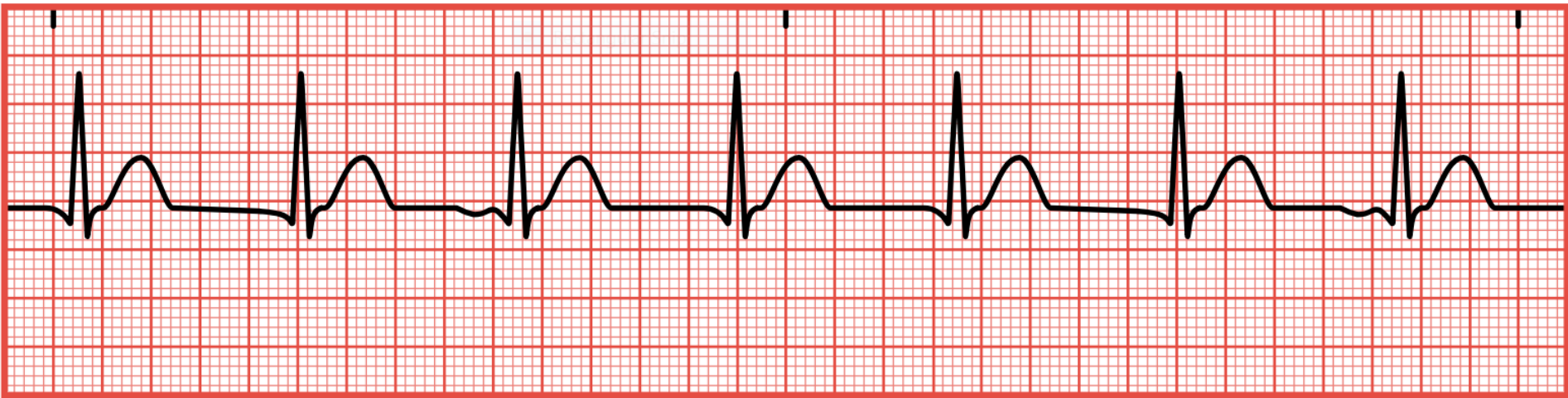


Sinus Bradycardia



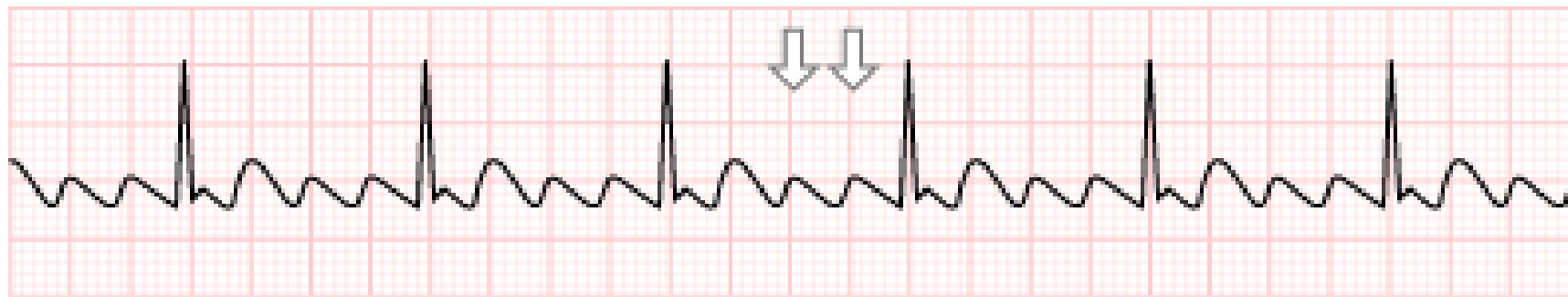
Sinus Rhythm with a sinus Arrest

this arrest is only approximately 1.4 seconds (remember that to be considered significant, it must be at least 6 seconds/30 large boxes)



Accelerated Junctional Rhythm

No P waves or inverted; 60-100 bpm; pt. Will likely not experience signs/symptoms



Atrial Flutter

Saw tooth

Lead II



25mm/sec 10mm/mV

© Jason Winter 2016 - @ ECG Educator

Sinus Tachycardia

Anything over 100 bpm

Lead II

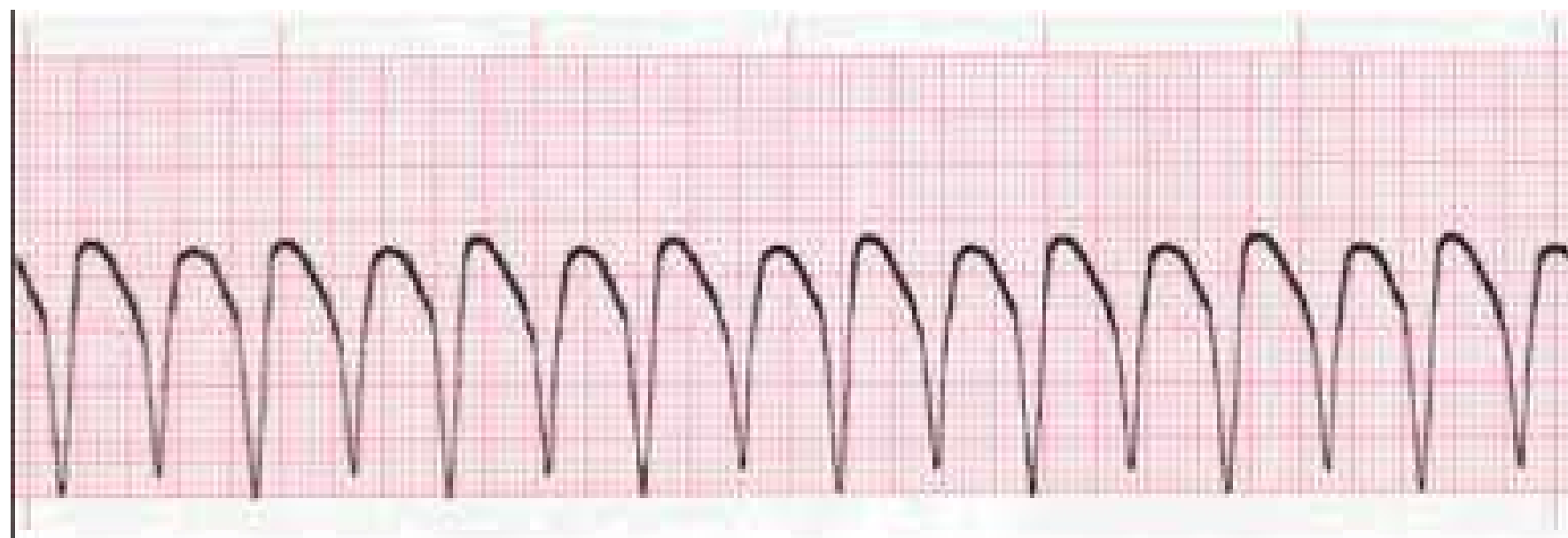


25mm/sec 10mm/mV

© Jason Winter 2016 - @ ECG Educator

Junctional Tachycardia

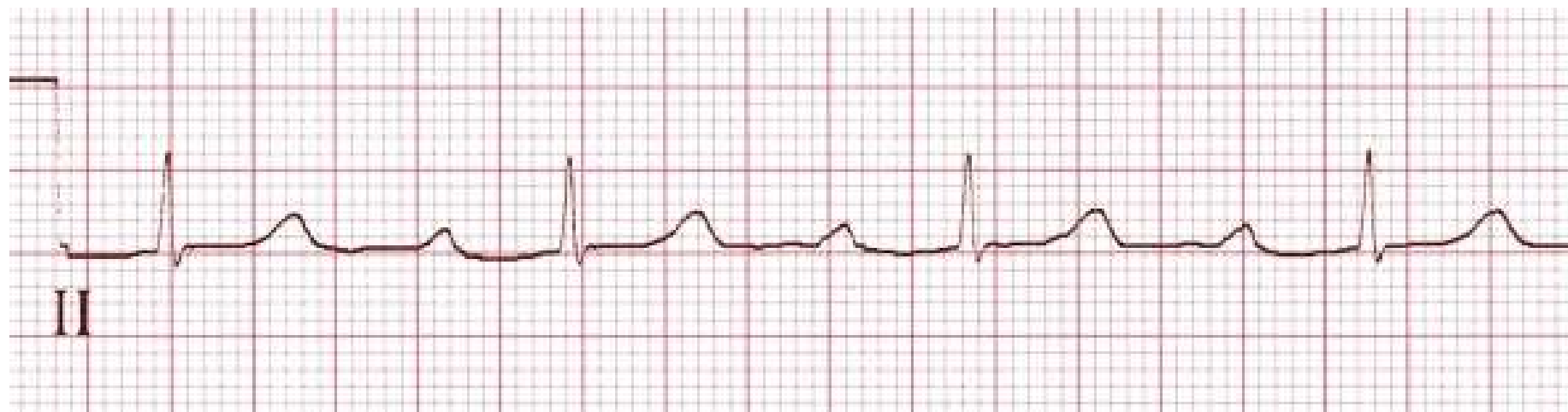
No P waves or inverted; greater than 100-150 bpm; pt. may experience symptoms of palpitations or fluttering



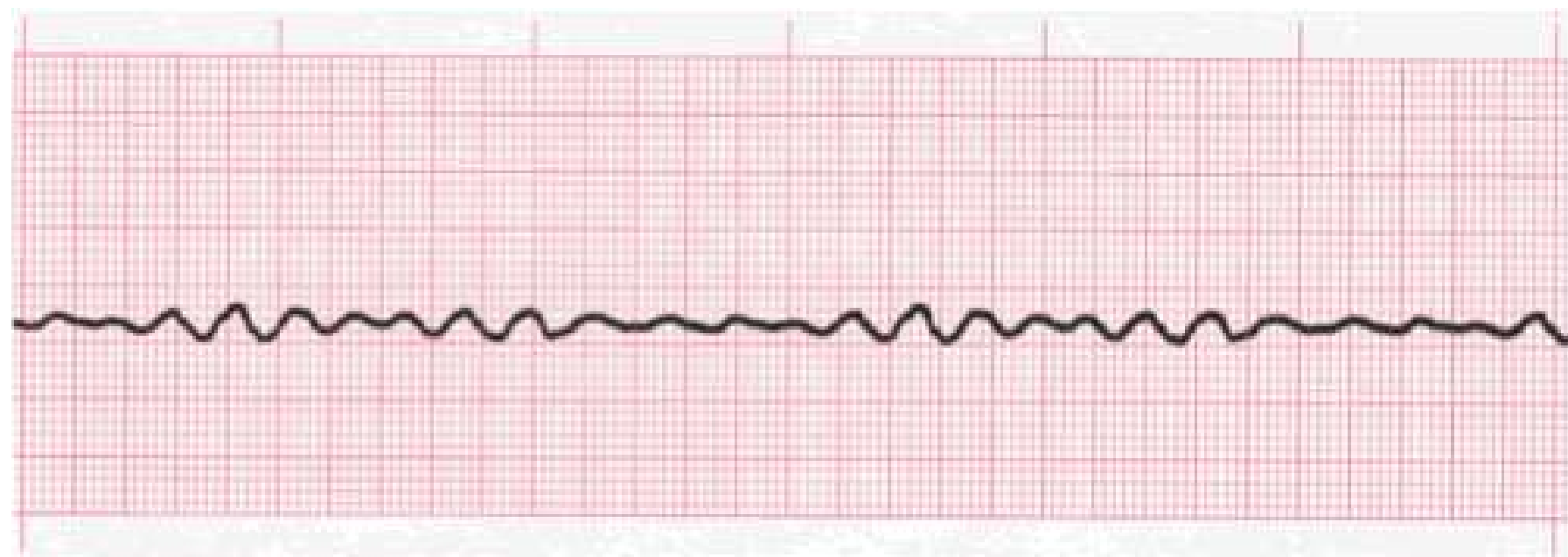
V-tach



Wenkebach



1st degree



V-fib



Mobitz II



IVR



Atrial Pacing

