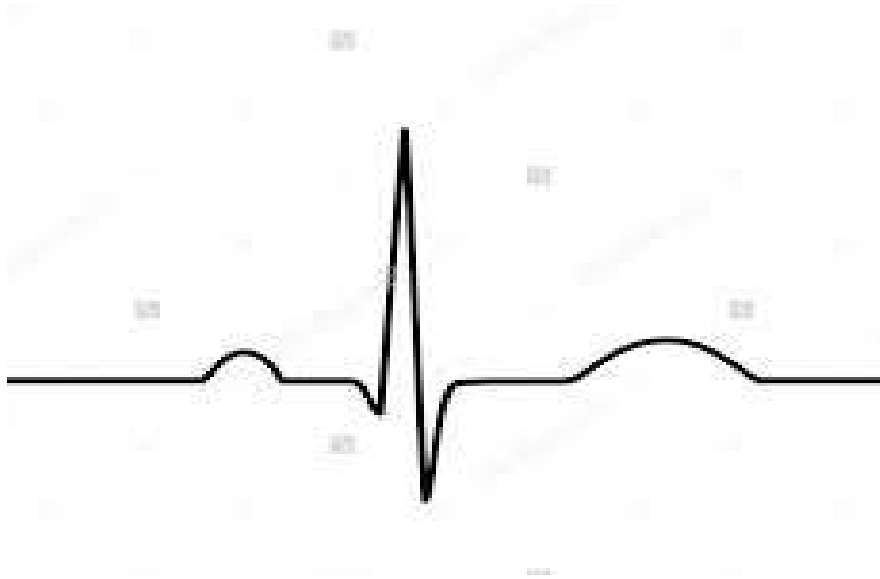


Name: _____

1. A. Label the waveform: P, Q, R, S, T, PR interval, PR segment, QRS complex, J point, ST interval, ST interval; What does each area represent? (11 points):



Include colors AND labels for #'s 2-5

2. Stress test



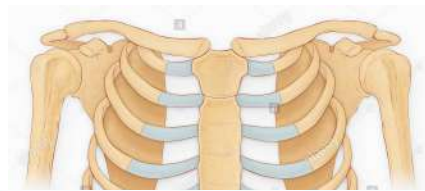
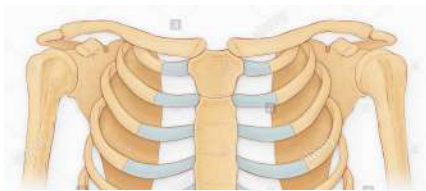
3. 5 lead Holter/ambulatory monitor



4. 5 lead telemetry monitor

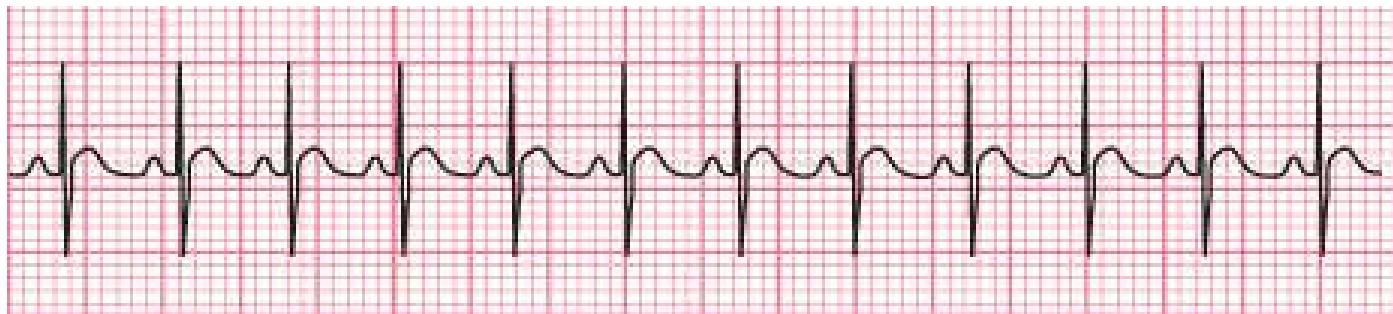
5. 3 lead Holter/ambulatory monitor

Name: _____

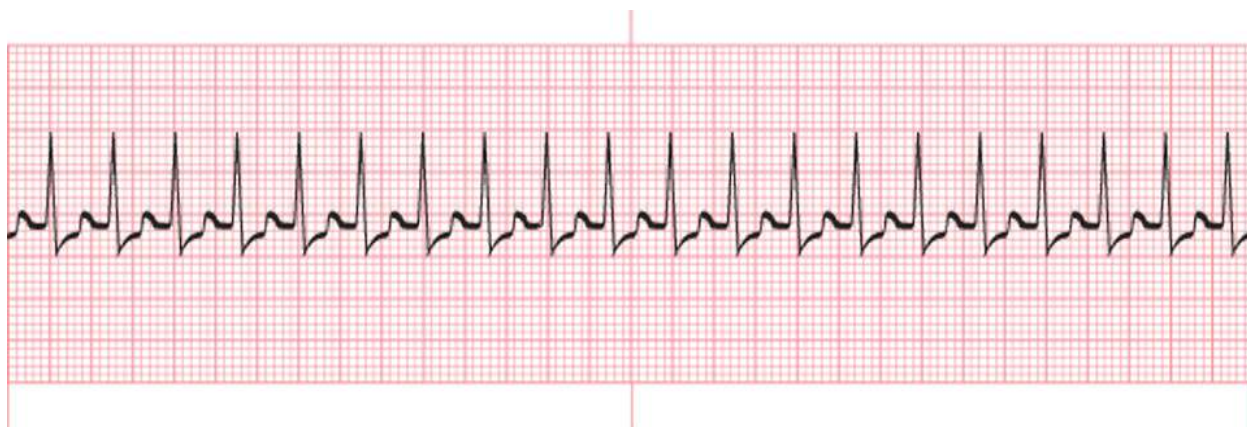


6. How many small boxes in a P-P interval: _____

Atrial Rate for the above strip using 1500 method: _____



7. How many small boxes in the R-R interval: _____ Ventricular Rate for the above strip using the 1500 method: _____ Ventricular Rate using 6 second method: _____



8. Ventricular Rate for the above strip using 1500 method: _____

Name: _____

Ventricular rate using the 6 second method: _____

9. Define the placement for the precordial leads(6 points):

V1:

V2:

V3:

V4:

V5:

V6:

10. What are 2 social history questions to ask when interviewing a patient:

11. What are 2 medical history questions to ask a patient?

12. How many electrodes are placed on the body for a 12 lead EKG?

13. What is the normal distance in seconds of the PR interval? What does the PR interval measure? (2 points):

14. Does the P wave represent depolarization OR repolarization? Is the atria or ventricle involved? Is this chamber contracting or relaxing?

15. State 1 cause for each type of artifact listed below:

Wandering baseline:

Interrupted baseline:

Somatic tremor:

16. When calculating rate using the 300 method, what is the 6 step pattern? List the numbers in order.

17. What does the QRS complex measure/represent?

18. When a patient wears a holter monitor, they should not exercise. True/False

Name: _____

19. What are standard paper speed AND amplitude (include units of measure):

- a. b.

20. A patient is not allowed to smoke the night before a stress test. True/False

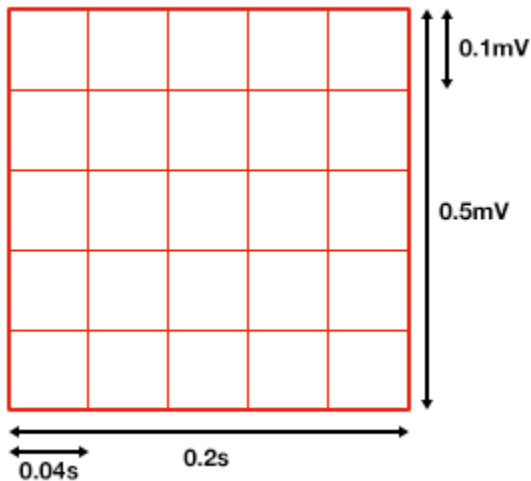
21. What is the exact location the black electrode should be placed for a 5 lead holter/ambulatory monitor?

- a. Left lower abdominal area
- b. 1st rib left side of the sternum
- c. 5th ICS, left anterior axillary line
- d. 3rd rib right side of the sternum

22. What is the exact location of the red electrode on a 3 lead holter/ambulatory monitor?

- a. Left lower abdominal area
- b. Apex of the heart
- c. 3rd rib right of the sternum
- d. Under left pectoral muscle
- e. B and D
- f. None of the above

23. Label the boxes below in size (if using a ruler), time, and amplitude:



BONUS

-Which coronary artery is known as the widowmaker (2 point)?

-Draw Einthoven's triangle (5 points)

-List the order of blood flow through the heart naming all vessels, chambers, and valves(3 points)

Name: _____