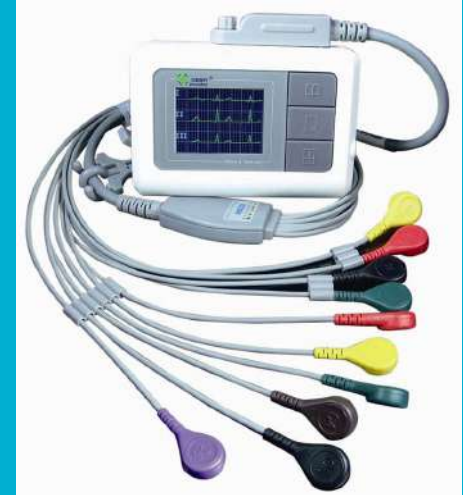


# EKG Machine Setup

---

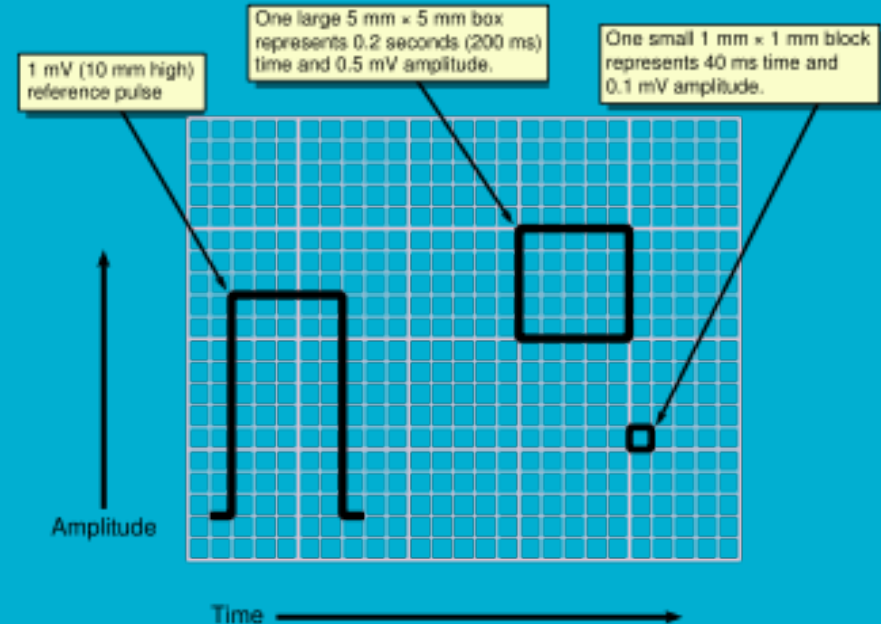
Sunnyvale HST

# Types of EKG Machines

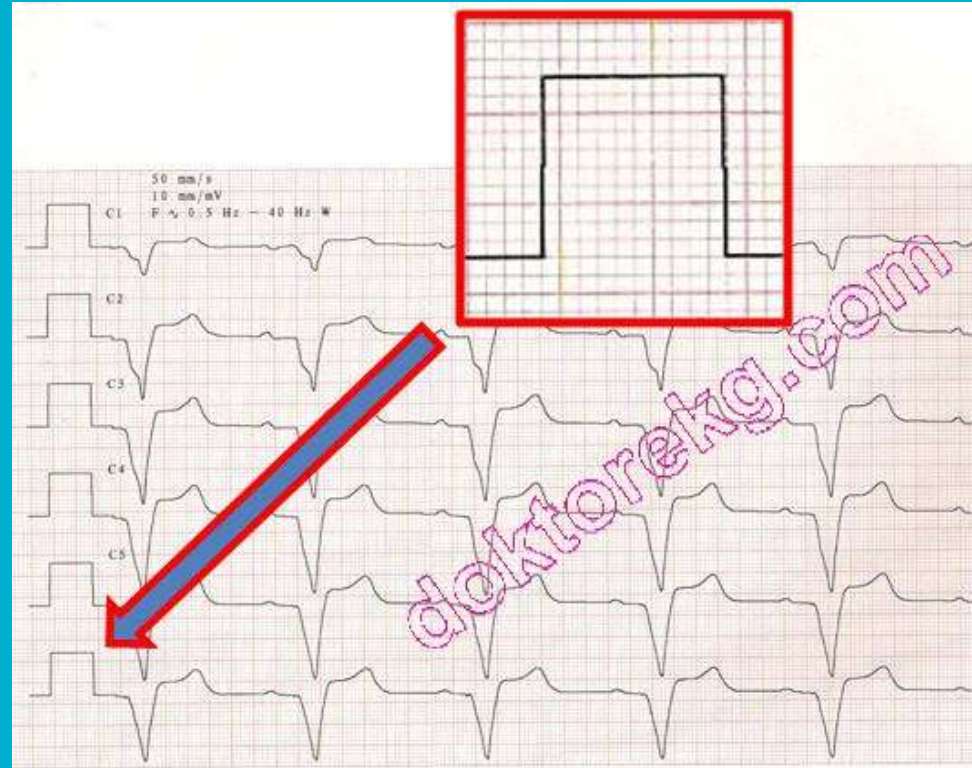
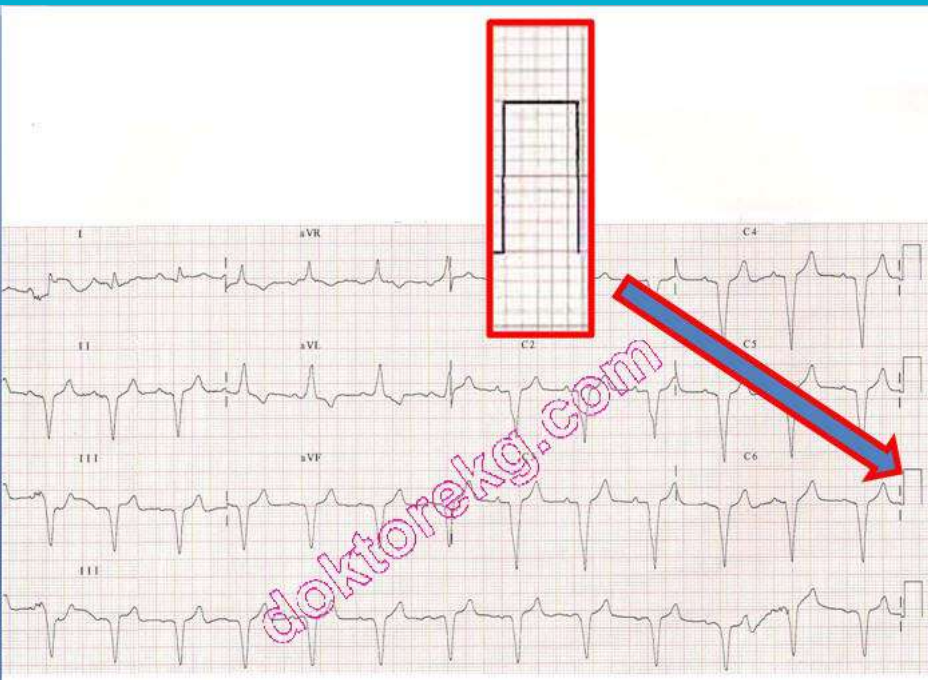


# Paper Speed

- How quickly the tracing paper is fed through the EKG machine
- Typically 25mm/second or 50mm/second (for fast HR)
- Faster speed: spaces out waves, used when heart rate is fast
- Slower speed: waves are tighter together, may be used when HR is slower
- MUST verify the paper speed every time--should be located at the top of the EKG printout as calibration block



# Paper Speed Example



# Gain

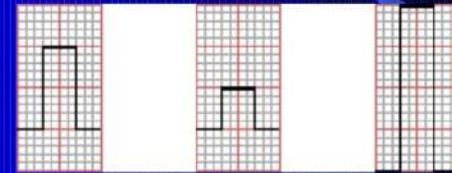
Relates to the amplitude of the waves

Represented by the height of the calibration box

Also noted as 1x, 2x, 3x at the top of the EKG tracing



## STANDARDISATION ECG amplitude scale



Normal amplitude  
10 mm/mV

Half amplitude  
5 mm/mV

Double amplitude  
20 mm/mV

# EKG Equipment Maintenance

---

Perform daily user test according to user manual

Clean the machine, keypad, wires, and other components as recommended by the manufacturer

Properly connect device to a grounded power source

Know how to change the paper/change paper when it is low

Maintain a clean work environment (reduces potential for errors)



# When the EKG is finished...

---

- Check the printout for artifact on all leads
- Check the printout printed each lead
- If certain leads did not print:
  - Verify that leads did not fall off/come loose from patient
  - Ensure secure connections between leads, electrodes and EKG machine
  - Ensure wires are plugged in to machine
  - Try changing the cables on the machine
  - If problem persists, call the manufacturer of the EKG device

# Uploading/Mounting EKGs

---

- Uploading EKG (attaching an EKG reading electronically to patient record)
  - Make sure patient identifiers are entered and are correct
  - Follow your institution's policy
  - Ensure HIPAA regulations are met
- Mounting EKG (physically attaching an EKG reading to a patient record)
  - Ensure patient identifiers are entered and are correct
  - Ensure stickers/bar codes are correct before attaching
  - Follow your institution's policy
  - Ensure HIPAA regulations are met