



ENDERLIN AREA SCHOOL FALL 2020 REOPENING PLAN

HEALTH & SAFETY SMART RESTART PLAN

Enderlin Area School Board Approved
August 11, 2020

Enderlin Area School Families

It has been a challenge for our entire community since March, but we hope you have found ways to cope and embrace this new normal. Thank you to the students, staff, parents, and community members who have helped us succeed in these difficult times.

Our challenge now is deciding how to best offer a quality education to our students for the 2020-2021 school year. As we all know, the response to COVID-19 has been a very fluid situation and is expected to remain fluid in the foreseeable future. This plan is prepared as a guide with the purpose of addressing the continuation of instruction in the various at-risk phases presented by the Governor's office.

Our task force committee has focused on developing a plan to allow for a return to face-to-face instruction. The most important discussions have centered around the health and safety of our students and staff due to the continued emphasis on this highly contagious virus. We have addressed two primary objectives: to continue to offer an outstanding education to our students, while doing our part to minimize the possibility of the virus spreading in our community.

We understand that this plan will not address every question you may have. The worldwide seriousness of this virus has brought about a wide spectrum of emotions and opinions throughout all communities.

Thank you for your time reviewing this plan. Please understand this plan is subject to change with the fluidity of the COVID-19 situation. We encourage everyone to ask questions and communicate their concerns as we move forward. Together, our school can provide quality education to our children in a safe manner if we work together to solve problems.

Respectfully

Philip French
Superintendent

Paul Billing
School Board President

ASSUMPTIONS & ASSURANCES

Enderlin Area School believes:

- Every student should have the opportunity to engage in learning, regardless of the spread of COVID-19 in our community.
- Schools have a vital role in providing safe environments for students, focusing on both social-emotional and physical health.
- By working together with educators, staff, health care professionals, parents, students, and community members we can solve most challenges.
- Our district will make decisions based on the most current guidance from local, state, and national health care officials.
- Our School Board will ensure our plan meets the needs of our students, educators, staff, and community.

Our Planning Team

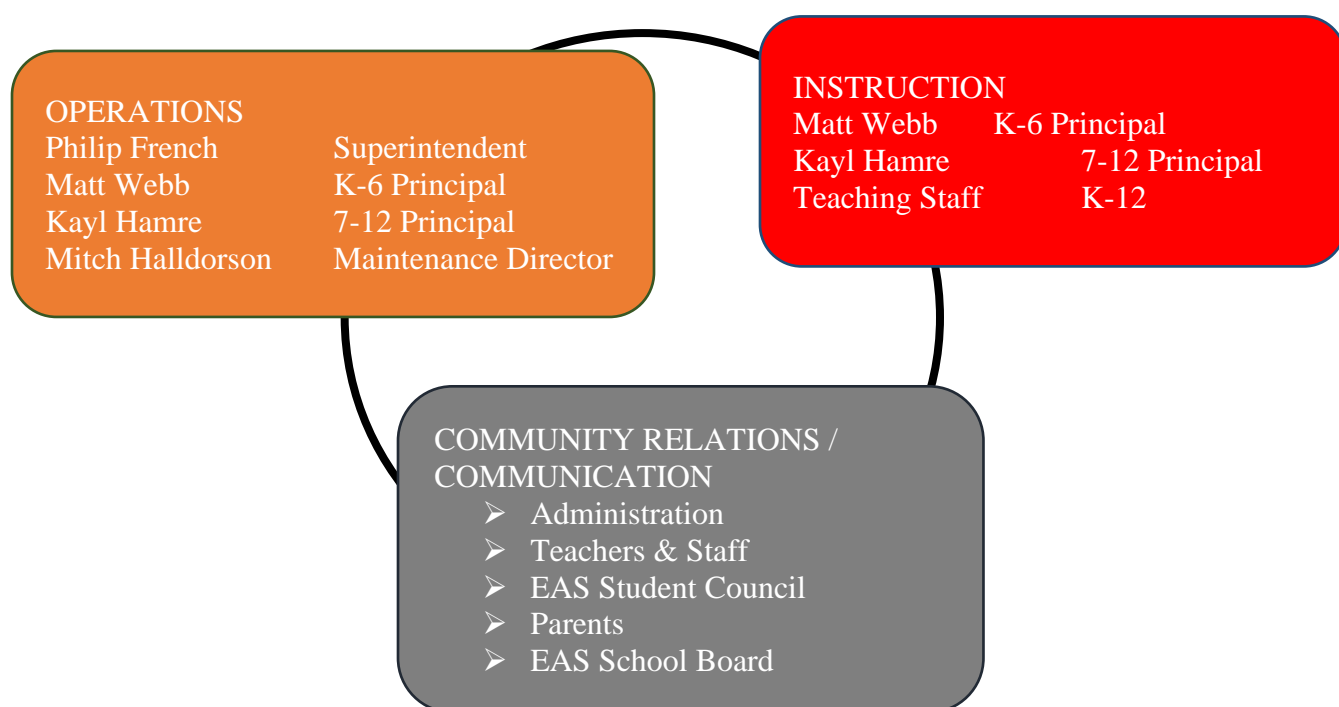
The Enderlin Area School's Return to Learning Plan was crafted and reviewed by a team consisting of the following:

- | | |
|------------------|---------------------|
| ➤ Judith Krueger | ➤ Faith Friederichs |
| ➤ Tina Stehlik | ➤ Calvin Kraft |
| ➤ Neva Hamre | ➤ Tracy Ekeren |
| ➤ Chelsey Jones | ➤ Brian Midthun |
| ➤ Katie Geske | ➤ Kayl Hamre |
| ➤ Philip French | ➤ Matt Webb |

Input was gathered by various means to allow for a wide range of input, while maintaining social distancing.

COVID-19 RESPONSE TEAM & COORDINATORS

This organizational structure was crafted to assist in the development and monitoring of the district return to learning plan. This structure identifies leaders and guiding team members that will serve as a voice in how the district responds to COVID-19 during the school year. This plan is designed to address the issues of reopening as well as provide a nimble and responsive process to address issues that may not be recognized today.



The three components have been identified as key operational teams that consist of multiple departments. Each operational team will work to implement the return to learn plan and address challenges as they arise.

COVID-19 District Coordinators

As a school district we will have an identified COVID-19 Coordinator who will be responsible for the health and safety preparedness and response planning. Coordinators will make themselves available to the NDDoH 24 hours a day / 7 days a week to respond to phone calls from public health. This position will assist public health in identifying and notifying close contacts in the school setting. The coordinator will be responsible for reporting cases of COVID-19, found in the school setting, to health officials and the State Superintendent's office.



Philip French will assume the role of COVID-19 Coordinator for Enderlin Area School. If Mr. French is unable to be reached the secondary contacts will be Kayl Hamre, 7-12 Principal and Matt Webb, K-6 Principal.



ENDERLIN AREA SCHOOL

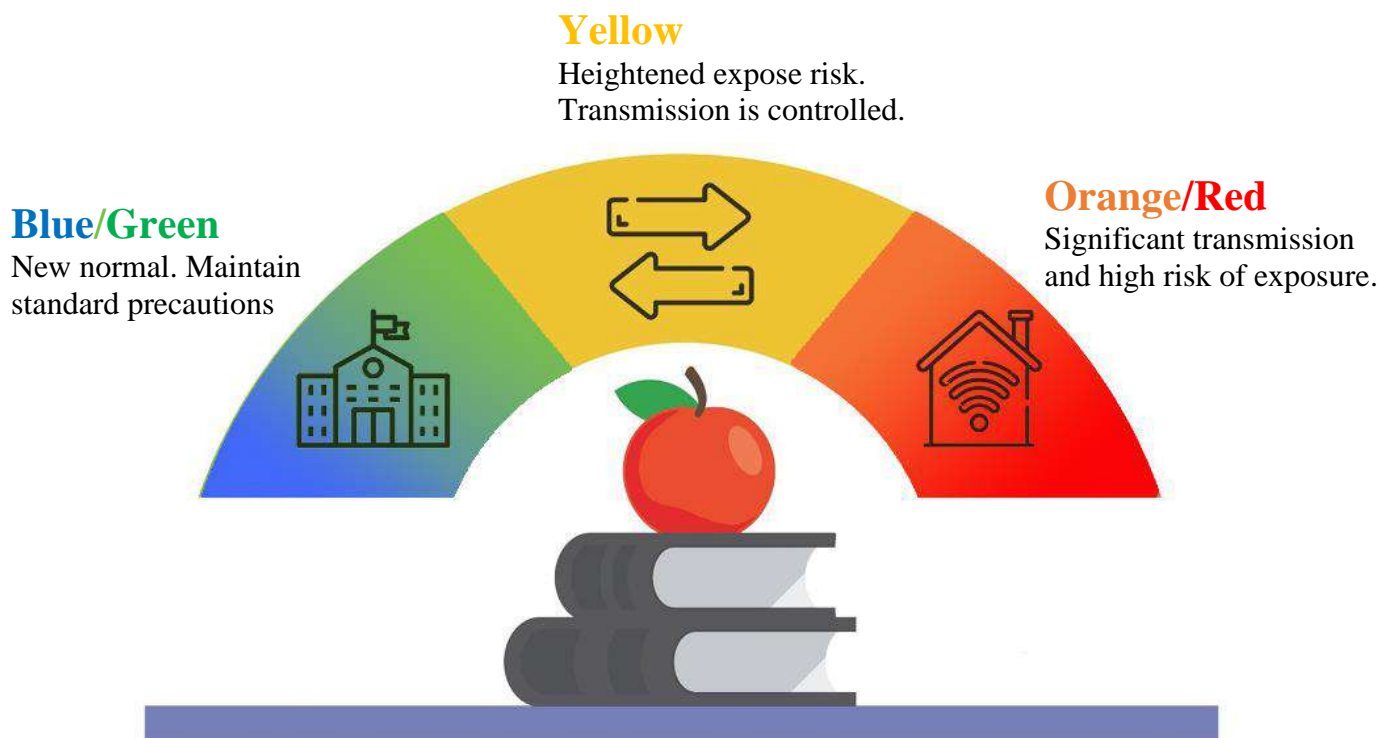
COVID-19 PHASE GUIDANCE

Personnel	Personal Protection Equipment (PPE)
All staff (other than what is outlined)	<p>Required to wear cloth face coverings</p> <p>Required to wear face coverings on school transportation (bus)</p> <p>Required to sanitize hands upon entering and exiting any room within the school building.</p>
All Students	<p>Required to wear cloth face coverings.</p> <p>Required to wear face coverings if using school transportation (bus)</p> <p>Required to sanitize hands upon entering and exiting any room within the school building.</p> <p>Students will be provided breaks and allowed to remove their mask when outside or in spaces that can accommodate social distancing.</p> <p>High school students will be allowed to leave campus during lunch.</p> <ul style="list-style-type: none"> ➤ Students MUST wear face covering and sanitize hands upon reentering the facility. ➤ Student may ONLY enter and exit the building through Door #2 ➤ Students MAY NOT bring food or drink into the building following lunch,
Public facing staff (i.e. receptionists/clerical) unless plexiglass partition is in place.	<p>Required to wear face shield or cloth face mask.</p> <p>Required to sanitize hands upon entering and exiting any room within the school building.</p>
Staff caring for / instructing a student in a small space – small group – for more than 15 minutes. (i.e. SPED, EL, Para)	<p>Required to wear cloth face coverings</p> <p>Required to wear face coverings on school transportation (bus).</p> <p>Required to sanitize hands upon entering and exiting any room within the school building.</p>
Food Service Staff	<p>Required to wear a cloth face covering.</p> <p>Required face shield while providing direct service to students.</p> <p>Required to wear protective gloves when handling food or food related items. Must dispose of and replace each time entering or exiting the kitchen.</p>
Bus Drivers	<p>Required to wear cloth face coverings in the school building.</p> <p>Required to wear face coverings on school transportation (bus) while students are loading and unloading.</p> <p>Required to sanitize hands upon entering and exiting the school bus and any room within the school building.</p>

Visitors	<p>Required to wear cloth face coverings at all times in the school buildings.</p> <p>Required to sanitize hands upon entering and exiting any room within the school building.</p> <p>Until completion of new construction: Visitors will be met at Door #1 and ushered to their place of business. (i.e. student services office, IEP/504 meeting, scheduled meeting with administration and/or teacher)</p> <p>Upon completion of new construction: Visitors enter through the main lobby doors and go directly to the student services office. All business will be conducted at that point. Meetings will only take place in the new conference room.</p>
----------	--

PHASES

The following phases will be used to define the community risk level associated with COVID-19. These phases align with the color-coded guidance in the ND Smart Restart Plan. Each level is reported to schools by the NDDoH after rigorous testing and assessment of cases in the community. [ND Smart Restart Plan](#)



Enderlin Area School will need to work with the Ransom County Dept. of Health to determine the criteria for a potential closure.

INSTRUCTIONAL MODELS

The instructional models used by the district will be guided, in part, by the risk level of COVID-19 in the community as defined within the phases above. This is a guide as instructional models could be altered based on other factors, such as occupancy levels, age of children, and abilities to move certain classes online.

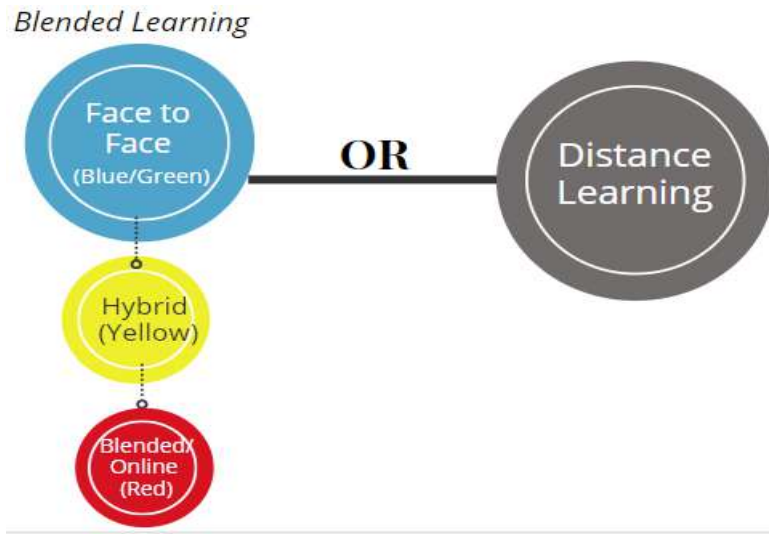
Virtual Learning Expectations:

- Must meet all Enderlin Area School District credit requirements

EAS Instructional Models

There are two primary instructional models from which families can choose:

- **Face-to-Face** (a blended model with the goal of being at school in a face-to-face setting as often as circumstances allow). Students in the Face-to-Face model may experience movement to and from the following modes of instruction depending on specific COVID-19 situations in classrooms, buildings, and the district (as defined by Decision Making Guidance in the ND Smart Restart Plan).
- **Distance Learning** (a model where students are primarily based from their home environment). **K-12 parents can transfer their child into the Distance Learning Model by calling 701-437-2240 to register between August 3rd-August 14th 2020 (between the hours of 9 a.m. and 4 p.m.).**



Face-to-Face (Blended Learning) Model:

The face-to-face blended model used by the district will be guided, in part, by the risk level of COVID-19 in the community (Blue, Green, Yellow, Orange, and Red). This is a guide, as instructional modes could be altered based on factors including but not limited to occupancy levels, age of children, and abilities to establish high quality instruction. Students in the Face-to-Face model may experience movement to and from the following modes of instruction depending on specific COVID-19 situations in classrooms, buildings and the district (as defined in the Decision-Making Guidance).

Phase Level		Students will primarily experience...
Blue	Green	<u>Face-to-Face Mode of Instruction</u> Face-to-Face instruction is defined as having students in buildings with educators following protocols and procedures to address safety of all.
Yellow		<u>Hybrid Mode of Instruction</u> The Hybrid mode will consist of a combination of Face-to-Face and Distance Learning formats. Operating in Hybrid mode will reduce the number of students in buildings but ensures some face-to-face instruction and interaction along with some distance learning. The Hybrid mode will be consistent among K-6 and among the 7-12. However, it may vary among the divisions.
Orange	Red	<u>Online -Blended Mode of Instruction</u> The Online - Blended mode will provide education online with consistency in the coursework at each grade level. This model will be primarily off-campus and use resources to meet the varying needs students. There may be some students on campus.
<i>The ability to “BLEND” these instructional modes for students is important as no one mode will meet the needs of all students.</i>		

The color phases are outlined below from each major component of the student experience.

	Blue/Green Face-to-Face Mode of Instruction
COVID-19 Response Plan for Positive or Close Contact	<ul style="list-style-type: none"> ➤ Constant monitoring and communication between district staff, families and public health will occur regarding current cases. <ul style="list-style-type: none"> • Any positive case MUST be reported to the school nurse/district nurse. ➤ A designated space to quarantine sick students will be identified in all buildings. <ul style="list-style-type: none"> • Students presenting symptoms will be required to wear a mask and will be quarantined until they are picked up. ➤ Students and staff who are ill are not to be in the school building. ➤ EAS will follow CDC and NDDoH guidance for positive cases and close contact quarantine/isolation procedures. ➤ Personally identifiable information will be kept confidential. ➤ <i>Close contact is defined as within 6 ft of an individual for 15 minutes or more.</i>
Health and Safety Plan	<p>Hygiene & Cleaning</p> <ul style="list-style-type: none"> ➤ Handwashing will occur before and after meals, after recess, after gym, etc. ➤ Encourage and reinforce good respiratory hygiene (sneeze/cough into elbow). ➤ Hand sanitizer will be available in high touch areas. ➤ Students and staff who are not feeling well must stay home. ➤ A normal daily cleaning schedule will be followed. ➤ An increased frequency of cleaning and disinfecting will occur on high-touch surfaces. ➤ Classrooms will have the proper disinfectant to clean surfaces throughout the day. ➤ Custodial schedules may be adjusted to ensure proper disinfection and sanitation takes place during and after school hours. ➤ EAS will limit sharing of materials among students (personal supplies will be designated for individual student use only). <p>Physical Distancing</p> <ul style="list-style-type: none"> ➤ EAS will maximize space between students as much as possible. ➤ Masks are required when 6-foot social distances are not possible. ➤ Enhanced health/safety measures around procedures including but not limited to: <ul style="list-style-type: none"> • arrival/dismissal • lunch procedures • building movement and proximity <p>Additional Precautions</p> <ul style="list-style-type: none"> ➤ Outside visitors will be limited.
School Meals	<ul style="list-style-type: none"> ➤ Students will be offered meals either through regular meal service or curbside pick-up for those students in the distance learning setting. ➤ There will be no self-serve food products. (milk, salad bar, condiments, etc) ➤ EAS will utilize cafeteria space while following social distance guidelines.

	<ul style="list-style-type: none"> ➤ Some classes may eat in alternative spaces, such as classrooms, outdoors, etc. ➤ All staff will wear masks while preparing food and serving students. ➤ EAS will modify lunch schedules as needed. ➤ Student keypads will not be used to enter lunch numbers. ➤ Salad bars may be used based on guidance from the NDDoH.
Transportation	<ul style="list-style-type: none"> ➤ A normal daily cleaning schedule will be followed. ➤ High touch point areas will be disinfected after every route. ➤ Cleaning and disinfecting will occur after every route or repair. ➤ Hand sanitizer will be provided at the main door. ➤ Students will be required to wear masks ➤ Bus Drivers will be required to wear masks during loading and unloading of students
Instructional Plan	<p>All Instruction:</p> <ul style="list-style-type: none"> ➤ Masks will be required when 6-foot social distancing cannot be maintained, especially in common areas. ➤ As much as possible, instruction will resemble a typical school day <p>Attendance:</p> <ul style="list-style-type: none"> ➤ Students attend school on-site 5 days a week. Students have a normal schedule. ➤ Attendance will be captured based on the engagement in and completion of in-person and blended online learning activities. <p>Special Education:</p> <ul style="list-style-type: none"> ➤ Service delivery will include direct teaching from specialists. ➤ Contingency Plans (all IEPs) will be collaboratively developed based on all of the data available to teams, and ensure that services are provided within the safety guidelines for the district and building, as well as contractual obligations for providers. ➤ Pull out and itinerant services will be provided following protocols for cleaning and social distancing. ➤ All options for a student's least restrictive environment can be considered by teams. ➤ Data will be gathered according to a student's IEP or Contingency Plan. ➤ Special Education parent meetings will continue with face-to-face meetings or virtual meetings depending on safety protocols for the building in which they are held. ➤ Determination of Free Appropriate Public Education (FAPE) will continue with current practices. ➤ Initial eligibility evaluations and three-year reevaluations will continue to follow current evaluation procedure. <p>504 Policy and Procedures</p> <ul style="list-style-type: none"> ➤ The requirements of Section 504 will be followed to ensure all students have equal access to study and learn in an environment free from discrimination. ➤ Current Child Find Processes will continue to be followed. ➤ Contingency plans may be created collaboratively to plan for potential Hybrid and Blended Learning.

Activities	<ul style="list-style-type: none"> ➤ Activities would proceed as normal but will follow guidelines from the NDDoH and the NDHSAA. ➤ No in-season tournaments or jamborees.
-------------------	--

	Yellow Hybrid Mode of Instruction
COVID-19 Response Plan for Positive or Close Contact	SAME AS BLUE/GREEN PHASE
Health and Safety Plan	<p>SAME AS BLUE/GREEN PHASE</p> <p>Physical Distancing</p> <ul style="list-style-type: none"> ➤ Schools are at approximately 50% student capacity with modified-day rotation between face-to-face and distance learning. ➤ Masks are required when 6 foot social distancing cannot be maintained. <p>Additional Precautions</p> <ul style="list-style-type: none"> ➤ Outside visitors will be limited. ➤ Limit the amount of items taken home and brought back to school everyday.
School Meals	<p>SAME AS BLUE/GREEN PHASE</p> <p>PLUS:</p> <ul style="list-style-type: none"> ➤ Modified menus that meet federal guidelines. ➤ No salad bars will be used on-site. ➤ Masks will be required when in line for meal service if social distancing guidelines can't be met. ➤ Curb-side to go meals will be available for purchase on non-contact days.
Transportation	<p>SAME AS BLUE/GREEN</p> <p>PLUS:</p> <ul style="list-style-type: none"> ➤ Increased disinfecting of surfaces throughout the day. Limited bus capacity will be put in place. ➤ Bus drivers and monitors will wear masks.
Instructional Plan	<p>All Instruction:</p> <ul style="list-style-type: none"> ➤ Schools are at approximately 50% student capacity with modified-day rotation between face-to-face and distance learning (e.g. approximately 2 days in person and 3 days distance learning). ➤ Students will be grouped by their last name. Families will be kept together in the same group regardless of last name. ➤ Electives and non-core may be modified. <p>Grades K-6:</p> <ul style="list-style-type: none"> ➤ Classroom teacher leads face-to-face instruction and front-loads activities with students for the off-site days. ➤ Teachers engage in virtual sessions, check-ins, student feedback/grading, planning, and extra support on Friday distance-learning days. <p>Grades 7-12:</p> <ul style="list-style-type: none"> ➤ EAS may modify elective and large classes.

	<ul style="list-style-type: none"> ➤ Building hours may be restricted. <p>Grading and Attendance:</p> <ul style="list-style-type: none"> ➤ Attendance will be captured based on the engagement in and completion of in-person (approx. 2 days a week) and blended online learning activities (approx. 3 days a week). ➤ Grading will be based on a student's performance as related to state content standards. <p>Special Education:</p> <ul style="list-style-type: none"> ➤ All safety precautions from the Blue/Green phase plus: ➤ Direct teaching from specialists may occur after the core instruction. ➤ Teams will determine the most appropriate method (virtual, in person, etc), time, and location of service delivery, assessment, meeting, and evaluations through the development of a contingency plan. ➤ Teams will review adaptations to determine if additional adaptations are necessary for blended learning times. Changes to adaptations will be reflected in Contingency Plans. ➤ Services will be provided individually or with planning of groups to minimize contact with others to the greatest extent possible within building protocols. <p>504 Policy and Procedures</p> <ul style="list-style-type: none"> ➤ Same as Blue/Green Phase
Activities	<ul style="list-style-type: none"> ➤ Activities would proceed as normal but will follow guidelines from the NDDoH and the NDHSAA. ➤ Attendance at activities WILL BE limited. ➤ Static practice groups will be scheduled. ➤ Locker room access will be limited. ➤ Increased frequency of cleaning of equipment and facilities will take place. ➤ No in-season tournaments or jamborees.

Orange / Red Online - Blended Mode of Instruction	
Health and Safety Plan	<p>Physical Distancing</p> <ul style="list-style-type: none"> ➤ Students will be not allowed in the building except for special circumstances approved by administration. ➤ Masks are required at all times. <p>Additional Precautions</p> <ul style="list-style-type: none"> ➤ Outside visitors will be not allowed in the building except for special circumstances approved by administration. ➤ Masks are required at all times. <p>PLUS:</p> <ul style="list-style-type: none"> ➤ Follow CDC/NDDoH guidelines. ➤ Enhanced cleaning and disinfection after notification of a confirmed case of COVID-19. ➤ Ensure families have medications/supplies at home for unexpected closings.

School Meals	<ul style="list-style-type: none"> ➤ Modified menus will be in place. ➤ Curbside to go meals will be offered following all federal guidelines. ➤ Delivery Schedules of meals and locations to be determined.
Special Education Transportation	<ul style="list-style-type: none"> ➤ Normal daily cleaning schedule. ➤ Disinfect high touch point areas after every route. ➤ Provide hand sanitizer at main door. ➤ Cleaning and disinfecting after every route or repair. ➤ Disinfect surfaces throughout the day. ➤ Limited bus capacity. ➤ Bus drivers and monitors wear masks. ➤ Special education transportation will be available for those students who are eligible and for whom transportation is outlined on the contingency plan.
Instructional Plan	<p>Instruction at all Levels:</p> <ul style="list-style-type: none"> ➤ Students will receive standards-based instruction that is comprehensive, rigorous, and differentiated. ➤ Instruction will include both regularly scheduled live meetings and self-paced activities. ➤ Additional Elementary, Middle, High School, & Special Ed supports may be available. <p>Grading and Attendance:</p> <ul style="list-style-type: none"> ➤ Attendance will be captured based on the engagement in and completion of in-person and blended online learning activities. ➤ Grading will be based on a student's performance as related to state content standards. <p>Grades K-6:</p> <ul style="list-style-type: none"> ➤ Instruction will be synchronous (live) and asynchronous (self-paced). ➤ Connections with students is a high priority and instruction is delivered by classroom teachers following common pacing. ➤ Teachers will provide frequent live and/or recorded direct-instruction. <p>Grades 7-12:</p> <ul style="list-style-type: none"> ➤ Instruction will be synchronous (live) and asynchronous (self-paced). ➤ A student's courses and/or course load may be modified. ➤ Teachers will provide frequent live and/or recorded direct-instruction. ➤ Teachers will continue to follow a uniform quarterly scope/sequence (pacing/curriculum guide). <p>Special Education:</p> <ul style="list-style-type: none"> ➤ Direct teaching will be conducted in person or synchronously (live) through a virtual format. ➤ Teams will determine the most appropriate method (virtual, in person, etc), time, and location of service delivery through the development of a contingency plan. These plans will include considerations for scheduling service from multiple providers to facilitate manageable schedules for families. ➤ Teams will review adaptations to determine if additional adaptations are necessary for blended learning times. Changes to adaptations will be reflected in Contingency Plans. ➤ In person services, as identified in a student's contingency plan, will be delivered using building safety protocols.

	<ul style="list-style-type: none"> ➤ Services will be provided individually or with planning of groups to minimize contact with others to the greatest extent possible within building protocols. ➤ Special Education parent meetings will continue with face-to-face meetings or virtual meetings depending on safety protocols for the building in which they are held. ➤ Initial eligibility evaluations and three-year reevaluations will continue to follow current evaluation procedure with encouragement for students to come on-site with safety protocols in place. If a family chooses to end the evaluation process the discussion will be documented and next steps will be determined. ➤ Free Appropriate Public Education (FAPE) determination will continue with current practices. ➤ Materials will remain in the home environment and not brought to any onsite sessions. ➤ Onsite, face-to-face instruction will be followed by the EAS cleaning process. <p>504 Policy and Procedures:</p> <ul style="list-style-type: none"> ➤ SAME AS BLUE/GREEN PHASE
Activities	<ul style="list-style-type: none"> ➤ EAS will follow guidelines from the NDDoH and the NDHSAA. ➤ No practices, captains' practices, competitions, performances, or games. ➤ Coaches may provide individual daily/weekly online workouts.

DISTANCE LEARNING (PARENT OPT-IN) MODEL

Enderlin Area School will offer a K-12 Year-Long, Full-Time Distance Learning Model for those parents interested. This will be comprehensive and rigorous. **K-12 parents can transfer their child into the Distance Learning Model by calling 701-437-2240 to register between August 3rd - August 14th (between 9 a.m. and 4 p.m.). If you do NOT call to register in distance learning your child(ren) will be enrolled in the face-to face learning option.** Students must remain in the model until the end of 1st semester. Students and Families can choose to opt back into face-to-face learning at the semester break, or they may choose to enroll in distance learning for the second semester. Not all electives will be available K-12 in this model in the EAS Distance Learning Model.

Parent Expectations:

- Provide internet access for your child to access the distance learning platform.
- Provide a quiet study space for your child.
- Ensure your child engages daily in online learning activities.
- Parents should be aware that a limited number of courses may be available for their child

Student Expectations:

- Students must be aware they will be assessed and graded consistently through the online learning platforms.
- Daily participation and engagement in all courses will be expected.

Distance Learning Model (Parent Opt-In)	
School Meals	➤ <i>In Progress - waiting for response from state.</i>
Special Education Transportation	➤ Special education transportation will be determined through the eligibility process and outlined on the contingency plan.
Instructional Plan	Instruction at all levels <ul style="list-style-type: none">➤ Student's will receive standards-based instruction that is comprehensive, rigorous, and differentiated.➤ K-12 parents can transfer their child into the Distance Learning Model by August 14th➤ Students must remain in the model for one semester➤ Students in grades 9-12 will NOT have access to all electives when participating in the EAS Distance Learning Model.➤ This model will have specific protocols and procedures for staff and students.

Grading and Attendance:

- Attendance and grading will be determined by the online distance learning platform being utilized.
- All students K-12 will adhere to the EAS grading scale.
- Attendance will be captured based on the engagement in and completion of online learning activities.
- Grading will be based on a student's performance as related to Standards. All 7-12 grades will be handed out by the NDCDE.

Grades K-5:

- All students K-5 will be enrolled in the Prep Digital Elementary School through Arizona State University.

Grades 6-12:

- All students in grades 6-12 will be enrolled in the North Dakota Center for Distance Education platform.
- All students in 6th, 7th and 8th grade will be required to enroll in a minimum of 5 courses.
- All students in 9th -12th grade will be required to enroll in a minimum of 6 courses.

Special Education:

- Families electing to enroll their students in the Distance Learning Model will have a contingency plan developed in conjunction with service providers identifying how services will be provided.
- Teams will determine the most appropriate method (virtual, in person, etc), time, and location of service delivery through the development of a contingency plan. These plans will include considerations for scheduling service from multiple providers to facilitate manageable schedules for families.
- In person services, as identified in a student's contingency plan, will be delivered using building safety protocols.
- Special Education parent meetings will continue with face-to-face meetings or virtual meetings depending on safety protocols for the building in which they are held.
- Initial eligibility evaluations and three-year reevaluations will continue to follow current evaluation procedure with encouragement for students to come on-site with safety protocols in place. If a family chooses to end the evaluation process the discussion will be documented and next steps will be determined.
- Free Appropriate Public Education (FAPE) determination will continue with current practices (IEP development or revisions).
- Materials will remain in the home environment and not brought to any on-site sessions.

504 Policy and Procedures

- 504 Case-Manager/Coordinator will review plans and provide appropriate and necessary accommodations for students to access the provided learning opportunities.

	<ul style="list-style-type: none"> ➤ Child Find process and procedures will be followed. ➤ 504 Case-Manager/Coordinator will review all current plans and accommodations in place and communicate with teachers, parents, and Administration regarding a review process. ➤ Case-Manager/Coordinator will collaborate with parents/guardians to develop a contingency learning plan for the student to potentially move to hybrid or face-to-face learning. ➤ Case-Manager/Coordinator will work with administration, classroom teachers, and parents/guardians to support the accommodation process and ensure accommodations as per Section 504 plan are put in place.
Activities	<ul style="list-style-type: none"> ➤ Students in the Distance Learning Model may fully participate in High School Activities per NDHSAA rules and guidelines. ➤ Students/Families will be required to follow all Face-to-Face Model precautions and the EAS participation guidelines.

GUIDANCE FOR GRADE LEVEL & SCHOOL BUILDING LEVEL PROTOCOLS

This is intended as guidance for COVID-19 Coordinators and school leaders on when to close classrooms, grades, and buildings.

- Close contact as defined as being within 6 ft. of another individual for 15 min or greater.
- If a school is closed for any length of time, the district will determine which mode of instruction will resume.
- NDDoH may close a school or district at their discretion.

FACILITY ACCOMMODATIONS & PROTOCOLS

Mask/Face Shields

Availability

- The school has purchased Enderlin Logo masks (gaiters) for all teachers and will purchase face shields.
- The school will provide a cloth mask to every student on the first day of school.

- There will be disposable masks available for those that forget their mask.
- Information on purchasing options for masks will be provided to parents.

Student and Staff Expectations

- K-3 students will be required to wear masks in the halls or in the classroom when distancing cannot be maintained.
- 4-12 students will be required to wear masks in the halls or in classrooms where 6 ft distancing cannot be maintained
- All students will be required to wear masks when they are in the hallways before and after school.
- Masks will be required in the after-school program if a 6 ft distance cannot be maintained.
- Teachers will be expected to demonstrate and support the mask requirement.
- Teachers do not need to wear a mask when teaching if a 6ft distance can be maintained.
- Teachers will be required to wear a mask when working closely with students.
- Mask washing instructions will be provided to parents. Masks must be washed regularly.
- Administration will allow exceptions to the mask requirement for medical reasons or Special Ed situations.

TRANSPORTATION

Please understand that the use of school transportation is a privilege offered to all of our Enderlin Area school district families. Failure to follow the protocols set forth may result in a loss of this privilege.

- Students **WILL** wear masks on school transportation. This includes route and activity busses.
- Seating charts will be created for the busses that group students by:
 1. Family unit
 2. Grade level
- The first 2-3 rows on each bus will be left open for in-town bus stops.
- Parents dropping off students
 - Grade K-3 students at Door #4
 - Grade 4-12 students at Door #2
- Until the new addition is complete
 - Grade K-12 students will enter the school through Door #2.
- There will be no change to the current routes (at this time)
- Foggers will be used to sanitize busses after each route.

HEALTH & SAFETY PROTOCOLS

Student & Staff Health

Monitoring the health of students and staff will be an important component of a safe and healthy educational environment. Enderlin Area School will take the following measures to ensure all students and staff are healthy while they are at school.

Identifying Students & Staff at Higher Risk

- Students with underlying health conditions will be identified during the enrollment process.
- The superintendent's office will inquire of all employees if they are at-risk, based on a health professionals' diagnosis. The superintendent will work in partnership with the building principal and the employee to coordinate adjustments to the work schedule or workplace.
- When the NDDoH or Ransom Co. Health inform the district of a student or staff member that is COVID-19 positive that information will be passed on to the superintendent and the building principal as allowable within district policy and law.

Isolation & Quarantine

- Definitions
 - Isolation – For people who are already sick from the virus. A prevention strategy used to separate people who are sick with the virus from healthy people.
 - Quarantine – For people who are not sick but have been exposed to the virus. A prevention strategy used to monitor people who were exposed for a period of time.
- Enderlin Area School will follow isolation and quarantine guidelines and directives as set by NDDOH and/or Ransom Co. Health.

If a student or staff members becomes sick at school (or school event)

- Student
 - Direct/escort the child to the office.
 - The child shall be provided a facial covering and isolated in a designated sick room.
 - Parent/guardian will be contacted to pick up their child.
- Staff
 - Inform your building principal immediately and wear a face mask/shield until they can be replaced if supervising students at that time.
 - Leave the school building/grounds and consult with a health care professional.

Return to School

- A student or staff member that has been isolated or quarantined may return as directed by NDDoH and/or Ransom Co. Health.
- Please refer to Decision Tree for Symptomatic Individuals in schools document at the end of this Plan.

HEALTH AND SAFETY GUIDANCE

The Enderlin Area School District strives to provide a healthy and safe environment for all who occupy our schools. The following guidelines are intended to provide a framework for the district's response to COVID-19.

Resources

ND Department of Public Instruction - <https://www.nd.gov/dpi/parentscommunity/nddpi-updates-and-guidance-covid-19>

ND Department of Health - <https://www.health.nd.gov/diseases-conditions/coronavirus>

Center for Disease Control and Prevention - <https://www.cdc.gov/coronavirus/2019-nCoV/index.html>

Best Intentions

Despite taking every reasonable precaution there is not a guarantee that our school will be without risk as it relates to COVID-19. The virus will be present on our buses, in our classrooms, and at our activities. In certain situations, social distancing is not possible in a school setting. Our actions, as outlined in this plan, will not prevent any student or staff member from being in contact with the virus.

Protect Yourself and Others

Wash your hands often



- Wash with soap and water for at least 20 seconds especially after blowing your nose, coughing, or sneezing.
- Students and staff will be encouraged to wash hands before and after lunch.
- If soap and water are not available, use hand sanitizer that contains at least 60% alcohol.
- Avoid touching your eyes, nose, and mouth with unwashed hands.
- Students are encouraged to wash their hands often throughout the day.

Water Fountains

- Water fountains will not be available. Water bottle fillers WILL BE available.
- Students are encouraged to bring their own water bottle.

Avoid close contact



- Keep social distance from others especially important for people who are at a higher risk of getting sick.

- Alternate or modified schedules, adjustments to use of common areas, use of outdoor spaces and other actions that increase physical separation may be considered.
- The sharing of instructional materials should be limited as much as possible.
- Physical separation on busing, one student per seat, will be recommended but cannot be guaranteed.

Cover coughs and sneezes



- Always cover your mouth and nose with a tissue when you cough or sneeze or use the inside of your elbow.
- Throw tissues away and wash hands or use hand sanitizer to prevent spread.

Clean and disinfect



- School staff should clean and disinfect frequently touched surfaces daily.
- Shared materials (not recommended) should be cleaned.
- Classrooms will be cleaned nightly by custodial staff.

Cover your mouth and nose with a cloth face cover when around others.

- Educators need to teach students how to properly wear a face covering so they are prepared to use them on school buses or other situations in close proximity with others.
- Resources from NDDPI and MPS will be provided to teachers.

Monitor your health daily



- Be alert for symptoms. Watch for a fever, cough, or shortness of breath.
- Parents are asked to screen their children each day before sending them to school.
- Use the screening guidance provided.
- Staff and students who are sick should stay home.
- Temperatures of symptomatic students or staff may be taken at the school office.
- Symptomatic students will be isolated, and their guardians contacted.



BEFORE SCHOOL!



Parents are asked to review this daily health checklist by answering these questions before sending their child to school.

(Parents do not need to send the questionnaire to school)

Has your child had close contact with a confirmed case of COVID-19 in the past 14 days?

Yes____ No____

Does your child have a new or worsening shortness of breath?

Yes____ No____

Does your child have new or worsening cough?

Yes____ No____

Does your child have a fever of 100.4 or greater?

Yes____ No____

Does your child have chills?

Yes____ No____

Does your child have a sore throat?

Yes____ No____

Does your child have a new loss of taste or smell?

Yes____ No____



If **YES** to any of the questions **STOP!**

Do not send your child to school. Contact your healthcare provider. Contact your child's school to inform them of your child's absence.



If you are able to answer **NO** to all questions, go to school.

COVID-19: What's the Difference Between Physical Distancing, Quarantine and Isolation?

	PHYSICAL DISTANCING	QUARANTINE	ISOLATION
Who is it for?	People who haven't been exposed to the virus or are not aware of exposure to the virus.	People who don't currently have symptoms of the virus but were exposed to the virus.	People who are already sick from the virus.
What is it?	A precautionary measure used to help prevent the spread of the virus.	A prevention strategy used to monitor people who were exposed to the virus for a period of time to see if they become ill.	A prevention strategy used to separate people who are sick with the virus from healthy people.
Where does it take place?	Takes place outside the home in public places like grocery stores and work environments.	Takes place in a home setting.	Can take place in a home when medical attention is not required. Takes place in a hospital when medical care is required.
When do I use it?	At all times until further directed by the ND Department of Health.	If you have recently traveled internationally or have known exposure to the virus.	If you have tested positive or have symptoms and have not yet obtained a test.
How long is it for?	At all times until further directed by the ND Department of Health.	14 days after your last exposure. Once your quarantine period has ended, if you do not have symptoms, you may return to your normal routine.	A minimum of 10 days from the beginning of symptoms and 72 hours after your fever is gone without the use of fever-reducing medicine and other symptoms have significantly improved.
What does this mean for my daily life?	<ul style="list-style-type: none"> • Avoid large gatherings. • Stay 6-feet away from people. • If you are unable to stay 6-feet away from other people, wear a cloth face covering. • Call or video-chat with friends or loved ones, particularly those that are elderly or have underlying health conditions that places them at high-risk. • If possible, work from home. • Practice good hygiene and avoid shaking hands or touching your face. • If you become ill and need medical attention, call your health care provider. 	<ul style="list-style-type: none"> • Stay at home and avoid close contact with others. • Do not attend school, work or any other setting where you cannot maintain a 6-foot distance from other people. • Call or video-chat loved ones. • For food, medication and other necessities, obtain through friends or family, or use a contactless delivery service. • Practice standard hygiene and precautionary measures like not sharing household items, washing your hands, and cleaning frequently touched surfaces often. • Monitor your symptoms. If you become ill and need medical attention, call your health care provider. 	<ul style="list-style-type: none"> • Do not leave your home unless it is in an emergency. If you are in a home with others, stay in a "sick" room by yourself and, if possible, do not share a bathroom. • If you have a pet and live with others, do not touch your pet. • For food, medication and other necessities, obtain through friends or family, or use a contactless delivery service. Try to stock up for the duration of the isolation. • Practice standard hygiene and precautionary measures like not sharing household items, washing your hands, and cleaning frequently touched surfaces often. • If a caregiver cleans your room or bathroom, they should wear a mask and wait as long as possible after you've used the bathroom. • Contact your health care provider immediately if you experience severe symptoms.

COVID-19 EXCLUSION GUIDANCE Decision Tree for Symptomatic Individuals in Schools

Send home or deny entry if **ANY** of the following symptoms are present:

Fever (100.4°F or higher) **OR** two or more of the following symptoms: fatigue, headache, muscle/body aches, chills, cough, shortness of breath, sore throat, congestion/runny nose, nausea, vomiting, diarrhea, abdominal pain **OR** loss of taste and/or smell. This is in addition to [general infectious disease exclusion guidance](#). People who are ill should contact their health care provider for additional guidance.

Has the person been clinically evaluated?

Tested Positive for COVID-19 ^{a,c}

Stay home at least 10 calendar days from onset of symptoms **and** for 24 hours with no fever **and** improvement of symptoms – **whichever is longer**.

Has the person been clinically evaluated?

Clinically diagnosed (not tested) for COVID-19 ^{a,c}

Stay home at least 10 calendar days from onset of symptoms **and** for 24 hours with no fever **and** improvement of symptoms – **whichever is longer**.

Has the person been clinically evaluated?

Alternate clinical diagnosis or laboratory confirmed condition (e.g., norovirus, hand/foot/mouth) ^d

Follow provider directions/ recommended treatment & return guidance

Follow the [Child Care and School Infectious Disease Guidance](#).

For a person NOT clinically evaluated who is monitoring symptoms at home

Fever (100.4°F or higher) **OR** two or more of the following symptoms: fatigue, headache, muscle/body aches, chills, cough, shortness of breath, sore throat, congestion/runny nose, nausea, vomiting, diarrhea, abdominal pain **OR** loss of taste/smell. ^c

Stay home at least 10 calendar days from onset **and** for 24 hours with no fever **and** improvement of symptoms – **whichever is longer**.

For a person NOT clinically evaluated who is monitoring symptoms at home

Other symptoms not consistent with COVID-19 ^d

Follow the [Child Care and School Infectious Disease Guidance](#).

** Siblings & household members also stay home for 14 days from last exposure to a COVID-19 case while contagious*

^c (Red Box) = COVID-19

^d (Yellow box) = Other symptoms