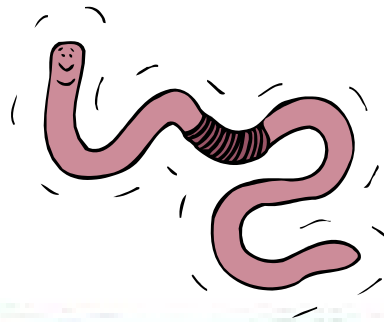


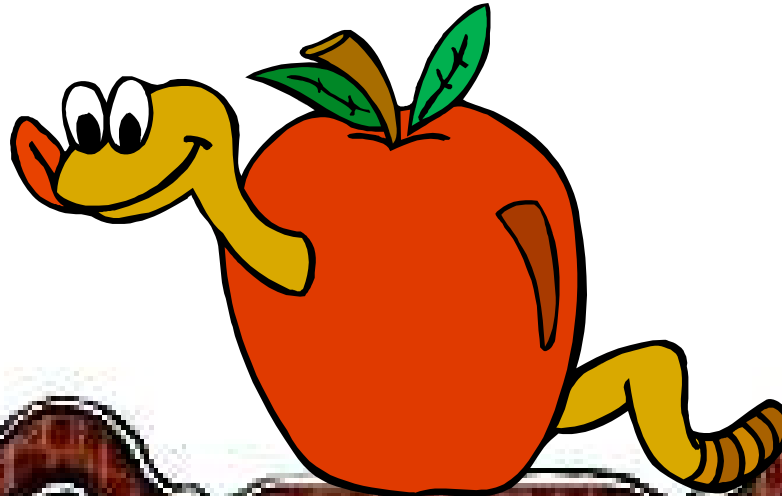
Earthworm Behavior Lab!!

Biology



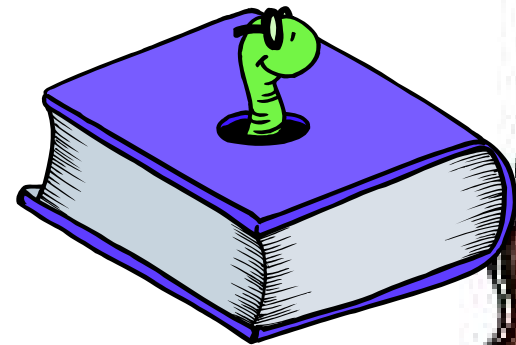
Knowledge of Earthworms:

- What do you guys already know about worms????



Video clip

- Things to think about:
 - What are worms instinctive behaviors?
 - How do worms eat?
 - Where do they reside?
 - Are they predators or prey?



- <http://dsc.discovery.com/videos/planet-earth-caves-glow-worms.html>

General Info.

• Kingdom:

- Animalia

• Phylum:

- Annelida
- Segmented Bodies

• Phylum Members:

- Leech
- Peacock Worm
- Pompeii Worm
- Many others!!





Lab Activity:

- You and your lab group will be observing the behaviors of worms under strict circumstances.
- You **MUST** treat the worms with care!!

Lab cont.

- Materials Needed:
 - 1 worm
 - Paper towels
 - 1 plate
 - Q-tips
 - Light source
 - Ruler

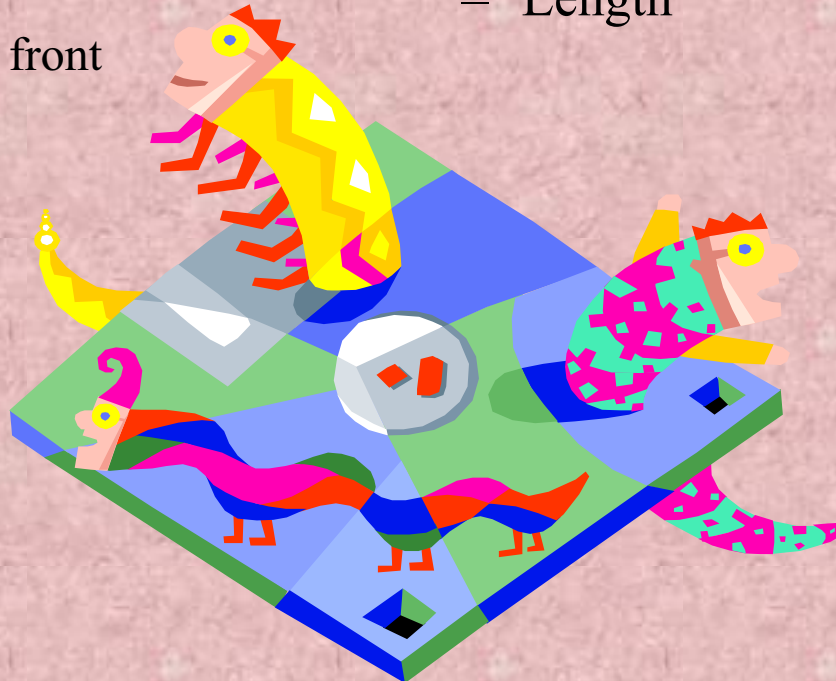
Different Observations:

General Movement:

- Observe worms response to:
 - Being flipped over
 - Running into object
 - Hit plate into wall
 - Place index card in front of worm

Anatomical:

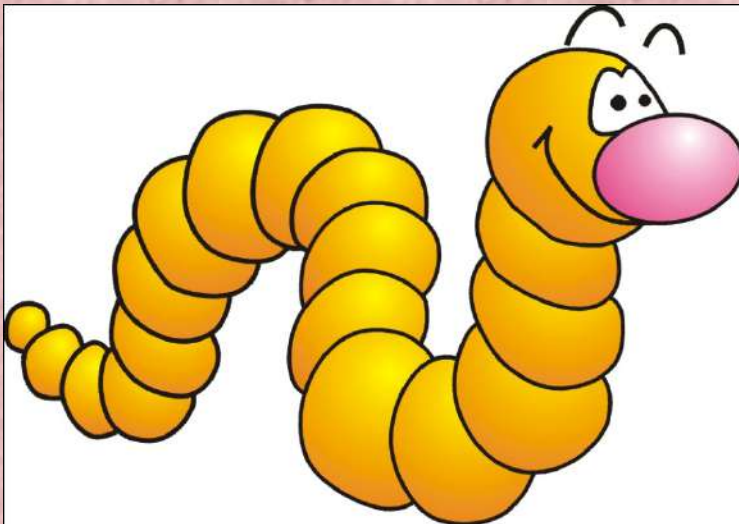
- Observe:
 - Which side is more active
 - Label parts of worm
 - Length



Observations Continued

Response to Touch

- Observe:
 - Dry or Moist Paper Towel
- 8 total trials



Response to Odor

- Observe:
 - Response to vinegar
 - Both anterior and posterior
- 4 total trials
- **DO NOT TOUCH WORM WITH VINEGAR!!!**

Observations Continued

Response to Light:

- You will develop YOUR OWN experiment!
- Testing whether worms can sense light or dark



Response to Gravity:

- Tilt plate to observe earthworms response.
- DO NOT DROP PLATE!



HAVE FUN

BUT BE

SMART

