



Eagle Point High School

Agricultural Sciences Building

2023/24 School Year

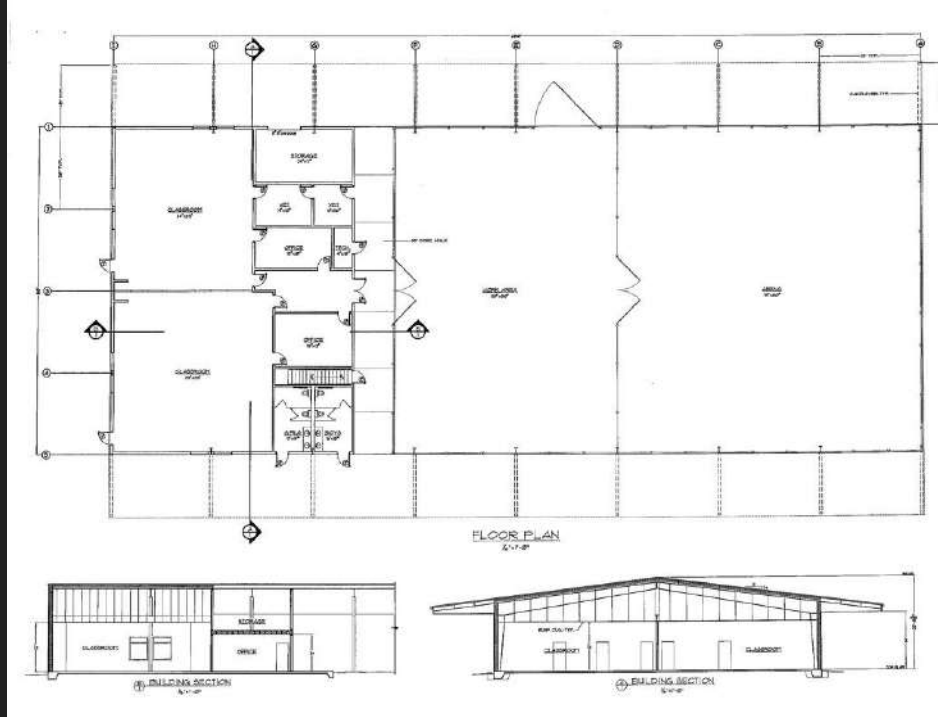


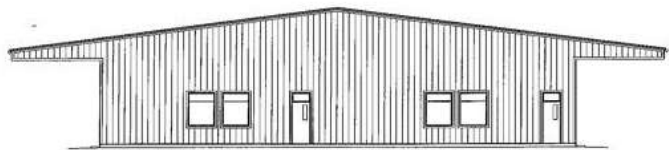
EAGLE POINT

SCHOOL DISTRICT 9

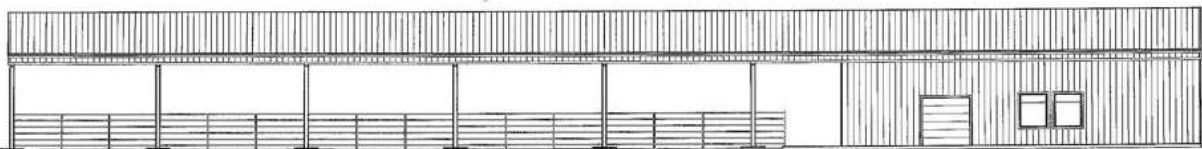
Every Student • Every Class • Every Day!

Work is now underway for the new learning space!





NORTH ELEVATION
3/4" = 1'-0"



EAST ELEVATION
3/4" = 1'-0"



SOUTH ELEVATION
3/4" = 1'-0"



Supporting Career Technical Pathways (CTE)

Vet Medicine and Animal Anatomy classes offer lessons for students to expand their knowledge about the agriculture industry.

With the new building, hands-on learning will be able to be performed onsite.



Expanding The Classroom

Students can learn with local veterinarians how some procedures work and even assist with the process.

Each new class of agricultural students learns it is more than just farming technology that's helping advance their future careers to better the lives and health of animals.



How Can I Support?

We are excited about the opportunities this new facility will bring to our Agricultural Sciences program, High School and community. We are currently accepting monetary donations as well as in-kind donations towards the construction of the building and classrooms.

MAKE A DONATION

We are happy to receive any amount &
all donations!



EAGLE POINT
SCHOOL DISTRICT 9
Every Student - Every Class - Every Day!

The Following Donation Levels Are Also Available

Diamond - \$100,000 or more

Platinum - \$50,000 - \$99,999

Gold - \$25,000 - \$49,999

Silver - \$10,000 - \$24,999

Bronze - \$5000 - \$9999

Blue - \$1000 - \$4999

These Levels will receive recognition on or around the building.



Donation Form?

The Eagle Point High School Agricultural Sciences Building Donation Form is available [HERE](#) as well as the Eagle Point High School website at www.eaglepnt.k12.or.us/ephs under Headlines and Spotlights.

We are currently accepting monetary donations as well as in-kind donations towards the construction of the building and classroom.

Questions? Contact Dean MacInnis at 541-830-6577.

Thank you again for supporting the EPHS Agricultural Sciences Program!

