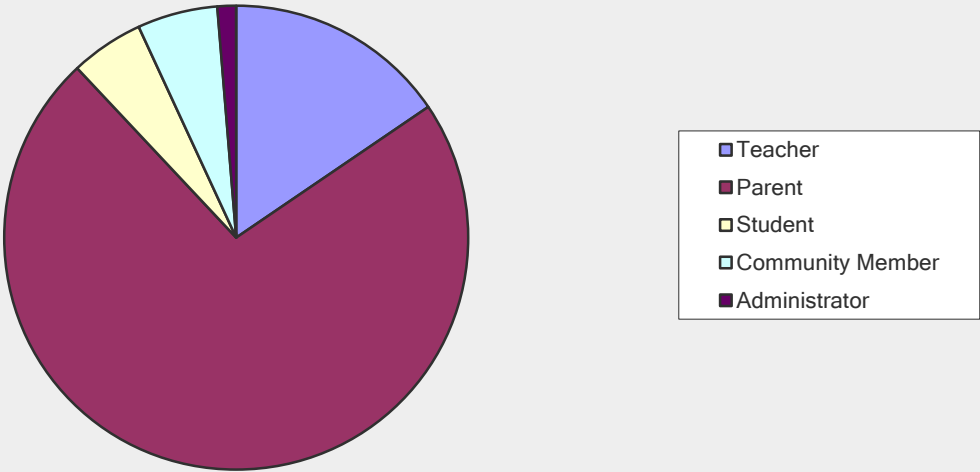


READINGTON TOWNSHIP SCHOOL DISTRICT DRESS CODE SURVEY

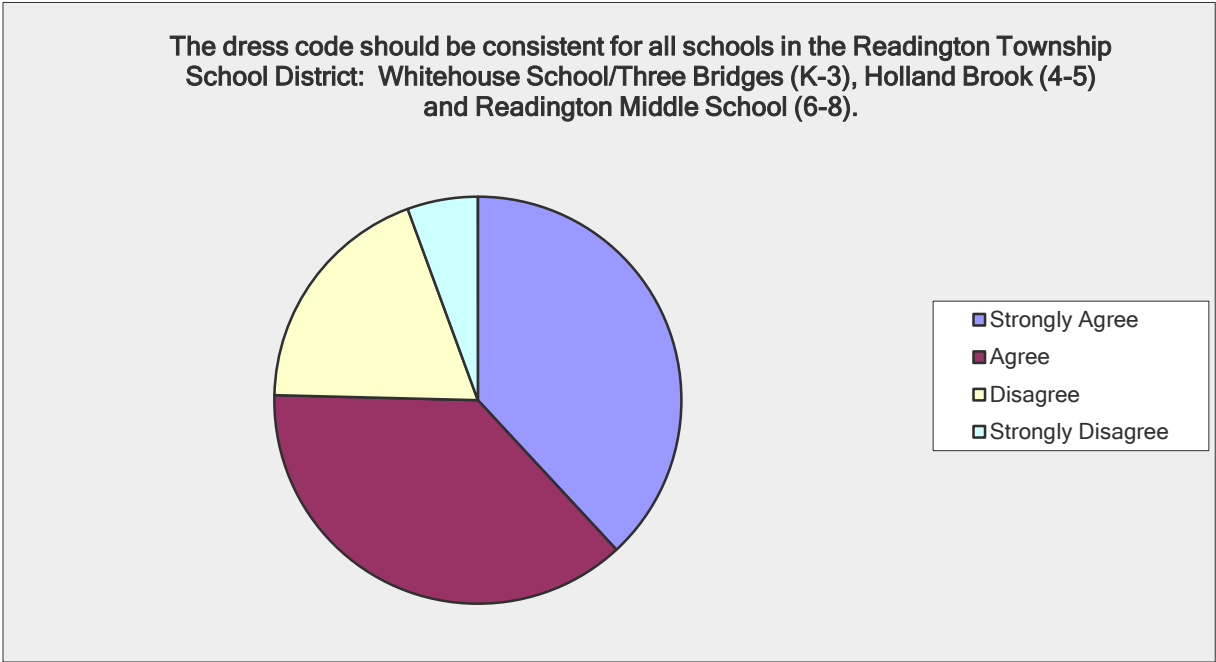
Select which group you represent.		
Answer Options	Response Percent	Response Count
Teacher	15.5%	61
Parent	72.6%	286
Student	5.1%	20
Community Member	5.6%	22
Administrator	1.3%	5
<i>answered question</i>		<b>394</b>
<i>skipped question</i>		<b>1</b>

Select which group you represent.



READINGTON TOWNSHIP SCHOOL DISTRICT DRESS CODE SURVEY

The dress code should be consistent for all schools in the Readington Township School District: Whitehouse School/Three Bridges (K-3), Holland Brook (4-5) and Readington		
Answer Options	Response Percent	Response Count
Strongly Agree	38.1%	150
Agree	37.3%	147
Disagree	19.0%	75
Strongly Disagree	5.6%	22
<i>answered question</i>		<b>394</b>
<i>skipped question</i>		<b>1</b>



READINGTON TOWNSHIP SCHOOL DISTRICT DRESS CODE SURVEY

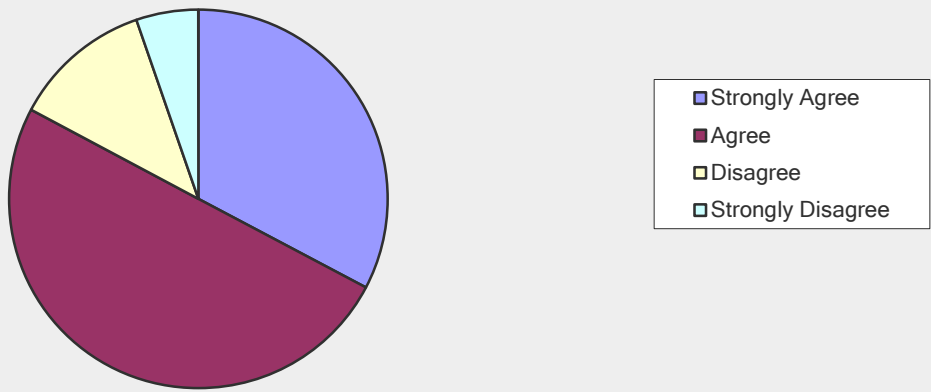
A thoughtfully constructed dress code policy will prevent behavioral issues from occurring at school.		
Answer Options	Response Percent	Response Count
Strongly Agree	28.4%	112
Agree	36.5%	144
Disagree	28.4%	112
Strongly Disagree	6.6%	26
Please explain:		120
answered question		394
skipped question		1



READINGTON TOWNSHIP SCHOOL DISTRICT DRESS CODE SURVEY

A school district dress code should allow for flexibility based on the activity and the location of the school event. For example, the dress code for a museum trip should be		
Answer Options	Response Percent	Response Count
Strongly Agree	32.7%	129
Agree	50.0%	197
Disagree	11.9%	47
Strongly Disagree	5.3%	21
Please explain:		87
<i>answered question</i>		<b>394</b>
<i>skipped question</i>		<b>1</b>

A school district dress code should allow for flexibility based on the activity and the location of the school event. For example, the dress code for a museum trip should be different than the dress code for a school dance.

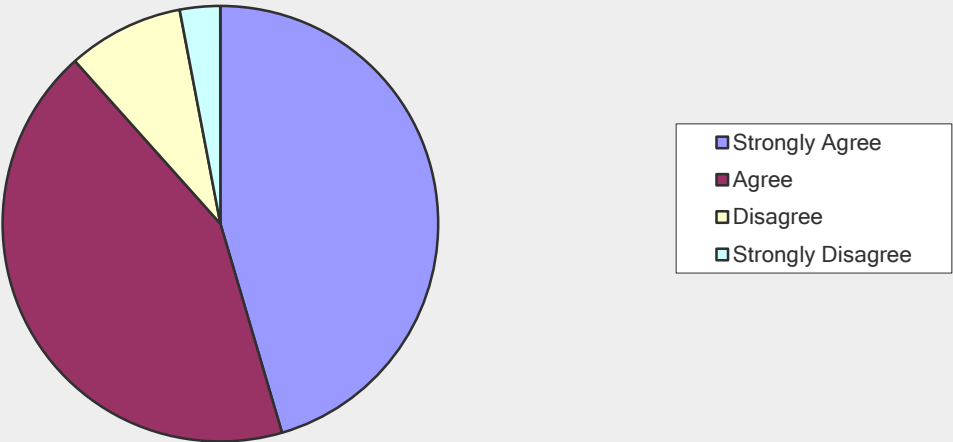


READINGTON TOWNSHIP SCHOOL DISTRICT DRESS CODE SURVEY

The school district dress code should be very specific with stated examples of items of apparel that are not allowed.

Answer Options	Response Percent	Response Count
Strongly Agree	45.4%	179
Agree	42.9%	169
Disagree	8.6%	34
Strongly Disagree	3.0%	12
<i>answered question</i>		<b>394</b>
<i>skipped question</i>		<b>1</b>

The school district dress code should be very specific with stated examples of items of apparel that are not allowed.

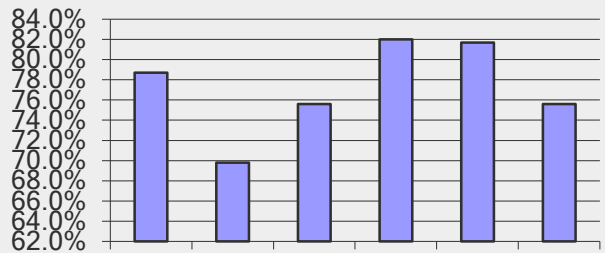


READINGTON TOWNSHIP SCHOOL DISTRICT DRESS CODE SURVEY

Upon which of the following criteria should the Dress Code restrictions be based? (Select as many as apply.)

Answer Options	Response Percent	Response Count
The restricted item presents a health of safety hazard to	78.7%	310
The restricted item interferes with school work (e.g.	69.8%	275
The restricted item creates disorder or causes disruption	75.6%	298
The restricted item is contrary to community values (e.g.	82.0%	323
The restricted item causes excessive wear or damage to	81.7%	322
The restricted item prevents pupils from achieving their	75.6%	298
Other (please specify)		93
answered question		394
skipped question		1

Upon which of the following criteria should the Dress Code restrictions be based? (Select as many as apply.)



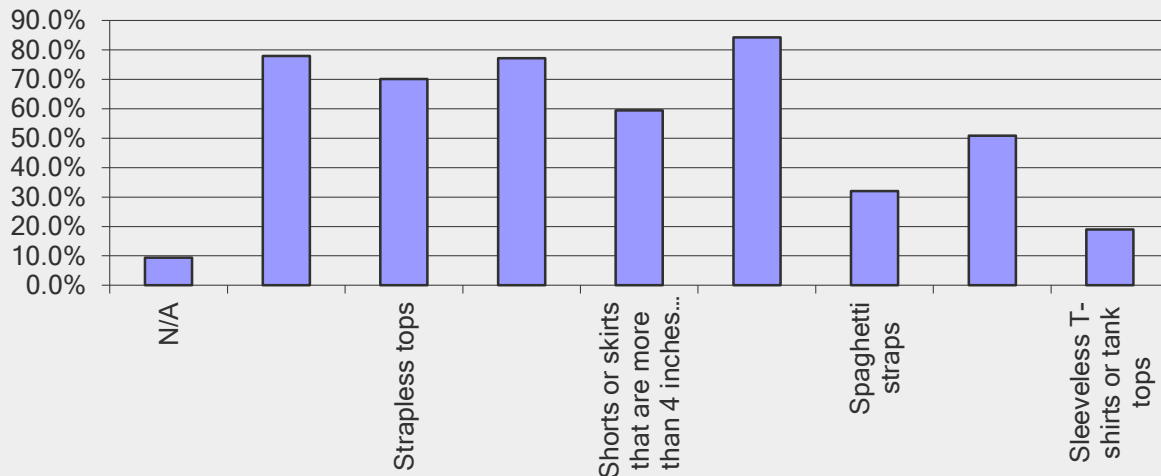
restricted movement (e.g. Tall hats)  
The restricted item is contrary to community values (e.g. clothing with offensive language or graphics)  
The restricted item causes excessive wear or damage to school property (e.g. clothing that is difficult to clean)  
The restricted item interferes with school work (e.g. clothing that is distracting)  
The restricted item presents a health of safety hazard to the school community (e.g. clothing that is flammable)  
The restricted item is contrary to the school's dress code policy (e.g. clothing that is not appropriate for school)  
The restricted item prevents pupils from achieving their academic potential (e.g. clothing that is uncomfortable)

## READINGTON TOWNSHIP SCHOOL DISTRICT DRESS CODE SURVEY

If you believe that a dress code should identify specific apparel items not allowed in school, which of the following clothing items do you feel should be prohibited? Check as

Answer Options	Response Percent	Response Count
N/A	9.4%	37
Sheer or see-through items	77.9%	307
Strapless tops	70.1%	276
Pants that fall too low on the hip	77.2%	304
Shorts or skirts that are more than 4 inches above the	59.4%	234
Tops that show a bare midriff	84.3%	332
Spaghetti straps	32.0%	126
Compression or bike shorts	50.8%	200
Sleeveless T-shirts or tank tops	19.0%	75
Other (please specify)		88
<b>answered question</b>		<b>394</b>
<b>skipped question</b>		<b>1</b>

If you believe that a dress code should identify specific apparel items not allowed in school, which of the following clothing items do you feel should be prohibited?  
Check as many as you wish:



READINGTON TOWNSHIP SCHOOL DISTRICT DRESS  
CODE SURVEY

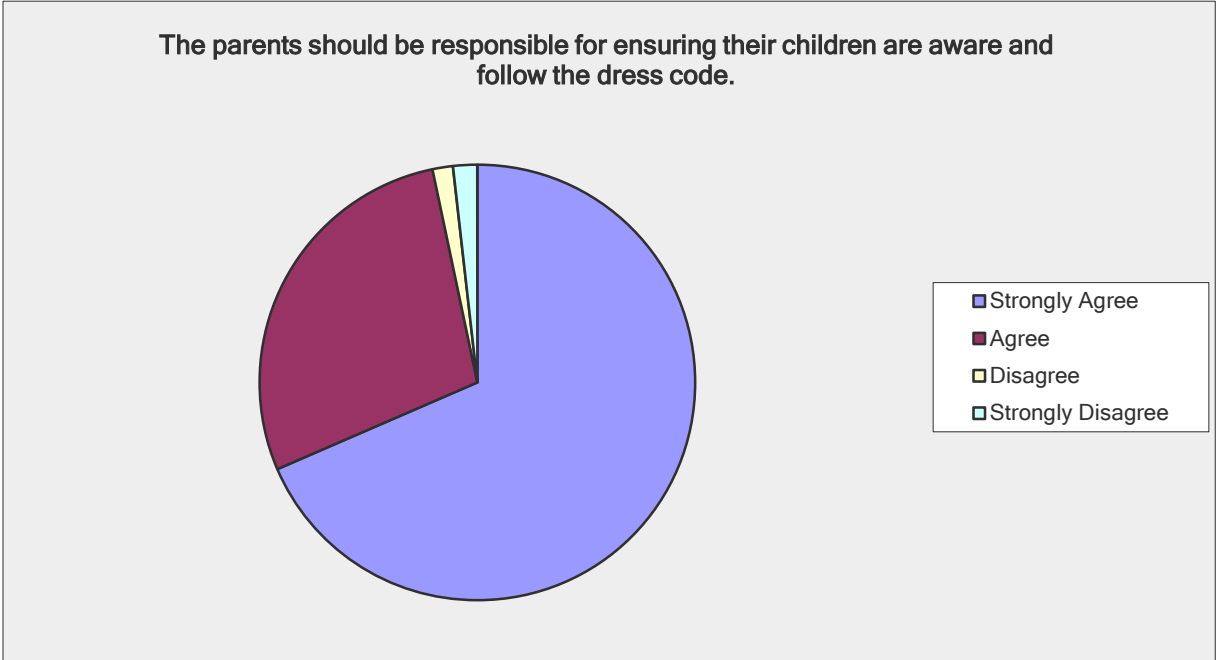
What items, if any, currently in the dress code do you believe should be removed? Why?

Answer Options	Response Count
	394
<i>answered question</i>	394
<i>skipped question</i>	1



READINGTON TOWNSHIP SCHOOL DISTRICT DRESS CODE SURVEY

The parents should be responsible for ensuring their children are aware and follow the dress code.		
Answer Options	Response Percent	Response Count
Strongly Agree	68.5%	270
Agree	28.2%	111
Disagree	1.5%	6
Strongly Disagree	1.8%	7
Comments:		72
<i>answered question</i>		<b>394</b>
<i>skipped question</i>		<b>1</b>



READINGTON TOWNSHIP SCHOOL DISTRICT DRESS CODE SURVEY

Should the Readington Township School District adopt a district-wide school uniform for all students? (For example, khaki pants and a navy top.)		
Answer Options	Response Percent	Response Count
Yes, strict uniform	10.7%	42
Yes, moderate uniform with variations	30.2%	119
No	59.1%	233
answered question		394
skipped question		1

