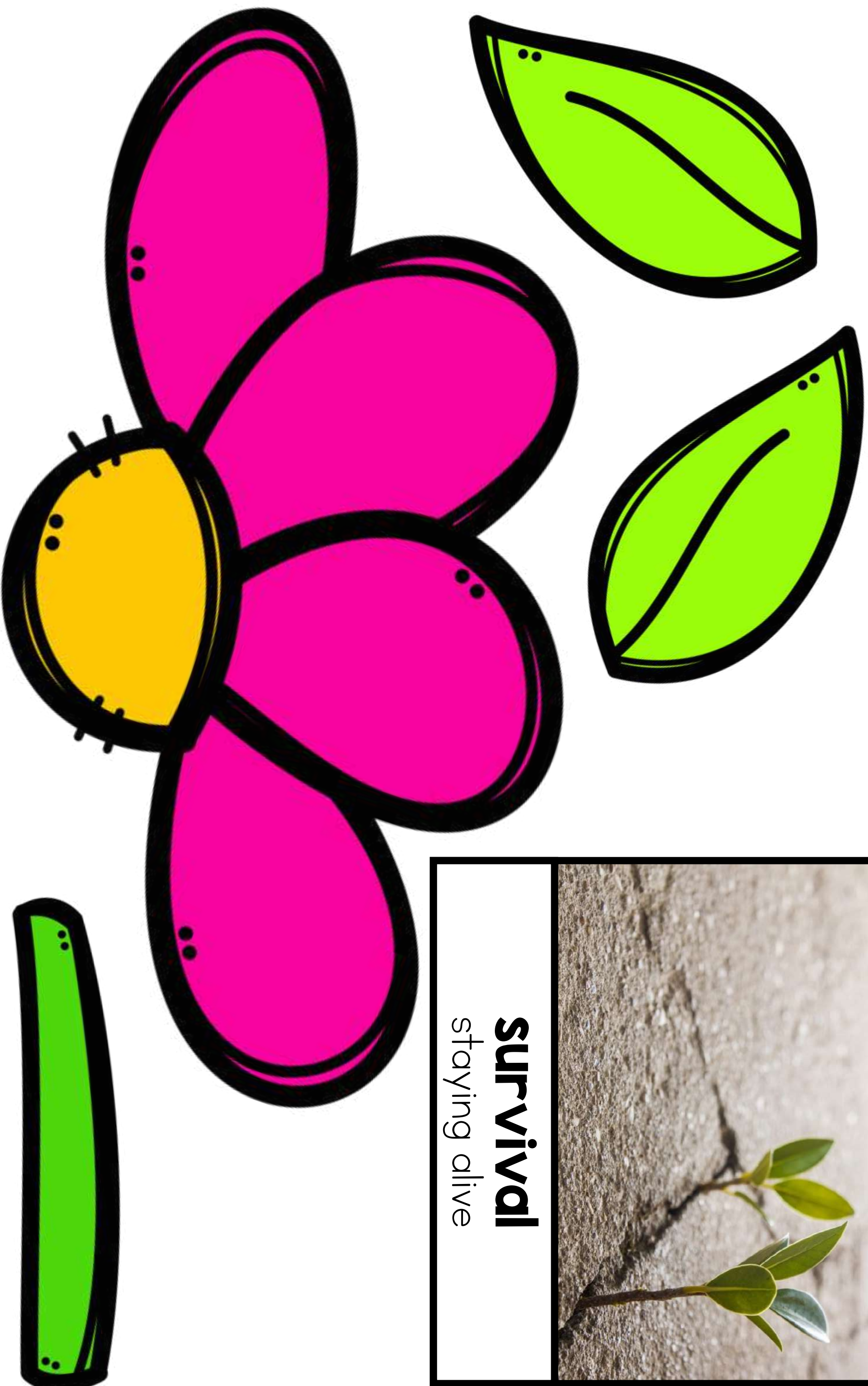
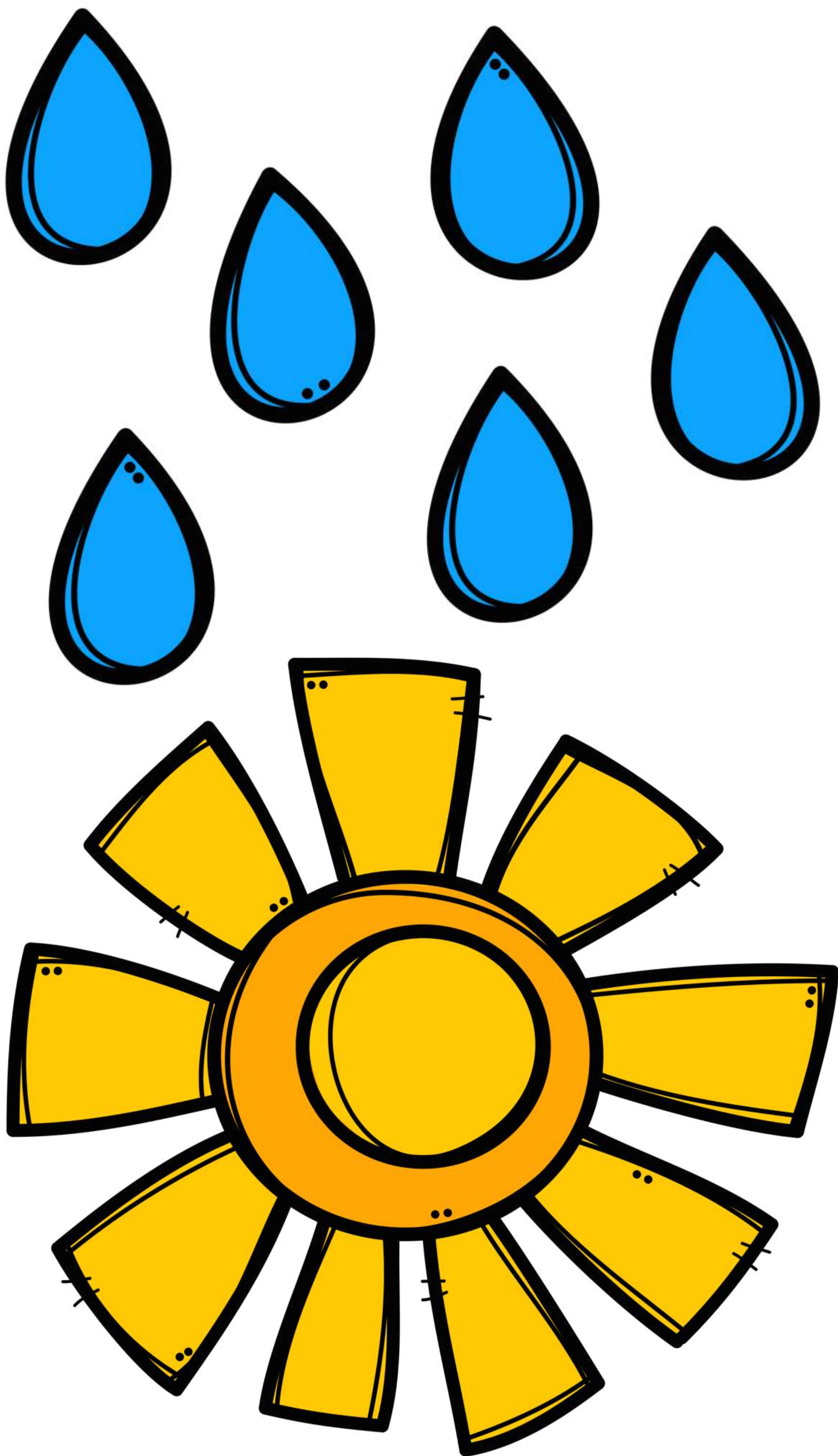
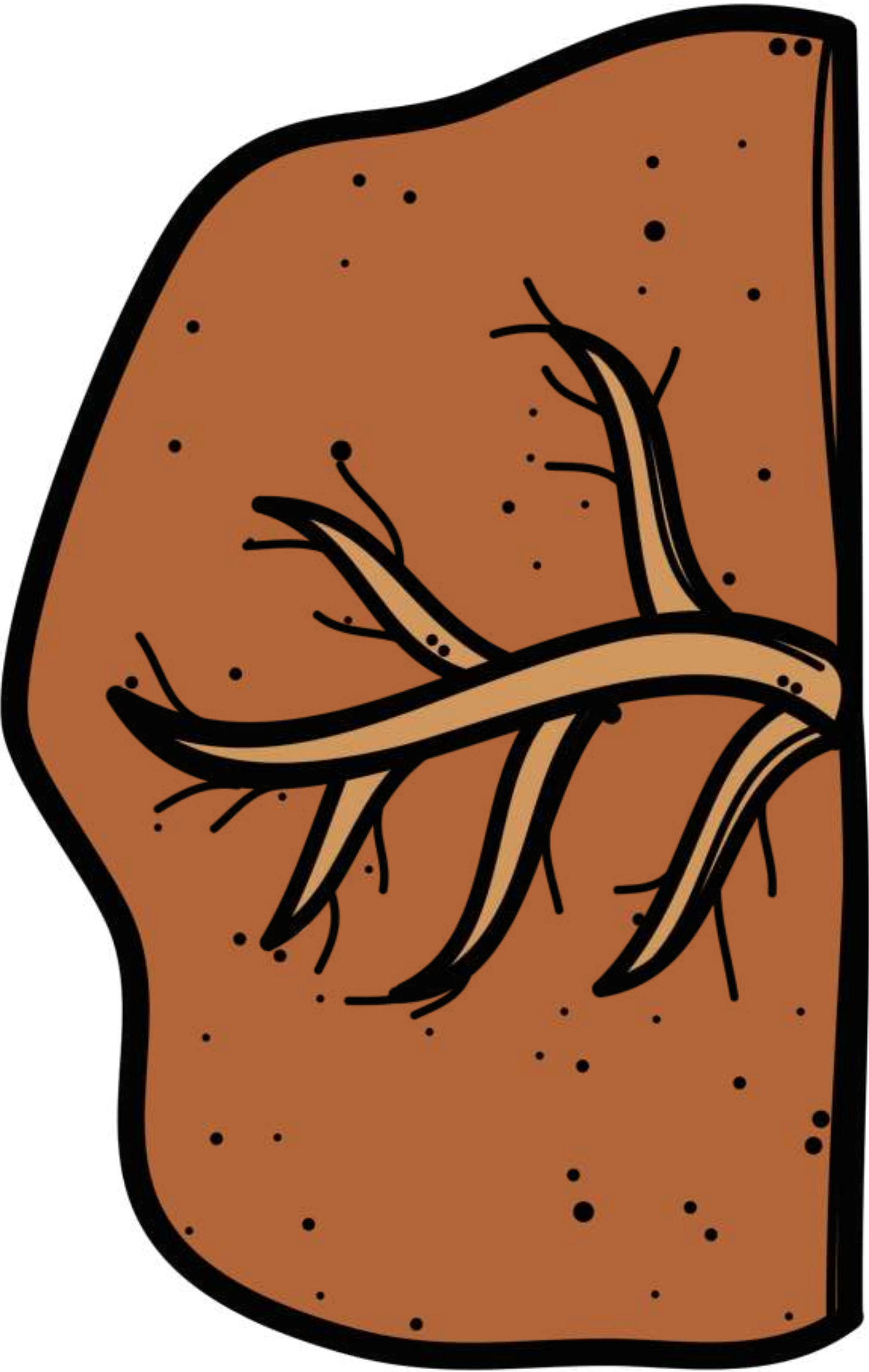




survival
staying alive







petals

the colored outer parts of a flower

leaves

part of the plant that makes food

stem

part of the plant that supports and carries nutrients to the plant

soil

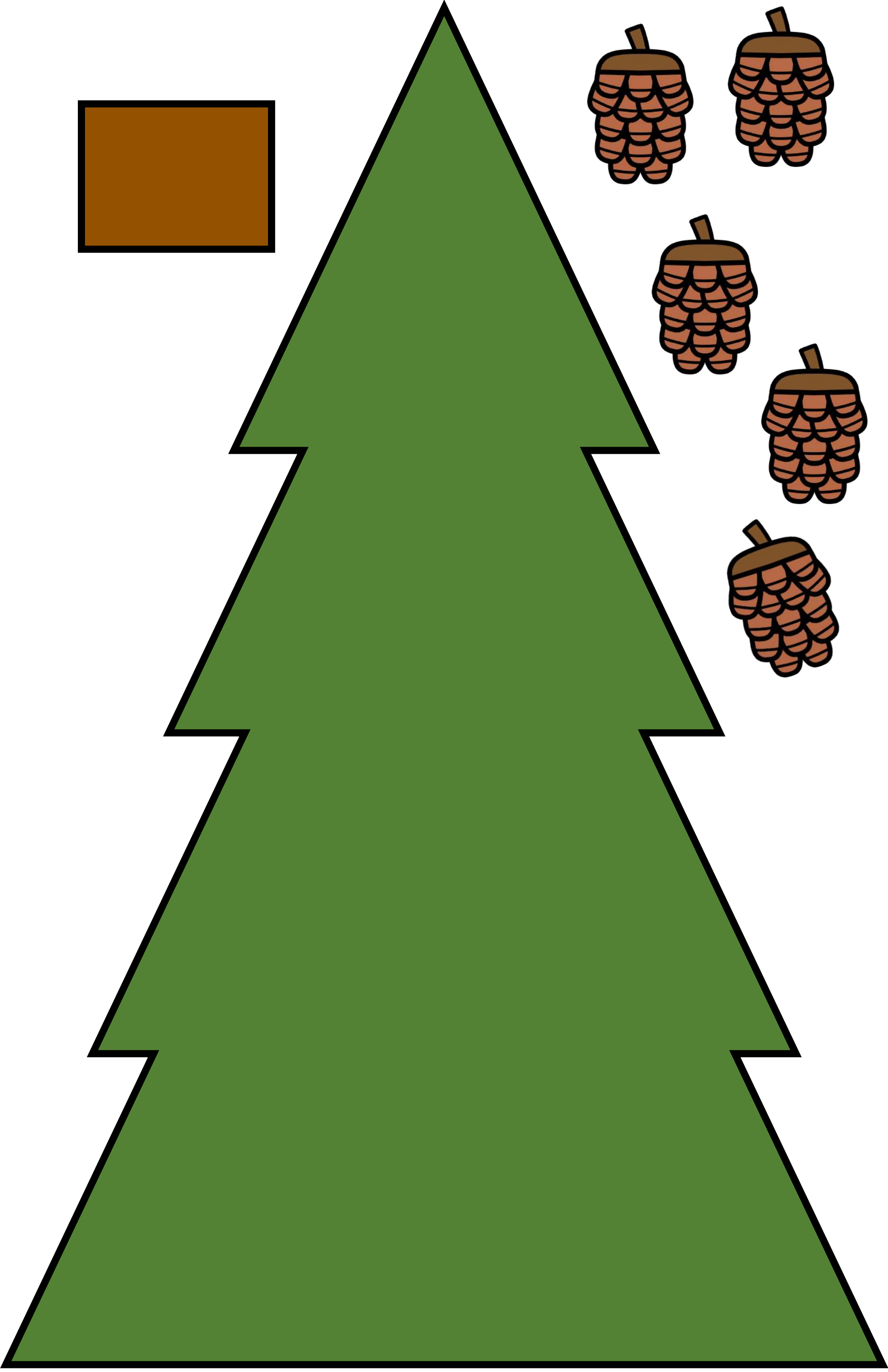
where plants are planted and grow

roots

part of a plant that keeps it in the ground and soaks up nutrients

seed

small protected part of a plant that grows into a new plant





deciduous

loses leaves every year

evergreen

has green leaves all year round

sheds

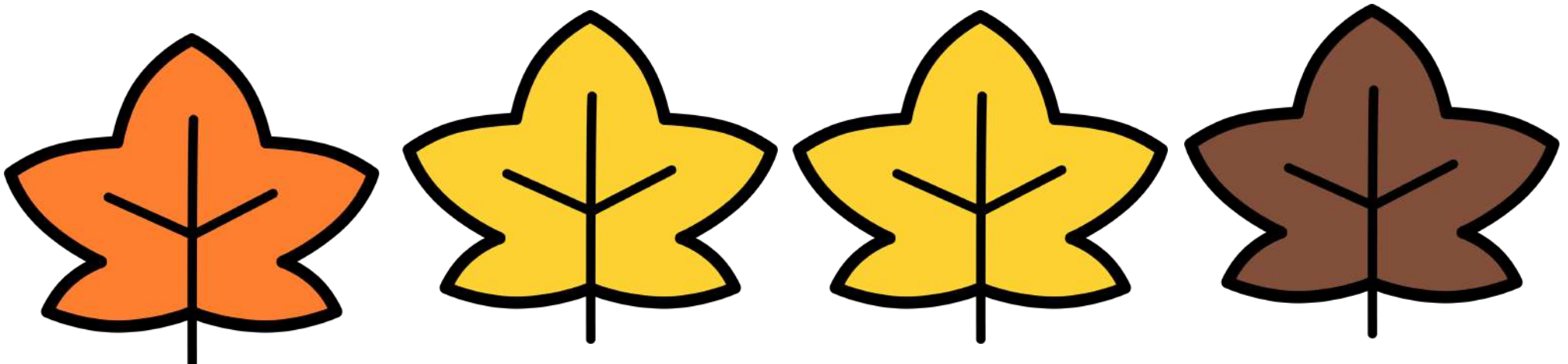
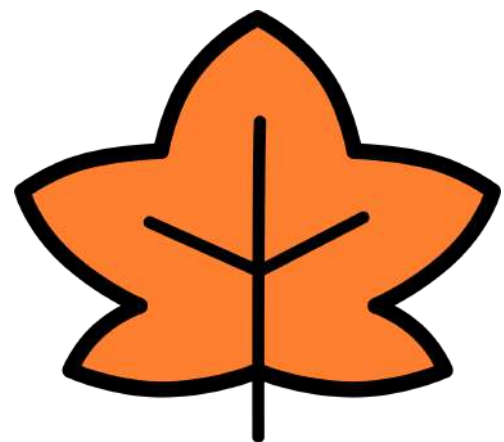
drops, loses, or separates from something

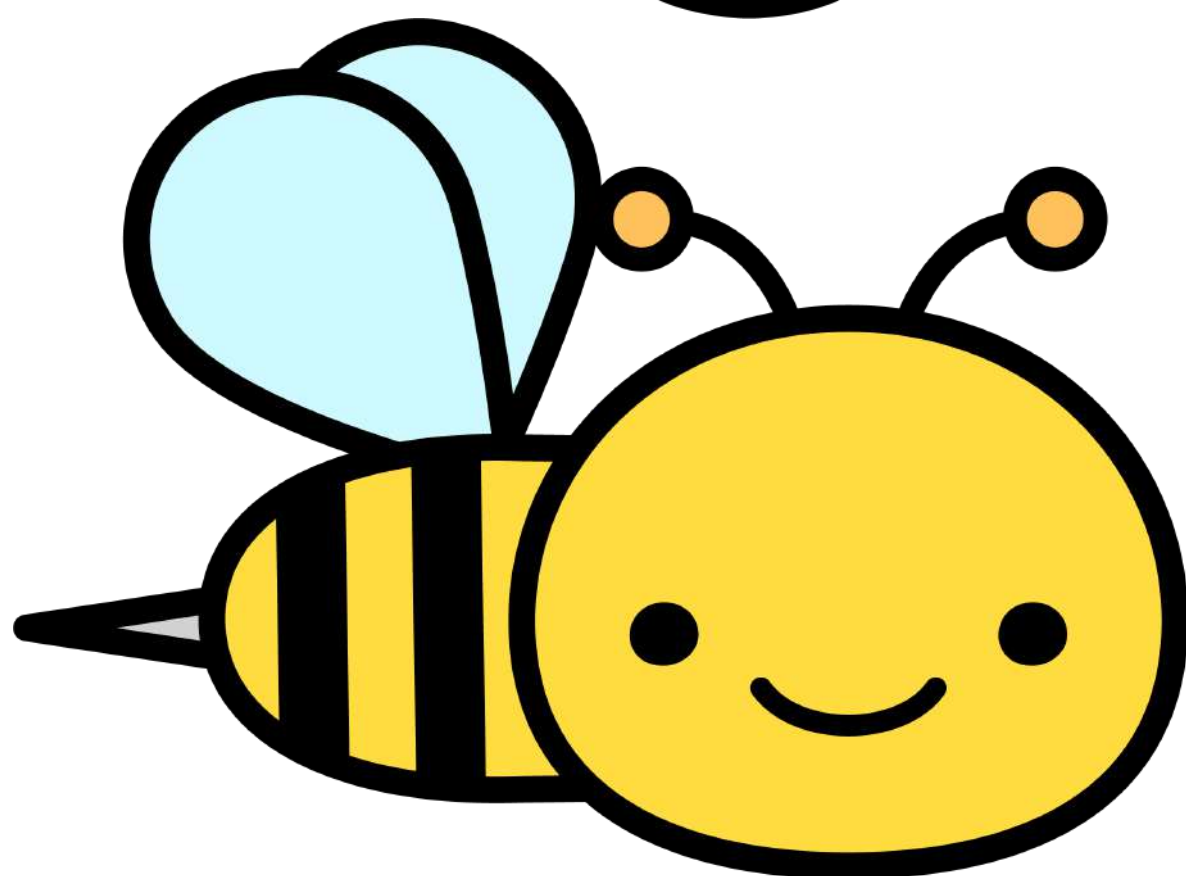
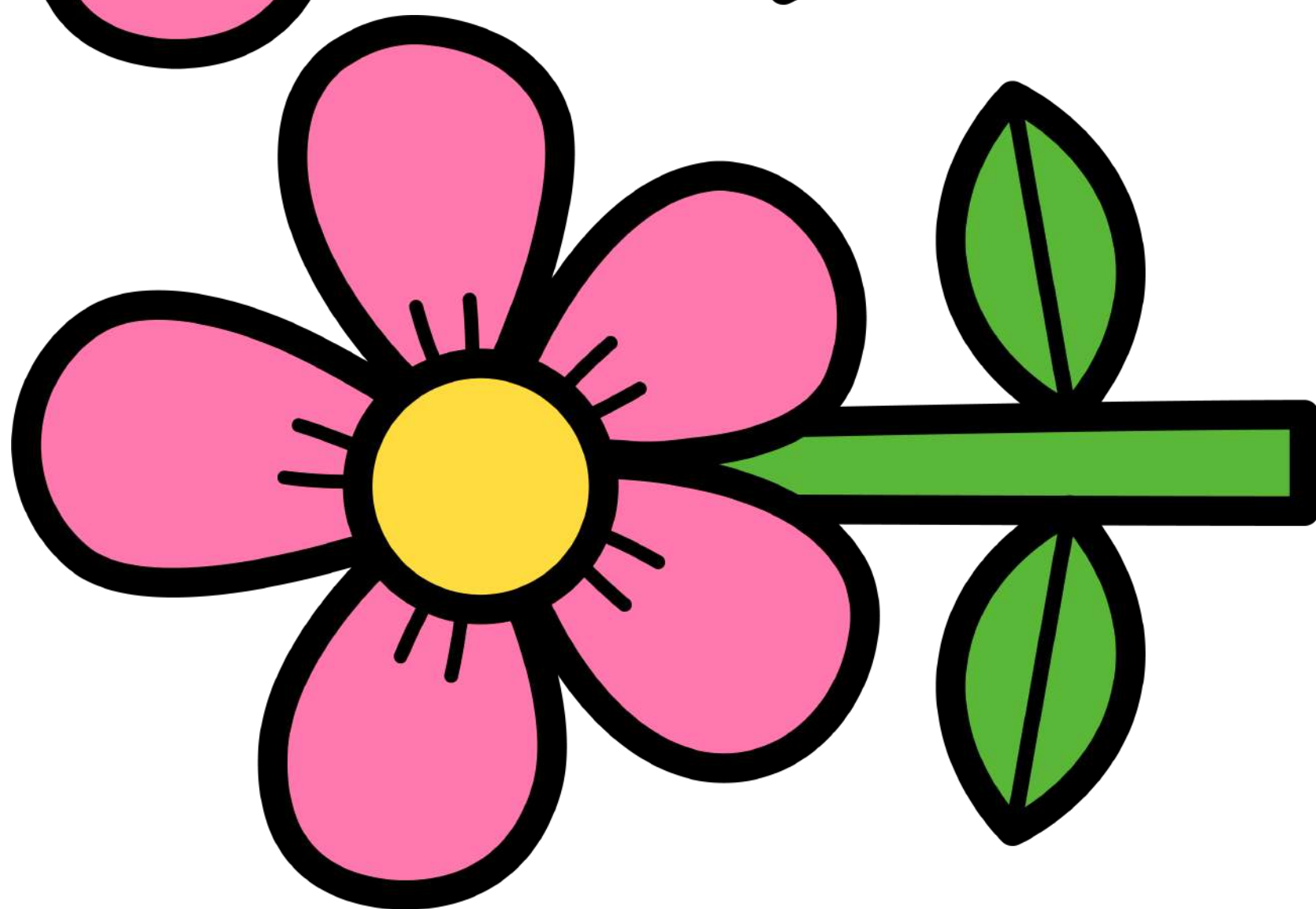
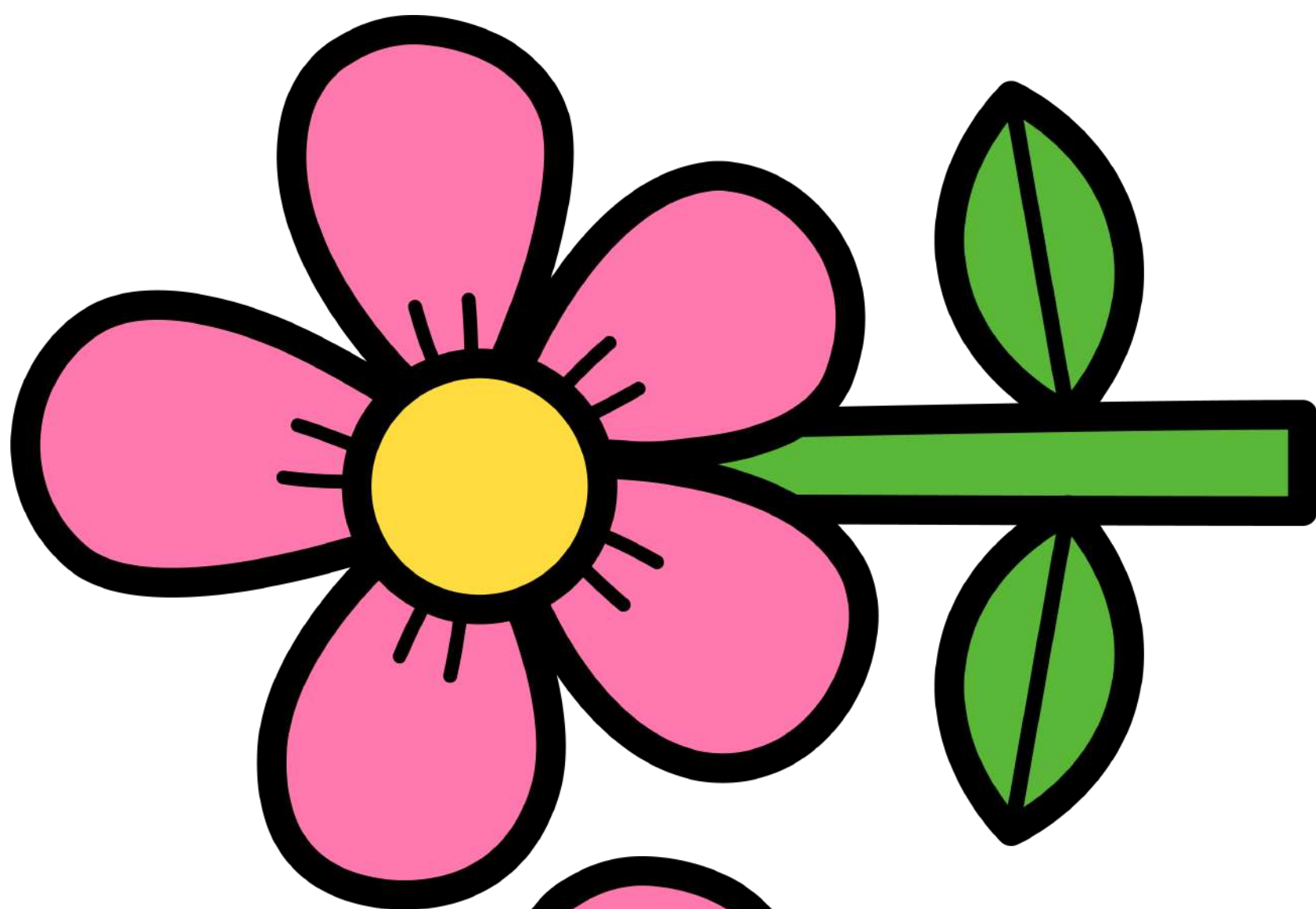
cones

the parts of the evergreen that contains seeds

bare

without any covering





pollination

when the pollen from two flowers mix and seeds are made



sapling

a young tree



crops

plants that people eat or use



provide
to supply



mature
to develop fully



gigantic
very large