



DIAGNOSTIC

10:00

# MATCH the MEANINGS

Base  
Word:

friend

Highlight the word in each sentence that contains the base word. Read the sentence. Determine which meaning best defines the word you underlined. Drag the letter to each box.

When I was a new student, Joan befriended me.

We found a stray goat that was very unfriendly, so we decided to stay away from him.

Brent tries to be nice to everyone in his class because he doesn't want anyone to feel friendless.

A. act as a friend to someone

B. having no friends

C. not friendly

A

B

C

# DAILY DOSE OF EDITING

#9

## 1 EDIT



Draw a line under each of the FIVE mistakes.

My brother just gradulated Fifth grade yesterday  
and he felt relived

## 2 FIX



Rewrite the sentence with the corrections made.

## 3 STRENGTHEN & ELABORATE !

Use part of the sentence, but make some changes. Use more detail to make it stronger.

# Meet the Heroes



Major Walter Reed, M.D.  
Director



Dr. Aristides Agramonte  
Autopsies



Dr. James Carroll  
Bacteriology



Dr. James Lazear  
Research and Diagnostics

Now that we have looked at how the text shows us Dr. Reed's character traits, it's time for you to turn your attention to these new members of the task force: Dr. Carroll, Dr. Lazear, and Dr. Agramonte. Choose one researcher to profile, then share your findings with your group members.

## Directions

1. Reread the passage and highlight five details that describe your assigned character (Dr. Agramonte–Blue, Dr. Lazear–Red, Dr. Carroll–Yellow).
2. Add a note to each detail, identifying the character and the character trait the detail describes. Ask yourself, “What does the detail reveal about who this person is?” In your note, write #character name #character trait. Example: #drreed #brave

**After you finish this you  
will go into your Note  
Catcher and make sure  
that it is up to date!!**

**10:00**



This question has two parts.

Part 1: What is the common characteristic that the author conveys about all of the team members?

A Bravery

B Humor

C Athleticism

D Cooperation

Part 2: Click on the sentence from the passage that best supports your answer to Part 1.

Everyone agreed. Work was scheduled to start the following morning. And, as they left the meeting, the four men must have known they were about to start a very dangerous project. People who had had yellow fever were immune. <sup>A</sup>They couldn't possibly get the disease again. <sup>B</sup>But none of the men on Reed's team had ever had a full-blown attack of yellow fever. <sup>C</sup>Reed had certainly never had the disease. Neither had Lazear or Carroll. Though there was a chance that the Cuban-born Agramonte might have had a very mild case as a small child, he was not definitely immune. <sup>D</sup>And all four doctors knew that by being on the fever-stricken island of Cuba, by coming close to sick patients, and by studying bacteria in the lab, they were running a serious risk of getting yellow fever.

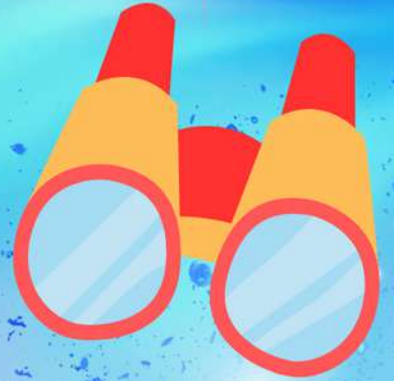


The background is a deep blue with a subtle, wavy pattern. A large, horizontal, pink brushstroke with irregular, feathered edges is centered in the image. The word "Inference" is written in a light blue, rounded, cursive-style font with a darker blue outline. The text is positioned within the pink brushstroke. Numerous small, bright white and light blue sparkles and starburst effects are scattered across the entire background, giving it a magical or ethereal feel.

Inference

# Inference:

An inference is a conclusion we draw based on evidence or information, even if it's not directly stated.





# How do we infer?

- Rely on Prior knowledge
- Check for context clues
- Think critically
- Analyze details
- Make connections

# Check out this video!

## Making inferences in informational texts



Khan Academy

# WATCH

What can you infer the cloud is feeling when he begins Pouring rain? Why does he feel that way?



Type answer here



# READ

**As the math class came to an end, Lily remained seated at her desk, her brow furrowed in frustration as she stared blankly at the equations on the worksheet in front of her. Despite the teacher's explanations and the supportive glances from her classmates, she couldn't seem to grasp the concepts. The tick of the clock on the wall seemed to echo the passing minutes, each one adding to her mounting anxiety. With a sigh, Lily shuffled her papers into her bag, the crumpled edges and smudged pencil marks a testament to her struggle. As she rose from her seat, her shoulders slumped with defeat, and she cast a longing glance at the door, dreading the inevitable confrontation with her lack of understanding.**



**What do the following lines suggest?**

**“stared blankly at the equations on the worksheet”**

Type answer here

**“her shoulders slumped with defeat”**

Type answer here

**“cast a longing glance at the door”**

Type answer here





# Games + Videos



QUIA

YouTube

GimKit

BLOOKEt

QUIZiZZ