



WOODLAND INTERMEDIATE SCHOOL

WEEKLY NOTES

December 16, 2020

- **Updated Quarantine Protocols:** NEW! The Kimberly Area School District has adopted the CDC and Wisconsin DHS guidelines for a 10 day return to school for students who develop NO symptoms of COVID-19 while in quarantine. The 7 day return guidelines are not being adopted at this time and are under review.
- Parent/teacher conferences for Woodland Intermediate students are coming on January 20th and 21st. Conferences will be held virtually this year. Please watch for more information on conference sign up after break.
- **Switching Learning Option:** The deadline for switching from online to in person or in person to online learning for the 3rd quarter is January 4th. Please click [here](#) to access the form to make a switch. Note that a form must be completed for each child and must be submitted by January 4th.
- **Woodland/Kimberly Wear Orders:** If you have purchased Woodland Wear from Fallen Graphix, thank you so much! When the items you ordered are completed, you will receive an email directly from Fallen Graphix letting you know that they are finished. Items can be picked up at the store at 718 Country Road KK anytime between 8:30 am until 5:00 pm, Monday through Friday.
- The next spirit day at Woodland School is on Wednesday, December 23rd and the theme is wear your favorite ugly sweater.
- Also on Wednesday, December 23rd, all Woodland Intermediate students will be released at 11:20 am.
- There will be no school on Thursday, December 24th through Friday, January 1st. Classes will resume on Monday, January 4th.
- Please visit the KASD website and check out the [Community Events](#) page for some great opportunities and activities for your family.

We Need You

We want our schools to remain open. To do that, we need your support. How can you help?

- ✓ Keep your child home if they are ill.
- ✓ Keep your child home if they have been tested for COVID until results are known.
- ✓ AVOID LARGE GATHERINGS.



The Quarter Note

From the Kimberly Band Boosters
Fall 2020

President: Shari Beck
Secretary: Wendy VanNuland
Treasurer: Karla Bauer
Publicity: Shawn Volk
Volunteer Coordinator: Shelly Sullivan
Facebook Coordinator: Jason Hodkiewicz
Uniform Team: Shari Beck, Kelly Romenesko



KIMBERLY BAND BOOSTERS, INC.

Next Meeting: TBD

Three KHS Musicians Participate In The WSMA State Honors Music Project

Each year since 1968, talented musician from grades 9 – 12 have been selected to participate in the prestigious Wisconsin State Honors Band, Orchestra, and Jazz ensemble. This past year, three Kimberly High School students had the tremendous privilege of being named to one of these ensembles. We asked Madeline Beck, Abigail Reuning, and Dan Guilette to tell us about their experiences 2020 WSMA State Honors Music Project.

Every student who auditions for a State Honors Ensembles has different reasons for doing so. Madeline and Abigail both were encouraged by their private music teachers to become involved. Madeline actually auditioned for two of the ensembles. “I was encouraged to audition by both my private flute teacher and my private saxophone teacher. After some consideration, I decided to audition with my flute for the band, and my saxophone for the jazz band.” But, as Daniel emphasized, there was also simply an innate desire to pursue music at the highest levels. “For me, music has always been the perfect complement to a rigorous education. While pursuing my academic studies at a high level, I decided that it was in my best interest to try out for the highest level high school ensemble in the state.”



Becoming a member of an elite, audition based group like the State Honors Ensembles requires a young musician to take a healthy risk and put themselves out on the line in a highly competitive and demanding format. As Abigail describes, “The audition process is difficult, but not impossible. For french horn players, you need to be able to play about 6 or 7 scales from memory. You also need to have a solo (I just played the solo I played for Solo Ensemble), and an etude (that WSMA gives you before the audition) ready. You will also have to sight-read two short pieces (about eight measures each), and on audition day, you'll have to play everything in front of a judge (kind of like how it is at Solo Ensemble).”

The Covid 19 pandemic clearly had a big impact on the overall State Honors experience. Traditionally, ensemble members would gather for a week in the summer to learn and rehearse their music and then come back together for a live concert performance in the fall. While the pandemic forced changes to the format, Abigail emphasized that the rehearsals were still valuable and demanding. “We met for four days and had around three rehearsals each day which were two hours long each. All of the rehearsals were virtual, so it wasn't the same as playing with a large ensemble. But, the practice we did was still fun and incredibly helpful.”

Another major benefit of the State Honors experience is the relationships that students develop with their fellow musicians, section leaders, and ensemble directors. According to Daniel, this aspect of the experience was still present, even if it was a little different. “Even though the Covid 19 pandemic diminished the regular spirit and activities regarding camp and the concert this year, I can still truly say that I made many remarkable relationships with my section coach, my conductor, my fellow percussionists, and even Grammy Award winner Sean Connors of Third Coast Percussion.”

So, what was the concert experience like this year? As Madeline explains, not quite like the traditional concert we are used to attending. “Prior to our virtual concert, we each were instructed to record ourselves playing while listening to our piece with one earbud in. Then, they put all of us together in one video to feature the night that would have been the actual concert. It was exciting to see the virtual concert come together, and I feel that they tried their best to make it as special as they could.” The performances of all of the groups can be found on the Wisconsin School Music Association website at <https://wsamamusic.org/hs-honors/concert-information/>.



In the end, even though the traditional State Honors experience was taken away from them by circumstances beyond their control, all three students expressed how enjoyable the experience was and how much they grew from their participation.

Abigail learned to be a better listener. “The biggest thing I've learned from this experience is probably to just listen to recordings of the music you're learning. Listening to each piece we played helped me understand the expression of each one in addition to the notes themselves. I find that once you know a piece it's much easier to start playing it since you know what to expect, and I felt that I understood each piece we played in State Honors Orchestra a lot better after I listened to each of them.”

Daniel learned what it was like to play in an ensemble that was entirely new to him. “The best part of my experience was meeting and playing with a string orchestra for the first time. As a percussionist who has never played with strings before, this was a new experience for me and one I will never forget.”

And, Madeline learned one of the most important lessons of all. “My biggest takeaway is that life can throw all of its twists and turns at you, but when people come together, a beautiful song can be created. There are many wonderful young musicians throughout Wisconsin that were brought together virtually in this experience.”

Interestingly enough, while all three musicians want music to be a central part of their life moving forward, none of the three intend to pursue music as a career. And, all three unequivocally encourage their fellow Kimberly musicians to give the State Honors Ensembles a shot. Madeline says, “My advice is to take the leap. I know many other musicians at our school who are definitely capable of making it into any of the 5 ensembles, so I encourage anyone to audition.” Abigail emphasizes that, even though the process is difficult, it is still worth it. “If you're thinking that you can't try it because the audition process is too hard, just take it step by step. Another word of advice though: make sure to try out early on. Even if you don't get in your first time, you'll know what to expect for next time, which will help you play even better next time.”

Finally, Daniel's message is simple: Have No Fear! “My message for all underclassmen is simple; do not be afraid to audition. No matter who you are, go for it. If you work hard, stay focused, pay attention to the details, and practice, I guarantee you that all the pieces will fall into place. This program is a serious accomplishment and a journey I will never forget, and I know that as a KHS student you are in an incredible position to be a part of this legacy too.”

As members of the Kimberly Band Boosters, we want to congratulate these three students on their amazing accomplishment. We also want to congratulate and acknowledge the Kimberly band directors that have worked so hard to make such an achievement possible. From Mrs. Carpenter, Ms Bolden, and Ms Shimek at the Intermediate Schools, through Mr. Hietpas and Mr. O' Donnell at the Middle School, and ending with Mr. Gall and Mr. Goethals at the High School, Kimberly has developed an incredible music program that is reflected in the achievement of these three students, but is felt by hundreds of more students every year. If you have a student in a band, make sure you say “Thanks” to these leaders, and make sure you give a hearty congratulations to Madeline, Abigail, and Daniel!

The Student Spotlight: The Woodwinds

KHS High School Wind Ensemble: Will Witter

What Instrument do you play?

Tenor saxophone

Who has been your biggest influence in music?

I have been influenced by my saxophone teacher, Chris Felts. I really want to be like him in his techniques and how he plays

What groups do you participate in at school?

Wind Ensemble and Jazz Ensemble 1

Describe any musical activities that you participate in outside of school?

I take saxophone lessons through Heid music.

What kind of music do you like to listen to? Who is your favorite artist?

I listen to a lot of different types of music. I really like gospel music and the Gaither Vocal Band.

What is your favorite band memory?

I remember playing The Entertainer for my sophomore year. It was a piece that my grandmother really used to like, and so it was really special for my mom to hear me playing that song since grandma loved it too.



KHS High School Symphonic Band: Sadey Havel

What Instrument do you play?

I play the clarinet mainly and can also play the bass clarinet.

Who has been your biggest influence in music?

My biggest influences in band have been all of the band directors I have had over the 8 years of participating in band. They have influenced me to stay in band over the years by creating an engaging and prosperous environment for me, as well as all other students, to grow as musicians. I have learned valuable lessons about the importance of self-discipline, time management, and commitment that I will have for a lifetime.

What groups do you participate in at school?

Playing the instrument I do, I have not been able to easily participate in additional bands outside the large band I play in.

What kind of music do you like to listen to? Who is your favorite artist?

I listen to a lot of genres including indie, r&b, and pop. My favorite artists include Frank Ocean, Tyler the Creator, IU, Paramore, Lana del Rey, Clairo, BTS, Joji, Kehlani, Melanie Martinez, and Blackpink.

What is your favorite band memory?

I think, collectively, my favorite memories have been made playing at football games and playing at the state football game. Those memories make me realize how much I miss participating in such activities and how much I miss the normalcy of being involved in band every day.



KHS High School Concert Band: Carson Medden

What Instrument do you play?

I play Alto Saxophone for the school band, and play the guitar and drums as secondary instruments.

Who has been your biggest influence in music?

My first guitar instructor, Mr. Pickert, has been my biggest influence. He was very experienced in the industry, and taught me all the proper techniques to jumpstart my journey on the guitar. He also went out of his way to give me opportunities at a very young age, like recording a selection of songs at a local recording studio. He lives in upstate New York, but to this day, we are still in touch.



What groups do you participate in at school?

In band, I am in the Jazz Lab band. I am also involved in athletics, playing baseball, basketball, and football.

Describe any musical activities that you participate in outside of school?

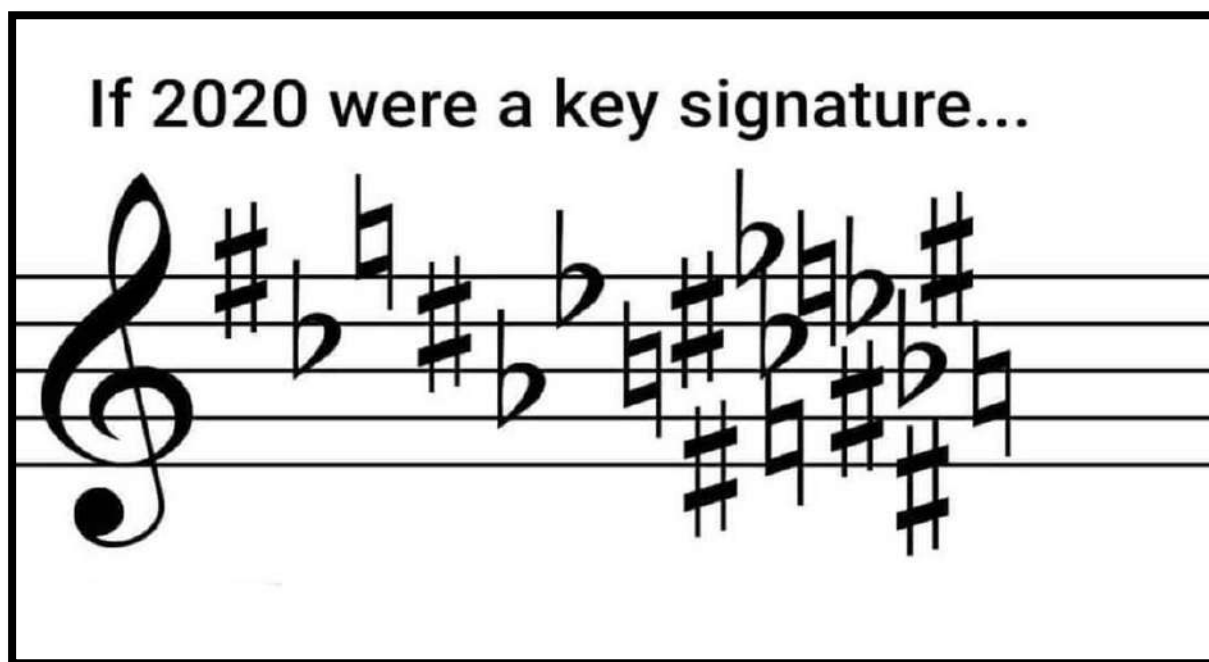
I am in a band with a few KHS Sophomores, Calvin Mendoza and Noah Orioles. We get together on weekends at my house to play rock.

What kind of music do you like to listen to? Who is your favorite artist?

My first favorite genre was classic rock, which my dad introduced me to. Bands like Led Zeppelin and Guns n' Roses were very important in my development on the guitar. The Beatles have always been among my favorite bands as well. In recent years, I have attempted to widen my musical variety. I found myself fascinated by the technical ability of progressive rock drummers such as Neil Peart, Danny Carey, and Carter Beauford, all of which are among my favorites. Recently, The Police, Radiohead, and Steely Dan have been my favorite rock groups. My goal in the future is to begin to educate myself on jazz and how to play it on different instruments. I thought that Jazz Lab band would be a good place to start.

What is your favorite band memory?

My favorite band memory was last year at the band night football game. It was a great time playing with the pep band, and we got to eat so many great treats afterwards.



Mapleview 6th Grade Band: Cecilia Xiong

What Instrument do you play?

Flute

Who has been your biggest influence in music?

My big brother, Aymon, because he told me I should join band. And it's fun.
I like it.

What groups do you participate in at school?

I am not participating in any groups this year.

Describe any musical activities that you participate in outside of school?

I am not participating in any musical activities this year.

What kind of music do you like to listen to? Who is your favorite artist?

I listen to a lot of music.

What is your favorite band memory?

I don't have any favorite memories. But I like the jokes that Mrs. Bolden makes!



Mapleview 5th Grade Band: Emma Criter

What Instrument do you play?

I play the Alto Saxophone and the Piano.

Who has been your biggest influence in music?

My brother played the saxophone and whenever he would practice, it would always sound so beautiful.

What groups do you participate in at school?

I am not in any clubs right now, but if I were, it would be the art club.

Describe any musical activities that you participate in outside of school?

I am not currently in any musical activities outside of school.

What kind of music do you like to listen to? Who is your favorite artist?

I listen to pop music, and my favorite artists are Leslie Odom Jr. and Anthony Ramos.

What is your favorite band memory?

I am most proud of playing 100 minutes every week so far!



JRG 8th Grade Band: Caroline Van Thiel

What Instrument do you play?

I play the flute.

Who has been your biggest influence in music?

My biggest influence is the whole band. Ever since 5th grade I've loved hearing the whole band all come together and play as a group. I think it's cool how we're split into different classes and practice in slightly different ways, but we're still able to come together as a team and sound amazing. Sometimes in class, after we nailed a run-through of a song, I can't help but smile at how stunning we sound as a band.

What kind of music do you like to listen to? Who is your favorite artist?

I like to listen to current pop. I don't have one favorite artist, but a couple of my faves are Imagine Dragons and Tate McRae.

What is your favorite band memory?

It was pretty much most of 5th grade; I tended to sit in the weirdest ways with my legs under me (it was always an accident, I swear) and it drove Mrs. Carpenter CRAZY! She was constantly correcting me. There were a few times when she would just stare at me until I realized and sat normally like a normal person.



JRG 7th Grade Band: Aynslea Portz

What Instrument do you play?

I play the flute!

Who has been your biggest influence in music?

In the fourth grade, they offered band (or at least in Colorado they did) and my mom encouraged me to try something new. I remember when they gathered us in the cafeteria to pick out an instrument and I was torn between the flute and the clarinet. My mom had just said go with whatever speaks to you and whichever you think you will love playing. I am very glad that I picked the flute that day because I DO love it and have been hooked ever since.

What groups do you participate in at school?

I attend the virtual coding club after school.

Describe any musical activities that you participate in outside of school?

I go to private lessons every Tuesday at my instructor, Carol Smith's, house. Twice a year, she has all of her students come together and perform at a recital.

What kind of music do you like to listen to? Who is your favorite artist?

I usually listen to pop music, but I don't have a favorite artist in particular.

What is your favorite band memory?

I remember the in the fifth grade when I was in the sixth grade band, I would always have to go into a separate practice room (the diagonal one for any who went to Woodland) and challenged myself to do different things (sometimes silly) while practicing my songs.



Woodland 5th Grade Band: Connor Vandervelden

What Instrument do you play?

Clarinet

Who has been your biggest influence in music?

People on YouTube

What groups do you participate in at school?

Band

Describe any musical activities that you participate in outside of school?

I practice 20 min a day.

What kind of music do you like to listen to? Who is your favorite artist?

Pop

What is your favorite band memory?

Veterans Day



Woodland 6th Grade Band: Malayna Dietrich

What Instrument do you play?

I play the clarinet.

Who has been your biggest influence in music?

Well, I don't really have one, but I like to listen to those who can play really hard songs. So maybe my band teacher, Ms. Shimek, and also my sister because she is really good at singing.

What groups do you participate in at school?

This year only band because intramurals aren't going on this year. But last year, I was in volleyball, basketball, and cross country.

Describe any musical activities that you participate in outside of school?

I just play for my family for holidays and things like that.

What kind of music do you like to listen to? Who is your favorite artist?

I like to listen to country music and also faster, upbeat songs. My favorite artist is probably Lewis Capaldi.

What is your favorite band memory?

My favorite band memory that I had was this year when I said that I wanted to play Let It Snow. Also a saxophone player wanted to put a trombone mouthpiece on his instrument. Then when the music started playing, he started playing. I didn't play a single note in that song because I couldn't stop laughing at him. Also when my band teacher said to repeat a song and nobody heard her except me, so then I was the only one playing and it was really awkward!!



SPECIAL NOTES

**Senior band members, the
Kimberly Band Booster
Scholarship is now
available in student
services!**



We Need Your Help!



**The Kimberly Band
Boosters are looking for
one more Uniform
Coordinator to join our
team !**

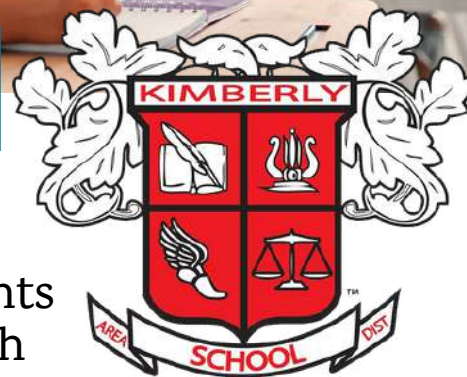


OUR STUDENTS NEED YOU





SEEKING TEMPORARY STAFF

substitute teachers • support staff • entry level

Kimberly Area School District (KASD) is seeking support from our community. Help us keep students in the classroom and our schools open. Find which opportunity is best for you!



— *Explore the possibilities* —

POSITION	 EXPERIENCE LEVEL	 PAY	 FLEXIBILITY/ SEASONAL	 IMMEDIATE OPENINGS
Substitute Teacher	Associates or Bachelor's	\$115/PER DAY	✓	✓
Classroom Facilitator	High School Diploma	\$90/PER DAY	✓	✓
Substitute Paraprofessional	High School Diploma	\$9.50/PER HOUR	✓	✓

Do you enjoy working with children while maintaining a flexible work schedule? Are you home for the holidays and looking for temporary work? Have you considered becoming a classroom facilitator, substitute paraprofessional or even a substitute teacher? Learn more at www.kimberly.k12.wi.us/careers



CLEAN MASKS ARE CRUCIAL!

Cloth masks are designed to be washed after every use. They should not be worn multiple days in a row unless washed in between uses. Here's how to care for your cloth mask:

Washing:

Wash masks in a washing machine, using the warmest setting recommended for the fabric. Use your usual laundry detergent.

OR

Wash masks thoroughly by hand, using soap or laundry detergent and warm/hot water.

Drying:

Dry masks in a dryer, using the warmest setting recommended for the fabric.

OR

Allow the mask to air dry completely.

WHEN TO STAY HOME FROM SCHOOL

Keep your child home when:

- ✓ They are sick (please see [student illness guide](#) and when to get tested)
- ✓ They are diagnosed with COVID-19
- ✓ They are being tested for COVID-19
- ✓ They are a [close contact](#) of someone with COVID-19



Frequently Asked Questions:

Do I keep my child home if someone in my household is being tested for COVID-19?

A: Send your child to school if your child is symptom free.

OR

A: Keep your child home if your child has COVID-like symptoms.

Do I keep my child home from school if someone in my household is a close contact of a confirmed case of COVID-19?

A: Send your child to school if the household member who is the close contact is symptom free.

OR

A: Keep your child home if the household member who is the close contact has COVID-like symptoms. (The household member who is the close contact is considered a probable case of COVID if he/she is showing symptoms while awaiting test results and everyone in your household at that point is considered a close contact and will need to quarantine.)

**For additional frequently asked questions please visit,
www.kimberly.k12.wi.us/updates/frequently-asked-questions**

STUDENT ILLNESS GUIDE AND WHEN TO GET TESTED

People with the below symptoms or combination of symptoms may have COVID-19. The table below outlines WI-DHS recommendations of who should receive COVID-19 testing in Wisconsin. If you have these symptoms, **stay home, call your school office and get tested.**

Box A (any one symptom present)

- ☐ Cough (above baseline) ☐ Shortness of breath or difficulty breathing ☐ New loss of taste or smell

OR

Box B (any two symptoms present)

- ☐ Congestion or runny nose (above baseline) ☐ Chills or fever (100.4) ☐ Nausea or vomiting
☐ Diarrhea ☐ Fatigue ☐ Muscle or body aches ☐ Sore throat (above baseline)

**If you choose not to get tested, you must remain home until at least 10 days have passed since symptom onset AND at least 24 hours have passed since resolution of fever without use of medicine AND other symptoms have improved.*

OR

Box C

- ☐ I am a close contact of someone with COVID-19

WI-DHS recommends getting tested if you are a close contact. If you test negative during your quarantine period, you will still need to complete your full 14-day quarantine before it is safe to go back to school or be around others

For all other illnesses, follow typical school illness protocol by staying home, calling the school office and once symptoms have improved and your child is fever free for 24 hours they may return.

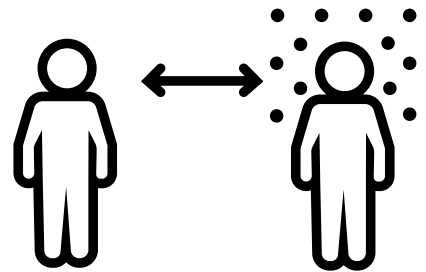
***For information on awaiting test results and quarantining please go to,
www.kimberly.k12.wi.us/updates/covid-19-protocols.***

CLOSE CONTACT GUIDE

What does it mean to be a close contact of someone with COVID-19?

You are a “close contact” if any of the following situations happened while you spent time with the person with COVID-19, even if they didn’t have symptoms:

- ✓ Had direct physical contact with the person (for example, a hug, kiss, or handshake)
- ✓ Were within 6 feet of the person for more than 15 minutes
- ✓ Had contact with the person’s respiratory secretions (for example, coughed or sneezed on; contact with dirty tissue; shared a drinking glass, food, towels, or other personal items)
- ✓ Live with the person or stayed overnight for at least one night in a household with the person



EXAMPLE

Your child was playing outside with a neighborhood friend when he drank from the friend’s water bottle without thinking. The following day, the friend developed symptoms and subsequently tested positive for COVID-19. **Your child is a close contact.**

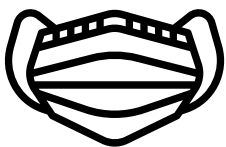
EXAMPLE

I went out to eat with a friend yesterday and we were within 6 feet of each other for 30 minutes. The following day my friend tested positive for COVID-19. I am now a close contact. What about my child? **Your child is NOT a close contact** as your child did not spend time with your friend.

If you had contact with someone who has been diagnosed with COVID-19 you may be at risk of infection. Follow these recommendations for 14 days since your last close contact with someone with COVID-19. It is important to **self-quarantine and self-monitor** to protect yourself, your family, and your community.



As a close contact, what does it mean to quarantine?



- Stay home
- Avoid travel
- Go out only if absolutely necessary
- Postpone all non-essential medical appointments until your quarantine is over
- Do not use public transportation, ride-sharing, or taxis
- Wear a face cover when you are around others

See Next Steps: close contacts of someone with COVID-19

KIMBERLY AREA SCHOOL DISTRICT

PARENT CALENDAR

2021-2022

September 2021

M	T	W	TH	F
		1	2	3
NS	7	8	9	10
13	14	15	16	17
20	21	22	23	AM
27	28	29	30	

October 2021

M	T	W	TH	F
				1
4	5	HS	7	E2
11	12	13	14	15
18	19	20	21	22
25	26	27	NS	NS

November 2021

M	T	W	TH	F
1	2	3	4	Q
8	9	10	E2&C	12
E2&C	16	MS	MS	AM
22	23	24	NS	NS
29	30			

December 2021

M	T	W	TH	F
		1	2	E2
6	7	8	9	10
13	14	15	16	17
20	21	22	NS	NS
NS	NS	NS	NS	NS

January 2022

M	T	W	TH	F
3	4	5	6	7
10	11	12	13	E2
17	18	I	I	Q/AM
24	25	26	27	28
31				

February 2022

M	T	W	TH	F
	1	2	3	4
7	8	9	NS	NS
14	15	HS	17	E2
21	22	23	24	25
28				

March 2022

M	T	W	TH	F
	1	2	3	E2
7	8	9	MS	AM
14	15	16	17	18
21	22	23	24	25
Q	29	30	31	

April 2022

M	T	W	TH	F
				E2
4	5	6	7	8
11	12	13	14	NS
NS	NS	20	21	22
25	26	27	28	29

May 2022

M	T	W	TH	F
2	3	4	5	6
9	10	11	12	AM
16	17	18	19	20
23	24	25	26	EN
NS	31			

June 2022

M	T	W	TH	F
		1	2	*SNOW DAY MAKE-UP

*If needed, snow day make-up will be on Friday, June 3rd

NS No School

AM AM classes only (exception: No school for 4K) KHS dismissed at 11:31am, JRG & Intermediate dismissed at 11:20am, Elementary dismissed at 12:00pm

E2 Elementary Early Release - Elementary dismissed at 2:00pm (Exception: 4K morning classes 8:45am - 10:45am, afternoon classes 11:45am - 1:45pm)

EN Elementary Noon Release - All Elementary students dismissed at 12:00pm (exception: No school for 4K)

HS High School Parent/Teacher Conferences - KHS students dismissed at 2:00pm

MS Middle School Parent/Teacher Conferences - JRG students dismissed at 2:00pm except on November 18th - students will have a full day of school

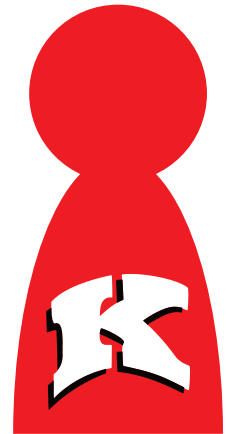
I Intermediate School Parent/Teacher Conferences - Intermediate students dismissed at 2:00pm

E2&C 4K-4th Gr. Parent Teacher Conferences; No school for 4K; Grades 5K-4th Grades dismissed at 2:00pm

Q End of quarter

IF YOU  **SEE
SOMETHING**

**SAY
SOMETHING**



IF YOU
See something
Read something
Hear something
Know something
Then you should
SAY SOMETHING



TELL YOUR
Parent
Teacher
Principal
School Counselor
School Secretary
Librarian
Any Trusted Adult
***Or Call 911 for
Emergencies***

We are encouraging school and community members to become the eyes and ears of the Kimberly Area School District in order to provide information that keeps our students, staff and schools safe.

It sometimes can be difficult to define:

- Take your time to pay attention to your surroundings and to the behaviors of others around you.
- Know what suspicious or concerning behaviors look like.
- Does the activity look strange to you?
- Are you worried someone you know is thinking about hurting others or themselves?

Report it, don't just repeat it.



**Kimberly Area
School District**

*See Something, Say Something® is modeled after
the Department of Homeland Security's program.*

rev. 11/6/19

INFORMATION FOR PARENTS



IF YOUR FAMILY LIVES IN ANY OF THE FOLLOWING SITUATIONS:

In a shelter



In a motel or campground due to the lack of an alternative adequate accommodation



In a car, park, abandoned building, or bus or train station



Doubled up with other people due to loss of housing or economic hardship

Your school-age children may qualify for certain rights and protections under the federal McKinney-Vento Act.

Your eligible children have the right to:

- Receive a free, appropriate public education.
 - Enroll in school immediately, even if lacking documents normally required for enrollment.
 - Enroll in school and attend classes while the school gathers needed documents.
 - Enroll in the local school; or continue attending their school of origin (the school they attended when permanently housed or the school in which they were last enrolled), if that is your preference.
- * If the school district believes that the school you select is not in the best interest of your children, then the district must provide you with a written explanation of its position and inform you of your right to appeal its decision.
- Receive transportation to and from the school of origin, if you request this.
 - Receive educational services comparable to those provided to other students, according to your children's needs.

If you believe your children may be eligible, contact the local liaison to find out what services and supports may be available. There also may be supports available for your preschool-age children.



Local Liaison

KASD Homeless Liaison
Rob DeLain
920.788.7905

State Coordinator

WI State Coordinator
Kristine Nadolski
608.267.7338

If you need further assistance with your children's educational needs,
contact the National Center for Homeless Education:
1-800-308-2145 * homeless@serve.org * <http://nche.ed.gov>