

Dealing with Low Light Situations

...

Some possible solutions

Empty version

<https://docs.google.com/presentation/d/1wmGNLMGE7iiJhikQiuLyhLBQnE9n30X-v4t5zPQ3Kfw/edit?usp=sharing>

In Low Light Situations...

When there isn't enough light, you often get blurry, noisy, and dark images.

Guess the solution...



In Low Light Situations...

When there isn't enough light, you often get blurry, noisy, and dark images.

- Blurry from too long a shutter speed
- Noisy from too high an ISO
- Dark from being underexposed

So either add light, or change your settings.



Cameras LOOOOOOOOVE Light!

In good light, cameras can do what things better:

- Guess the solution...



Cameras LOOOOOOOOVE Light!

In good light, cameras can do what things better:

- Focus more easily
- Produce sharper images
- Avoid blurriness
- Avoid noise
- Have proper white balance in sunlight
- Have a correct exposure



How can you add more natural light to the situation

Guess the solution...

How can you add more natural light to the situation

- Move to a sunnier location
- Inside, get closer to a window
- Use a reflector



How can you add more artificial light to the situation

Guess the solution...

How can you add more artificial light to the situation

With professional studio lights,
or cheap DIY lights



What are the problems with using a flash and how can you make it look better?

Guess the solution...

What are the problems with using a flash and how can you make it look better?

Use the flash on your camera, straight or diffused



Tissue Paper Can Diffuse Your Flash



If you really need a faster shutter speed but don't have enough light

Guess the solution...



At you really need a faster shutter speed but don't have enough light

But if you reduce the light coming into your camera with a faster shutter, you must:

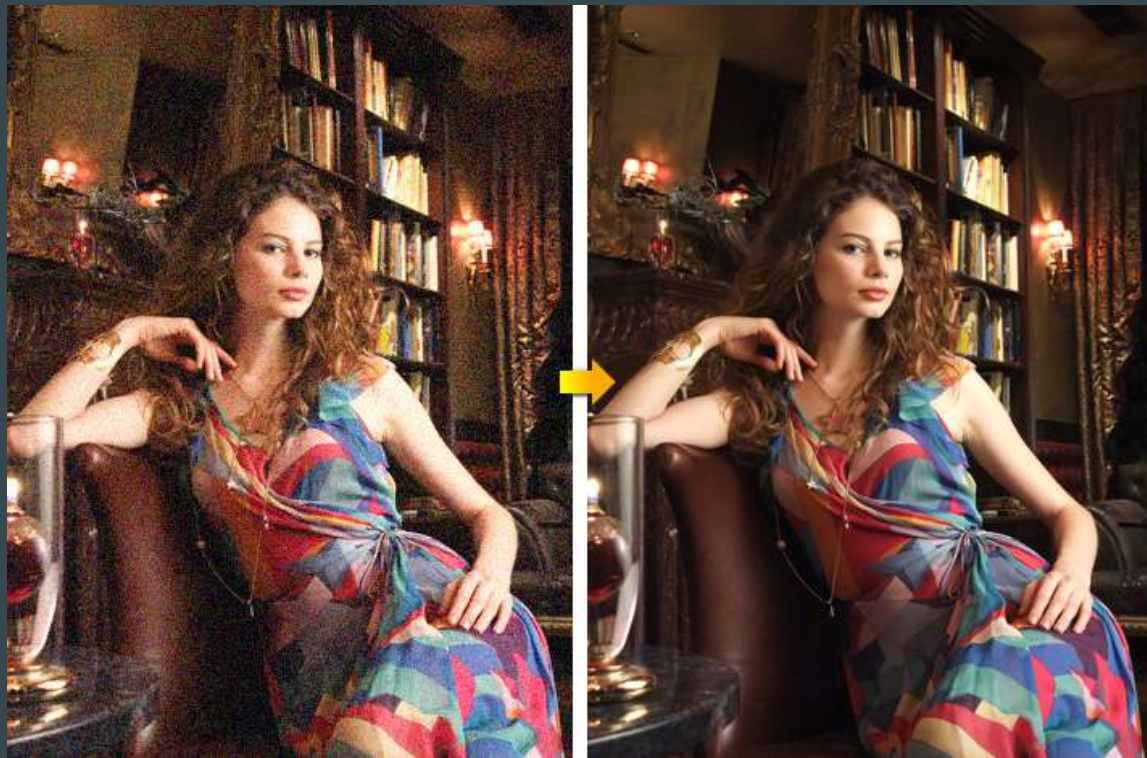
1. Open your aperture to let in more light
2. Choose a higher ISO to make your camera more sensitive to light (but it will add noise)
3. Add more light to the situation



Or if it is an image where nothing is moving, you can use a tripod to hold the camera completely still.

If your photos have too much noise

1. Guess the solution...

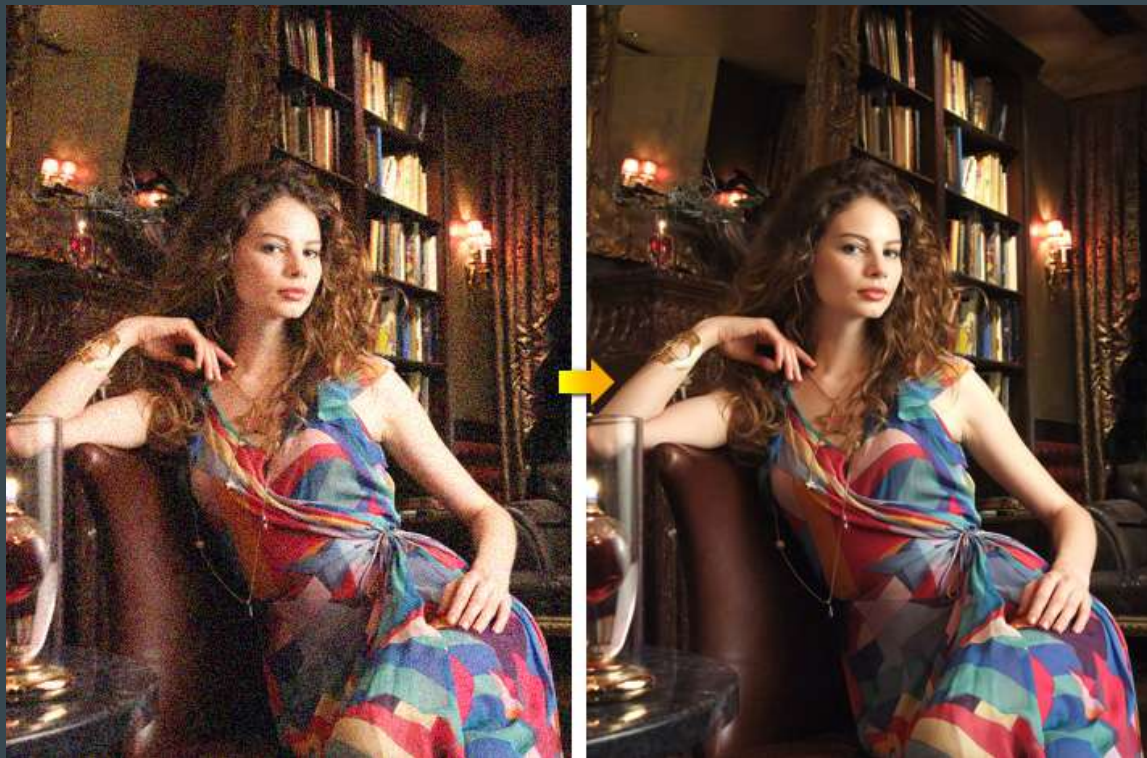


If your photos have too much noise

Avoid Noisy Photos with a lower ISO

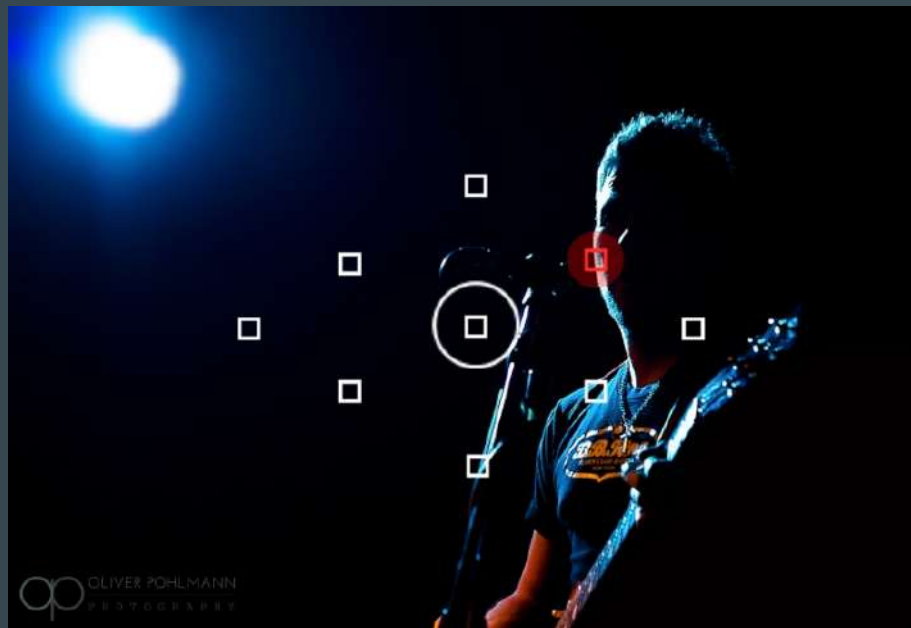
But if you make your camera less sensitive to light you need to either:

1. Let in more light with a longer shutter or a more open aperture
2. Add more light to the situation



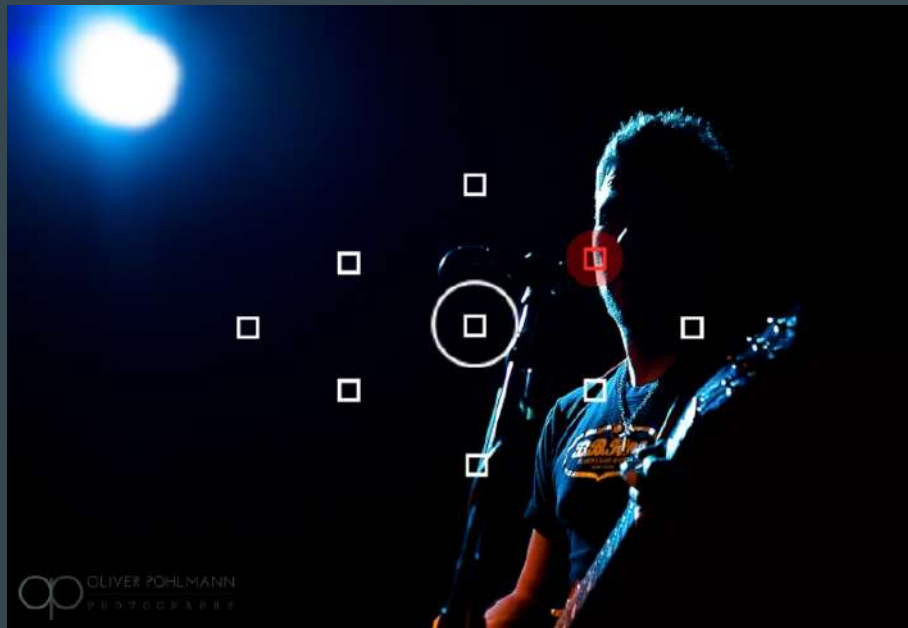
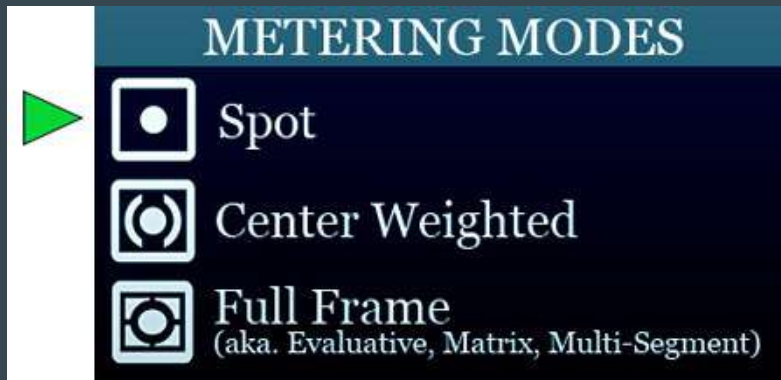
What do you do if you have areas with very little light and other areas that are very bright

Guess the solution...



Use your spot meter

If most of the frame is dark, but there is light on the subject, choose the spot meter mode to have the camera only judge that small part of the frame.



Any other solutions for a low light situation?

Guess the solution...



Embrace Low Light with a Silhouette

If you have a light source behind your subject, meter on the light in the background, and your subject will become silhouetted.

You meter by pressing the shutter down halfway while pointing the center of the lens on the light source.

