



Curriculum Night

Pierce Middle School



Tuesday, September 10, 2024
6:00 pm - 8:00 pm



Welcome & Introductions

01

Administration

Kyle Schultz, Principal

Shelly Cendrowski, Assistant Principal

02

Counselors

Jeff Tunnicliff A-G

Annette Noble H-O

Stacey Taplin P-Z

03

Student Support Services

Erin Clark, Psychologist

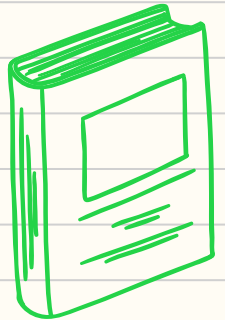
Sandy Clarke, Social Worker

Rebecca Sternberg, Social Worker

04

WPD School Liaison

Officer Matt Reid





PBIS

Positive Behavior

Interventions & Supports

Improve school safety and promote positive behavior.



PBIS Expectation Matrix

Middle School Expectations Matrix

	Classrooms	Bathrooms	Offices	Cafeteria	Before School	Hallway	Lunch/Recess	After School
Be Respectful	<p>Use appropriate and positive language.</p> <p>Listen when others are speaking and speak when it is your turn.</p> <p>Respect others, all staff and property.</p>	<p>Respect the privacy of others.</p> <p>Keep bathrooms clean.</p> <p>Use facilities in a timely manner.</p>	<p>Report to the desk and address the staff politely.</p> <p>Wait quietly.</p> <p>Use please, thank you and excuse me.</p>	<p>Use appropriate language and tone.</p> <p>Use good manners.</p> <p>Follow all staff directions the first time given.</p>	<p>Use appropriate language and tone.</p> <p>Remove hats and hoods upon arrival.</p> <p>Follow all staff directions the first time given.</p> <p>Turn off and put away cell phones.</p>	<p>Use appropriate language and tone.</p> <p>Stay to the right when walking in the hallway.</p> <p>Respect all hallway displays.</p> <p>Stop, listen and follow directions given by adults.</p>	<p>Follow all staff directions the first time given.</p> <p>Use appropriate and positive language.</p>	<p>Follow all staff directions the first time given.</p> <p>Use appropriate and positive language.</p> <p>Be a courteous spectator and/or participant.</p>
Be Responsible	<p>Follow all staff directions the first time given.</p> <p>Take care of your personal belongings and clean up after yourself.</p> <p>Give your best effort.</p> <p>Be prepared to learn.</p> <p>Take care of personal needs before class.</p>	<p>Report graffiti, damage or disturbances to a staff member.</p> <p>Clean up after yourself.</p> <p>Return to your expected destination promptly.</p>	<p>Be honest and truthful.</p> <p>Accept ownership.</p> <p>Return to your expected destination promptly.</p>	<p>Keep all food in the cafeteria.</p> <p>Clean up after yourself.</p> <p>Show respect to all adults.</p> <p>A pass is required to leave the cafeteria before designated release time.</p>	<p>Follow established procedures.</p> <p>Get breakfast promptly and leave when finished.</p> <p>Wait in an orderly manner for buses.</p> <p>Leave school grounds immediately and/or report to your expected destination promptly.</p>	<p>Report problems to a staff member.</p> <p>Report to your expected destination promptly.</p> <p>Follow established procedures.</p> <p>Put all materials away.</p> <p>Come inside when asked the first time.</p>	<p>Report disturbances, accidents and injuries to staff members.</p> <p>Follow established procedures.</p> <p>School rules apply at all times.</p> <p>Show respect to all adults.</p>	<p>Report disturbances, accidents and injuries to staff members.</p> <p>Follow established procedures.</p> <p>School rules apply at all times.</p> <p>Show respect to all adults.</p>
Be Safe	<p>Keep hands, feet and objects to yourself.</p> <p>No contact.</p>	<p>Wash hands with soap and water for twenty seconds.</p>	<p>Wait patiently while sitting or standing in one place.</p> <p>Remain seated or stand in designated areas until called upon.</p>	<p>Get permission to leave your table.</p> <p>Keep hands, feet and objects to yourself.</p> <p>No contact.</p> <p>Walk at a safe pace.</p> <p>Wait patiently for your turn.</p> <p>Never open an exterior door for anyone.</p>	<p>Cross at corners and street crossings.</p> <p>Stay on the sidewalk.</p> <p>Keep hands, feet and objects to yourself.</p> <p>No contact.</p> <p>Go directly home after school.</p>	<p>Walk at a safe pace to the right side of the hallway.</p> <p>Keep hands, feet and objects to yourself.</p> <p>No contact.</p> <p>Never open an exterior door for anyone.</p>	<p>Keep hands, feet and objects to yourself.</p> <p>No contact.</p> <p>Use games, equipment and materials properly.</p> <p>Enter and exit in an orderly fashion.</p>	<p>Stay in the designated area.</p> <p>Keep hands, feet and objects to yourself.</p> <p>No contact.</p> <p>Walk at a safe pace at all times.</p> <p>Never open an exterior door for anyone.</p>

 Be Respectful

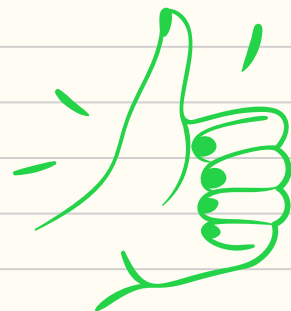
 Be Responsible

 Be Safe



Where Everybody Belongs

8th Grade WEB Leaders help with the
transitions for ALL 6th Grade Students





Pirate Hour/Pirate Day



Social Emotional

Second Step



Team Building

Community Service



PBIS

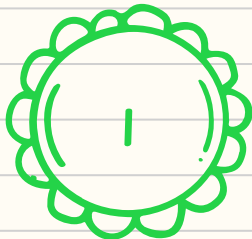
Lessons



Pierce How To...

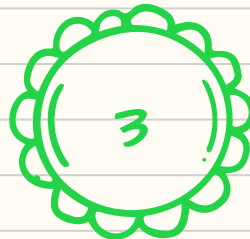
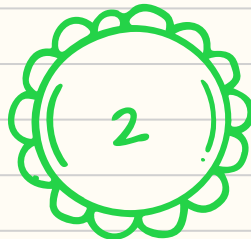
Attendance

Call the attendance line if your student will be absent
248-674-1144



Weekly Update

Emailed at the end of EVERY Week
Posted to Facebook Page & Website



Parent Portal

Parent Portal App Directions

Drop Off/Pick up

Must have ID
No need to call ahead

Label ALL Items

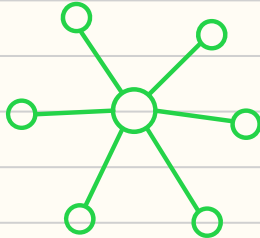
Bag and label all items being dropped off in the Office

Tonight's Schedule

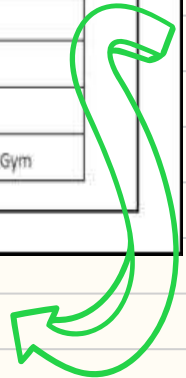


2024-2025

COMING UP^{!!}
Parent Teacher
Conferences:
OCT 10th & 15th



Schedule for Curriculum Night			
Student Name _____			
TIME	CLASS PERIOD	SUBJECT/TEACHER NAME	ROOM
6:00-6:12		All parents – Welcome – intro to school	Main Gym
6:16-6:30	1 st hour		
6:34-6:48	2 nd hour		
6:52-7:06	3 rd hour		
7:10-7:24	4 th hour		
7:28-7:42	5 th hour		
7:46-8:00	6 th hour		
8:10-8:45		8 th Grade D.C. Meeting	Main Gym

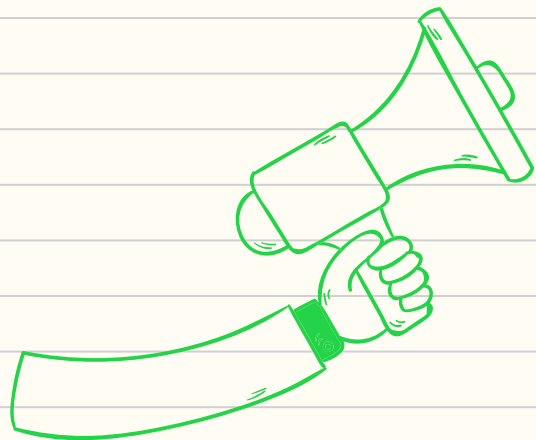




8th Grade Washington DC Parent Meeting

-in the gym following Curriculum Night

Thank you for coming tonight!



8:15 pm - 8:45 pm