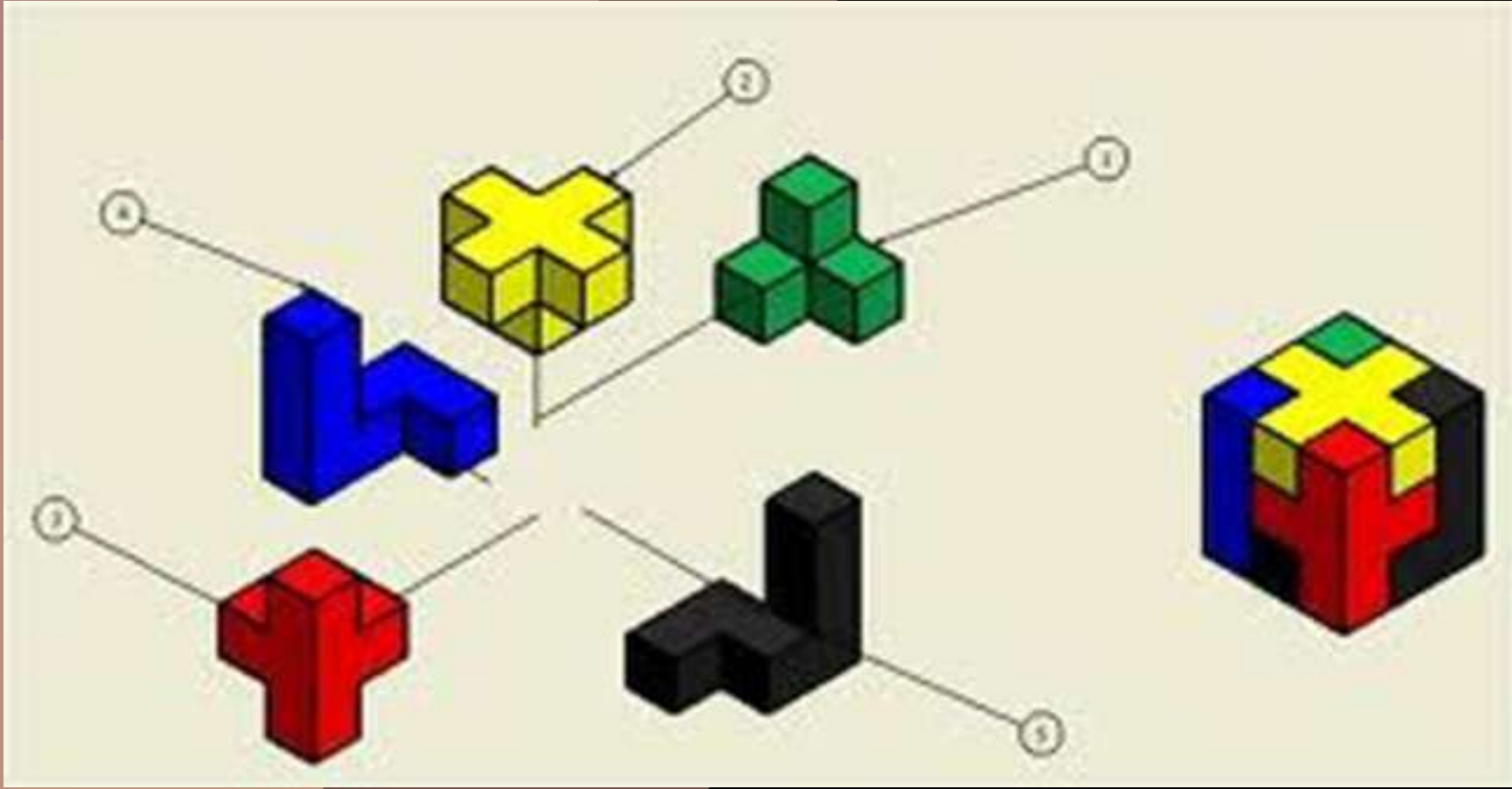


Cube Project



Paper Modeling





Newspaper
headquarters
in China

Shoots out
Fireworks 😊



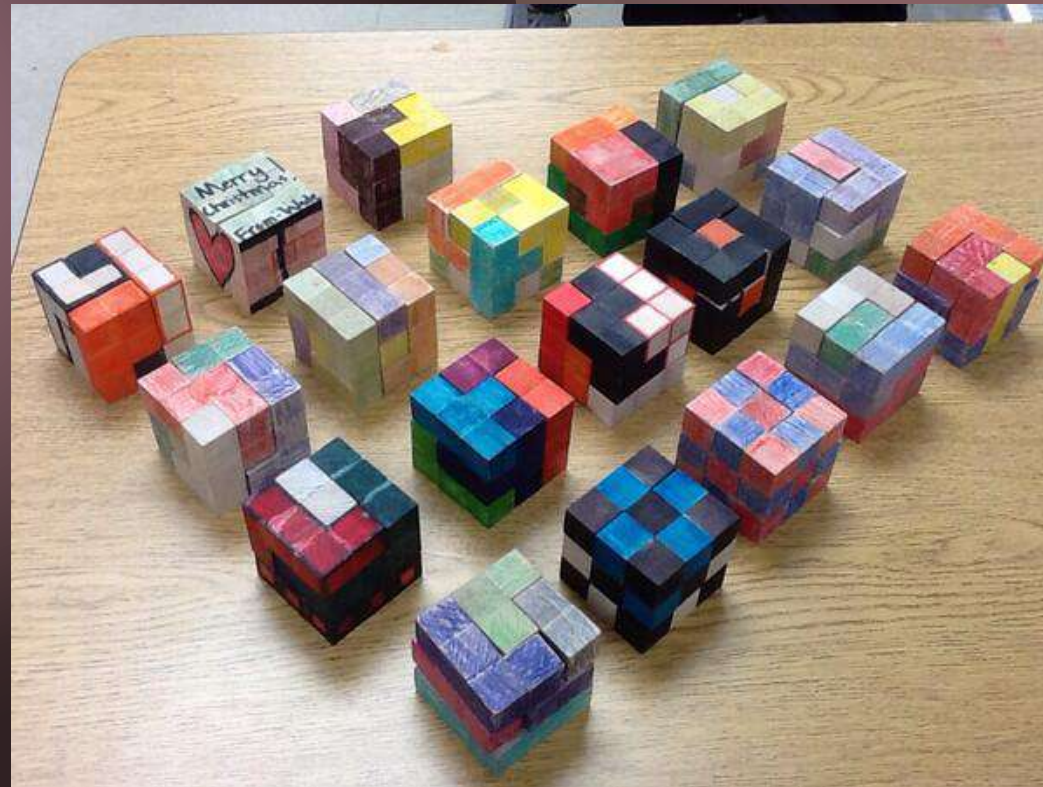
Church

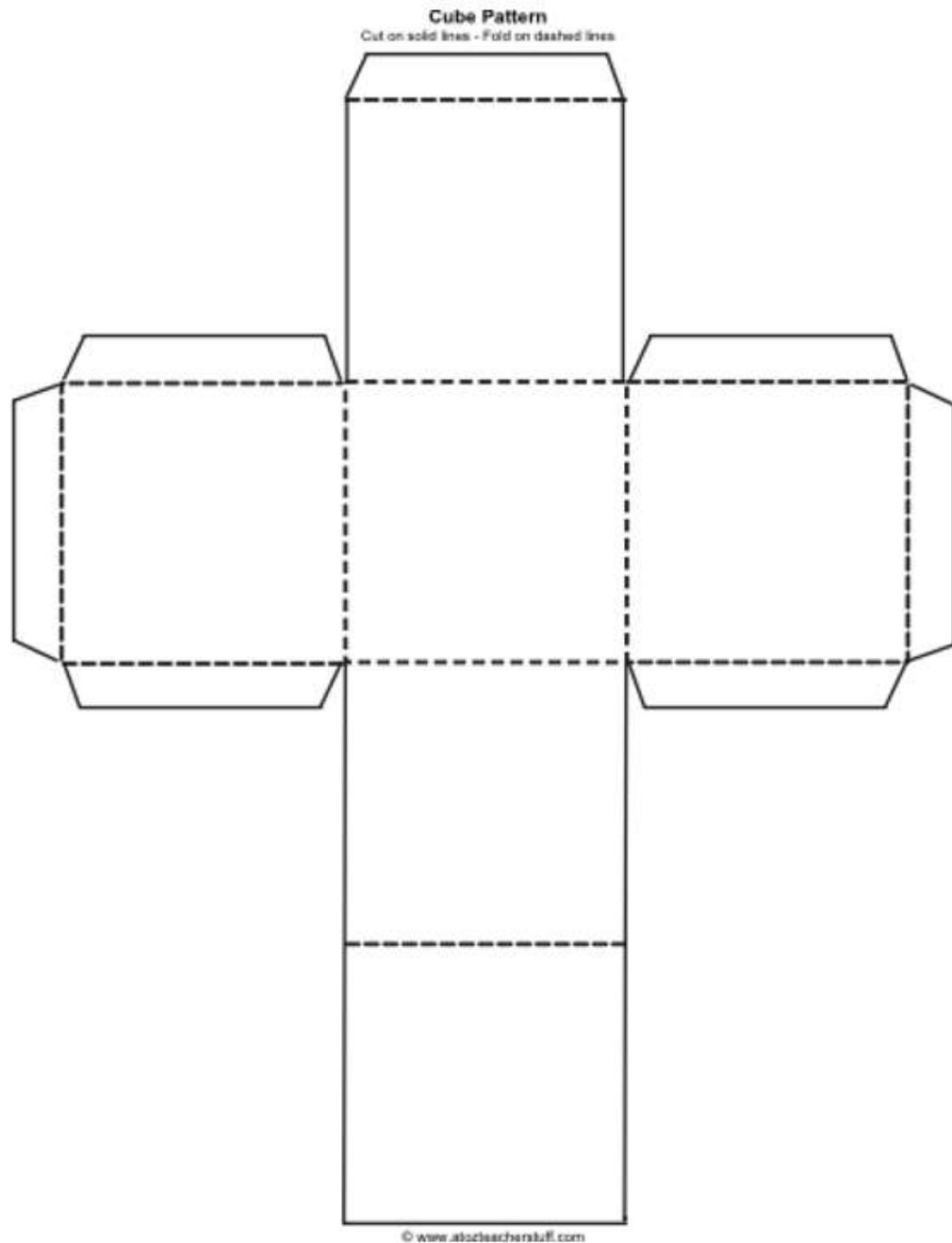


Bridge in London

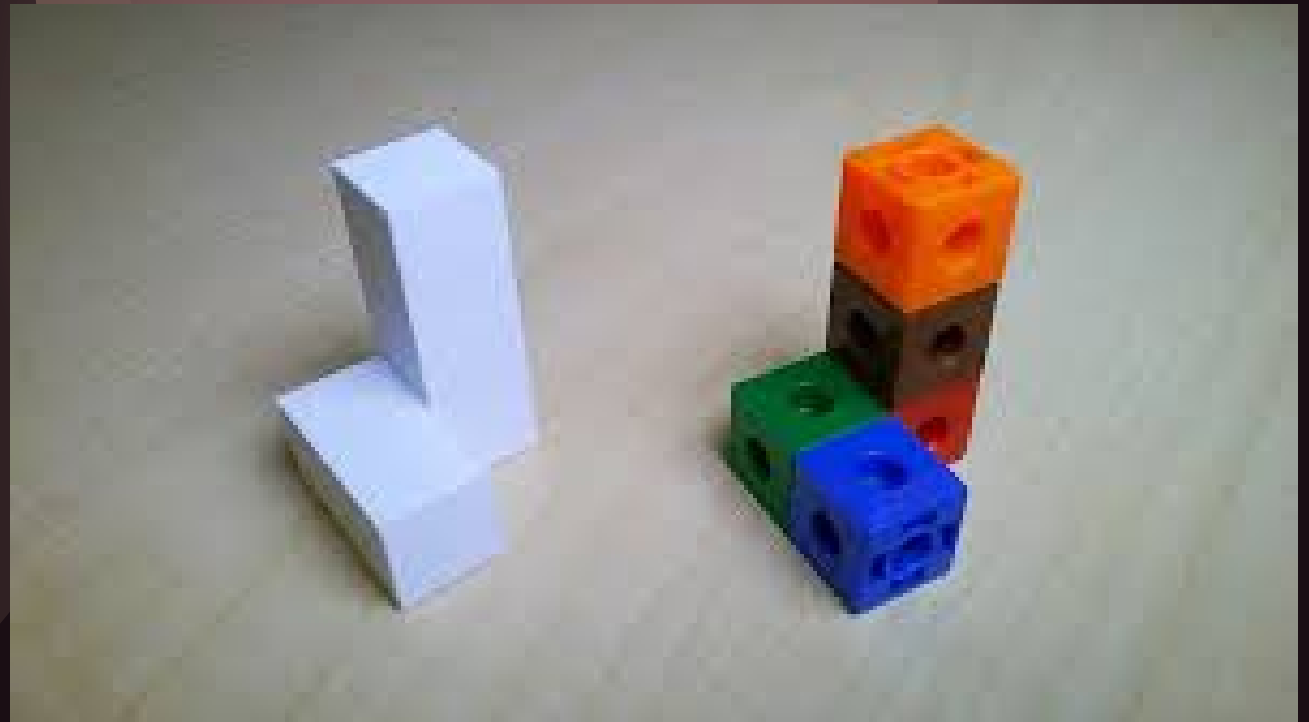


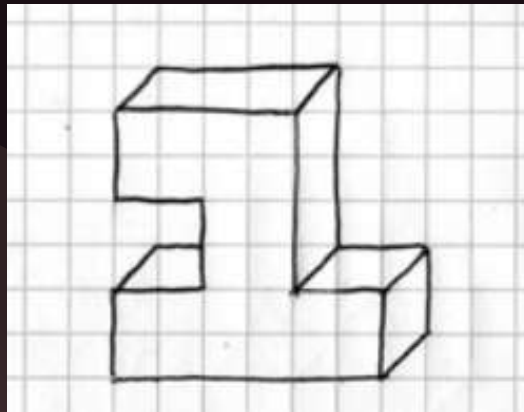
1. The puzzle must be fabricated from paper cubes.
2. The puzzle system must contain exactly five puzzle pieces.
3. Each individual puzzle piece must consist of at least four, but no more than six cubes that are permanently attached to each other.
4. No two puzzle pieces can be the same.
5. The five puzzle pieces must assemble to form a $3 \times 3 \times 3$ cube.



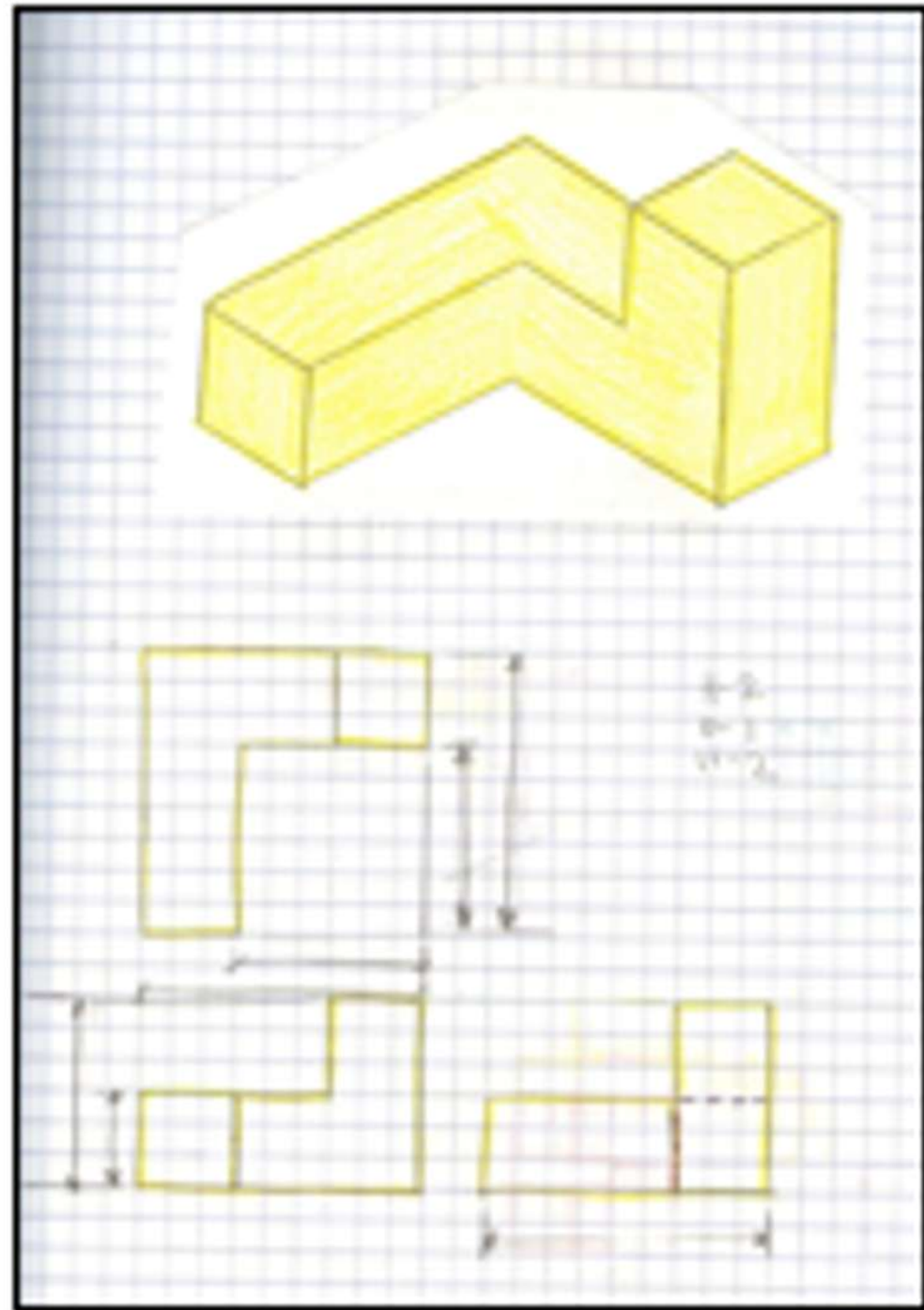


Color each paper cube first, then cut it out, then tape it together to form the puzzle piece





Sketch each piece in isometric, oblique, and multiview.



Make a paper box that fits your puzzle exactly

