

MISSION: To maximize academic achievement by engaging middle and high school CMS students in rigorous and relevant learning to prepare for postsecondary education and careers.

HOW CTE WORKS

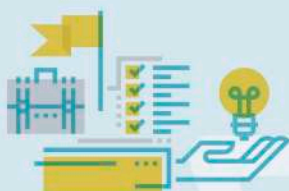
1 DISCOVER While still in middle school, CTE allows CMS students to begin to explore their career interests.



A variety of career fields called **pathways** are offered in high school to help equip students with the 21st century skills needed for a global economy.



2 UNLEASH Sequenced CTE career pathway courses give CMS high school students the framework to begin to move toward their career goals.



CTE students are given the opportunity to receive **industry recognized certifications**, earn credit towards **postsecondary degrees**, or **begin careers** after graduation.

EXAMPLE CTE CAREER PATHWAY: SOFTWARE DEVELOPMENT

COURSE SEQUENCE:

- 1 AP COMPUTER SCIENCE PRINCIPLES
- 2 COMPUTER PROGRAMMING I
- 3 AP COMPUTER SCIENCE A
- 4 SOFTWARE DEVELOPMENT FUNDAMENTALS



A variety of CTE programs of study are hosted at every CMS high school



Students who complete a pathway sequence earn recognition as a Concentrator

3 SOAR CTE students are better prepared for higher-level courses in college as well as a wide range of high-wage, high-skill, high-demand careers.



CTE students are given the opportunity to receive **industry recognized certifications**, earn credit towards **postsecondary degrees**, or **begin careers** after graduation.



99%

CMS GRADUATION RATE FOR STUDENTS CONCENTRATING IN THE CTE PROGRAM



Mecklenburg County employers need CTE students!



Heightened exposure to guest lectures and career fairs



Enroll in early college opportunities



Job shadowing and paid summer internships