

CRIME Scene Sketch

PURPOSE:

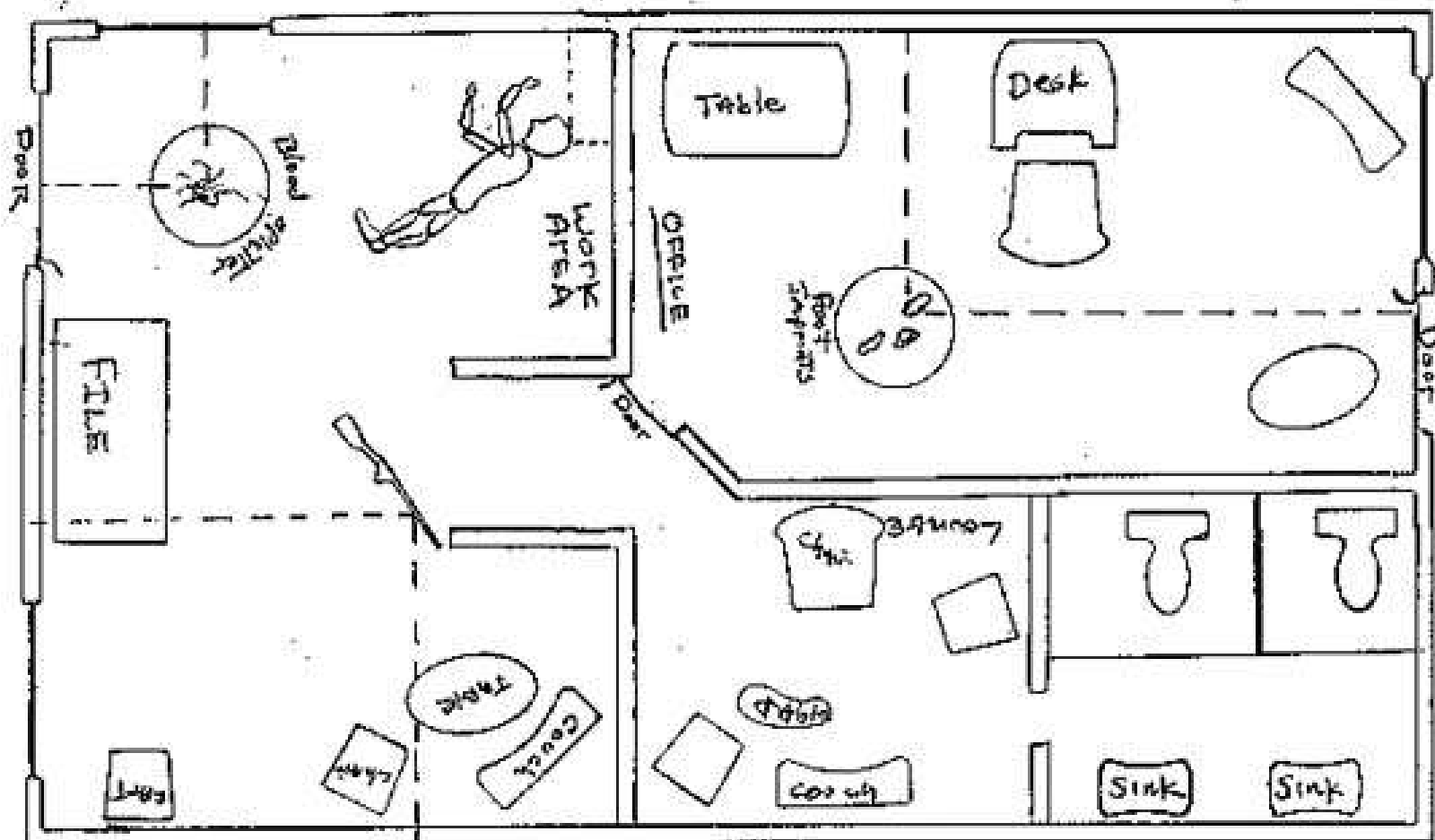
- ☐ *The crime scene sketch is an invaluable aid in recording investigative data.*
 - ☐ *It is a permanent record that provides supplemental information that is not easily accomplished with the exclusive use of crime scene photographs and notes.*
-

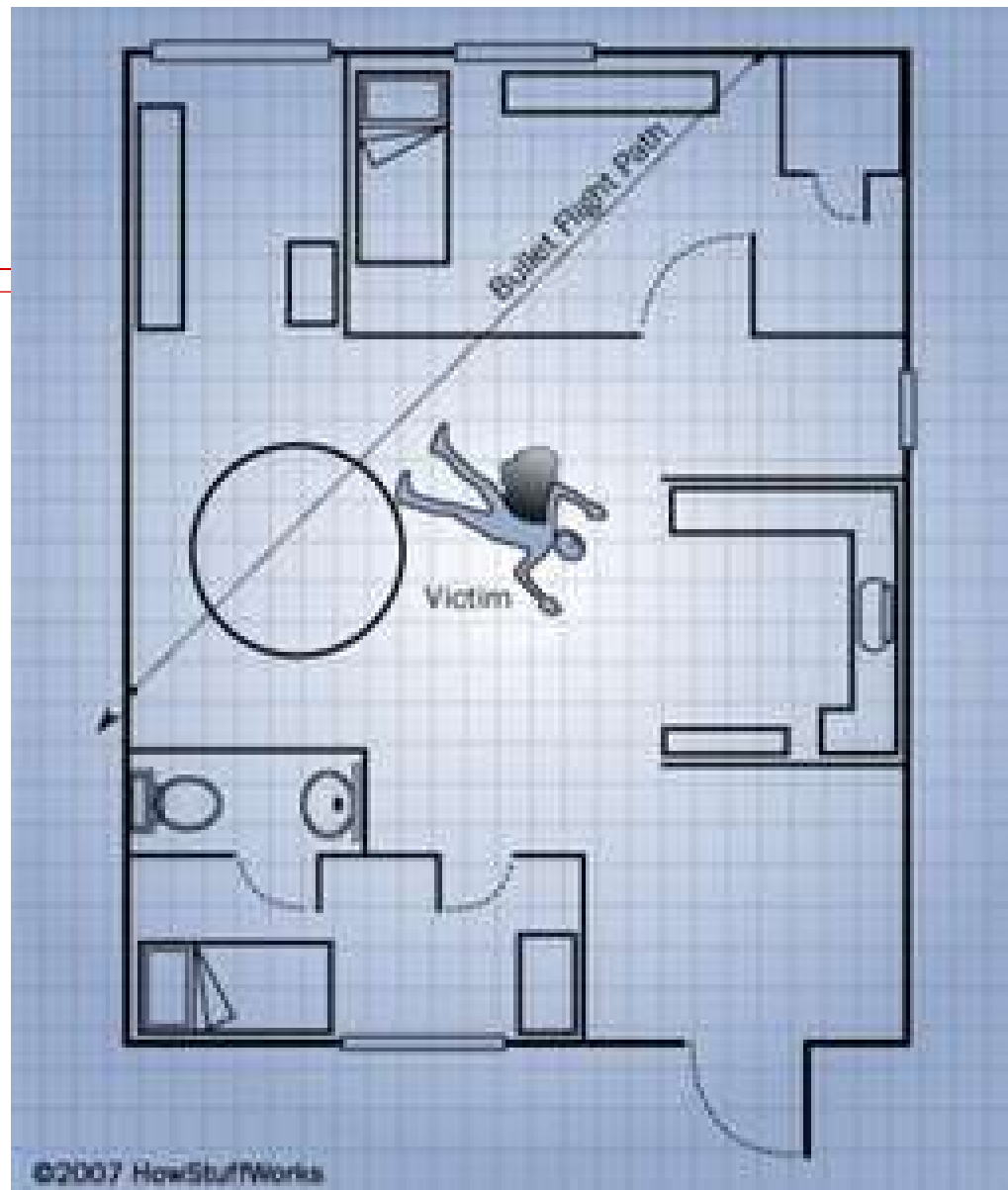
Uses in Court:

- ❑ *Depicts the overall layout of a location*
 - ❑ *Shows the relationship of evidence to the surroundings.*
 - ❑ *It can show the path a suspect or victim took and the distances involved.*
 - ❑ *It can be used when questioning suspects and witnesses*
 - ❑ *Should correlate to the testimony of witness*
 - ❑ *Serves as a tool to reference to the for prosecutor, judge and jury.*
-

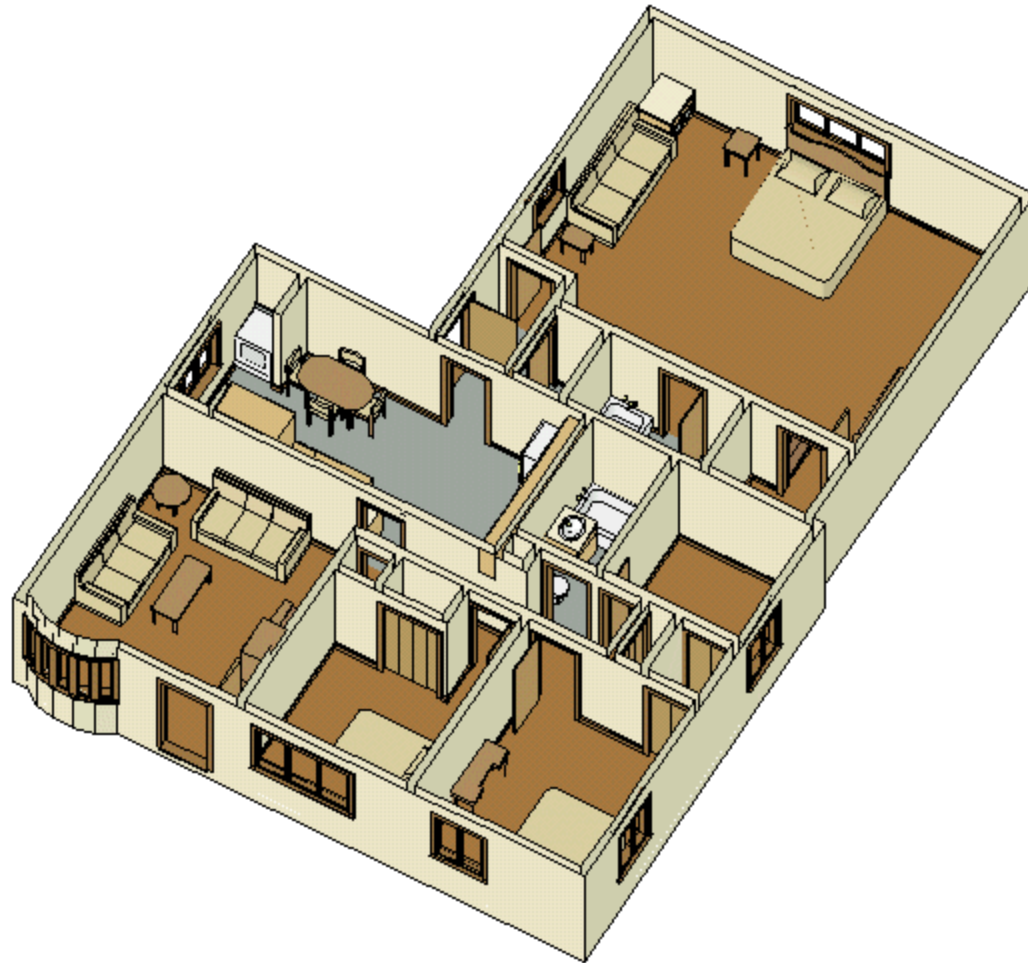
What must be included on the sketch

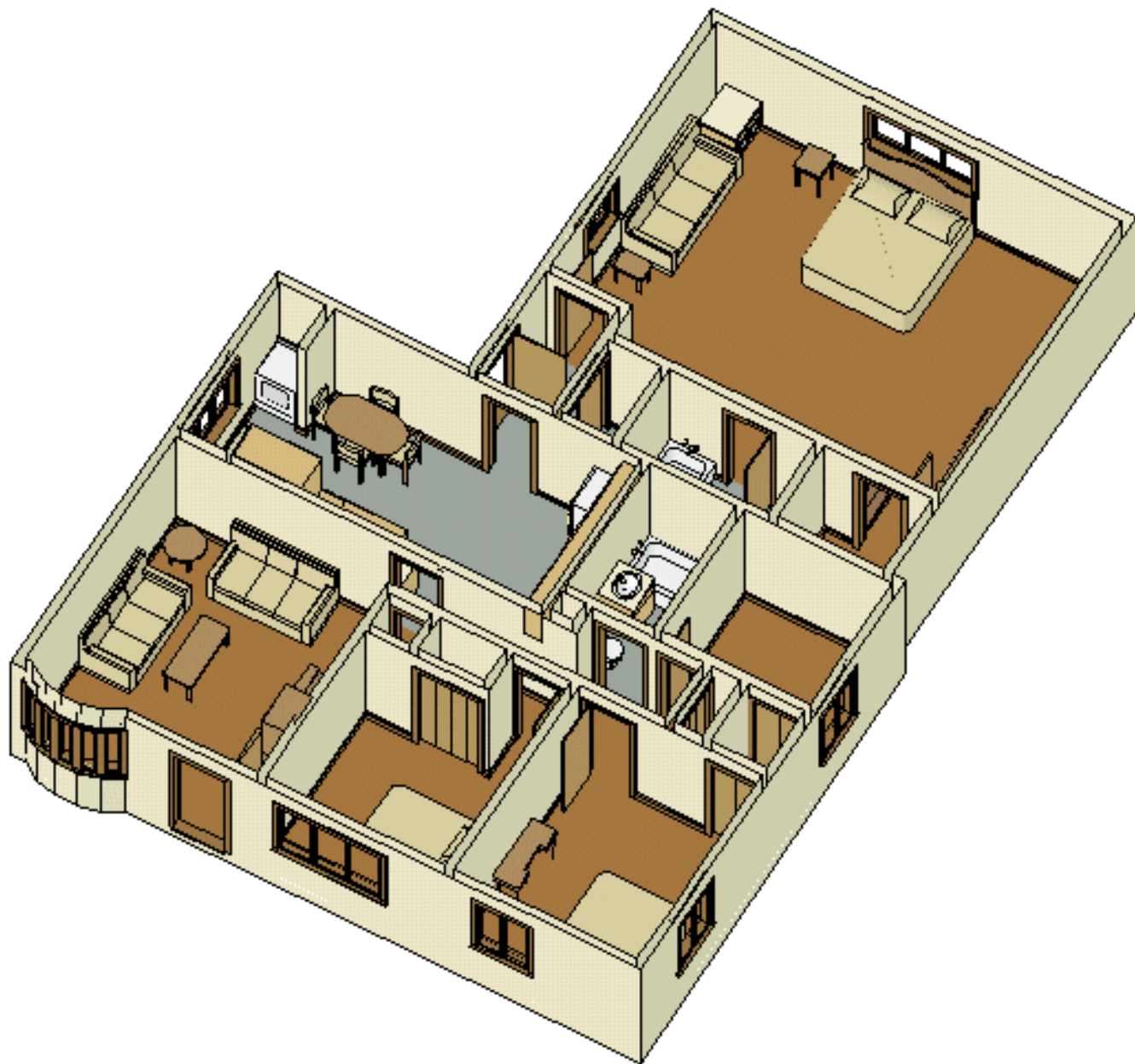
- A. Address or location of scene.
 - B. Case number.
 - C. Date sketch was made and by whom.
 - D. A key to identify the different objects in the sketch.
 - E. An arrow to show the direction of north.
 - F. Scale used for the sketch or the statement "Not to Scale".
-











[http://www.designwareinc.com/3d_prod
.htm](http://www.designwareinc.com/3d_prod.htm)

□ <http://www.mapscenes.com/capture/samples/>

3D scenes

☐ http://www.designwareinc.com/3d_library.htm

YOUR JOB:

- ☐ Recreate the crime scene sketch, neatly, with straight edge, to scale, errors corrected, labeled
 - ☐ Question # 6 on lab
 - ☐ List of errors you corrected
-