

Summary of Norwood COVID-19 cases



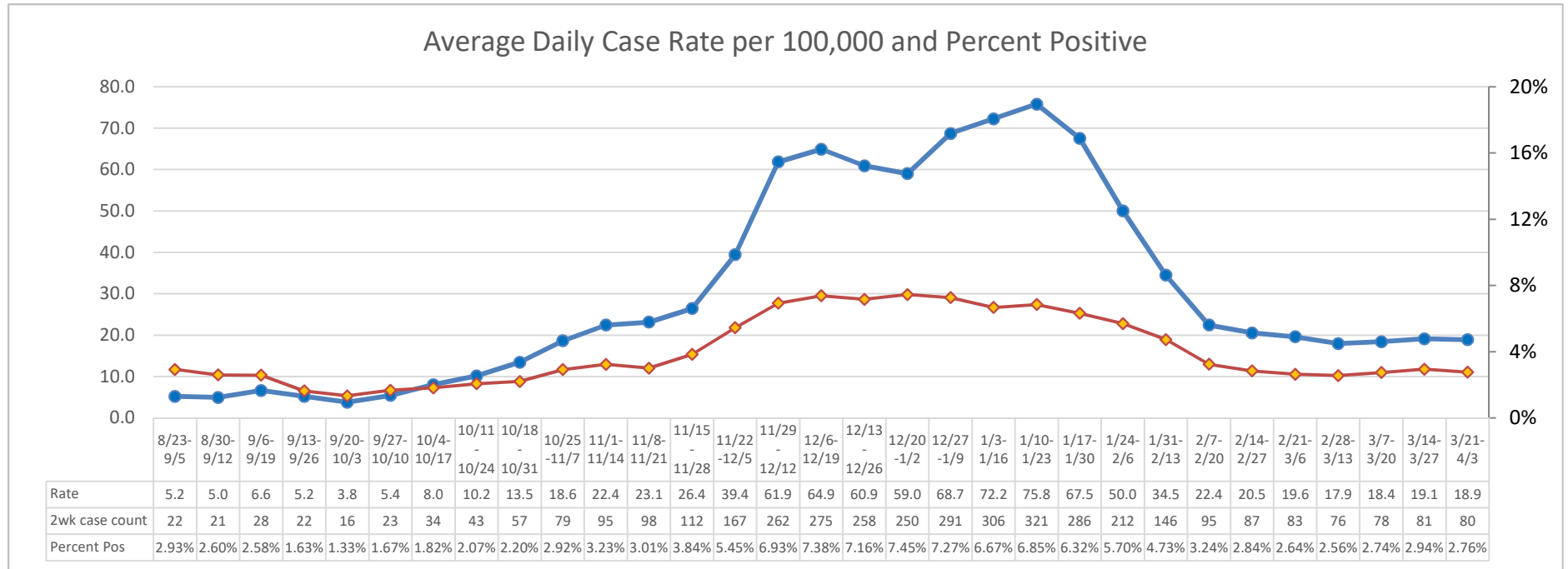
**NORWOOD
PUBLIC
SCHOOLS**



School Committee

4/7/2021

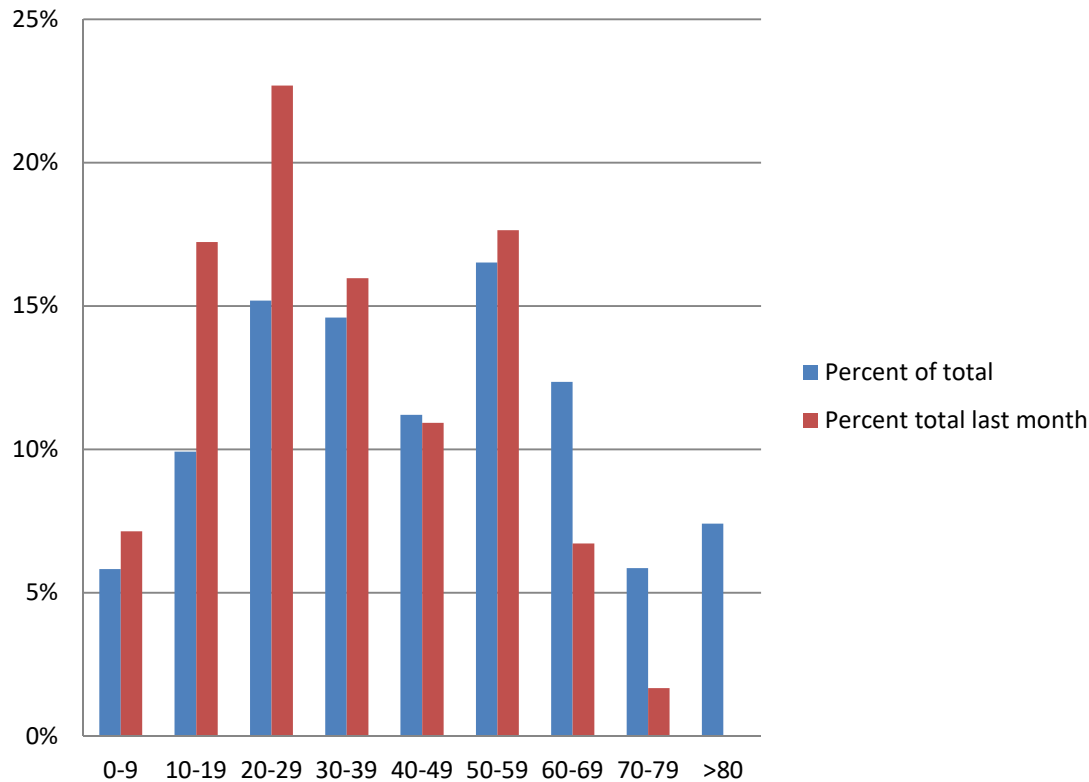
Case Count Summary



- 80 cases in two-week period (81 last week)
- Rate: 18.9 average daily case count per 100,000
- Percent Positive 2.76% (2.94% last week)

Confirmed Cases Summary

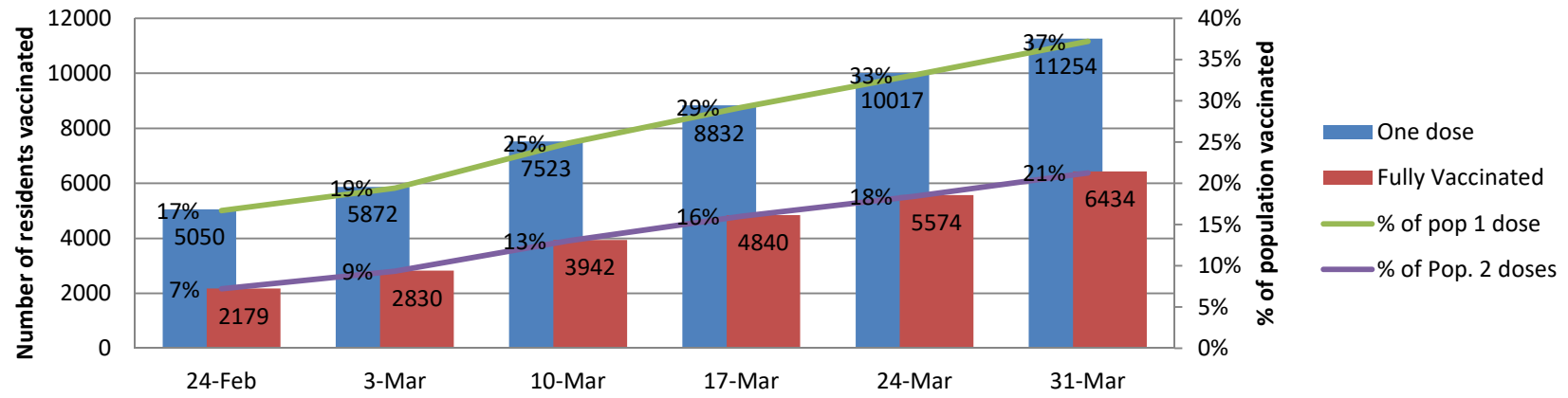
Percent of total Cases by Age Group



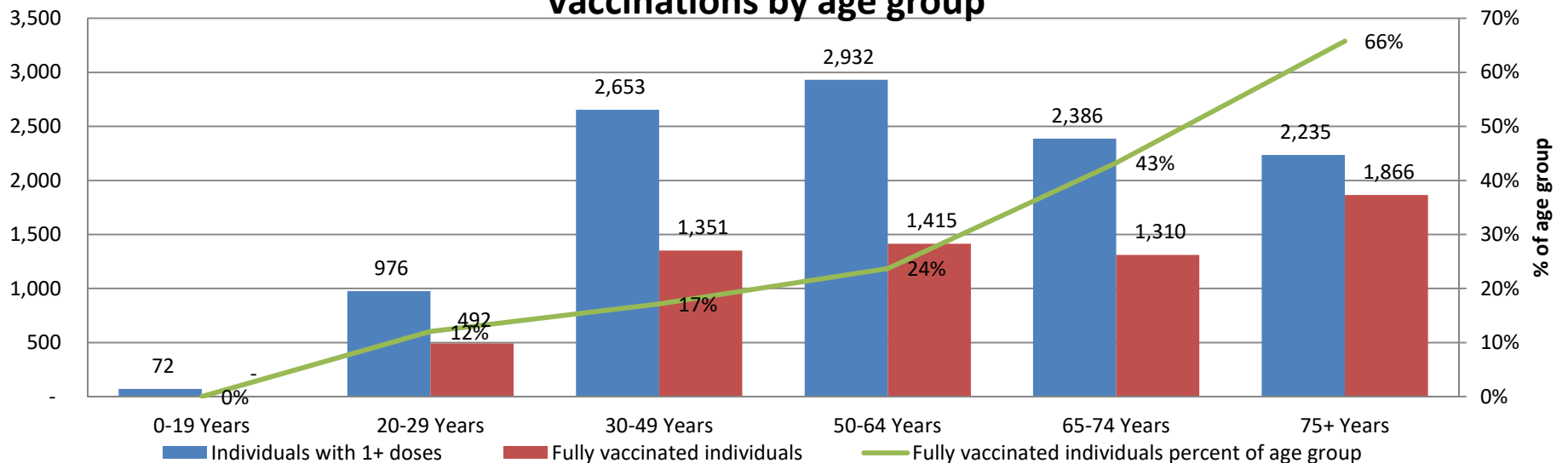
- Average age: 34.2yrs
- Range of age: 0.5 - 73 years old
- 16% of cases school aged kids (5-18)
- 8 student/staff cases

Vaccine Updates

Norwood Population Vaccinated



Vaccinations by age group



Variants

- There are several different strains that have been found in MA.
 - B.1.1.7, first detected in the U.K.
 - Now most common strain circulating
 - P.1 variant, first detected in Brazil.
 - B.1.351, first detected in South Africa.
 - B.1.427 & B.1.249 identified in CA
 - CDC and State will start reporting variants as a percent of total cases

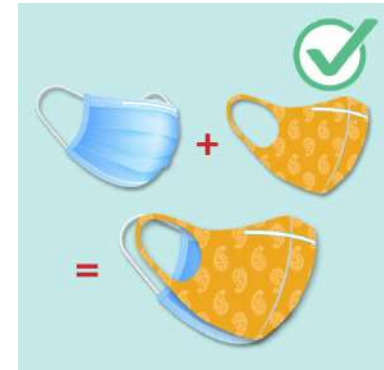
Travel Advisory

Want to remind everyone with April Vacation coming...

- All visitors entering MA, including returning residents, are advised to quarantine for 10 days upon their arrival.
- Test result administered up to 72 hours prior to their arrival in Massachusetts. If not obtained before entry to state, a test may be obtained after arrival, as long as travelers quarantine until a negative test result has been received.
- Anyone who is returning to Massachusetts after an absence of fewer than 24 hours is exempt from this advisory.
- Travelers who are fully vaccinated and who do not have symptoms are exempt from this advisory.

Masks – Improve how your mask protects you

- Make sure it fits snugly against your face
- Pick a mask with layers
- Choose a mask with nose wire
- Add layers
 - Cloth mask with multiple layers
 - Wear a disposable mask underneath a cloth mask (double mask)
- Do not combine two disposable masks or combine a KN95 with another mask



Thank you