

Art Self Portraits

Art 2/ Art 3

Art 3 and Honor students are required to the research based portrait.

It all begins with a bit of research

Look at the portraits of :

Andy Warhol

Frida Kahlo

Roy Lichtenstein
Butler

Bisa

Kehinde Wiley

Amy Sherald

Cindy Sherman

Or perhaps there is another artist you would

Art Styles

Photographic Surrealism

Pop Art

Expressionism

Fauvism

The Process

Find an artist that interests you. Their style, presentation etc. I am looking for a creative approach to your selfie, so don't just copy a technique you find on line. That has all been done- what can you come up with! Document your research- find out some info about them-not just images!!!!

Get your idea/concept approved by me.

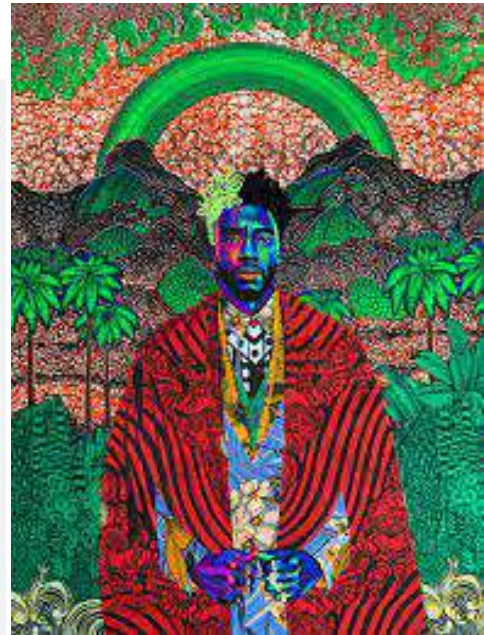
Your welcome to use any props, camera, drops etc to create your Art self portrait. PLAN_PLAN_PLAN!!!

Think about the elements of the artist work- what can you take and use in with what you have available. I'm here to help you with techniques!!

1 final - 8x10 or 12x18- with research statement on how your portrait connects to your chosen artist.

Due 3/4

Bisa Butler



https://youtu.be/yNIB_2luMY8

Kehinde Wiley



<https://www.newyorker.com/culture/annals-of-appearances/the-shifting-perspective-in-kehinde-wileys-portrait-of-barack-obama>

<https://www.brooklynmuseum.org/opencollection/objects/169803>

Andy Warhol



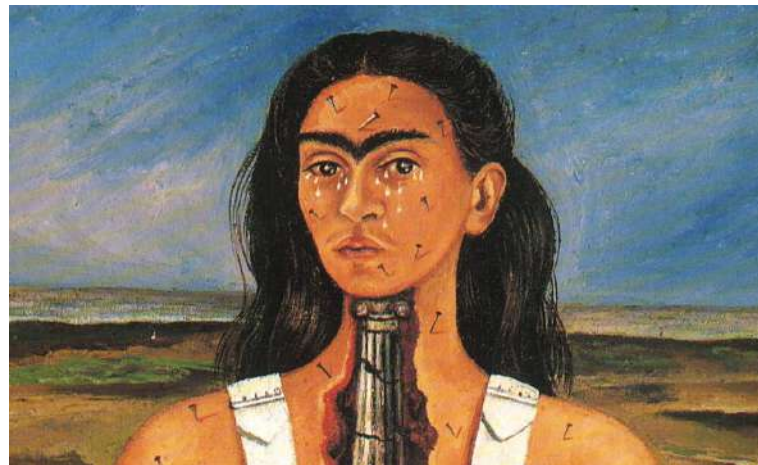
<https://www.theguardian.com/commentisfree/2022/feb/13/its-not-our-job-to-flatter-the-vanity-of-the-famous-so-meet-my-andy-warhol-and-jean-michel-basquiat>



Frida Kahlo



<https://www.fridakahlo.org/>



Roy Lichtenstein



<https://www.tate.org.uk/art/artists/roy-lichtenstein-1508>

Amy Sherald



<http://www.amysherard.com/>



<http://www.photographyoffice.com/blog/2014/9/top-ten-surreal-photographers-you-have-to-know>

<https://www.icp.org/browse/archive/constituents/ralph-eugene-meatyard?all/all/all/all/0>

Ralph Meatyard



Hans Bellmer- La Poupee 1934



Doll - 1934



Cindy Sherman



https://youtu.be/239_BLVToB8

Option 2

Andy Warhol 1928-1987

- Began as a commercial artist
- His work was based on one central insight: that in a culture glutted with information, where most people experience most things at second or third hand through TV and print.
- Because of this images that become banal and disassociated by repeated again and again
- Applied the same concept to portraits of the famous
- Affectless- distortion through repetition without correction or clean up during the printing process.
-



<https://www.warhol.org/andy-warhols-life/>



Alternative- Create a 4 square Pop Art Selfie Portrait based on Andy Warhol's pop art portraits



Process: Take at least 4 different selfies- Have Fun with them! You can take them with your phone or use the camera and backdrop (with help from an assistant) in the classroom. You can use props and masks as well!! Have fun with it!!!!

In the end you will use one image to create your portrait collage (it will be 1 image repeated 4 times- set up on a canvas- think of a 4 best but they will fill the canvas- no space between them)

Now you can play with filters (I would recommend Posterize, threshold, solarize. There should be a graphic quality without a distortion of the image(it should remain recognizable as a portrait of you!!!)

You can select and paint areas (using layers) or even free paint. You can fill your backgrounds with color.

You should have similarities to maintain unity and balance. One image should not stand out among all the rest!!

There is of course a Demo Screencast on how to set it up and use different techniques!!

