



# Build A Square

Challenges

To Lead  
Your Team

To Work As  
A Team

Communicate  
Effectively

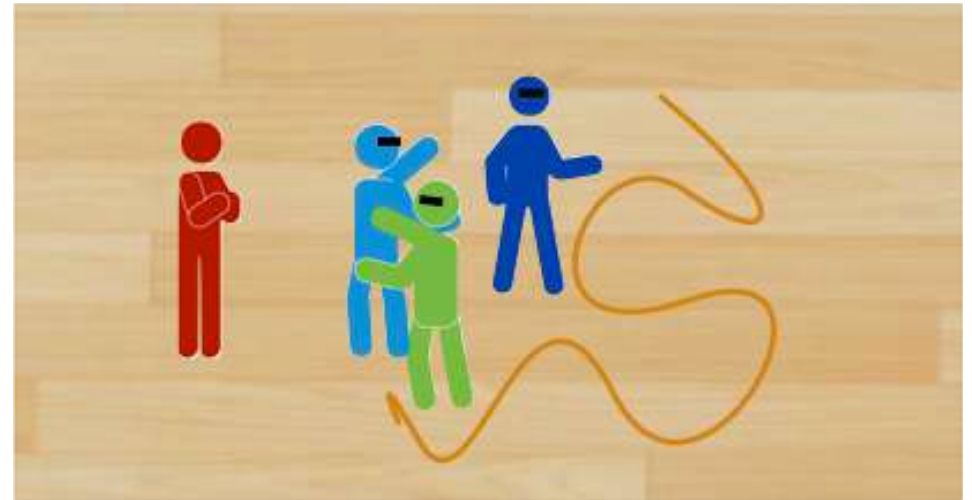


## Rules of Play

- Divide the students up into groups of 5 players. Explain to them that they will be wearing blindfolds and with exception of the leader of their group (the leader should be a student who showed good behavior in class and previous classes).
- Tell the leader that they are not allowed to speak and must figure out other ways to communicate with their team, but the other team members are allowed to speak.
- The leader may physically and gently lead students.
- The group's task is to form a square with a long rope while all the students are holding the rope.
- Start the activity with all students standing on a line facing the rope, which should be placed 15 feet away from the group. The instructor should make sure to constantly monitor the students so that they remain away from walls or other obstacles.

## Variations and Progressions

- If the game seems too hard for the students to play, allow the leader to speak.



## Game Info

### Equipment

1 long rope and 4 blindfolds per group

### Safety

Make sure the leader is aware of proper touching when guiding the students (shoulders, arms, back)

## Discussion

*What are the characteristics of a good team leader?*

*Why is it important to work as a team for this activity?*

*What kind of instructions should the leader give to their team?*