

A Comparison of Amoeba to Paramecium.

1. Comparison of Structure:

Use terms from the following list to label the diagrams of the amoeba and the paramecium. Some terms will be used more than once.

Anal pore	Macronucleus
Cell membrane	Micronucleus
Cilia	Mouth pore
Contractile vacuole	Nucleus
Cytoplasm	Oral groove
Food vacuole	Pellicle
Gullet	Pseudopod
Lysosome	

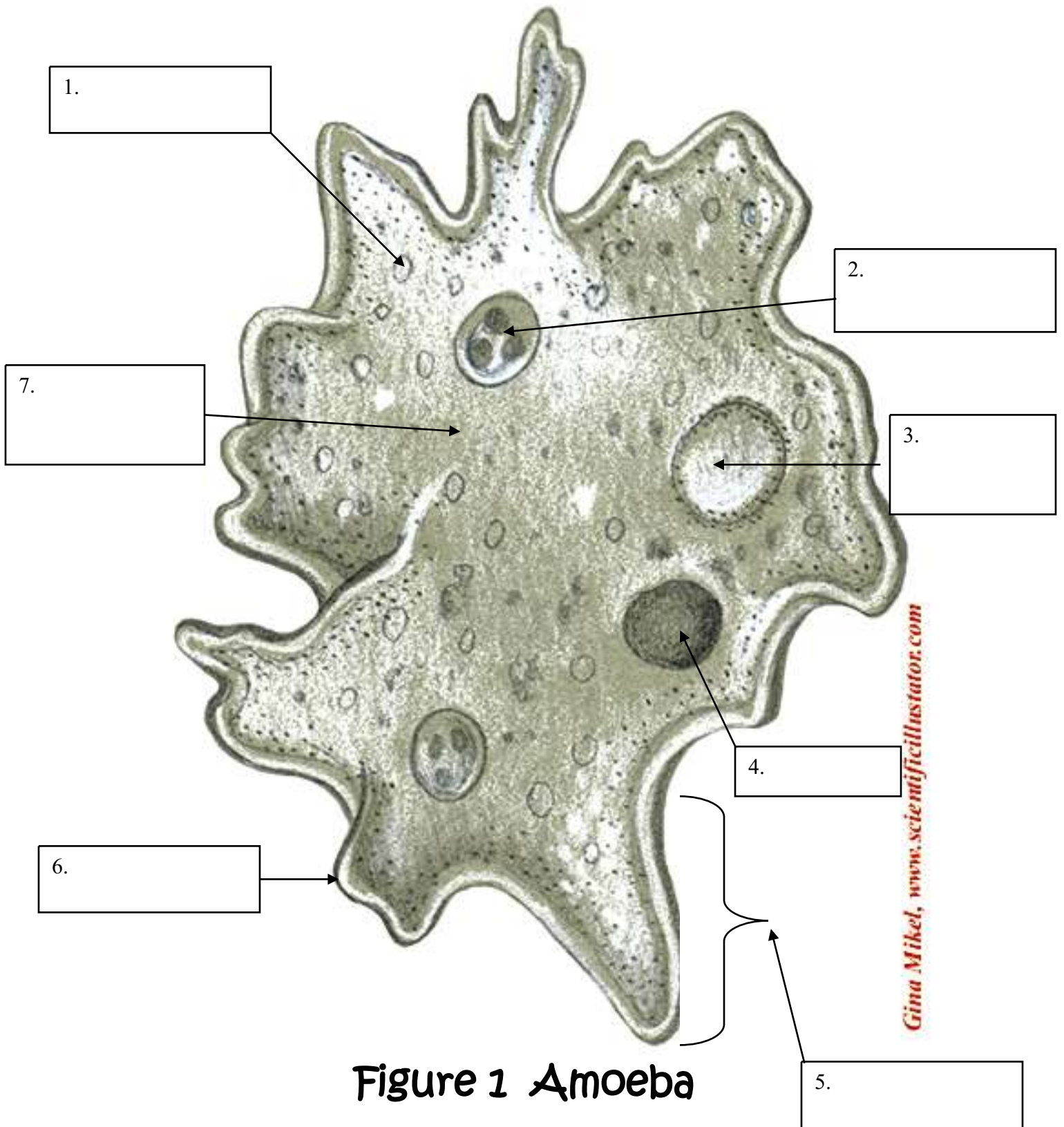
2. Feeding and Digestion:

- On a separate piece of paper, use the following terms to write a paragraph describing the technique used by an amoeba to obtain food, digest food, and to eliminate digestive wastes. Underline each word when it appears in your paragraph.

Cell Membrane Digestive waste Enzymes Exocytosis Food vacuole Lysosome Phagocytosis Pseudopod
--

- b. On a separate piece of paper, use the following terms to write a paragraph describing the technique used by a paramecium to obtain food, digest food, and to eliminate digestive wastes. Underline each word when it appears in your paragraph.

Anal pore
Cilia
Digestive waste
Enzymes
Exocytosis
Food vacuole
Gullet
Lysosome
Mouth pore
Oral groove



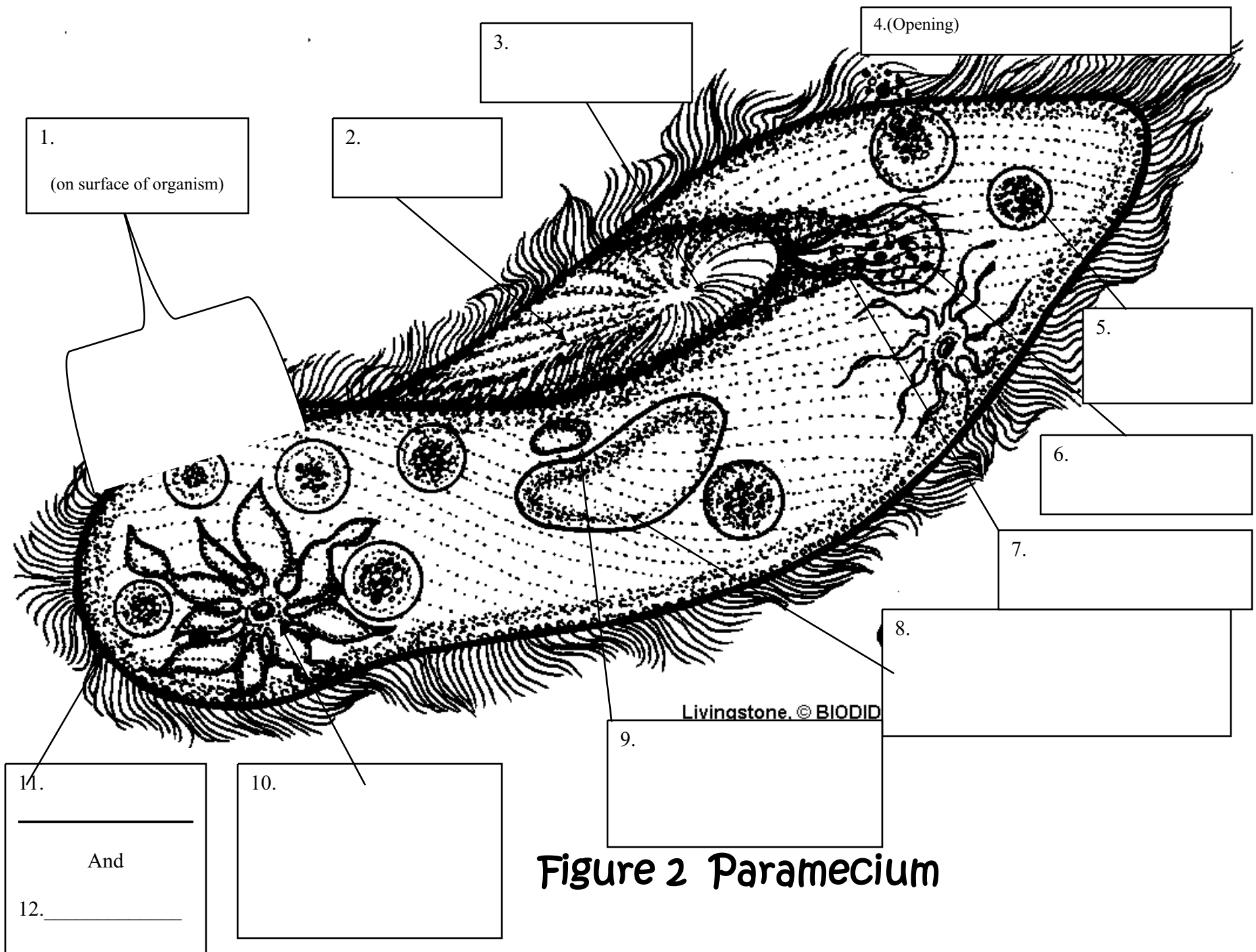


Figure 2 Paramecium

