

Watercolor Painting

Teacher: Mrs. Ann Eyster



The Color Wheel
and the art of the
Mandala!

KEEP IT LIGHT UNTIL YOU GET IT RIGHT!



Objectives & Ohio State Fine Arts Standards

Knowledge: Students will identify the primary, secondary, and tertiary colors.

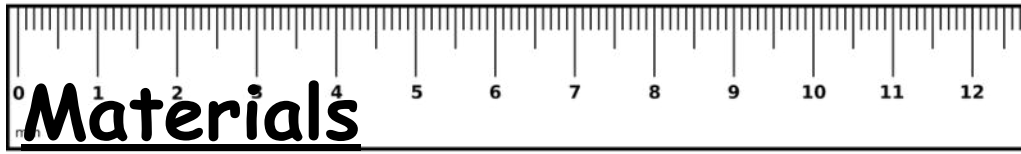
Reasoning: Students will distinguish between a tint and a shade.

Skills: Students will create a 12 point mandala.

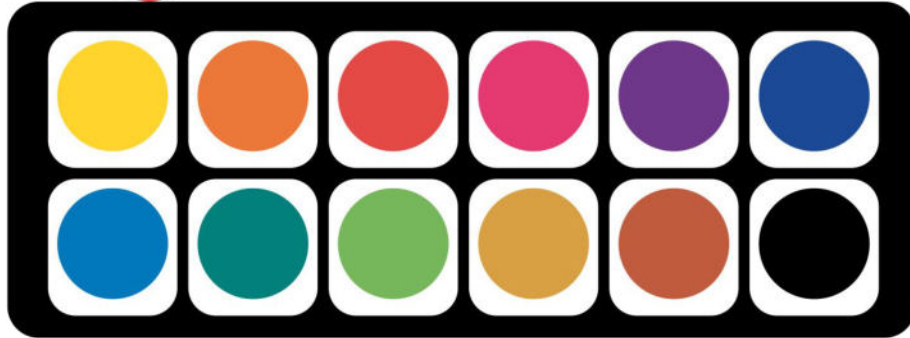
Craftsmanship: Students can thoughtfully mix paint to create value scales in primary, secondary, and tertiary colors.

3PE Identify the relationship between community or cultural values and trends in visual art. 1PR Demonstrate basic technical skill and craftsmanship with various art media when creating images from observation, memory and imagination. 2PR Apply the elements and principles of art and design using a variety of media to solve specific visual art problems. 3PR Explore multiple solutions to visual art problems through preparatory work. 4PR Establish the appropriate levels of craftsmanship when completing artworks





- **Watercolor Paper, multi-media paper or tag board**
- **Watercolor Paint (box)**
- **Ruler**
- **1 paint brush per student**
- **Sharpie Marker**
- **Water**
- **Compass or circle template**





Daily Schedule

Make sure you use your class time to work!

Day 1 - Introduction to Color Theory and terms.

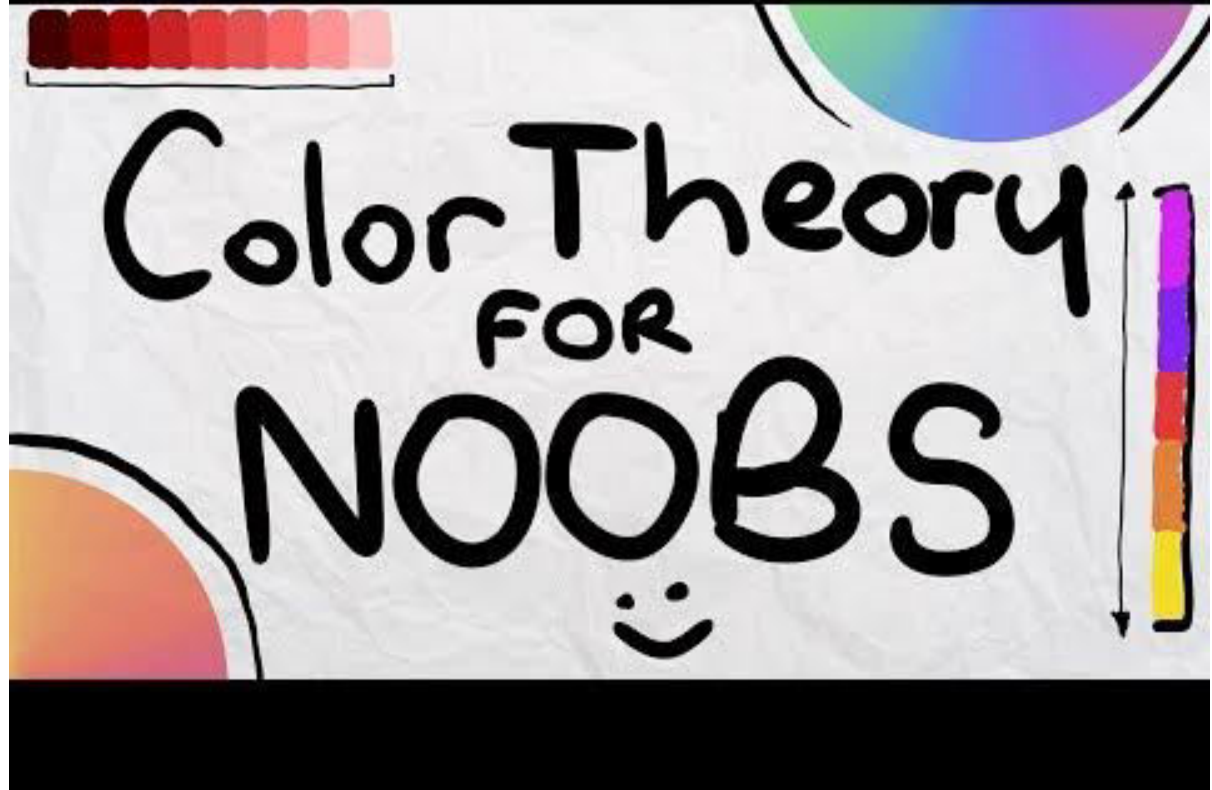
Day 2 - Learn how to create a Mandala

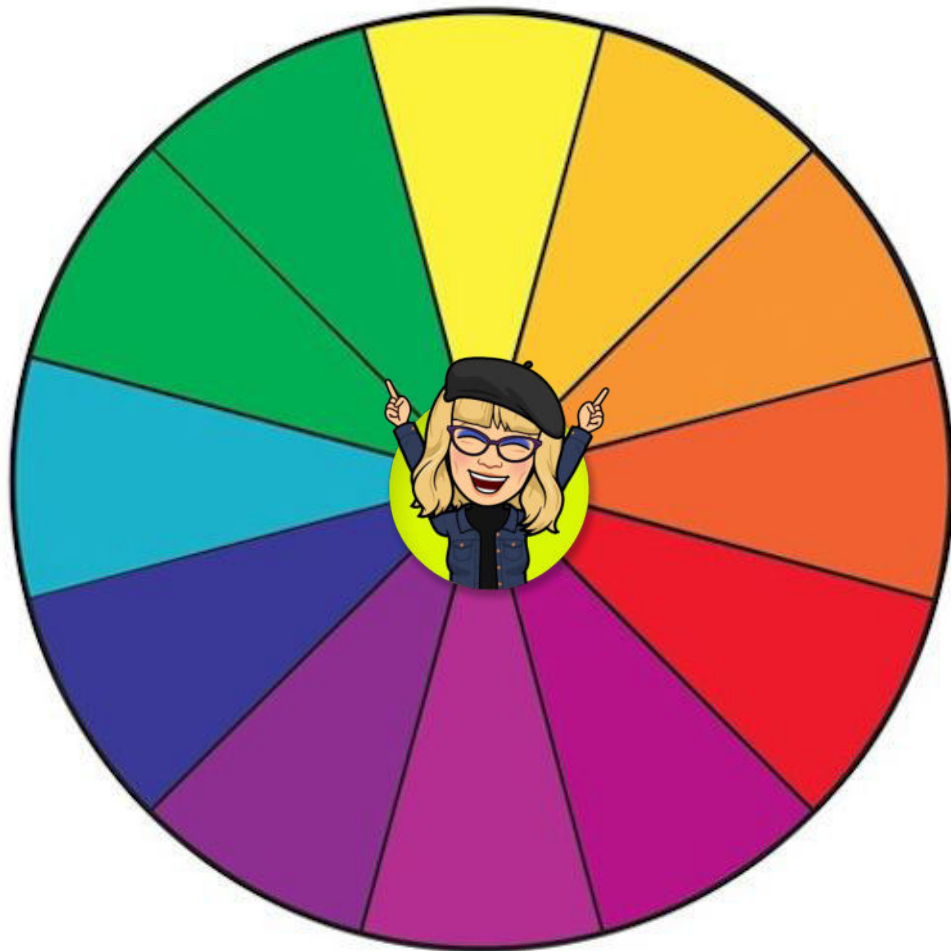
Days 3-5 - Create Mandala and outline shapes in black sharpie marker. Use a ruler on all straight lines. Video and handout on steps provided.

Days 6-10 - Paint Mandala in the ORDER of the color wheel using 4 values. Two values should be **tints** made by adding more water to your color and two should be **shades** made by adding a little black to your color.

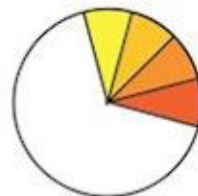
***When you are finished check your project to make sure it's neat and clean!**

This video
is a short
overview
of color
theory and
how it's
used.
Watch
before you
begin!





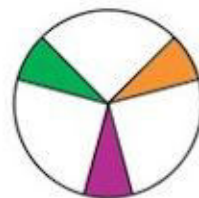
primary



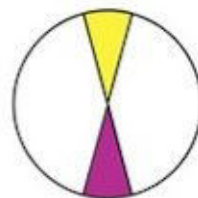
analogous



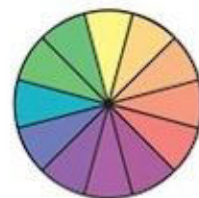
hue



secondary



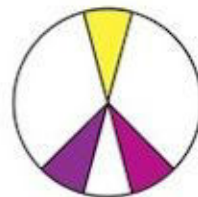
complementary



tint



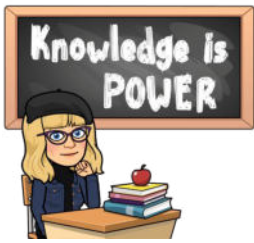
intermediate



split complementary



shade



Color Theory Terms and Definitions

Color - Element of art derived from reflected light. We see color because light waves are reflected from objects to your eyes.

- **Color wheel** - color spectrum bent into a circle.
- **Primary colors** - The most basic colors on the color wheel, red, yellow and blue. These colors cannot be made by mixing.
- **Secondary colors** - colors that are made by mixing two primary colors together. Orange, green and violet (purple).
- **Tertiary colors** - colors that are made by mixing a primary color with a secondary color.
- **Hue** - the name of the color.
- **Intensity** - the brightness or dullness of a color. DO NOT CONFUSE WITH VALUE.
- **Color value** - the darkness or lightness of a color. Ex pink is a tint of red.
- **Tints** - are created by adding white to a color. (In watercolor just add more water to get a lighter tint!)
- **Shades** - are created by adding black to a color.
- **Optical color** - color that people actually perceive- also called local color.
- **Arbitrary color** - colors chosen by the artist to express feelings or mood.

VIDEO 1

You will need to pay close attention to how this is done! You can stop and start these instructions as needed. A handout is also provided.



Important Tips

Make sure you are drawing lines from one side of the piece of pie to the other. DON'T just draw a bunch of shapes on the inside or it won't work.

Keep it simple. A bunch of narrow skinny lines will make it hard to paint.

Label the colors very lightly in the order of the color wheel because we all make mistakes! This will help prevent you from painting in the wrong sections.

Keep a piece of scrap paper out to test your colors on before you paint.

Don't leave your paint brush standing in the water or it will get bent.

Change your water frequently or you'll end up with mud!



VIDEO 2

This video goes over how to set up and paint your Mandala drawing. Remember to lightly label the colors! Erase before you paint!!!!



Self Assessment Check List

Did you follow all instructions?

Did you erase pencil lines before you began painting?

Does your Mandala demonstrate your understanding of tints and shades?

Does your Mandala show improvement in your watercolor painting skills?

Is your first and last name on the back?

