

# Color Theory

...

# Intro

Hue: the name of a color on the color wheel

Primary Colors: red, blue, yellow;  
you can mix them to make other colors.

Secondary Colors: orange, green, purple;  
made from mixing 2 primary colors  
together.

~ red + yellow = orange

~ yellow + blue = green

~ red + blue = purple



# TINTS AND SHADES

Tint: a color mixed with white

.Shade: a color mixed with black



# COLOR SCHEMES

Color Scheme: groups of colors on the color wheel

Complementary: a pair of colors direct across from each other on the color wheel.

Analogous: a group of colors that are next to each other on the color wheel.

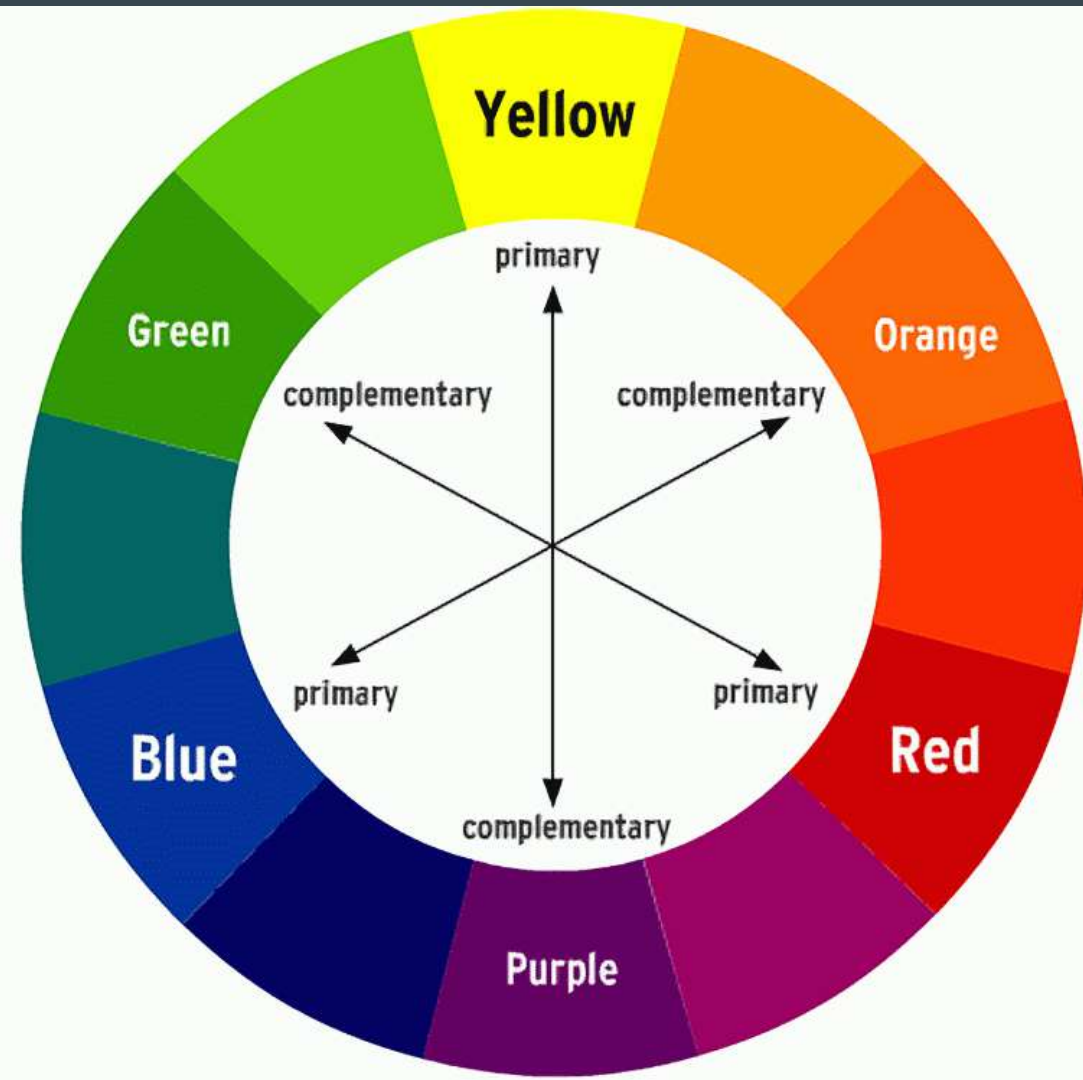
Monochromatic: a group of values (tints and shades) of one color.

**COLOR**

**COMPLEMENTARY**

**ANALOGOUS**

**MONOCHROMATIC**



**Monochromatic:**  
tints and shades of a color

**Analogous:**  
2 primaries and  
whatever they mix to make

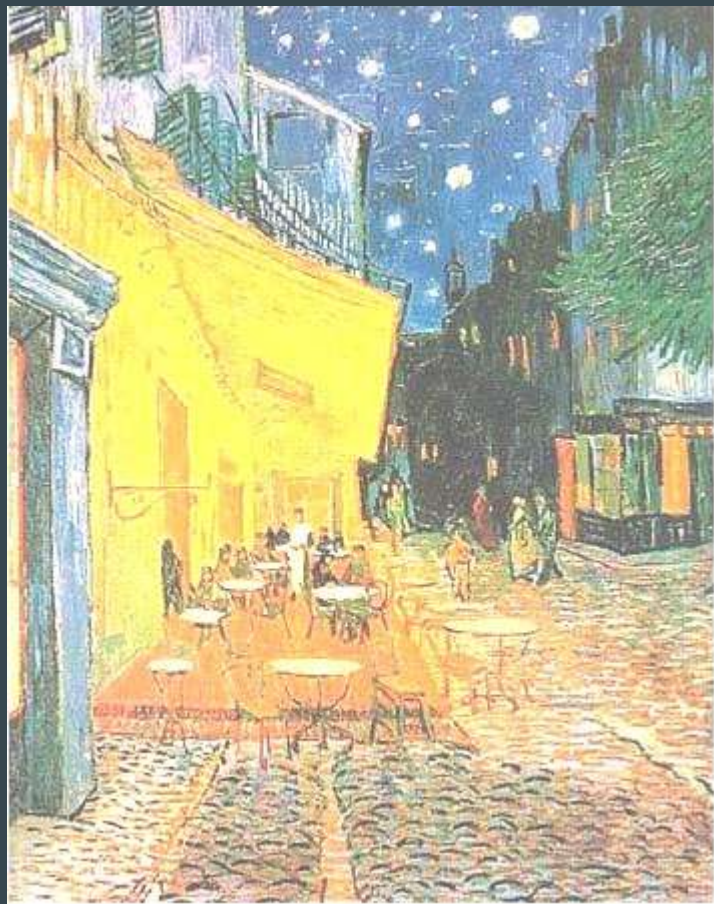
**Complementary:**  
1 primary matched with  
the other 2 primaries  
mixed together

# COLOR AND MOOD





# COLOR AND MOOD



**Guess the color scheme**



































©Taylor Marles Photography

[taylortakesataste.com](http://taylortakesataste.com)



