

Color Temperature And White Balance

...

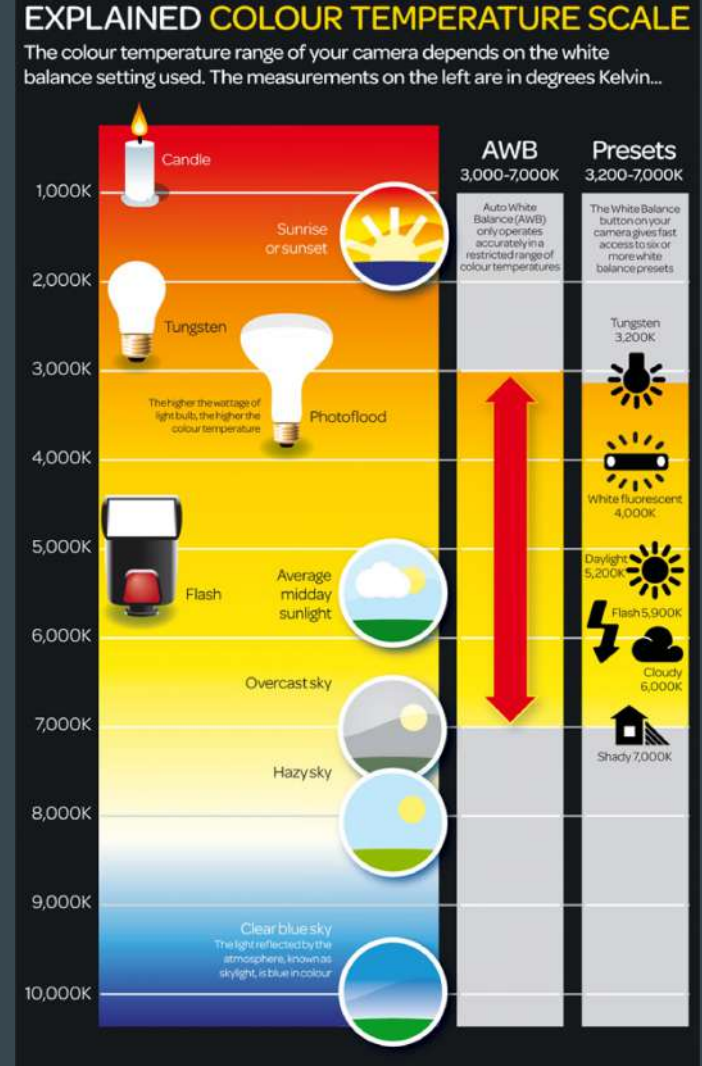
The temperature of light is measured in Kelvins

The lower the number, the warmer the light.

The higher the number, the cooler/bluer the light.

Daylight is 5200k.

Cameras are calibrated to daylight, and if you are in other conditions, you must change the preset (see right) on your camera to compensate. It may be in your menu or a button on the back of the camera.



Alternatives to changing the white balance in the camera:

- 1) Shoot in RAW and then use Adobe Camera Raw to make a custom white balance. Shooting in RAW is what many professionals do and gives you the greatest control over the white balance.
- 2) Make color adjustments in Photoshop to correct the white balance. This doesn't always work that well.