

# Your Child, Your School, Your Choice

APPLY BEFORE FEB. 14

Get started **[cmschoice.org](https://cmschoice.org)**



2017-2018  
**SCHOOL  
CHOICE**

# 3 Questions

**What options does CMS School Choice offer?**

**How does my family apply?**

**How does the lottery work?**



**2017–2018  
SCHOOL CHOICE**

# Q: What options does CMS School Choice offer to families?



# CMS offers you high quality choices

**A: all children enrolled in CMS are guaranteed a seat in an assigned home school.**

**CMS School Choice educational options offer additional school choices that match your child's interests, talents, and potential.**



**[cmschoice.org](https://cmschoice.org)**



# An array of themes and learning approaches

## **Business & Entrepreneurship**

programs of study that align with business and industry needs to enhance 21st century leadership skills and cultivate an entrepreneurial spirit in students.

## **Early College**

accelerated learning opportunities in partnership with the University of North Carolina at Charlotte that provide students the opportunity to take college courses while completing their high school requirements.

## **International Baccalaureate (IB)**

a rigorous program of study that focuses on critical thinking and international mindedness while developing cultural understanding, language development and volunteerism.

## **Middle College**

accelerated learning opportunities in partnership with Central Piedmont Community College that provide students the opportunity to take college courses while completing their high school requirements.

## **World Languages and Language Immersion**

high academic achievement in literacy and proficiency in dual languages while enhancing the level of cultural awareness among students.

## **Science, Technology, Engineering, Arts, & Math**

integrates the content and skills of science, technology, engineering, arts and mathematics. Additionally, STEAM includes engagement in inquiry, logical reasoning, collaboration, and investigation.

## **Visual & Performing Arts**

The focus of this program is to develop a student's talents and passion for the arts. As an integral part of a strong academic program, the Arts are approached through Arts education, integration and exposure.



# An array of themes and learning approaches

## **Blended & Virtual Learning**

a formal approach to education that involves full or partial online delivery of content with some element of student control over the time, place, path and/or pace of their learning.

## **Learning Immersion & Talent Development**

focused on instructional strategies for advanced learners and rigorous curriculum. Students are expected to use analytical and critical thinking skills to solve real-world problems.

## **Military, Global Leadership & Public Safety**

in addition to JROTC, rising 9<sup>th</sup> grade students have an opportunity to pursue a pathway in Public Service. Students will have hands-on, personalized instruction in the skills needed to succeed in law enforcement, firefighting and emergency service.

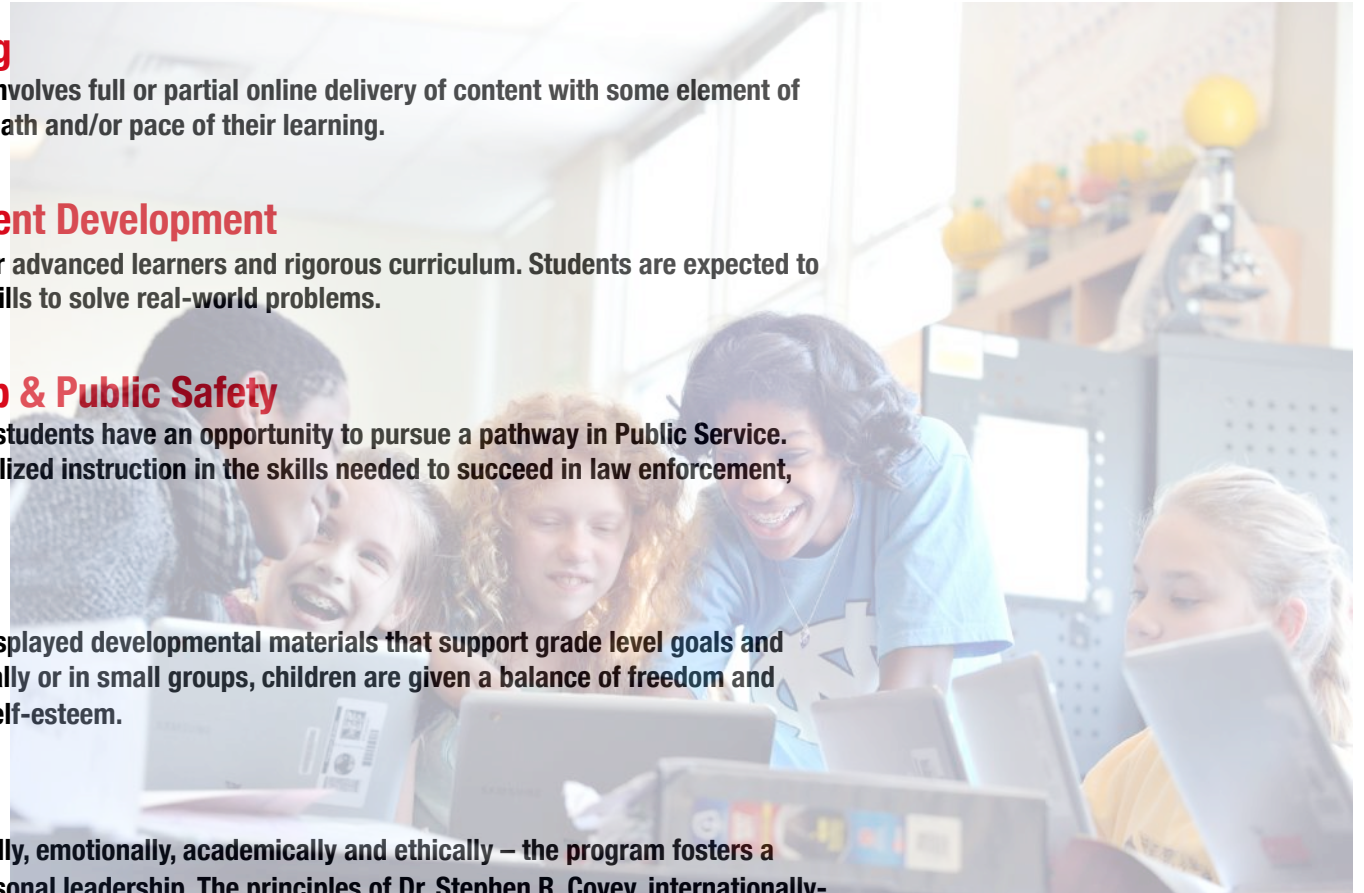
## **Montessori**

specially designed and attractively displayed developmental materials that support grade level goals and learning objectives. Working individually or in small groups, children are given a balance of freedom and responsibility to develop a sense of self-esteem.

## **Traditional**

by developing the whole child – socially, emotionally, academically and ethically – the program fosters a climate of principle-centered and personal leadership. The principles of Dr. Stephen R. Covey, internationally-renowned consultant and author of “The 7 Habits of Highly Effective People” and “First Things First”, are embedded in the school’s culture and guide the students, faculty and staff in building the leadership model.

**[cmschoice.org](http://cmschoice.org)**

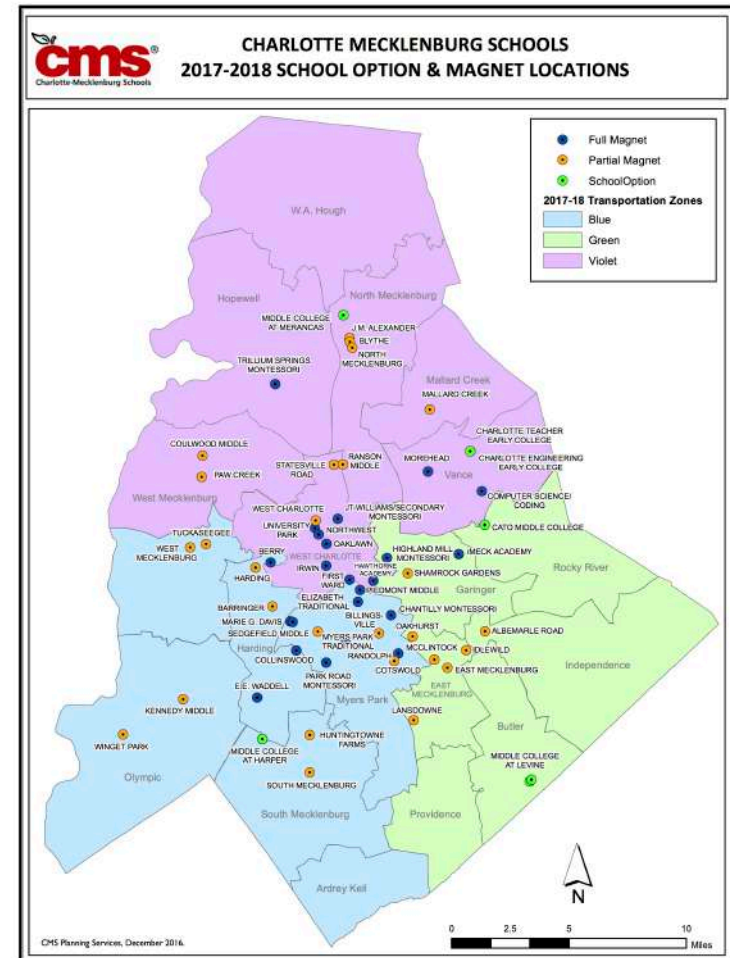


# CMS offers choices close to you

**CMS strives to offer an equal distribution of areas of study, grade levels and school quality across Charlotte-Mecklenburg.**

**Students admitted to CMS School Choice options and magnets are **guaranteed transportation** to schools within their transportation zone.**

**[cmschoice.org](https://cmschoice.org)**



**Q: How does my family  
apply to enroll in  
CMS School Choice?**



# Lottery Steps

## ENROLL

children  
new to CMS  
by Jan. 24

1

## RESEARCH

CMS School  
Choice options

2

## VISIT

schools that  
interest you and  
your child

3

## SELECT

your top three  
preferences

4

## SUBMIT

lottery  
application  
between  
Jan. 6 – Feb. 14

5



2017–2018  
**SCHOOL CHOICE**

OPENS JANUARY 6th

Get started **cmschoice.org**

**cmschoice.org**



# Step 1 – Enroll Your Child in CMS

**Families new to CMS who wish to participate in the 2017-2018 School Choice lottery must enroll their children with the CMS Student Placement Office by January 24, 2017.**

**You will receive a Personal Identification Number (PIN) by US mail.**

**[cmschoice.org](http://cmschoice.org)**



# Step 2 - Research Your Options

**Learn about the many offerings within CMS Options and Magnet Schools.**

**Discuss these options with your family to find the best match.**



**[cmschoice.org](https://cmschoice.org)**



# Step 3 - Visit

**Visit schools and attend information sessions.**

**Experience these schools, ask questions and become familiar with your options.**

**See an open house, information session schedules and get school contact information at [cmschoice.org](http://cmschoice.org).**

**[cmschoice.org](http://cmschoice.org)**



# Step 4 - Select

Among the options available, **choose three schools that best match** your child's unique interests and talents.



School Choice 1 \_\_\_\_\_



School Choice 2 \_\_\_\_\_



School Choice 3 \_\_\_\_\_

# Step 5 - Submit

**Submit your application for your three choice schools via the CMS School Choice lottery.**

**Round one of the lottery opens **Jan 6, 2017.****



**[cmschoice.org](http://cmschoice.org)**



# Q: How does the CMS School Choice lottery work?

# The goal is high quality education for all students

**Studies have shown that all students learn better in diverse schools.**

**To support a high quality education led by choice for ALL students in Charlotte-Mecklenburg, CMS seeks to provide access and choices for families from every socio-economic background.**

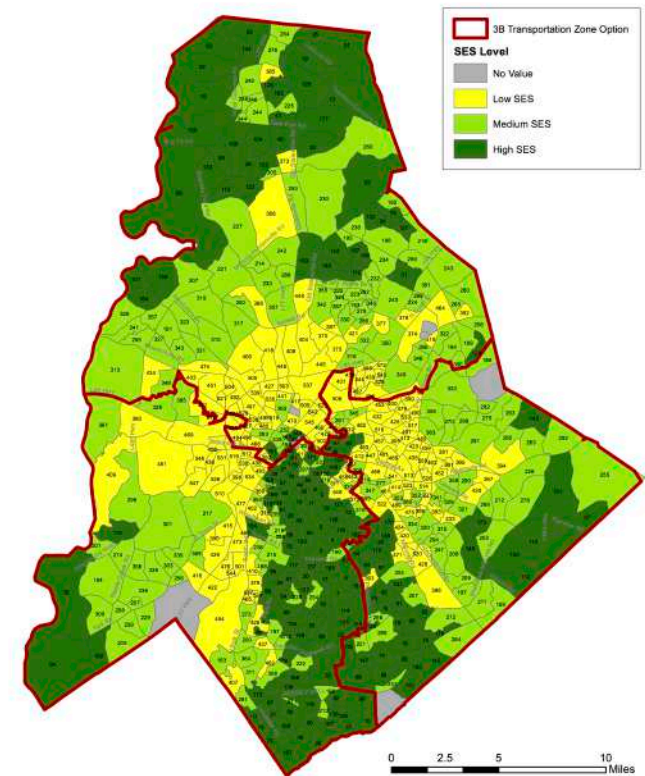


**[cmschoice.org](https://cmschoice.org)**



# Socio Economic Status (SES)

- CMS seeks to increase equity, maximize resources, and reduce the number of schools with high concentrations of poverty/need.
- Socioeconomic Status (SES) is considered in student assignment because many SES factors influence the overall learning environment.
- CMS used Census data to determine SES of block groups, the smallest geographic unit of analysis available. Families will be asked to provide additional information.
- The combination of Census data and family information help to determine an individual student's SES priority in the lottery.
- School options and magnets seats will be allocated across SES categories to achieve the greatest diversity possible.
- The lottery will seek to match student SES priority with like SES seats.





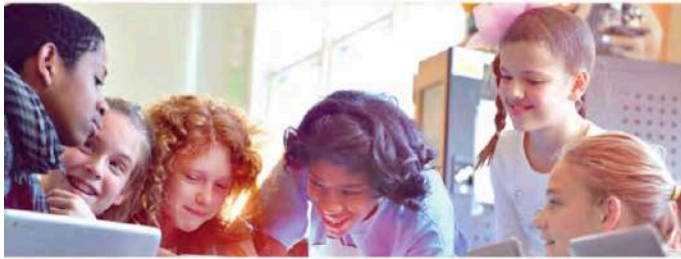
# Get Started

Go to  
[cmschoice.org](https://cmschoice.org)



[cmschoice.org](https://cmschoice.org)





# Your Child, Your School, Your Choice

APPLY BEFORE FEB. 14

Get started **cmschoice.org**



2017-2018  
**SCHOOL  
CHOICE**