

Always  
choose  
Kindness







*Every day*

*is a*

*fresh  
start*



You are kind

You are smart

You are important







Practice

makes

Progress



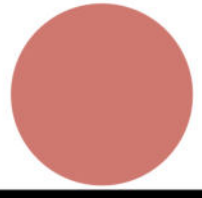


LET'S ROOT FOR EACH OTHER





# PUNCTUATION



---

## *Full Stop*

Used to mark the end of a declarative or imperative sentence.



---

## *Comma*

Used to separate parts of a sentence.



---

## *Exclamation Mark*

Used to show strong emotion or give a command.



---

## *Question Mark*

Used at the end of an interrogative sentence.



---

## *Hyphen*

Used to connect two words or parts of a word.



---

## *Ellipsis*

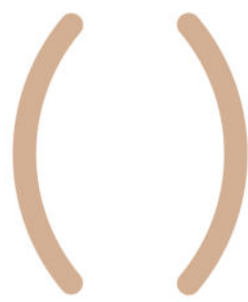
Used to indicate that something has been omitted.



---

## *Ampersand*

Used in place of the word "and".



---

## *Parenthesis*

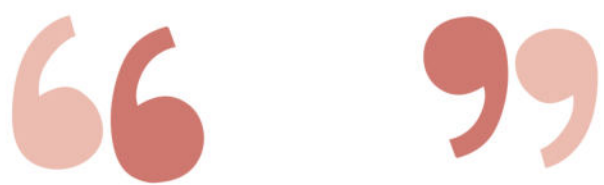
Used to add additional information.



---

## *Apostrophe*

Used for contractions and possessives.



---

## *Quotation Marks*

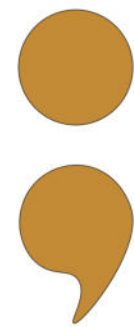
Used to indicate the beginning and end of a quote.



---

## *Colon*

Used to give emphasis, present dialogue, and introduce lists or texts.



---

## *Semicolon*

Used to join two related independent clauses in place of a comma or conjunction.



Always Remember:

You matter

You belong here

You're doing great

You can do anything

I believe in you

A series of black lines radiating outwards from the bottom of the text 'I believe in you', creating a sunburst or starburst effect.

Failure

is great

Feedback