



Clarenceville School District

ESL Program

HANDBOOK



Clarenceville ESL Program Handbook

Table of Contents

I.	Introduction.....	4
II.	Definition of EL.....	5
III.	Legal Responsibilities	
	A. Title I & Title III Requirements.....	5-7
	B. Federal Law	8
IV.	Procedures	
	A. Registration/Identification of ELs.....	9
	B. Initial Assessment of ELs	9
	C. Eligibility for ESL Services	10
	D. Exiting from Title III/ESL/Bilingual Program.	10
	E. Monitoring FLEP Students	11
	F. Placement in ESL Program.....	11-12
	G. Parent Notification	13
	H. ELs who are Struggling Learners.....	13
	I. Student Folder Content and CA-60.....	14
V.	Staff	
	A. Role of ESL Teachers	14
	B. Role of ESL Paraprofessionals	14
	C. Role of Mainstream General Education Teacher.....	15
	D. Role of Special Services Staff.....	15
VI.	Parental Involvement	
	A. Parental Communications/Interpreter Services.....	16
	B. Code of Conduct	17
VII.	Personnel Practices	
	A. Posting.....	18
	B. Professional Learning	18
VIII.	Program Evaluation	18

APPENDIX A	Home Language Survey Questions	19
APPENDIX B	Parental Notification Letter & Parent Waiver	20-30
APPENDIX C	Descriptions of English Language Proficiency Levels	31-33
APPENDIX D	Complaints Regarding School Personnel.....	34-35
APPENDIX E	Definitions	36-39
APPENDIX F	Guidelines	40
APPENDIX G	Title III Funds.....	41-42
APPENDIX H	Language Instruction Educational Program.....	43-46
APPENDIX I	Non-discriminatory Practices	47
APPENDIX J	Program Entry and Exit Summary Chart.....	48-55

I. INTRODUCTION

Mission Statement

Clarenceville Mission Statement

The mission of the Clarenceville School District is to provide individuals a variety of educational opportunities that enable them to become lifelong learners and productive members of a changing world.

The Clarenceville School District seeks to provide every child, regardless of national origin or native language, quality, and meaningful educational instruction. Consequently, students who are English Learners (ELs) are provided instructional services through an English as a Second Language (ESL) program which is designed to meet their unique needs.

The Clarenceville School District has prepared this handbook of program policies and procedures to ensure that the ESL/Title III program in the district is consistent throughout the district.

The information contained herein has been compiled using the following sources:

Suzanne Toohey

Consultant, ESL/Title III, Oakland Schools

Michigan Department of Education

Office of School Improvement

Title III Handbook

The following staff members are acknowledged for their efforts in developing this handbook:

Renee Valentine, Asst. Superintendent of Learning Services

Karen Morrison, ESL Teacher

II. DEFINITION OF ENGLISH LEARNERS (ELs)

ESSA Definition of an "English Learner" Student

The term "English learner," when used with respect to an individual, means an individual:

- (A) who is aged 3 through 21;
- (B) who is enrolled or preparing to enroll in an elementary school or secondary school;
- (C)(i) who was not born in the United States or whose native language is a language other than English;
 - (ii)(I) who is a Native American or Alaska Native, or a native resident of the outlying areas; and
 - (II) who comes from an environment where a language other than English has had a significant impact on the individual's level of English language proficiency; or
 - (iii) who is migratory, whose native language is a language other than English, and who comes from an environment where a language other than English is dominant; and
- (D) whose difficulties in speaking, reading, writing, or understanding the English language may be sufficient to deny the individual —
 - (i) the ability to meet the challenging State academic standards;
 - (ii) the ability to successfully achieve in classrooms where the language of instruction is English; or
 - (iii) the opportunity to participate fully in society. (ESEA Section 8101(20))

To be classified as EL, an individual must meet the criteria of A, B, C and D in the definition above. To meet the criteria for C, an individual can meet the criteria of any of i, ii or iii. If the criterion to meet C is ii, then the individual must meet the criteria of both I and II. To meet the criteria for D, an individual must be denied one of the three listed (i or ii or iii).

III. LEGAL RESPONSIBILITIES

A. Title I & Title III

PROGRAMS OF ENGLISH LEARNERS

Under Title VI of the Civil Rights Act of 1964 and the EEOA, all States and LEAs must ensure that ELs can participate meaningfully and equally in educational programs and services. Students who meet the protocol requirements as English Learners (ELs) must be provided a language assistance program services, in addition to the basic/core education services (adopted by the local board of education) that all students in the LEA receive. This language assistance program services must provide meaningful access to the core curriculum and provide direct English language instruction. The intensity of language assistance program services provided is directly related to the individual student's level of proficiency. The less English proficiency a student has, the more intense his or her program of language assistance program services should be. The language assistance program services could include research-based models such as bilingual education, ESL/ELD programs, and/or sheltered instruction. These federally required language assistance program services ensure that ELs have equitable access to the basic, local board of education-adopted curriculum provided to all students, and acquire English language proficiency.

To meet their obligations under Title VI and the EEOA, LEAs must, for example:

- Identify and assess all potential EL students in a timely, valid, and reliable manner;
- Provide EL students with a language assistance program that is educationally sound and proven successful, consistent with *Castañeda v. Pickard* and the Supreme Court decision in *Lau v. Nichols*;

- Provide sufficiently well prepared and trained staff and support the language assistance programs for EL students;
- Ensure that EL students have equal opportunities to meaningfully participate in all curricular and extracurricular activities;
- Avoid unnecessary segregation of EL students;
- Ensure that EL students who have or are suspected of having a disability under the Individuals with Disabilities Education Act (IDEA) or Section 504 of the Rehabilitation Act of 1973 are identified, located, and evaluated in a timely manner and that the language needs of students who need special education and disability related services because of their disability are considered in evaluations and delivery of services;
- Meet the needs of EL students who opt out of language assistance programs;
- Monitor and evaluate EL students in language assistance programs to ensure their progress with respect to acquiring English proficiency and grade level content knowledge, exit EL students from language assistance programs when they are proficient in English, and monitor exited students to ensure they were not prematurely exited and that any academic deficits incurred in the language assistance program have been remedied;
- Evaluate the effectiveness of a school district’s language assistance program(s) to ensure that EL students in each program acquire English proficiency and that each program is reasonably calculated¹¹ to allow EL students to attain parity of participation in the standard instructional program within a reasonable period of time; and
- Ensure meaningful communication with parents of English Learners.

WHAT YOU NEED TO KNOW

Title III funds are to be used to provide language instruction educational programs — defined as courses in which EL students are placed for the purpose of attaining English proficiency, while meeting challenging State academic content and student academic achievement standards. These programs may make use of both English and the child’s native language to enable the child to develop and attain English proficiency, but school districts are required to “use approaches and methodologies based on scientifically-based research.” Each school or district using Title III funds must implement an effective means of outreach to parents of EL children. They must inform parents about how they can be active participants in assisting their children to learn English, achieve at high levels in core academic subjects and meet State standards.

Title III Schools and School Districts Must:

- Describe in their Title III application to the state how the district has consulted with teachers, researchers, administrators, and parents, and others in developing their Title III plan.
- Inform parents of a child identified for participation in a Title III program within 30 days after the beginning of the school year. For a child who enters school after the beginning of the school year, the school must inform parents within two weeks of the child's placement in such a program.
- Communicate with parents in an understandable and uniform format, which means communicating the same information to all parents, and in a method that is effective.

Title III funds may be used for supplementing NOT supplanting school district and/or school activities. (See APPENDIX G)

What Academic Information Does Your School District Have to Track About Their EL Students?

- Must screen each EL student upon enrollment with the WIDA Screener.
- Must assess each student who qualifies for and receives service each year using the WIDA ACCESS for ELLs.
- Title I requires that States and Local Education Agencies (LEAs) annually report on ELs' progress in achieving English language proficiency, attainment of English language proficiency, academic achievement, and high school graduation rates. (ESEA Section 1111(h)(1), (h)(2)). Under Title III, there are additional reporting requirements. LEAs must report to their States on:
 - Title III programs and activities
 - Number and percentage of ELs making progress toward English language proficiency
 - Number and percentage of ELs who attain proficiency and exit LIEPs
 - Number and percentage of former ELs who meet academic content standards (for 4 years)
 - Number and percentage of ELs who have not exited LIEPs after 5 years as an EL
 - Number and percentage of ELs with IEPs

Assessments Required of EL Students:

Title I Law requires that all EL students are assessed annually.

(b)Academic Standards, Academic Assessments, and Accountability –

(7)Academic Assessments of English Language Proficiency - Each state plan shall demonstrate that local educational agencies in the state will, beginning not later than school year 2002–2003, provide for an annual assessment of English proficiency (measuring students' oral language, reading, and writing skills in English) of all students with limited English proficiency in the schools served by the state educational agency. (NCLB/ESEA Title I, Section. 1111(b)(7))

- ESSA requires states:
 - to the extent practical, provide content area assessments in an appropriate language and form for ELs (ESEA Section 1111(b)(2)(B)(vii)(III))
 - identify languages present to a significant extent in the state for which assessments are needed but not available and then work to develop those assessments (ESEA Section 1111(b)(2)(F))
- ESSA allows states:
 - to provide partial exclusion from content area assessment participation and accountability for ELs enrolled in the US for 12 months or less (ESEA Section 1111(b)(3)(A))
- Michigan has adopted the following exceptions for Newcomer ELs
 - **Year one** (living in the US for 12 months or less)
 - exempt from ELA assessment, student takes English Language Proficiency Assessment and is included in English Language Progress indicator

- **Year two**
 - student takes ELA assessment and ELP assessment and is included in English Language Progress indicator
- **Year three**
 - Student takes ELA assessment and ELP assessment and is included in Academic Growth and English Language Progress indicators
- **Year four**
 - Student takes ELA and ELP assessments and is included in Academic Proficiency, Academic Growth, and English Language Progress indicators

B. Federal Law

There exists a substantial body of Federal law which establishes the rights of the LEP student and which defines the legal responsibilities of school districts serving these students. Note: the term Limited English Proficient (LEP) is a historic term where English Learner (EL) is currently accepted term and is therefore used throughout this document. EL is meant to counter the negative connotations of Limited English Proficient. Administrators and school boards who are responsible for local policies and programs can turn for guidance and direction to this body of law. It includes the following:

1868 Constitution of the United States, Fourteenth Amendment

“... No State shall ... deny to any person within its jurisdiction the equal protection of the laws.”

1964 Title VI of the Civil Rights Act of 1964

“No person in the United States shall, on the ground of race, color, or national origin be denied the benefits of, or be subject to discrimination under any program or activity receiving Federal financial assistance.”

Two U.S. Supreme Court rulings, one interpreting the Fourteenth Amendment and one interpreting the Civil Rights Act of 1964, have exercised considerable influence over the educational rights of language minority students. These cases may be summarized as follows:

1974 Lau v. Nichols

The U.S. Supreme Court ruled that a school district’s failure to provide English language instruction to LEP students denied them meaningful opportunity to participate in the district’s educational program in violation of Title VI of Civil Rights Act of 1964; the Court further noted that equality of opportunity is not provided by giving the LEP student the same facilities, text books, teachers, and curriculum which non-LEP students receive.

1982 Plyler v. Doe

The U.S. Supreme Court ruled that the Fourteenth Amendment to the U.S. Constitution prohibits states from denying a free public education to undocumented immigrant children regardless of their immigrant status. The Court emphatically declared that school systems are not agents for enforcing immigration law and determined that the burden undocumented aliens may place on an educational system is not an accepted argument for excluding or denying educational service to any student.

IV. PROCEDURES

The following procedures are established for Clarenceville School District to meet the requirements of Title I and Title III.

A. Registration/Identification Using Home Language Survey

The Home Language Survey approved by the Michigan Department of Education (APPENDIX A) is included in the Clarenceville School District registration form. It is to be completed at the time of registration. The secretary in each building is responsible for ensuring that a home language survey is completed for all students at the time of enrollment. The completed registration forms shall be placed in student's permanent (CA-60) files.

If a student is identified as speaking a primary language other than English or as having a language other than English spoken in the home, as reported on the Home Language Survey, the student may be eligible for ESL services. If so, the ESL teacher in the building of attendance will be notified. The ESL staff will arrange for a prompt assessment of the student to determine eligibility for ESL services.

B. Initial Assessment for Program Eligibility

Within ten (10) school days of enrollment in our district, a student who is identified as potentially eligible on the Home Language Survey must be assessed to determine if they are eligible for ESL services. Assessments assess a student's language skills in listening, speaking, reading, writing, and comprehending in English using the WIDA ACCESS for ELLs or the WIDA Screener.

Staff is also encouraged to assess the reading and math abilities of the student using other standardized instruments to address learning needs across the content areas.

WIDA ACCESS for ELLs/WIDA Screener & Levels of Proficiency

The following chart shows level of proficiency correlated to the WIDA Standards. It may assist in determining the level of the student's proficiency and the student's placement into grade level or courses with appropriate ESL language and academic support.

WIDA ACCESS for ELLs/WIDA Screener Score	Proficiency Levels WIDA Standards	Optional Multiple Indicators
6	Reaching	Early literacy assessment approved by MDE AIMSweb – both CBM and MAZE subtests
5 – 5.9	Bridging	DIBELS Next Discovery Education Assessments DRA : Developmental Reading Assessment version 2
4 – 4.9	Expanding	Fountas & Pinnell iReady Diagnostic MLPP : Michigan Literacy Progress Profile NWEA : Northwest Evaluation Association
3 – 3.9	Developing	Star Early Literacy PSAT or SAT
2 – 2.9	Emerging	QRI-5 : Qualitative Reading Inventory Scantron Performance Series SRI : Scholastic Reading Inventory
0 – 1.9	Entering	Star Early Literacy Star Reading Gates McGinitie* ITBS : Iowa Test of Basic Skills* Terra Nova* <small>*Italicized assessments are norm referenced and used only for exiting purposes. Non-italicized assessments (which are criterion-based, or both norm-referenced and criterion-based) may be used for entrance and exit. All reading assessments administered must include the comprehension subtests.</small>

C. Eligibility for ESL Program Services

A student who scores Entering through Bridging on the WIDA ACCESS ELLs or WIDA Screener is eligible for ESL Program Support. For a student scoring Reaching to continue receiving ESL support services, the district takes into account additional multiple academic criteria as noted in the chart.

D. Exiting from ESL Program Services

Scores from the WIDA ACCESS for ELLs are necessary, but not sufficient, for exiting students from the ESL program. A student who meets the minimum criteria established in the Michigan Department of Education English Learner Program Entrance and Exit Protocol may be exited from the ESL Program through a placement team review process. Students exited from the ESL Program must also be exited from the program in the MSDS and are then considered FEL (Former English Learner) for four years. FEL academic performance must be monitored for four (4) years. Criteria used to exit a student will be placed in the student's CA 60.

E. Monitoring Former English Learners (FELs)

The placement team who reviews the criteria for a student to exit from the program also determines if the student needs support services during the transition to the regular education program. Additionally, an ESL staff member is designated to monitor the student's progress (such as grades, attendance, and standardized test scores). The designated staff member assesses the student's progress. The ESL teacher will annually review a student's DRA scores, NWEA scores, state assessment, and grades to monitor FEL students. The ESL teacher may also confer with the general education teacher for more information.

If, during the four year monitoring period, it appears that the student is not succeeding in the regular education program, the staffing team will meet to determine if further assessment of the student is warranted, if the student will be reentered into the ESL program, or if other services are appropriate.

A record of monitoring, as well as any placement changes resulting from the monitoring will be placed in the student's CA-60 ESL files.

F. Placement in ESL Program

The Clarenceville School District provides an instructional program to meet the language and academic content needs of English Learners (ELs) enrolled in the district. The instructional needs of students at different levels of language proficiency and prior schooling are met differently. Below is the guide for Title III program instruction described by level of language proficiency and level of instruction.

The Clarenceville School District's Title ESL program provides language and academic content support to ELs through: (Select the supports offered by your district and designate the grade level where it is offered)

- English as a Second Language Instruction
- Math Intervention and Reading Intervention Support (AARI and LLI)

Language Instruction Educational Program (LIEP) Description (see APPENDIX H)

ENTERING/ Level 1:

Eligibility criteria: *WIDA ACCESS for ELLs Score 0 – 1.9*

Elementary (Grades 1-5):

40 – 60 minutes/2 – 3 days a week by a certified ESL/SIOP/WIDA endorsed/trained teacher

Middle School (Grades 6-8):

53 minutes/5 days a week by a certified ESL/SIOP/WIDA endorsed/trained teacher

High School (Grades 9-12):

63 min on M,W,F and 50 min on Tues & Thurs by a certified ESL/SIOP/WIDA endorsed/trained teacher

BEGINNING/Level 2:

Eligibility criteria: *WIDA ACCESS for ELLs Score 2 – 2.9*

Elementary (Grades 1-5):

40 – 60 minutes/2 – 3 days a week by a certified ESL/SIOP/WIDA endorsed/trained teacher

Middle School (Grades 6-8):

53 minutes/5 days a week by a certified ESL/SIOP/WIDA endorsed/trained teacher

High School (Grades 9-12):

63 min on M,W,F and 50 min on Tues & Thurs by a certified ESL/SIOP/WIDA endorsed/trained teacher

DEVELOPING/Level 3:**Eligibility criteria:** *WIDA ACCESS for ELLs Score 3 – 3.9***Additional district criteria:** DRA2, DIBELS NEXT, NWEA, state assessments**Elementary (Grades 1-5):**

40 – 60 minutes/2 – 3 days a week by a certified ESL/SIOP/WIDA endorsed/trained teacher

Middle School (Grades 6-8):

53 minutes/5 days a week by a certified ESL/SIOP/WIDA endorsed/trained teacher

High School (Grades 9-12):

63 min on M,W,F and 50 min on Tues & Thurs by a certified ESL/SIOP/WIDA endorsed/trained teacher

EXPANDING/Level 4:**Eligibility criteria:** *WIDA ACCESS for ELLs Score 4 – 4.9***Additional district criteria:** DRA2, DIBELS NEXT, NWEA, state assessments**Elementary (Grades 1-5):**

40 – 60 minutes/2 – 3 days a week by a certified ESL/SIOP/WIDA endorsed/trained teacher

Middle School (Grades 6-8):

53 minutes/5 days a week by a certified ESL/SIOP/WIDA endorsed/trained teacher

High School (Grades 9-12):

63 min on M,W,F and 50 min on Tues & Thurs by a certified ESL/SIOP/WIDA endorsed/trained teacher

BRIDGING/Level 5:**Eligibility criteria:** *WIDA ACCESS for ELLs Score 5 – 5.9***Additional district criteria:** DRA2, DIBELS NEXT, NWEA, state assessments**Elementary (Grades 1-5):**

40 – 60 minutes/2 – 3 days a week by a certified ESL/SIOP/WIDA endorsed/trained teacher

Middle School (Grades 6-8):

53 minutes/5 days a week by a certified ESL/SIOP/WIDA endorsed/trained teacher

High School (Grades 9-12):

63 min on M,W,F and 50 min on Tues & Thurs by a certified ESL/SIOP/WIDA endorsed/trained teacher

REACHING/Level 6:**Eligibility criteria:** *WIDA ACCESS for ELLs Score 6***Additional district criteria:** DRA2, NWEA, state assessments**Elementary (Grades 1-5):**

40 – 60 minutes/2 – 3 days a week by a certified ESL/SIOP/WIDA endorsed/trained teacher

Middle School (Grades 6-8):

53 minutes/5 days a week by a certified ESL/SIOP/WIDA endorsed/trained teacher

High School (Grades 9-12):

63 min on M,W,F and 50 min on Tues & Thurs by a certified ESL/SIOP/WIDA endorsed/trained teacher

G. Parental Notification (See APPENDIX B)

Clarenceville School District must inform parents of English Learners (ELs) identified for participation in the district's Title III/ESL program.

- no later than 30 days after the beginning of the school year for students who enter at the start of the school year.
- within the first two weeks (10 school days) of attendance for children who have not been identified as English Learners (ELs) prior to the beginning of the school year.

Parent Notification letters are available in the following languages: Spanish

School Districts Must Inform Parents of:

- The reasons for identifying their child as an English Learner and for placing their child in a language instruction educational program;
- The child's current level of English proficiency, including how the level was assessed and the status of the child's academic achievement;
- The method of instruction that will be used in the program, including a description of all language programs;
- How the program will meet the educational strengths and needs of the child;
- How the program will help the child learn English and meet academic achievement standards;
- How the program will meet the objectives of an individualized education program for a child with a disability;
- The program exit requirements, including when the transition will take place and when graduation from secondary school is expected; and
- The parents' rights, including written guidance that (A) specifies the right to have their child immediately removed from a language instruction educational program upon request, (B) describes the options that parents have to decline to enroll their child in such a program or to choose another program or method of instruction, if available, and (C) assists parents in selecting among various programs and methods of instruction, if more than one program or method is offered. (ESEA Section 330 a-d)

H. ELs who are Struggling Learners

When indicators suggest that an English Learner (EL) is having difficulties attaining linguistic, academic and social expectations, which are unrelated to the student's English Language Proficiency, the student will be referred to the school Child Assistance Team (CAT) for intervention strategies. Periodic reviews will be conducted to determine the success or failure of the strategies. The Clarenceville School District has an established protocol for referring students for special education evaluations. These special intervention strategies must be utilized to determine what further strategies may be necessary. These special intervention strategies must be utilized to ensure that a student is not referred for formal Special Education Multidisciplinary Team evaluations when the lack of academic progress is primarily related to language background or a need for more ESL support services. In the event the various strategies are not successful, the student may be referred for a special education evaluation. The student may require an evaluation administered in his/her native language.

I. Student Folder Contents and CA-60

Each English Learner will have a folder maintained by the ESL teacher at the building. The folder and CA-60 will contain:

- Home language survey (ESL file and CA-60) **APPENDIX A**
- Parent notification letter (in CA-60) **APPENDIX B**
- WIDA ACCESS for ELLs & WIDA Screener testing results (ESL File and CA-60)
- Monitoring records
- Possible academic work (writing samples, goals, etc)

V. STAFF Roles

A. ESL/ELD/Bilingual Teachers

The ESL/ELD teacher is certified in his/her teaching area and has an ESL endorsement. The ESL teacher has primary responsibility for providing English language instruction to the EL. The ESL teacher also shares the responsibility with mainstream general education teachers for ensuring that the EL receives content instruction while learning English.

The ESL teacher supports the instruction of the mainstream class by discussing the content using ESL, sheltered or content specific instruction taught in English. The ESL teacher is responsible for language development and content specific instructional support.

ESL teacher:

- provides content instruction and language development;
- assumes the same functions as the mainstream teacher when they are the teacher of record in the classroom;
- meets regularly with the mainstream teacher to determine the academic needs of English Learners enrolled in their classes;
- teaches basic survival skills to the most limited English proficient students;
- assists general education staff about culture and language of the EL and the family;
- provides the mainstream teacher with the cultural and linguistic background of the language minority students in the class;
- works collaboratively with staff to develop curriculum;
- identifies, assesses, teaches, and counsels each EL; and
- provides staff development on English language instruction and cultural awareness.

B. Role of ESL/Bilingual Paraprofessional

The ESL/Bilingual paraprofessional supports and reinforces the English language acquisition and content instruction provided by ESL/Bilingual teacher and mainstream teachers.

Responsibilities of the ESL/Bilingual Paraprofessional are to:

- assist ESL teacher and mainstream teachers in providing content instruction and language development;
- meet regularly with ESL/mainstream teachers to determine the academic needs of ELs
- assist teaching basic survival skills to the most limited English proficient students;
- inform general education staff about culture and language of the ELs and their families;
- provide mainstream teachers with cultural and linguistic background of the ELs in their classes;
- assist in identification, assessment, teaching, and counseling each EL

C. Role of Mainstream General Education Teacher

The mainstream teacher into whose class the student is enrolled has primary responsibility for the instruction of the EL. The student spends a significant part of the day in the mainstream classroom with this teacher and classmates. Because of this, the mainstream teacher is responsible for the delivery of the curriculum to ALL students in his/her class. The mainstream teacher does not accomplish this alone.

The mainstream teacher and the ESL staff are the ones who decide:

- what should be taught;
- how the mainstream class content should be supported by ESL/bilingual staff;
- what the essential concepts in the lessons are;
- how lessons should be differentiated and accommodated;
- how to make appropriate accommodations for assessments; and
- how to assess achievement.

In addition, the mainstream teacher:

- is a full partner with the ESL staff in educating ELs in his/her class;
- demonstrates sensitivity and awareness of cultural and linguistic differences;
- individualizes instruction to meet the needs of each student;
- uses visuals/hands-on activities to facilitate learning;
- provides materials for the ESL staff that support the mainstream instruction;
- helps language minority students make friends and be part of the social interaction in the classroom;
- promotes intercultural discussion; and,
- suggests the type of help the EL needs to be successful in his/her class to the ESL teacher.

D. Role of Special Services Staff

Special Services staff members are essential for the success of English Learners in elementary, middle, and high schools in Clarenceville School district. Counselors, social workers, and curriculum support personnel are a very new phenomena for many ELs and their families. The role of the special services staff needs to be explained to bilingual parents and students so that the bilingual families will have a complete understanding of that person's role in the school and will be able to utilize his/her expertise.

Support Staff for English Learners:

- work in conjunction with the ESL and mainstream staff to provide appropriate scheduling of students;
- need to develop an awareness of the culture and language abilities of language minority students;
- provide social and academic guidance to help English Learners become familiar with school culture and academic opportunities;
- provide academic information to parents/guardians.
- provide an interpreter if requested/needed for parent meetings

VI. PARENTAL INVOLVEMENT

A. Parental Communication/Interpreter Services

Parents of English Learners will receive readily understood notices of school programs and activities impacting their child's education.

Many bilingual parents need interpreters (translators) to participate in school activities such as registering students and parent/teacher conferences. Certainly, the more informed parents are the more likely it is that they will be able to support their child's learning. However, many teachers and administrators may be unfamiliar with using an interpreter and may consequently be reluctant to make routine use of the parents' native languages. The following suggestions may facilitate successful communication when using an interpreter:

Prior to the Meeting

1. Accurately determine the parents' native language prior to the meeting and identify an interpreter (may be an adult family member) who is fluent in that language. Note that it may be important to determine the particular dialect of the family to use an interpreter who can easily communicate.
2. Send notices for school meetings and conferences home in English on one-side and student's native languages (when possible) on the other. Keep a generic file of these notices with blanks for times and dates.
3. Talk with the interpreter prior to meeting parents to clarify his/her role. In most cases, interpreters should not be active participants in the conversation. Rather, they should simply translate the participant's statements. The teacher or administrator should make it clear to parents at the beginning of the conference that this is the role the interpreter will play. In situations where it is appropriate for interpreters to be active in the conversation (for example, when the interpreter is a bilingual paraprofessional who also works with the student), the teacher or administrator should explicitly invite the interpreter to join in the discussion.
4. Prepare for the meeting by talking with the interpreter about the anticipated content that will be discussed. In this way, interpreters can clarify vocabulary and school terms that may not be familiar.
5. Do not rely on children to interpret for their parents. This reverses the roles in families — parents feel like children and children feel like they have more authority than they should. It is also difficult for most children to translate and children are very reluctant to translate anything negative about themselves to parents. Do not put them in this role.

During the Meeting

1. Show respect to parents by addressing them directly and allowing the interpreter to simply interpret your words. Sit so that you speak directly to the parents rather than to the interpreter. Often, it works well to place the interpreter to your side rather than between you and the parent.
2. Speak at a normal rate and volume.
3. Keep the group limited to a small number of people. Introduce each person and the role each plays in relation to the child.
4. Stop periodically and ask if there are any questions.
5. Support your statements with examples of student work that parents can take with them and examine further.
6. Do whatever you can to encourage parents' further school visits and participation in school activities.

Following the Meeting

1. Clarify any confusing interactions with the interpreter. Ask for feedback and suggestions on the interpreting process from the interpreter.
2. Make a record of significant information discussed. It is helpful to do this in both languages so that parents could have easy access to information. Consider sending a follow-up letter in the language of the parent.

B. Code of Conduct

The Oakland Schools Visual Code of Conduct or translated Clarenceville Code of Conduct will be provided as needed.

VII. PERSONNEL PRACTICES

Professional Learning

ESL staff will meet regularly to update knowledge and skills, obtain additional training, and share information and materials.

ESL staff will have the opportunity to attend conferences and in-services inside and outside the district.

Training for regular education teachers on ESL topics will be provided.

VIII. PROGRAM EVALUATION

A District Evaluation Committee will meet each spring to assess student progress using standardized test scores and writing samples. They will also assess the program's effectiveness, resources and staff needs. This committee will make any necessary program recommendations to the Superintendent, Executive Director of Instruction and the Board of Education. Monitoring data such as district-wide test results, dropout and retention rates, and grades will be included in the periodic program evaluation.

APPENDIX A HOME LANGUAGE SURVEY QUESTIONS

Is your child's native tongue a language other than English?

_____ yes _____ no What is that language? _____

Is the primary language used in your child's home or environment a language other than English?

_____ yes _____ no What is that language? _____



Clarenceville School District

of Oakland and Wayne Counties

20210 Middlebelt Road
Livonia, Michigan 48152-2099
248.919.0400
Fax 248.919.0430
www.clarencevilleschools.org

Paul K. Shepich
Superintendent

David G. Bergeron
Assistant Superintendent
Business/Support Services/Finance

Renee M. Valentine
Assistant Superintendent
Learning Services

Neil A. Thomas
Director
Special Education/Student Services

Date _____ School _____
Student Name _____
WIDA Overall Proficiency Level: _____ WIDA Screener Proficiency Level: _____

Dear Parent or Guardian,

The **Clarenceville School District** is committed to providing instructional and enrichment programs that will meet the needs of all students in our schools. We have developed an **English as a Second Language (ESL)** program of academic instruction that addresses the special English language and content needs of our students. Based on enrollment information, your student is eligible for services that support classroom instruction and provide additional opportunities for your student's academic growth and language proficiency. This letter is intended to clarify information about the program and options for your child.

What are ESL support services?

ESL support services are specialized programs funded by local, state, and federal funds. Each year, we are required by federal legislation (ESEA & ESSA) to inform you of the services we are providing for your child. The purpose is to enable students to read, write, and communicate in the English language as well as learn subject matter at the same time. The teachers are specially trained to help students acquire language and subject matter skills that are based on the state and district curriculum standards and benchmarks. Our testing indicates that our students in the program are making progress at every grade level.

How are students identified as having limited English proficiency?

Many students are potentially eligible for services in the ESL program. Students in kindergarten through second grade are automatically eligible for services if they are identified on the Home Language Survey as having a first language other than English. In all grades, if a language other than English is spoken regularly in the home or if your child's native language is a language other than English (as identified on the Home Language Survey), students will take the WIDA Screener to determine eligibility and placement in the ESL program. For students identified as English Learners, a state language proficiency assessment will be given annually. The state mandates the administration of the English Language Proficiency assessments (WIDA Screener and/or WIDA ACCESS for ELLs) to determine students' listening, speaking, reading, and writing skills. Results determine eligibility for service as well as student progress.

How can I find out my child's language proficiency level?

Your child's proficiency level is located at the top of this letter. Please contact your child's teacher/ESL teacher for a full explanation of your child's scores or progress made.

What types of programs are available?

Clarenceville School District offers an English Language Development program with intensive help for students with little or no English. As the student progresses in English, he or she will transition into the general education program. Students also receive:

- Small group instruction that aims at developing fluency and literacy in English.
- Computer assisted instruction that allows for individual learning, problem solving, and acceleration of students' language and skills.
- Use of students' home language as needed to assist students in understanding and acquiring new concepts in subject areas like math, science, and social studies.
- Provision of additional books, games, and learning activities.
- Opportunities to be included in all district interventions, enrichment, and accelerated programs

Your child has been selected for a program based specifically on his or her learning needs. Please talk to your child's teacher at parent conferences or by making an appointment if you wish specific information about your child's progress.

How do students exit the program?

Our ESL program allows students to progress steadily as they develop English Language Proficiency. Students can leave the program officially in a number of ways:

- The parent has the absolute right to withdraw their son or daughter from ESL services at any time. (Students will still be required to take the annual English Language Proficiency assessment until the student can meet the *Entrance and Exit Criteria* set by the Michigan Department of Education).
- Any student who scores at the proficient levels on the WIDA ACCESS for ELLs and state/district tests will be recommended for exit (as prescribed by the Michigan Department of Education in the *Entrance and Exit Criteria*).

We will monitor student progress for four years following exit from the **ESL** program. Report cards and test results will be used to monitor progress. This information will be used to determine further support for your child. If you need any further information, please contact your child's teacher or school.

It is your right as a parent to withdraw your child from **ESL** services. If you **DO NOT** want your child to receive the services, you can withdraw your child by notifying the school in writing. Please note that our federal government mandates the continued testing of any student, active or parent request for no service, whose home or primary language is other than English, until that student demonstrates proficiency and successfully meets the requirements for exit on the WIDA ACCESS for ELLs annual assessment.

If you need additional information, please contact your child's school.

Sincerely,



Clarenceville School District

of Oakland and Wayne Counties

20210 Middlebelt Road,
Livonia, Michigan 48152-2099

248.919.0400

Fax 248.919.0430

www.clarencevilleschools.org

Paul K. Shepich
Superintendent

David G. Bergeron
Assistant Superintendent
Business/Support
Services/Finance

Renee M. Valentine
Assistant Superintendent
Learning Services

Neil A. Thomas

Fecha _____ Escuela _____

Nombre del Estudiante _____

WIDA Nivel General de Competencia _____ WIDA Screener Nivel de

Competencia _____

Estimado Padre o Guardian,

Clarenceville School District se compromete a proporcionar programas instructivos y de enriquecimiento que satisfacen las necesidades de todos los estudiantes en nuestras escuelas. Nosotros hemos desarrollado un programa de Inglés como Segundo Idioma (ESL) de instrucción académica con atención especial al Idioma Inglés y necesidades de contenido de nuestros estudiantes. Basado en la información de inscripción, su estudiante es elegible para los servicios que apoyan la educación en el salón de clase y proporcionan oportunidades adicionales para el crecimiento académico y competencia del Idioma Inglés del estudiante. Esta carta tiene la intención de aclarar la información del programa y las opciones para su hijo (a).

¿Cuáles son los servicios de ayuda de Inglés como Segundo Idioma (ESL)?

Los servicios del apoyo de ESL son programas especializados con fondos locales, estatales y federales. Cada año, somos requeridos por la legislación federal (ESEA y ESSA) para informarles de los servicios que estamos proporcionando para su hijo (a). El propósito es para ayudar a los estudiantes en leer, escribir, y comunicarse en el idioma de inglés y además aprender el contenido de materias al mismo tiempo. Los maestros están especialmente entrenados para ayudar a los estudiantes adquirir habilidades en el idioma y contenido de materias que están basados en los estándares establecidos por el Estado y el plan de estudios del distrito. Los exámenes indican que nuestros estudiantes en el programa están progresando en cada nivel escolar.

¿Cómo los estudiantes son identificados de tener conocimiento limitado en inglés?

Muchos estudiantes son potencialmente elegibles para los servicios en el programa de ESL. Los estudiantes en kinder hasta el segundo grado son automáticamente elegibles para los servicios si son identificados en la Encuesta del idioma del Hogar y hablan en casa un primer idioma diferente al inglés. En todos los grados, si en la casa hablan otro idioma aparte de inglés o si el idioma nativo del menor es otro idioma diferente del inglés (identificado en la Encuesta del Idioma del Hogar), los estudiantes tomarán el WIDA Screener para determinar la elegibilidad y colocación en el programa de ESL. Para los estudiantes identificados como Alumnos de Inglés, una evaluación Estatal de proficiencia en el idioma Inglés se proporcionará anualmente. El estado obliga la administración de las evaluaciones sobre el nivel de conocimiento del Idioma de inglés (WIDA Screener y/o WIDA ACCESS para ELLs) para determinar la habilidades de los estudiantes de entender, hablar, leer y escribir. Los resultados determinarán la elegibilidad para el servicio y también el avance del estudiante.

¿Cómo puedo averiguar el nivel de conocimiento de inglés de mi hijo (a)?

El nivel de conocimiento de su hijo (a) está arriba en esta carta. Favor de contactar el maestro de su hijo (a) o maestro de ESL para una explicación completa de los resultados o el avance de tu hijo (a).

¿Cuáles tipos de programas están disponibles?

Clarenceville School District ofrece un programa de desarrollo del idioma inglés con ayuda intensiva para estudiantes con poco o nada de inglés. A medida que el estudiante avanza en inglés, el o ella estará haciendo la transición al programa de educación general.

Los estudiantes también reciben:

- Educación en grupos pequeños que tiene el propósito de desarrollar la fluidez y alfabetización en el idioma inglés.

- Educación con ayuda en computadora que permite el aprendizaje individual, solución de problemas, y aceleración en el idioma y habilidades del estudiante.

- El uso del Idioma de casa del estudiante a medida que sea necesario para ayudarlo a entender y adquirir conceptos nuevos en áreas como matemáticas, ciencia, y estudios sociales.

- Disposición de libros adicionales, juegos y actividades de aprendizaje

- Oportunidades ser incluido en todas las intervenciones del distrito, enriquecimiento y programas avanzados

Su hijo(a) ha sido seleccionado para un programa basado específicamente en sus necesidades de aprendizaje. Favor de hablar con el maestro de su hijo(a) en las conferencias de los padres o pida una reunión si desea información específica del avance de su hijo(a).

¿Cómo pueden salir los estudiantes del programa?

Nuestro programa de ESL permite que los estudiantes avancen continuamente por mientras que ellos desarrollan un mejor conocimiento del idioma inglés. Los estudiantes pueden salir del programa oficialmente en un número de maneras:

Los padres tiene el derecho absoluto para sacar su hijo(a) de los servicios de ESL en cualquier momento. (Los estudiantes todavía serán requeridos tomar la evaluación anual de conocimiento del idioma Inglés hasta que el estudiante puede cumplir los “Criterios de Entrada y Salida” establecidos por el departamento de educación de Michigan.

Cualquier estudiante que tenga calificaciones en el nivel de proficiencia adecuado en el WIDA ACCESS para los estudiantes que estudian inglés (ELLs) y los exámenes del estado y distrito serán recomendados para salir (así determinado por el departamento de educación sobre los Criterios de Entrada y Salida)

Se realizará un monitoreo de progreso al estudiante por cuatro años después de la salida del programa de ESL.

Las calificaciones de las clases y los resultados de los exámenes se usarán para monitorear el avance. Esta información se usará para determinar la necesidad de apoyo adicional para su hijo(a). Si necesita información adicional, favor de contactar el maestro de su hijo(a) o a la escuela.

Es su derecho como padre para retirar a su hijo(a) de los servicios de ESL. Si NO quiere que su hijo(a) reciba los servicios, usted puede retirar a su hijo(a) dando una notificación a la escuela por escrito. Tenga en cuenta que nuestro gobierno federal obliga la evaluación continua de cualquier estudiante, activo o solicitud de los padres de no servicio, quien tiene otro idioma en su casa que no es el inglés, hasta que ese estudiante demuestre el conocimiento y exitosamente cumpla los requerimientos para retirarse de la evaluación anual de WIDA ACCESS para estudiantes que están aprendiendo inglés. (ELL).

Si necesita información adicional, favor de contactar la escuela de su hijo(a).

Sinceramente,



Clarenceville School District

of Oakland and Wayne Counties

20210 Middlebelt Road
Livonia, Michigan 48152-2099
248.919.0400
Fax 248.919.0430
www.clarencevilleschools.org

Paul K. Shepich
Superintendent

David G. Bergeron
Assistant Superintendent
Business/Support Services/Finance

Renee M. Valentine
Assistant Superintendent
Learning Services

Neil A. Thomas
Director
Special Education/Student Services

Date: _____

Dear Parent,

We understand that you would like to decline participation in the Title III program or particular EL services proposed for your child _____ (insert child's name). EL services are specifically designed to help your child obtain English language proficiency as well as acquire grade-level content. However, as stated in our conversation, you have the legal right to opt your child out of the program or particular services.

If you still wish to opt your child out of the Title III program or particular EL services, **please initial next to each item on the checklist below. Doing so will indicate that you fully understand and agree with each statement. After you have initialed next to each of the statements, please sign, date, and return the form to your child's school.** We will keep this document on file stating that you have declined or do not want these indicated EL services for your child.

_____ I am aware of my child's English language assessment score and other information about my child's current academic progress, and understand why he/she was recommended for additional English language instruction.

_____ I am familiar with the Title III program and services the school has available for my child.

_____ I have had the opportunity to discuss the available Title III program and services with the school.

_____ I understand that the school believes its recommendation is the most academically beneficial for my child.

_____ I understand that my child will still be designated an "English Learner" and have his or her English proficiency assessed once per year until he/she no longer meets the definition of an English Learner. All of this information has been presented to me in a language I fully understand.

I, _____ (insert name), with a full understanding of the above information, wish to

_____ decline all of the Title III program and EL services offered to my child.

_____ decline some of the Title III program and/or particular EL services offered to my child.

Page 2

I wish to decline (List program/services)

Parent's Signature

Child's Name

Date



Clarenceville School District

of Oakland and Wayne Counties

20210 Middlebelt Road
Livonia, Michigan 48152-2099
248.919.0400
Fax 248.919.0430
www.clarencevilleschools.org

Paul K. Shepich
Superintendent

David G. Bergeron
Assistant Superintendent
Business/Support Services/Finance

Renee M. Valentine
Assistant Superintendent
Learning Services

Neil A. Thomas
Assistant Superintendent
Student Services

Fecha: _____

Estimado Padres de Familia:

Nosotros entendemos que ustedes quieren desistir en la participación del Programa Título III o los servicios específicos propuestos de Inglés como Segundo Idioma para su hijo (a) _____ (escribir el nombre del menor).

Los servicios de Inglés como Segundo Idioma son específicamente diseñados para ayudar a su hijo a obtener la proficiencia del idioma Inglés y también adquirir un nivel adecuado de calificaciones en sus clases. Sin embargo, así como lo indicamos en nuestra conversación, ustedes tienen el derecho legal para no participar en el programa o no participar en algún servicio específico.

Si todavía desean que su hijo (a) no participe en el Programa de Título III ni a los servicios específicos de Inglés como Segundo Idioma, **favor de escribir sus iniciales al lado de cada declaración de la lista de abajo. Hacerlo va a indicar que entienden completamente y están de acuerdo con cada declaración. Después de poner sus iniciales al lado de cada declaración, favor de firmar, escribir la fecha y entregar este documento a la escuela de su hijo.** Vamos a guardar este documento en los archivos declarando que ustedes han declinado o no quieren estos servicios de Inglés como Segundo Idioma para su hijo (a).

_____ Soy consciente de los resultados de la evaluación del idioma Inglés de mi hijo (a) y además sobre la información en el progreso académico actual de mi hijo (a), y entiendo porque él / ella fue recomendado para clases adicionales del idioma inglés.

_____ Conozco el programa de Título III y los servicios que la escuela tiene disponibles para mi hijo (a).

_____ Yo he tenido la oportunidad para hablar del programa de Título III y sus servicios con la escuela.

_____ Entiendo que la recomendación que hace la escuela es la de mayor beneficio académico para mi hijo (a).

_____ Comprendo que mi hijo (a) todavía va a ser designado como “Alumno de Inglés” y tendrá su evaluación de proficiencia una vez por año hasta que él / ella no requiera la designación de “Alumno de Inglés”. Toda esta información se me ha presentado a mi en un idioma que yo entiendo perfectamente.

Yo, _____ (escriba su nombre) con el completo entendimiento de la información arriba mencionada deseo

_____ declinar todo del programa de Titulo III y los servicios de Inglés como Segundo Idioma que están ofreciendo a mi hijo (a).

_____ declinar algunos servicios del programa de Titulo III y/o servicios específicos de Inglés como Segundo Idioma ofrecidos a mi hijo (a).

Yo deseo declinar (mencione un listado del programa / servicios)

_____	_____	_____
Firma de los Padres	Nombre del hijo (a)	Fecha



Clarenceville School District

of Oakland and Wayne Counties

20210 Middlebelt Road
Livonia, Michigan 48152-2099
248.919.0400

Fax 248.919.0430 www.clarencevilleschools.org

Paul K. Shepich
Superintendent

David G. Bergeron
Assistant Superintendent
Business/Support Services/Finance

Renee M. Valentine
Assistant Superintendent
Learning Services

Neil A. Thomas
Director
Special Education/Student Services

Date: _____

To the Parents of _____:

When you enrolled your child in **Clarenceville School District**, you indicated that your child's native language is a language other than English, and/or that the primary language used in your home is a language other than English.

As a result, because of state and federal law, **Clarenceville School District** was obligated to administer the WIDA Screener. The purpose of administering the WIDA Screener was to assess your child's level of proficiency in English and to determine if your child qualifies for support from the **English as a Second Language Department (ESL)**.

Your child scored **"Exceptional"** on the Listening and Speaking sections of the WIDA Screener. This means that your child's listening and speaking skills are comparable to native speaking peers. Additional data needs to be gathered before classifying your student as an English Learner (EL). Therefore, over the next couple of months, the **ESL** department will collaborate with your child's classroom teacher and monitor benchmark assessments to make that determination. If a determination is made that your child qualifies for ESL support, you will be notified in writing.

If you have any questions or concerns, please contact me, if you have any questions.

Sincerely,



BUILDING FUTURES SINCE 1837

Clarenceville School District

of Oakland and Wayne Counties

20210 Middlebelt Road
Livonia, Michigan 48152-2099
248.919.0400

Fax 248.919.0430 www.clarencevilleschools.org

Paul K. Shepich
Superintendent

David G. Bergeron
Assistant Superintendent
Business/Support Services/Finance

Renee M. Valentine
Assistant Superintendent
Learning Services

Neil A. Thomas
Director
Special Education/Student Services

Fecha: _____

A los Padres de: _____

Cuando registraron a su hijo en la escuela de Clarenceville School District, ustedes indicaron que el idioma nativo de su hijo es un idioma que no es el inglés, y /o que el primer idioma usado en su hogar es un idioma que no es el inglés.

Como resultado, por la ley del Estado y la ley Federal, Clarenceville School District es obligado a proporcionar el examen “WIDA Screener.” El propósito de este examen es para evaluar la competencia y nivel de inglés de su hijo y para determinar si su hijo está calificado para apoyo del departamento de Inglés como un Segundo Idioma (ESL).

Su hijo obtuvo ‘Excepcional’ en las secciones de Escuchar y Hablar del “WIDA Screener”. Esto indica que las habilidades de escuchar y hablar de su hijo son comparables a la de sus compañeros de clase nativos en inglés. sin embargo, requeriremos reunir más datos antes de clasificar a si hijo como un Alumno de Inglés. Así, en los siguientes meses, el departamento de ESL (Inglés como un Segundo Idioma) va a colaborar con el maestro de su hijo y darán seguimiento a las evaluaciones de referencia para hacer esa decisión. Si se determina que su hijo requiere ayuda para el ESL (Inglés como un Segundo Idioma), usted será notificado por escrito.

Si tiene alguna duda o pregunta, favor de contactarme.

Sinceramente,

APPENDIX C DESCRIPTIONS OF ENGLISH LANGUAGE PROFICIENCY LEVELS

To meet the instructional needs of English learners (ELs) in Michigan, six (6) levels of English language proficiency are used to more accurately describe student proficiency in listening, speaking, reading, writing skills. Included in the table below is a general description of the characteristics of ELs at each level of proficiency.

Michigan English Proficiency Levels (WIDA English Language Proficiency Levels)	Description of English Learners (ELs)
<p>Level 1 Entering</p>	<p>Students with limited formal schooling Level 1 may include students whose schooling has been interrupted for a variety of reasons, including war, poverty or patterns of migration, as well as students coming from remote rural settings with little prior opportunity for sequential schooling. These students may exhibit some of the following characteristics: pre- or semi-literacy in their native language; minimal understanding of the function of literacy; performance significantly below grade level; lack of awareness of the organization and culture of school. (TESOL, 1997, p.21) Because these students may need more time to acquire academic background knowledge as they adjust to the school and cultural environment, English language development may also take longer than other EL beginning students at Level 1. Level 1 students may lack sufficient English literacy for meaningful participation in testing even at the most minimal level.</p> <p>Recently arrived student (less than 30 days) These students have not been assessed with the WIDA Screener and/or other tests used for placement.</p> <p>Beginning (Pre-production and early production) Students initially have limited or no understanding of English. They rarely use English for communication. They respond non-verbally to simple commands, statements and questions. As their oral comprehension increases, they begin to imitate the verbalization of others by using single words or simple phrases, and begin to use English spontaneously (WIDA, 2012).</p> <p>At this earliest stage these students start to construct meaning from text with non-print features (e.g., illustrations, graphs, maps, tables). They gradually construct more meaning from the words themselves, but the construction is often incomplete (WIDA, 2012).</p> <p>They are able to generate simple written texts that reflect their knowledge level of syntax. These texts may include a significant amount of non-conventional features, invented spelling, some grammatical inaccuracies, pictorial representations, surface features and rhetorical features of the native language (i.e., ways of structuring text from native language and culture) (TESOL, 1999, p.20).</p>

<p>Level 2 Emerging</p>	<p>Early intermediate (Speech emergent) Students can comprehend short conversations on simple topics. They rely on familiar structures and utterances. They use repetition, gestures, and other non-verbal cues to sustain conversation (WIDA, 2012).</p> <p>When reading, students at this level can understand basic narrative text and authentic materials. They can use contextual and visual cues to derive meaning from texts that contain unfamiliar words, expressions and structures. They can comprehend passages written in basic sentence patterns, but frequently have to guess at the meaning of more complex materials. They begin to make informed guesses about meaning from context. They can begin to identify the main idea and supporting details of passages (WIDA, 2012)..</p> <p>Students can write simple notes, make brief journal entries, and write short reports using basic vocabulary, and common language structures. Frequent errors are characteristic at this level especially when student try to express thoughts that require more complex language structures. (State of Virginia, pp. 4-9)</p>
<p>Level 3 Developing</p>	<p>Intermediate At this level students can understand standard speech delivered in most settings with some repetition and rewording. They can understand the main ideas and relevant details of extended discussions or presentations. They draw on a wide range of language forms, vocabulary, idioms, and structures. They can comprehend many subtle nuances with repetition and/or rephrasing. Students at this level are beginning to detect affective undertones and they understand inferences in spoken language. They can communicate orally in most settings (WIDA, 2012).</p> <p>Students can comprehend the content of many texts independently. They still require support in understanding texts in the academic content areas. They have a high degree of success with factual information in non-technical prose. They can read many literature selections for pleasure. They can separate main ideas from supporting ones. They can use the context of a passage and prior knowledge to increase their comprehension. They can detect the overall tone and intent of the text (WIDA, 2012).</p> <p>Students can write multi-paragraph compositions, journal entries, personal and business letters, and creative passages. They can present their thoughts in an organized manner that is easily understood by the reader. They show good control of English word structure and of the most frequently used grammar structures, but errors are still present. They can express complex ideas and use a wide range of vocabulary, idioms, and structures, including a wide range of verb tenses. (Virginia, pp. 11-14)</p>

<p>Level 4 Expanding</p>	<p>Transitional Intermediate At this level students' language skills are adequate for most day- to-day communication needs. Occasional structural and lexical errors occur. Students may have difficulty using and understanding idioms, figures of speech and words with multiple meanings. They communicate in English in new or unfamiliar settings, but have occasional difficulty with complex structures and abstract academic concepts (WIDA, 2012).</p> <p>Students at this level may read a wide range of texts with considerable fluency and are able to locate and identify the specific facts within the texts. However, they may not understand texts in which the concepts are presented in a de-contextualized manner, the sentence structure is complex, or the vocabulary is abstract. They can read independently, but may have occasional comprehension problems (WIDA, 2012).</p> <p>They produce written text independently for personal and academic purposes. Structures, vocabulary and overall organization approximate the writing of native speakers of English. However, errors may persist in one or more of these domains (listening, speaking, reading, and writing) (TESOL, 1999, p. 21).</p>
<p>Level 5 Bridging</p>	<p>Proficient At this proficient level students demonstrate English proficiency similar to native speakers. They use specialized or technical language of the content areas. Students at this level write using a variety of sentence lengths of varying linguistic complexity in extended oral or written discourse, including stories, essays or reports (WIDA 2012).</p> <p>Students at this level may read a wide range of texts with considerable fluency and are able to locate and identify the specific facts and draw conclusions within the texts. They may understand texts in which the concepts are presented in a de-contextualized manner, the sentence structure is complex, or the vocabulary is abstract. They can read most grade level texts independently (WIDA, 2012).</p> <p>They produce oral and written language approaching comparability to that of English-proficient peers when presented with grade level material (WIDA 2012).</p>
<p>Level 6 Reaching</p>	<p>Monitored (Advanced Proficiency) Students at this advanced level have demonstrated English proficiency as determined by state assessment instruments (WIDA ACCESS for ELLs and are on grade level in assessments such as the MSTEP, Common Assessments, SAT, and DRA). They are expected to be able to participate fully with their peers in grade level content area classes. The academic performance of these students is monitored for two years as required by federal law.</p>

APPENDIX D COMPLAINTS REGARDING SCHOOL PERSONNEL

Clarenceville School District Bylaws & Policies

9130 - PUBLIC COMPLAINTS

Any person or group, having a legitimate interest in the operations of this District shall have the right to present a request, suggestion, or complaint concerning District personnel, the program, or the operations of the District. At the same time, the Board of Education has a duty to protect its staff from unnecessary harassment. It is the intent of this policy to provide the means for judging each public complaint in a fair and impartial manner and to seek a remedy where appropriate.

It is the desire of the Board to rectify any misunderstandings between the public and the District by direct discussions of an informal type among the interested parties. It is only when such informal meetings fail to resolve the differences, shall more formal procedures be employed.

Any requests, suggestions, or complaints reaching the Board, Board members, and the administration shall be referred to the Superintendent for consideration according to the following procedure.

Matters Regarding a Professional Staff Member

A. First Level

If it is a matter specifically directed toward a professional staff member, the matter must be addressed, initially, to the concerned staff member who shall discuss it promptly with the complainant and make every effort to provide a reasoned explanation or take appropriate action within his/her authority and District administrative guidelines.

This level does not apply if the matter involves suspected child abuse, substance abuse, or any other serious allegation which may require investigation or inquiry by school officials prior to approaching the professional staff member.

As appropriate, the staff member shall report the matter and whatever action may have been taken to the building administrator.

B. Second Level

If the matter cannot be satisfactorily resolved at the First Level, it shall be discussed by the complainant with the staff member's supervisor and in compliance with provisions of a collective bargaining agreement, if applicable.

C. Third Level

If a satisfactory solution is not achieved by discussion with the appropriate administrator, a written request for a conference shall be submitted to the Superintendent. This request should include:

1. the specific nature of the complaint and a brief statement of the facts giving rise to it;
2. the respect in which it is alleged that the complainant (or child of the complainant) has been affected adversely;
3. the action which the complainant wishes taken and the reasons why it is felt that such action be taken.

Should the matter be resolved in conference with the Superintendent, the Board shall be advised of the resolution

APPENDIX E DEFINITIONS

ACCESS for ELLs refers to the annual assessment given to all students participating in the Title III/ESL program.

Basic Interpersonal Communication Skills (BICS) refers to a student's social English language skills. Research indicates that a student takes 1-3 years to acquire functional social language skills. (Cummins, 1981)

Bilingual Instruction

Bilingual instruction is defined as instruction in curricular content areas, including instruction in English language skills (listening, speaking, reading, writing, and comprehension), through a combination of a student's native language and English language.

Bilingual Paraprofessional

A bilingual paraprofessional provides support services to the LEP student. Language proficiency must demonstrate in listening, speaking, reading, writing, and comprehension both the English language and the native language for which they provide support services.

Bilingual Program

Bilingual programs use a student's native language, in addition to English, for instruction by bilingual staff.

Bilingual Teacher

A Bilingual teacher is required to be certified in the area of instruction and in addition have a bilingual endorsement. This teacher may provide bilingual or ESL instruction or support services to the ELs. Frequently, this teacher will provide consultative services to the regular classroom teacher.

Building Instructional Team

The following staff should be part of the team working with ESL students:

- Classroom Teacher
- Counselor
- Social Worker
- Psychologist
- ESL Instructor/Paraprofessional
- General Education Resource Teacher
- Principal

The ESL teacher and ESL paraprofessionals assigned to the building will provide instructional support and materials.

When concerns arise regarding a student's program, curriculum or placement, the team outlined above will address these issues at a Building Instructional Team meeting. The Building Instructional Team referrals may be requested by any staff member. The District ESL supervisor will be notified when a particular ELs problem persists after interventions have been implemented as recommended by the Building Instructional Team.

CA-60 File

This file is kept in the school office and is the official record of the student. It contains: birth certificate, immunization records, registration documents, standardized test scores, report cards, and other official school documents.

CALP

Cognitive Academic Language Proficiency (CALP) refers to the English language skills necessary to function successfully in an academic/school environment. Research indicates that it takes a student from 3-7 or more years to acquire such academic language skills. (Cummins, 1981)

Content-based Language Development Programs

Content-based Language Development programs group ELs from different languages together in classes where teachers use English as the medium for providing content area instruction. Teachers modify classroom language to the proficiency level of the students.

Co-Teaching

Co-teaching is defined as having an ESL/Bilingual teacher assist in the instruction for content area classes whenever there is a significant population of ELs in the building.

ELs (English Learners)

ELs refers to students whose first language is not English, and encompasses both students who are just beginning to learn English (often referred to as limited English proficient or LEP) and those who have already developed considerable proficiency. The term underscores the fact that, in addition to meeting all the academic challenges that face their monolingual peers, these students are learning English.

ESL/ELD

English as a Second Language (ESL)/English Language Development (ELD) instruction is used to teach English language components (grammar, vocabulary, and pronunciation) and language skills (listening, speaking, reading, writing, and comprehension) as well as content areas.

ESL Programs

ESL programs emphasize learning English for both social and academic purposes. English is the language of instruction.

ESL Class Period

A student receives ESL instruction during a regular class period, often grouped by English language proficiency levels.

ESL Instruction

ESL is defined as a structured language acquisition program designed to instruct a student in the English language (speaking, reading, writing, and comprehending) and core academic content.

ESL Newcomer's Center

ESL Newcomer's Center is an ESL classroom that enrolls non-English-speaking students from many or all schools of the same grade level (elementary, middle or high school). The Center provides intensive English language and academic content instruction.

ESL Resource Center

Students from several classrooms come together for English language and academic content instruction. The resource center concentrates ESL materials and staff in one location.

ESL Student File

This file is kept by the Bilingual/ESL teacher at the building of enrollment. It contains a copy of the district registration, assessment data, and family information.

ESL Teacher

An ESL teacher is required to be certified and have specific training in ESL instruction. The ESL teacher may provide ESL instruction or support services to LEP students and may provide consultative services to regular classroom teachers.

ESSA

The Every Student Succeeds Act (ESSA) is the most recent reauthorization of the Elementary and Secondary Education Act (ESEA).

FEL Students

A Former English Learner (FEL) has been exited from Title III/ESL program because:
The student has scored proficient on the ACCESS, W-APT, and multiple district assessments.

Inclusion

An EL is placed in general education and may receive tutorial support or receive service through a team approach.

Language Instruction Educational Program (LIEP)

Under Title VI and the EEOA LEAs must provide a language assistance program that is effective—educationally sound and proven successful. Consistent with ESEA section 3124, the Department does not recommend any particular curricula, program of instruction, or instructional materials, nor does it prohibit any language instruction educational program used with ELs that is consistent with Title III of the ESEA and other laws, including Title VI and the EEOA.

Title III

Title III is an entitlement program under the Elementary and Secondary Education Act. The purpose of Title III, Part A, is to help ensure that children and youth who are limited English proficient, Native American and/or immigrants, attain English language proficiency, develop high levels of academic attainment in English, and meet the same challenging academic standards that all children are expected to meet. Title III funds are directed to states and eligible local districts or consortia through a formula grant allocation to:

- Develop high-quality language instruction educational programs
- Assist SEAs, LEAs and schools to build their capacity to establish, implement, and sustain language instruction and development programs
- Promote parental and community involvement
- Hold SEAs, LEAs, and schools accountable for increases in English proficiency and core academic content knowledge of limited English proficient children by:

- Demonstrated improvement in the English proficiency of limited English proficient children each fiscal year; and
- Adequate yearly progress for limited English proficient children, including immigrant children and youth, as described in section 1111(b)(2).

Woodcock-Muñoz

Woodcock-Muñoz is an assessment used to determine English language proficiency.

WIDA Screener refers to the English language screening assessment given to students new to Bloomfield Hills Schools, when indicated on the home language survey, that a language other than English is spoken in the home.

WIDA refers to a consortium of states with the purposes of advancing academic language development and academic achievement for linguistically diverse students through high quality standards, assessments, research, and professional development for educators.

APPENDIX F GUIDELINES

- Most students should be placed in an age-appropriate classroom. Even if the student has not attended school before, the social nature of schooling cannot be ignored. It is important to place students with their peers and allow them to interact naturally. Exceptions may include students who have not attended school for more than a year.
- A student should be placed in classrooms that utilize the most interactive methods of teaching. English Learners (ELs) need to listen, speak, read, and write in meaningful contexts to acquire English. Teachers who rely mainly on lecture, memorization, and worksheets may be least appropriate for second language learners.
- Bilingual para-educators or instructional assistants may work directly with a student in the classroom in conjunction with the classroom teacher. In this way, para-educators or instructional assistants have a better understanding of what, why, and how content material is being studied and can provide support that is directly connected to classroom goals.
- Previous schooling is considered. The academic backgrounds of students vary greatly. Some students may have studied advanced algebra while others may never have attended school.
- All students need time to learn how to interact in an American school setting. Consideration is given to having the ESL/Bilingual staff explicitly teach about the culture and language of schools.
- Initial placement decisions for the middle and high school student should take into account native language literacy skills, previous schooling, interests and goals, and opportunities within classes for hands-on interactive learning. While a student is often placed in physical education, art, and music classes, when taught appropriately with the support of ESL teachers or tutors, other content area classes such as science and math may be crucial to maintaining student's interest in school.
- Consideration is given to alternative means of assessment for the English Learner. Portfolio assessments that include a broad range of student work, teacher observations, and even audio and videotapes of the student's work will offer a vision of student's progress over time. The placement team recognizes that every test is a language test; the student may understand content but be unable to decipher a multiple-choice test. Finally, the team assists teachers in inventing ways of allowing the student to demonstrate what they have learned without using complex English.

The placement team encourage the English Learner's involvement in extra-curricular activities at all grade levels. A student learns English and feels connected to school when he/she is playing soccer, acting in the school play, preparing something for a bake sale, or singing in the choir. The English Learner needs to be invited to participate.

Additional standardized and curriculum-based assessments inform the decision of the team. Criteria used to exit a student will be placed in the student's CA 60 and ESL file.

APPENDIX G TITLE III FUNDS

Allowable Uses of Title III Funds

Title III English Language Acquisition: Generally Allowable Expenditures

Title III funds are supplemental and are to be used over and above the district's required services and resources provided to ELs and their families. **Required** activities include:

1. High quality language instruction educational programs that demonstrate effectiveness by increasing English proficiency and student academic achievement in the core academic subjects.
2. High quality professional development of sufficient intensity and duration that demonstrates effectiveness in improving instruction and assessment and which enhances the ability of teachers to understand and use curricula, assessment measures, and instructional strategies.
3. High quality activities that include parent, family, and community engagement and coordination, and coordination and alignment of related programs (ESEA Section 3115(c)(3)).

Title III supplemental EL funds can be used, in priority order, for the following:

1. Services before and after school such as tutoring, academic assistance, supplementary instructional materials for English language acquisition as well as for summer school programs for ELs. Districts need to identify the students served and the method used to assess and monitor their progress.
2. Professional development that is planned based on students achievement data and provided in a systemic and sustained manner to improve instruction and assessment of ELs. Staff training could include bilingual/ESL classroom teachers, bilingual/ESL teacher coaches, paraprofessionals, regular education teachers, administrators, and other school based or community-based organizational personnel who serve ELs.
3. Hiring bilingual/ESL coaches whose role is to acquire scientific-based research practices, provide professional development, mentor and coach teachers who are working directly with ELs. Additionally, such funds can be used to provide stipends to teachers to assist them in completing and obtaining bilingual/ESL endorsements.
4. Parent involvement activities including family literacy (ESL) and parenting classes. Additionally, funds can be used for speakers who conduct informative parent sessions that enhance student language acquisition and mastery of core academic subjects. Districts may purchase supplemental instructional materials to support child's English language learning at home, materials and books on parenting skills. A Parent Involvement Liaison can be hired or contracted to enhance ongoing parent engagement in school activities, committees and functions, facilitate planning and conducting parent meetings, connecting families to community resources, and interpreting to parents during Title III meetings.
5. Cost for educational field trips if part of high quality language instruction educational programs/activities (buses and admission).
6. Administrative and indirect costs of III/Immigrant may NOT exceed 2% of the total allocation (ESEA Section 3115(b)).

Title III Non-Allowable Expenditures:

1. Title III funds may NOT be used to pick up a cost that was previously funded by general funds.
2. Title III may NOT supplant any other federal, state or local expenses.
3. All test administration cost (ACCESS for ELLs, W-APT, other state assessments) must be paid by general fund, including the pay for proctors, assessors and substitute teachers.
4. Translation of documents, parent handbooks, and assessments are funded by general funds and NOT with Title III funds.
5. Title III funds may NOT be used for Intake/Eligibility or Annual progress assessments.

Immigrant Program: Generally Allowable Expenditures:

Sub-grants to LEAs and ISDs are made if significant increase is experienced in numbers of immigrant students from ages 3-21; enrolled in public or private school; not born in US; not attended US school for more than three full years. Purpose of Immigrant sub-grants is to pay for activities that provide enhanced instructional opportunities for immigrant children and youth (ESEA Section 3115 (C)). Allowable activities include:

1. Support for personnel, including paraprofessionals who have been specifically trained, or are being trained, to provide services to immigrant children and youth.
2. Provision of tutorials, mentoring, and academic or career counseling for immigrant children and youth (career exploration and shadowing experiences, college visits, etc.) throughout the day and before/after school.
3. Identification and acquisition of bilingual curricular materials, bilingual educational software and technologies to be used in the program carried out with these funds.
4. Activities, coordinated with community-based organizations, institutions of higher education, private sector entities, or other entities with expertise in working with immigrants, to assist parents of immigrant children and youth by offering comprehensive community services.
5. Family literacy, parent outreach liaison and activities, training activities designed to assist parents in adjusting to and understanding the American culture and school system in order to become active participants in the education of their children.
6. Administrative and indirect cost to Title III Immigrant may NOT exceed 2% of the total allocation.

Title III Immigrant Non-Allowable Expenditures:

1. Title III Immigrant funds may NOT be used to pick up a cost that was previously funded by general funds.
2. Title III Immigrant funds may NOT supplant any other federal, state or local expenses.
3. All test administration cost (ACCESS for ELLs, W-APT, other state assessments) must be paid by general fund, including the pay for proctors, assessors and substitute teachers.
4. Title III Immigrant funds may NOT be used for Intake/Eligibility or Annual progress assessments.
5. Translation of documents, parent handbooks, and assessments are funded by general funds and NOT with Title III immigrant funds.

APPENDIX H LANGUAGE INSTRUCTION EDUCATIONAL PROGRAM

Proficiency Levels	Level of Service/Number of Hours Daily	Mode of Delivery	Staff Providing Service
<u>Entering Level 1</u> <i>WIDA ACCESS for ELLs Score 0 – 1.9</i>	<u>40 minutes to 63 min-2 to 5 days a week:</u> K-5: 40 – 60 min 2-3 days per week 6-8: 53 mins 5 days per week 9-12: 63 min M,W,F and 50 min on Tu, Thu (Service also based on individual need)	<p>Individual, small group, or self-contained ESL classroom with content and language development instruction delivered by ESL/SIOP/WIDA certified/trained teacher.</p> <p>Additional push-in and pull-out support provided by highly qualified (HQ) paraprofessional and teaching staff for language, vocabulary, reading development, and math support.</p> <p>Collaborative consultation and/or teaching in classrooms between and ESL HQ staff and classroom teachers to provide English language development and content area support.</p> <p>Resources provided to classroom teachers by ESL/SIOP/WIDA trained teacher.</p> <p>Intervention support (AARI or LLI) provided by trained interventionist or general education teacher.</p> <p>Providing teacher support and consultation.</p>	<p>Certified ESL/SIOP/WIDA endorsed/trained teacher</p> <p>SIOP trained HQ gen ed staff</p> <p>Support from HQ paraprofessionals, who are supervised by and consult with classroom and/or ESL endorsed teachers</p>

<p><u>Emerging Level 2</u></p> <p><i>WIDA ACCESS for ELLs Score 2 – 2.9</i></p>	<p><u>40 minutes to 63 min-2 to 5 days a week:</u></p> <p>K-5: 40 – 60 min 2-3 days per week</p> <p>6-8: 53 mins 5 days per week</p> <p>9-12: 63 min M,W,F and 50 min on Tu, Thu</p> <p>(Service also based on individual need)</p>	<p>Individual, small group, or self-contained ESL classroom with content and language development instruction delivered by ESL/SIOP/WIDA certified/trained teacher.</p> <p>Additional push-in and pull-out support provided by highly qualified (HQ) paraprofessional and teaching staff for language, vocabulary, reading development, and math support.</p> <p>Collaborative consultation and/or teaching in classrooms between and ESL HQ staff and classroom teachers to provide English language development and content area support.</p> <p>Resources provided to classroom teachers by ESL/SIOP/WIDA trained teacher.</p> <p>Intervention support (AARI or LLI) provided by trained interventionist or general education teacher.</p> <p>Providing teacher support and consultation.</p>	<p>Certified ESL/SIOP/WIDA endorsed/trained teacher</p> <p>SIOP trained HQ gen ed staff</p> <p>Support from HQ paraprofessionals, who are supervised by and consult with classroom and/or ESL endorsed teachers</p>
<p><u>Developing Level 3</u></p> <p><i>WIDA ACCESS for ELLs Score 3 – 3.9</i></p>			

<p><u>Expanding Level 4</u></p> <p><i>WIDA ACCESS for ELLs Score 4 – 4.9</i></p>	<p><u>40 minutes to 63 min-2 to 5 days a week:</u></p> <p>K-5: 40 – 60 min 2-3 days per week</p> <p>6-8: 53 mins 5 days per week</p> <p>9-12: 63 min M,W,F and 50 min on Tu, Thu</p> <p><u>OR</u></p> <p><u>Services based on individual needs and/or monitored by ESL Staff</u></p>	<p>Individual, small group, or self-contained ESL classroom with content and language development instruction delivered by ESL/SIOP/WIDA certified/trained teacher.</p> <p>Additional push-in and pull-out support provided by highly qualified (HQ) paraprofessional and teaching staff for language, vocabulary, reading development, and math support.</p> <p>Collaborative consultation and/or teaching in classrooms between and ESL HQ staff and classroom teachers to provide English language development and content area support.</p> <p>Resources provided to classroom teachers by ESL/SIOP/WIDA trained teacher.</p> <p>Intervention support (AARI or LLI) provided by trained interventionist or general education teacher.</p> <p>Monitoring/providing teacher support and consultation.</p>	<p>Certified ESL/SIOP/WIDA endorsed/trained teacher</p> <p>SIOP trained HQ gen ed staff</p> <p>Support from HQ paraprofessionals, who are supervised by and consult with classroom and/or ESL endorsed teachers</p>
<p><u>Bridging Level 5</u></p> <p><i>WIDA ACCESS for ELLs Score 5 – 5.9</i></p>	<p><u>Services based on individual needs and/or monitored by ESL Staff</u></p>	<p>Mostly served by SIOP trained teachers. ESL support as needed for teachers (coaching, EL strategies) and student (1 on 1, small group, content specific) to meet specific language needs as identified through data reflection.</p> <p>Appropriate instructional modifications in place.</p> <p>Intervention support (AARI or LLI) provided by trained interventionist or general education teacher.</p> <p>Monitoring/providing teacher support and consultation.</p>	<p>Certified ESL/SIOP/WIDA endorsed/trained teacher</p> <p>SIOP trained HQ gen ed staff</p> <p>Support from HQ paraprofessionals, who are supervised by and consult with classroom and/or ESL endorsed teachers</p>

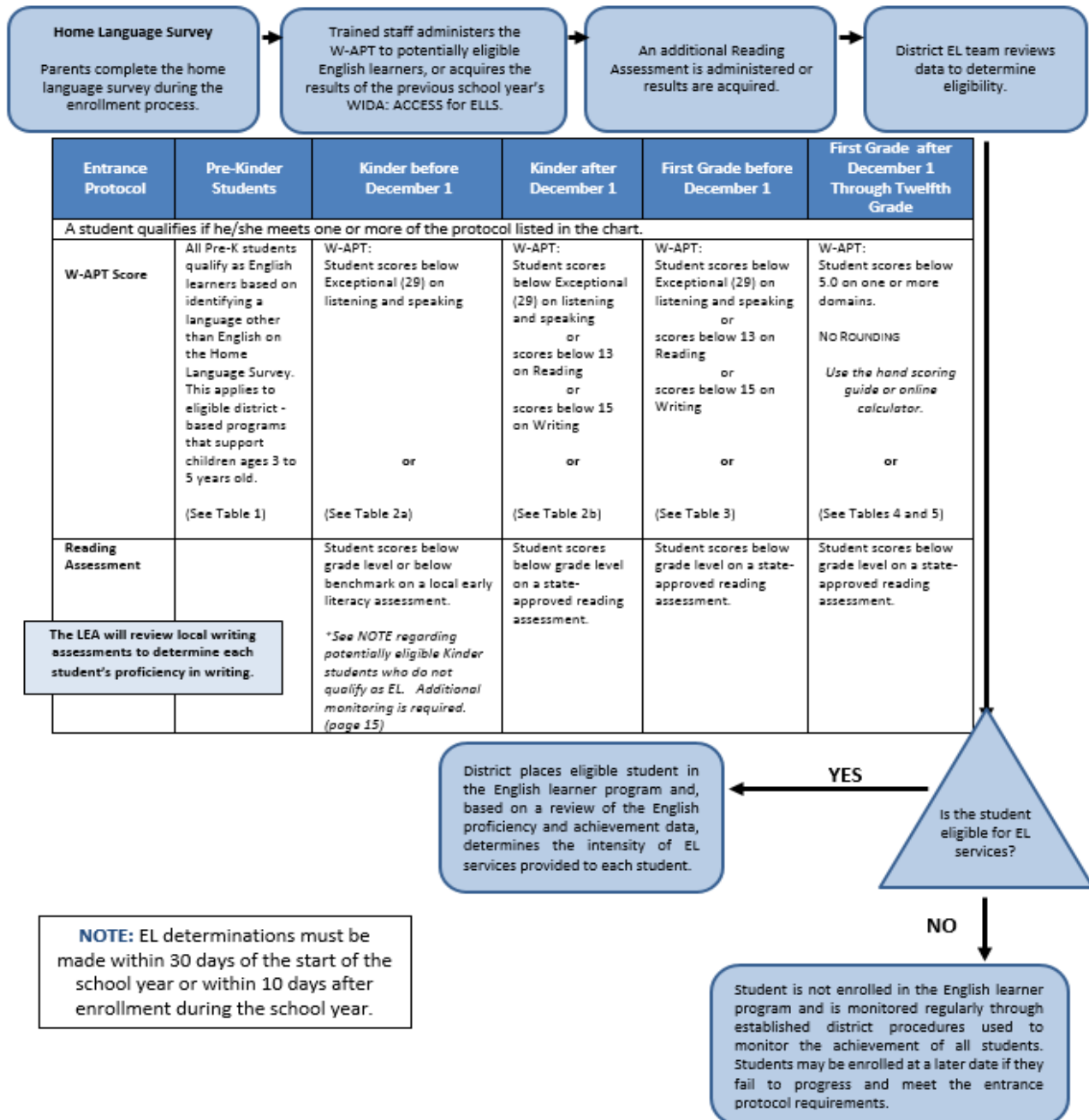
<p><u>Reaching</u> <u>Level 6</u> <i>WIDA</i> <i>ACCESS for</i> <i>ELLs Score</i> 6</p>	<p><u>Services based on</u> <u>individual needs</u> <u>and/or monitored by</u> <u>ESL Staff</u></p>	<p>Mostly served by SIOP trained teachers. ESL support as needed for teachers (coaching, EL strategies) and student (1 on 1, small group, content specific) to meet specific language needs as identified through data reflection.</p> <p>Appropriate instructional modifications in place.</p> <p>Intervention support (AARI or LLI) provided by trained interventionist or general education teacher.</p> <p>Monitoring/providing teacher support and consultation.</p>	<p>Certified ESL/SIOP/WIDA endorsed/trained teacher</p> <p>SIOP trained HQ gen ed staff</p> <p>Support from HQ paraprofessionals, who are supervised by and consult with classroom and/or ESL endorsed teachers</p>
--	--	---	---

APPENDIX I NOTICE OF NON-DISCRIMINATION

Nondiscrimination Policy for The Clarenceville School District prohibits unlawful discrimination on the basis of race, color, religion, sex, national origin, age, height, weight, marital status, handicap, or disability in any of its educational programs or activities. The following person has been designated to handle inquiries regarding the nondiscrimination policies: Dave Bergeron, Assistant Superintendent of Business, 20210 Middlebelt Rd., Livonia, MI 48152 at 248-919-0250.

APPENDIX J PROGRAM ENTRY AND EXIT SUMMARY CHART

Entrance Protocol for Potentially Eligible English Learners



K-12 Students – ESL Entrance Protocol for Potentially Eligible English Learners

New students entering kindergarten through twelfth grade, including students who were previously enrolled in other states, are tested using the W-APT or WIDA Screener. If the student was enrolled in another Michigan district, results from the spring WIDA ACCESS for ELLs from the previous year's cycle are reviewed. Potentially eligible EL students who score below the levels indicated in Tables 2a, 2b, 3, 4, and 5 on the WIDA Screener are eligible for the EL program. Potentially eligible EL students who score below grade level on the state-approved, local reading assessment are eligible for the EL program. In addition, the district will review local writing assessments to determine proficiency and guide instruction.

Students are not found eligible as English learners **if** they exceed the W-APT or WIDA levels **and** meet or exceed grade level on the state-approved reading assessments found in Tables 2a, 2b, 3, 4 and 5. A student who is not found eligible as an English learner is monitored regularly through established district procedures used to monitor the achievement of all students. Students may be identified as an English learner at a later date if they fail to progress and fall below the entrance protocol requirements.

TABLE 1	
Grade Level	Home Language Survey
Pre - K	All Pre-K students qualify as EL based on identifying a language other than English on the Home Language Survey.

TABLE 2A REQUIRED ENTRANCE PROTOCOL: KINDERGARTEN (BEFORE DEC. 1ST)		
Grade Level	W-APT	Reading
Student scores below grade level as defined by the assessment		
Kinder (before Dec 1st)	<i>Student scores below Exceptional (29) in Listening and Speaking</i> <i>*Kindergarten W-APT is reported in rawscores</i> <i>*See NOTE regarding potentially eligible Kinder students who do not qualify as EL. Additional monitoring is required.</i>	Early literacy assessment -AIMSweb – both CBM and MAZE subtests -DIBELS Next -Discovery Education Assessments -DRA2: Developmental Reading Assessment version 2 -Fountas & Pinnell -iReady Diagnostic -MLPP: Michigan Literacy Progress Profile -NWEA: Northwest Evaluation Association -Star Early Literacy The LEA will review local writing assessments to determine each student's proficiency in writing.

TABLE 2B REQUIRED ENTRANCE PROTOCOL: KINDERGARTEN (After DEC. 1ST)		
Grade Level	W-APT	Reading
Student scores below grade level as defined by the assessment		
Kinder (after Dec 1st)	<p><i>Student scores below Exceptional (29) in Listening and Speaking</i></p> <p><i>or</i></p> <p><i>below 13 in Reading</i></p> <p><i>or</i></p> <p><i>below 15 in Writing</i></p> <p><i>*Kindergarten W-APT is reported in rawscores</i></p>	<p>AIMSWeb – both CBM and MAZE subtests</p> <p>-DIBELS Next</p> <p>-Discovery Education Assessments</p> <p>-DRA2: Developmental Reading Assessment version 2</p> <p>-Fountas & Pinnell</p> <p>-iReady Diagnostic</p> <p>-MLPP: Michigan Literacy Progress Profile</p> <p>-NWEA: Northwest Evaluation Association</p> <p>-Star Early Literacy</p> <p>The LEA will review local writing assessments to determine each student's proficiency in writing.</p>

TABLE 3 REQUIRED ENTRANCE PROTOCOL: FIRST GRADE (BEFORE DECEMBER 1ST)		
Grade Level	W-APT	Reading
Student scores below grade level as defined by the assessment		
First Grade (before Dec 1st)	<p><i>Student scores below Exceptional (29) in Listening and Speaking</i></p> <p><i>or</i></p> <p><i>below 13 in Reading</i></p> <p><i>or</i></p> <p><i>below 15 in Writing</i></p> <p><i>*First Grade (before December 1) W-APT is reported in raw scores</i></p>	<p>AIMSWeb – both CBM and MAZE subtests</p> <p>-DIBELS Next</p> <p>-Discovery Education Assessments</p> <p>-DRA2: Developmental Reading Assessment version 2</p> <p>-Fountas & Pinnell</p> <p>-iReady Diagnostic</p> <p>-MLPP: Michigan Literacy Progress Profile</p> <p>-NWEA: Northwest Evaluation Association</p> <p>-Star Early Literacy</p> <p>The LEA will review local writing assessments to determine each student's proficiency in writing.</p>

TABLE 4 REQUIRED ENTRANCE PROTOCOL: FIRST GRADE (AFTER DECEMBER 1ST) AND SECOND GRADE		
Grade Level	WIDA SCREENER	Reading
Student scores below grade level as defined by the assessment		
First Grade (after Dec 1st) And Second Grade	<p><i>WIDA Screener:</i></p> <p><i>Student scores below 5.0 on one or more domains (listening, speaking, reading, or writing).</i></p> <p>NO ROUNDING</p> <p><i>Use the hand scoring guide or online calculator.</i></p> <p><i>If available, the previous year's WIDA domain specific information from another district or state may be used in place of the W-APT. All protocol requirements apply</i></p>	<p>AIMSWeb – both CBM and MAZE subtests</p> <p>-DIBELS Next</p> <p>-Discovery Education Assessments</p> <p>-DRA2: Developmental Reading Assessment version 2</p> <p>-Fountas & Pinnell</p> <p>-iReady Diagnostic</p> <p>-MLPP: Michigan Literacy Progress Profile</p> <p>-NWEA: Northwest Evaluation Association</p> <p>-Star Early Literacy</p> <p>The LEA will review local writing assessments to determine each student's proficiency in writing.</p>

Third through Twelfth Grade

Students are eligible for EL services if **one** of the following protocol requirements is met for entrance into the program: if a student scores below 5.0 (no rounding) on one or more domains (listening, speaking, reading and writing) **or** if they are below grade level in reading or writing. If the third through twelfth grade student has met or exceeded 5.0 on all four domains on the WIDA SCREENER, the school will proceed to administer one of the state-approved reading assessments listed in Tables 5 and 6 to determine if the student is at or above grade level in reading. Students scoring below proficiency on one of the state-approved reading assessments qualify for EL services. The LEA will review local writing assessments to determine each student's proficiency in writing and guide instruction.

A student does not qualify for EL services if **all** of the following are true: the student scores at or above 5.0 in listening, at or above 5.0 in speaking, at or above 5.0 in reading, at or above 5.0 in writing, **and** scores at or above grade level on the state-approved reading assessment.

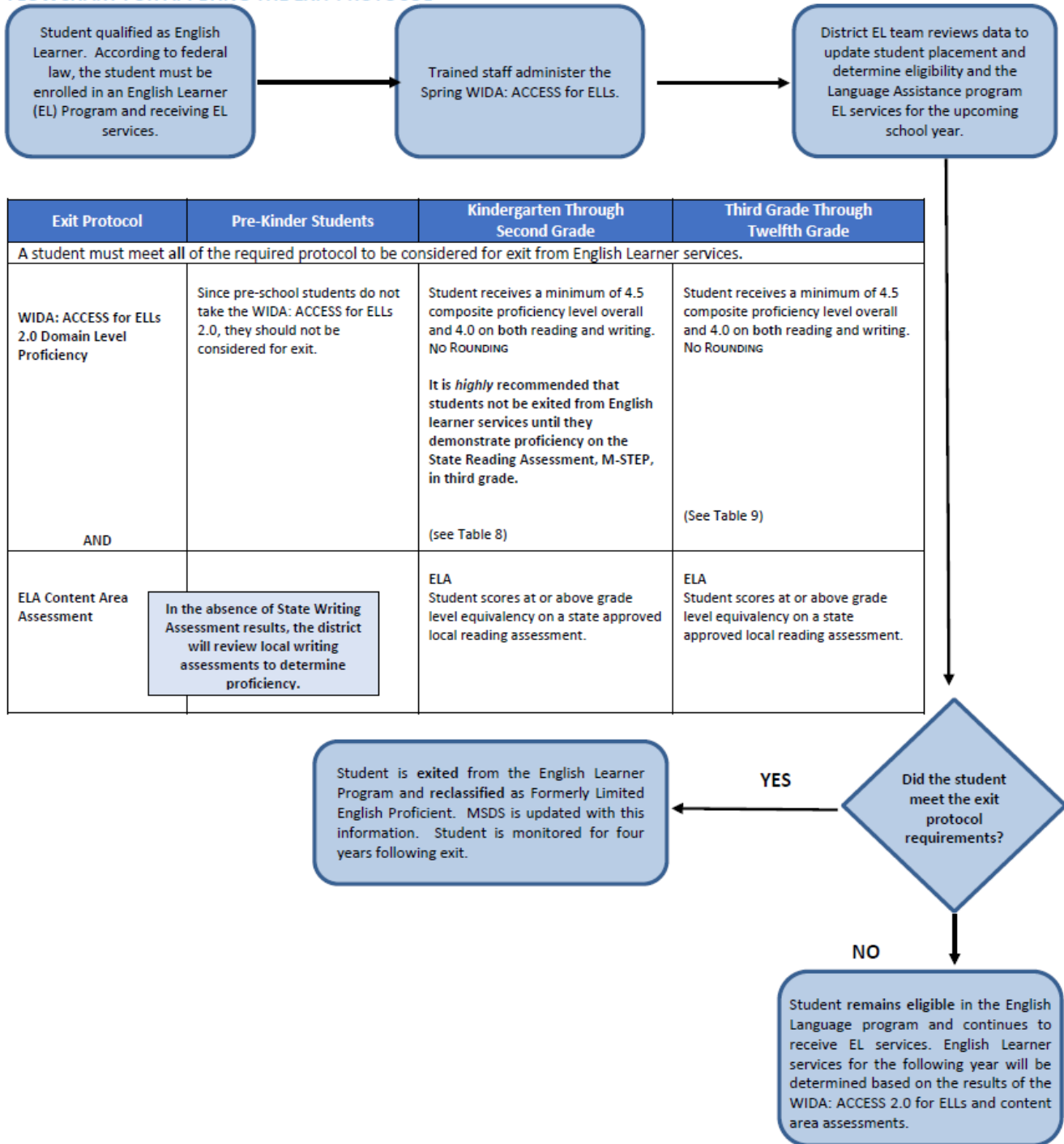
TABLE 5 REQUIRED ENTRANCE PROTOCOL: THIRD - TWELTH		
Grade Level	WIDA SCREENER	Reading
Student scores below grade level as defined by the assessment		
THIRD FOURTH FIFTH	<p>WIDA SCREENER: <i>Student scores below 5.0 on one or more domains (listening, speaking, reading, or writing).</i> NO ROUNDING</p> <p><i>Use the hand scoring guide or online calculator.</i></p> <p><i>If available, the previous year's WIDA domain specific information from another district or state may be used in place of the W-APT. All protocol requirements apply</i></p>	<p>AIMSWeb – both CBM and MAZE subtests -DIBELS Next -Discovery Education Assessments -DRA Developmental Reading Assessment version 2 -Fountas & Pinnell -iReady Diagnostic -NWEA: Northwest Evaluation Association -QRI-5: Qualitative Reading Inventory -Star Reading</p> <p>The LEA will review local writing assessments to determine each student's proficiency in writing.</p>
SIXTH SEVENTH EIGHTH NINTH TENTH ELEVENTH TWELFTH		<p>AIMSWeb – both CBM and MAZE subtests (6th – 8th) -DISCOVERY Education Assessments -DRA Developmental Reading Assessment version 2(6th – 8th) -Fountas & Pinnell (6th – 8th) -iReady Diagnostic -NWEA: Northwest Evaluation Association -PSAT or SAT -QRI-5: Qualitative Reading Inventory -Scantron Performance Series -SRI: Scholastic Reading Inventory -Star Reading</p> <p>The LEA will review local writing assessments to determine each student's proficiency in writing.</p>

TABLE 6 ENTRANCE PROTOCOL: ALTERNATIVE STATE-APPROVED READING ASSESSMENTS AND SOURCES OF ADDITIONAL DIAGNOSTIC DATA

GRADE LEVEL	STATE-APPROVED READING ASSESSMENTS
K-2	AIMSWeb – both CBM and MAZE subtests DIBELS Next Discovery Education Assessments DRA: Developmental Reading Assessment version 2 Fountas & Pinnell iReady Diagnostic MLPP: Michigan Literacy Progress Profile NWEA: Northwest Evaluation Association Star Early Literacy
3-5	AIMSWeb – both CBM and MAZE subtests DIBELS Next Discovery Education Assessments DRA Developmental Reading Assessment version 2 Fountas & Pinnell iReady Diagnostic NWEA: Northwest Evaluation Association QRI-5: Qualitative Reading Inventory Star Reading
6-12	AIMSWeb – both CBM and MAZE subtests (6th – 8th) Discovery Education Assessments DRA Developmental Reading Assessment version 2 (6th – 8th) Fountas & Pinnell (6th – 8th) iReady Diagnostic NWEA: Northwest Evaluation Association PSAT or SAT QRI-5: Qualitative Reading Inventory Scantron Performance Series SRI: Scholastic Reading Inventory Star Reading

Exit Protocol for Potentially Eligible English Learners

FLOWCHART FOR APPLYING THE EXIT PROTOCOL



Exit Protocol: State-Approved Assessments or Additional Sources of Diagnostic Data

A student may be exited from the ESL language/Title III program services if he/she obtains a score of **4.0 or higher** in the reading and writing domains and **a 4.5 composite proficiency level score** on the spring WIDA ACCESS for ELLs 2.0 and performs at or above grade level equivalency on one of the state-approved reading assessments listed on TABLE 7. The LEA will review local writing assessments.

TABLE 7 EXIT PROTOCOL: ALTERNATIVE STATE-APPROVED READING ASSESSMENTS	
GRADE LEVEL	STATE-APPROVED READING ASSESSMENTS
K-2	AIMSWeb – both CBM and MAZE subtests DIBELS Next Discovery Education Assessments DRA: Developmental Reading Assessment version 2 Fountas & Pinnell iReady Diagnostic MLPP: Michigan Literacy Progress Profile NWEA: Northwest Evaluation Association Star Early Literacy Gates McGinitie ITBS: Iowa Test of Basic Skills Terra Nova
3-5	AIMSWeb – both CBM and MAZE subtests DIBELS Next Discovery Education Assessments DRA Developmental Reading Assessment version 2 Fountas & Pinnell iReady Diagnostic NWEA: Northwest Evaluation Association QRI-5: Qualitative Reading Inventory Star Reading Gates McGinitie ITBS: Iowa Test of Basic Skills Terra Nova
6-12	AIMSWeb – both CBM and MAZE subtests (6th – 8th) Discovery Education Assessments DRA Developmental Reading Assessment version 2 (6th – 8th) Fountas & Pinnell (6th – 8th) iReady Diagnostic NWEA: Northwest Evaluation Association PSAT or SAT QRI-5: Qualitative Reading Inventory Scantron Performance Series SRI: Scholastic Reading Inventory Star Reading Gates McGinitie ITBS: Iowa Test of Basic Skills Terra Nova