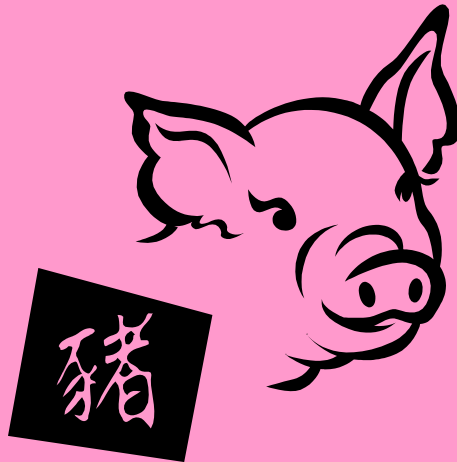


Charlotte's Web



Developed by Kimberly Chastain



Overview

The purpose of this WebQuest is to further students knowledge about a wonderful book that provides students with concepts in relation to the following:

Read and discuss *Charlotte's Web* (LITERATURE)

Complete mathematical problems in addition, subtraction, multiplication, and division (MATH)

Use creativity in preparing an art project involving the fictional characters in the story (ART)

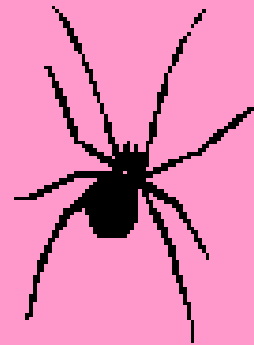
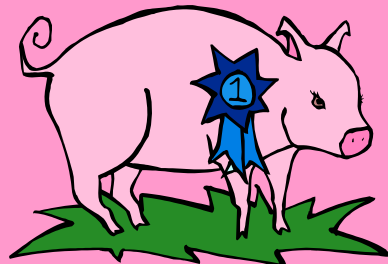
Learn about the scientific aspects of spiders and create a list of 10 important facts (SCIENCE)

Explore rural life vs. urban life (SOCIAL STUDIES)

Resources needed for the WebQuest are computers with internet access. Students must also be provided with the book *Charlotte's Web*.

Introduction

Welcome to the world of Wilbur and Charlotte! During this quest you will be lead to different activities designed to accompany E.B. White's *Charlotte's Web*. These activities will include the story's characters, events, and vocabulary.



Task

Now that you have read *Charlotte's Web* you can complete the assignments below. You will be graded on the activities based on the rubric available in the evaluation section of this webquest.

Participate in activities about the book. Do crosswords puzzles, take quizzes, and create a diorama.

Learn about spiders and spider webs! Charlotte was an important character in the story. You can learn more about her by reading about all kinds of spiders.

Process

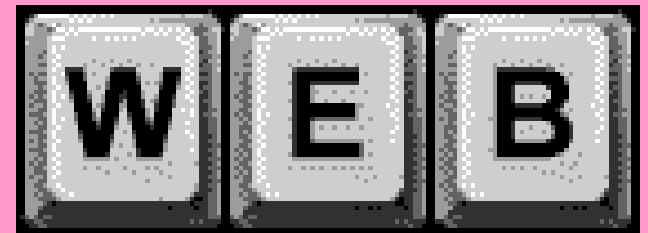
Grades will be determined by the rubrics available at the end of the WebQuest. You may now begin the first step and go through your lessons covered in this colorful story.



1. You are ready to begin!

How carefully did you read the book? To find out you will be completing a crossword puzzle about some of the events in the story. Click below to go to the crossword puzzle and print it out. Then you can complete the puzzle at your desk.

[Charlotte's Web Crossword Puzzle](#)



2. Participate in activities about Charlotte's Web created by students on the provided web site. Each group member needs to print out each activity and complete them at your desk. Then tell what you liked or disliked about it on the back of each sheet.

Mystery Quotes

Farm vs. City

Charlotte's Web Question Puzzle

A Web of Problems

Message From Templeton

3. Check out all of the websites below and create a list of 8 exciting and scientific facts about spiders. You must create a spider as your graphic organizer. List the facts on the spider's legs. Decorate your paper with a picture of some kind. Be **CREATIVE!** Have fun looking at these sites!

<http://www2.lhric.org/pocantico/spiders/spiders2.htm>

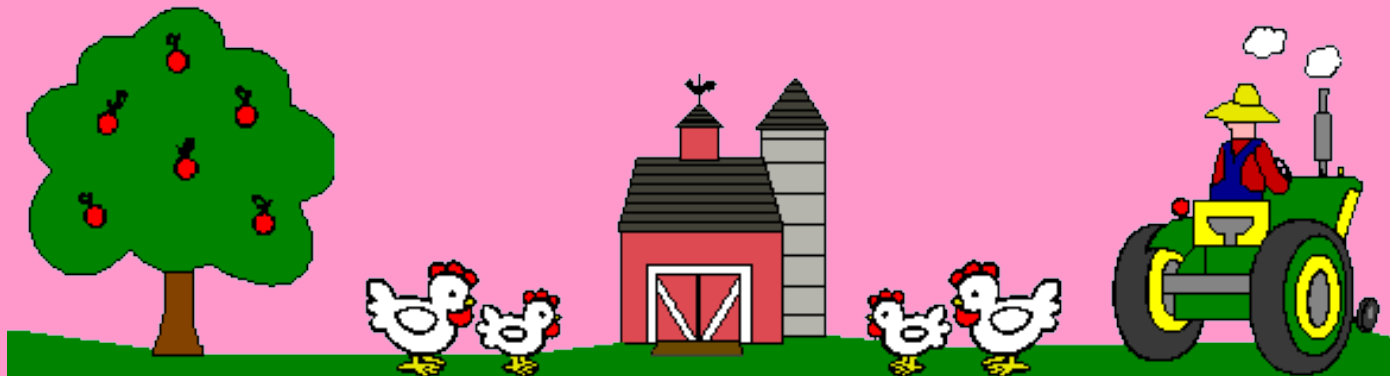
www.amonline.net.au/spiders

<http://www.spiderzrule.com>

<http://www.uark.edu/~dksander/spiders.html>

4. As you read this wonderful book there must have been a chapter or scene that really stuck out in your mind. Think about the details of that scene. What characters were in that scene?

Make a Scene



5. After you have finished all the other activities you may play the games with your partner from the links below.

Have fun!

<http://www.quia.com/hm/22969.html>

<http://www.quia.com/rr/8874.html>



Resources

Resources needed for the WebQuest are computers with internet access, and printers.

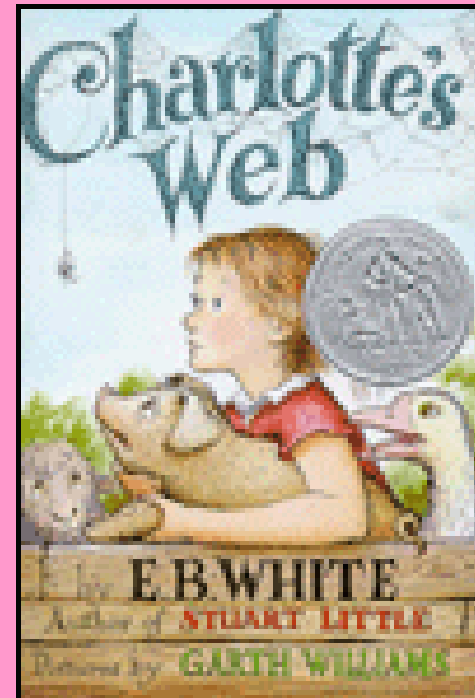
Students must also be provided with the book *Charlotte's Web*.



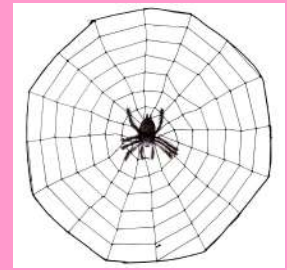
Evaluation

Use this rubric to evaluate your own work before turning it all in to me.

Rubric



Conclusion

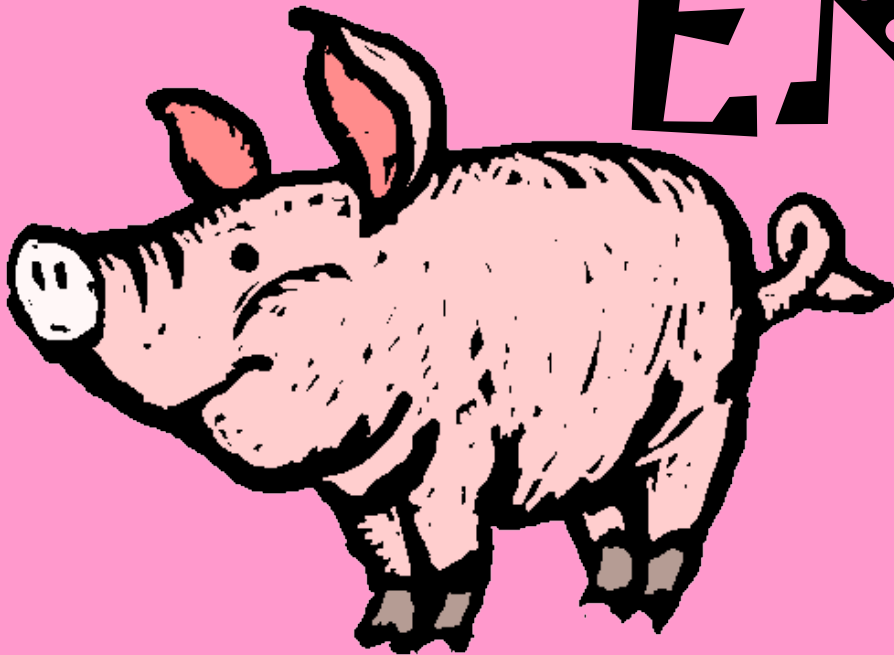


Congratulations, you have successfully completed this WebQuest! As you can see, Charlotte's Web contains many educational lessons; from farmers to spiders, you have spent much time exploring certain themes based on this **CLASSIC** story.

Many students, just like you, have read this tale that highlights the nature of relationships, even if presented from the perspective of animals!

Your skills, observations, and creativity were put to the test. Good Job in getting through the various assignments that were designed to make your learning experience fun-one that will stay with you for life!

THE
END



68	792	755	955	80	1,928	71
195	50	467	646	533	8,127	88
3,356	90	1,251	16	91	31	880
18	23	601	225	80	3,186	212
712	351	68	677	405	901	234
467	331	646	4,921	1,251	876	41
95	50	533	142	11	419	2,300
200	351	2,300	750	90	207	212
18	630	1,251	509	225	792	1,010
90	68	195	601	3,356	880	909
351	200	712	467	18	755	71
712	792	174	16	14	207	88
909	1,099	755	646	552	630	910
1,010	88	212	95	677	142	11
2,300	99	880	901	234	61	677
50	468	200	1,099	174	16	405
533	80	195	4,820	405	509	99
601	1,094	95	1,309	71	331	909
3,356	792	207	646	11	142	1,010

Templeton the rat thinks your life is too easy, so he has created a math maze that he knows will stump you!

Directions: Solve the problems below and color in all the squares that have the matching answer. (You will need to color in more than one box for each answer.) When you are finished you will see a message from Templeton.

Scroll Down for Problems to Solve:



Print this page and the next.

Solve:

1. $\begin{array}{r} 75 \\ \times 3 \\ \hline \end{array}$

2. $\begin{array}{r} 800 \\ - 469 \\ \hline \end{array}$

3. $\begin{array}{r} 756 \\ + 199 \\ \hline \end{array}$

4. $\begin{array}{r} 70 \\ \times 9 \\ \hline \end{array}$

5. $\begin{array}{r} 600 \\ - 569 \\ \hline \end{array}$

6. $\begin{array}{r} 99 \\ + 369 \\ \hline \end{array}$

7. $\begin{array}{r} 58 \\ \times 3 \\ \hline \end{array}$

8. $\begin{array}{r} 315 \\ - 299 \\ \hline \end{array}$

9. $\begin{array}{r} 950 \\ + 149 \\ \hline \end{array}$

10. $\begin{array}{r} 99 \\ \times 8 \\ \hline \end{array}$

11. $\begin{array}{r} 305 \\ - 98 \\ \hline \end{array}$

12. $\begin{array}{r} 97 \\ + 653 \\ \hline \end{array}$

13. $\begin{array}{r} 964 \\ \times 5 \\ \hline \end{array}$

14. $\begin{array}{r} 705 \\ - 196 \\ \hline \end{array}$

15. $\begin{array}{r} 497 \\ + 379 \\ \hline \end{array}$

16. $\begin{array}{r} 703 \\ \times 7 \\ \hline \end{array}$

17. $\begin{array}{r} 301 \\ - 278 \\ \hline \end{array}$

18. $\begin{array}{r} 936 \\ + 158 \\ \hline \end{array}$

19. $\begin{array}{r} 138 \\ \times 4 \\ \hline \end{array}$

20. $\begin{array}{r} 409 \\ - 329 \\ \hline \end{array}$

21. $\begin{array}{r} 982 \\ + 269 \\ \hline \end{array}$

22. $\begin{array}{r} 964 \\ \times 2 \\ \hline \end{array}$

23. $\begin{array}{r} 516 \\ - 97 \\ \hline \end{array}$

24. $\begin{array}{r} 47 \\ + 599 \\ \hline \end{array}$

25. $\begin{array}{r} 903 \\ \times 9 \\ \hline \end{array}$

26. $\begin{array}{r} 702 \\ - 688 \\ \hline \end{array}$

27. $\begin{array}{r} 458 \\ + 297 \\ \hline \end{array}$

28. $\begin{array}{r} 531 \\ \times 6 \\ \hline \end{array}$

29. $\begin{array}{r} 201 \\ - 59 \\ \hline \end{array}$

30. $\begin{array}{r} 928 \\ + 381 \\ \hline \end{array}$

Charlotte's Web WebQuest Rubric

Areas of Evaluation	Excellent	Satisfactory	Needs Improvement
Follows Directions	3	2	1
Works cooperatively with partner	3	2	1
Completes crossword puzzle	3	2	1
Completes Mystery Quotes	3	2	1
Completes Venn Diagram	3	2	1
Completes Question Puzzle	3	2	1
Completes Web of Problems	3	2	1
Completes Templeton's Math Sheet	3	2	1
Completes Spider Graphic Organizer	3	2	1
Completes Diorama	3	2	1