

# Chapter 1

## Introduction to Medical Terminology

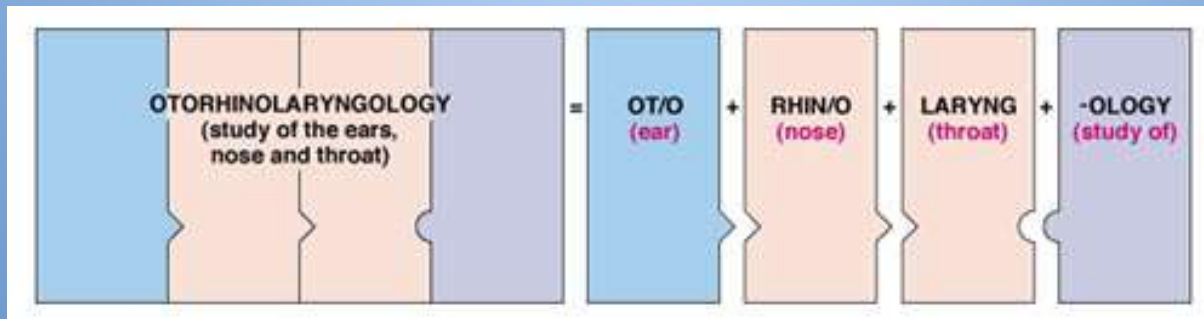
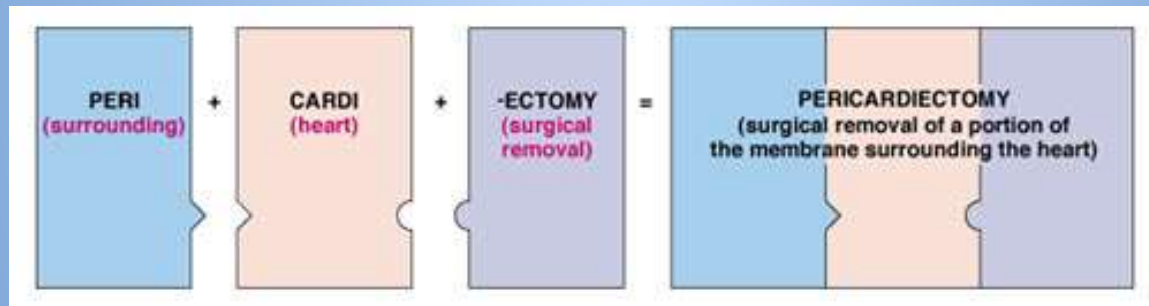
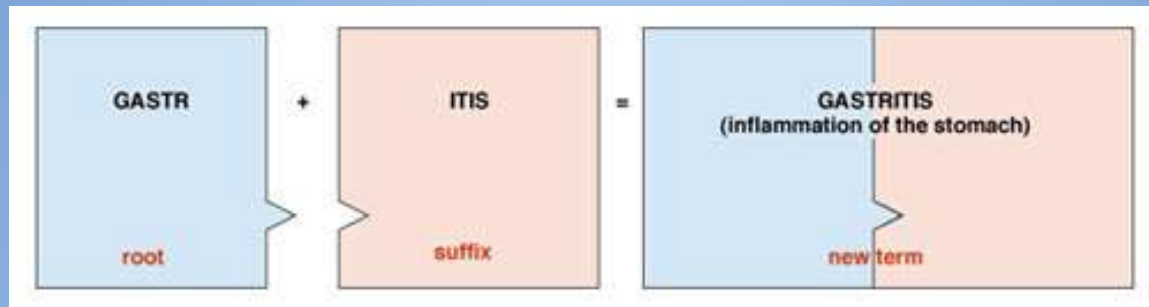
# Word Parts Are the Key!

- Three basic types of word parts are used to create complex medical terms:
  - Word roots contain the basic meaning of the term. They usually, but not always, indicate the involved body part
  - Suffixes usually, but not always, indicate the procedure, condition, disorder or disease. They always comes at the end of a word.
  - Prefixes usually, but not always, indicate location, time, number or status. They always come at the beginning of the word.

# Word Part Guidelines

- A word root cannot stand alone. A suffix must be added to complete the term.
- The rules for the use of combining vowels apply when a suffix is added to a word root
- When a prefix is necessary, it is always placed at the beginning of the word.

# Word Parts Are the Key!

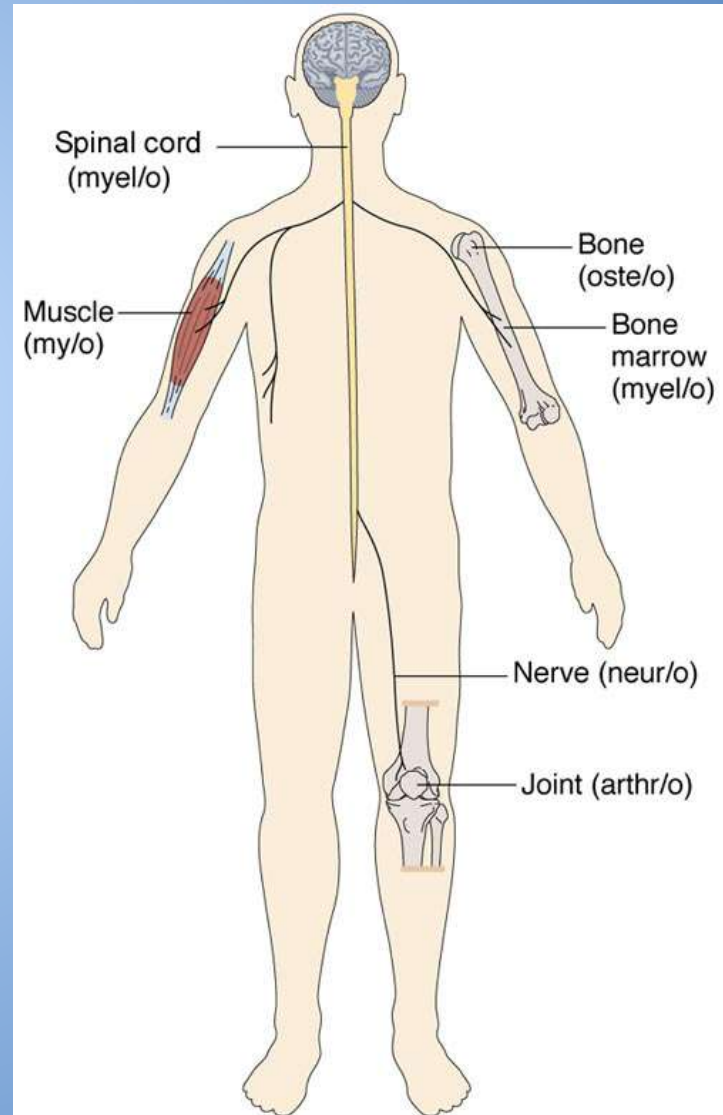


# Word Roots

- Examples:

- cardi = heart
- gastr = stomach
- neur = nerve

Note: Word roots do not mean pertaining to or relating to; that meaning comes from the suffix.

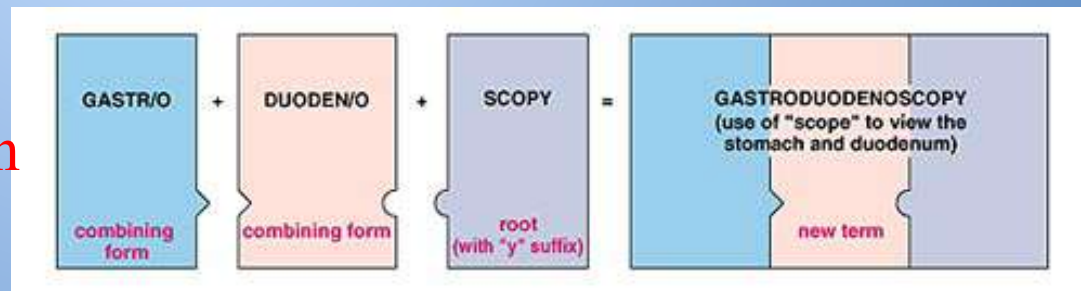


# Combining Forms

- Created by adding a vowel (usually the letter “o”) to the end of a word root.
- Used when **connecting word roots** or when the word root is joined to a **suffix that begins with a consonant**.

- Examples:

- cardi/o = heart
- gastr/o = stomach
- neur/o = nerve





# Suffixes

- Suffixes usually, but not always, indicate the procedure, condition, disorder, or disease.
- Examples:
  - cardi*megaly*
  - gastr*algia*
  - neur*itis*

# Prefixes

- Prefixes usually, but not always, indicate location, time, number, or status.
- Examples:
  - *peri*cardium
  - *epi*gastric
  - *poly*neuritis



## Words Indicating Color

Root Word	Definition	Example
<b>Cyan/o</b>	Blue	Cyanosis is a blue discoloration of the skin. (Cyan/o = blue; -osis = condition)
<b>Erythr/o</b>	Red	Erythrocytes are mature red blood cells (Erythro = red; cytes = cells)
<b>Melan/o</b>	Black	Melanosis is any condition of unusual deposits of black pigment in different parts of body (melan/o=black; -osis=condition)
<b>Leuk/o</b>	White	Leukocyte is a white blood cell (leuko = white; cyte = blood cell)
<b>Poli/o</b>	Grey	Poliomyelitis is a viral infection of the gray matter of the spinal cord (polio=gray; myel = spinal cord; -itis = inflammation)

# Determining Meanings on the Basis of Word Parts



- Always start at the end of the word (suffix) and work forward.
- Separate the word parts, identify the meaning of each
- Consider the context (since some words have different meanings)
- **Decipher these medical terms based on their word parts:**
  - Cardiologist: \_\_\_\_\_
  - Hepatitis: \_\_\_\_\_
  - Neuralgia: \_\_\_\_\_

# Determining Meanings on the Basis of Word Parts

- **More Practice** — first, highlight the suffix (what does it mean?). Second, circle the root (definition??). If there is a prefix, highlight it in a different color (what does it mean?). Now add them all together and what do you get????
- Pericarditis: \_\_\_\_\_
- Hepatomegaly: \_\_\_\_\_
- Gastritis: \_\_\_\_\_
- Hyperemesis: \_\_\_\_\_

# Basic Medical Terms

- A **sign** is evidence of disease; **objective**: visual findings
- A **symptom** can be observed only by the patient; **subjective**: patient tells you what they are feeling but its can't be seen
- A **syndrome** is a set of signs and symptoms that occur together as part of a specific disease process
- **Diagnosis** is the identification of the disease
- **Prognosis** is a forecast or prediction of the probable course and outcome of a disorder
- An **acute** disease has rapid onset and relatively short duration
- A **chronic** disease has a long duration and are rarely cured
- **Remission** is the disappearance of the symptoms of disease without having achieved a cure. Can be temporary.
- An **eponym** is a disease, structure, operation or procedure named for the person who discovered it

# Differential Diagnosis

- A differential diagnosis attempts to determine which one of several diseases may be producing the symptoms

# Condition Described

- Some diseases are named for the condition described.
- For example, Chronic Fatigue Syndrome (CFS) is a persistent overwhelming fatigue that does not resolve with bed rest.



# Acronym

- An acronym is a word formed from the initial letter or letters of the major parts of a compound term.

# BREAKDOWN

- Medical terms include pertinent word parts, not all the time
- Breakdown can sometimes be misleading
- Knowing the breakdown will help with the learning process
- Breakdown alone will not always give you the entire meaning of the term
- Useful tool for identifying procedure, anatomical site or condition

# EXAMPLES

- LEUK/EMIA - literally means blood condition of white; actual meaning is large increase in the number of cancerous abnormal white blood cells
- AUT/O/PSY - literally means process of viewing self; actual meaning is exam of dead body (with one's own eyes) to determine cause of death