

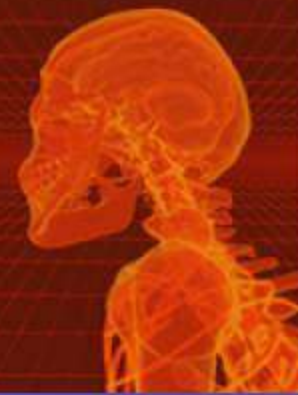
MEDICAL TERMINOLOGY

FOR HEALTH PROFESSIONS

ANN EHRLICH

CAROL L. SCHROEDER

Sixth Edition



Chapter 1

Introduction to Medical Terminology



DELMAR

CENGAGE Learning

© 2009 Delmar, Cengage Learning

Word Parts Are the Key!

- Three basic types of word parts are used to create complex medical terms:
 - **Prefixes** usually, but not always, indicate location, time, number or status. They **always come at the beginning of the word.**
 - **Word roots** contain the basic meaning of the term. They usually, but not always, indicate the involved body part
 - **Suffixes** usually, but not always, indicate the procedure, condition, disorder or disease. They **always comes at the end of a word.**



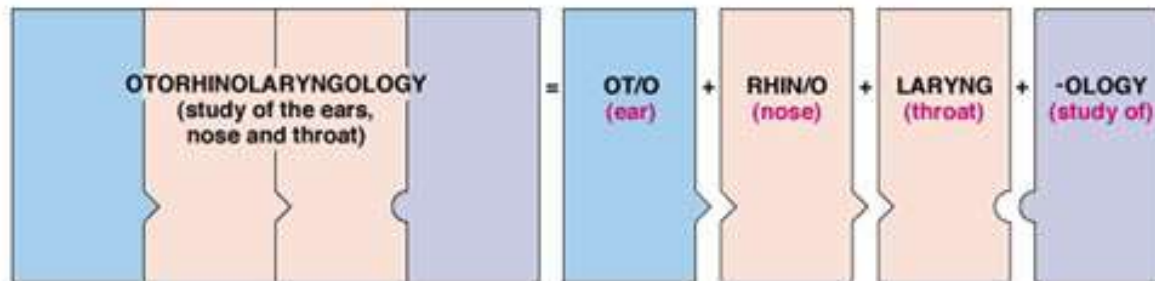
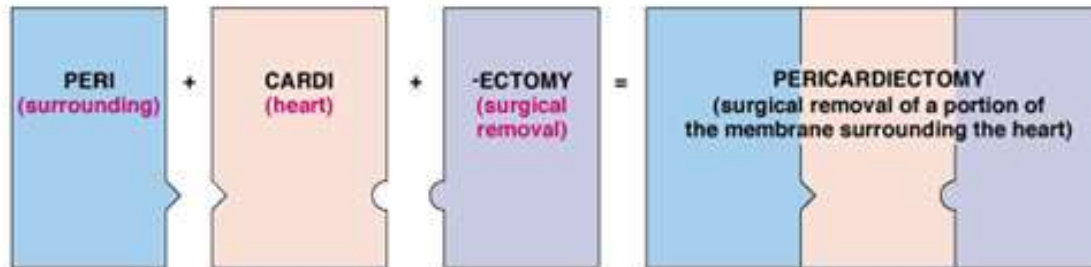
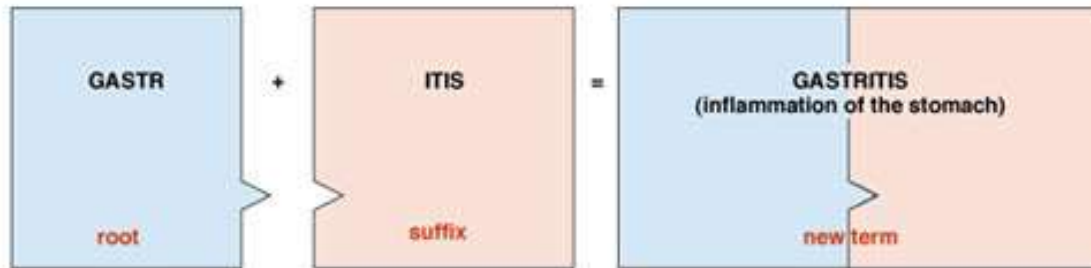
DELMAR

CENGAGE Learning™ © 2009 Delmar, Cengage Learning

- Cut out the paper around the black outline
- Fold on the dotted line (black side in the inside)
- Cut the dividing black lines
- Color prefix, root, and suffix flap different colors
- Glue into notebook



Word Parts Are the Key!



DELMAR

CENGAGE Learning™ © 2009 Delmar, Cengage Learning

Prefixes

- Prefixes usually, but not always, indicate location, time, number, or status.
- Examples:
 - *peri*cardium
 - *epi*gastric
 - *poly*neuritis

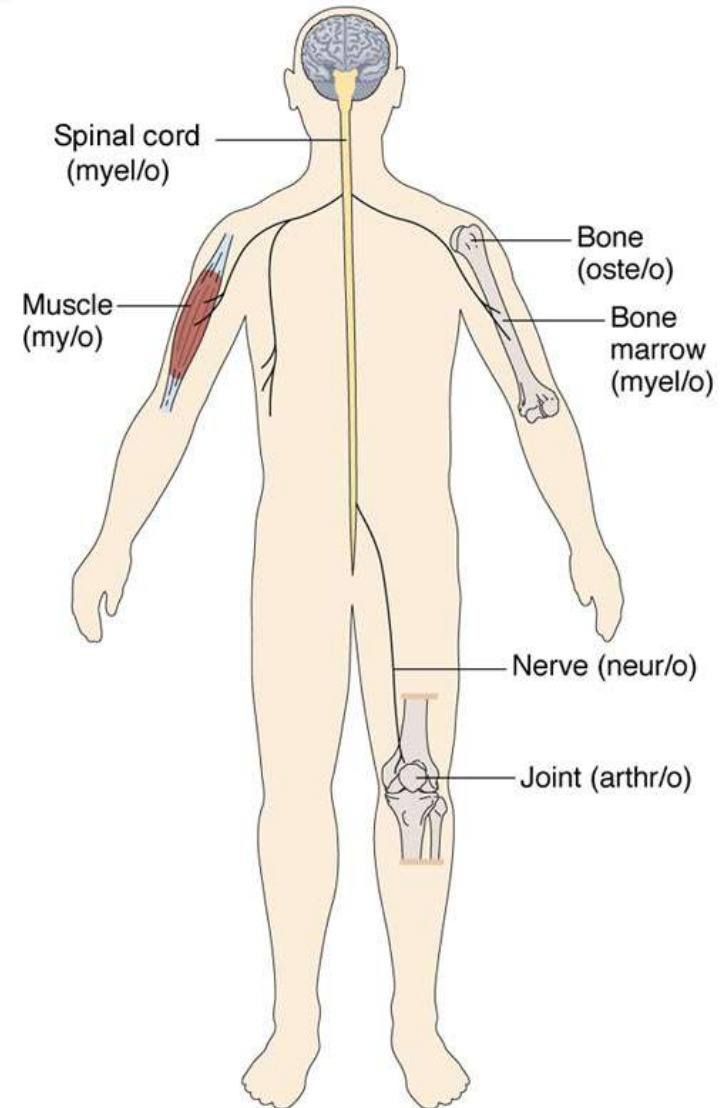


Word Roots

- Examples:

- cardi = heart
- gastr = stomach
- neur = nerve

Note: Word roots do not mean pertaining to or relating to; that meaning comes from the suffix.



DELMAR

CENGAGE Learning

© 2009 Delmar, Cengage Learning

Suffixes

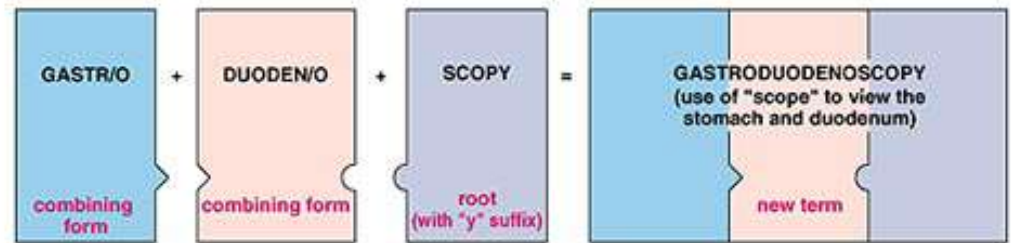
- Suffixes usually, but not always, indicate the procedure, condition, disorder, or disease.
- Examples:
 - cardio*megaly*
 - gastr*algia*
 - neur*itis*



Combining Forms

- Created by adding a vowel (usually the letter “o”) to the end of a word root.
- Used when **connecting word roots** or when the word root is joined to a **suffix that begins with a consonant**.
- Examples:

- **cardi/o** = heart
- **gastr/o** = stomach
- **neur/o** = nerve



Words Indicating Color

Root Word	Definition	Example
Cyan/o	Blue	Cyanosis is a blue discoloration of the skin. (Cyan = blue; -osis = condition)
Erythr/o	Red	Erythrocytes are mature red blood cells (Erythro = red; cytes = cells)
Melan/o	Black	Melanosis is any condition of unusual deposits of black pigment in different parts of body (melan/o=black; -osis=condition)
Leuk/o	White	Leukocyte is a white blood cell (leuko = white; cyte = blood cell)
Poli/o	Grey	Poliomyelitis is a viral infection of the gray matter of the spinal cord (polio=gray; myel = spinal cord; -itis = inflammation)



Determining Meanings on the Basis of Word Parts



- Always start at the end of the word (suffix) and work forward.
- Separate the word parts, identify the meaning of each
- Consider the context (since some words have different meanings)
- **Decipher these medical terms based on their word parts:**
 - Cardiologist: _____
 - Hepatitis: _____
 - Neuralgia: _____



DELMAR

CENGAGE Learning

© 2009 Delmar, Cengage Learning

Determining Meanings on the Basis of Word Parts

- **More Practice** — first, highlight the suffix (what does it mean?). Second, circle the root (definition??). If there is a prefix, highlight it in a different color (what does it mean?). Now add them all together and what do you get????
- Pericarditis: _____
- Hepatomegaly: _____
- Gastritis: _____
- Hyperemesis: _____



DELMAR

CENGAGE Learning

© 2009 Delmar, Cengage Learning

Basic Medical Terms

- A **sign** is evidence of disease
- A **symptom** can be observed only by the patient
- A **syndrome** is a set of signs and symptoms that occur together as part of a specific disease process.
- **Diagnosis** is the identification of the disease
- **Prognosis** is a forecast or prediction of the probably course and outcome of a disorder
- An **acute** disease has rapid onset and relatively short duration
- A **chronic** disease has a long duration and are rarely cured
- **Remission** is the disappearance of the symptoms of disease without having achieved a cure. Can be temporary.
- An **eponym** is a disease, structure, operation or procedure named for the person who discovered it



DELMAR

CENGAGE Learning™ © 2009 Delmar, Cengage Learning