

- The Digestive System

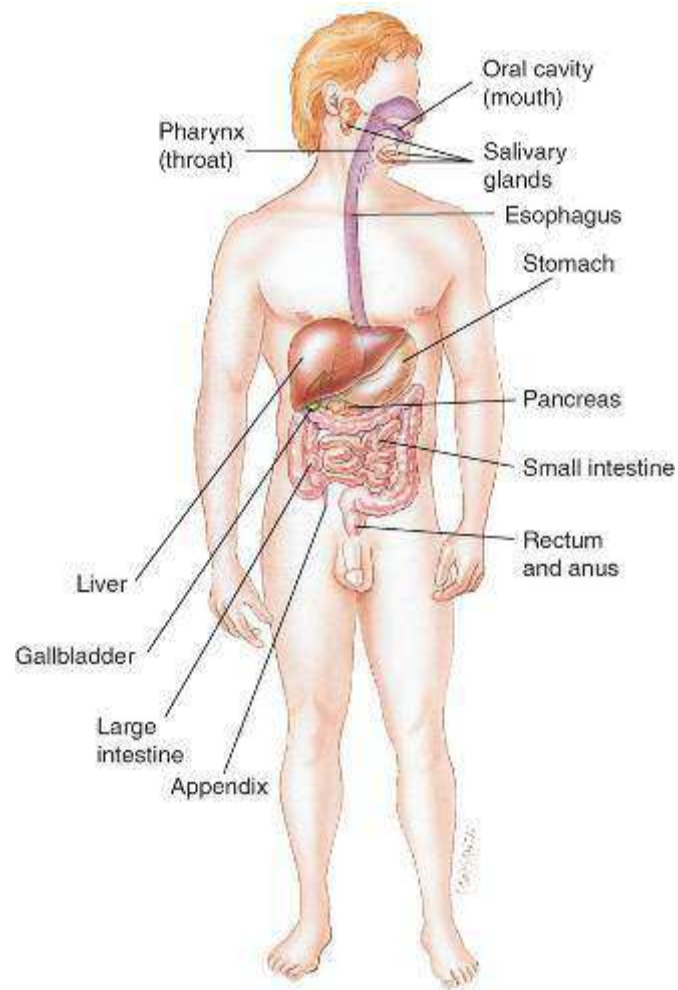
Overview of Structures, Combining Forms, and Functions



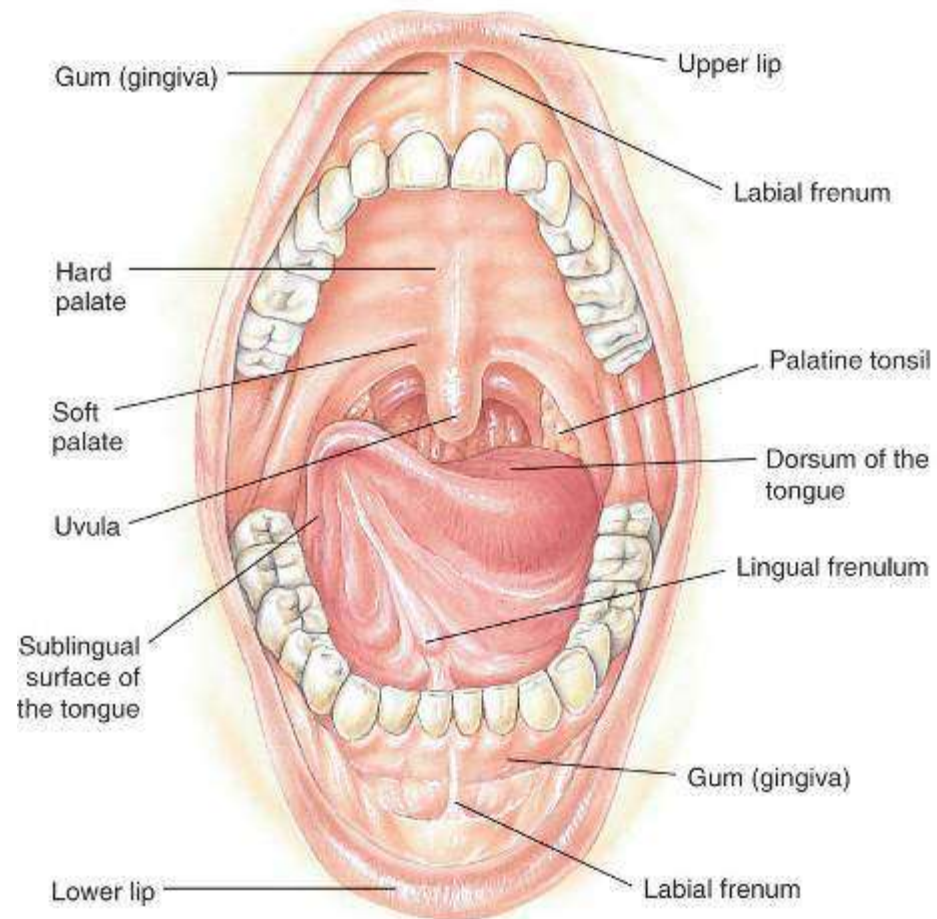
DELMAR

CENGAGE Learning™

© 2009 Delmar, Cengage Learning



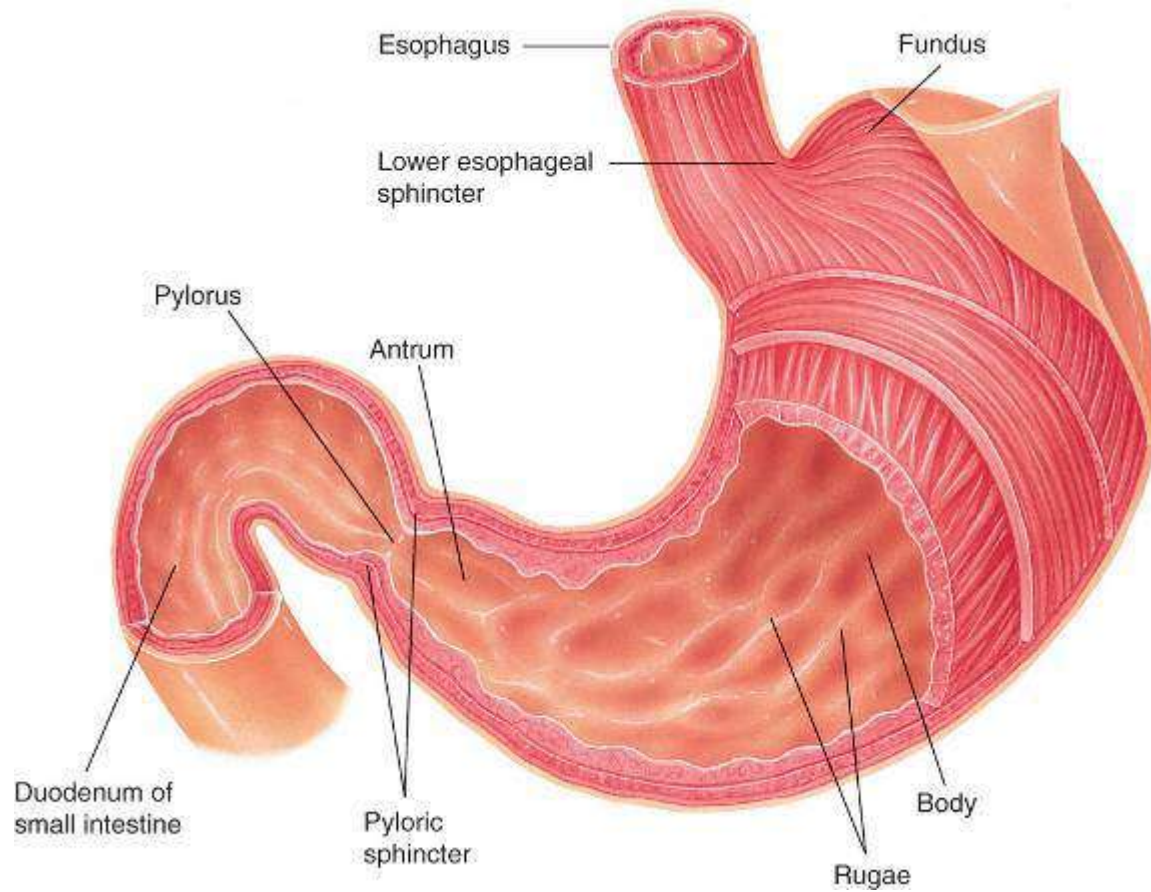
- Primary Function
 - Begins preparation of food for digestion.
- Related Combining Forms
 - or/o
 - stomat/o



- Primary Function
 - Transports food from the mouth to the esophagus.
- Related Combining Form
 - pharyng/o

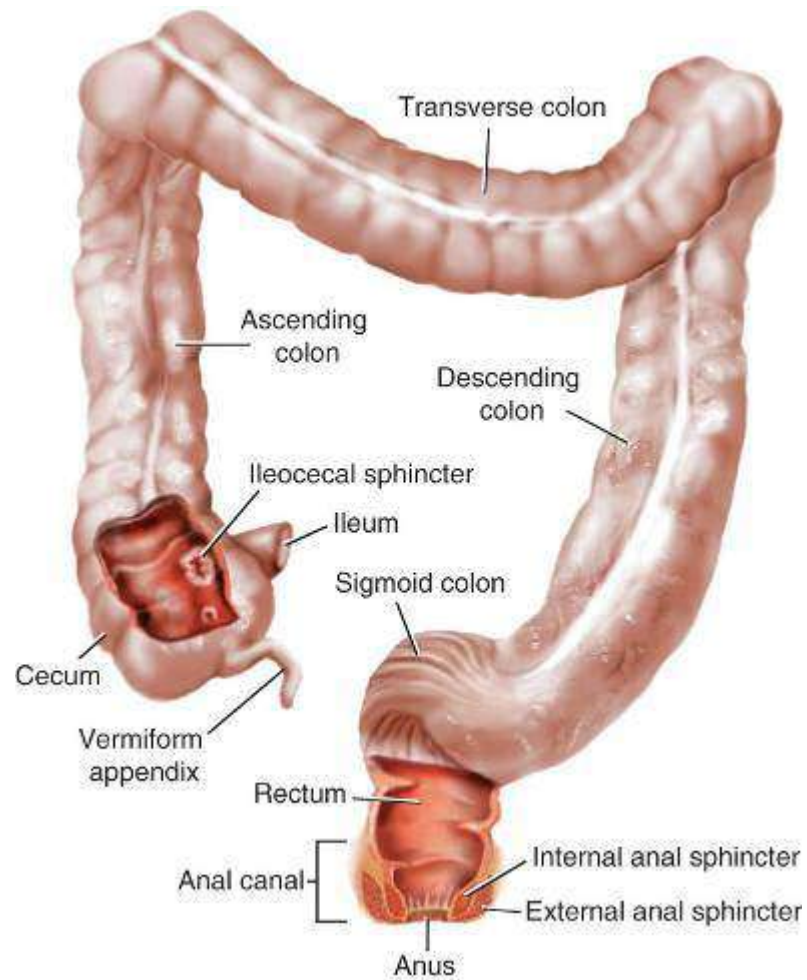
- Primary Function
 - Transports food from the pharynx to the stomach.
- Related Combining Form
 - esophag/o

- Primary Functions
 - Breaks down food and mixes it with digestive juices.
- Related Combining Form
 - gastr/o



- Primary Functions
 - Completes digestion and absorption of most nutrients.
- Related Combining Form
 - enter/o

- Primary Functions
 - Absorbs excess water.
 - Prepares solid waste for elimination.
- Related Combining Forms
 - col/o, colon/o



- Primary Function
 - Controls the excretion of solid waste.
- Related Combining Forms
 - an/o
 - proct/o
 - rect/o

- Primary Function
 - Secretes bile and enzymes to aid in the digestion of fats.
- Related Combining Form
 - hepat/o

- Primary Functions
 - Stores bile and releases it to the small intestine as needed.
- Related Combining Form
 - **cholecyst/o**

- Primary Functions

- Secretes digestive juices and enzymes into small intestine as needed.

- Related Combining Form

- pancreat/o

Animations



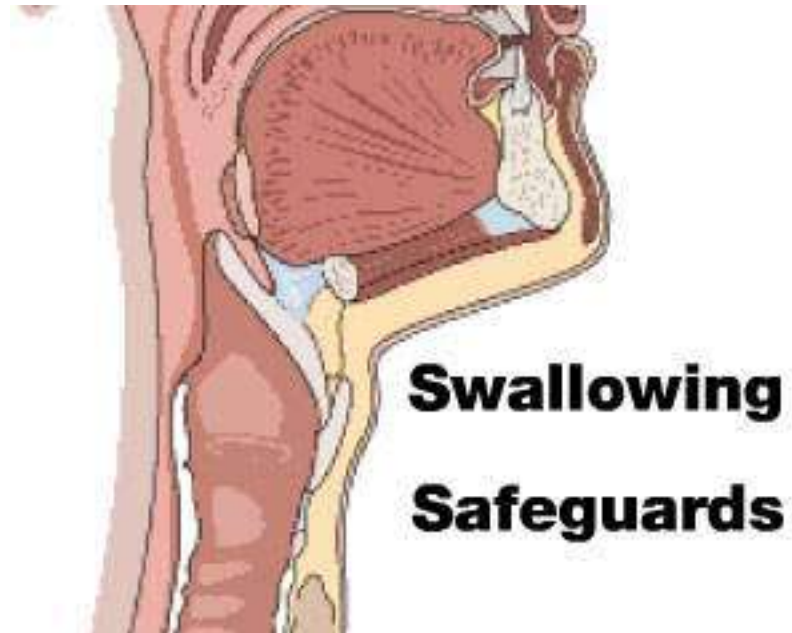
DELMAR

CENGAGE Learning™

© 2009 Delmar, Cengage Learning



[Click here to play
Digestion animation](#)



[Click Here to play Swallowing Safeguards animation](#)

Answers to Learning Exercises



DELMAR

CENGAGE Learning™

© 2009 Delmar, Cengage Learning

Matching Word Parts 1

8.1. *an/o*

8.2. *chol/e*

8.3. *col/o*

8.4. *-phagia*

8.5. *enter/o*

Matching Word Parts 2

8.6. *gastr/o*

8.7. *hepat/o*

8.8. *cholecyst/o*

8.9. *esophag/o*

8.10. *-lithiasis*

Matching Word Parts 3

8.11. *sigmoid/o*

8.12. *proct/o*

8.13. *-pepsia*

8.14. *-emesis*

8.15. *rect/o*

Definitions

8.16. anoscopy

8.17. stomatomycosis

8.18. ileum

8.19. glucose

8.20. bile

Definitions

8.21. ascending colon

8.22. anabolism

8.23. tongue

8.24. periodontium

8.25. intussusception

Matching Structures

8.26. cecum

8.27. sigmoid colon

8.28. rectum

8.29. jejunum

8.30. duodenum

Which Word?

8.31. hematemesis

8.32. hepatitis A

8.33. Botulism

8.34. enteritis

8.35. uvula

Spelling Counts

8.36. ileectomy

8.37. epiglottis

8.38. hepatorrhaphy

8.39. proctopexy

8.40. xerostomia

Abbreviation

Identification

8.41. cholecystectomy

8.42. colorectal
carcinoma

8.43. gastroesophageal
reflux disease

8.44. irritable bowel
syndrome

8.45. peptic ulcer

Term Selection

8.46. gastrectomy

8.47. dysphagia

8.48. amebic dysentery

8.49. cirrhosis

8.50. bilirubin

Sentence Completion

8.51. aerophagia

8.52. regurgitation

8.53. jaundice

8.54. pyloric sphincter

8.55. feces

Word Surgery

8.56. *esophag/o, gastr/o, duoden/o, -scopy*

8.57. *peri-, odont, -ist*

8.58. *sigmoid/o, -scopy*

8.59. *anti-, emet, -ic*

8.60. *gastr/o, duoden, -ostomy*

True/False

8.61. True

8.62. False

8.63. True

8.64. False

8.65. True

Clinical Conditions

8.66. ileus

8.67. ascites

8.68. edentulous

8.69. hyperemesis

8.70. colostomy

Clinical Conditions

8.71. pyrosis

8.72. melena

8.73. diverticulitis

8.74. herpes labialis

8.75. halitosis

Which Is the Correct Medical Term?

8.76. Hemoccult

8.77. anastomosis

8.78. anorexia nervosa

8.79. calculus

8.80. proctoplasty

Challenge Word Building

8.81. gastrorrhaphy

8.82. esophagalgia

8.83. sigmoidectomy

8.84. proctalgia

8.85. gastropexy

8.86. sigmoiditis

8.87. esophagogastrrectomy

8.88. hepatoenteric

8.89. hepatomegaly

8.90. gastroenterocolitis

Labeling Exercises

8.91. salivary

8.92. esophagus

8.93. stomach

8.94. pancreas

8.95. liver

8.96. gallbladder

8.97. large

8.98. appendix

8.99. small

8.100. rectum