

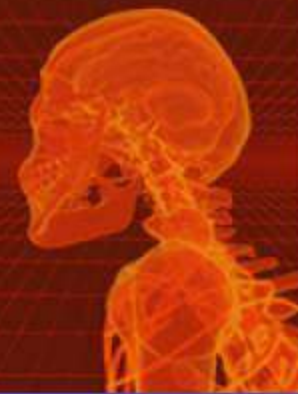
MEDICAL TERMINOLOGY

FOR HEALTH PROFESSIONS

ANN EHRLICH

CAROL L. SCHROEDER

Sixth Edition



Chapter 8

The Digestive System



DELMAR

CENGAGE Learning

© 2009 Delmar, Cengage Learning

Overview of Structures, Combining Forms, and Functions

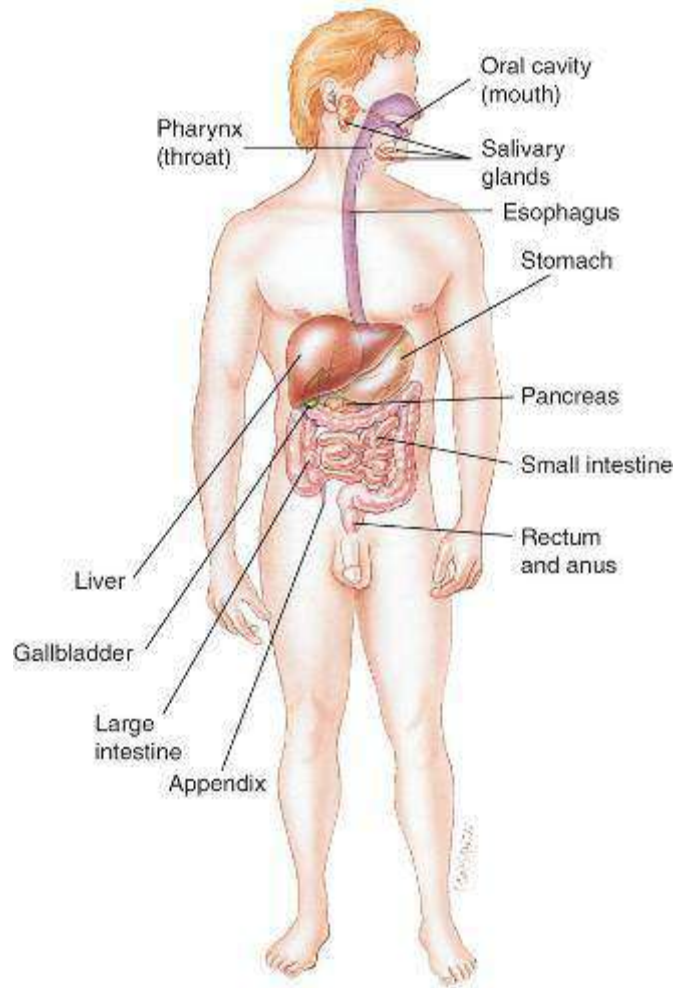


DELMAR

CENGAGE Learning™

© 2009 Delmar, Cengage Learning

Major Structures and Accessory Organs of the Digestive System



DELMAR

CENGAGE Learning™

© 2009 Delmar, Cengage Learning

Mouth

- Primary Function
 - Begins preparation of food for digestion.
- Related Combining Forms
 - or/o
 - stomat/o

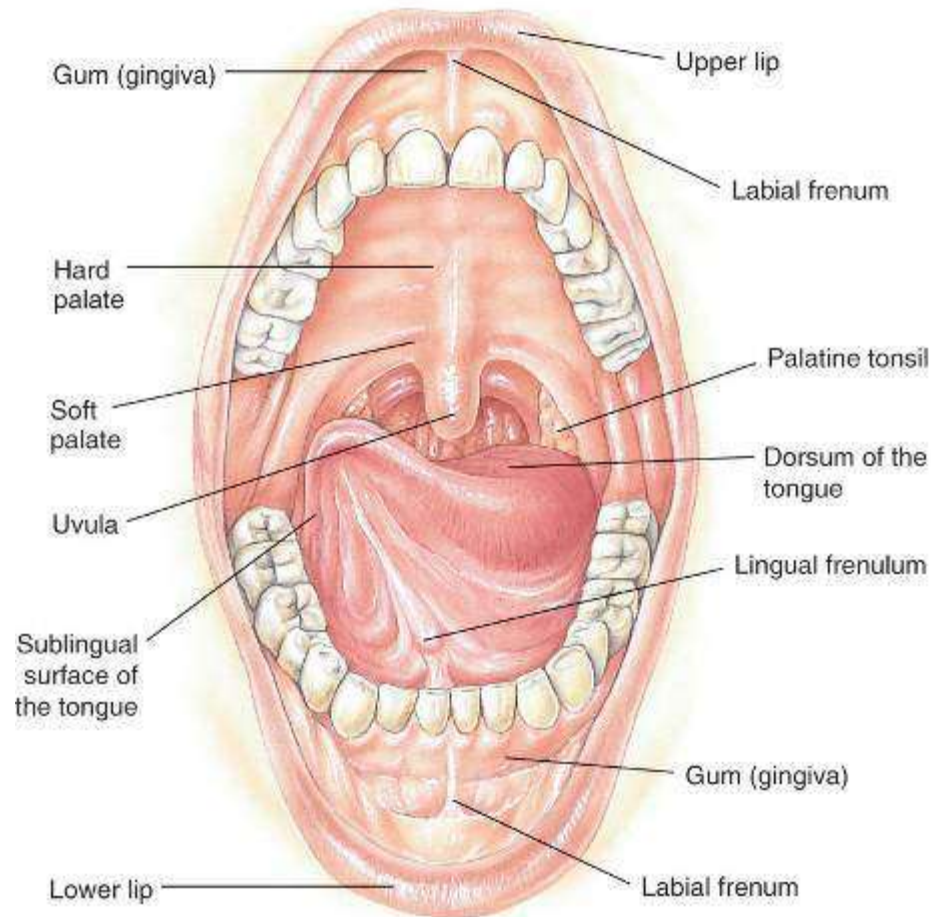


DELMAR

CENGAGE Learning

© 2009 Delmar, Cengage Learning

Structures of the Tongue and Oral Cavity



DELMAR

CENGAGE Learning

© 2009 Delmar, Cengage Learning

Pharynx

- Primary Function
 - Transports food from the mouth to the esophagus.
- Related Combining Form
 - pharyng/o



Esophagus

- Primary Function
 - Transports food from the pharynx to the stomach.
- Related Combining Form
 - esophag/o

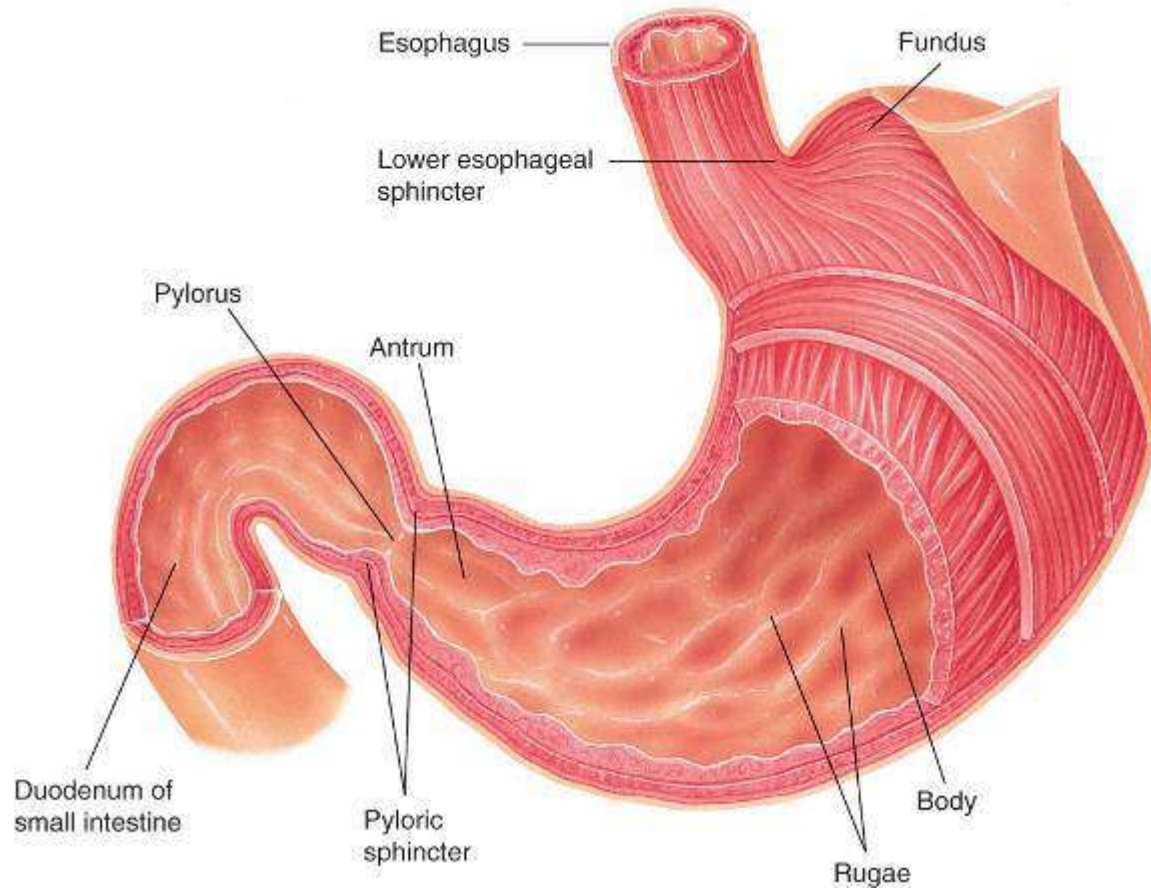


Stomach

- Primary Functions
 - Breaks down food and mixes it with digestive juices.
- Related Combining Form
 - gastr/o



Structures of the Stomach



DELMAR

CENGAGE Learning

© 2009 Delmar, Cengage Learning

Small Intestines

- Primary Functions
 - Completes digestion and absorption of most nutrients.
- Related Combining Form
 - enter/o



DELMAR

CENGAGE Learning™

© 2009 Delmar, Cengage Learning

Large Intestines

- Primary Functions
 - Absorbs excess water.
 - Prepares solid waste for elimination.
- Related Combining Forms
 - col/o, colon/o

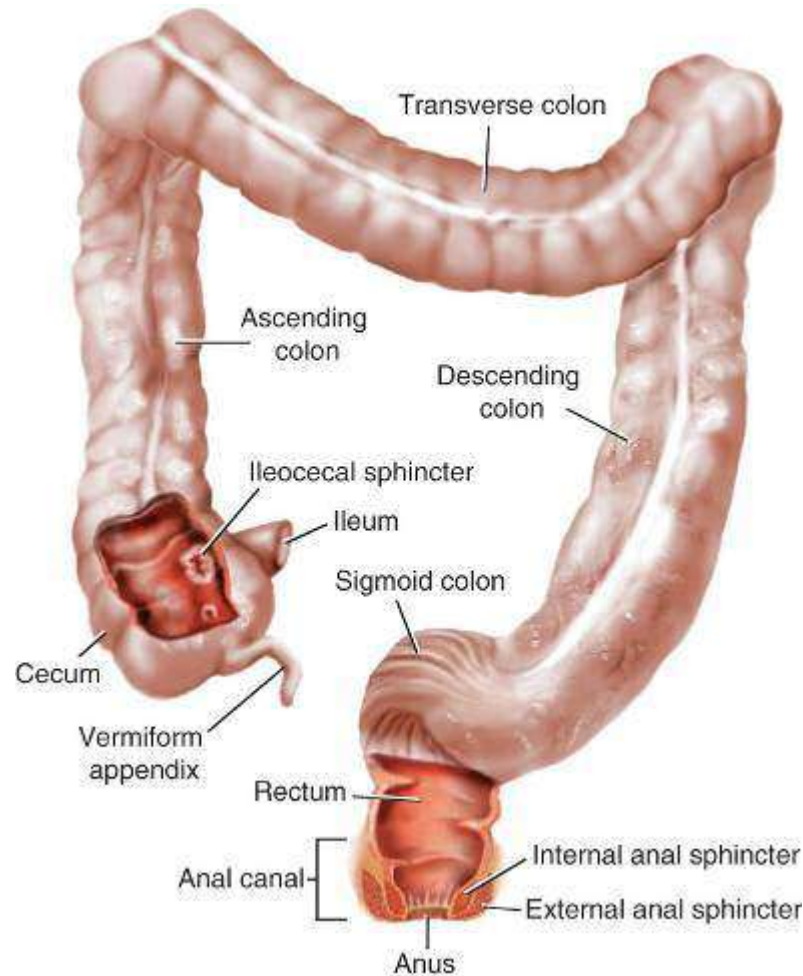


DELMAR

CENGAGE Learning

© 2009 Delmar, Cengage Learning

Structures of the Large Intestine



DELMAR

CENGAGE Learning™

© 2009 Delmar, Cengage Learning

Rectum and Anus

- Primary Function
 - Controls the excretion of solid waste.
- Related Combining Forms
 - an/o
 - proct/o
 - rect/o



DELMAR

CENGAGE Learning™ © 2009 Delmar, Cengage Learning

Liver

- Primary Function
 - Secretes bile and enzymes to aid in the digestion of fats.
- Related Combining Form
 - hepat/o



Gallbladder

- Primary Functions
 - Stores bile and releases it to the small intestine as needed.
- Related Combining Form
 - **cholecyst/o**



Pancreas

- Primary Functions
 - Secretes digestive juices and enzymes into small intestine as needed.
- Related Combining Form
 - pancreat/o



Animations



DELMAR

CENGAGE Learning™

© 2009 Delmar, Cengage Learning

Digestion



[Click here to play
Digestion animation](#)

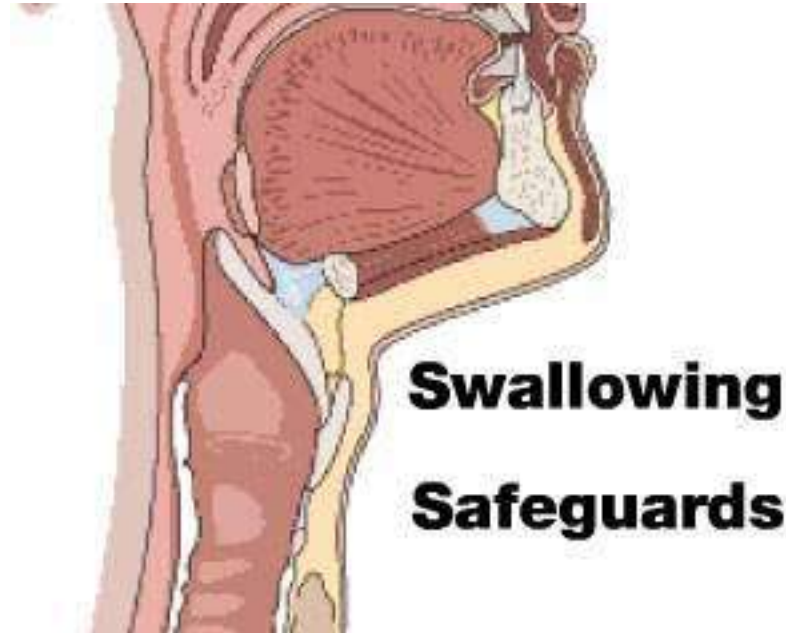


DELMAR

CENGAGE Learning™

© 2009 Delmar, Cengage Learning

Swallowing Safeguards



[Click Here to play Swallowing Safeguards animation](#)



DELMAR

CENGAGE Learning™

© 2009 Delmar, Cengage Learning

Answers to Learning Exercises



DELMAR

CENGAGE Learning™

© 2009 Delmar, Cengage Learning

Chapter 8 Answers

Matching Word Parts 1

8.1. *an/o*

8.2. *chol/e*

8.3. *col/o*

8.4. *-phagia*

8.5. *enter/o*

Matching Word Parts 2

8.6. *gastr/o*

8.7. *hepat/o*

8.8. *cholecyst/o*

8.9. *esophag/o*

8.10. *-lithiasis*



DELMAR

CENGAGE Learning

© 2009 Delmar, Cengage Learning

Chapter 8 Answers

Matching Word Parts 3

8.11. *sigmoid/o*

8.12. *proct/o*

8.13. *-pepsia*

8.14. *-emesis*

8.15. *rect/o*

Definitions

8.16. anoscopy

8.17. stomatomycosis

8.18. ileum

8.19. glucose

8.20. bile



DELMAR

CENGAGE Learning

© 2009 Delmar, Cengage Learning

Chapter 8 Answers

Definitions

8.21. ascending colon

8.22. anabolism

8.23. tongue

8.24. periodontium

8.25. intussusception

Matching Structures

8.26. cecum

8.27. sigmoid colon

8.28. rectum

8.29. jejunum

8.30. duodenum



DELMAR

CENGAGE Learning

© 2009 Delmar, Cengage Learning

Chapter 8 Answers

Which Word?

8.31. hematemesis

8.32. hepatitis A

8.33. Botulism

8.34. enteritis

8.35. uvula

Spelling Counts

8.36. ileectomy

8.37. epiglottis

8.38. hepatorrhaphy

8.39. proctopexy

8.40. xerostomia



DELMAR

CENGAGE Learning

© 2009 Delmar, Cengage Learning

Chapter 8 Answers

Abbreviation

Identification

- 8.41. cholecystectomy
- 8.42. colorectal carcinoma
- 8.43. gastroesophageal reflux disease
- 8.44. irritable bowel syndrome
- 8.45. peptic ulcer

Term Selection

- 8.46. gastrectomy
- 8.47. dysphagia
- 8.48. amebic dysentery
- 8.49. cirrhosis
- 8.50. bilirubin



DELMAR

CENGAGE Learning © 2009 Delmar, Cengage Learning

Chapter 8 Answers

Sentence Completion

8.51. aerophagia

8.52. regurgitation

8.53. jaundice

8.54. pyloric sphincter

8.55. feces

Word Surgery

8.56. *esophag/o, gastr/o, duoden/o, -scopy*

8.57. *peri-, odont, -ist*

8.58. *sigmoid/o, -scopy*

8.59. *anti-, emet, -ic*

8.60. *gastr/o, duoden, -ostomy*



DELMAR

CENGAGE Learning

© 2009 Delmar, Cengage Learning

Chapter 8 Answers

True/False

8.61. True

8.62. False

8.63. True

8.64. False

8.65. True

Clinical Conditions

8.66. ileus

8.67. ascites

8.68. edentulous

8.69. hyperemesis

8.70. colostomy



DELMAR

CENGAGE Learning

© 2009 Delmar, Cengage Learning

Chapter 8 Answers

Clinical Conditions

8.71. pyrosis

8.72. melena

8.73. diverticulitis

8.74. herpes labialis

8.75. halitosis

Which Is the Correct Medical Term?

8.76. Hemoccult

8.77. anastomosis

8.78. anorexia nervosa

8.79. calculus

8.80. proctoplasty



DELMAR

CENGAGE Learning

© 2009 Delmar, Cengage Learning

Chapter 8 Answers

Challenge Word Building

8.81. gastrorrhaphy

8.82. esophagalgia

8.83. sigmoidectomy

8.84. proctalgia

8.85. gastropexy

8.86. sigmoiditis

8.87. esophagogastrrectomy

8.88. hepatoenteric

8.89. hepatomegaly

8.90. gastroenterocolitis



DELMAR

CENGAGE Learning

© 2009 Delmar, Cengage Learning

Chapter 8 Answers

Labeling Exercises

8.91. salivary

8.92. esophagus

8.93. stomach

8.94. pancreas

8.95. liver

8.96. gallbladder

8.97. large

8.98. appendix

8.99. small

8.100. rectum



DELMAR

CENGAGE Learning

© 2009 Delmar, Cengage Learning