

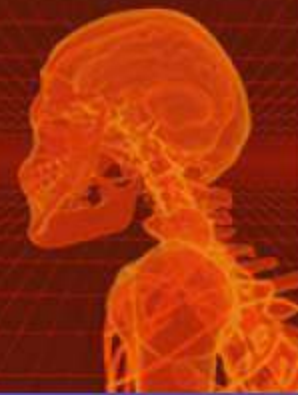
MEDICAL TERMINOLOGY

FOR HEALTH PROFESSIONS

ANN EHRLICH

CAROL L. SCHROEDER

Sixth Edition



Chapter 1

Introduction to Medical Terminology



DELMAR

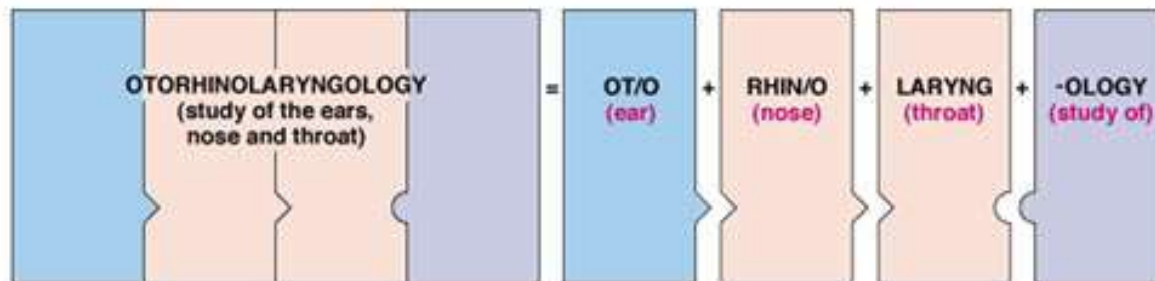
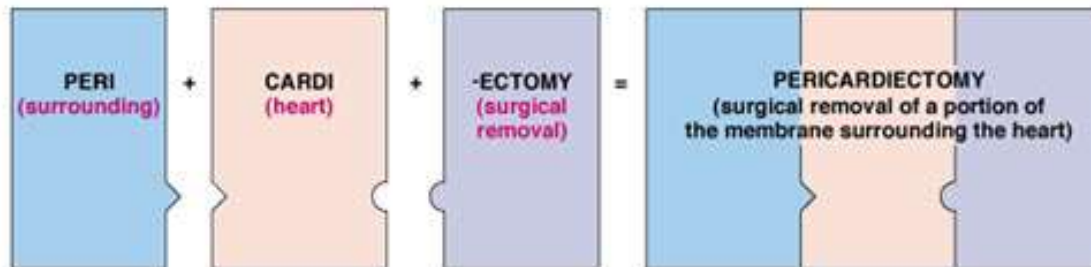
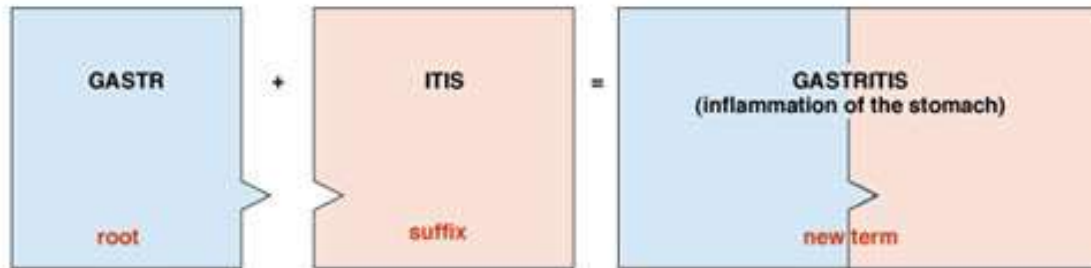
CENGAGE Learning

© 2009 Delmar, Cengage Learning

Word Parts Are the Key!

- Three basic types of word parts are used to create complex medical terms:
 - _____ contain the basic meaning of the term. They usually, but not always, indicate the involved body part
 - _____ usually, but not always, indicate the procedure, condition, disorder or disease. They always comes at the end of a word.
 - _____ usually, but not always, indicate location, time, number or status. They always come at the beginning of the word.

Word Parts Are the Key!



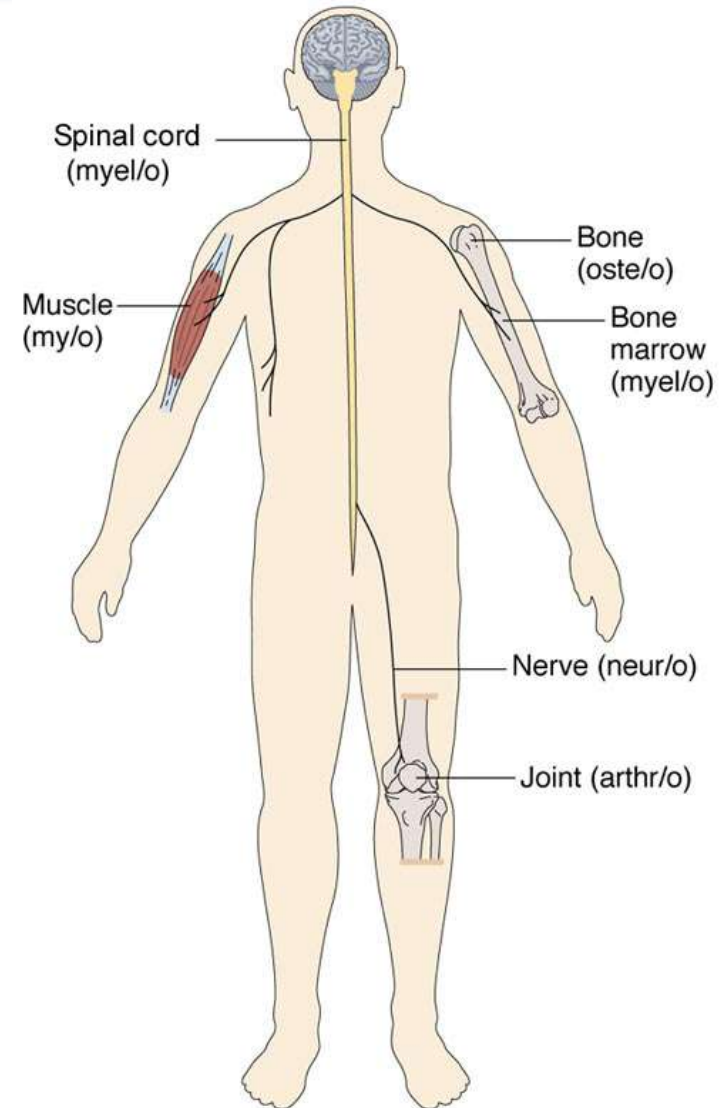
DELMAR

CENGAGE Learning™ © 2009 Delmar, Cengage Learning

Word Roots

- Examples:
 - cardi = heart
 - gastr = stomach
 - neur = nerve

Note: Word roots do not mean pertaining to or relating to; that meaning comes from the suffix.



Word Roots

Word Roots Indicating Color		
Root Word	Definition	Example
Cyan/o	Blue	Cyanosis is a blue discoloration of the skin. (Cyan = blue; -osis = condition)
Erythr/o	Red	Erythrocytes are mature red blood cells (Erythro = red; cytes = cells)
Melan/o	Black	Melanosis is any condition of unusual deposits of black pigment in different parts of body (melan/o=black; -osis=condition)
Leuk/o	White	Leukocyte is a white blood cell (leuko = white; cyte = blood cell)
Poli/o	Grey	Poliomyelitis is a viral infection of the gray matter of the spinal cord (polio=gray; myel = spinal cord; -itis = inflammation)



DELMAR

CENGAGE Learning

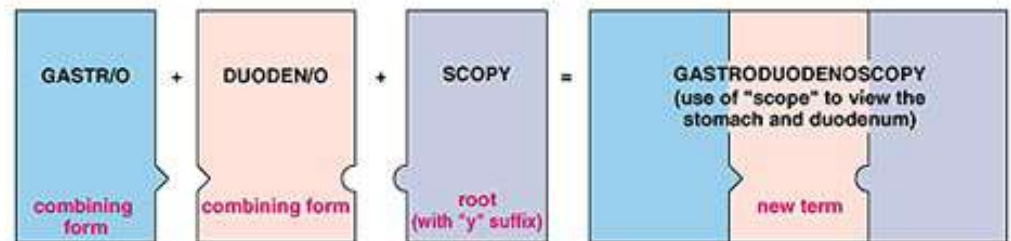
© 2009 Delmar, Cengage Learning

Combining Forms

- Created by adding a vowel (usually the letter “o”) to the end of a word root.
- Used when _____ or when the word root is joined to a _____.

- Examples:

- cardi/o = heart
- gastr/o = stomach
- neur/o = nerve



DELMAR

CENGAGE Learning

© 2009 Delmar, Cengage Learning

Suffixes

- Suffixes usually, but not always, indicate the procedure, condition, disorder, or disease.
- Examples:
 - Cardio*megaly*: _____
 - Gastr*algia*: _____
 - Neur*itis*: _____

Prefixes

- Prefixes usually, but not always, indicate location, time, number, or status.
- Examples:
 - *Peri*cardium: _____
 - *Epi*gastric: _____
 - *Poly*neuritis: _____



DELMAR

CENGAGE Learning™ © 2009 Delmar, Cengage Learning

Determining Meanings on the Basis of Word Parts



- Always start at the end of the word (suffix) and work forward.
- Separate the word parts, identify the meaning of each
- Consider the context (since some words have different meanings)
- **Decipher these medical terms based on their word parts:**
 - Cardiologist: _____
 - Gastritis: _____
 - Neuralgia: _____



DELMAR

CENGAGE Learning

© 2009 Delmar, Cengage Learning

Determining Meanings on the Basis of Word Parts

- **More Practice** — first, highlight the suffix (what does it mean?). Second, circle the root (definition??). If there is a prefix, highlight it in a different color (what does it mean?). Now add them all together and what do you get????
- Pericarditis: _____
- Hepatomegaly: _____
- Gastritis: _____
- Hyperemesis: _____



Basic Medical Terms

- A _____ is evidence of disease
- A _____ can be observed only by the patient
- A _____ is a set of signs and symptoms that occur together as part of a specific disease process.
- _____ is the identification of the disease
- _____ is a forecast or prediction of the probably course and outcome of a disorder
- An _____ disease has rapid onset and relatively short duration
- A _____ disease has a long duration and are rarely cured
- _____ is the disappearance of the symptoms of disease without having achieved a cure. Can be temporary.
- An _____ is a disease, structure, operation or procedure named for the person who discovered it

