

Chapter 7 Cell Structure and Function

Chapter Vocabulary Review

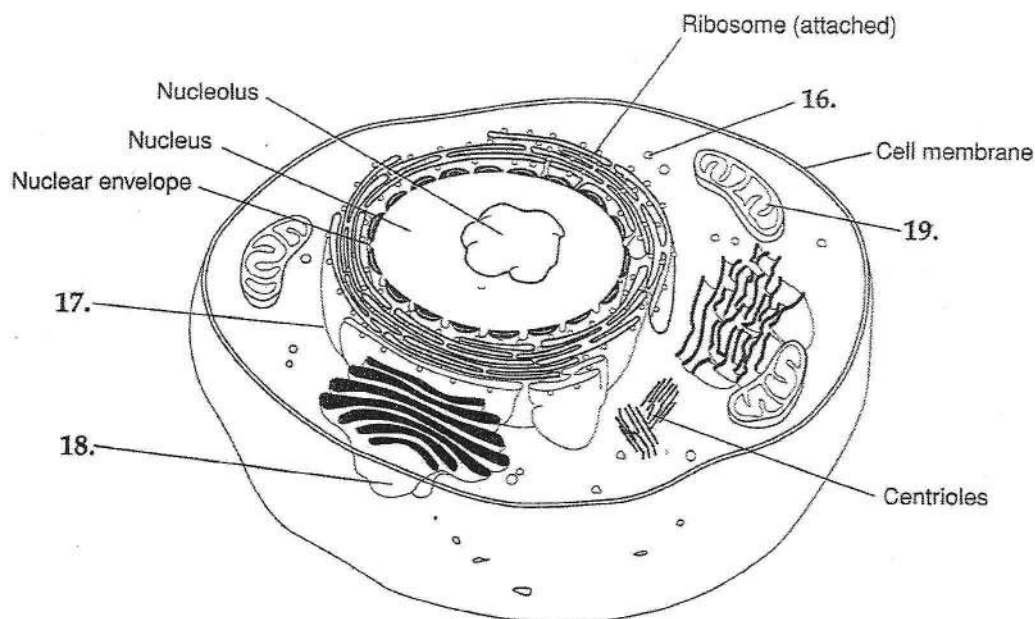
Matching *On the lines provided, match the term with its definition.*

- | | | |
|----------|------------------|---|
| <u>C</u> | 1. cell | a. organism whose cells contain a nucleus |
| <u>i</u> | 2. cell membrane | b. granular material visible within the nucleus |
| <u>f</u> | 3. cell wall | c. the basic unit of life |
| <u>h</u> | 4. nucleus | d. specialized structures within a cell that perform important cell functions |
| <u>j</u> | 5. cytoplasm | e. organism whose cells do not contain a nucleus |
| <u>e</u> | 6. prokaryote | f. strong layer around the cell membrane that protects the cell |
| <u>a</u> | 7. eukaryote | g. process by which extensions of cytoplasm engulf large particles |
| <u>d</u> | 8. organelle | h. large structure that contains the cell's genetic information |
| <u>b</u> | 9. chromatin | i. thin, double-layered sheet around the cell |
| <u>g</u> | 10. phagocytosis | j. portion of the cell outside the nucleus |

Multiple Choice *On the lines provided, write the letter that best completes the sentence or answers the question.*

- a 11. The small dense region in the nucleus where the assembly of ribosomes begins is called the
a. nucleolus. b. nuclear envelope.
c. chloroplast. d. vacuole.
- C 12. The hollow tubes of protein that help maintain the shape of the cell are called
a. microfilaments. b. mitochondrion.
c. microtubules. d. ribosomes.
- d 13. Which organelles can use energy from sunlight to create energy-rich food molecules?
a. lysosomes b. Golgi apparatus
c. vacuoles d. chloroplasts
- b 14. What is the process by which material is taken into the cell by infoldings of the cell membrane?
a. diffusion b. endocytosis
c. osmosis d. exocytosis
- C 15. The fourth, and highest, level of organization in a multicellular organism is
a. cell specialization. b. a tissue.
c. an organ system. d. an organ.

Labeling Diagrams On the lines provided, label the structures found in an animal cell that correspond with the numbers in the diagram.



16. Ribosome
17. Rough ER
18. Golgi apparatus
19. Mitochondrion

Completion On the lines provided, complete the following sentences.

20. The distinct, threadlike structures that contain the genetic information of the cell are called chromosomes.
21. Particles tend to move from an area of high concentration to an area of low concentration in a process known as diffusion.
22. When some substances can pass across them but others cannot, biological membranes are said to have selective permeability.
23. The process in which water diffuses through a selectively permeable membrane is called osmosis.
24. The process by which a protein channel allows molecules to cross the cell membrane is called facilitated diffusion.
25. The process that requires an input of energy to help material move from an area of lower concentration to an area of greater concentration is called active transport.