

Cell Unit Warm-ups

True or False

Cells are the smallest unit of life.

True or False

Cells are the smallest unit of life.

True

What structures do plant cells have that animal cells do not?

- A. Cell Wall and Nucleus
- B. Chloroplasts and Cell Wall
- C. Cell Membrane and Mitochondria
- D. Vacuoles and Nucleus

What structures do plant cells have that animal cells do not?

- A. Cell Wall and Nucleus
- B. Chloroplasts and Cell Wall
- C. Cell Membrane and Mitochondria
- D. Vacuoles and Nucleus

A specialized cell is one that has

- A. No function in an organ
- B. A general function
- C. A specific function
- D. More than one function

A specialized cell is one that has

- A. No function in an organ
- B. A general function
- C. A specific function
- D. More than one function

Which of the following organisms have specialized cells?

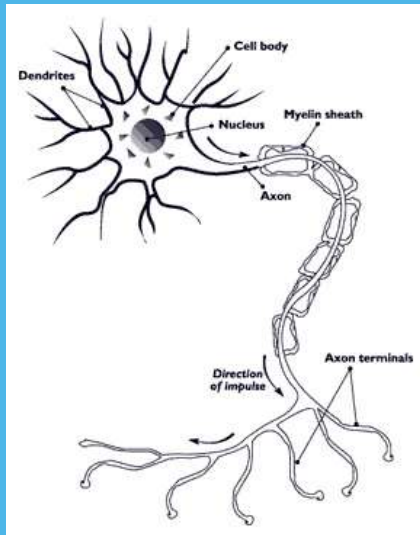
- E. Coli (bacteria)
- Rose
- Deer
- Mushroom
- Ameoba (protist)
- Ant

Which of the following organisms have specialized cells?

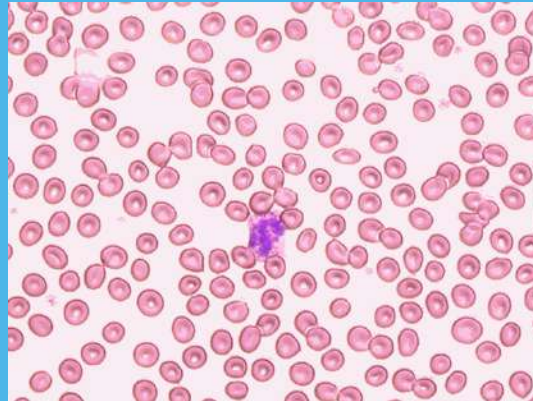
- E. Coli (bacteria)
- Rose
- Deer
- Mushroom
- Ameoba (protist)
- Ant

multicellular
organisms
have
specialized
cells!

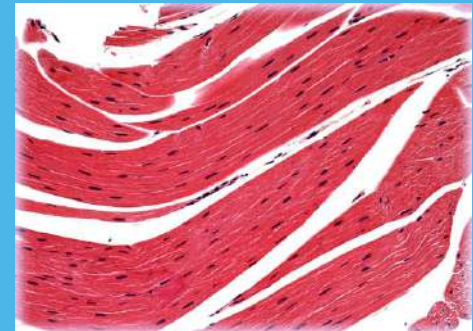
Humans have cells that are specialized. What do the following cells do for our body?



Nerve Cells

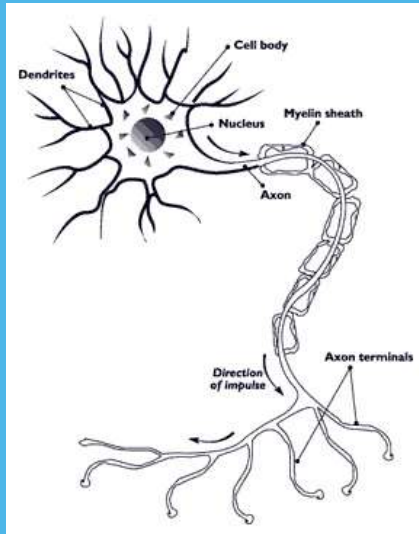


Red Blood Cells

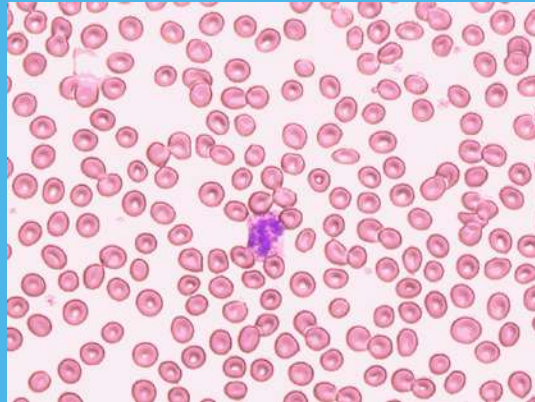


Muscle Cells

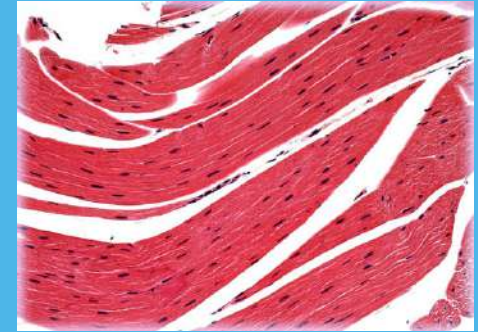
What do the following cells do for our body?



Nerve Cells:
receive and
transmit signals

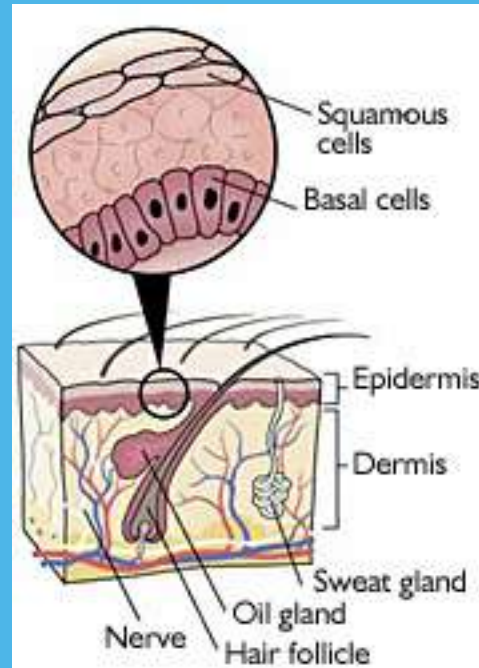


Red Blood Cells:
transport or carry
gasses



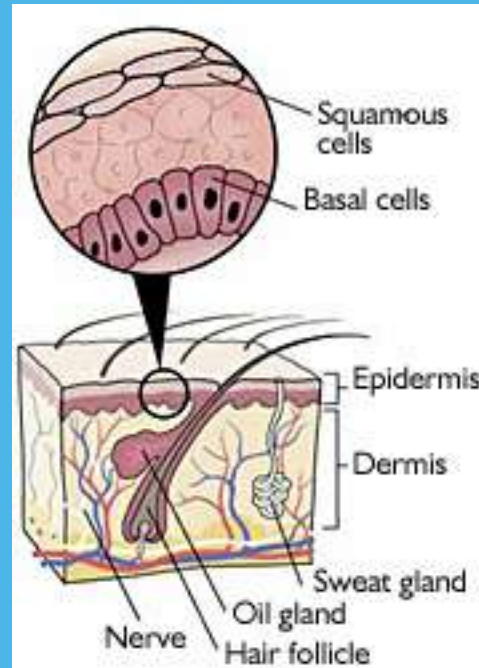
Muscle Cells:
contract and
relax

What do skin cells do for our body?



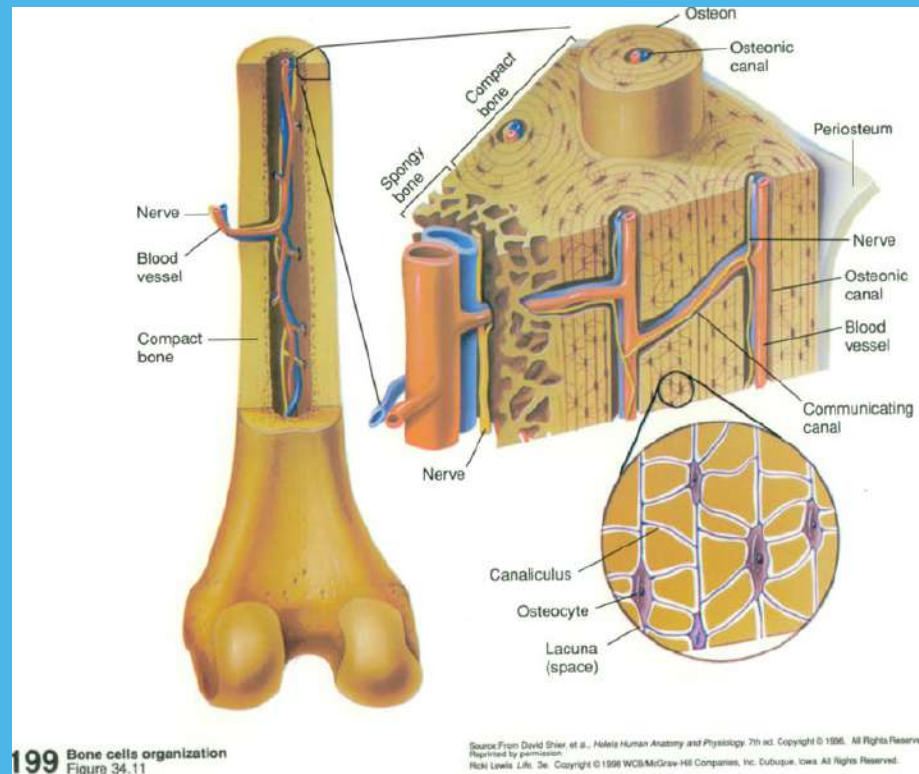
Skin Cells

What do skin cells do for our body?



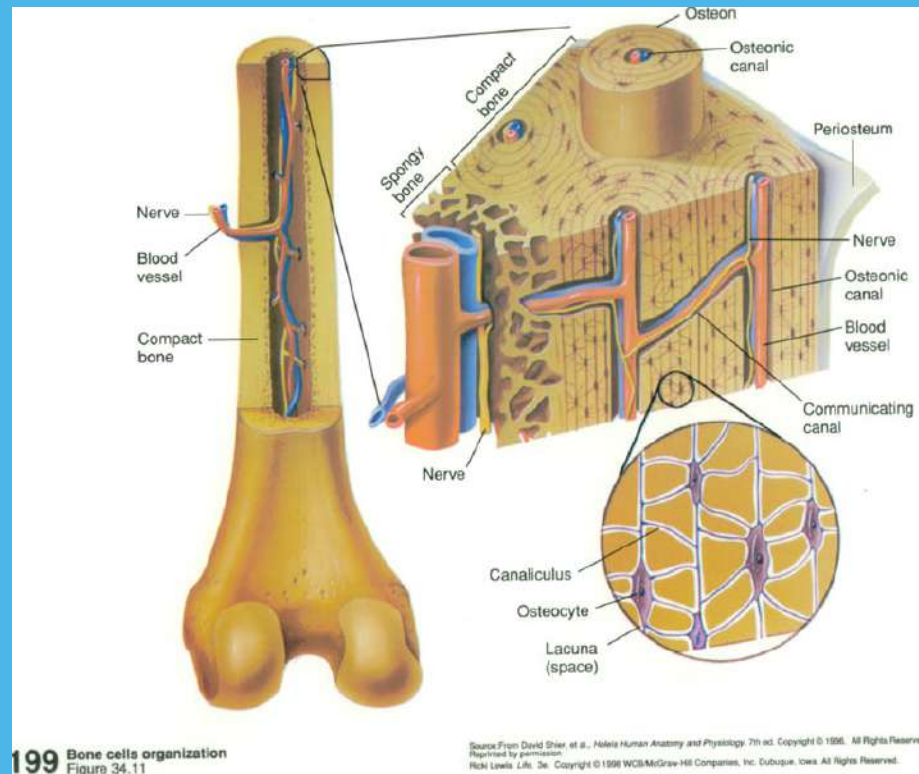
Skin Cells:
provide protection

What do bone cells do for our body?



Bone Cells:

What do bone cells do for our body?



Bone Cells:
provide support

The heart is made up of different tissues. Which level of organization does it belong to?

- A. Cell
- B. Tissue
- C. Organ
- D. Organ System

The heart is made up of different tissues. Which level of organization does it belong to?

- A. Cell
- B. Tissue
- C. Organ
- D. Organ System

Many different organs working together is a(n)

- A. Cell
- B. Tissue
- C. Organ
- D. Organ System

Many different organs working together is a(n)

- A. Cell
- B. Tissue
- C. Organ
- D. Organ System

What best describes an organism?

- A. A group of cells working together
- B. A group of tissues working together
- C. A group of systems working together
- D. A group of organs working together

What best describes an organism?

- A. A group of cells working together
- B. A group of tissues working together
- C. A group of systems working together
- D. A group of organs working together

29. Which of the following shows the organization of the body from the simplest level to the highest level?

- A. Organism, organ system, organ, tissue, cell
- B. Organ system, organism, organ, tissue
Cell
- C. Cell, tissue, organ, organ system, organisms
- D. Tissue, cell, organ, organism, organ system

Which of the following shows the organization of the body from the simplest level to the highest level?

- A. Organism, organ system, organ, tissue, cell
- B. Organ system, organism, organ, tissue
Cell
- C. Cell, tissue, organ, organ system, organisms
- D. Tissue, cell, organ, organism, organ system

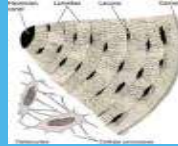
A.



B.



C.



D.



E.



1. Which picture shows an organism?

2. Which picture shows a tissue?

3. Which picture shows an organ?

4. Which picture shows a organ system?

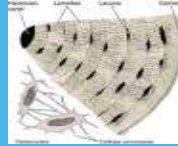
A.



B.



C.



D.



E.



1. Which picture shows an organism? **D**

2. Which picture shows a tissue? **C**

3. Which picture shows an organ? **B**

4. Which picture shows a organ system? **E**