

# Jeopardy

Abbreviations	Blood Vessels	The Heart	Diseases	Misc
<u>\$100</u>	<u>\$100</u>	<u>\$100</u>	<u>\$100</u>	<u>\$100</u>
<u>\$200</u>	<u>\$200</u>	<u>\$200</u>	<u>\$200</u>	<u>\$200</u>
<u>\$300</u>	<u>\$300</u>	<u>\$300</u>	<u>\$300</u>	<u>\$300</u>
<u>\$400</u>	<u>\$400</u>	<u>\$400</u>	<u>\$400</u>	<u>\$400</u>
<u>\$500</u>	<u>\$500</u>	<u>\$500</u>	<u>\$500</u>	<u>\$500</u>

Final Jeopardy

# 1 - \$100

- Abbrev for Blood Pressure

- BP



# 1 - \$200

- Abbrev CCU

- Cardiac Care Unit



# 1 - \$300

- What does the abbrev. EKG stand for
- electrocardiogram



# 1 - \$400

- What does the abbrev. CHF stand for?
- Congestive heart failure



# 1 - \$500

- What is the medical abbrev for a heart attack?
- MI (myocardial infraction)



# 2 - \$100

- Largest artery in the body

- aorta



# 2 - \$200

- Name the three types of blood vessels in the body
- Arteries, veins, capillaries





# 2 - \$300

■ Which blood vessel is the thickest?

■ artery



# 2 - \$400

■ In which blood vessel does exchange of oxygen and carbon dioxide take place?

■ capillaries



# 2 - \$500

- Which blood vessel carries oxygen-poor blood from the heart to the lungs
- Pulmonary vein



# 3 - \$100

- Lower chambers of the heart

- ventricles



# 3 - \$200

- Wall or portion within the heart

- septum



# 3 - \$300

- Contraction phase of the heartbeat

- systole



# 3 - \$400

- Sensitive tissue in the right atrium that begins the heartbeat
- Sinoatrial (SA) node



# 3 - \$500

- Saclike membrane surrounding the heart
- pericardium





# 4 - \$100

- Bluish coloration of the skin

- cyanosis



# 4 - \$200

- What is ischemia
- Blood is held back from an area



# 4 - \$300

- CPK and LDH are called:

- Serum enzymes



# 4 - \$400

- Rapid but regular contractions
- Fibrillation or Flutter

- flutter



# 4 - \$500

- Floating blood clot or other material

- embolus



# 5 - \$100

- Diagnostic test- sounds waves on the blood vessels

- ultrasound



# 5 - \$200

- These arteries supply blood to the head and neck

- carotid



# 5 - \$300

- An abnormal heart sound

- murmur





# 5 - \$400

- What is a sinus rhythm
- A normal heart rhythm



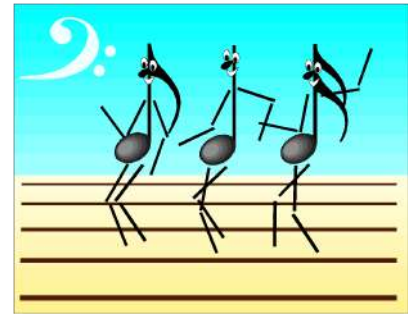
# 5 - \$500

- Define phlebotomy

- Incision of a vein



# Final Jeopardy



- Instrument used to measure BP

- sphygmomanometer

