

COLLEGE ADMISSIONS TESTING

Your Roadmap to the SAT & ACT

Brookline High School



SUMMIT
EDUCATIONAL
GROUP

Focusing on the Individual Student

ADMISSION FACTORS – HOLISTIC REVIEW

Academic

- Grades
- Strength of the curriculum
- Standardized testing scores (SAT, ACT, AP)

Non-academic

- Application essays
- Counselor & teacher recommendations
- Extracurricular activities & work experience

TEST OPTIONAL SCHOOLS

- Almost all colleges and universities have continued their test optional policies
- Some exceptions: Harvard, Cornell, Brown, Yale, Dartmouth, MIT, Georgetown, University of FL, University of GA, University of TX-Austin, military academies
- Encourage students to see the tests as a chance to show-off and have an everything to win, nothing to lose mindset

CAVEATS FOR TEST OPTIONAL

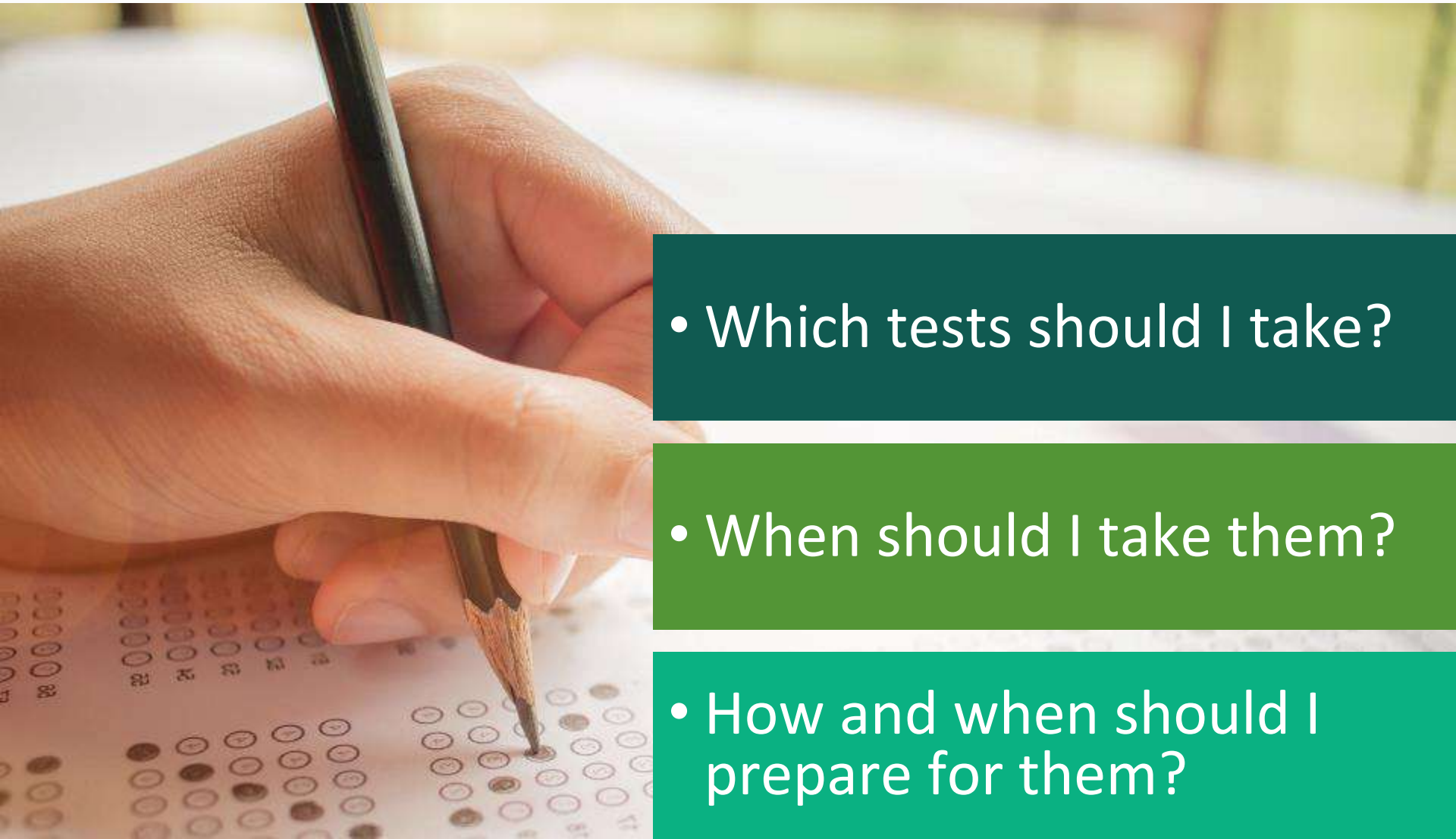
- Applying to the more selective colleges
- Recruited athletes
- Consideration for Merit Scholarship Awards

STRATEGIC SUBMISSION OF TEST SCORES

Strategic Submission now much more common.

- Pre-pandemic only about 4% of students were classified as strategic submitters
- For the 2020 admissions cycle, 24% of students chose to submit to some schools and not others

CREATE A TESTING PLAN



- Which tests should I take?

- When should I take them?

- How and when should I prepare for them?

THE NEW DIGITAL ADAPTIVE PSAT/SAT

Download Bluebook

Download requires Windows 10 or later and 250 MB of available disk space.

If you're testing with a school-managed device and you can't complete the download, reach out to someone at your school for help.

 Download for Windows

Installation Instructions

Click the download button above, then follow these instructions to install the app on your device.

- 1 Find Your Download**
Open your Downloads folder and double-click on Bluebook Setup 0.9.111.exe. This will create a shortcut to the app on your desktop.
- 2 Open the App**
From your desktop, double-click the shortcut (the star icon) to open the app.
- 3 Confirm**
If you see a message asking if you're sure you want to open the app, click **Open**.
- 4 Log In**
When the app opens, log in.
- 5 Success!**
The app is successfully installed on your device. You can close the window.

LOOK AND FEEL OF THE DIGITAL PSAT/SAT

Bluebook

Section 1, Module 1: Reading and Writing

Directions ▼

31:59

Hide



Annotate



More

Grafting is a horticultural technique in which tissue from two different plants (such as two apple trees) are joined so they grow together into one plant. The joining of plants' upper halves, called scions, to other plants' lower halves, called rootstocks, _____ traits from different cultivars to be combined.

1

Mark for Review



Which choice completes the text so that it conforms to the conventions of Standard English?

A

allow

B

allows

C

allowing

D

to allow

Student Name

Question 1 of 27 ^

Back

Next

LOOK AND FEEL OF THE DIGITAL PSAT/SAT

Bluebook

Section 2, Module 1: Math

Directions V

31:59

Hide



Calculator



Reference



More

1



Mark for Review



Which expression is equivalent to $x^2 + 5x - 50$?

(A)

$$(x - 25)(x + 2)$$

(B)

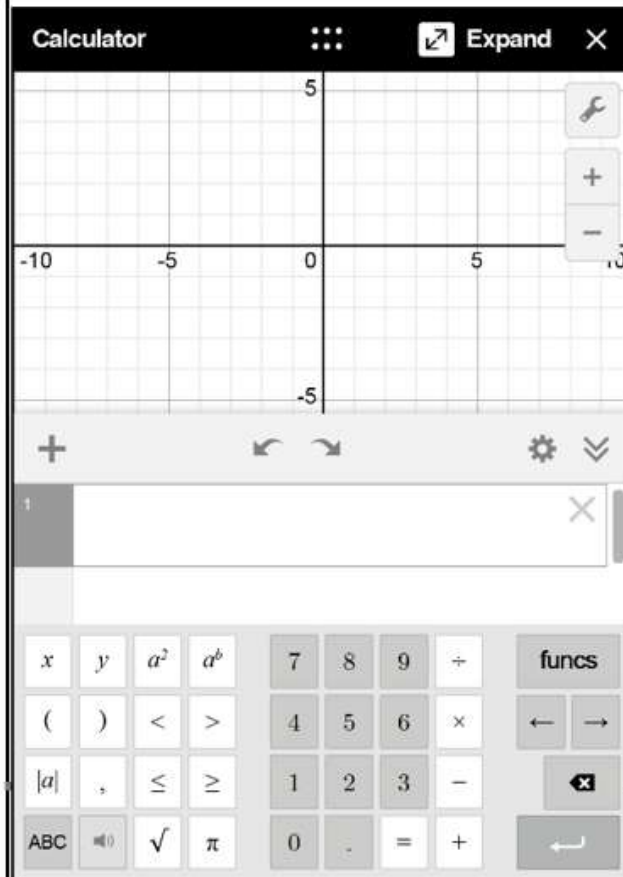
$$(x - 10)(x + 5)$$

(C)

$$(x - 5)(x + 10)$$

(D)

$$(x - 2)(x + 25)$$



Question 1 of 22 ^

Back

Next

PSAT IS PRACTICE FOR THE SAT

SAT (200-800)

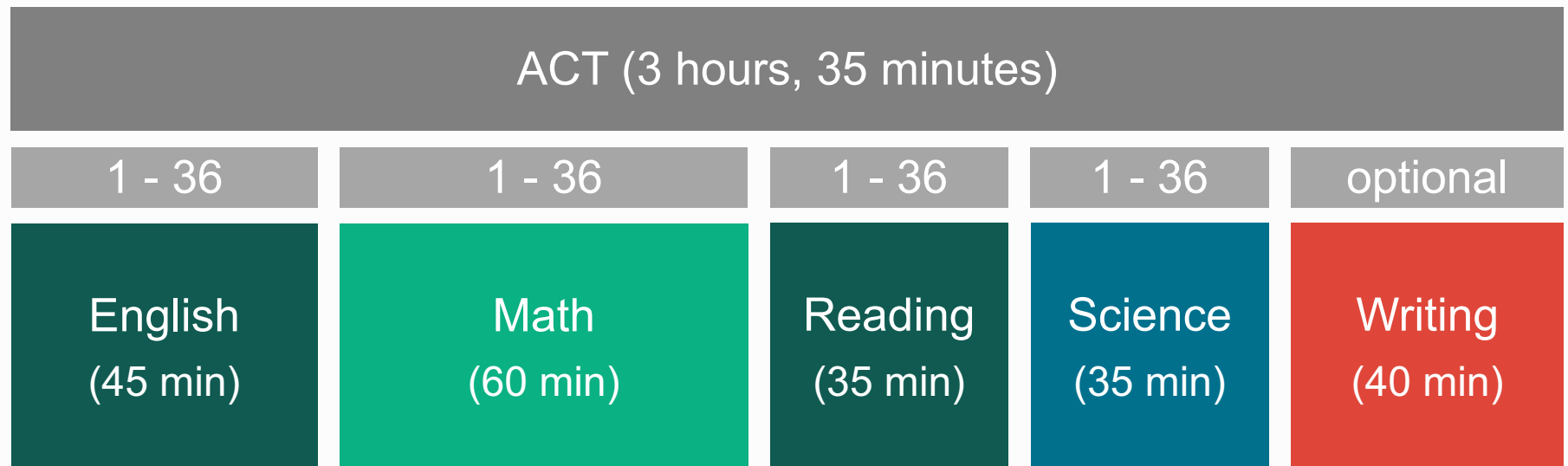
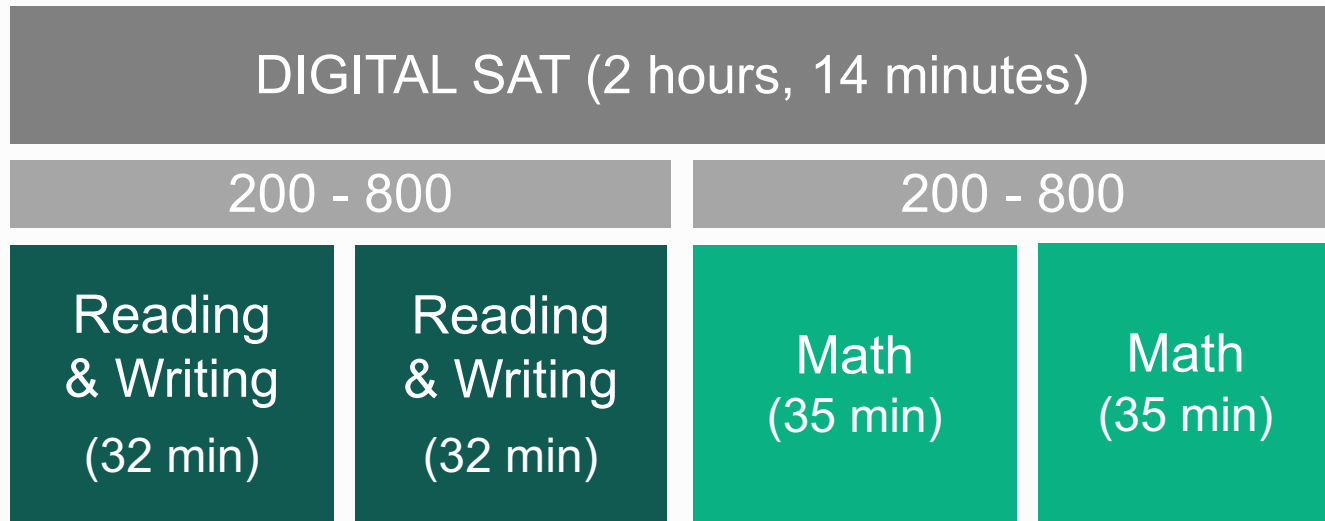
PSAT 10, PSAT/NMSQT (160-760)

PSAT 8/9 (120-720)



PSAT scores show what you would have scored on the SAT on that same day.

ACT STRUCTURE / DIGITAL SAT STRUCTURE



SAT & ACT TIMING PER QUESTION

SAT Reading & Writing
71 seconds

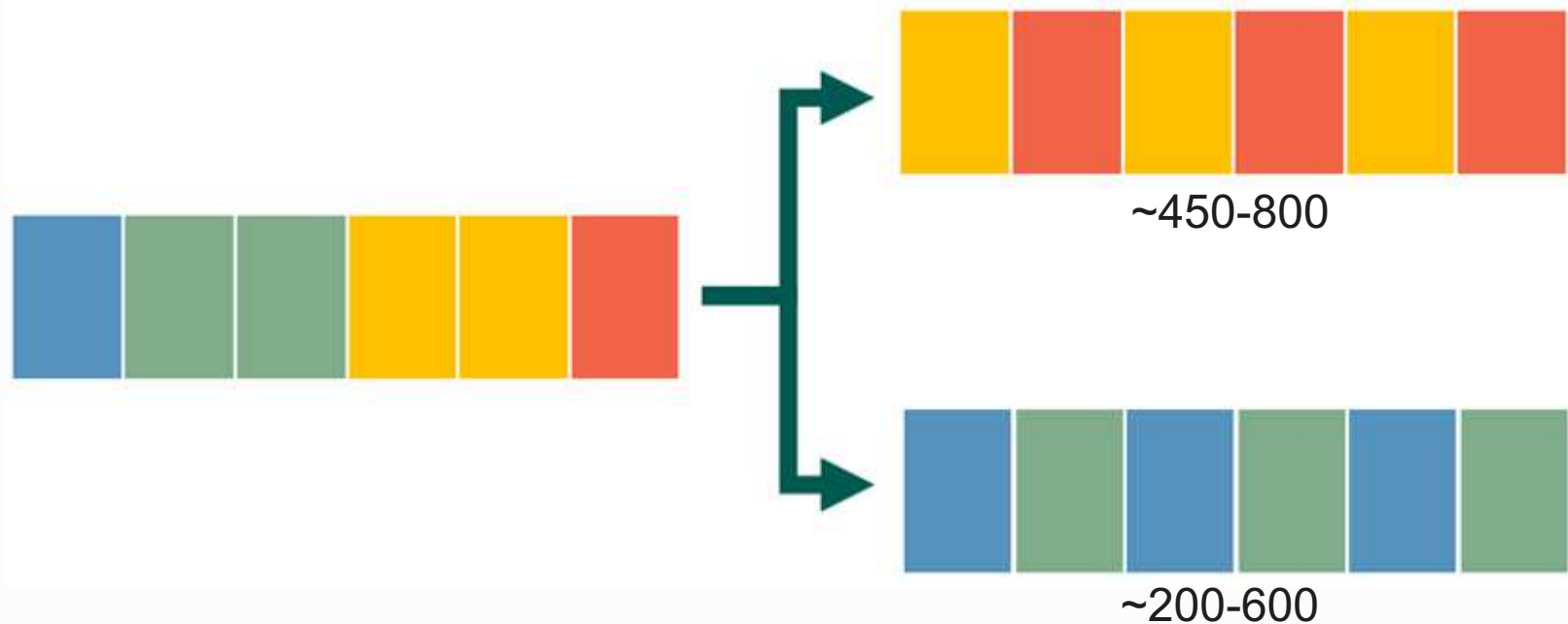
SAT Math
95 seconds

ACT English
36 seconds

ACT Reading
52 seconds

ACT Math
60 seconds

DIGITAL ADAPTIVE SAT STRUCTURE



Don't worry about it.

DIGITAL SAT - READING & WRITING

SAT Writing tests more transitions, commas, and verb tense.

First built in the 1930s, the Moscow Metro's underground stations were designed to reflect the idealized future conceived by Joseph Stalin. Elaborate murals depict the hard-working proletariat, while the light from opulent chandeliers reflecting off the high, marble walls symbolize the radiant future promised to the Soviet _____. Moscow has evolved, so too has the architecture of its revered metro system: 21st century stations are designed using more modern styles.

Which choice completes the text so that it conforms to the conventions of Standard English?

- A) public, however, as
- B) public, however; as
- C) public; however, as
- D) public; however. As

ACT English has longer passages and a wider variety of questions.

the place of utensils, providing a vessel for delivering food to
the mouth. Due to the fermentation process, it has a tangy,
sourdough taste that complements the spices found in many
sauces and stews in Ethiopian cooking.

Injera is made from teff, being a tiny grain similar in size
to poppy seeds, less than 1 millimeter in diameter. Native to

Ethiopia, recognizing teff as a highly nutritious grain. It can
vary in color, ranging from pale white to yellow to deep
brown. Those who can afford the expense will pay more for
the pure white variety, known as manga, then other varieties.

Many will buy the less expensive red or mixed varieties or

1. B. having taken
C. it takes
D. takes

2. F. NO CHANGE
G. teff, being a
H. teff. A
J. teff, a

3. A. NO CHANGE
B. recognized teff
C. one recognizes teff
D. teff is recognized

4. F. NO CHANGE
G. than other varieties
H. then do other varieties

DIGITAL SAT - READING & WRITING

SAT Reading tests more vocabulary and rhetorical analysis.

The following text is from Charlotte Brontë's 1857 novel *The Professor*.

I re-entered the town a hungry man; the dinner I had forgotten recurred seductively to my recollection; and it was with a quick step and sharp appetite I ascended the narrow street leading to my lodgings. It was dark when I opened the front door and walked into the house.

As used in the text, what does the word “sharp” most nearly mean?

- A) hurtful
- B) shrill
- C) acute
- D) rapid

ACT READING

NATURAL SCIENCE: This passage is adapted from the article "The Jaws That Jump" by Adam Summers (©2006 by Natural History Magazine, Inc.).

Recently I was reminded of just how powerful ants can be when inflicting damage on intruders. A team of biomechanists has studied the incredibly speedy bite of a group of Central and South American ants. The team
5 clocked the bite as the fastest on the planet—and discovered that it also gives the ants the unique ability to jump with their jaws, adding to an impressive array of already known defenses.

Trap-jaw ants nest in leaf litter, rather than underground or in mounds. There they often feed on well-armored and elusive prey, including other species of ants. As they stalk their dinner, the trap-jaws hold their mandibles wide apart, often cocked open at 180 degrees or more by a latch mechanism. When minute trigger
15 hairs on the inner edge of the mandible come in contact with something, the jaws snap shut at speeds now known to reach 145 miles per hour. No passerby could outrace that. The astoundingly high speed gives the jaws, despite their light weight, enough force to crack
20 open the armor of most prey and get at the tasty meat inside.

The key to the jaws' speed (and their even more amazing acceleration) is that the release comes from stored energy produced by the strong but slow muscles
25 of the jaw. Think how an archer slowly draws an arrow in a bowstring against the flex of a bow: nearly all the energy from the archer's muscles pours into the flexing of the bow. When released, the energy stored in the bow wings the arrow toward its target much faster than the
30 archer could by throwing the arrow like a javelin. The biomechanics of energy storage is the domain of Sheila

The passage points to which of the following as a characteristic of trap-jaw ants' mandibles that prevents the ants from harming themselves with their powerful bite?

- A) A hinge prevents the mandibles from snapping together forcefully.
- B) Mandibles with cushioned inner edges provide a buffer when the mandibles snap shut.
- C) A latch mechanism prevents the mandibles from closing completely.
- D) The mandibles begin to decelerate before they meet

Digital SAT MATH/ACT MATH

dSAT

The graph of the linear function f has intercepts at $(a, 0)$ and $(0, b)$ in the xy -plane. If $a + b = 0$ and $a \neq b$, which of the following is true about the slope of the graph of f ?

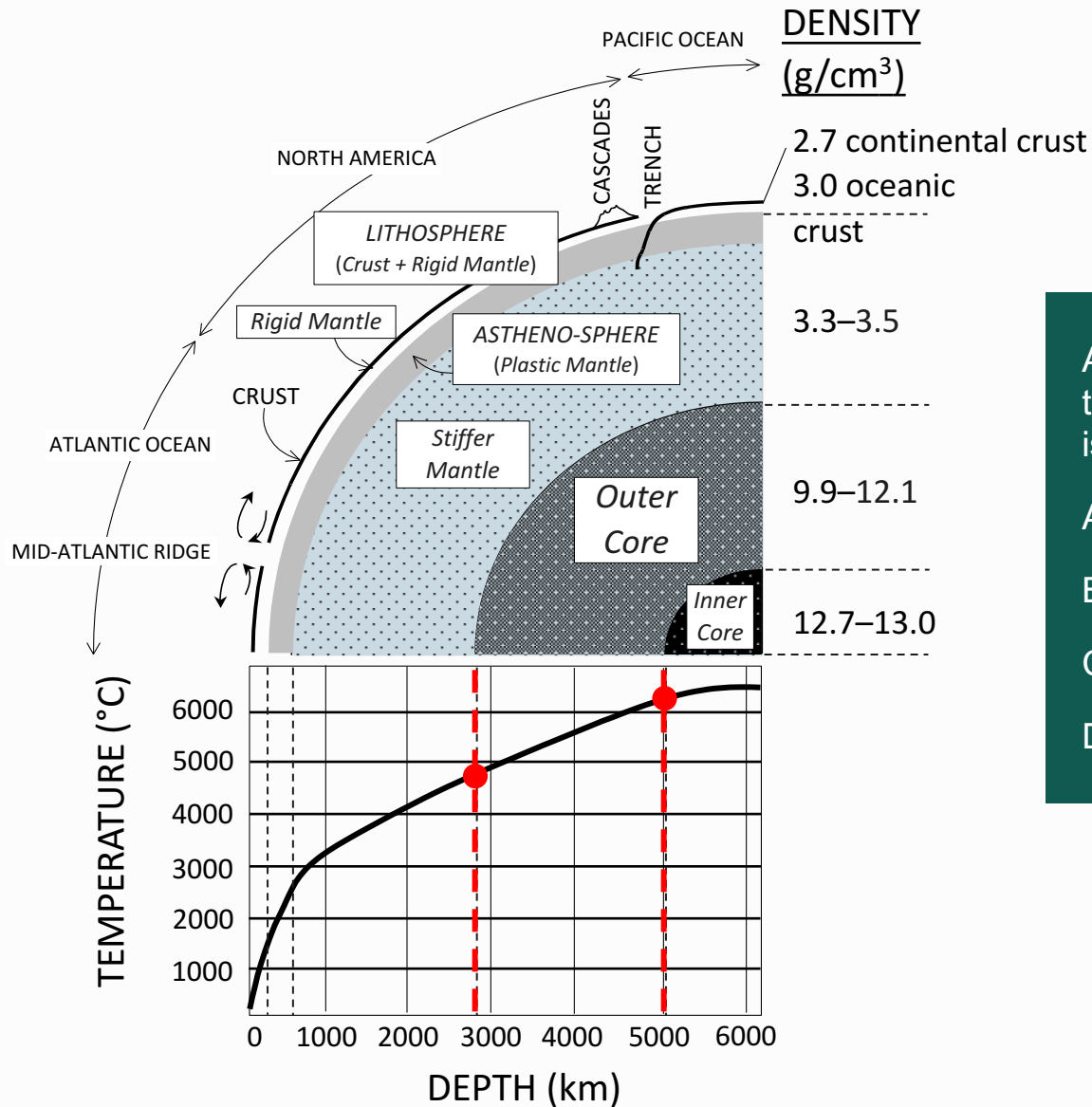
- A) It is positive.
- B) It is negative.
- C) It equals zero.
- D) It is undefined.

ACT

If two lines in the standard (x, y) coordinate plane are perpendicular and the slope of one of the lines is 3, what is the slope of the other line?

- A. -3
- B. -1
- C. $-1/3$
- D. $1/3$
- E. 3

ACT SCIENCE



According to Figure 1, the temperature of the Outer Core is approximately between:

- A. 1000° C and 2500° C
- B. 2500° C and 5000° C
- C. 4800° C and 6300° C
- D. 6200° C and 6500° C

COMPARING THE SAT AND ACT

SAT Questions

- More challenging
- Require deep understanding
- Narrower focus of skills
- More time per question

ACT Questions

- Straightforward
- Require instant recognition
- Broader scope of skills
- Require constant, rapid pace

CHOOSING SAT or ACT

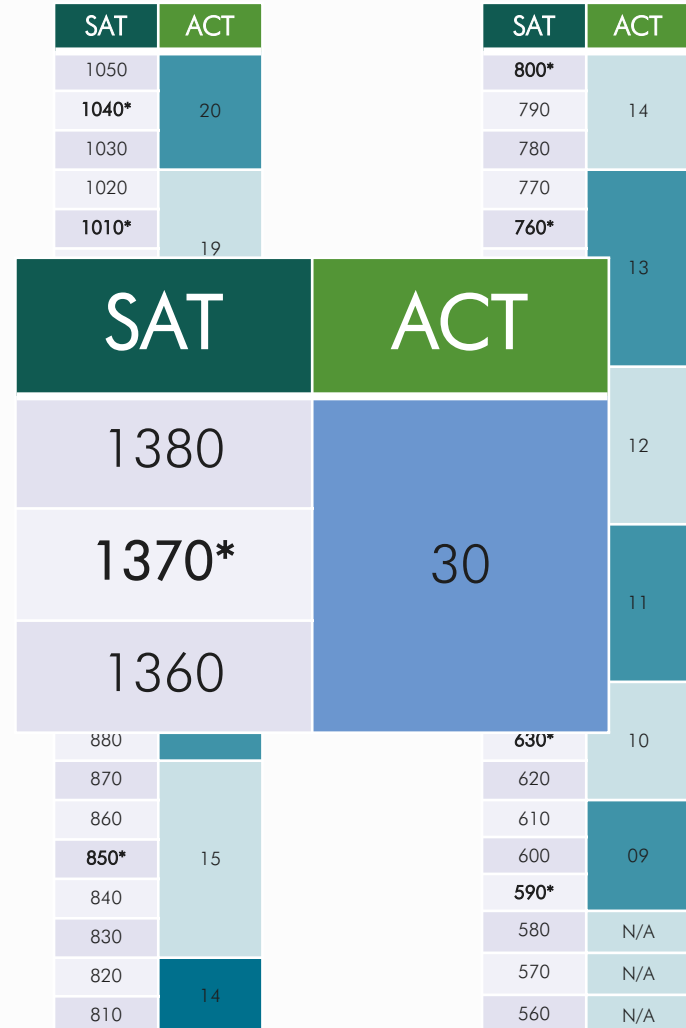
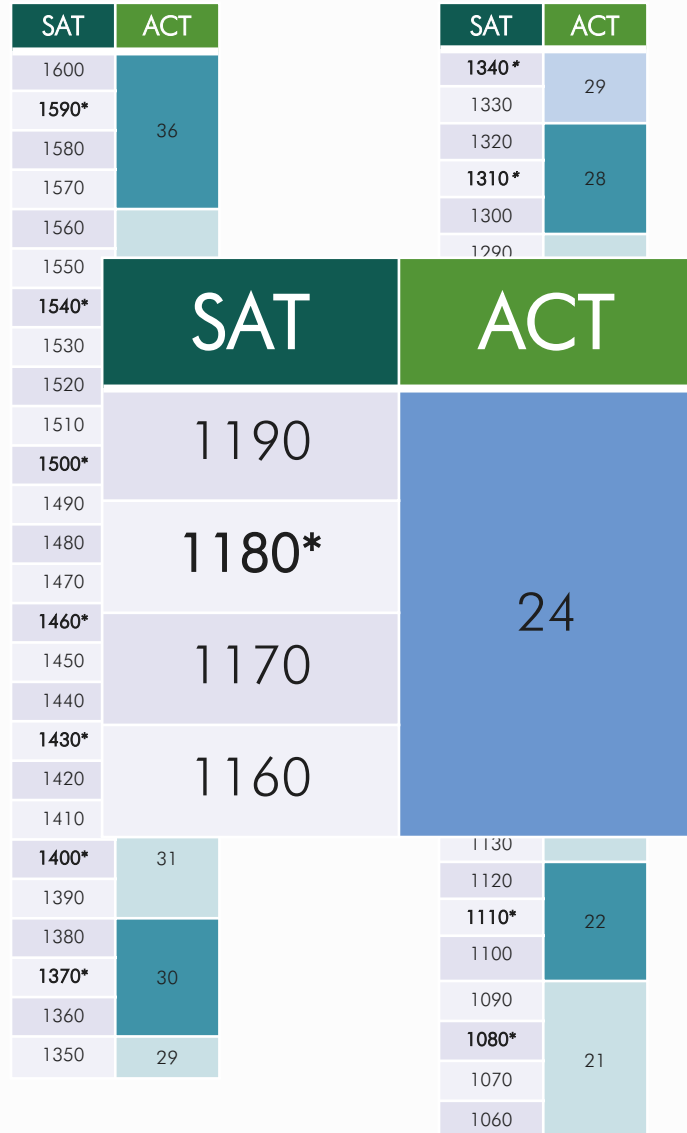


We were originally thinking **SAT**, but then Noah's admissions advisor told us left-handed students born on Tuesdays do better on the **ACT**.

CHOOSING SAT or ACT

The best way to make this decision is by taking each one and comparing scores using a Concordance Table.

CONCORDANCE TABLES



CHANGES TO THE ACT



The ACT Test Is Evolving

ACT

July 15, 2024

CHANGES TO THE ACT

- Coming April 2025 to the digital format only
- Shorter test and more time/question and science will be optional but digital administration of the test only.
- Changes to the paper test coming September 2025
- Our recommendations for juniors:
 - Focus on the current paper and pencil version of the test for your spring of junior year
 - We think test availability of the new test will be very limited
 - Have not heard from colleges yet about their response to these changes

CREATE A TESTING PLAN

A close-up photograph of a person's hand holding a dark pencil, poised to write on an open book. The book's pages are filled with printed text. The background is blurred, showing what appears to be a classroom or study environment with other people.

When should I take them?

THE TESTS



SAMPLE TESTING PLAN

Practice
ACT &
digital SAT

Digital
PSAT

SAT

AP

SAT

SAT

MAY JUN JUL AUG SEP OCT NOV DEC JAN FEB MAR APR MAY JUN JUL AUG SEP OCT

TEST PREPARATION

AP PREP

REVIEW

SAMPLE TESTING PLAN

Practice
ACT &
digital SAT

digital
PSAT

ACT

AP

ACT

NEW
ACT

MAY JUN JUL AUG SEP OCT NOV DEC JAN FEB MAR APR MAY JUN JUL AUG SEP OCT

TEST PREPARATION

REVIEW

SUPERSCORING – SAT

March	
Reading & Writing	Math
580	570
1150	

May	
Reading & Writing	Math
580	650
1230	

August	
Reading & Writing	Math
640	620
1260	

Superscore	
Reading & Writing	Math
1290	

SUPERSCORING – ACT

	FEB	JUNE	SEPT	SUPERSCORE
ENGLISH	28	32	30	
MATH	27	28	30	
READING	33	29	28	
SCIENCE	27	30	28	
COMPOSITE	29	30	29	31

CREATE A TESTING PLAN

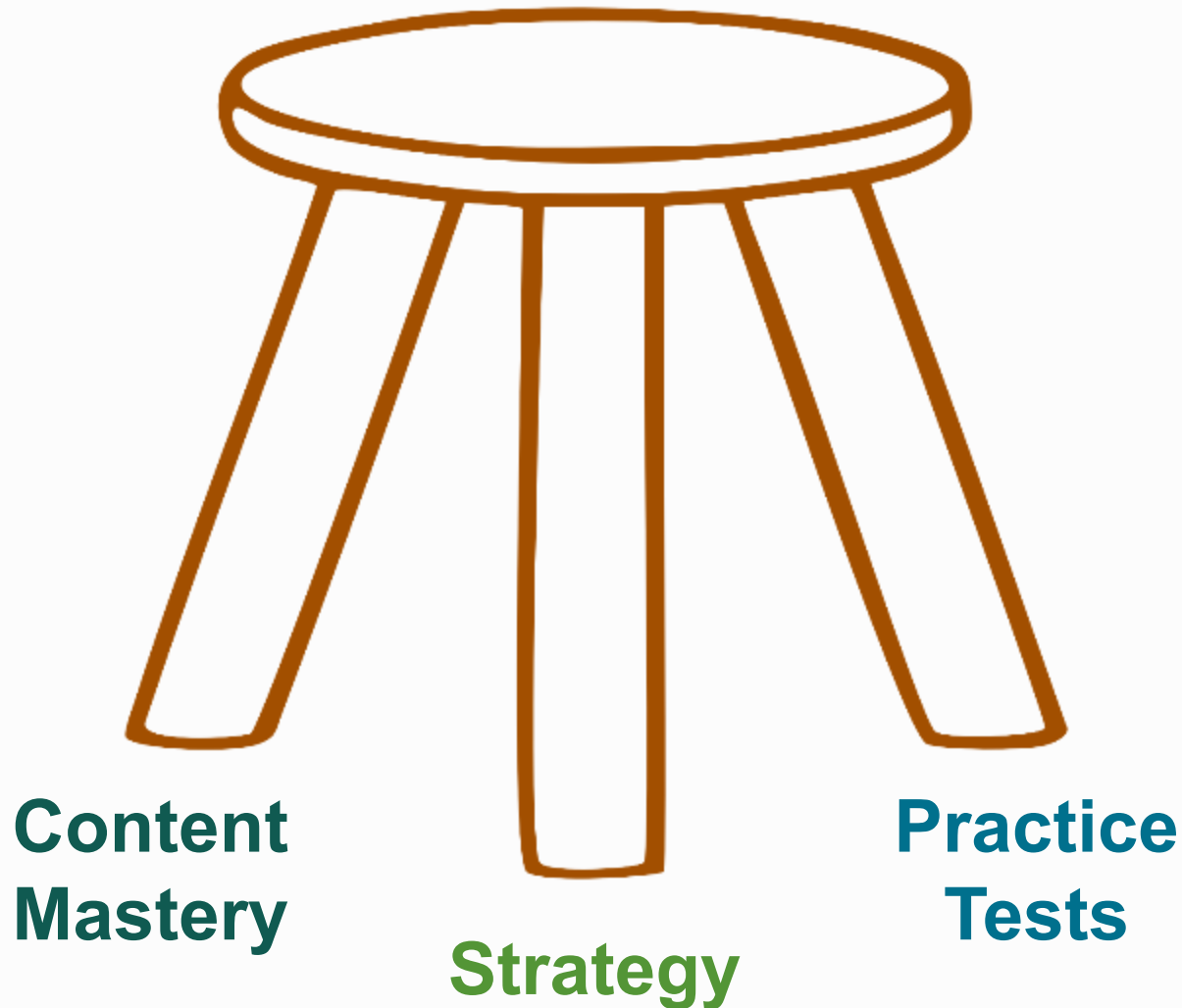
A close-up photograph of a person's hand holding a dark pencil, poised to write on an open book. The book's pages are filled with printed text. The background is blurred, showing what appears to be a classroom or study environment with other people.

How and when should I prepare for them?

CHOOSE A START DATE

Test prep should **allow** for at least 6-15 weeks of study and practice before the official test date.

ELEMENTS OF TEST PREPARATION



GUIDING PRINCIPLES

Encourage students to view the test with an 'everything to gain, nothing to lose' mindset.

A good testing plan prioritizes school work over test prep. Testing early and often is generally not sensible.

Take a practice SAT and ACT for a baseline score and also to choose a path.

Many schools on your final list will be test optional. You can decide which schools you submit scores to and which ones you do not.

LAST, BUT NOT LEAST

Maintain perspective.
It's just a test.



info@mytutor.com

SUMMIT EDUCATIONAL GROUP

Grades 4-12 Test Preparation and Academic Support

- One-on-One, In-Home and Online Test Prep and Academic and AP Tutoring
- Practice SAT and ACT tests
- One-on-One Writing and Advanced Math Courses

(800) MY TUTOR MYTUTOR.COM

