

Card in a Box

Art Standard: AESTHETIC VALUING Responding to, Analyzing, and Making Judgments About Works in the Visual Arts

Skills, Processes, Materials, and Tools: Derive Meaning: 4.1 Describe the relationship involving the art maker (artist), the making (process), the artwork (product), and the viewer.

Objective: The student will apply the Elements of Arts using the elements of engineering design processes to create a pop-up card-in-a box design.

Criteria: To make a pop-up card-in-a box design using a variety of materials, shapes, textures, and color.

History: Have you ever read a pop-up book? How do they work? When were they invented? The first movable books were created for education during the 1500's. One of the first books was an anatomy book. It used flaps for each layer of the human body. It was created in 1553 by Andreas Vesalius. People start creating movable books for recreational purposes hundreds of years later. Engineers & artists think about forces when designing/building. When we read pop-up books, we apply very small forces (pushes or pulls) to tabs and flaps to make them move.

Materials: Heavyweight paper, card stock, or cardboard; Glue stick, white glue, or tape; Scissors; Die-cuts, stickers, construction paper, misc. craft items

Step 1: Begin by cutting template pieces from chosen paper, cardstock, or cardboard.

Step 2: Fold the sides of the box card

Step 3: Adhere the tab to the inside of the card to create the box card shape

Step 4: To create the gift card pocket insert, begin by folding in the side tabs and add adhesive. Fold up the gift card pocket flap. Fold the side tabs in opposite direction.

Step 5: Add glue to the tabs, on the side where it will adhere to the inside of the box.

Step 6: Insert gift card pocket into the box card, the right-side tab should adhere to the front of the right side of the box. The left side tab should adhere to the center of the left side of the box.

Step 7: Fold the side tabs of the other insert in the same manner as the gift card pocket. Insert into the box in a similar manner, however, the left side tabs should line up with the back of the box and the right -side tabs should be placed in the center of the box.

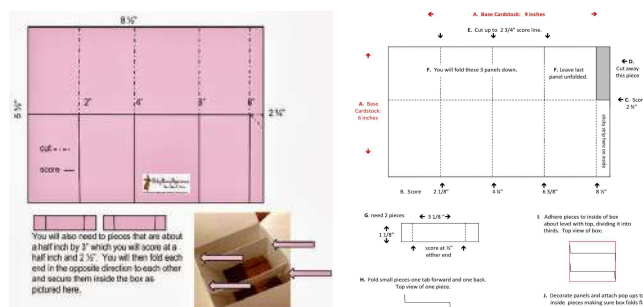


Step 8: Fold the box closed & check that tabs are in the proper place, adjust as necessary. Open up the box & place the paper accents on the flaps of the box.

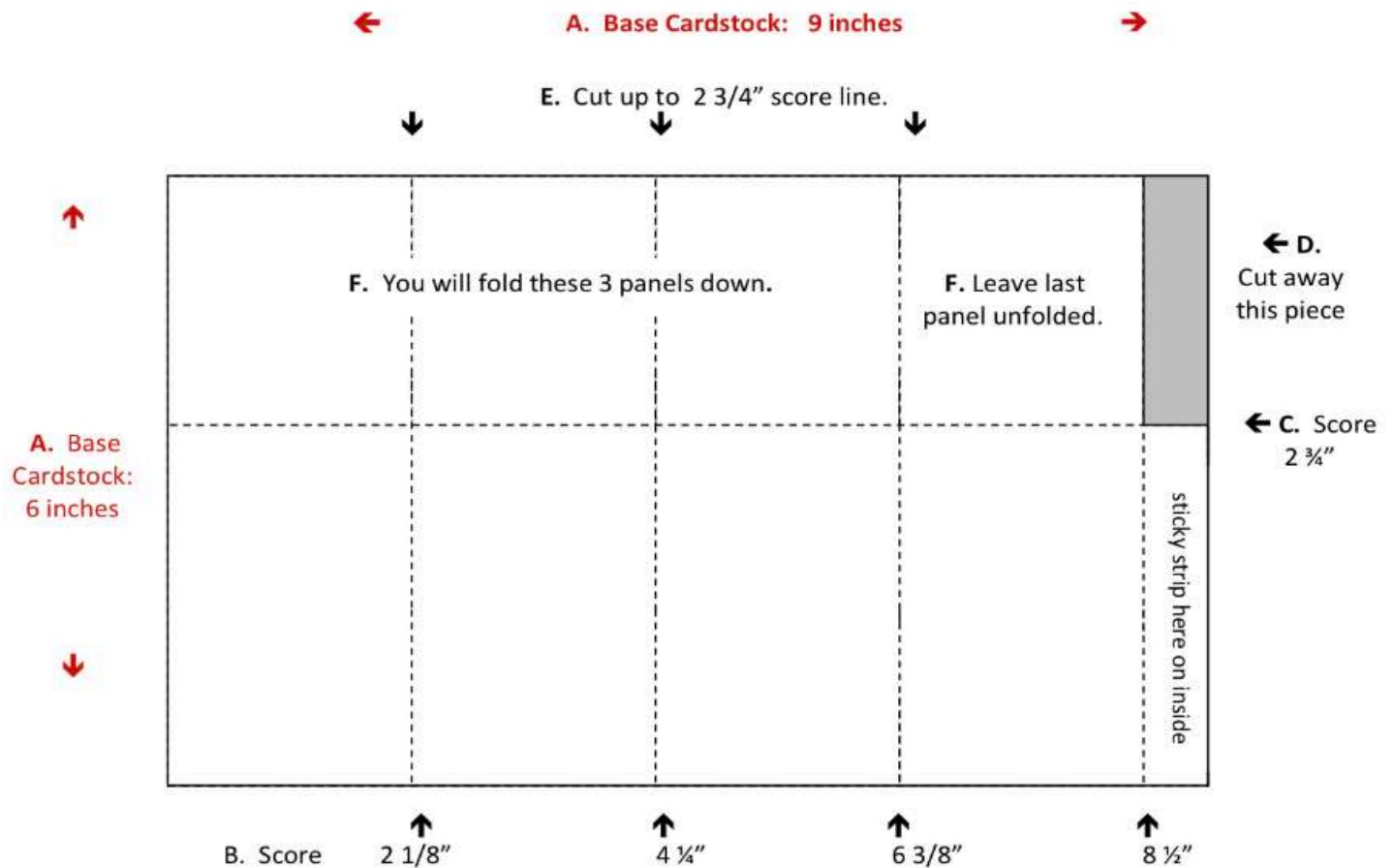
Step 9: Assemble the any accents, placing them on desired pieces. You can overhang on the sides. Be sure that the card is able to close.

Step 10: Attach the bottom edge of the desired pieces to the back of the inserts, placing the taller pieces at the back insert and the shorter ones at front. Add any additional accents or pieces. Adjust to fit, making sure accents don't go beyond the box card edges or the card won't fit in the envelope

Step 11: Burst accents on the outside of the box where desired. Simply write a greeting wherever you wish.



Card in a Box Template



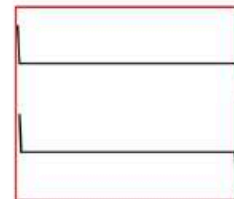
G. need 2 pieces



H. Fold small pieces-one tab forward and one back.
Top view of one piece.



I. Adhere pieces to inside of box about level with top, dividing it into thirds. Top view of box:



J. Decorate panels and attach pop ups to inside pieces making sure box folds flat.

Card in a Box Tutorial

Steampunk Card-In-A-Box Tutorial

<https://youtu.be/kZpXx11WqHw>

Box Cards SVG Kit - Assembly Tutorial

<https://youtu.be/zvXmjN9qlyE>

DIY Pop-Up Box Card - Tutorial / DIY Cards

<https://youtu.be/MxNPKxNXCW0>

How to Make a Pop-Up Box Card | Craft Techniques?

<https://youtu.be/t7mbhzacx4U>

