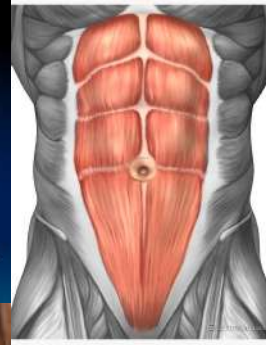
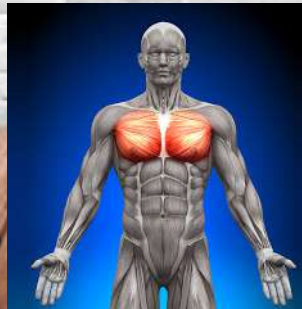
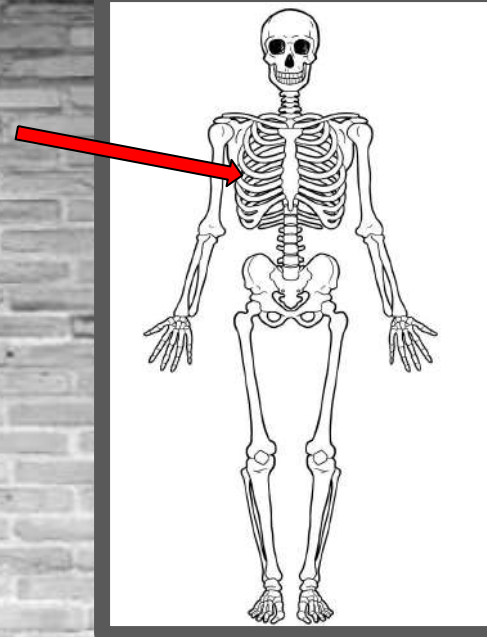
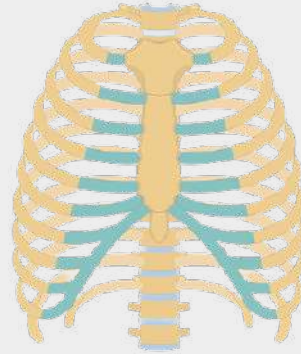


Skeletal system



Bone of the Week:

Ribs



Muscles near the Ribs:

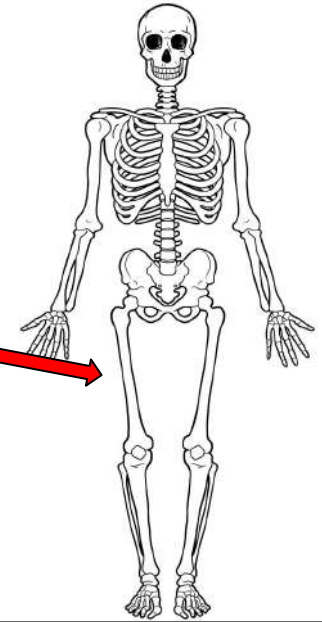
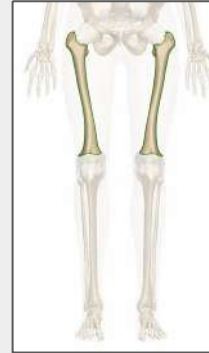
- Pectoral
- Abdominal

Skeletal system

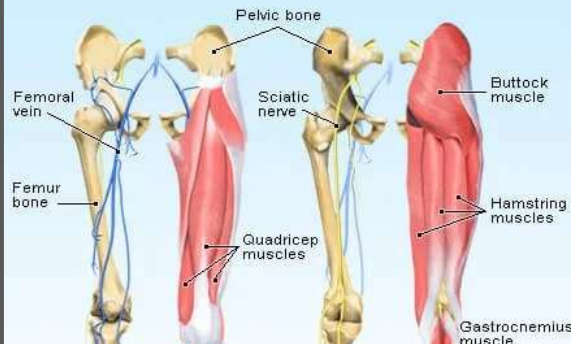


Bone of the Week:

Femur



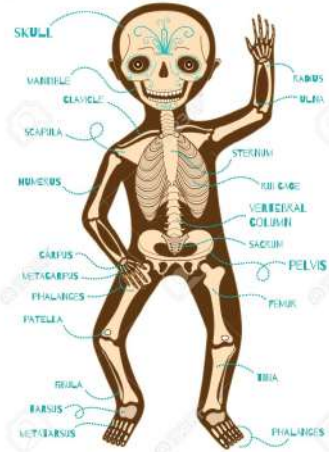
Anatomy of the Legs



Muscles surrounding the Femur:

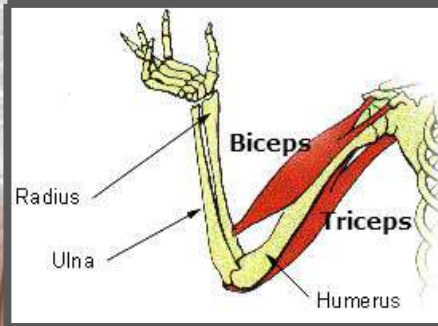
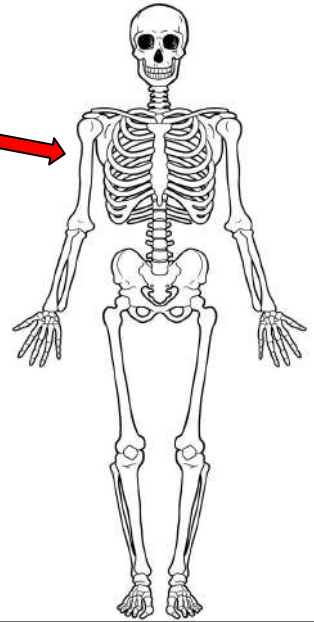
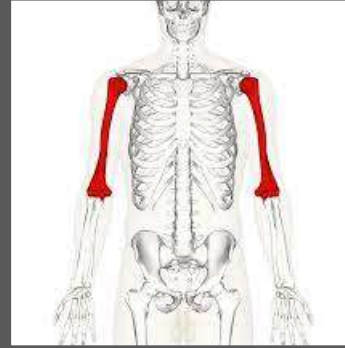
Hamstring and Quadricep

Skeletal system



Bone of the Week:

Humerus



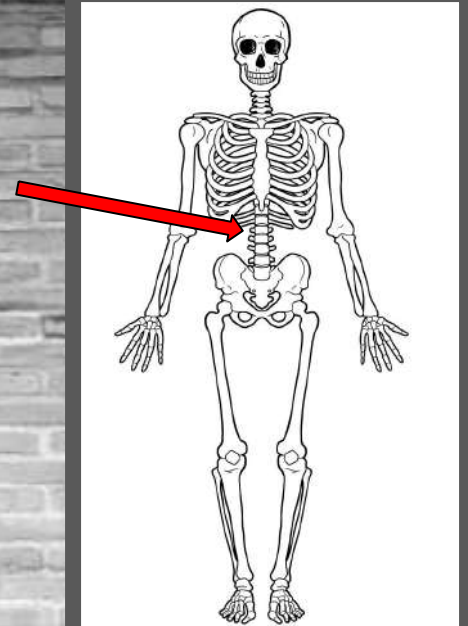
Muscles surrounding the
Humerus:
Bicep and Tricep

Skeletal system



Bone of the Week:

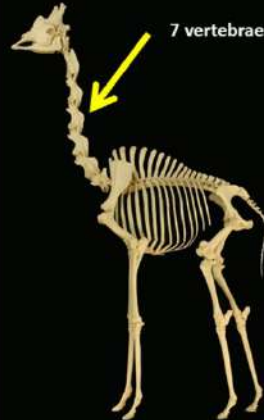
Spine



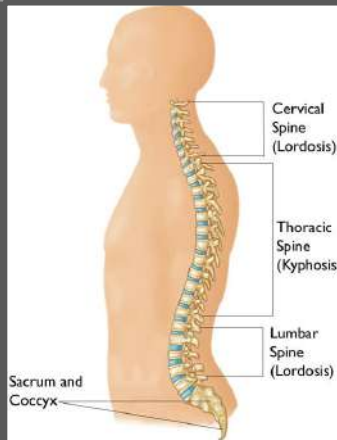
Skeleton: Giraffes vs Humans



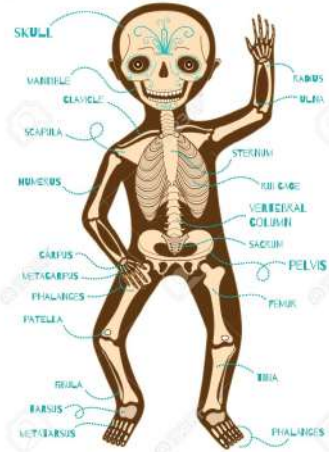
Humans and giraffes have the same number of bones in their necks.



Giraffe's vertebrae are just bigger!



Skeletal system



Bone of the Week:

Coccyx (tailbone)

Tailbone

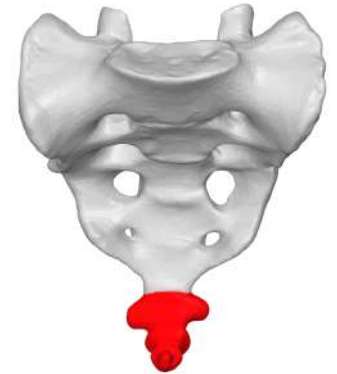


Cervical
Spine
(Lordosis)

Thoracic
Spine
(Kyphosis)

Lumbar
Spine
(Lordosis)

Coccyx

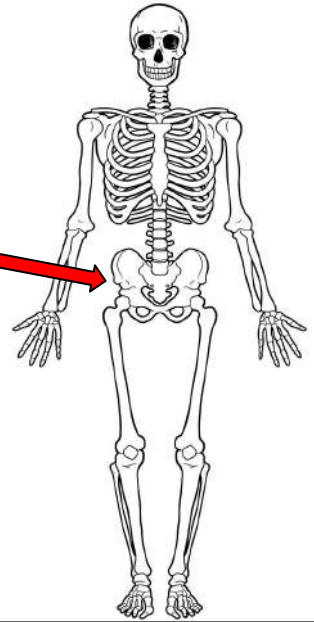


Skeletal system



Bone of the Week:

Pelvis

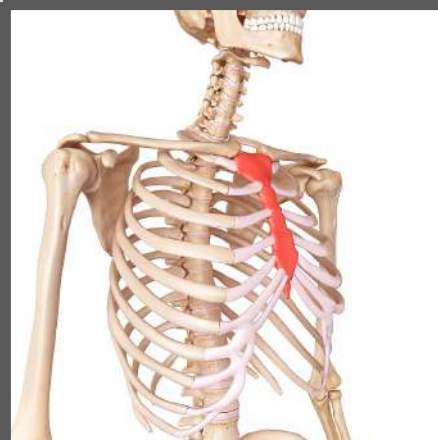
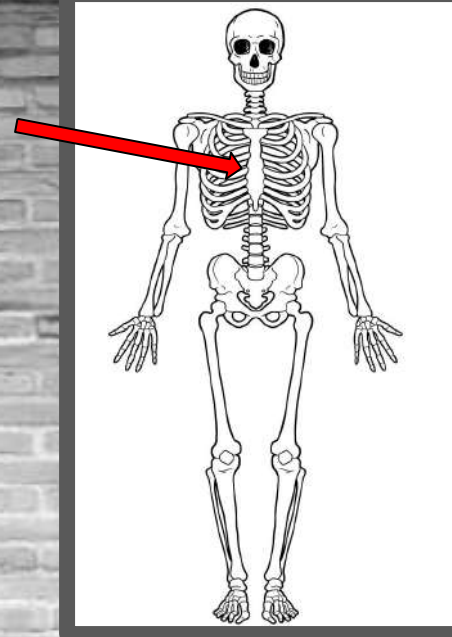
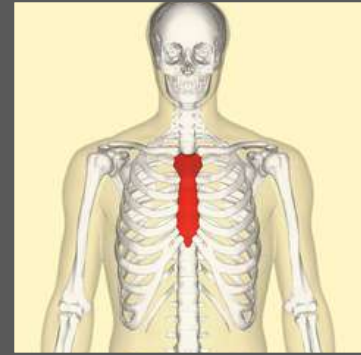


Bones around the Pelvis area:
Coccyx & Femur

Skeletal system



Bone of the Week: Sternum



Bones around the Sternum area:
Rib Cage