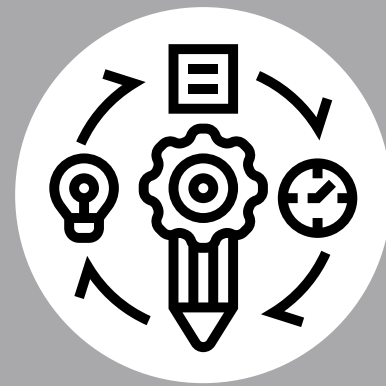


WHAT WE HAVE DONE SINCE THE LAST BOND REFERENDUM



Engaged Stakeholders

We have met with parents, students, staff, and community members to develop solutions.



Southwest Area CTE

DPS worked with state and community partners to create a state-of-the-art CTE Center without raising taxes.



Partnerships with DSU & Community

Utilized DSU, Virtual learning, CTE, School to Work, and the middle school to help with space constraints at high school.



Reconfigured Plan

Created a \$69M plan to meet the needs of aging systems and growing enrollment.



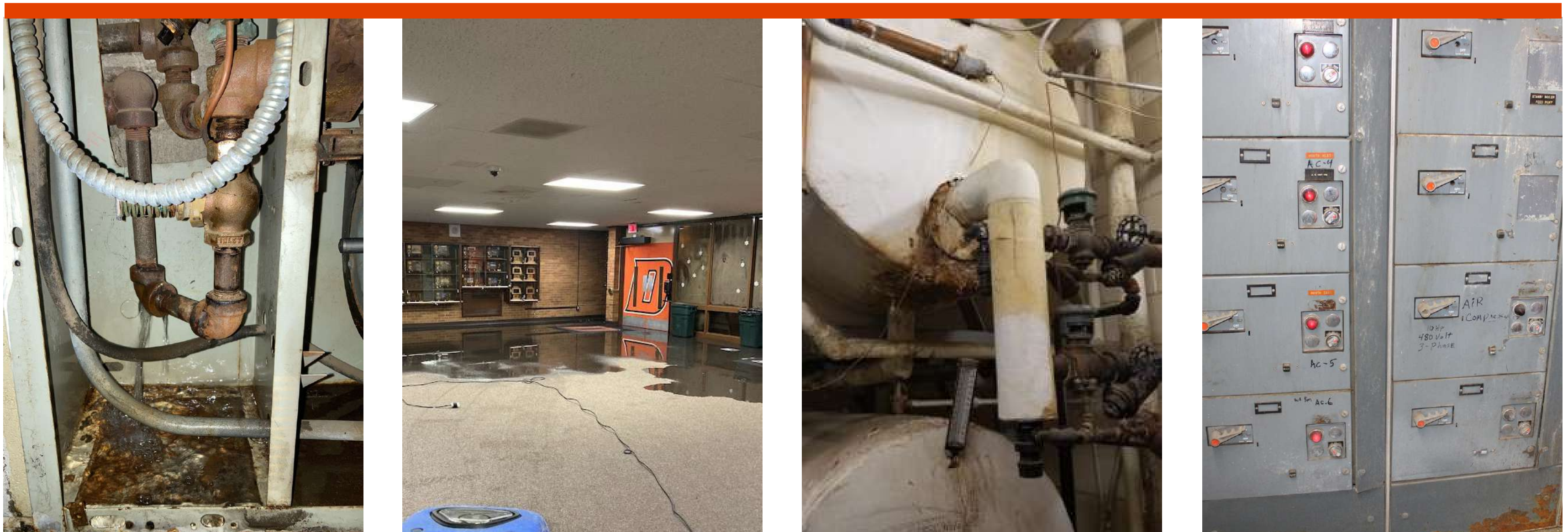
Community-Wide Survey

Surveyed the community to see if there is support for a \$69M bond.

DHS BUILDING CHALLENGES

A large portion of the District facility needs resides in Dickinson High School, with an estimated \$35 million in upkeep and repairs. The major projects at the high school include the following:

- Roofing Repairs/Replacement
- Fire Protection Systems
- HVAC Replacement
- Kitchen/Cafeteria Upgrades
- Electrical Upgrades and Improvements
- Intercom and Clock/Bell Systems
- ADA Accommodations
- Safety and Security



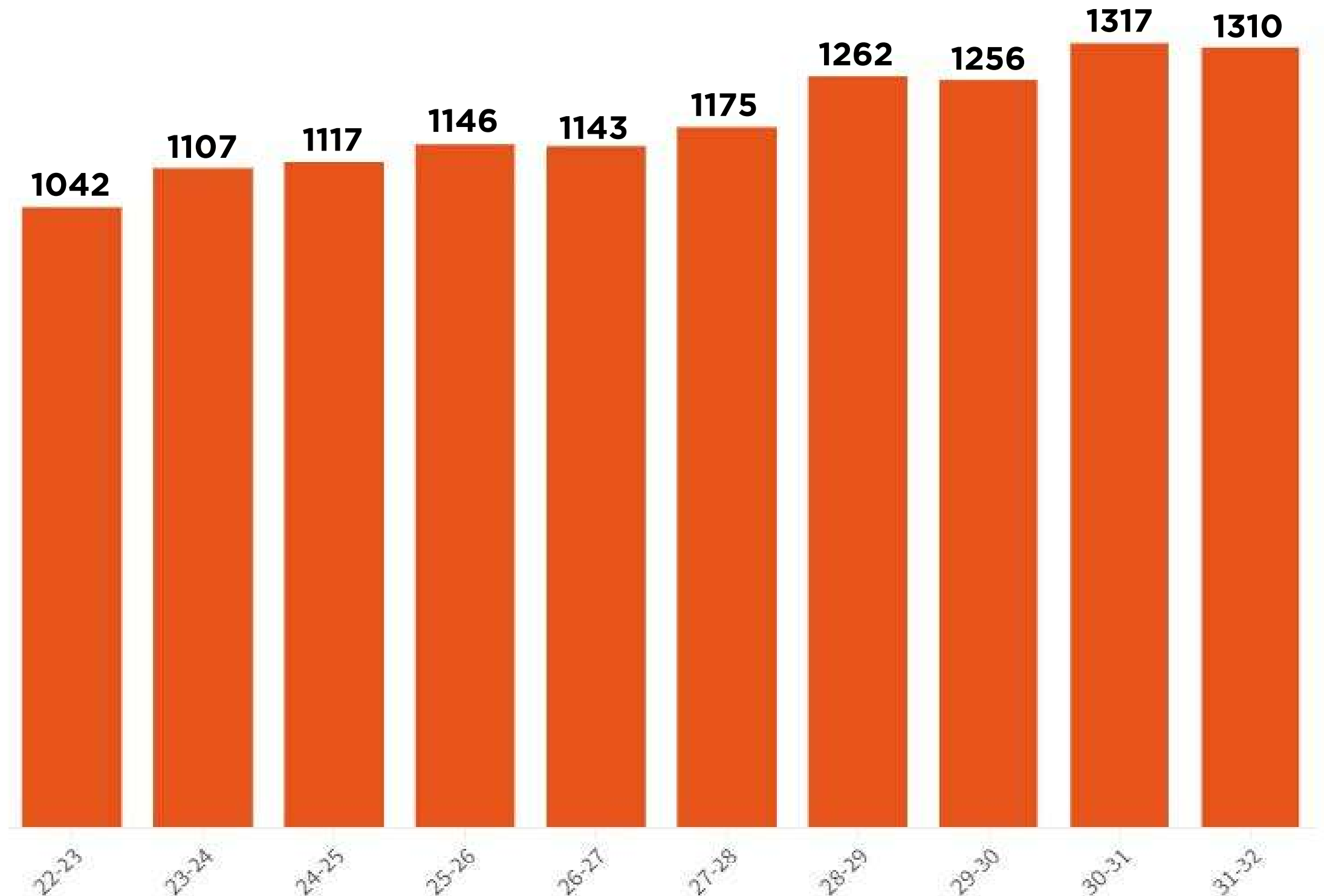
DHS CAPACITY CHALLENGES

PROJECTED FUTURE DHS ENROLLMENT BASED ON 2022-2023 ENROLLMENT

Dickinson High School is at capacity and will continue to see growth.

The Southwest Area Career and Technical Education Academy will provide some relief, but growing enrollment will continue to challenge the building. Incoming classes are projected to be larger than those graduating, furthering the classroom space challenges at the high school.

These numbers do not account for any additional growth in our community or schools.



SOLUTIONS WILL PROVIDE:

- Quality education
- Space for students to eat
- Comfortable, safe learning environment
- Adequate space to learn
- Equal access to facilities
- Continue to develop CTE space for community
- Options for students to learn effectively



DPS COMMUNITY FACILITIES SURVEY

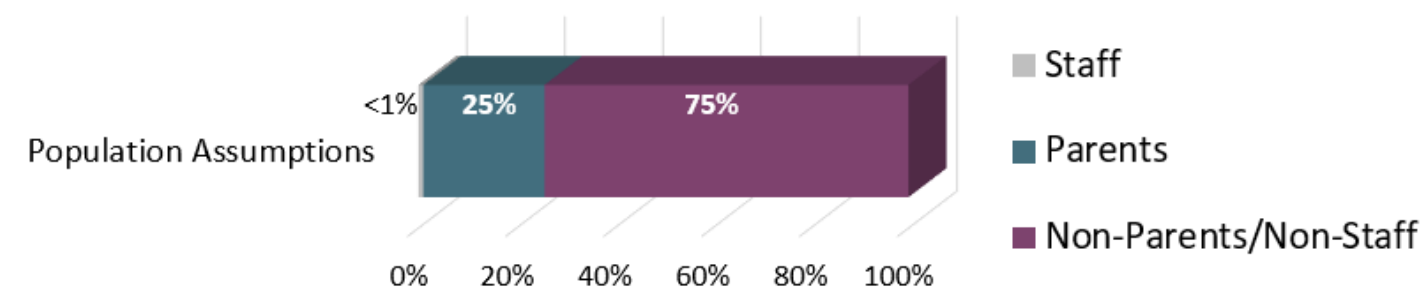
Dickinson High School

Would you support a \$69M bond to renovate Dickinson High School?

Definitely/Probably Yes - 83% of Staff survey respondents
 Definitely/Probably Yes - 72% of Parent survey respondents
 Definitely/Probably Yes - 52% of Non-Parents/Non-Staff

Overall Survey Support (Definitely Yes/Probably Yes)= 64.8%

Weighted support for Definitely Yes and Probably Yes:



Weighted Survey Support: $.25(72\%) + .75(52\%) = 57.0\%$

10-13% of survey respondents are undecided

Elementary Options

Survey results showed insufficient support for options given to address elementary growth.

WHAT IS IN THE \$69 MILLION PLAN?

High School

- 01** Addresses classrooms, cafeteria, and a secure entrance
- 02** Removes classroom pods and space up to the gym (Approximately 95,000 sq. ft.) →
- 03** Construction of a new building that will remain on the current Dickinson High School campus
- 04** New building will replace classroom pods, yellow building, and drivers education building and adds 20,000 additional square feet of space (228,532 sq. ft. total) →



Elementary

- 05** Increase safety and security features in elementary schools

WHY RENOVATING THE PODS IS NOT AN OPTION?

