

# Flemington–Raritan Regional School District



New Jersey Statewide  
Assessment Results  
Spring, 2014 Administration  
Board of Education Presentation  
November 24, 2014

Jonathan Hart  
Interim Assistant Superintendent  
Daniel E. Bland  
Assistant Superintendent

# New Jersey Statewide Assessment Program

- ▶ NJ Assessment of Skills and Knowledge
  - NJ ASK: Grades 3 & 4 (2003, 2009)
  - NJ ASK: Grades 5, 6 & 7 (2006, 2008)
  - NJ ASK: Grade 8 (2008); formerly GEPA (1999–2007)
- ▶ Shift toward Common Core
- ▶ PARCC to replace NJASK in 2014–2015;
- ▶ Alternate Proficiency Assessment (2004)
  - State–mandated assessment alternative for severely disabled students
  - Results incorporated into NJ ASK results

# NJ ASK: Understanding the Results

- ▶ Criterion–Referenced Test: measures students' progress in meeting the New Jersey Core Curriculum Content Standards
- ▶ Levels of Proficiency
  - Partially Proficient (score of 199 or less)
  - Proficient (score of 200–249)
  - Advanced Proficient (250 or more)
- ▶ The NJDOE revised and made more rigorous the criteria for earning “proficient” or “advanced proficient” status several years ago.
- ▶ NJASK Assessments have been revised to adapt to the new Common Core State Standards in ELA and Math

# What Skills and Knowledge are Assessed in Grades 3–5?

- ▶ English Language Arts (ELA)
  - Writing
    - Informative/Explanatory
    - Narrative
  - Reading
    - Literature
    - Informational Text
- ▶ Mathematics
  - Operations and Algebraic Thinking
  - Number and Operations in Base Ten
  - Number and Operations – Fractions
  - Measurement and Data
  - Geometry
- ▶ Science (grade 4)
  - Life Science
  - Physical Science
  - Earth Science
  - Knowledge
  - Application

# What Skills and Knowledge are Assessed in Grades 6–8?

- ▶ English Language Arts (ELA)
  - Writing
    - Persuasive
    - Narrative
  - Reading
    - Literature
    - Informational Text
- ▶ Mathematics
  - Number and Numerical Operations
  - Geometry and Measurement
  - Patterns and Algebra
  - Data Analysis, Probability and Discrete Mathematics
  - Problem Solving
- ▶ Science (grade 8)
  - Life Science
  - Physical Science
  - Earth Science
  - Knowledge
  - Application

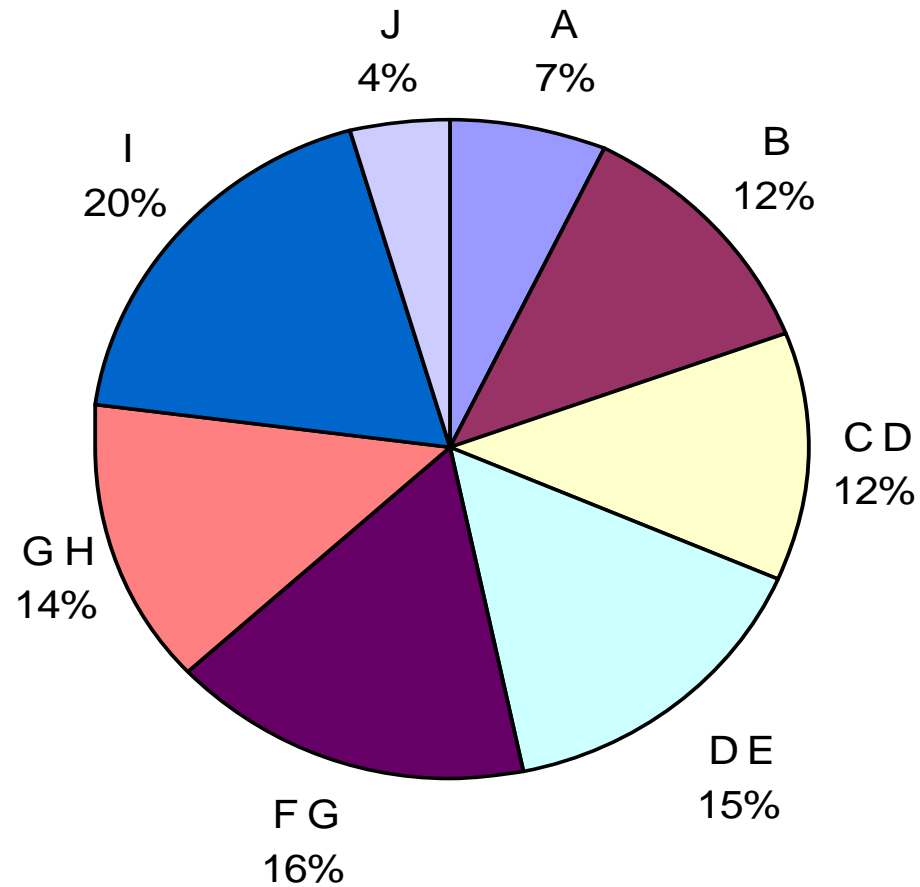
# Logistics: How are Skills and Knowledge Assessed?

- ▶ When: April–May 2014 (3–8)
- ▶ Who: Every 3–8<sup>th</sup> Grade Student (APA)
- ▶ How: Timed Test  
Secure Testing Materials
- ▶ Format: Multiple–Choice Questions  
Short Constructed Response  
Open–Ended Questions  
Writing Tasks
- ▶ Scoring: NJ Department of Education

# District Factor Grouping–DFG

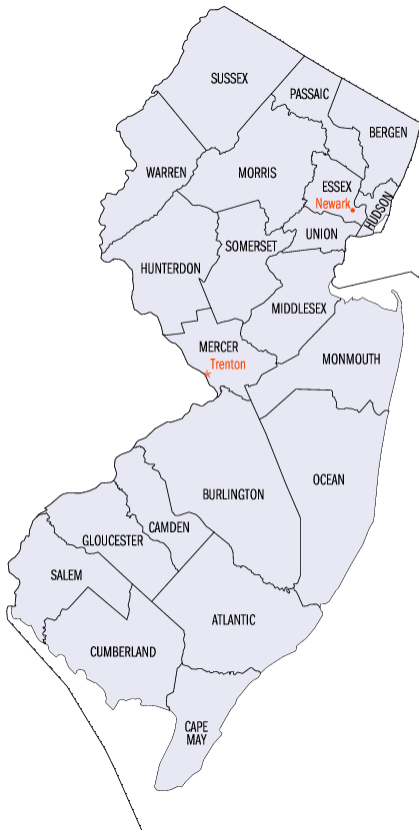
- ▶ DFGs represent an approximate measure of a community's relative socioeconomic status (SES).
- ▶ Six Variables Associated with SES:
  - Percent of adults with no high school diploma
  - Percent of adults with some college education
  - Occupational status
  - Unemployment rate
  - Percent of individuals in poverty
  - Median family income

# 8 District Factor Groupings





# Local DFG “I” Comparables



Hunterdon	Somerset	Warren
Bethlehem Twp	Bedminster Twp.	Allamuchy Twp.
Califon Boro	Branchburg Twp	Greenwich Twp.
Clinton Town	Bridgewater-Raritan	
Clinton Twp	Hillsborough	<b>Mercer</b>
East Amwell	Somerset Hills	Hopewell Valley
Franklin Twp	Warren Twp.	Princeton Regional
Hunterdon Central	Watchung Boro	Washington Twp.
Lebanon Boro	Watchung Hills	
Lebanon Twp		
N. Hunt/Voorhees		
Readington		

# NJ ASK Assessment Results



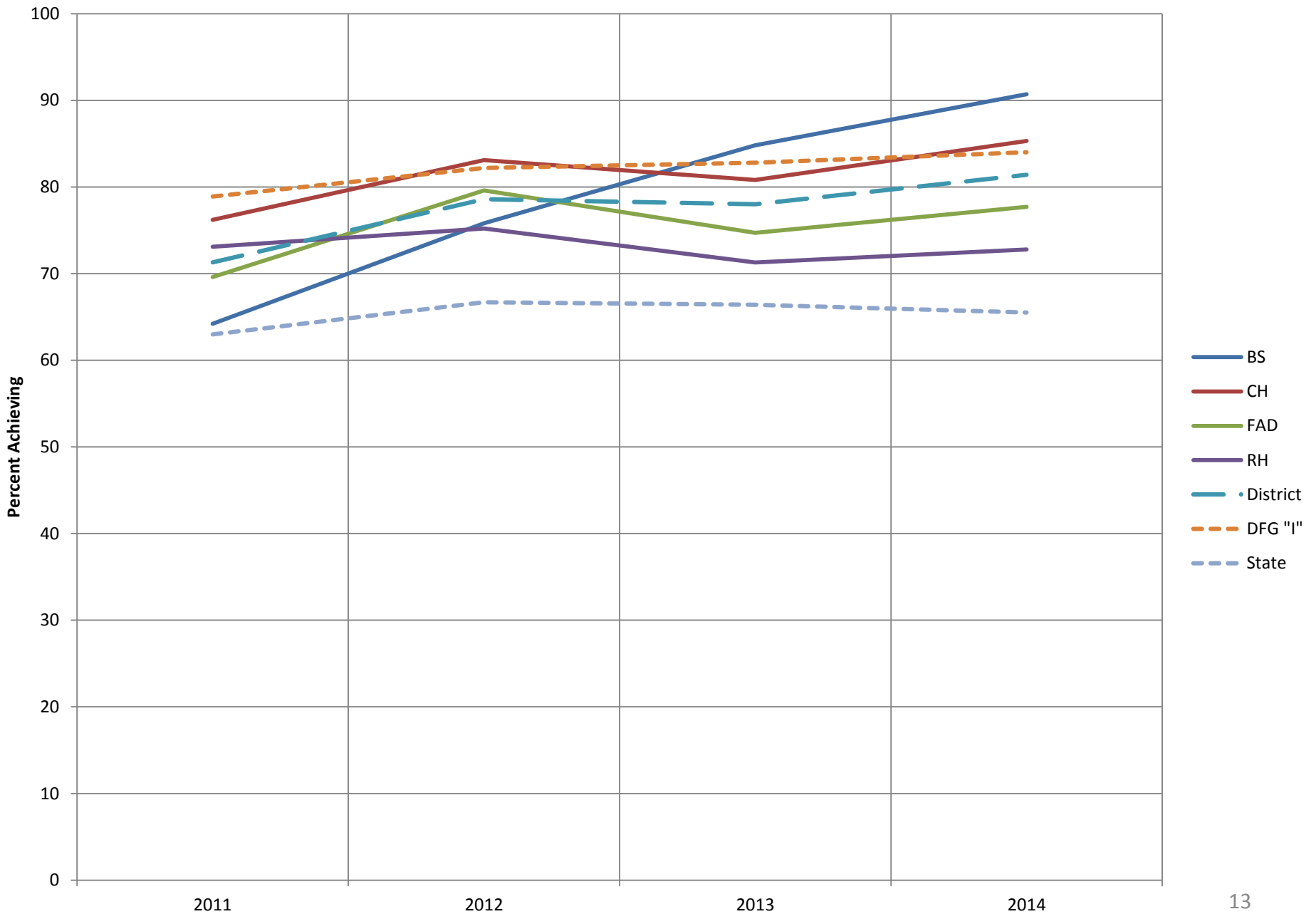
# Third Grade Results

New Jersey Assessment of Skills and  
Knowledge

# Grade 3: Proficient and Above by School

Language Arts	Barley Sheaf	Copper Hill	F.A.D.	Robert Hunter	FRSD	DFG I
Total Population	90.7%	85.3%	77.7%	72.8%	81.4%	84.0%
General Educ.	92.2%	93.2%	82.9%	85.1%	88.3%	89.9%
Special Educ.	90.0%	50.0%	50.0%	28.6%	52.0%	57.7%

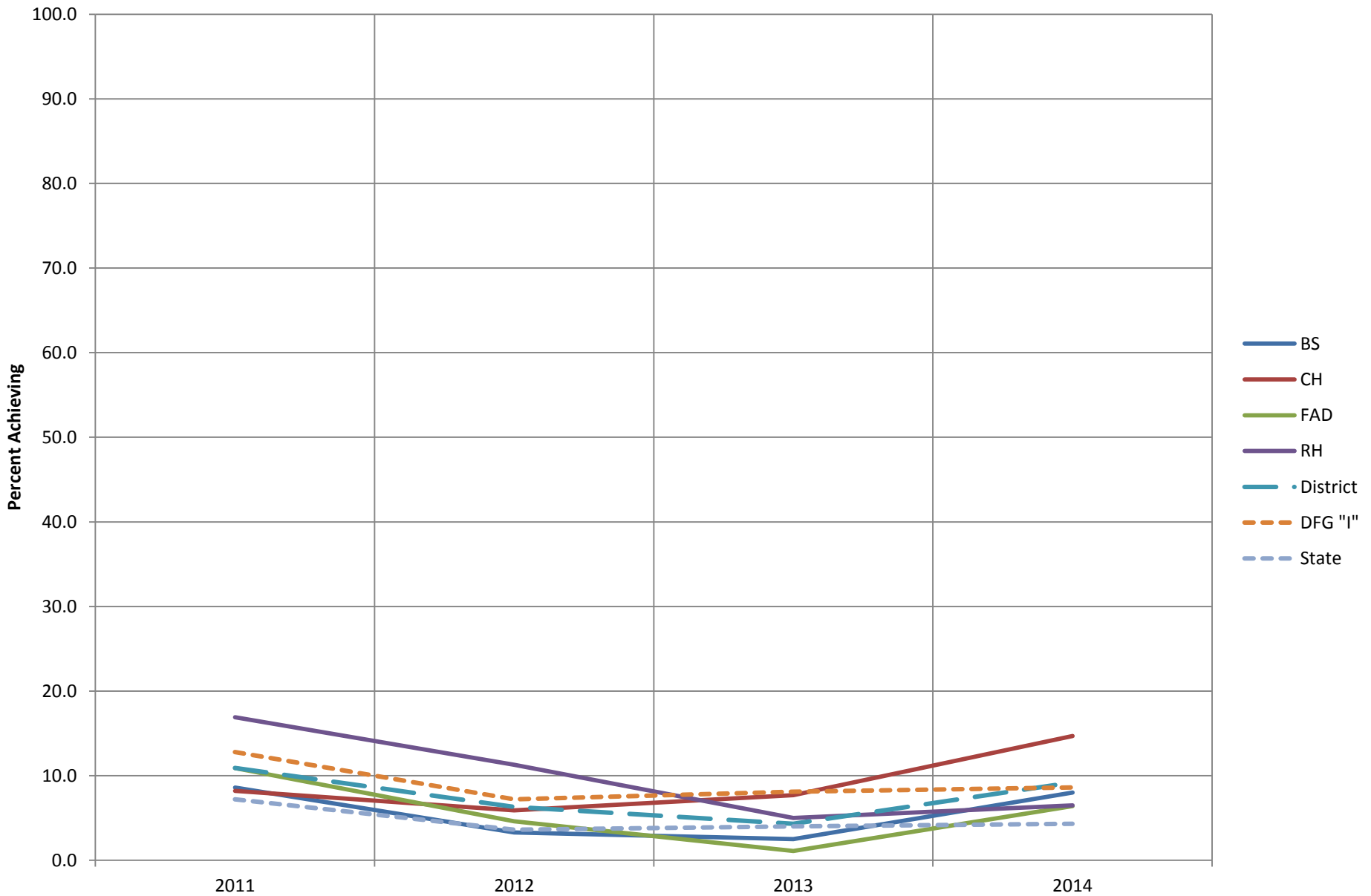
# Grade 3 LAL: Proficient and Above



# Grade 3: Advanced Proficient by School

Language Arts	Barley Sheaf	Copper Hill	F.A.D.	Robert Hunter	FRSD	DFG I
Total Population	8.0%	14.7%	6.4%	6.5%	9.2%	8.6%
General Educ.	9.4%	15.7%	6.1%	8.1%	10.0%	9.9%
Special Educ.	0.0%	10.0%	12.5%	0.0%	5.8%	2.8%

## Grade 3 LAL: Advanced Proficient

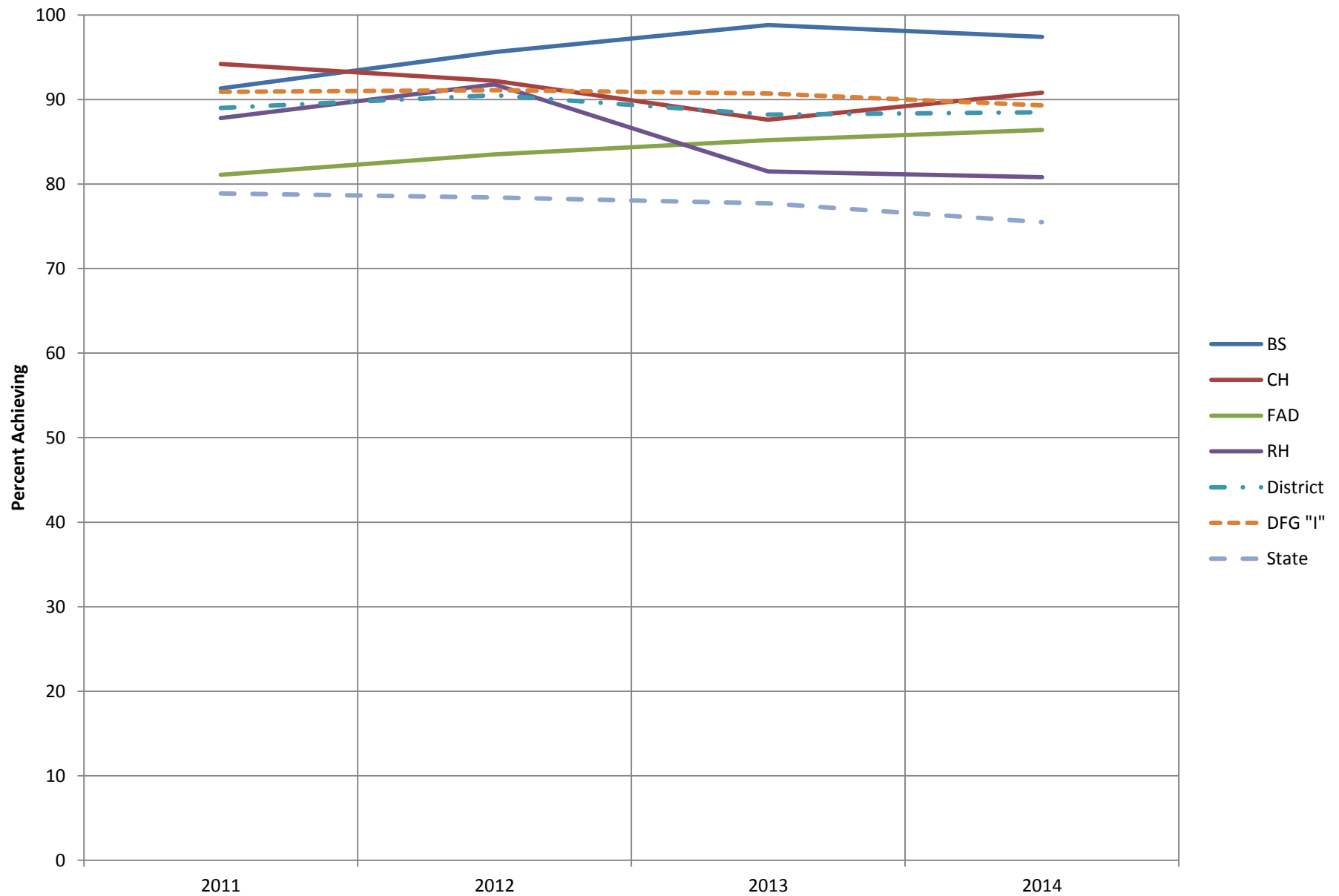


# Grade 3: Proficient and Above by School

<b>Mathematics</b>	<b>Barley Sheaf</b>	<b>Copper Hill</b>	<b>F.A.D.</b>	<b>Robert Hunter</b>	<b>FRSD</b>	<b>DFG I</b>
Total Population	97.4%	90.8%	86.4%	80.8%	88.5%	89.3%
General Educ.	98.5%	95.5%	90.3%	93.3%	94.2%	93.5%
Special Educ.	91.0%	70.0%	66.6%	31.3%	62.5%	71.1%



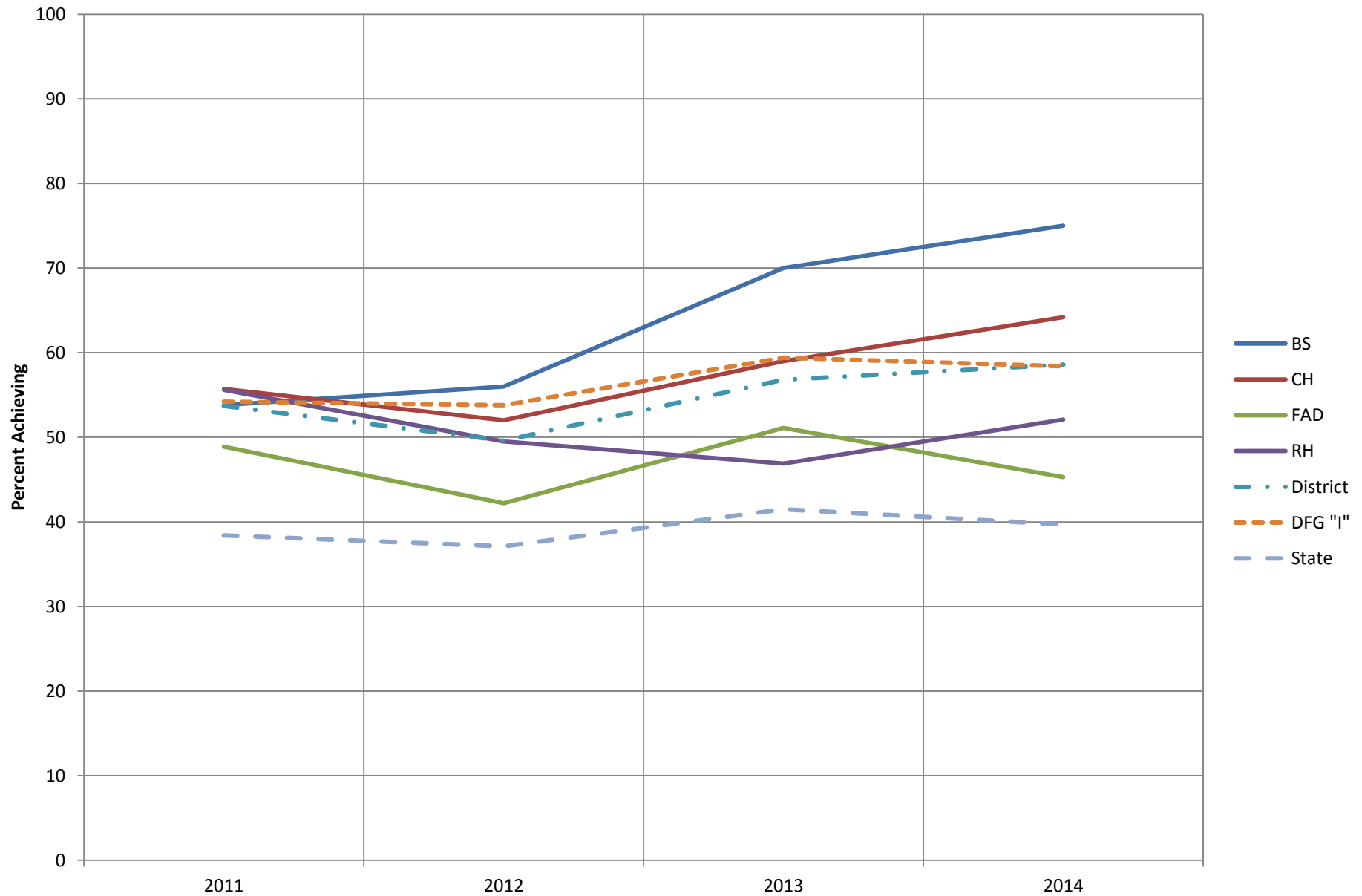
## Grade 3 Math: Proficient and Above



# Grade 3: Advanced Proficient by School

<b>Mathematics</b>	<b>Barley Sheaf</b>	<b>Copper Hill</b>	<b>F.A.D.</b>	<b>Robert Hunter</b>	<b>FRSD</b>	<b>DFG I</b>
Total Population	75.0%	64.2%	45.3%	52.1%	58.6%	58.4%
General Educ.	81.3%	70.8%	47.6%	64.9%	65.4%	63.6%
Special Educ.	45.5%	35.0%	44.4%	6.3%	30.4%	35.4%

## Grade 3 Math: Advanced Proficient



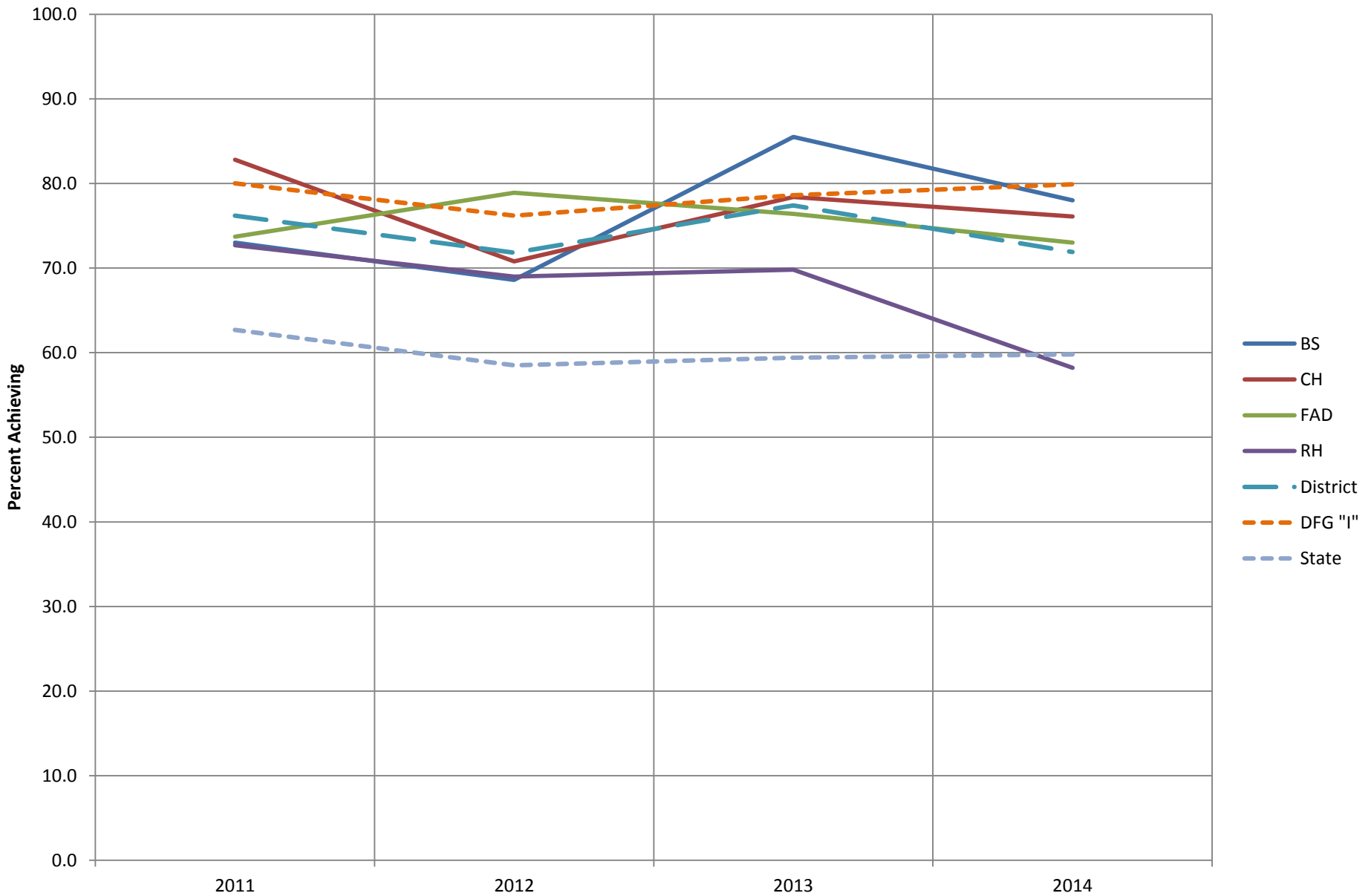
# Fourth Grade Results

New Jersey Assessment of Skills and  
Knowledge

# Grade 4: Proficient and Above by School

<b>Language Arts</b>	<b>Barley Sheaf</b>	<b>Copper Hill</b>	<b>F.A.D.</b>	<b>Robert Hunter</b>	<b>FRSD</b>	<b>DFG I</b>
Total Population	78.0%	76.1%	73.0%	58.2%	71.9%	79.9%
General Educ.	83.6%	80.9%	80.0%	71.2%	79.3%	86.3%
Special Educ.	53.3%	58.3%	40.0%	21.1%	43.8%	51.2%

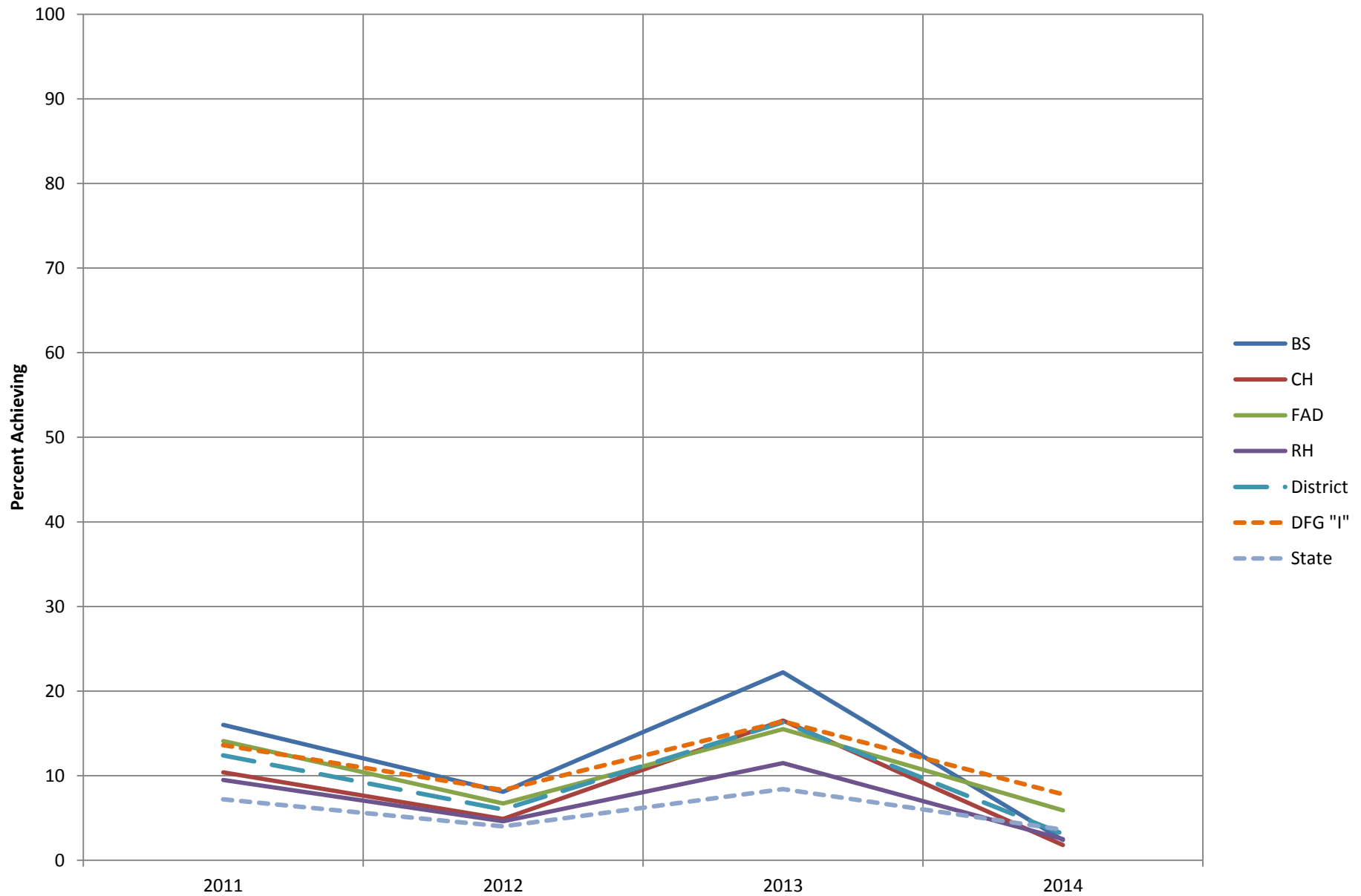
## Grade 4 LAL: Proficient and Above



# Grade 4: Advanced Proficient by School

<b>Language Arts</b>	<b>Barley Sheaf</b>	<b>Copper Hill</b>	<b>F.A.D.</b>	<b>Rob. Hunter</b>	<b>FRSD</b>	<b>DFG I</b>
Total Population	2.4%	1.8%	5.9%	2.5%	3.1%	7.8%
General Educ.	3.0%	2.2%	7.1%	3.4%	3.9%	9.0%
Special Educ.	0.0%	0.0%	0.0%	0.0%	0.0%	2.2%

## Grade 4 LAL: Advanced Proficient

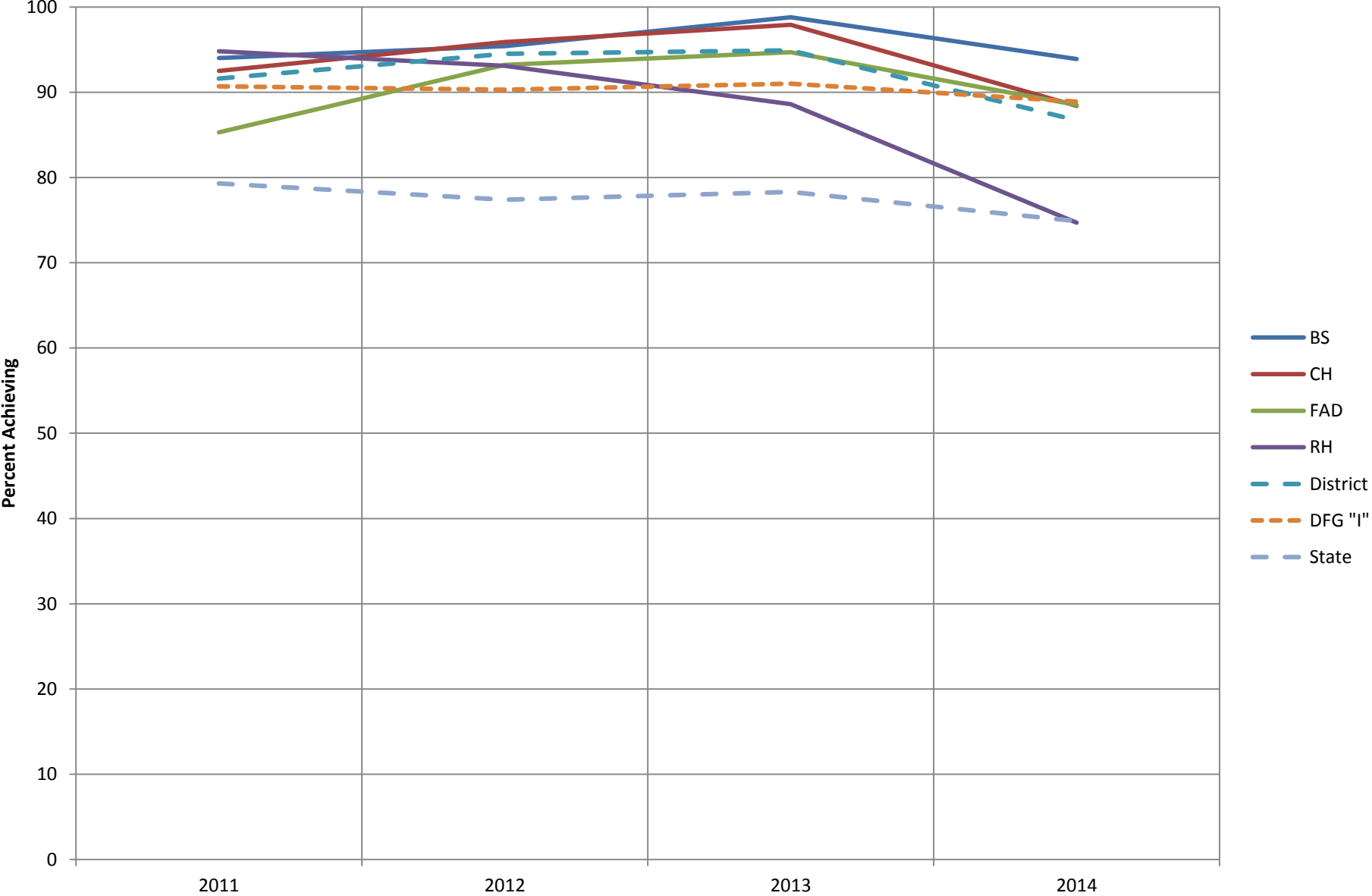




# Grade 4: Proficient and Above by School

<b>Mathematics</b>	<b>Barley Sheaf</b>	<b>Copper Hill</b>	<b>F.A.D.</b>	<b>Robert Hunter</b>	<b>FRSD</b>	<b>DFG I</b>
Total Population	93.9%	88.4%	88.5%	74.7%	86.7%	88.9%
General Educ.	94.0%	93.2%	95.7%	89.8%	93.3%	93.5%
Special Educ.	93.4%	69.6%	62.6%	31.6%	63.0%	69.0%

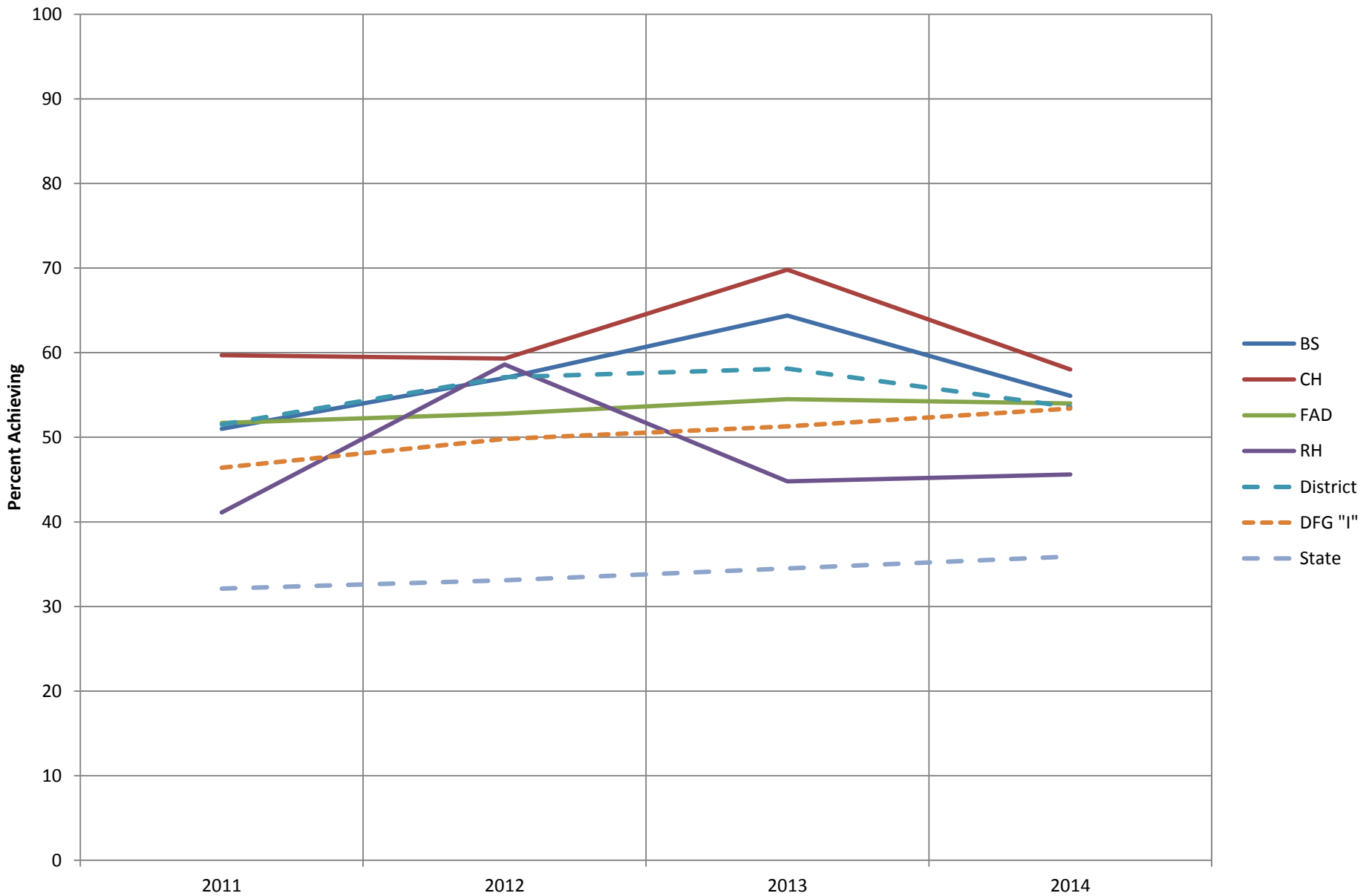
# Grade 4 Math: Proficient and Above



# Grade 4: Advanced Proficient by School

Mathematics	Barley Sheaf	Copper Hill	F.A.D.	Robert Hunter	FRSD	DFG I
Total Population	54.9%	58.0%	54.0%	45.6%	53.6%	53.4%
General Educ.	56.7%	64.0%	60.0%	54.2%	59.3%	59.0%
Special Educ.	46.7%	34.8%	31.3%	21.1%	32.9%	28.9%

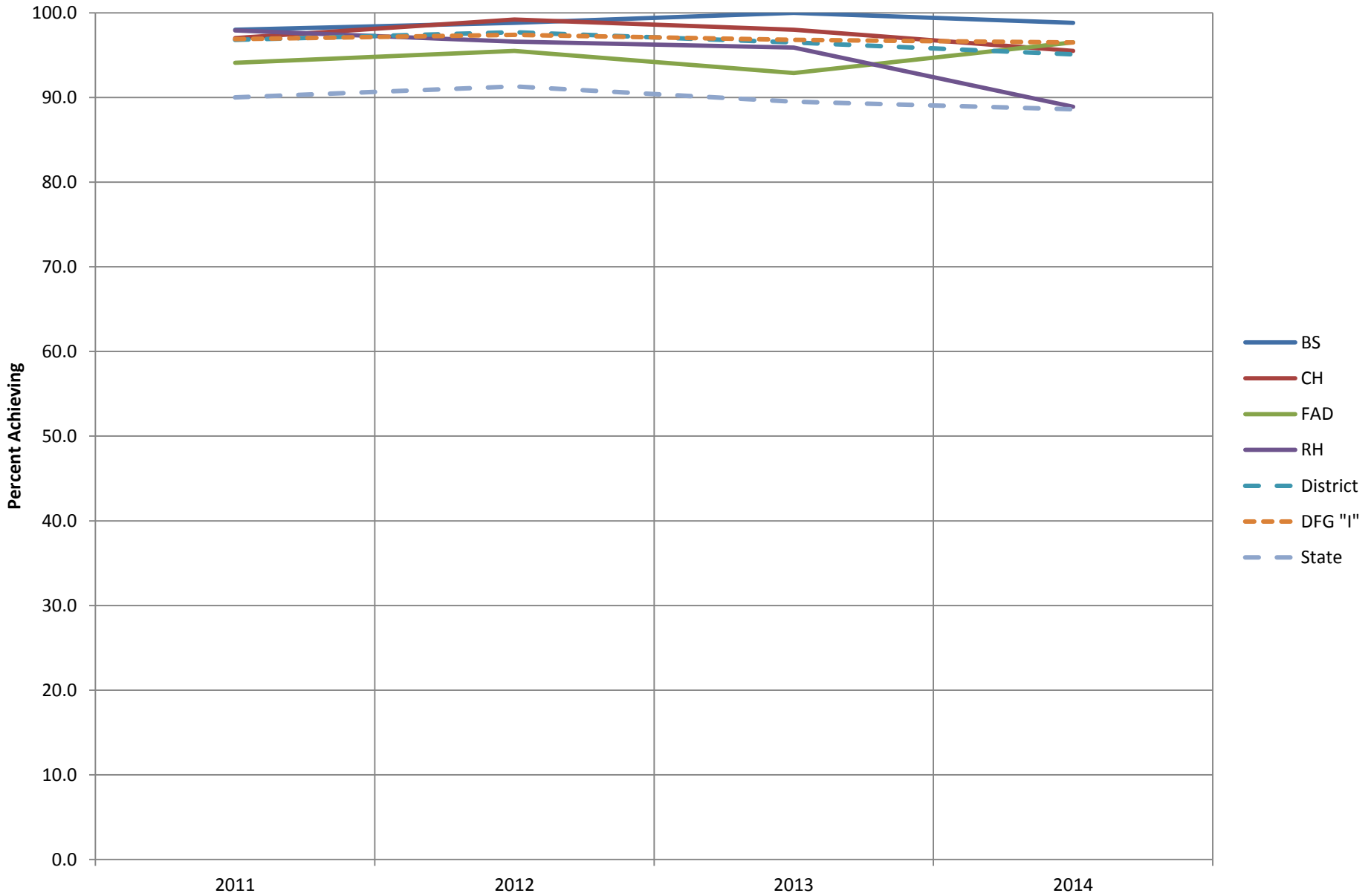
# Grade 4 Math: Advanced Proficient



# Grade 4: Proficient and Above by School

<b>Science</b>	<b>Barley Sheaf</b>	<b>Copper Hill</b>	<b>F.A.D.</b>	<b>Robert Hunter</b>	<b>FRSD</b>	<b>DFG I</b>
Total Population	98.8%	95.5%	96.5%	88.9%	95.1%	96.5%
General Educ.	100.0%	97.8%	100.0%	96.6%	98.6%	98.4%
Special Educ.	94.1%	87.5%	87.6%	71.4%	84.7%	88.3%

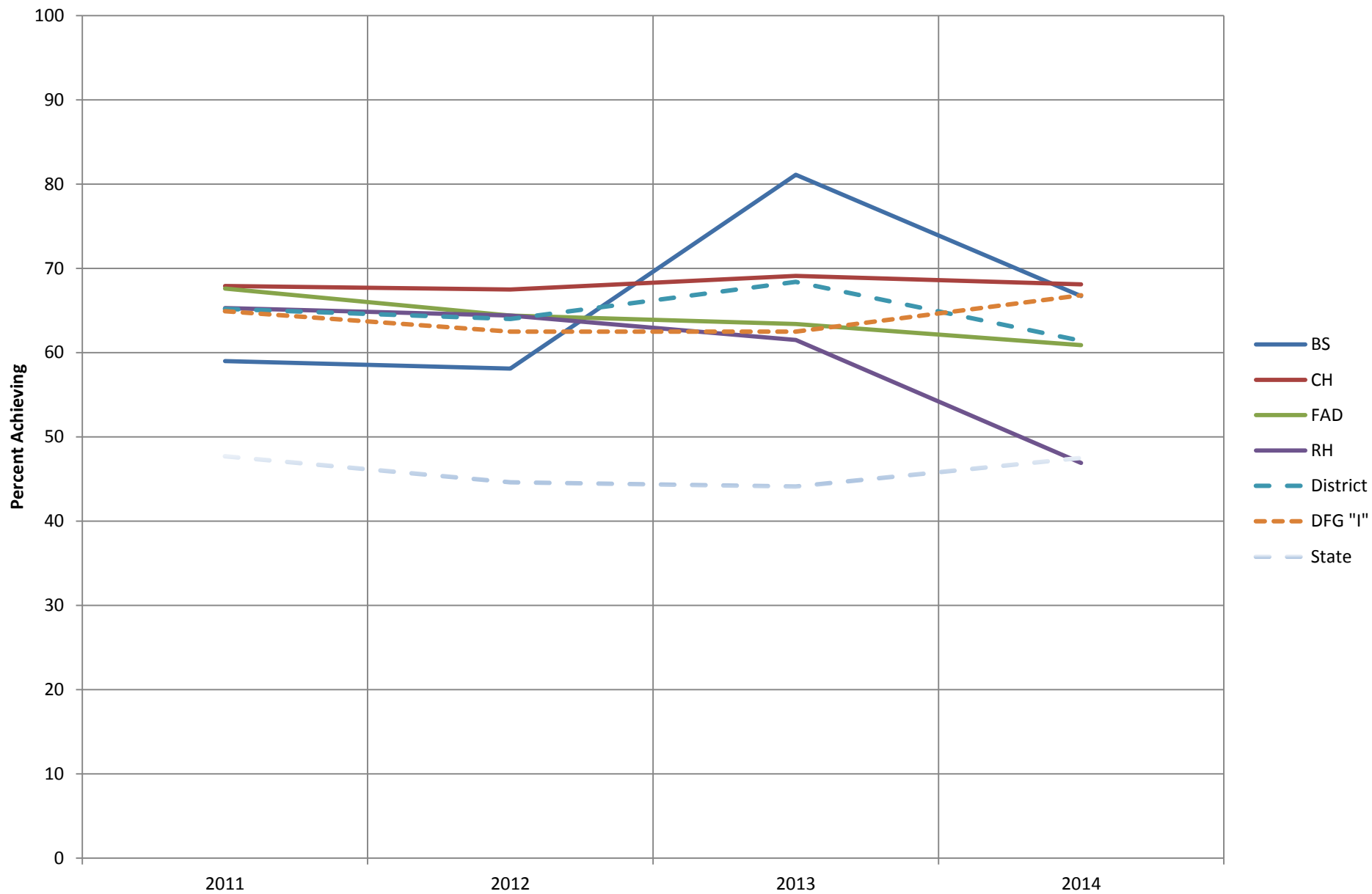
# Grade 4 Science: Proficient and Above



# Grade 4: Advanced Proficient by School

Science	Barley Sheaf	Copper Hill	F.A.D.	Robert Hunter	FRSD	DFG I
Total Population	66.7%	68.1%	60.9%	46.9%	61.4%	66.8%
General Educ.	70.1%	78.7%	68.6%	57.6%	69.8%	71.7%
Special Educ.	52.9%	29.2%	31.3%	19.0%	32.1%	45.9%

# Grade 4 Science: Advanced Proficient





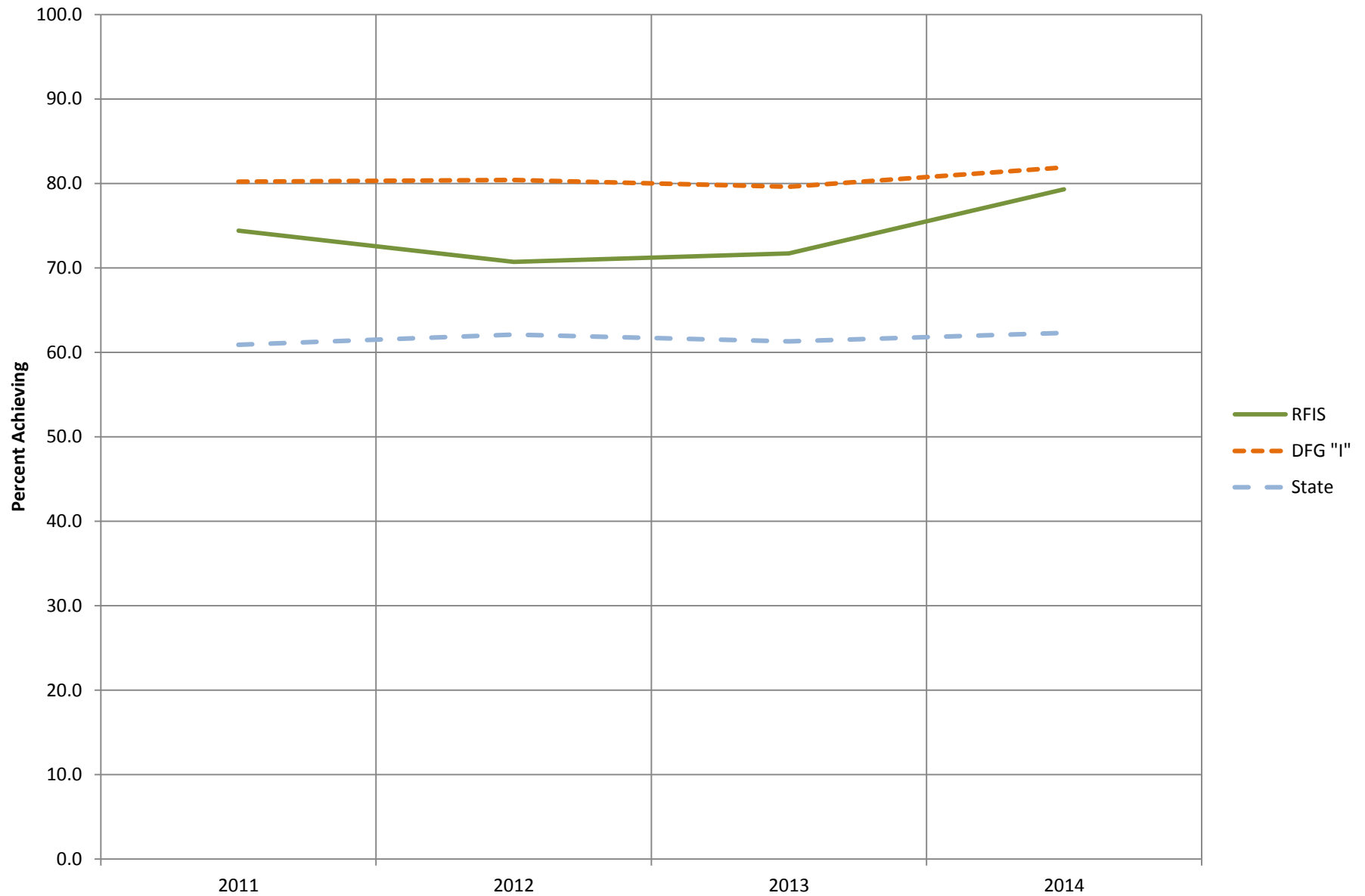
# Fifth Grade Results

New Jersey Assessment of Skills and  
Knowledge

# Grade 5: Proficient and Above

Language Arts	State	DFG "I"	FRSD
Total Population	62.3%	81.9%	79.3%
General Educ.	70.4%	88.9%	84.8%
Special Educ.	29.5%	48.9%	51.5%

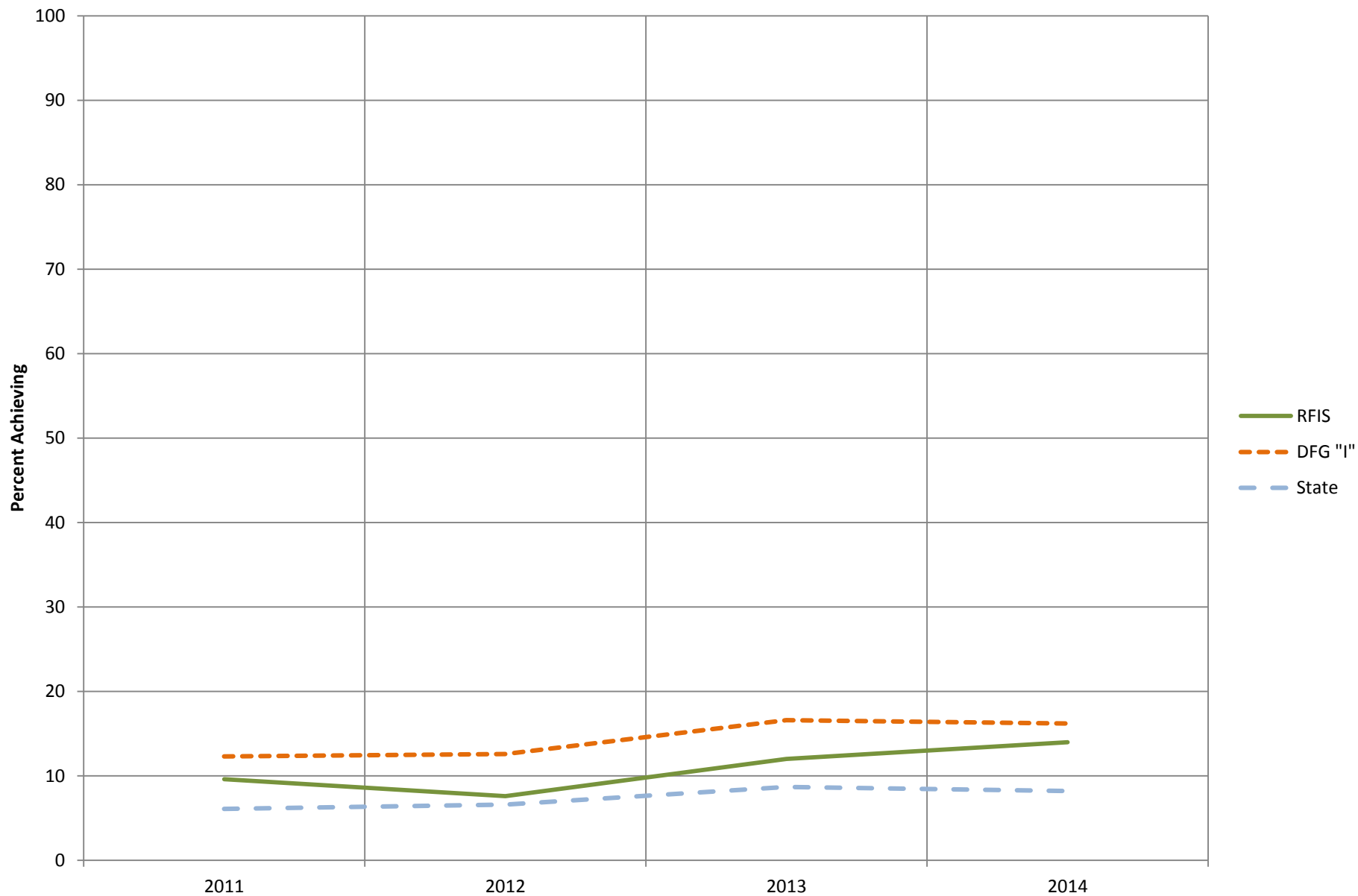
## Grade 5: LAL Proficient and Above



# Grade 5: Advanced Proficient

Language Arts	State	DFG "I"	FRSD
Total Population	8.2%	16.2%	14.0%
General Educ.	9.9%	18.9%	16.2%
Special Educ.	1.5%	3.5%	3.1%

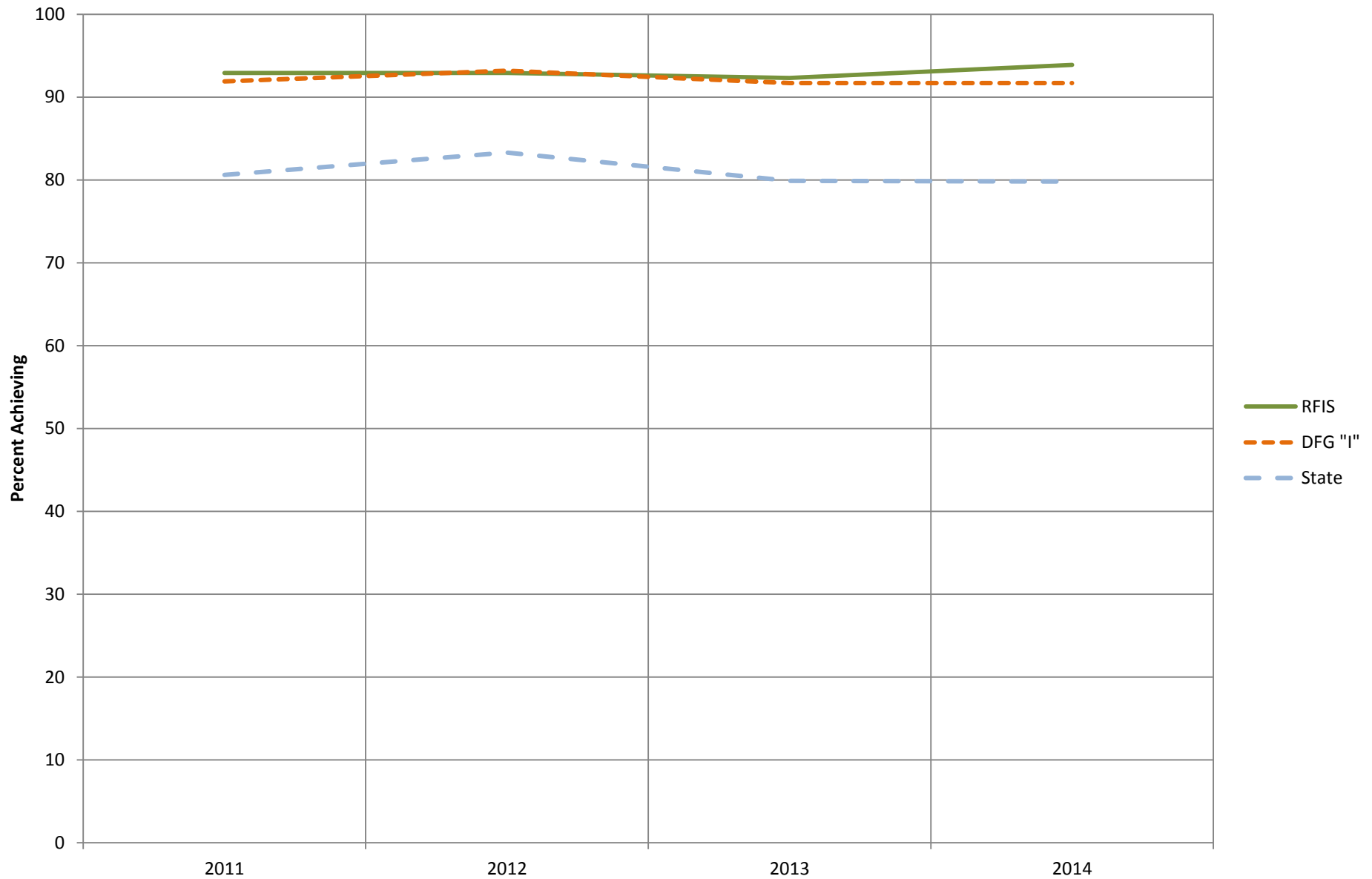
# Grade 5 LAL: Advanced Proficient



# Grade 5: Proficient and Above

Mathematics	State	DFG "I"	FRSD
Total Population	79.8%	91.7%	93.9%
General Educ.	86.2%	96.1%	97.0%
Special Educ.	53.6%	70.9%	78.8%

## Grade 5 Math: Proficient and Above

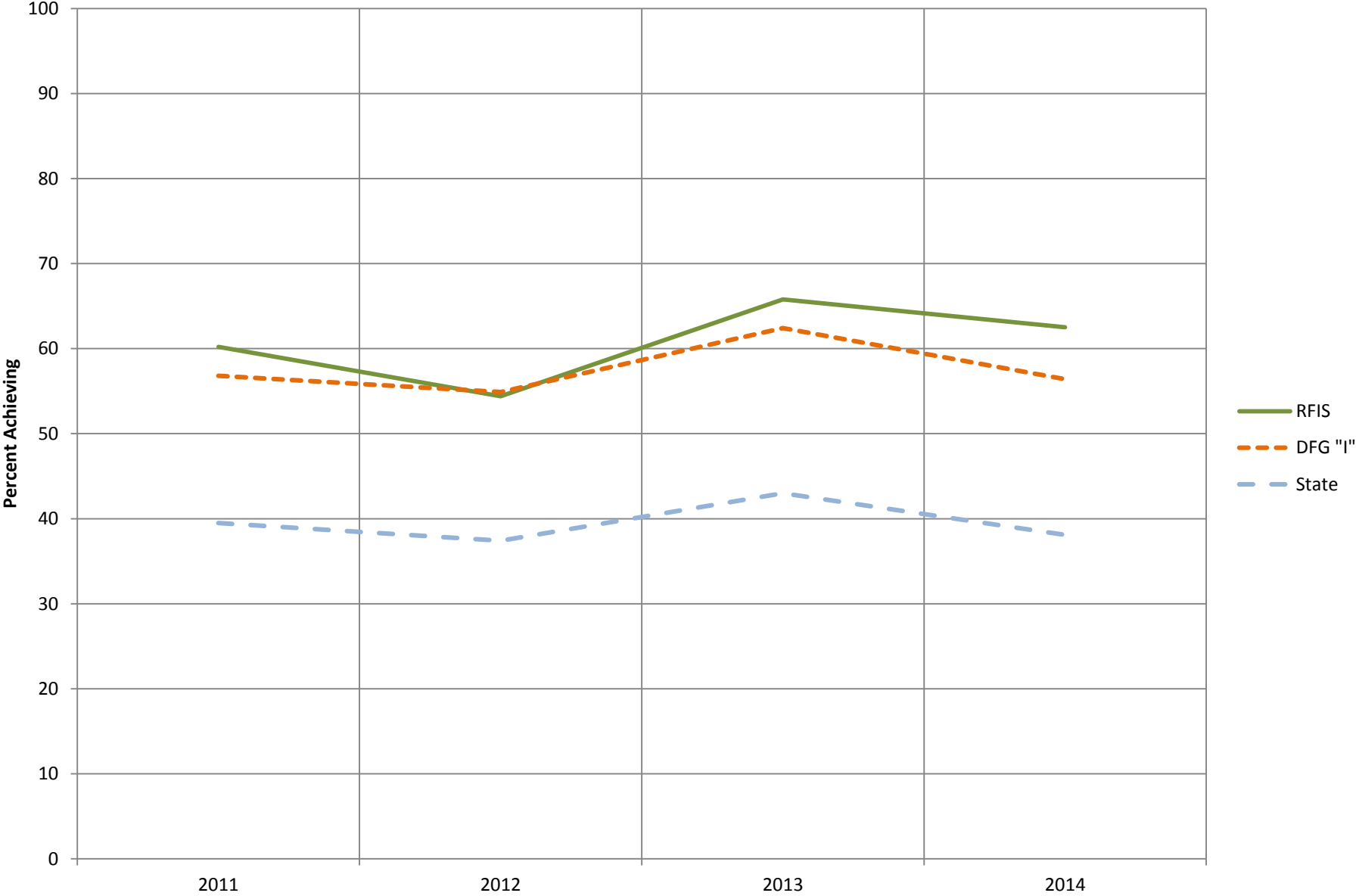


# Grade 5: Advanced Proficient

<b>Mathematics</b>	<b>State</b>	<b>DFG "I"</b>	<b>FRSD</b>
Total Population	38.1%	56.4%	62.5%
General Educ.	43.7%	62.8%	68.4%
Special Educ.	15.2%	25.7%	33.3%



# Grade 5 Math: Advanced Proficient



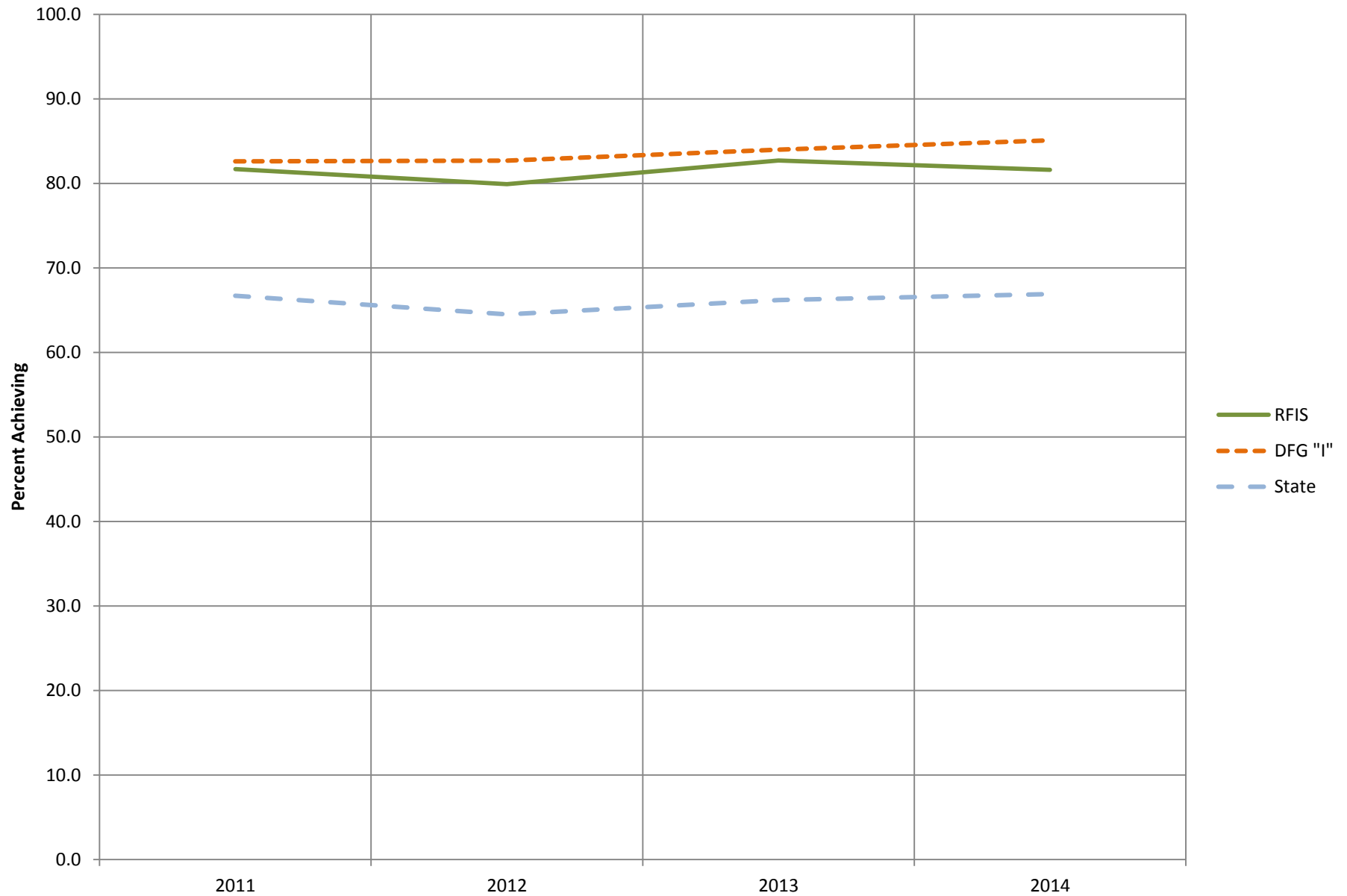
# Sixth Grade Results

New Jersey Assessment of Skills and  
Knowledge

# Grade 6: Proficient and Above

<b>Language Arts</b>	<b>State</b>	<b>DFG “I”</b>	<b>FRSD</b>
Total Population	66.9%	85.1%	81.6%
General Educ.	75.7%	92.1%	90.8%
Special Educ.	29.0%	48.5%	32.2%

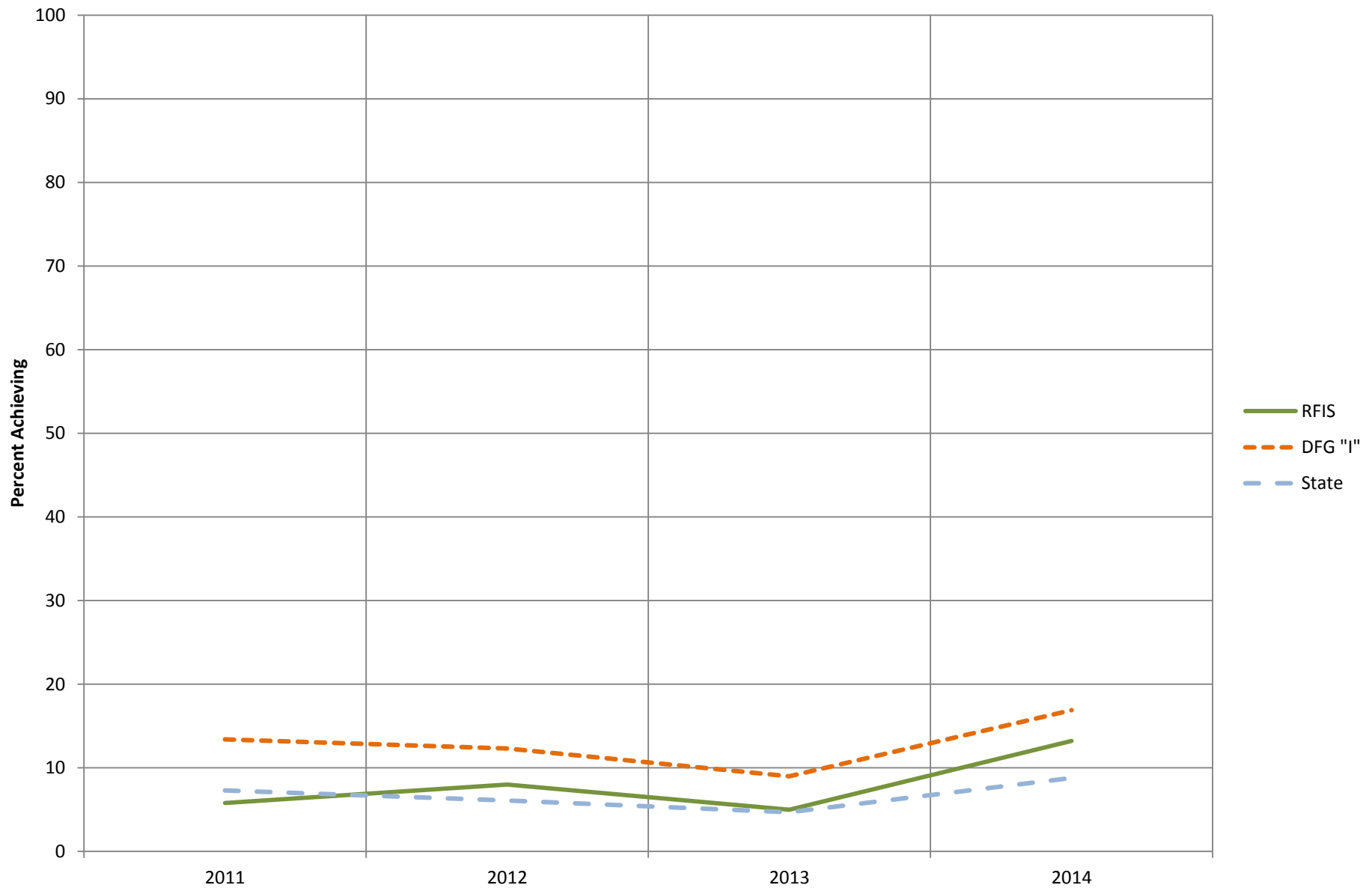
## Grade 6: LAL Proficient and Above



# Grade 6: Advanced Proficient

<b>Language Arts</b>	<b>State</b>	<b>DFG “I”</b>	<b>FRSD</b>
Total Population	8.8%	16.9%	13.2%
General Educ.	10.6%	19.6%	15.0%
Special Educ.	1.1%	2.4%	3.6%

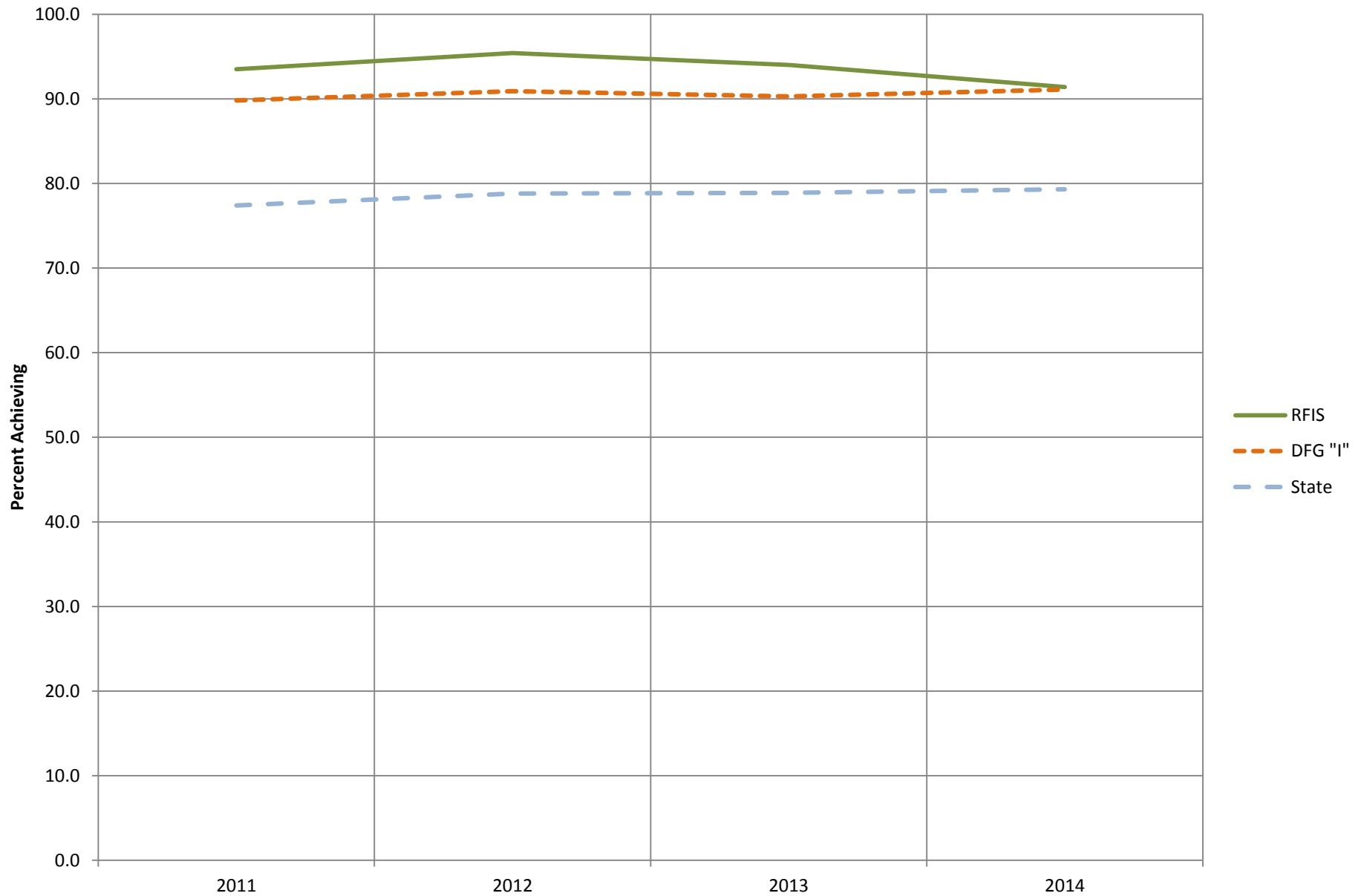
## Grade 6 LAL: Advanced Proficient



# Grade 6: Proficient and Above

<b>Mathematics</b>	<b>State</b>	<b>DFG "I"</b>	<b>FRSD</b>
Total Population	79.3%	91.1%	91.4%
General Educ.	86.8%	96.4%	97.9%
Special Educ.	46.7%	63.4%	57.2%

## Grade 6 Math: Proficient and Above

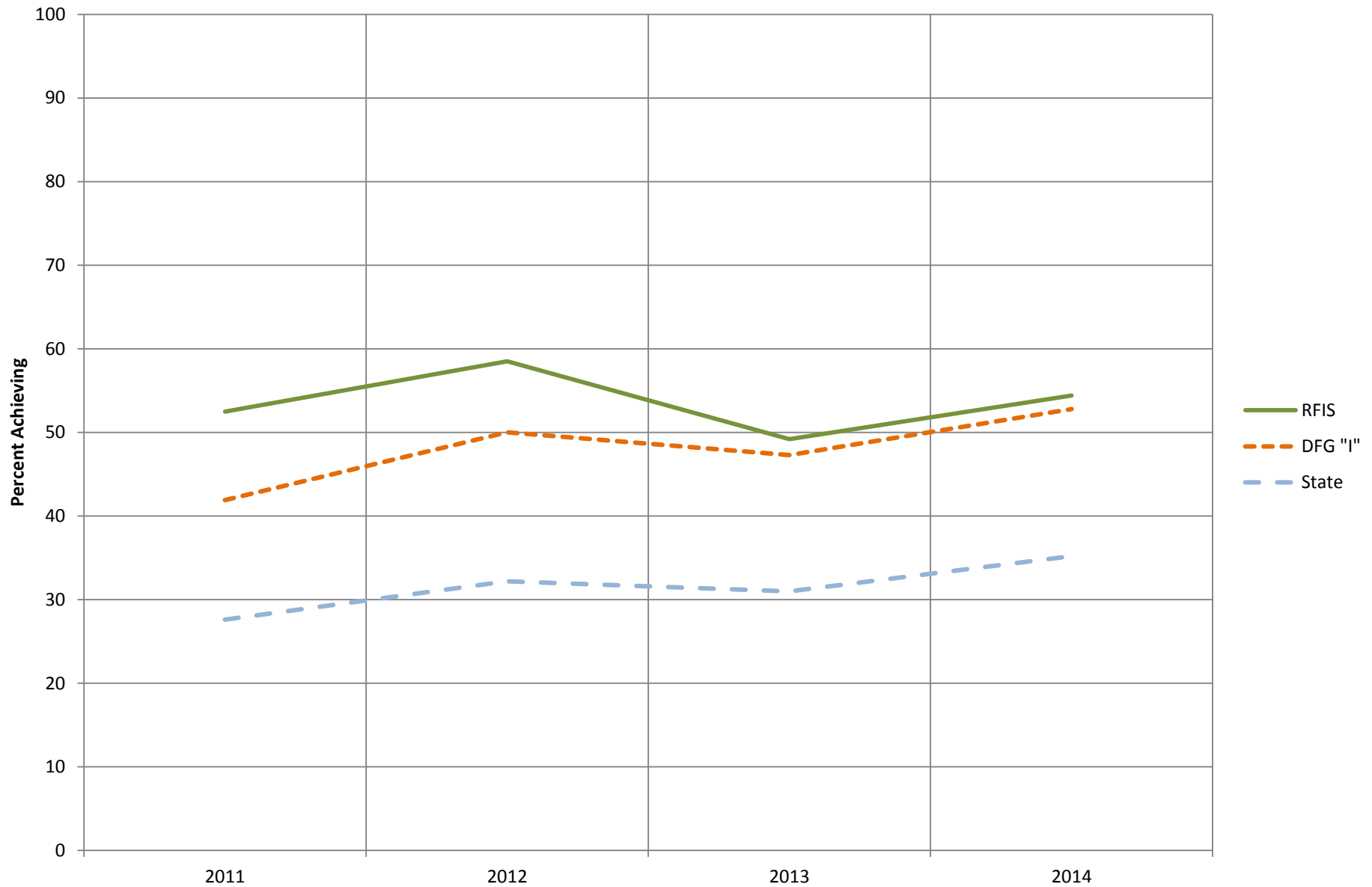




# Grade 6: Advanced Proficient

<b>Mathematics</b>	<b>State</b>	<b>DFG "I"</b>	<b>FRSD</b>
Total Population	35.2%	52.8%	54.4%
General Educ.	40.9%	59.4%	61.2%
Special Educ.	10.0%	17.8%	17.9%

## Grade 6 Math: Advanced Proficient



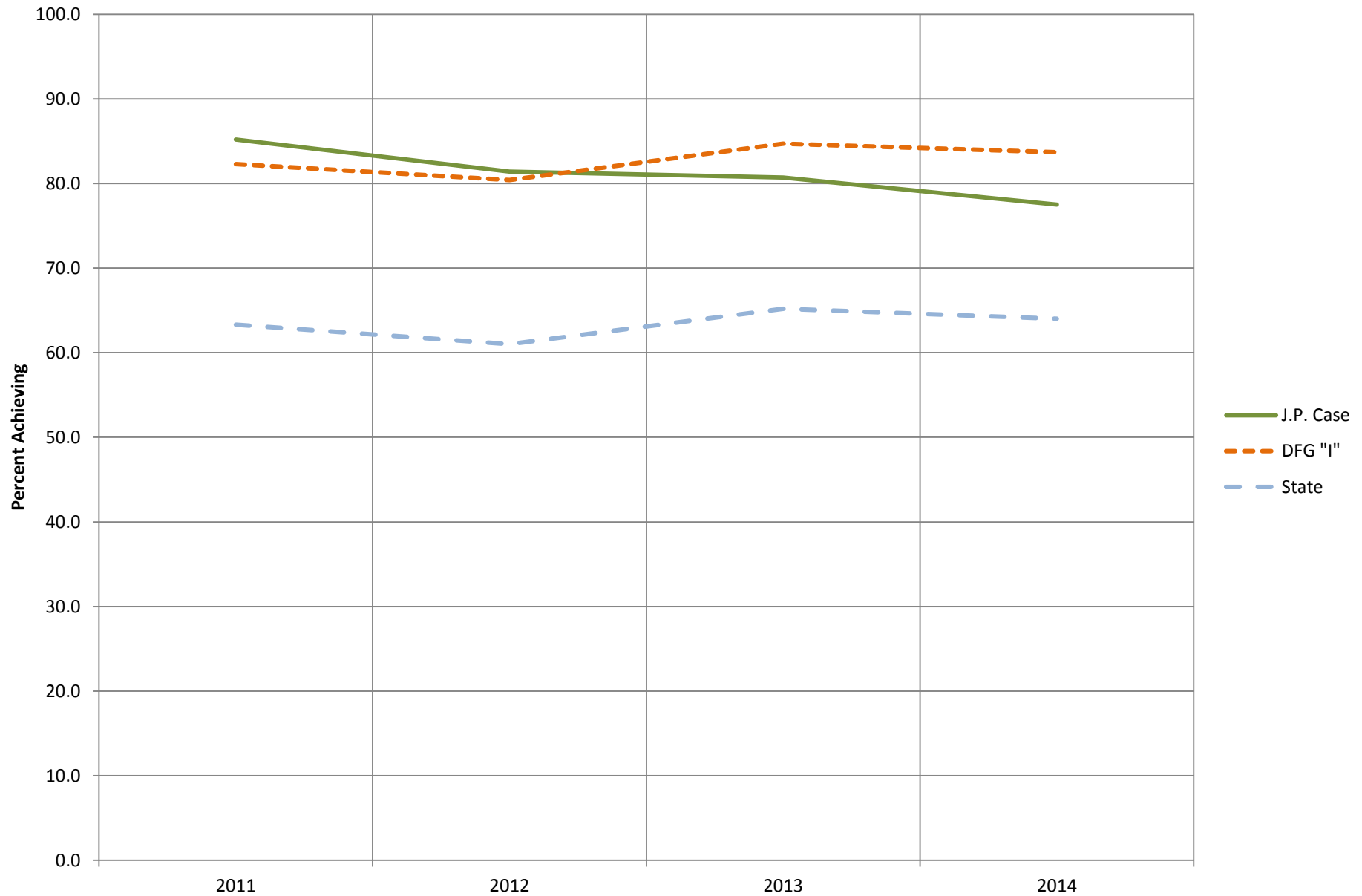
# Seventh Grade Results

New Jersey Assessment of Skills and  
Knowledge

# Grade 7: Proficient and Above

Language Arts	State	DFG "I"	FRSD
Total Population	64.0%	83.7%	77.5%
General Educ.	72.9%	90.7%	85.2%
Special Educ.	24.8%	44.9%	45.3%

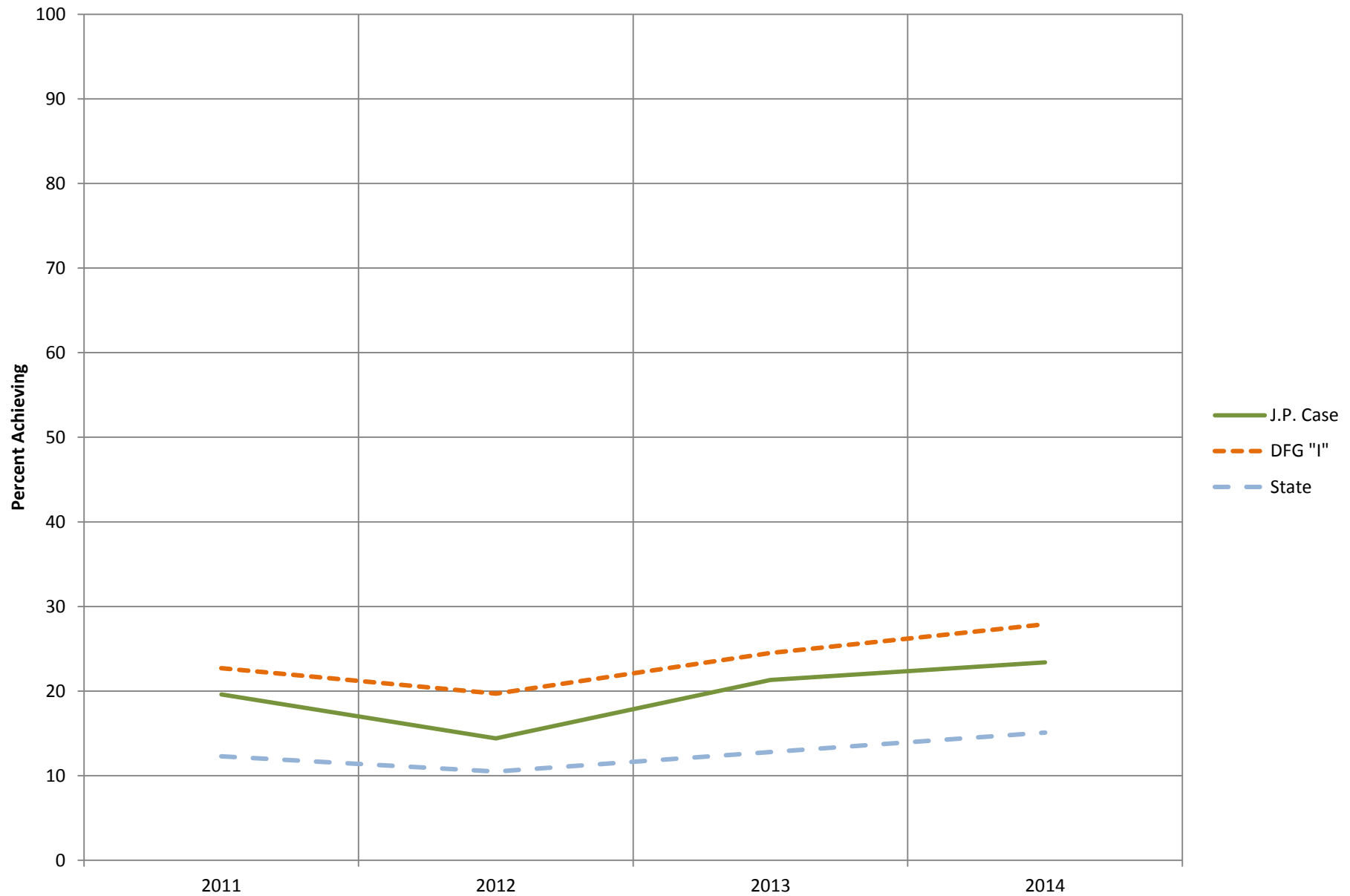
## Grade 7: LAL Proficient and Above



# Grade 7: Advanced Proficient

<b>Language Arts</b>	<b>State</b>	<b>DFG “I”</b>	<b>FRSD</b>
Total Population	15.1%	27.9%	23.4%
General Educ.	18.0%	32.2%	27.5%
Special Educ.	1.9%	3.9%	3.1%

## Grade 7 LAL: Advanced Proficient

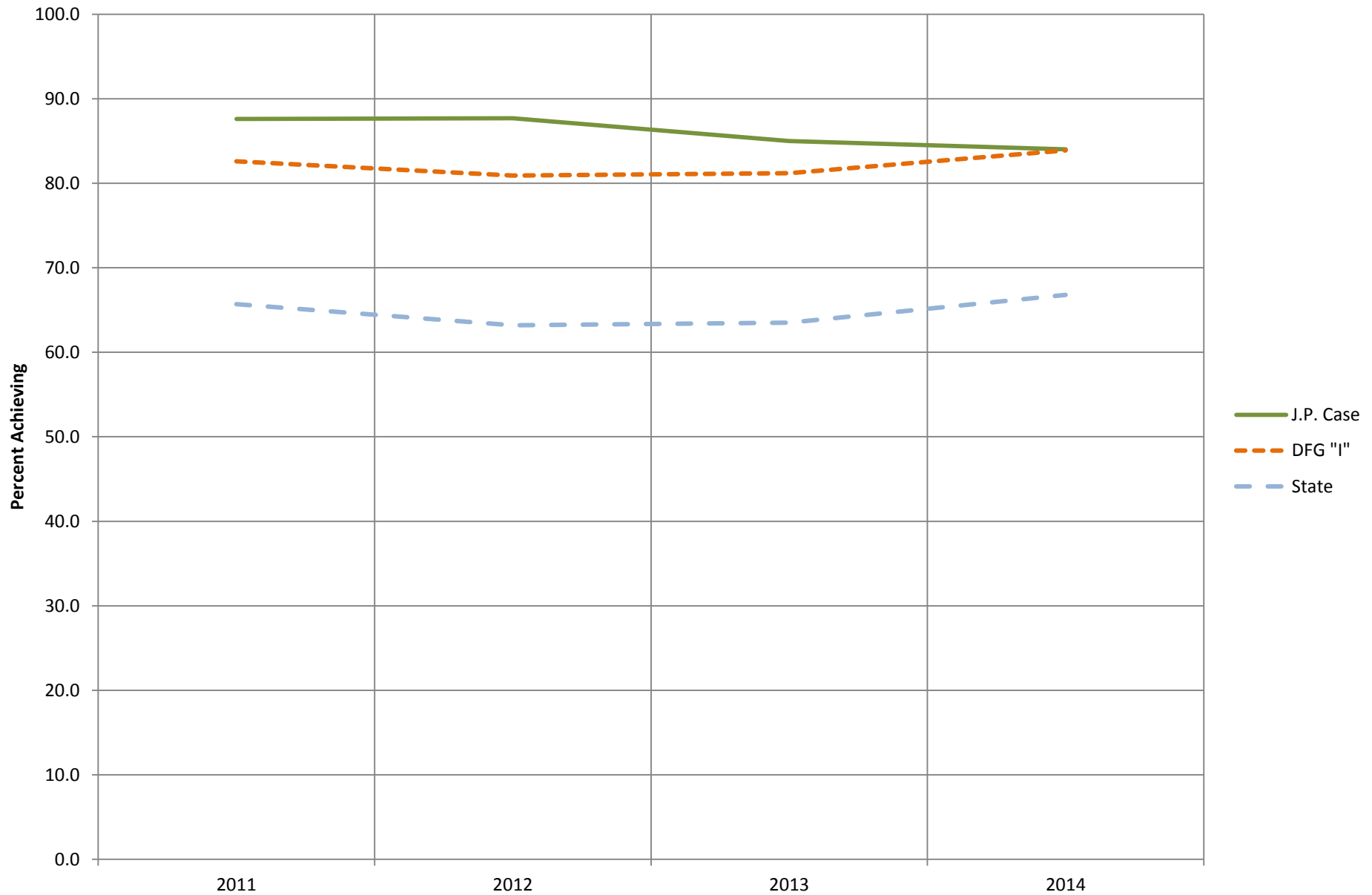


# Grade 7: Proficient and Above

<b>Mathematics</b>	<b>State</b>	<b>DFG "I"</b>	<b>FRSD</b>
Total Population	66.8%	83.9%	84.0%
General Educ.	75.2%	90.4%	90.7%
Special Educ.	29.4%	43.0%	57.5%



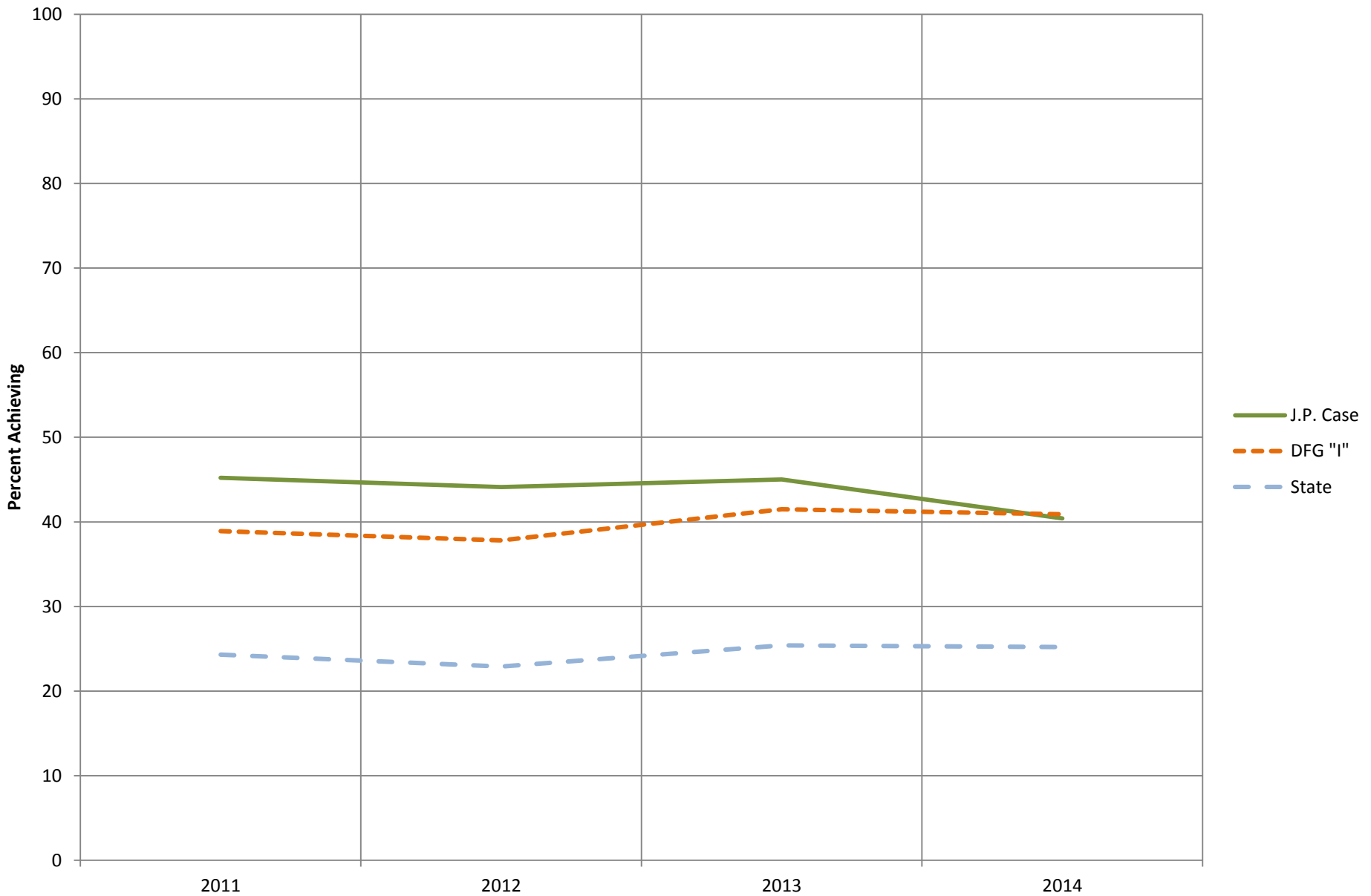
## Grade 7 Math: Proficient and Above



# Grade 7: Advanced Proficient

<b>Mathematics</b>	<b>State</b>	<b>DFG "I"</b>	<b>FRSD</b>
Total Population	25.2%	40.9%	40.4%
General Educ.	29.6%	46.2%	46.2%
Special Educ.	5.4%	10.8%	13.6%

## Grade 7 Math: Advanced Proficient



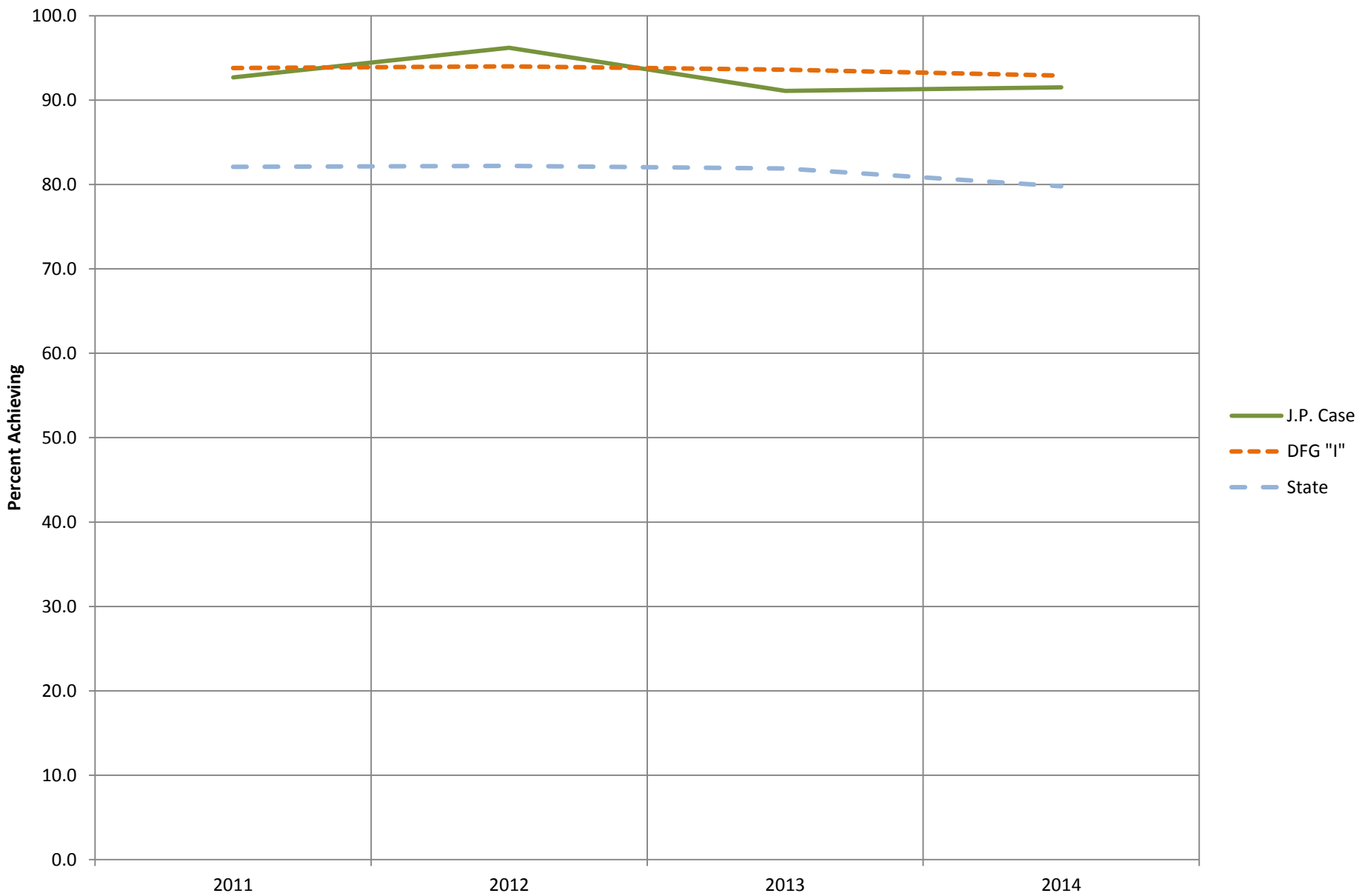
# **Eighth Grade Results**

New Jersey Assessment of Skills and  
Knowledge

# Grade 8: Proficient and Above

Language Arts	State	DFG "I"	FRSD
Total Population	79.8%	92.9%	91.5%
General Educ.	88.3%	97.9%	96.4%
Special Educ.	43.0%	65.6%	67.2%

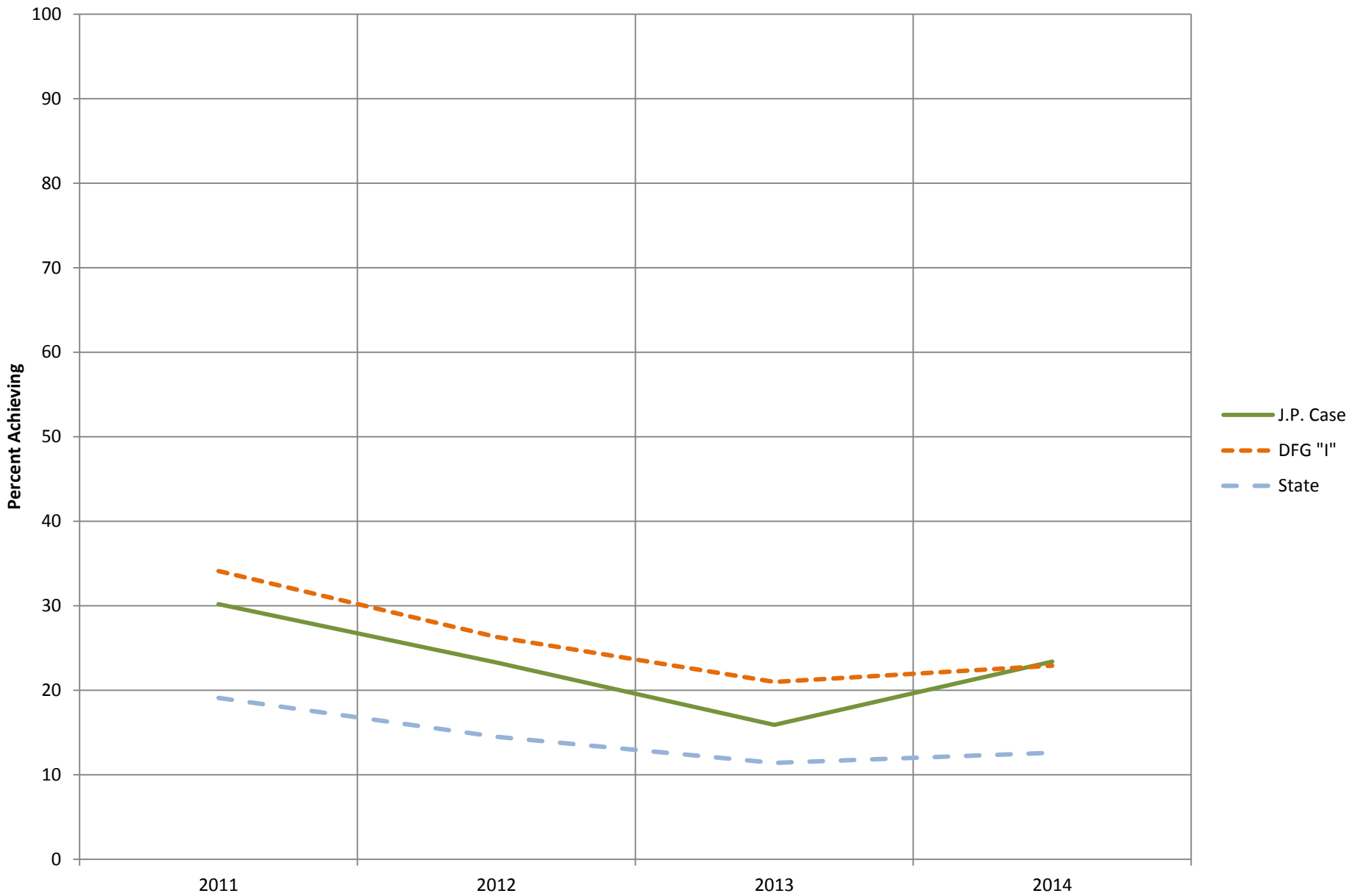
# Grade 8: LAL Proficient and Above



# Grade 8: Advanced Proficient

<b>Language Arts</b>	<b>State</b>	<b>DFG “I”</b>	<b>FRSD</b>
Total Population	12.6%	22.9%	23.4%
General Educ.	15.1%	26.6%	27.5%
Special Educ.	1.1%	2.4%	1.6%

## Grade 8 LAL: Advanced Proficient

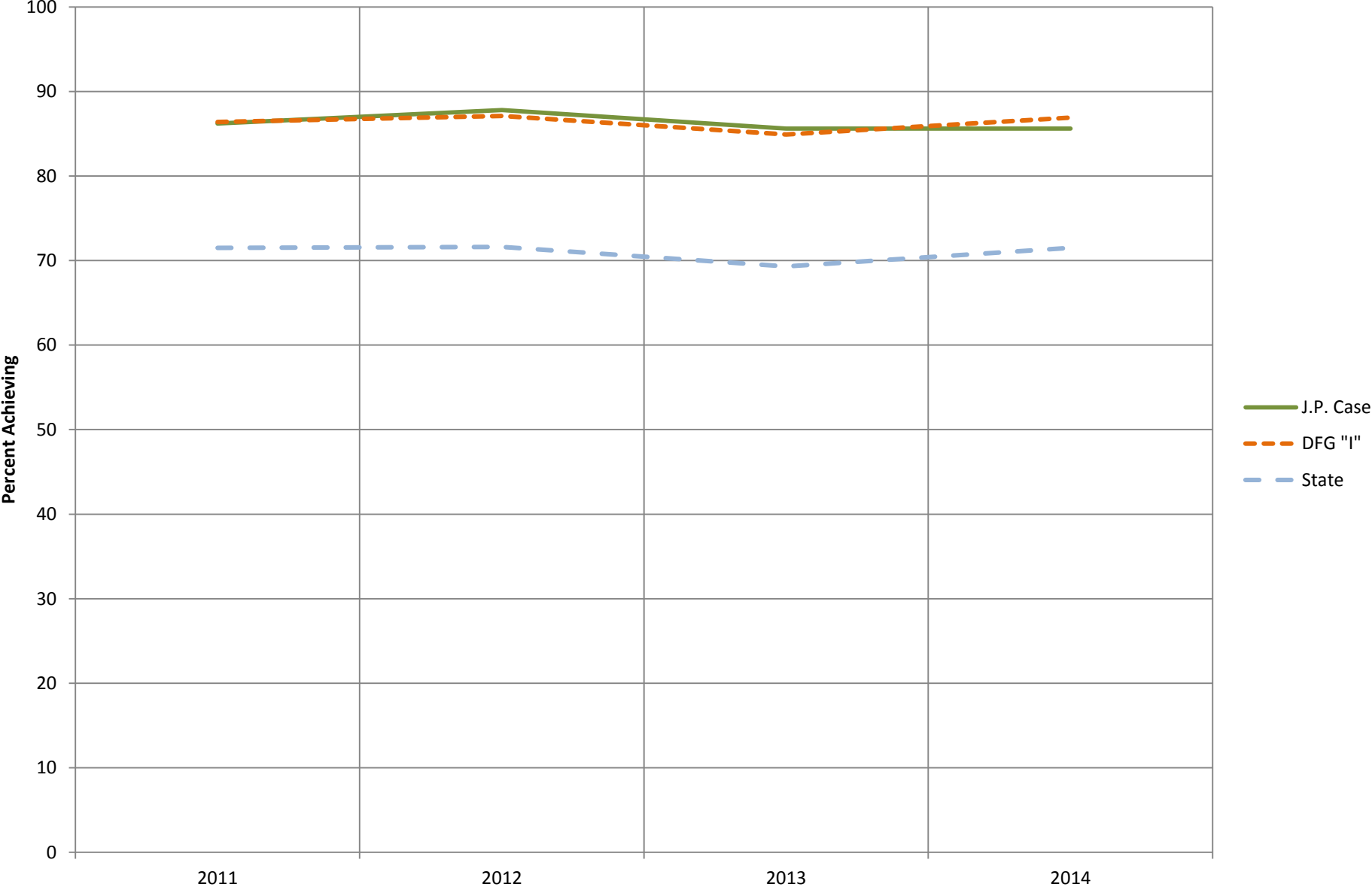




# Grade 8: Proficient and Above

<b>Mathematics</b>	<b>State</b>	<b>DFG "I"</b>	<b>FRSD</b>
Total Population	71.5%	86.9%	85.6%
General Educ.	80.1%	93.2%	91.4%
Special Educ.	32.6%	51.4%	57.1%

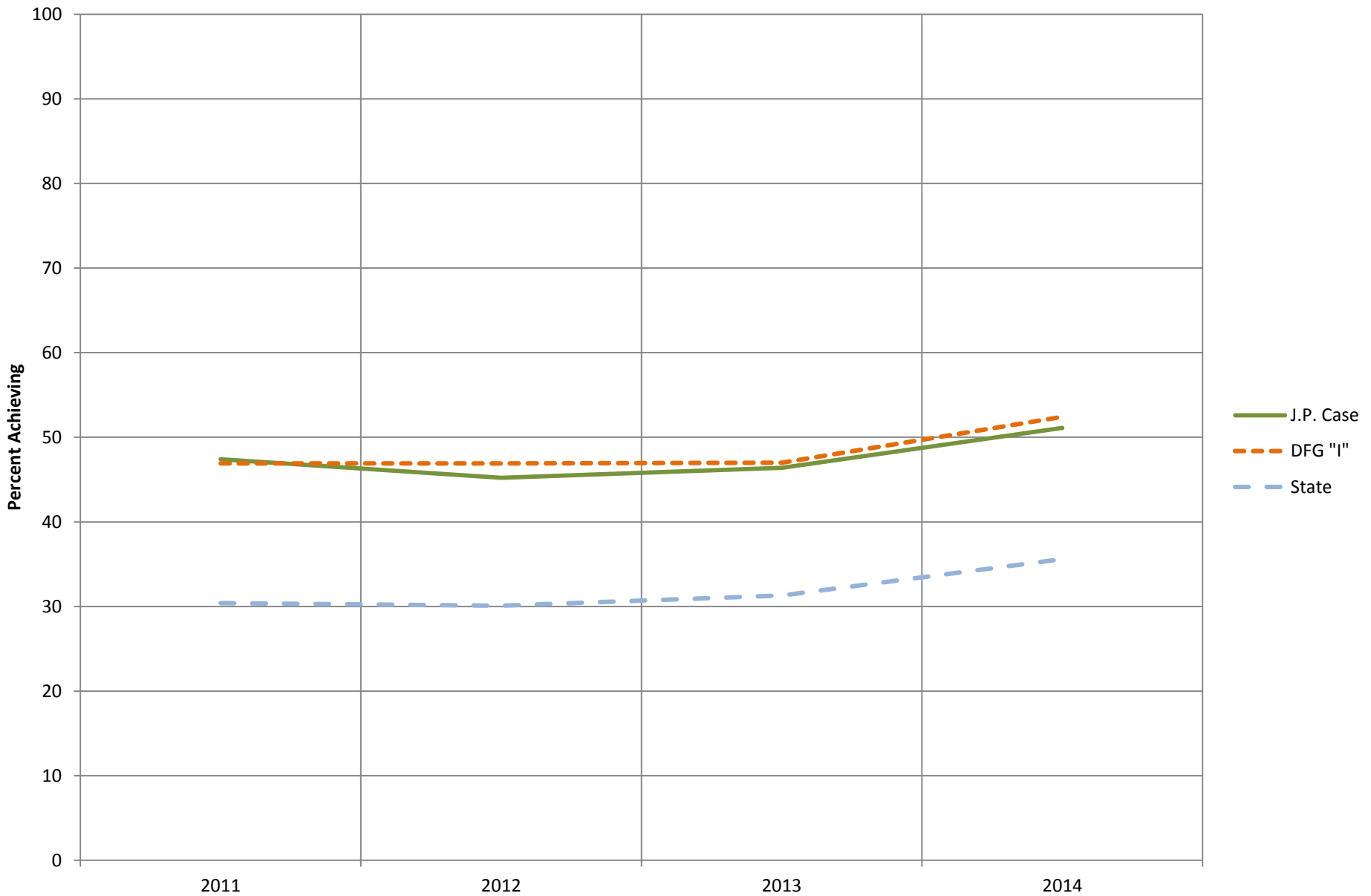
# Grade 8 Math: Proficient and Above



# Grade 8: Advanced Proficient

<b>Mathematics</b>	<b>State</b>	<b>DFG “I”</b>	<b>FRSD</b>
Total Population	35.6%	52.4%	51.1%
General Educ.	41.7%	58.9%	57.1%
Special Educ.	8.1%	15.2%	20.6%

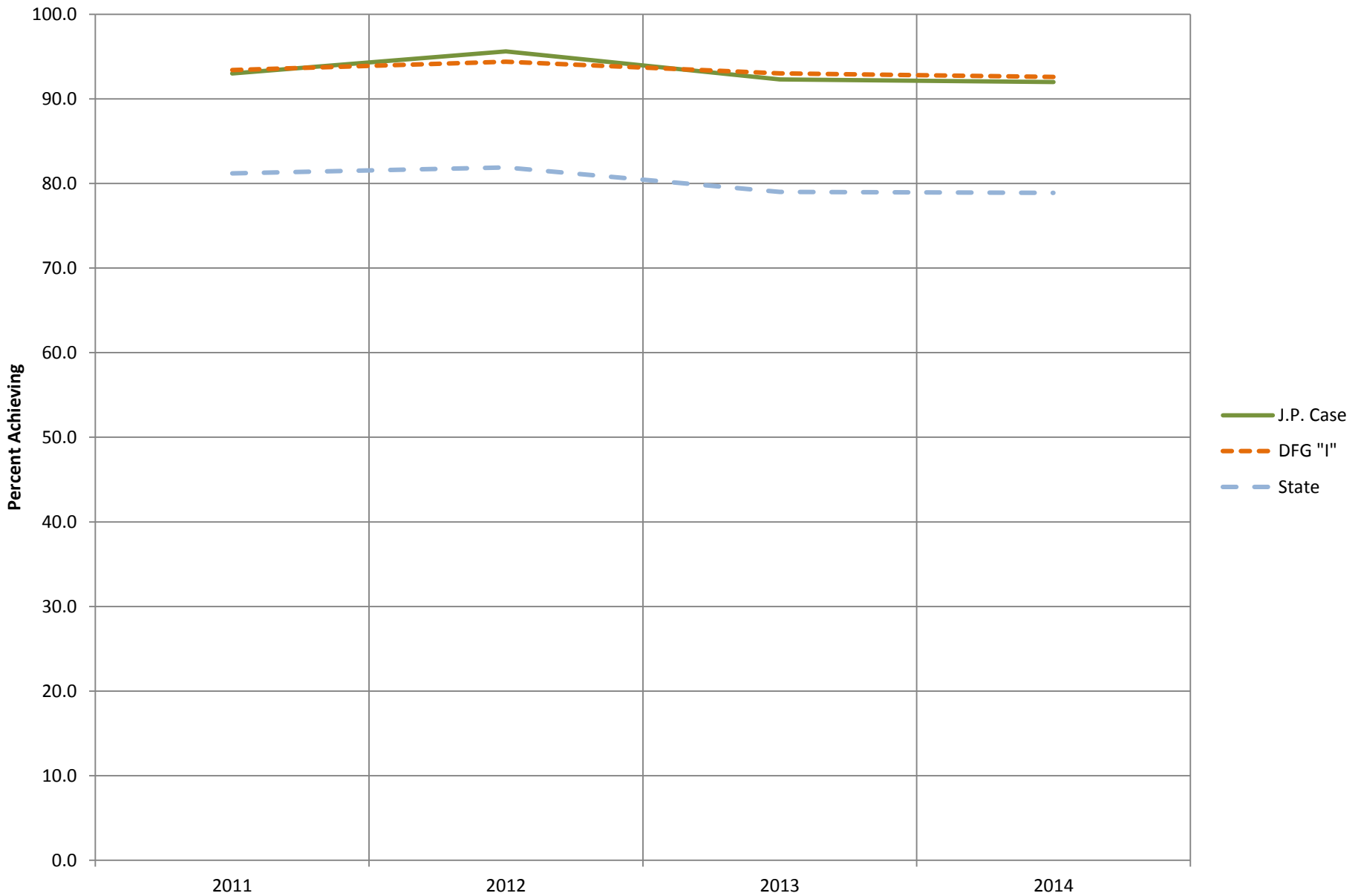
## Grade 8 Math: Advanced Proficient



# Grade 8: Proficient and Above

<b>Science</b>	<b>State</b>	<b>DFG "I"</b>	<b>FRSD</b>
Total Population	78.9%	92.6%	92.0%
General Educ.	86.5%	96.8%	96.1%
Special Educ.	47.3%	69.7%	73.0%

## Grade 8 Science: Proficient and Above



# Grade 8: Advanced Proficient

<b>Science</b>	<b>State</b>	<b>DFG "I"</b>	<b>FRSD</b>
Total Population	27.1%	45.3%	47.6%
General Educ.	31.8%	50.8%	54.1%
Special Educ.	6.9%	14.8%	14.3%

## Grade 8 Science: Advanced Proficient

