



---

# Bradford

Exempted Village  
School District

Board of Education  
Meeting

*April 10, 2024*

---



# STUDENTS OF THE MONTH

...

# Jake Oda - Nominated by Mrs. Erwin



Jake is 8 years old and lives at home with his mom, dad, two younger sisters, and tons of cats. Jake enjoys watching Unspeakable, jumping on his trampoline, and eating cheese pizza. At school, Jake loves gym and reading. He says his favorite book series is Dog Man! One of his favorite hobbies includes hiding my favorite blue marker on a daily basis so he can laugh from his seat when I have nothing to write with!

At school Jake is an extremely hard worker. He is always committed to trying and doing his absolute best. Jake's kind, caring, and friendly character make him a role model for all classmates. Jake tackles new challenges seriously and with a positive attitude. Above all, Jake can always be counted on to lend a helping hand to both staff and students.

When Jake grows up he wants to be a Youtuber to make a ton of money. He's not quite sure what he wants to talk about on his Youtube channel, but he plans to do big things! If he could change anything in the world it would be to turn "meanness into goodness."

I am eager to see what great things Jake will accomplish in this final quarter of second grade! Keep being you, Jake!

# Brileigh Diehl - Nominated by Mrs. Unthank



I chose to nominate Brileigh Diehl for this month's Student Spotlight. I have had the pleasure of having Brileigh in my classroom for two years. Brileigh is one of the hardest workers with the best work ethic. No matter how challenging the task is that I give her, Brileigh perseveres through each task. She is not afraid to ask for help when needed or lend a hand to fellow classmates that need extra help. I know Brileigh is one of the students that will complete all of her work and I never have to worry about the quality. Each assignment is given the same which is her very best. Other classmates are drawn to Brileigh because she is kind and treats others with respect. She will work with any classmate and make each of them feel important. I am proud to have had the pleasure of working with Brileigh. I cannot wait to see what her future holds. This award is well deserved. Great Job Brileigh & Congratulations!



# Joanna Riffell - Nominated by Mr. Snyder



I would like to nominate Joanna Riffell for our Student Spotlight for the month of April. Joanna is a great student who is always smiling and positive. She leads by example and is one of the best overall students in the 9th grade. I can always count on Joanna to give her best effort in class and have a great mindset while doing so. I am happy to have her as my Student Spotlight of the month. Great Job Joanna & Congratulations!

# Kaylynne Minnich - Nominated by Mrs. Timmerman



I would like to nominate Kaylynne Minnich for our Student Spotlight for the month of April. Kaylynne has been a joy in class this year. She participates in class discussions, helps her peers when needed, and is a hard worker. She is improving each day academically and thrives to do her best. Kaylynne is respectful and trustworthy, and she is a role model for other students. Kaylynne has all the great qualities for an exceptional student. Great Job Kaylynne & Congratulations!

# Mrs. Gade- Nominated by Mr. Barr



The staff member I would like to recognize as our Staff Spotlight is Tabitha Breeze. I would like to recognize Tab for all that she has given to the district for over 20 years. She is an amazing teacher which she continues to do with Tier 3 intervention for our kiddos who are in need of intensive interventions to teach strategies in reading. She also has become a leader as our Literacy Coach. She has a wealth of knowledge when it comes to training teachers in how to help students who want to read but struggle because it isn't easy for them. Dyslexia and Science of Reading training are now requirements for teachers across all contents. Her knowledge and the ability to lead our staff is amazing to make us be at the forefront in teaching reading to our students. We are so lucky to have Tab in our district, and I see her helping teachers grow to help our students. Great Job Tab & Congratulations!

# *Bradford Schools Happenings...*





# Play That Goes Wrong

The Bradford Drama Club Presents

## THE PLAY THAT GOES WRONG

HIGH SCHOOL  
EDITION



by **HENRY LEWIS, JONATHAN SAYER, & HENRY SHIELD**

**April 20th & May 4th, at 7:00 p.m.**

**April 21st & May 5th, at 2:00 p.m.**

at **Bradford High School**

Directed by **Cory Canan & Rachel Meiring**

**Tickets will be \$7 at the door**

### Play That Goes Wrong

April 20th and May 4th at 7 p.m.  
April 21st and May 5th at 2 p.m.

#### Cast List:

- Christina Bean - Maddy Guillozet
- Robert - Eric Keener
- Dennis - Braeden Duff
- Max - Owen Beachler
- Taylor - Briley Purpus
- Jonathan - Peyton Melgaard
- Sandra - Lexi Clark
- Annie - Izzy Boyer
- Stagehands
  - Alaenna Newton
  - Grayson Wills
  - Ollie Stollings

#### Backstage Crew:

- Elizabeth Skinner - Stage Manager
- Mykynna Kennedy - Prop Master
- Levi Thobe - Sound
- Daphne Lavey - Lights
- Emma Lavey
- Ky Roberts
- John Troxel
- Joanna Riffell
- Destiny Clark
- Autumn Mills
- Kai Jones
- Leah Clark

# State Testing Information

# April

# 2024

Sunday	Monday	Tuesday	Wednesday	Thursday	Friday	Saturday
	1	2	3	4	5	6
7	8	9	10	11 7 <sup>th</sup> ELA Part 1 8 <sup>th</sup> ELA Part 1 6 <sup>th</sup> ELA Intervention 8 <sup>th</sup> ELA Intervention 9,11,12 – Study Hall	12 7 <sup>th</sup> ELA Part 2 8 <sup>th</sup> ELA Part 2 6 <sup>th</sup> ELA Intervention 8 <sup>th</sup> ELA Intervention 9,11,12 – Study Hall	13
14	15 6 <sup>th</sup> ELA Part 1 10 <sup>th</sup> ELA Part 1 7–9 Math Intervention 11-12 Study Hall	16 6 <sup>th</sup> ELA Part 2 10 <sup>th</sup> ELA Part 2 7–9 Math Intervention 11-12 Study Hall	17 8 <sup>th</sup> Math Part 1 Algebra Part 1 6 <sup>th</sup> Math Intervention 9 <sup>th</sup> History Intervention 10 <sup>th</sup> Government Intervention 11-12 – Study Hall	18 8 <sup>th</sup> Math Part 2 Algebra Part 2 6 <sup>th</sup> Math Intervention 9 <sup>th</sup> History Intervention 10 <sup>th</sup> Government Intervention 11-12 – Study Hall	19 6 <sup>th</sup> Math Part 1 Geometry Part 1 10 <sup>th</sup> Biology Intervention 7-8 & 11-12 Study Hall	20
21	22 6 <sup>th</sup> Math Part 1 Geometry Part 1 10 <sup>th</sup> Biology Intervention 7-8 & 11-12 Study Hall	23 9 <sup>th</sup> US History 10 <sup>th</sup> Government 8 <sup>th</sup> Science Intervention 6, 7, 9, 11, 12 Study Hall	24	25 8 <sup>th</sup> Science 10 <sup>th</sup> Biology 6, 7, 9, 11, 12 Study Hall	26	27

## Elementary Testing Time



April 9- 5th grade ELA

April 10- 5th grade ELA

April 11- 4th grade ELA

April 12- 4th grade ELA

April 16- 3rd grade ELA

April 17- 3rd grade ELA

April 18- 5th grade Science

April 19- 5th grade Science

April 23- 5th Grade Math

April 24- 5th Grade Math

April 25- 4th Grade Math

April 26- 4th Grade Math

April 30- 3rd Grade Math

May 1- 3rd Grade Math

# Father Daughter Dance “ Once Upon a Time”





# Kindergarten Screening Signing Day

42 students were screened on April 5, 2024





# Eclipse Club



LIVE

ECLIPSE 2024

**ALL EYES TO THE SKIES**  
BRADFORD HIGH SCHOOL

LIVE

**ALL EYES TO THE SKIES**  
BRADFORD HIGH SCHOOL



LIVE

ECLIPSE 2024

**ALL EYES TO THE SKIES**  
BRADFORD HIGH SCHOOL



ECLIPSE 2024

**ALL EYES TO THE SKIES**  
BRADFORD HIGH SCHOOL



ECLIPSE 2024

**ALL EYES TO THE SKIES**  
BRADFORD HIGH SCHOOL







# All Eyes on the Sky





---

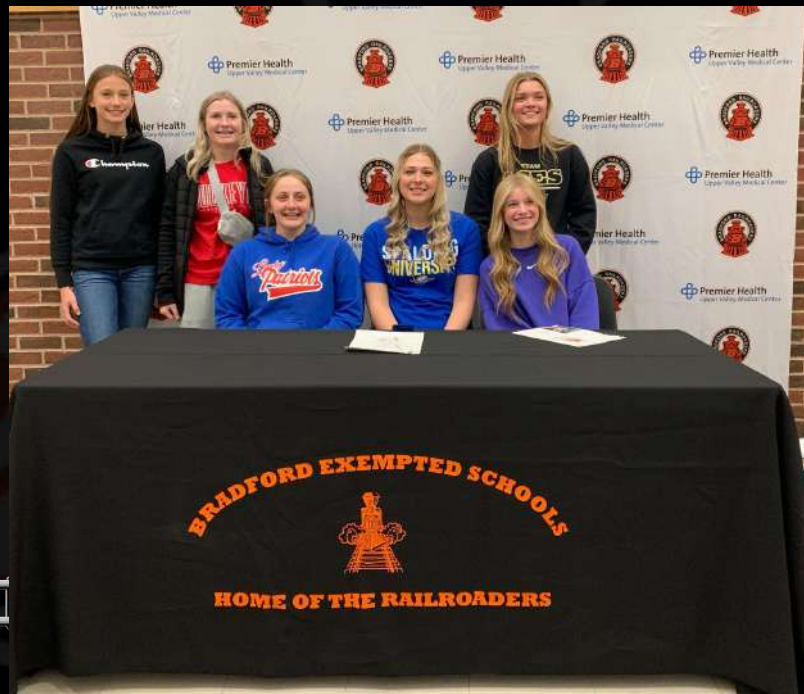
# Upcoming Events

- 04/09 - 05/01 - Elementary Ohio State Testing Days
  - 04/11 - 04/25 - JH/HS Ohio State Testing Days
  - 04/24 - Early Release for Professional Development
  - 04/26 - Interims go home
  - 04/28 - Prom 7:00-10:00
  - 05/01 - PTO - 6:00 - Media Center
-

# Athletic Upcoming Events

- 4/11 Baseball/Softball v FM, JH Track @ Newton
- 4/12 Softball @ Milton Union, HS HOME Track Tri and SENIOR NIGHT
- 4/13 HS Track @ Minster, Baseball DH v Milton, Softball @ Greenville
- 4/15 JV Baseball v Anna, Softball v Celina, JH Track @ Covington
- 4/16 Baseball/Softball v Preble Shawnee, HS Track @ Troy
- 4/18 Baseball/Softball @ Arcanum, JH Track @ Dixie
- 4/19 Softball @ Brookville, Baseball v Botkins
- 4/20 Baseball DH v Northridge, Softball v Ben Logan, JH Track @ FM
- 4/22 Baseball @ Troy Christian, Softball v New Bremen
- 4/23 Softball @ Mississinawa, JH Track @ HOME
- 4/24 JH @ Troy
- 4/25 Baseball/Softball v Tri Village
- 4/27 Baseball v Jackson Center, JH Track @ Tri Village
- 4/29 Softball @ St. Henry
- 4/30 Baseball/Softball @ Dixie, HS Track @ FM, JH Track @ Covington

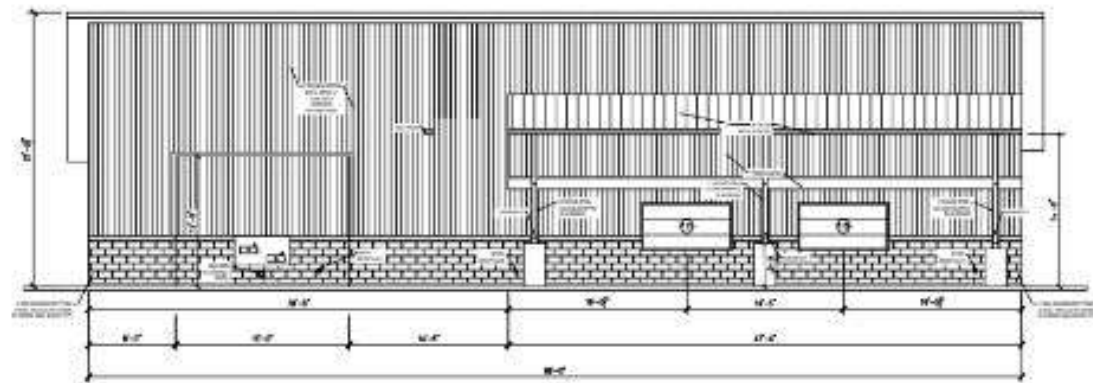
# SIGNING DAY



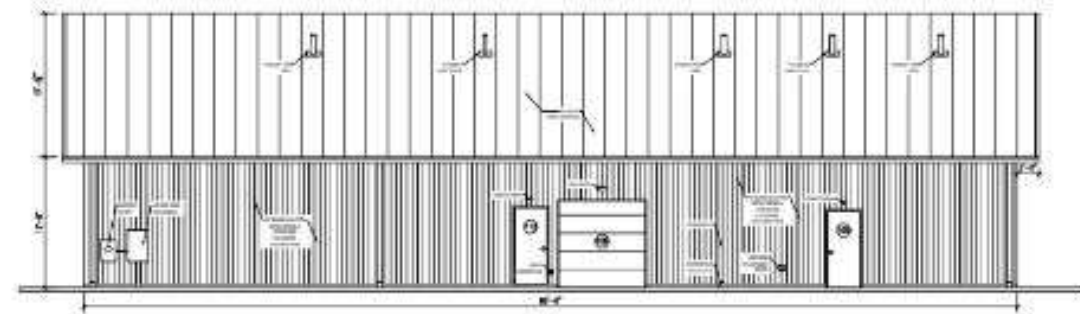




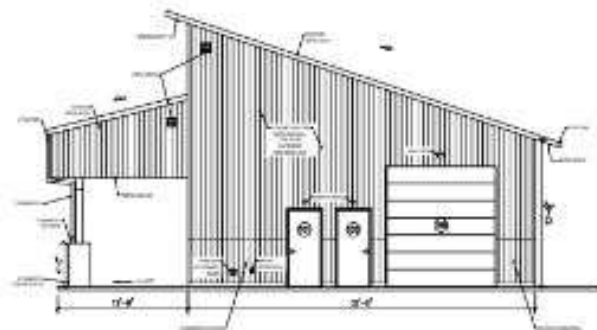




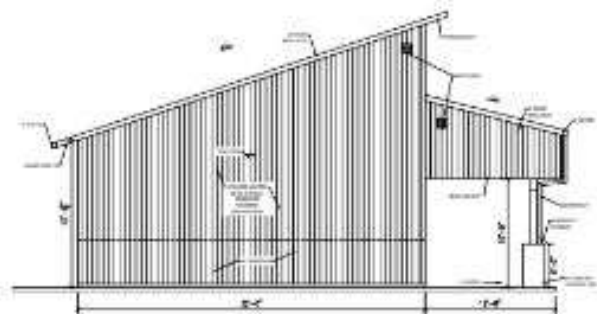
NORTH ELEVATION  
SCALE: 3/16" = 1'-0"



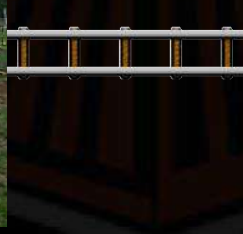
SOUTH ELEVATION  
SCALE: 3/16" = 1'-0"



WEST ELEVATION  
SCALE: 3/16" = 1'-0"



EAST ELEVATION  
SCALE: 3/16" = 1'-0"









**THANK YOU!**