

ACTIVITIES FOR EXCELLENCE:

◆ Quiz 7:

Assess students' understanding of ties and slurs, accidentals and key signatures, and counting eighth notes in $\frac{2}{4}$ and $\frac{3}{4}$ meters. Also assess students' knowledge about the homelands of composers represented in this book. Duplicate and distribute the world map worksheet found on score page 527.

STANDARD OF EXCELLENCE QUIZ 7

Name _____ Score _____

- ◆ Label the curved line in each measure as a tie or a slur. Do only the measures in your clef.



1. 2. 3.

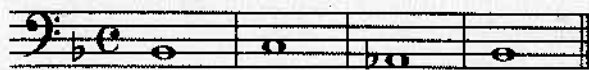


1. 2. 3.

- ◆ Name the notes in each measure. Do only the measures in your clef.



4. 5. 6. 7.



4. 5. 6. 7.

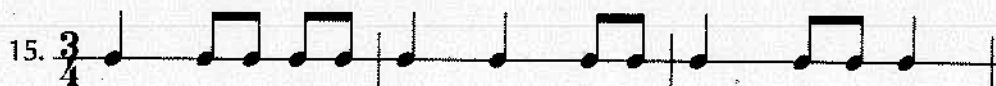
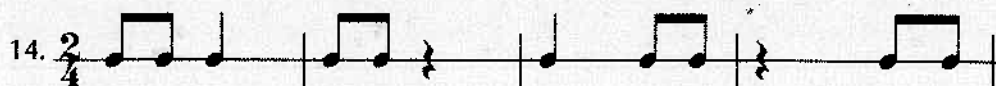


8. 9. 10. 11. 12. 13.



8. 9. 10. 11. 12. 13.

- ◆ Write in the counting for each line. Be sure to check the time signature for each line.

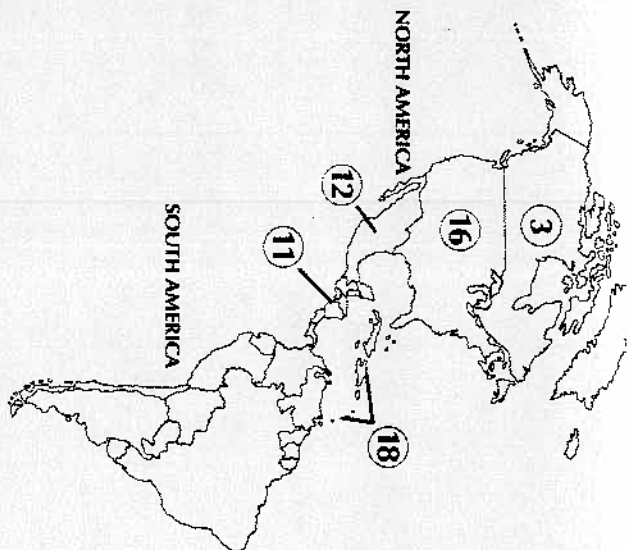


- ◆ Label each country on the world map with the number of the corresponding statement.

16. Homeland of George R. Poulton

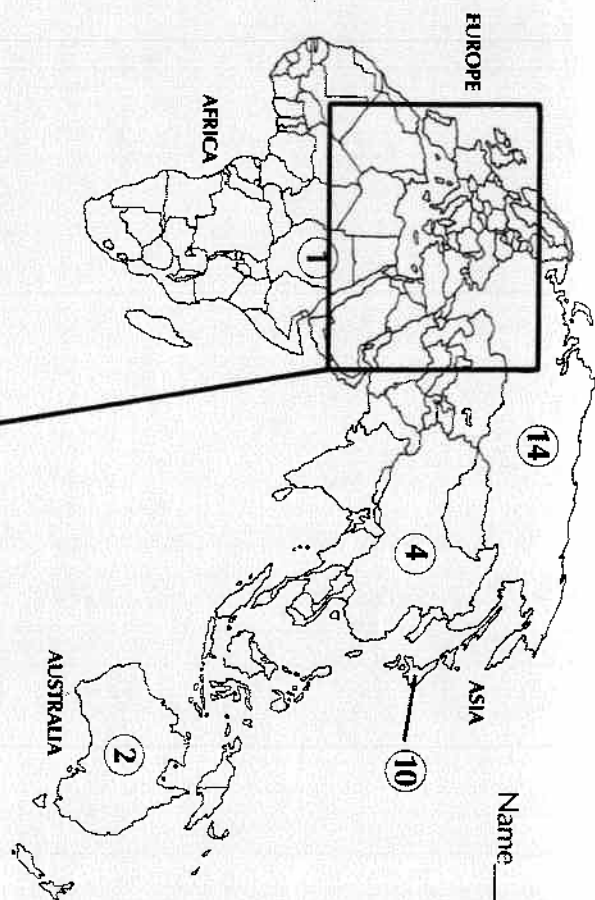
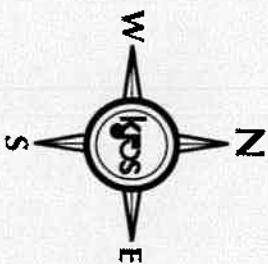
17. Homeland of Jacques Offenbach

18. Homeland of Edvard Grieg



KEY

- 1 - Africa
- 2 - Australia
- 3 - Canada
- 4 - China
- 5 - Czech Republic
- 6 - England
- 7 - France
- 8 - Germany
- 9 - Italy
- 10 - Japan
- 11 - Latin America
- 12 - Mexico
- 13 - Norway
- 14 - Russia
- 15 - Scotland
- 16 - United States
- 17 - Wales
- 18 - West Indies



Name _____

